



# Aviation Investigation Preliminary Report

---

<b>Location:</b>	Atlanta, GA	<b>Accident Number:</b>	DCA23FA428
<b>Date &amp; Time:</b>	August 29, 2023, 18:31 Local	<b>Registration:</b>	N579DZ
<b>Aircraft:</b>	AIRBUS SAS A350-941	<b>Injuries:</b>	4 Serious, 13 Minor, 148 None
<b>Flight Conducted Under:</b>	Part 121: Air carrier - Scheduled		

---

On August 29, 2023, about 1831 Eastern daylight time, Delta Air Lines (DAL) flight 175, an Airbus A350-941 experienced turbulence during descent into Hartsfield Jackson International Airport (ATL), Atlanta, Georgia. Of the 14 crew and 151 passengers onboard, 2 crew and 2 passengers sustained serious injuries, and 8 crew and 5 passengers sustained minor injuries. The aircraft sustained minor damage. DAL175 was a 14 *Code of Federal Regulations* (CFR) Part 121 scheduled international passenger flight from Milan Malpensa Airport (MXP), Milan, Italy to ATL.

The aircraft was flying the OZZZI 1 arrival into ATL with the seatbelt sign illuminated in the cabin. About 10 miles prior to reaching the OZZZI intersection, the flight crew stated they identified a weather radar return about 40 miles ahead near the KILRR intersection and requested a deviation from air traffic control (ATC) about 1827. The air traffic controller requested the aircraft continue to OZZZI before deviating north and the flight crew accepted this instruction noting only a small white cloud near OZZZI. The flight crew stated there were no PIREPs from preceding aircraft, no nearby weather radar returns, nor any significant turbulence indications on their Flight Weather Viewer application. The relief pilot contacted the flight attendants to inform them that they may encounter turbulence in about 5 minutes and suggested they complete their duties within that time.

Within about 4 minutes, about 1831, the aircraft entered about 12 seconds of instrument meteorological conditions (IMC) at about 14,000 feet and encountered about 2 seconds of severe turbulence within the cloud. The flight crew were notified of injuries in the cabin, declared an emergency with ATC, and requested emergency medical service (EMS) upon arrival in Atlanta. EMS personnel met the aircraft at the gate, and about 11 people were transported to the hospital for further evaluation.

A preliminary weather evaluation was conducted by the NTSB post-flight. Figure 1 shows the accident flight path and the composite radar image including the area of building convection that the accident flight penetrated during the event.

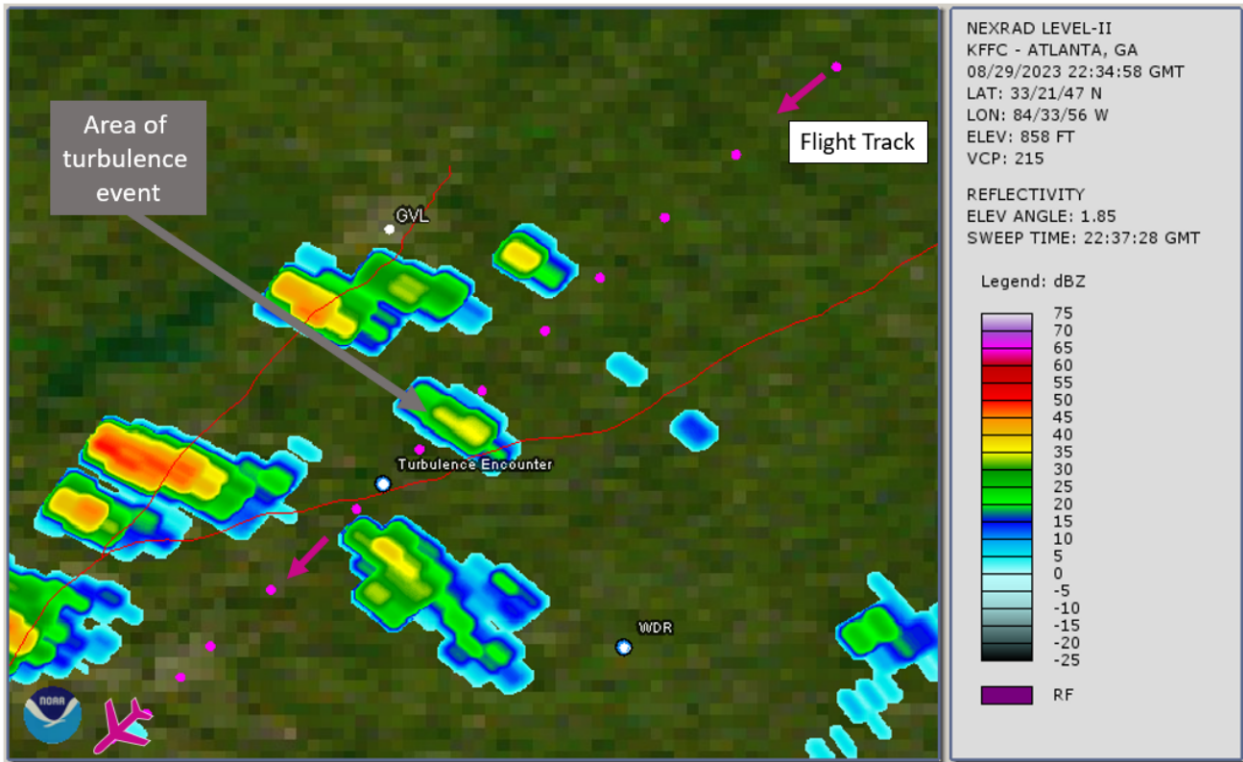


Figure 1. National Weather Service KFFC WSR-88D Composite Reflectivity image for 2234Z with accident flight track overlaid in magenta. Aircraft position at the time the image was created is indicated by the aircraft symbol.

NTSB specialties investigating this accident: air traffic control, meteorology, cockpit voice recorder, and flight data recorder. Interviews were conducted with air traffic control personnel. Parties to the investigation include the Federal Aviation Administration (FAA), Delta Air Lines and the National Air Traffic Controllers Association (NATCA). In accordance with the provisions of Annex 13 to the Convention on International Civil Aviation, an Accredited Representative from the Bureau d'Enquêtes et d'Analyses (BEA) of France, the State of Design and Manufacture of the aircraft, was appointed to support the investigation, with Airbus as a technical advisor.

## Aircraft and Owner/Operator Information

<b>Aircraft Make:</b>	AIRBUS SAS	<b>Registration:</b>	N579DZ
<b>Model/Series:</b>	A350-941	<b>Aircraft Category:</b>	Airplane
<b>Amateur Built:</b>			
<b>Operator:</b>	Delta Air Lines	<b>Operating Certificate(s) Held:</b>	Flag carrier (121)
<b>Operator Designator Code:</b>			

## Meteorological Information and Flight Plan

<b>Conditions at Accident Site:</b>		<b>Condition of Light:</b>	
<b>Observation Facility, Elevation:</b>		<b>Observation Time:</b>	
<b>Distance from Accident Site:</b>		<b>Temperature/Dew Point:</b>	
<b>Lowest Cloud Condition:</b>		<b>Wind Speed/Gusts, Direction:</b>	/ ,
<b>Lowest Ceiling:</b>		<b>Visibility:</b>	
<b>Altimeter Setting:</b>		<b>Type of Flight Plan Filed:</b>	
<b>Departure Point:</b>	Milan (MXP)	<b>Destination:</b>	Atlanta, GA (ATL)

## Wreckage and Impact Information

<b>Crew Injuries:</b>	2 Serious, 8 Minor, 4 None	<b>Aircraft Damage:</b>	None
<b>Passenger Injuries:</b>	2 Serious, 5 Minor, 144 None	<b>Aircraft Fire:</b>	None
<b>Ground Injuries:</b>	N/A	<b>Aircraft Explosion:</b>	None
<b>Total Injuries:</b>	4 Serious, 13 Minor, 148 None	<b>Latitude, Longitude:</b>	34.095633,-83.834486 (est)

## Administrative Information

<b>Investigator In Charge (IIC):</b>	Silva, Sathya
<b>Additional Participating Persons:</b>	Joshua Migdal; Delta Air Lines Patrick Lusch; FAA Yann Torres; BEA Chris Rosati; National Air Traffic Controllers Association
<b>Investigation Class:</b>	<a href="#">Class 3</a>
<b>Note:</b>	