



Aviation Investigation Preliminary Report

Location:	Onamia, MN	Accident Number:	CEN23FA270
Date & Time:	June 30, 2023, 13:49 Local	Registration:	N239BA
Aircraft:	ICON A5	Injuries:	1 Fatal
Flight Conducted Under:	Part 91: General aviation - Personal		

On June 30, 2023, about 1349 central daylight time, an Icon A5 airplane, N239BA, was destroyed during an accident on Mille Lacs Lake near Onamia, Minnesota. The pilot was fatally injured. The airplane was operated as a Title 14 *Code of Federal Regulations* (CFR) Part 91 personal flight.

According to Automatic Dependent Surveillance – Broadcast (ADS-B) data, the flight originated from the Anoka County/Blaine Airport (ANE), Blaine, Minnesota, about 1300, and proceeded on a north course. The airplane climbed to about 2,500 ft msl. A pilot of a second airplane, N268BA, joined a pre-arranged formation with the accident airplane about 1315 near Cambridge, Minnesota. The flight of two continued in a north west course and at 1325 a climb to about 6,000 msl was initiated. A descent was initiated about 16 miles from the south shore of Mille Lacs Lake. ADS-B data ends at 1347 about 6 miles from the accident site and showed the airplane about 2,200 ft msl at the south shore of Mille Lacs Lake.

According to the pilot of the second airplane, both pilots descended over the lake to about 50 to 75 feet above the surface of the water, the accident airplane was “a bit lower.” Both pilots were communicating to each other through onboard radios. The accident pilot’s son was driving on a road on the west shore of the lake communicating to the accident pilot via cellular telephone. The pilots agreed to fly closer to the west shore of the lake. The pilot of the second airplane initiated a climb and turned toward the west. In his peripheral vision, he noticed a splash and thought the accident pilot had landed. He made several radio calls to the accident pilot with no response.

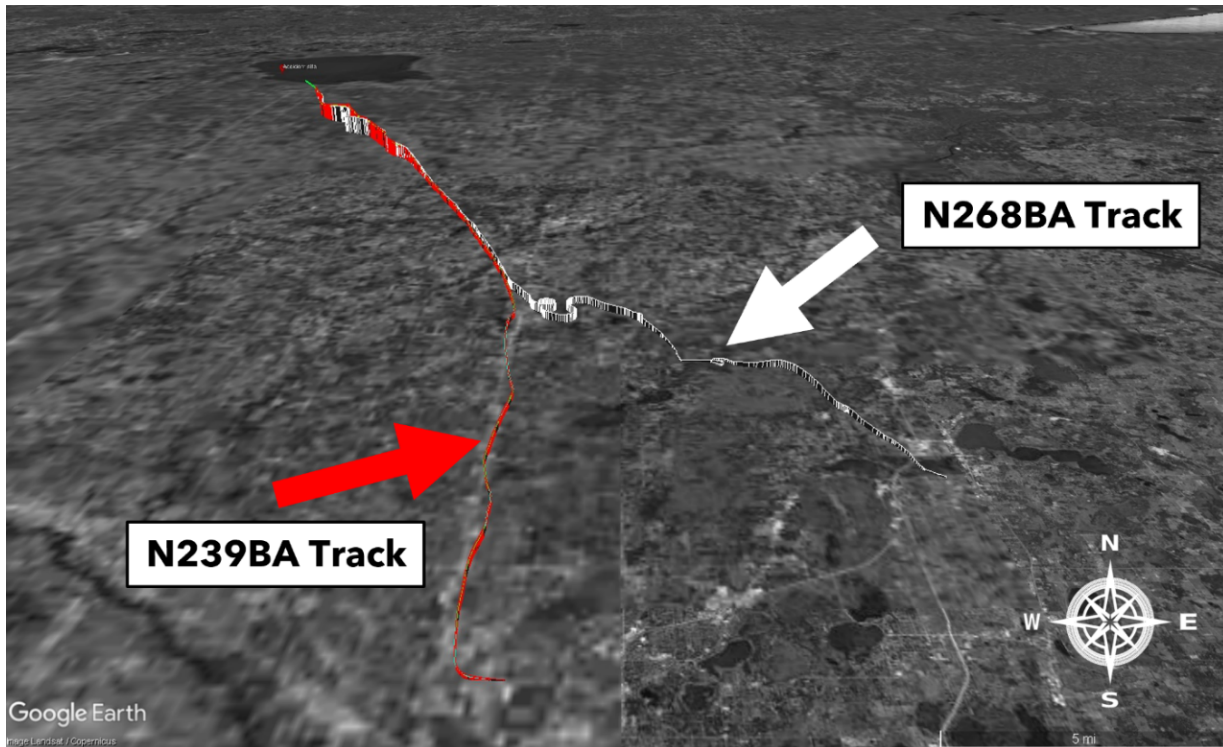


Figure 1: Entire ADS-B flight path of the accident airplane (N239BA) and the second airplane (N268BA).

The accident airplane impacted the water about a mile north of Indian Point in Shah-bush-kung Bay in Mille Lacs Lake. The airplane was highly fragmented and the main wreckage was submerged in about 26 feet of water. A debris field was scattered on the surface of the water. All flight control surfaces, engine and the majority of the airframe were recovered from the debris field.

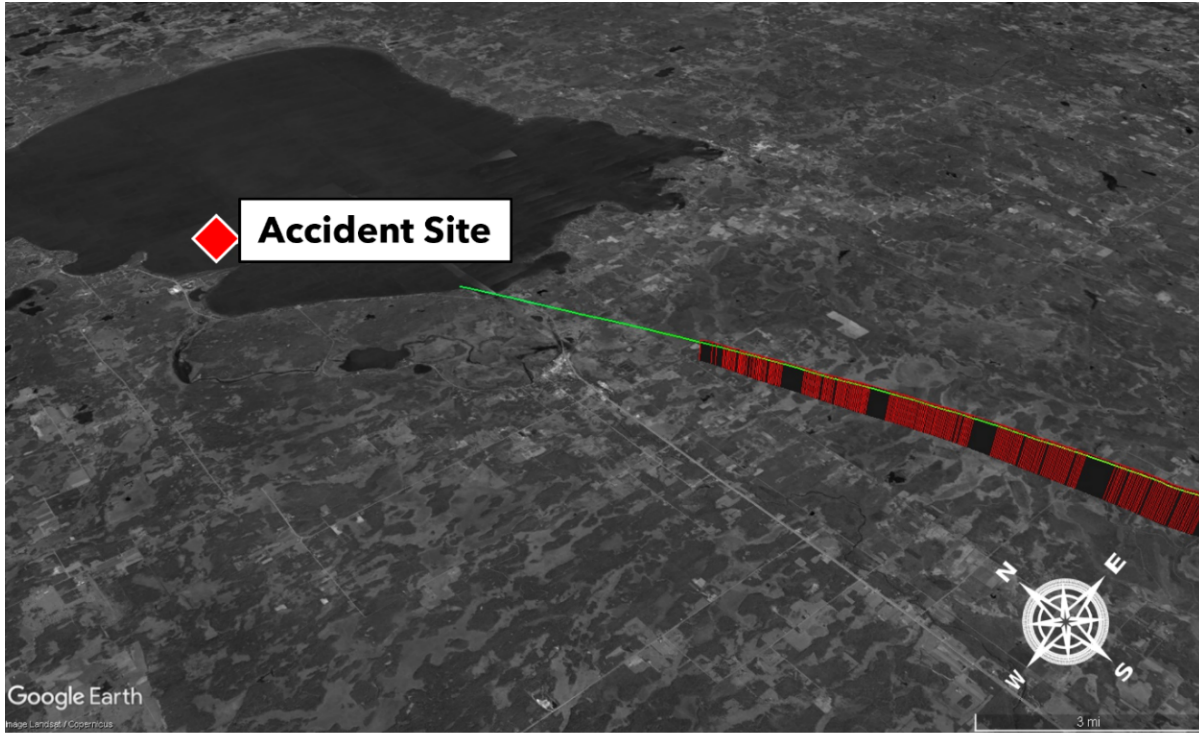


Figure 2: ADS-B flight track of the final portion of the accident flight.

The airplane wreckage was recovered to a secure facility for further examination.

Aircraft and Owner/Operator Information

Aircraft Make:	ICON	Registration:	N239BA
Model/Series:	A5	Aircraft Category:	Airplane
Amateur Built:			
Operator:	On file	Operating Certificate(s) Held:	None
Operator Designator Code:			

Meteorological Information and Flight Plan

Conditions at Accident Site:	VMC	Condition of Light:	Day
Observation Facility, Elevation:	KBRD,1222 ft msl	Observation Time:	13:53 Local
Distance from Accident Site:	21 Nautical Miles	Temperature/Dew Point:	27°C /14°C
Lowest Cloud Condition:	Clear	Wind Speed/Gusts, Direction:	8 knots / , 300°
Lowest Ceiling:	None	Visibility:	10 miles
Altimeter Setting:	29.94 inches Hg	Type of Flight Plan Filed:	
Departure Point:	Blaine, MN (KANE)	Destination:	Big Pine Lake, MN

Wreckage and Impact Information

Crew Injuries:	1 Fatal	Aircraft Damage:	Destroyed
Passenger Injuries:	N/A	Aircraft Fire:	None
Ground Injuries:		Aircraft Explosion:	None
Total Injuries:	1 Fatal	Latitude, Longitude:	46.19,-93.73

Administrative Information

Investigator In Charge (IIC):	Brannen, John
Additional Participating Persons:	Greg Thurston; FAA; Minneapolis, MN
Investigation Class:	Class 3
Note:	