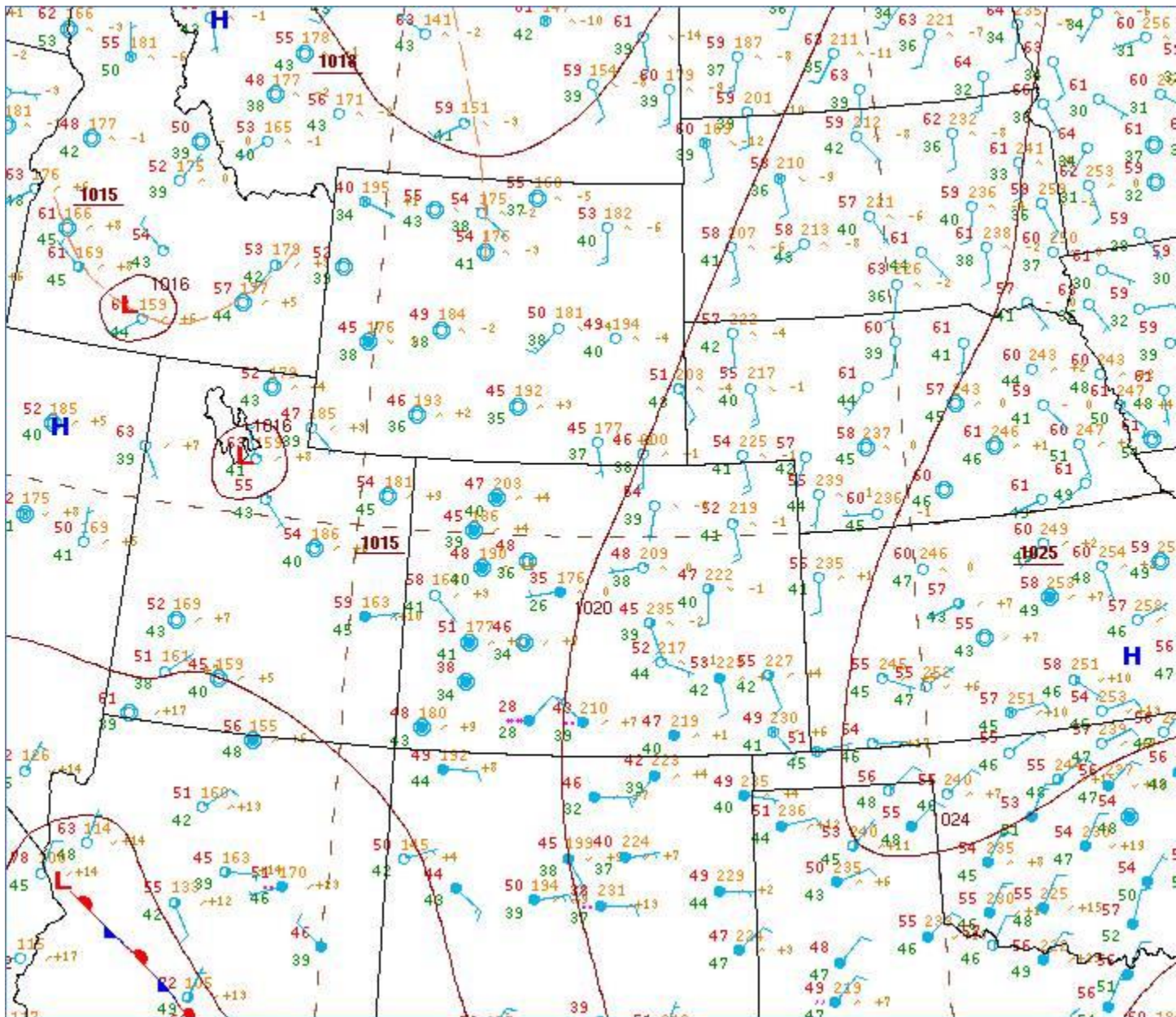


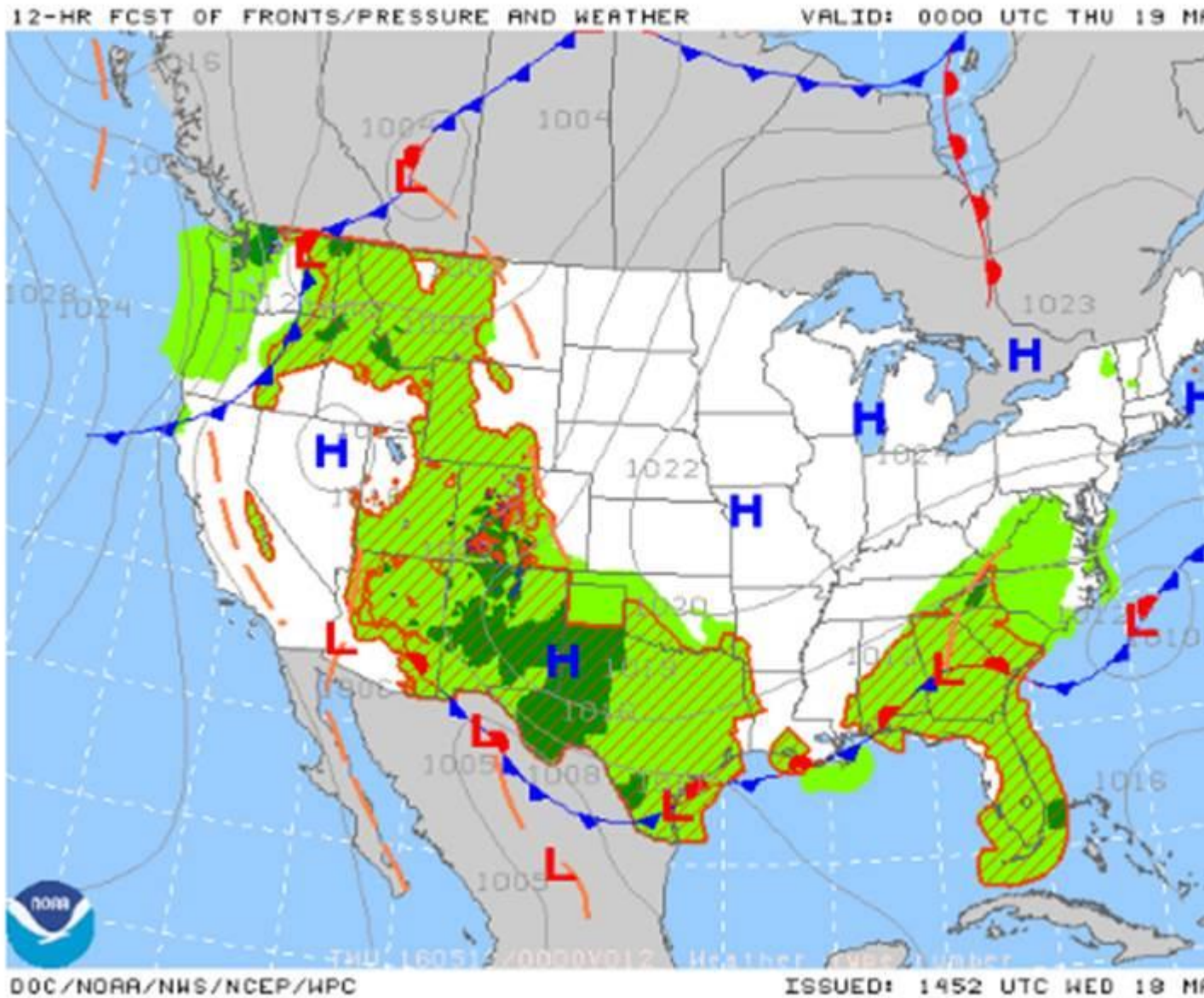
Preliminary Weather Briefing May 18, 2016 Regarding Cessna P210, N6609P

Synoptic Conditions – The NWS Surface Analysis Chart for 0900 MDT (1500Z) for the route of flight is included below. The chart depicted two low pressure systems over southern Idaho and northern Utah at 1015-hectopascals (hPa) with no associated frontal systems depicted. A high pressure system was located over Kansas at 1025-hPa with a ridge extending into the Oklahoma panhandle. The station models depicted calm winds with overcast skies over western Colorado with temperatures in the 40's degrees Fahrenheit (F), with scattered to broken sky cover to the east of the Rockies with light southerly winds with temperatures from 45° to 53° F. No significant weather was depicted on the chart between the departure, refueling airport, the accident site, and the planned destination airport in Oklahoma.



The NWS 12-hour Prognostic Chart valid for 1800 MDT (0000Z) expected a potential for scattered intermittent rain and thunderstorms over Utah, Colorado, New Mexico, western Texas, into Oklahoma for the afternoon.

12 Hours Surface Prognostic



Observations – The METARs over the region at the time of the accident indicated a MVFR broken cloud layer over the area, the reports were as follows:

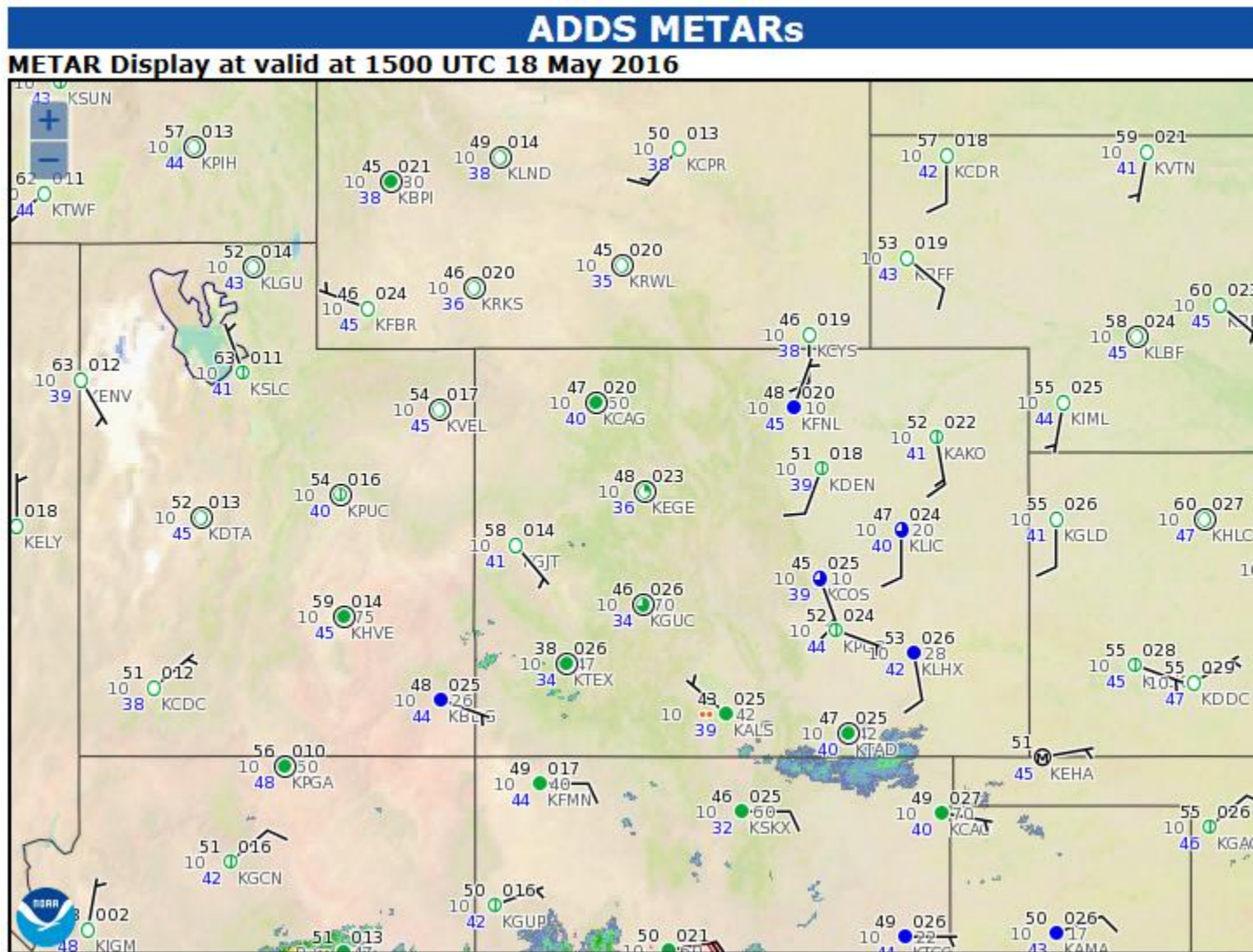
VFR METAR KDEN 181453Z 20010KT 10SM FEW040 FEW200 11/04 A3018 RMK AO2 SLP191 T01060039 58002

VFR METAR KAPA 181453Z 26004KT 10SM FEW070 FEW110 FEW200 09/03 A3018 RMK AO2 SLP209
T00890033 58000

VFR METAR KMNH 181455Z AUTO 19020G25KT 10SM SCT010 05/02 A3024 RMK AO2

IFR METAR KAFF 181458Z AUTO 19008KT 10SM OVC009 05/05 A3024 RMK AO2 SLP232 53001
 MVFR METAR KCWN 181458Z AUTO 15011G18KT 10SM BKN016 05/03 A3018 RMK AO2 BKN V OVC SLP127
 60001 T00500030 58003 \$
 MVFR METAR KCOS 181454Z 16015KT 10SM BKN010 BKN037 07/04 A3025 RMK AO2 SLP235 T00720039 58002
 VFR METAR KFCS 181458Z AUTO 18010KT 10SM FEW014 OVC039 08/05 A3023 RMK AO2 SLP247 T00760047
 57004
 VFR METAR K PUB 181453Z AUTO 11003KT 10SM FEW013 11/07 A3024 RMK AO2 SLP217 T01110067 58001
 MVFR METAR KABH 181456Z AUTO 23010KT FEW009 BKN021 BKN039 A3024 RMK AO2 SLPNO 57003 \$
 MVFR METAR KLIC 181455Z AUTO 18011KT 10SM BKN020 BKN025 BKN037 08/04 A3024 RMK AO2 SLP222
 T00830044 5001
 MVFR METAR KLHX 181453Z AUTO 17008KT 10SM SCT022 BKN028 OVC055 12/06 A3026 RMK AO2 SLP223
 T01170056 50001
 VFR METAR K LAA 181453Z AUTO 16009KT 140V200 10SM BKN065 BKN100 13/06 A3025 RMK AO2 SLP227
 T01280056 51004 TSNO

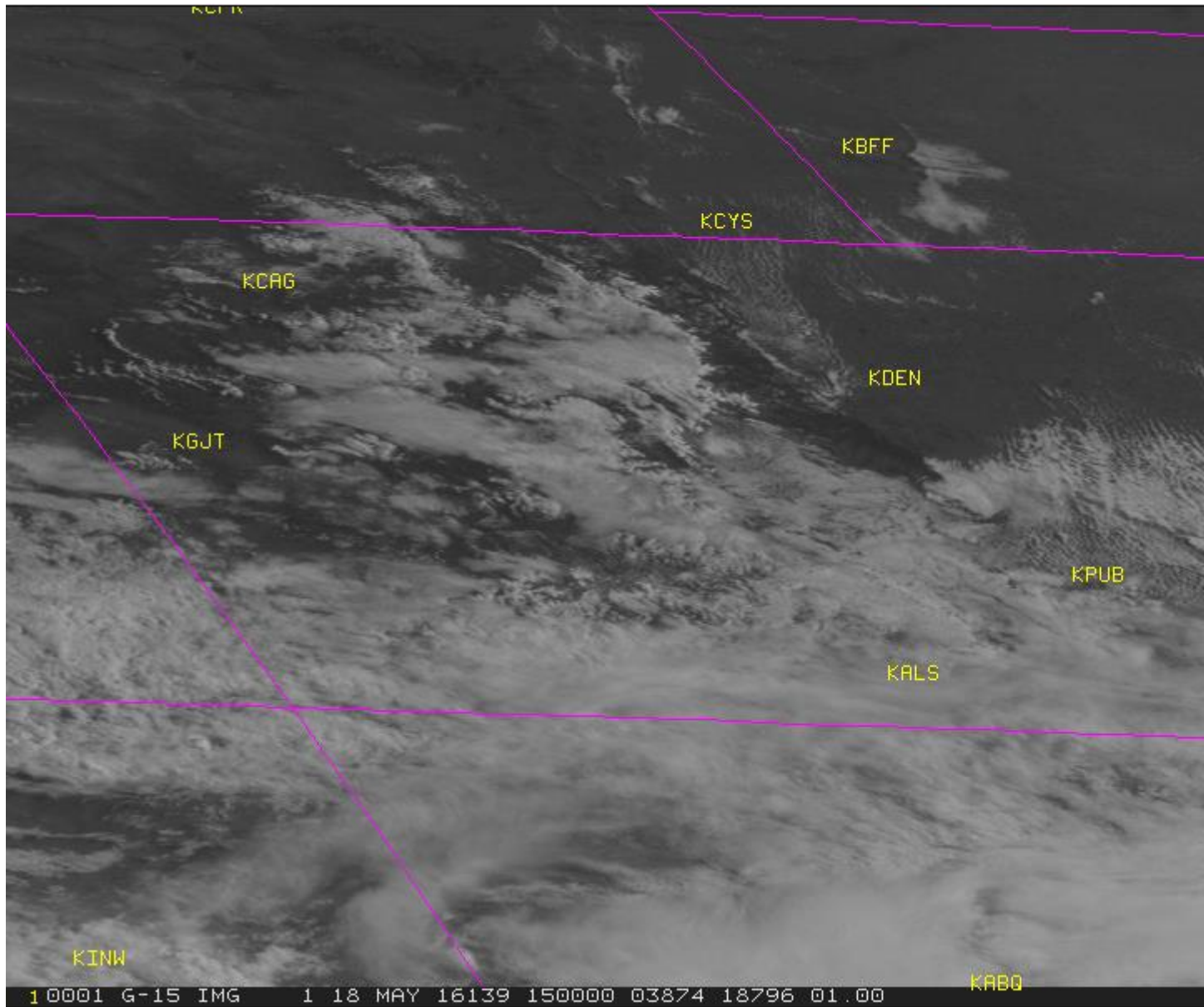
A plot of the METAR observations with the weather radar overlaid for 0900 MDT (1500Z) is included below.



Pilot Reports (UA/UUA) –

AKO UA /OV TXC179012/TM 1625/FL100/TP C82R/TA 04/IC LGT RIME/RM ZDV=

Satellite Imagery – the GOES-15 visible image at 0900 MDT (1500Z) with the accident site marked. Multiple layers of clouds over the route.



Terminal Aerodrome Forecast (TAF) -

TAF KDEN 181440Z 1815/1918 19011KT P6SM FEW040 SCT200
FM181900 14008KT P6SM FEW060 SCT100
FM182200 17010KT P6SM VCSH SCT060 SCT100 BKN200
FM190100 21012KT P6SM SCT060 SCT100

FM190400 19010KT P6SM SCT200
FM191400 23006KT P6SM SCT200

Area Forecast (FA) – for the route of flight:

FAUS45 KPCI 181045

FA5W

-SLCC FA 181045

SYNOPSIS AND VFR CLDS/WX

SYNOPSIS VALID UNTIL 190500

CLDS/WX VALID UNTIL 182300...OTLK VALID 182300-190500

ID MT WY NV UT CO AZ NM

SEE AIRMET SIERRA FOR IFR CONDS AND MTN OBSCN.

TS IMPLY SEV OR GTR TURB SEV ICE LLWS AND IFR CONDS.

NON MSL HGTS DENOTED BY AGL OR CIG.

SYNOPSIS...ALF...UPR LOW IS OVR S CNTRL AZ AND WL MOV SLOLY EWD
AND GRDLY WKN OVR WRN-CNTRL NM BY 00Z. MOD WLY TO SWLY FLOW ON S
SIDE OF THE LOW EXTDS FM NW MEX TO SRN NM. UPR RDG FM SW OR TO MT
WL SHFT SLOLY SWD ANW WKN.

SFC...STNR FNT EXTDS FM S OF THE TX BIG BEND AREA TO SE AZ. UPSLP
ELY FLOW WL CONT OVR ERN NM.

ID

NRN...BKN CI. OTLK...VFR.

CNTRL MTNS...SCT-BKN CI. 21Z SCT100 SCT140. ISOL -SHRA/-TSRA ERN SXNS. CB TOPS FL360. OTLK...VFR.

SWRN...SKC. 16Z SCT-BKN CI. OTLK...VFR.

SERN...SCT120-140. 20Z SCT100 SCT140. ISOL -TSRA. CB TOPS FL360. OTLK...VFR.

UT

NRN HLF...SCT120-140. BECMG 2022 SCT100 SCT150. ISOL -TSRA. CB TOP FL360. OTLK...VFR.

SRN HLF...

WRN SXNS...SCT120-140. 20Z SCT100 SCT140. ISOL -TSRA. CB TOPS FL370. OTLK...VFR.

ERN SXNS...SCT100 BKN140 TOPS FL180. ISOL -SHRA. BECMG 1821 SCT100 SCT-BKN140. ISOL TO WDLY SCT -TSRA.
CB TOPS FL370. OTLK...VFR.

CO

PLAINS...BKN070-080 TOPS 100. 18Z BKN100-120. OTLK...VFR.

MTNS E OF CONTDVD/FOOTHILLS...BKN080-090 TOPS 140. 17Z SCT-BKN100-120. BECMG 1821 WDLY SCT -SHRA/-
TSRA.

CB TOPS FL380. OTLK...VFR SHRA TSRA..03Z VFR.

MTNS W OF CONTDVD...

SRN SXNS...SCT-BKN080-100 TOPS 150. BECMG 1720 SCT-BKN100-120 TOPS FL180. WDLY SCT -SHRA/-TSRA.

CB TOPS FL380. OTLK...VFR SHRA TSRA..03Z VFR.

NRN SXNS...SCT140 SCT CI. BECMG 1720 SCT110 SCT-BKN150 TOPS FL180. ISOL TO WDLY SCT -SHRA/-TSRA.

CB TOPS FL360. OTLK...VFR SHRA TSRA..03Z VFR.

FAUS43 KPCI 180945

FA3W

DFWC FA 180945

*SYNOPSIS AND VFR CLDS/WX
SYNOPSIS VALID UNTIL 190400
CLDS/WX VALID UNTIL 182200...OTLK VALID 182200-190400
OK TX AR TN LA MS AL*

*.
SEE AIRMET SIERRA FOR IFR CONDS AND MTN OBSCN.
TS IMPLY SEV OR GTR TURB SEV ICE LLWS AND IFR CONDS.
NON MSL HGTS DENOTED BY AGL OR CIG.*

*.
SYNOPSIS...09Z CDFNT FM ECNTRL AL-SRN LA-SRN TX. BY 04Z STNR FNT FM SRN AL-
SRN LA-TX CSTL WTRS-LWR RIO GRANDE TX.*

*.
OK
W...*

*PNHDL...OVC040 LYRD FL280. 21Z OVC070. OTLK...VFR.
RMNDR...OVC035 LYRD 160. VIS 5SM BR. 17Z SCT040 SCT CI. 21Z SCT-BKN070 TOP 150. OTLK...VFR.
CNTRL...OVC020 TOP 040. TIL 11Z OCNL -SHRA. 18Z BKN035. 21Z BKN050 TOP 070. OTLK...VFR.
E...OVC015 TOP 040. 15Z BKN030. 19Z BKN040 TOP 050. 21Z SCT060. OTLK...VFR.*

In-Flight Weather Advisories -

All active SIGMETs – AIRMET images replaced by G-AIRMET

chart created at 1456 UTC Wed 18 May 2016

SIGMETs expire at or before 1655z/18th




Turbulence
AIRMET


Icing
AIRMET

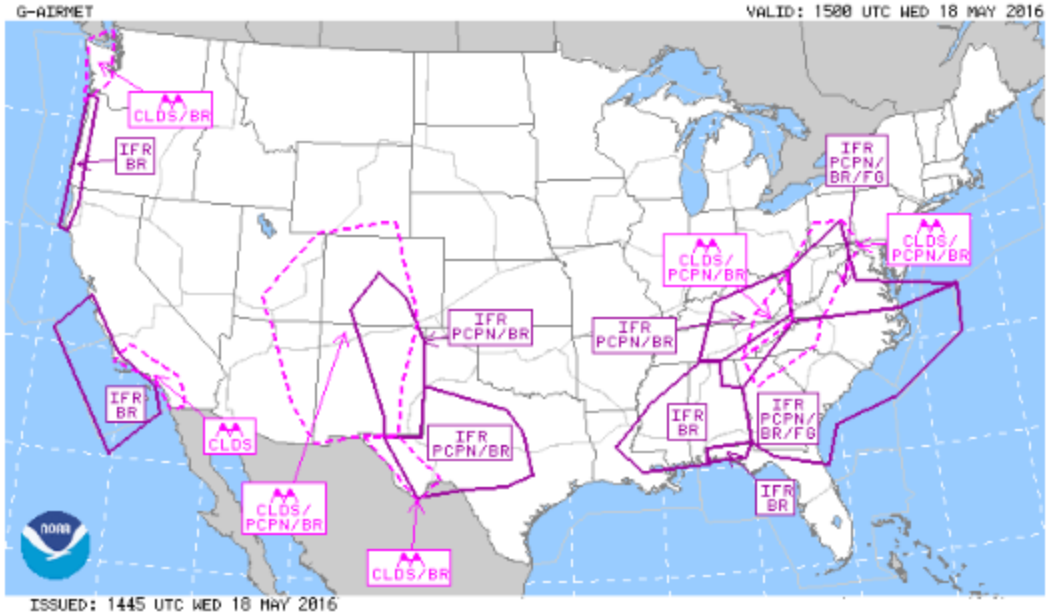
IFR
Instrument
Flight Rules
AIRMET

MTOS
Mountain
Obscuration
AIRMET


Convective
Outlook


Convective
SIGMET

SIERRA 2016-05-18 15:00:00



WAUS45 KPCI 181445

WAST

-SLCT WA 181445

AIRMET TANGO UPDT 3 FOR TURB VALID UNTIL 182100

AIRMET TURB...CO AZ NM

FROM 30S GLD TO 50W LBL TO 30ESE TBE TO 50SSW TXO TO ELP TO 50S TUS TO BZA TO 30SE TBC TO HBU TO 30S GLD

MOD TURB BTN FL250 AND FL390. CONDS CONTG BYD 21Z THRU 03Z.

OTLK VALID 2100-0300Z...TURB NV WA OR CA AND CSTL WTRS

BOUNDED BY 50SW SEA-40E PDT-40WNW BAM-20E RBL-50SSE OED-60NNW FOT-70SSW HQM-50SW SEA

MOD TURB BTN FL240 AND FL410. CONDS DVLPG 21-00Z. CONDS CONTG THRU 03Z.

WAUS43 KPCI 181445

WA3T

-CHIT WA 181445

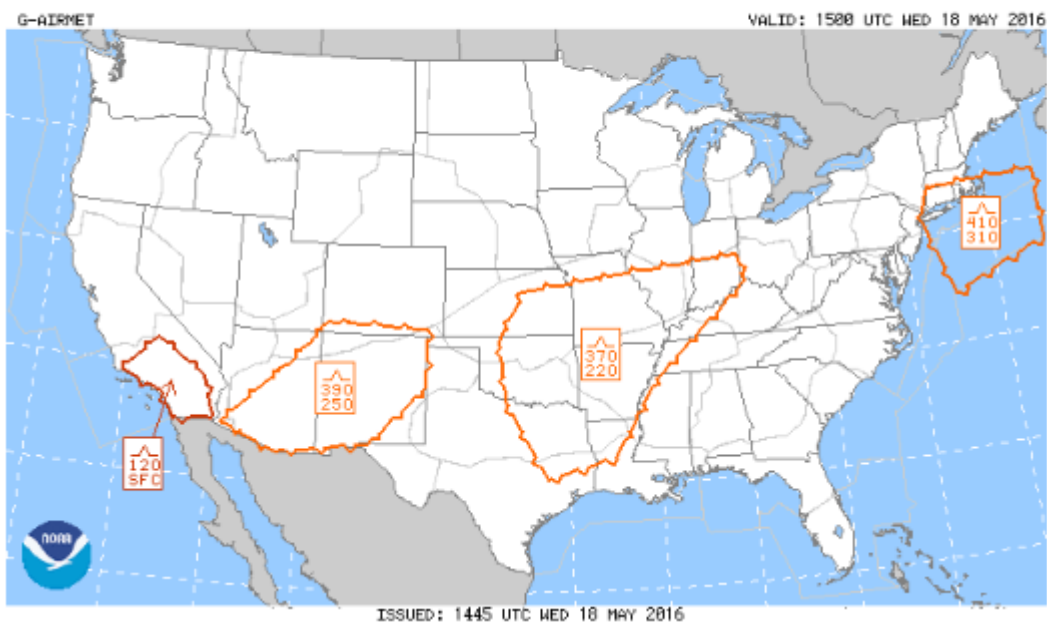
AIRMET TANGO UPDT 3 FOR TURB VALID UNTIL 182100

AIRMET TURB...NE KS MO IL IN KY OK TX AR TN LA MS AL

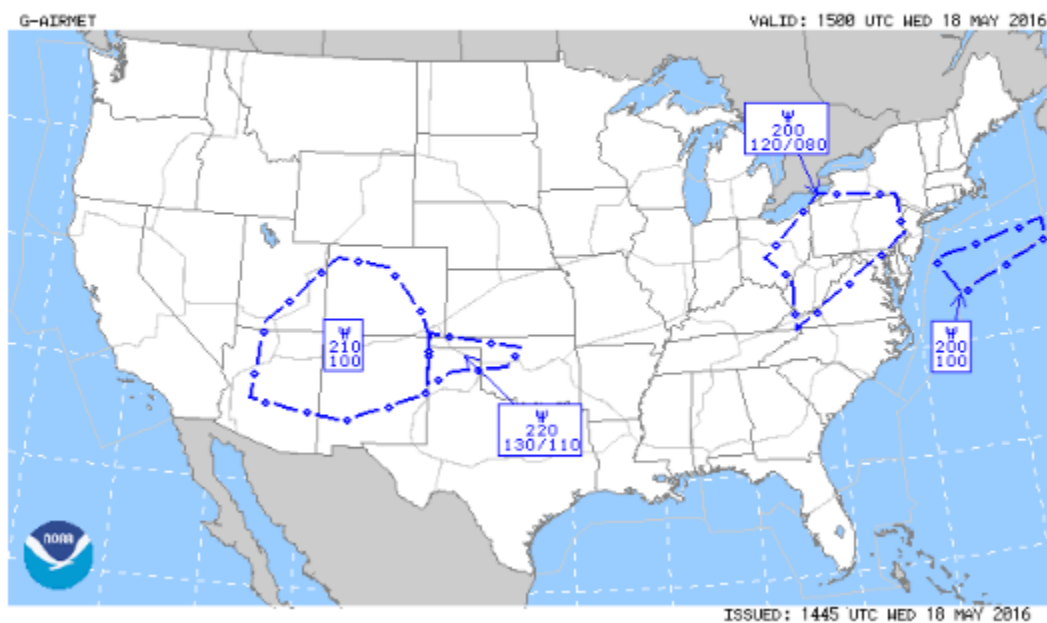
FROM 40SSE FWA TO CVG TO 20S BNA TO AEX TO 50WNW IAH TO 70W ACT TO 50SSW TXO TO 30ESE TBE TO 50W LBL TO 30S GLD TO PWE TO UIN TO 40SSE FWA

MOD TURB BTN FL220 AND FL370. CONDS CONTG BYD 21Z THRU 03Z.

TANGO 2016-05-18 15:00:00



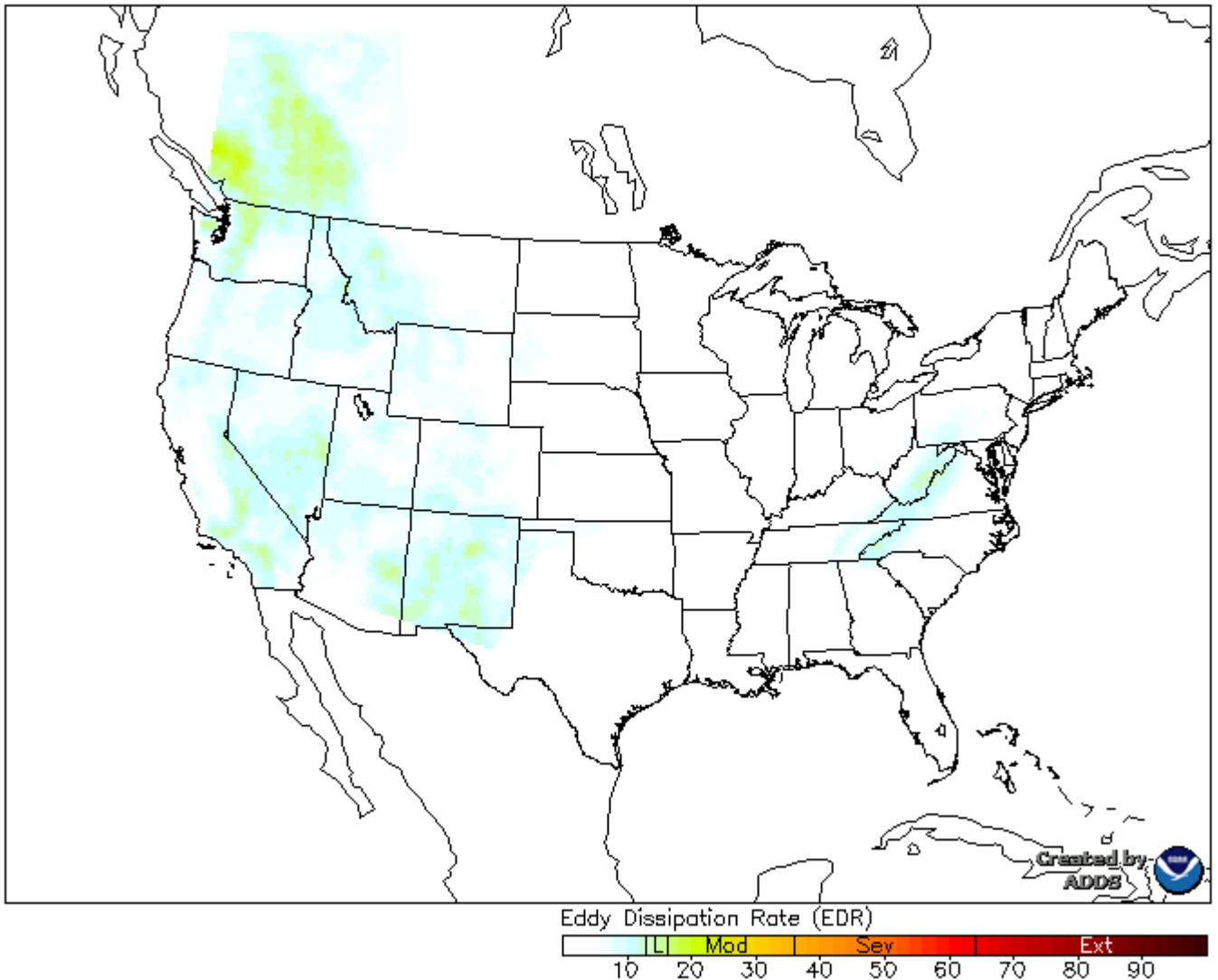
ZULU 2016-05-18 15:00:00



Graphical Turbulence Guidance (GTG) –

GTG - Mountain wave at 17000 ft. MSL

00 hr forecast valid 1800 UTC Wed 18 May 2016



No significant turbulence noted at 17,000 feet.

Donald E. Eick
Senior Meteorologist
National Transportation Safety Board
Office of Aviation Safety
Operational Factors Division (AS-30)
490 L'Enfant Plaza East, SW
Washington, D.C. 20594-2000

