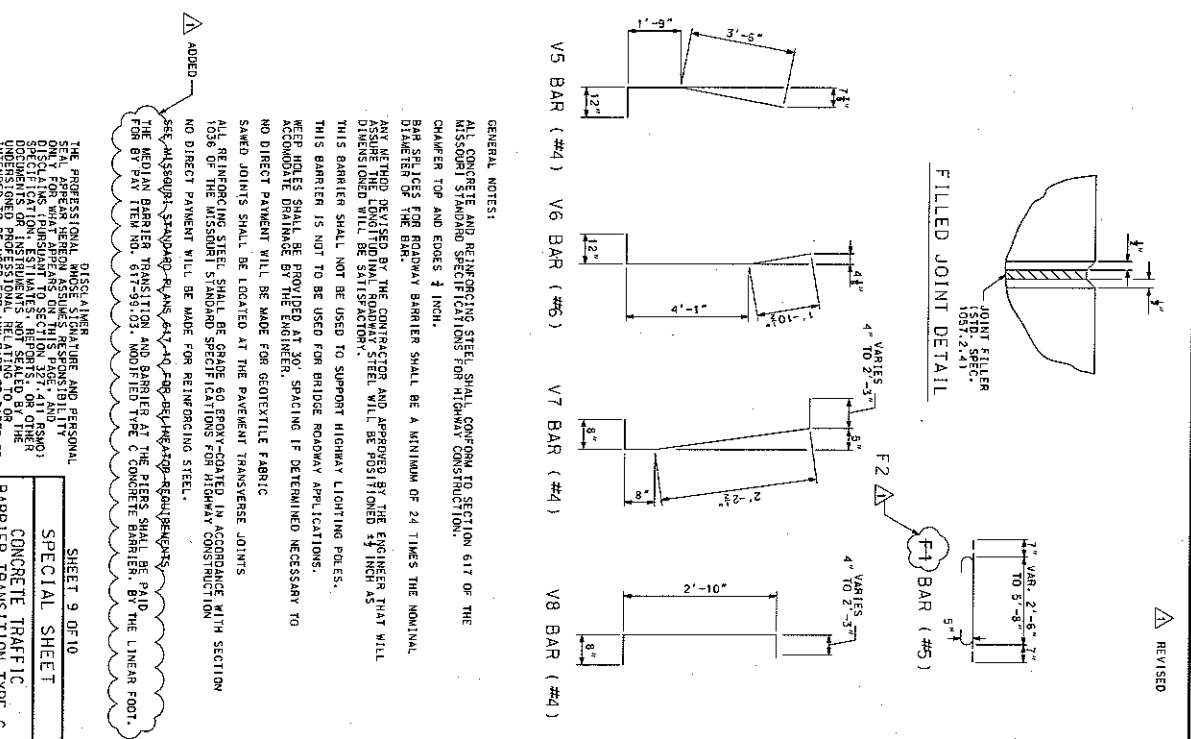
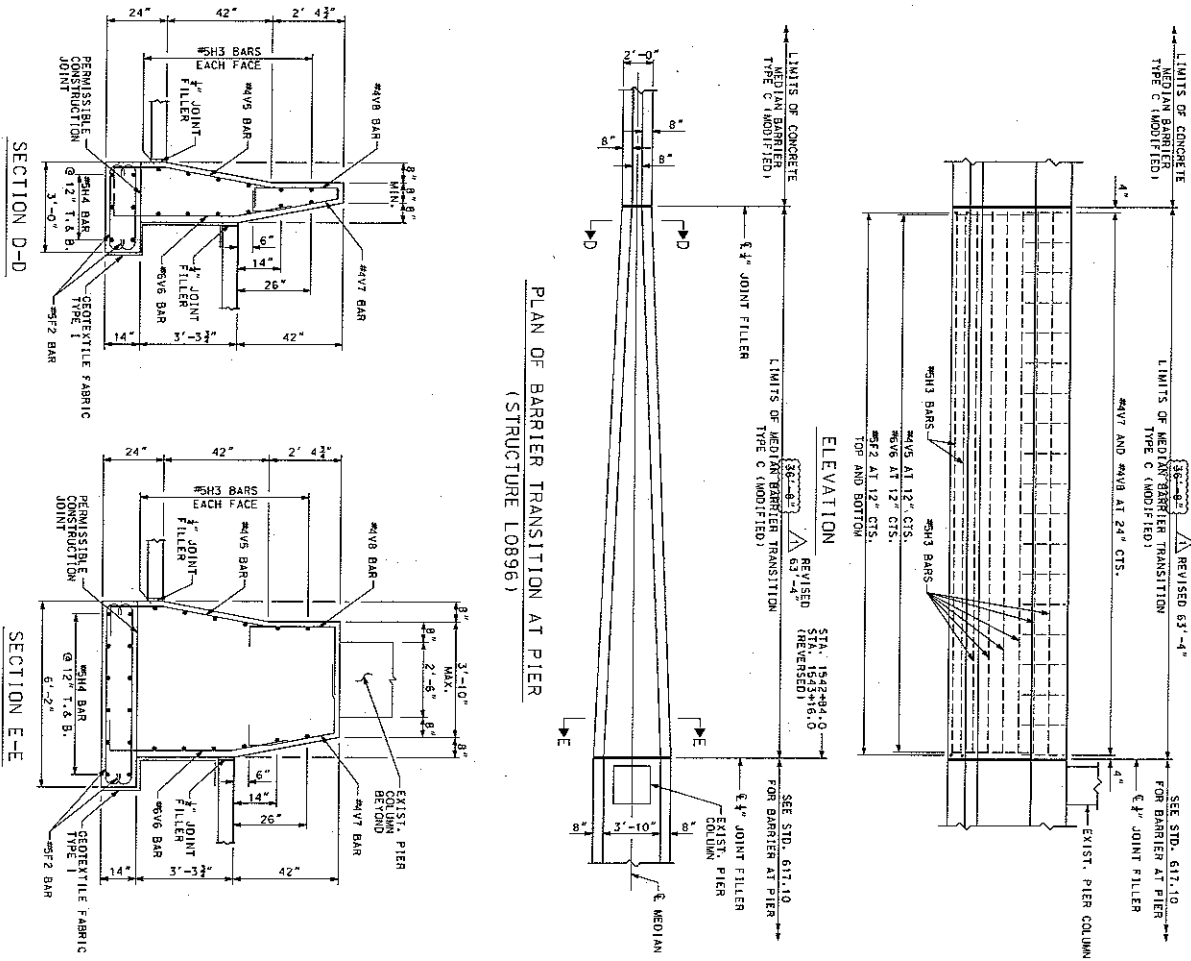


GRAY SUMMIT, MISSOURI
HIGHWAY ATTACHMENT 3
WORK ZONE TRAFFIC CONTROL PLAN
22 PAGES



GENERAL NOTES:

ALL CONCRETE AND REINFORCING STEEL SHALL CONFORM TO SECTION 617 OF THE MISSOURI STANDARD SPECIFICATIONS FOR HIGHWAY CONSTRUCTION.

CHAMFER TOP AND EDGES 1/4 INCH.

BAR SPACES FOR ROADWAY BARRIER SHALL BE A MINIMUM OF 24 TIMES THE NOMINAL DIAMETER OF THE BAR.

ANY METHOD DEvised BY THE CONTRACTOR AND APPROVED BY THE ENGINEER THAT WILL ACCOMMODATE DRAINAGE WILL BE SATISFACTORY.

THIS BARRIER SHALL NOT BE USED TO SUPPORT HIGHWAY LIGHTING FIXTURES.

KEEP HOLES SHALL BE PROVIDED AT 30' SPACING IF DETERMINED NECESSARY TO ACCOMMODATE DRAINAGE BY THE ENGINEER.

NO DIRECT PAYMENT WILL BE MADE FOR GEOTEXTILE FABRIC.

SAVED JOINTS SHALL BE LOCATED AT THE PAYMENT TRANSVERSE JOINTS.

ALL REINFORCING STEEL SHALL BE GRADE 60 EPOXY-COATED IN ACCORDANCE WITH SECTION 706 OF THE MISSOURI STANDARD SPECIFICATIONS FOR HIGHWAY CONSTRUCTION.

NO DIRECT PAYMENT WILL BE MADE FOR REINFORCING STEEL.

SEE ASSIGNED DRAWINGS FOR ALL BARS AND JOINTS TO BE PAID FOR BY THE LINEAR FOOT.

THE PROFESSIONAL ENGINEER'S RESPONSIBILITY IS TO VERIFY THE DESIGN AND CONSTRUCTION OF THE BARRIER TRANSITION AND BARRIER AT THE PIER, SHALL BE PAID FOR BY THE LINEAR FOOT.

ADDED:

THE PROFESSIONAL ENGINEER'S RESPONSIBILITY IS TO VERIFY THE DESIGN AND CONSTRUCTION OF THE BARRIER TRANSITION AND BARRIER AT THE PIER, SHALL BE PAID FOR BY THE LINEAR FOOT.

REVISIONS:

NO. 1 DATE 6/5/2009 DESCRIPTION

NO. 2 DATE 6/5/2009 DESCRIPTION

NO. 3 DATE 6/5/2009 DESCRIPTION

NO. 4 DATE 6/5/2009 DESCRIPTION

NO. 5 DATE 6/5/2009 DESCRIPTION

NO. 6 DATE 6/5/2009 DESCRIPTION

NO. 7 DATE 6/5/2009 DESCRIPTION

NO. 8 DATE 6/5/2009 DESCRIPTION

NO. 9 DATE 6/5/2009 DESCRIPTION

NO. 10 DATE 6/5/2009 DESCRIPTION

NO. 11 DATE 6/5/2009 DESCRIPTION

NO. 12 DATE 6/5/2009 DESCRIPTION

NO. 13 DATE 6/5/2009 DESCRIPTION

NO. 14 DATE 6/5/2009 DESCRIPTION

NO. 15 DATE 6/5/2009 DESCRIPTION

NO. 16 DATE 6/5/2009 DESCRIPTION

NO. 17 DATE 6/5/2009 DESCRIPTION

NO. 18 DATE 6/5/2009 DESCRIPTION

NO. 19 DATE 6/5/2009 DESCRIPTION

NO. 20 DATE 6/5/2009 DESCRIPTION

NO. 21 DATE 6/5/2009 DESCRIPTION

NO. 22 DATE 6/5/2009 DESCRIPTION

NO. 23 DATE 6/5/2009 DESCRIPTION

NO. 24 DATE 6/5/2009 DESCRIPTION

NO. 25 DATE 6/5/2009 DESCRIPTION

NO. 26 DATE 6/5/2009 DESCRIPTION

NO. 27 DATE 6/5/2009 DESCRIPTION

NO. 28 DATE 6/5/2009 DESCRIPTION

NO. 29 DATE 6/5/2009 DESCRIPTION

NO. 30 DATE 6/5/2009 DESCRIPTION

NO. 31 DATE 6/5/2009 DESCRIPTION

NO. 32 DATE 6/5/2009 DESCRIPTION

NO. 33 DATE 6/5/2009 DESCRIPTION

NO. 34 DATE 6/5/2009 DESCRIPTION

NO. 35 DATE 6/5/2009 DESCRIPTION

NO. 36 DATE 6/5/2009 DESCRIPTION

NO. 37 DATE 6/5/2009 DESCRIPTION

NO. 38 DATE 6/5/2009 DESCRIPTION

NO. 39 DATE 6/5/2009 DESCRIPTION

NO. 40 DATE 6/5/2009 DESCRIPTION

NO. 41 DATE 6/5/2009 DESCRIPTION

NO. 42 DATE 6/5/2009 DESCRIPTION

NO. 43 DATE 6/5/2009 DESCRIPTION

NO. 44 DATE 6/5/2009 DESCRIPTION

NO. 45 DATE 6/5/2009 DESCRIPTION

NO. 46 DATE 6/5/2009 DESCRIPTION

NO. 47 DATE 6/5/2009 DESCRIPTION

NO. 48 DATE 6/5/2009 DESCRIPTION

NO. 49 DATE 6/5/2009 DESCRIPTION

NO. 50 DATE 6/5/2009 DESCRIPTION

NO. 51 DATE 6/5/2009 DESCRIPTION

NO. 52 DATE 6/5/2009 DESCRIPTION

NO. 53 DATE 6/5/2009 DESCRIPTION

NO. 54 DATE 6/5/2009 DESCRIPTION

NO. 55 DATE 6/5/2009 DESCRIPTION

NO. 56 DATE 6/5/2009 DESCRIPTION

NO. 57 DATE 6/5/2009 DESCRIPTION

NO. 58 DATE 6/5/2009 DESCRIPTION

NO. 59 DATE 6/5/2009 DESCRIPTION

NO. 60 DATE 6/5/2009 DESCRIPTION

NO. 61 DATE 6/5/2009 DESCRIPTION

NO. 62 DATE 6/5/2009 DESCRIPTION

NO. 63 DATE 6/5/2009 DESCRIPTION

NO. 64 DATE 6/5/2009 DESCRIPTION

NO. 65 DATE 6/5/2009 DESCRIPTION

NO. 66 DATE 6/5/2009 DESCRIPTION

NO. 67 DATE 6/5/2009 DESCRIPTION

NO. 68 DATE 6/5/2009 DESCRIPTION

NO. 69 DATE 6/5/2009 DESCRIPTION

NO. 70 DATE 6/5/2009 DESCRIPTION

NO. 71 DATE 6/5/2009 DESCRIPTION

NO. 72 DATE 6/5/2009 DESCRIPTION

NO. 73 DATE 6/5/2009 DESCRIPTION

NO. 74 DATE 6/5/2009 DESCRIPTION

NO. 75 DATE 6/5/2009 DESCRIPTION

NO. 76 DATE 6/5/2009 DESCRIPTION

NO. 77 DATE 6/5/2009 DESCRIPTION

NO. 78 DATE 6/5/2009 DESCRIPTION

NO. 79 DATE 6/5/2009 DESCRIPTION

NO. 80 DATE 6/5/2009 DESCRIPTION

NO. 81 DATE 6/5/2009 DESCRIPTION

NO. 82 DATE 6/5/2009 DESCRIPTION

NO. 83 DATE 6/5/2009 DESCRIPTION

NO. 84 DATE 6/5/2009 DESCRIPTION

NO. 85 DATE 6/5/2009 DESCRIPTION

NO. 86 DATE 6/5/2009 DESCRIPTION

NO. 87 DATE 6/5/2009 DESCRIPTION

NO. 88 DATE 6/5/2009 DESCRIPTION

NO. 89 DATE 6/5/2009 DESCRIPTION

NO. 90 DATE 6/5/2009 DESCRIPTION

NO. 91 DATE 6/5/2009 DESCRIPTION

NO. 92 DATE 6/5/2009 DESCRIPTION

NO. 93 DATE 6/5/2009 DESCRIPTION

NO. 94 DATE 6/5/2009 DESCRIPTION

NO. 95 DATE 6/5/2009 DESCRIPTION

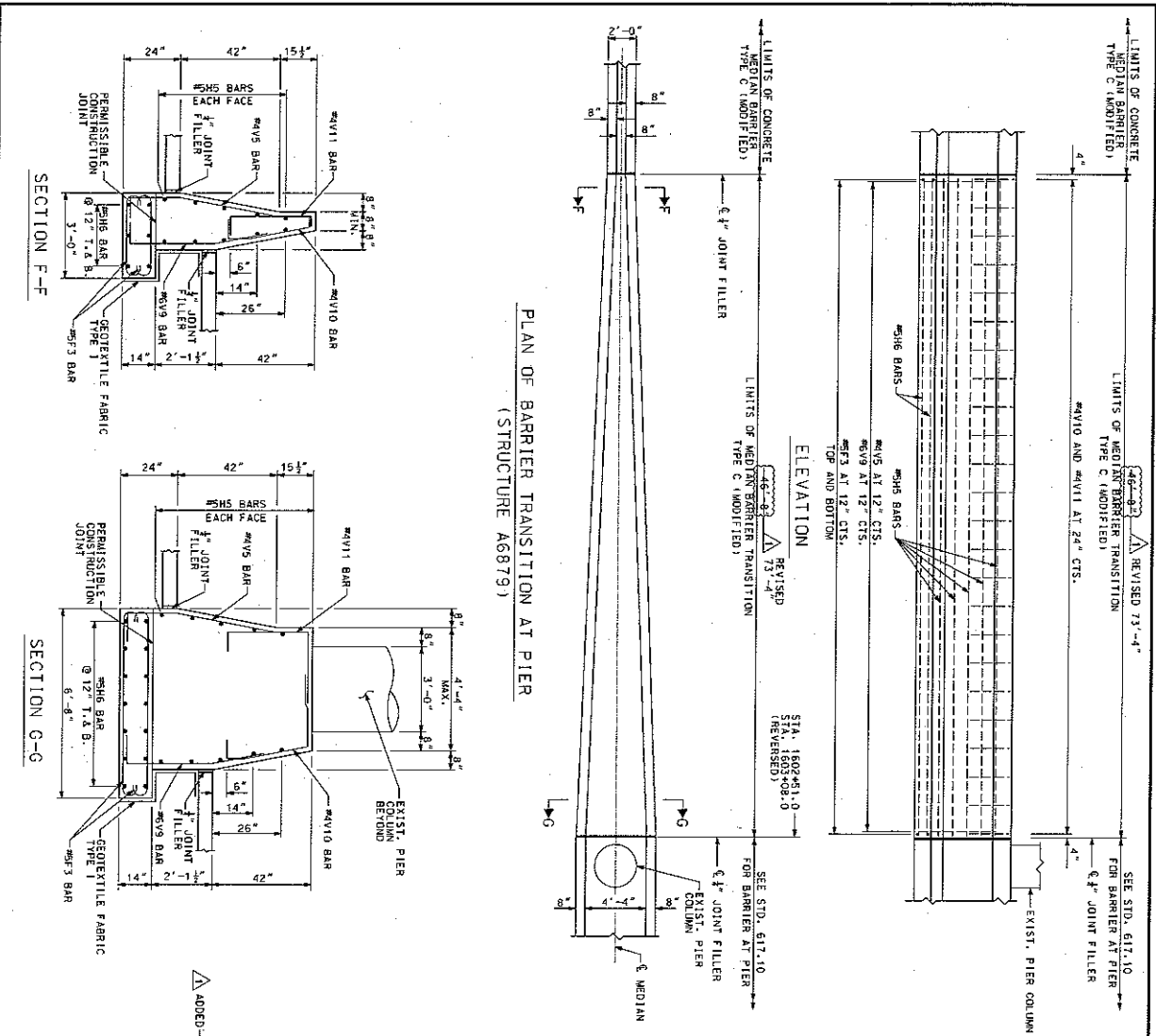
NO. 96 DATE 6/5/2009 DESCRIPTION

NO. 97 DATE 6/5/2009 DESCRIPTION

NO. 98 DATE 6/5/2009 DESCRIPTION

NO. 99 DATE 6/5/2009 DESCRIPTION

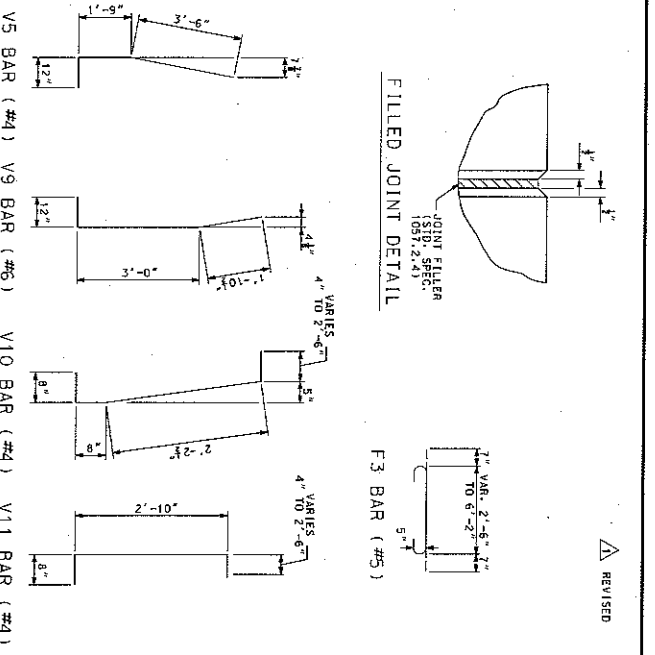
NO. 100 DATE 6/5/2009 DESCRIPTION



PLAN OF BARRIER TRANSITION AT PIER
(STRUCTURE A6879)

SECTION F-F

SECTION G-G



GENERAL NOTES:

ALL CONCRETE AND REINFORCING STEEL SHALL CONFORM TO SECTION 617 OF THE MISSOURI STANDARD SPECIFICATIONS FOR HIGHWAY CONSTRUCTION.

CHAMFER TOP AND EDGES 1/4 INCH.

BAR SPICES FOR ROADWAY BARRIER SHALL BE A MINIMUM OF 24 TIMES THE NOMINAL DIAMETER OF THE BAR.

ANY METHOD DEVISED BY THE CONTRACTOR AND APPROVED BY THE ENGINEER THAT WILL ASSURE THE LONGITUDINAL ROADWAY STEEL WILL BE POSITIONED 1/4 INCH AS DISCLOSED WILL BE SATISFACTORY.

THIS BARRIER SHALL NOT BE USED TO SUPPORT HIGHWAY LIGHTING POLES.

THIS BARRIER IS NOT TO BE USED FOR BRIDGE ROADWAY APPLICATIONS.

WEED NOTES SHALL BE PROVIDED AT 30' SPACING IF DETERMINED NECESSARY TO ACCOMMODATE DRAINAGE BY THE ENGINEER.

NO DIRECT PAYMENT WILL BE MADE FOR GEOTEXTILE FABRIC

SAND JOINTS SHALL BE LOCATED AT THE PAVEMENT TRANSVERSE JOINTS

ALL REINFORCING STEEL SHALL BE GRADE 60 EPOXY-COATED IN ACCORDANCE WITH SECTION 1036 OF THE MISSOURI STANDARD SPECIFICATIONS FOR HIGHWAY CONSTRUCTION

NO DIRECT PAYMENT WILL BE MADE FOR REINFORCING STEEL.

SEE MISSOURI STANDARD SPECIFICATIONS 617-10 FOR THE TOP OF ROADWAY

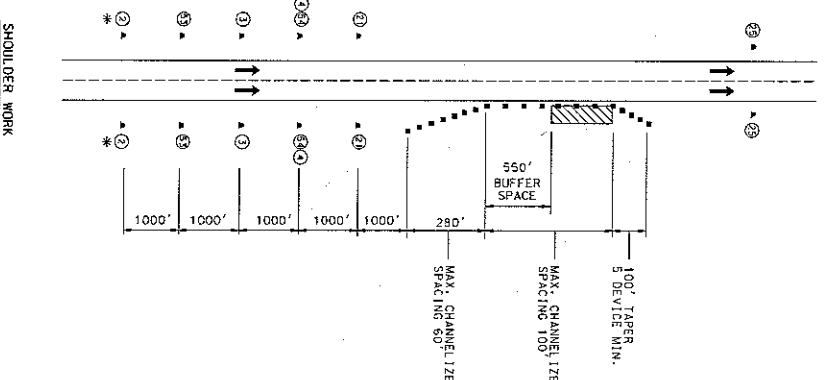
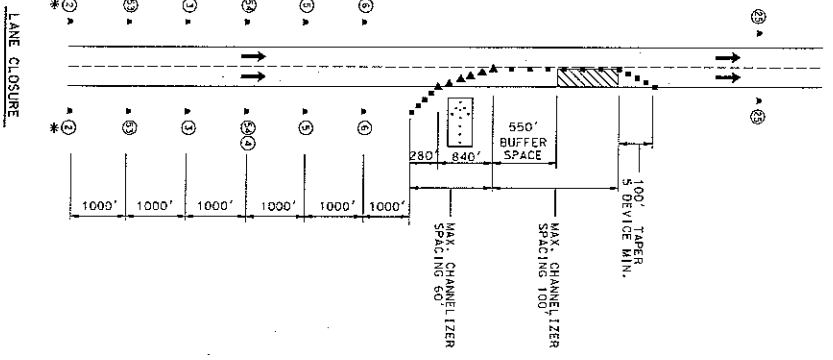
THE MEDIAN BARRIER TRANSITION AND BARRIER AT THE PIERS SHALL BE PAID FOR BY ITEM NO. 617-89.03, MODIFIED TYPE C CONCRETE BARRIER, BY THE LINEAR FOOT.

DISCLAIMER:

THE PROFESSIONAL ENGINEER'S SIGNATURE AND PERSONAL SEAL SHALL BE PLACED ON THIS SHEET AND SHALL BE THE ONLY ONE TO APPEAR ON THIS PAGE AND SHALL BE SUBJECT TO SECTION 327.411, R.S.M.O. 1992. THE PROFESSIONAL ENGINEER'S SIGNATURE AND SEAL SHALL BE THE ONLY ONE TO APPEAR ON THIS SHEET AND SHALL BE THE ONLY ONE TO APPEAR ON THIS SHEET AND SHALL BE THE ONLY ONE TO APPEAR ON THIS SHEET.

SHEET 10 OF 10
SPECIAL SHEET
CONCRETE TRAFFIC
BARRIER TRANSITION TYPE C
(MODIFIED)

		DATE: 6/5/2009 DESCRIPTION: CONCRETE TRAFFIC BARRIER TRANSITION TYPE C (MODIFIED)
Missouri Highways and Transportation Commission 105 WEST CAPITOL JEFFERSON CITY, MO 65102 1-888-654-MODO 11-888-275-6636		PROJECT NO.: CONTRACT TO: COUNTY: FRANKLIN DATE: 1-6-2011
Copyright CMT, Inc. CRAWFORD, MURPHY & TILLY, INC. ONE MEMORIAL DRIVE, SUITE 500 ST. LOUIS, MO 63102 (314) 436-5500 ENGINEERING CORPORATION - CDD631		DATE: 6/5/2009 DATE: 6/5/2009 I-44 MO DISTRICT: 6 SHEET NO.: 23



NOTES:
 SIGN (2) NOT NEEDED IF WORK IS LOCATED WITHIN THE LIMITS OF AN ACTIVITY AREA WHERE APPROPRIATE SPEED LIMIT EITHER NORMAL OR REDUCED, IS ESTABLISHED.
 CHANNELIZER SPACING SHALL BE ADJUSTED PER TABLE ON SHEET 3 OF 17 ON CURVES.
 ALL LENGTHS AND DEVICE SPACING ARE BASED ON THE 70 MPH SPEED LIMIT PRIOR TO CONSTRUCTION.
 INSTALL ADDITIONAL (59) AND (4) SIGNS AT END OF ENTRANCE RAMP DURING STAGE 1 CONSTRUCTION IF SPEED LIMIT SIGN PRECEDES RAMP ENTRANCE.

NOTES:
 SIGN (2) NOT NEEDED IF SHOULDER WORK IS LOCATED WITHIN THE LIMITS OF AN ACTIVITY AREA WHERE ANOTHER SIGN (2) IS ALREADY USED.
 SIGNS (1), (4), (29) AND (24) NOT NEEDED IF SHOULDER WORK IS LOCATED WITHIN THE LIMITS OF AN ACTIVITY AREA WHERE AN APPROPRIATE SPEED LIMIT, EITHER NORMAL OR REDUCED, IS ESTABLISHED.
 CHANNELIZER SPACING SHALL BE ADJUSTED PER TABLE ON SHEET 2 OF 16 ON CURVES.
 ALL LENGTHS AND DEVICE SPACING ARE BASED ON THE 70 MPH SPEED LIMIT PRIOR TO CONSTRUCTION.

* USE ADVANCED WARNING RAIL SYSTEM (SEE STD. PLANS 616-10)

THE PROFESSIONAL DISCLAIMER SEAL, APPEAR HEREON ASSURES RESPONSIBILITY ONLY FOR WHAT APPEARS ON THIS PAGE, AND SPECIFICATION, ESTIMATE, REPORTS, OR OTHER DOCUMENTS OR INSTRUMENTS NOT SEALED BY THE ENGINEER OR ARCHITECT, AND NOT INTENDED TO BE USED PERMANENT PARTS OF THE PROJECT TO WHICH THIS PAGE REFERS.

SHEET 4 OF 17
 TRAFFIC CONTROL PLAN
 DETAILS

Copyright CMT, Inc. MISSOURI HIGHWAYS AND TRANSPORTATION COMMISSION DATE DESCRIPTION

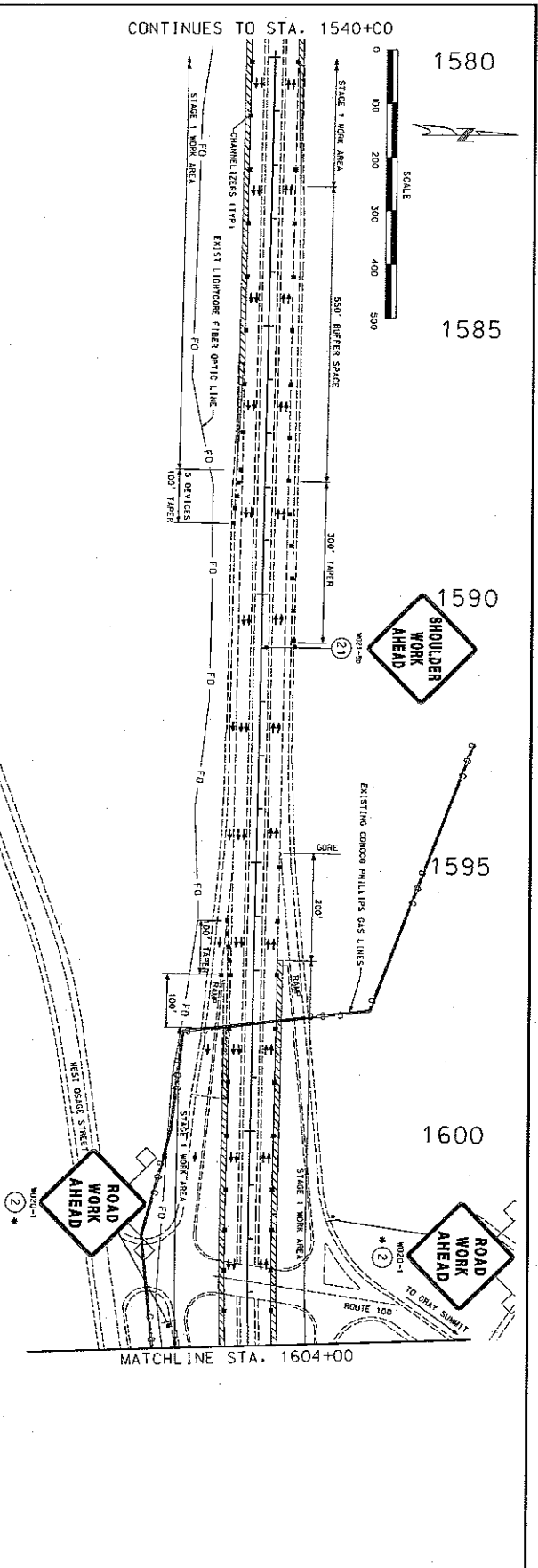
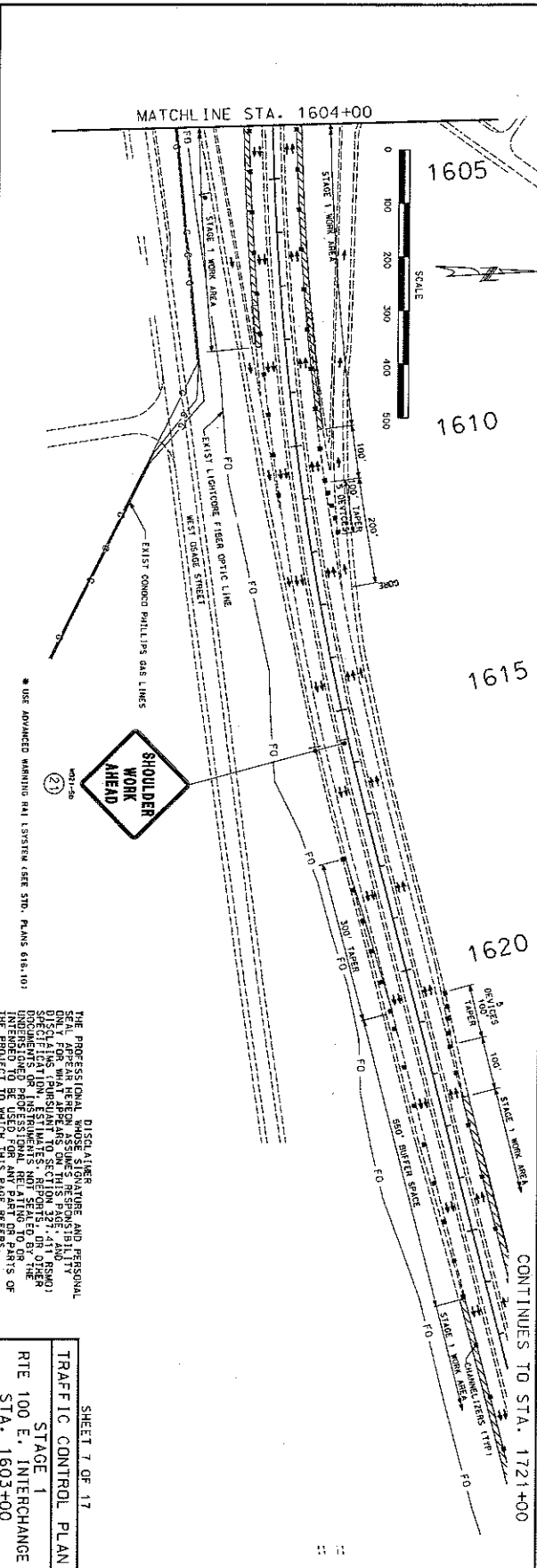


CMT
 CRAWFORD, MURPHY & TILLY, INC.
 ONE MEMORIAL DRIVE, SUITE 500
 ST. LOUIS, MO 63102 (314) 436-5500
 ENGINEERING CORPORATION - 000631

MISSOURI HIGHWAYS AND TRANSPORTATION COMMISSION
 105 WEST CAPITOL
 JEFFERSON CITY, MO 65102
 1-888-ASK-MODOT (1-888-275-6636)

DATE	DESCRIPTION

DATE PREPARED: 5/8/2009
 DRAWN BY: JMT
 CHECKED BY: JMT
 DATE: 5/8/2009
 PROJECT NO.: J612011
 CONTRACT NO.: FRANKLIN
 SHEET NO.: 27
 DATE: 5/8/2009
 PROJECT NO.: J612011
 CONTRACT NO.: FRANKLIN
 SHEET NO.: 27



SHEET 7 OF 17
 TRAFFIC CONTROL PLAN
 STAGE 1
 RTE 100 E. INTERCHANGE
 STA. 1603+00

THE PROFESSIONAL WHOSE SIGNATURE AND PERSONAL SEAL APPEAR HEREON ASSUMES RESPONSIBILITY FOR THE DESIGN, CONSTRUCTION, AND MAINTENANCE OF THE PROJECT AND FOR THE ACCURACY OF THE INFORMATION, ESTIMATES, REPORTS, OR OTHER DOCUMENTS PREPARED BY HIMSELF OR HIS EMPLOYEES. THIS PROFESSIONAL IS NOT PROVIDING ANY PART OR PARTS OF THE PROJECT TO WHICH THIS PAGE REFERS.

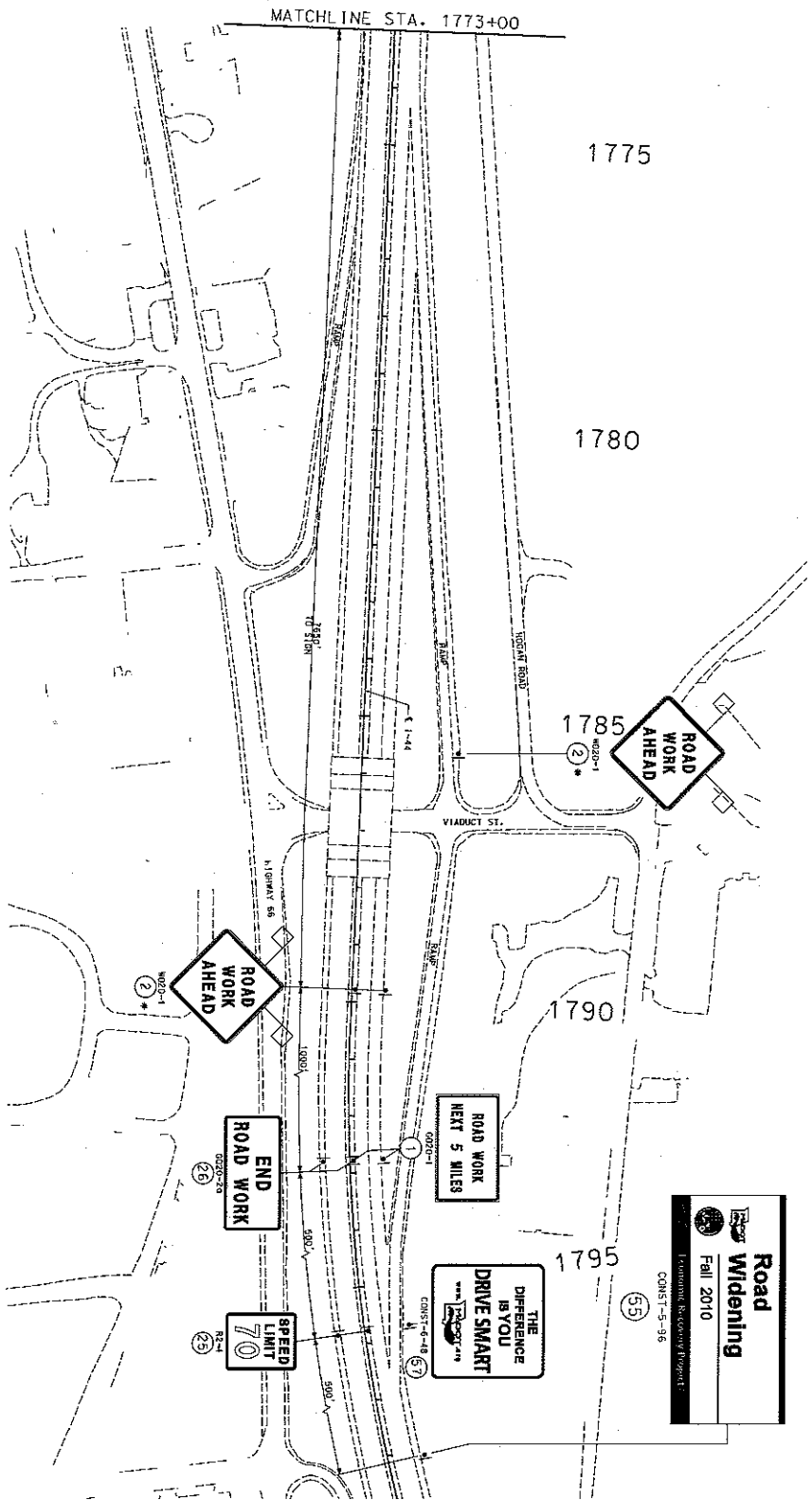
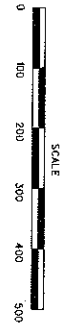
MISSOURI HIGHWAYS AND TRANSPORTATION COMMISSION
MoDOT
 105 WEST CAPITOL
 JEFFERSON CITY, MO 65102
 1-888-ASK-MODOT (1-888-275-6636)

DATE	DESCRIPTION

PROJECT NO. _____
 CONTRACT NO. _____
 COUNTY FRANKLIN
 DATE 5/8/2009
 DRAWN BY J-44
 CHECKED BY MO
 SCALE 1"=40'
 SHEET NO. 30 OF 30

STATE OF MISSOURI
 REGISTERED PROFESSIONAL ENGINEER
 No. 10000-1
 DATE 5/8/2009

Copyright CMT, Inc.
CMT
 CRAWFORD, MURPHY & TILLY, INC.
 ONE MEMORIAL DRIVE, SUITE 500
 ST. LOUIS, MO 63102 (314) 436-5500
 ENGINEERING CORPORATION - 000531



• USE ADVANCED WARNING RAIL SYSTEM (SEE STD. PLANS 616-10)

DISCLAIMER
THE PROFESSIONAL WHOSE SIGNATURE AND PERSONAL SEAL ARE HEREON, IS THE SOLE RESPONSIBILITY FOR ANY ERRORS OR OMISSIONS IN THIS DOCUMENT. THE PROFESSIONAL DOES NOT WARRANT OR GUARANTEE THE ACCURACY OF ANY INFORMATION CONTAINED HEREIN. THE PROFESSIONAL IS NOT RESPONSIBLE FOR ANY DAMAGE TO PROPERTY OR PERSONS ARISING FROM THE USE OF THIS DOCUMENT FOR ANY PURPOSE OTHER THAN THAT FOR WHICH IT WAS PREPARED.

TRAFFIC CONTROL PLAN
STAGE 1
RAMP SIGNING
STA. 1780+00

SHEET 9 OF 17

Road Widening
Fall 2010
CONSTR-5-96

DATE	DESCRIPTION

Copyright CMT, Inc.

CMT
CMT, JORDAN, MURPHY & TILLY, INC.
ONE MEMORIAL DRIVE, SUITE 500
ST. LOUIS, MO 63102 (314) 436-5500
ENGINEERING CORPORATION - 000631

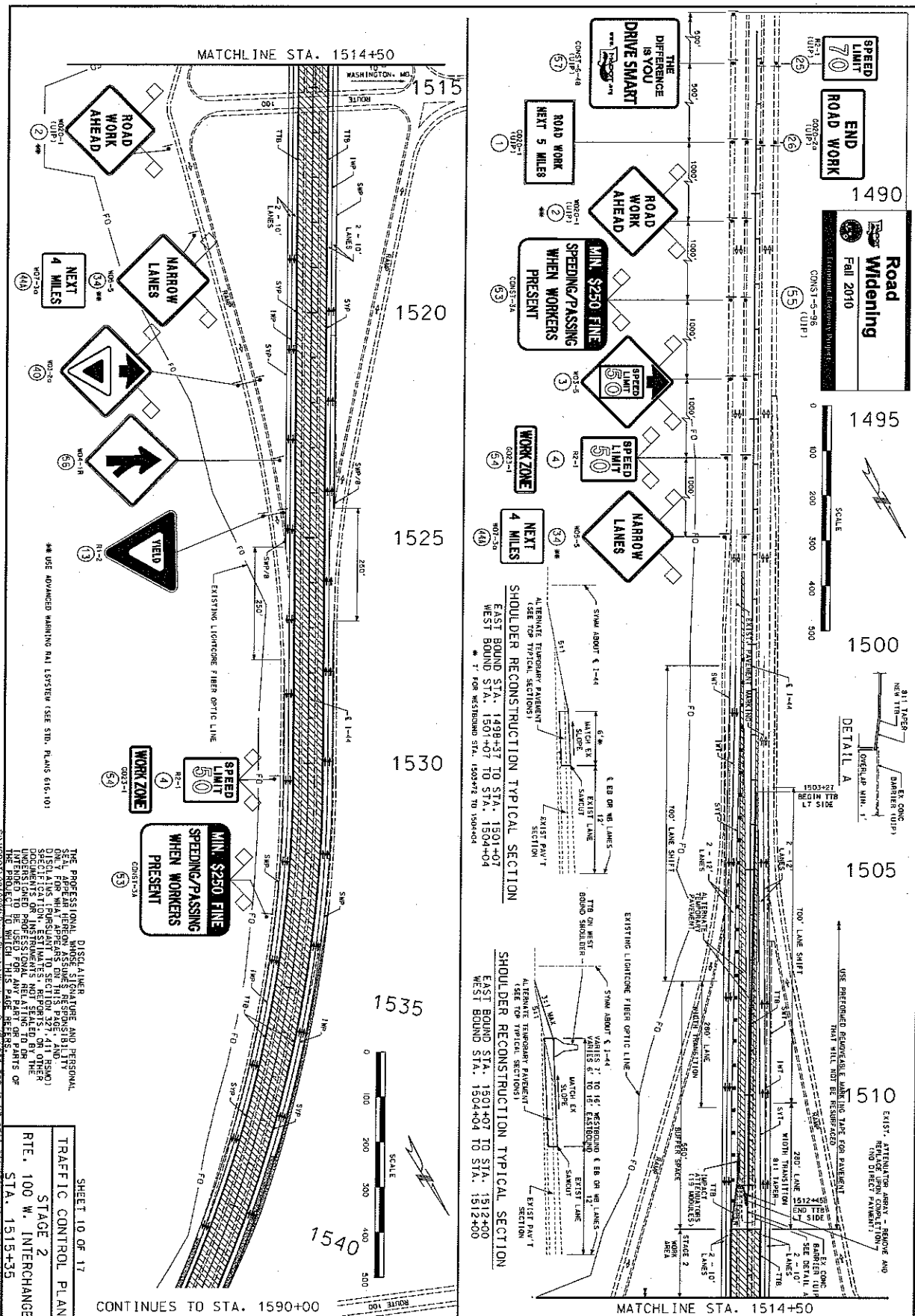
MISSOURI HIGHWAYS AND TRANSPORTATION COMMISSION

MoDOT

105 WEST CAPITOL
JEFFERSON CITY, MO 65102
1-888-ASK-MODOT (1-888-275-6636)



REV.



Copyright CMT, Inc.

MISSOURI HIGHWAYS AND TRANSPORTATION COMMISSION

DATE: 5/8/2005

DESCRIPTION: FRANKLIN

PROJECT NO.: 100 W. INTERCHANGE

STATION: STA. 1515+35

SCALE: 1" = 100'

TRAFFIC CONTROL PLAN

STAGE 2

RTE. 100 W. INTERCHANGE

STA. 1515+35

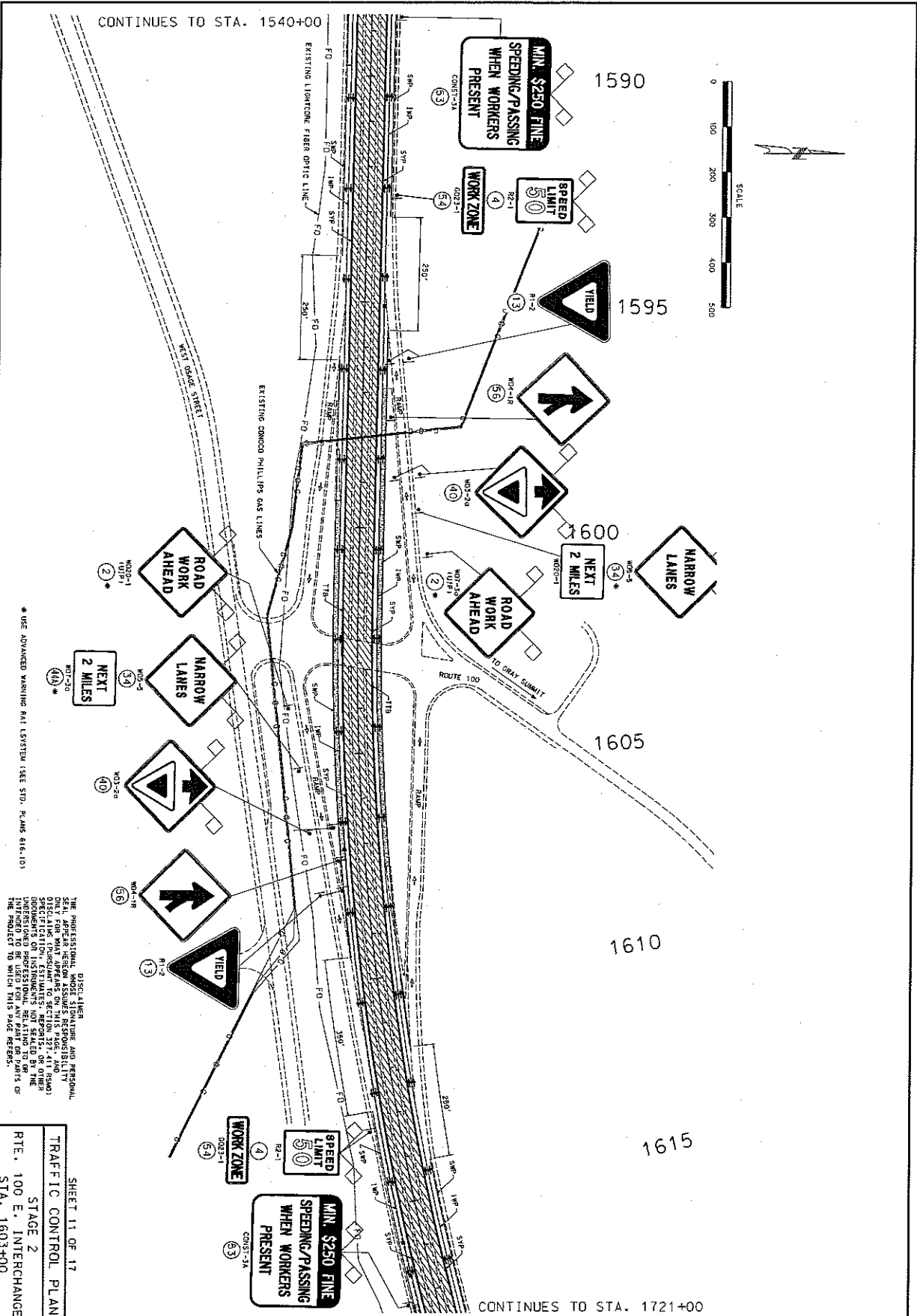
SHEET 10 OF 17

CMT
 CRAWFORD MURPHY & TILLY, INC.
 ONE MEMORIAL DRIVE, SUITE 500
 ST. LOUIS, MO 63102 (314) 436-5500
 ENGINEERING CORPORATION - 000631

105 WEST CAPITAL
 JEFFERSON CITY, MO 65102
 1-888-ASK-MODOT 11-888-275-9636

STATE OF MISSOURI
 REGISTERED PROFESSIONAL ENGINEER
 No. 10000
 EXPIRES 12/31/2006

THE PROFESSIONAL ENGINEER'S SIGNATURE AND PERSONAL SEAL ARE REQUIRED ON THIS PLAN. THE PROFESSIONAL ENGINEER'S SIGNATURE AND PERSONAL SEAL ARE REQUIRED ON THIS PLAN. THE PROFESSIONAL ENGINEER'S SIGNATURE AND PERSONAL SEAL ARE REQUIRED ON THIS PLAN.



CONTINUES TO STA. 1540+00

CONTINUES TO STA. 1721+00

TRAFFIC CONTROL PLAN
STAGE 2
RTE. 100 E. INTERCHANGE
STA. 1603+00

SHEET 11 OF 17

Copyright CMT, Inc.

MISSOURI HIGHWAYS AND TRANSPORTATION COMMISSION

DATE: _____ DESCRIPTION: _____

PROJECT NO.: _____ CONTRACT NO.: _____

STATE OF MISSOURI
DEPARTMENT OF TRANSPORTATION
FRANKLIN COUNTY
J612011

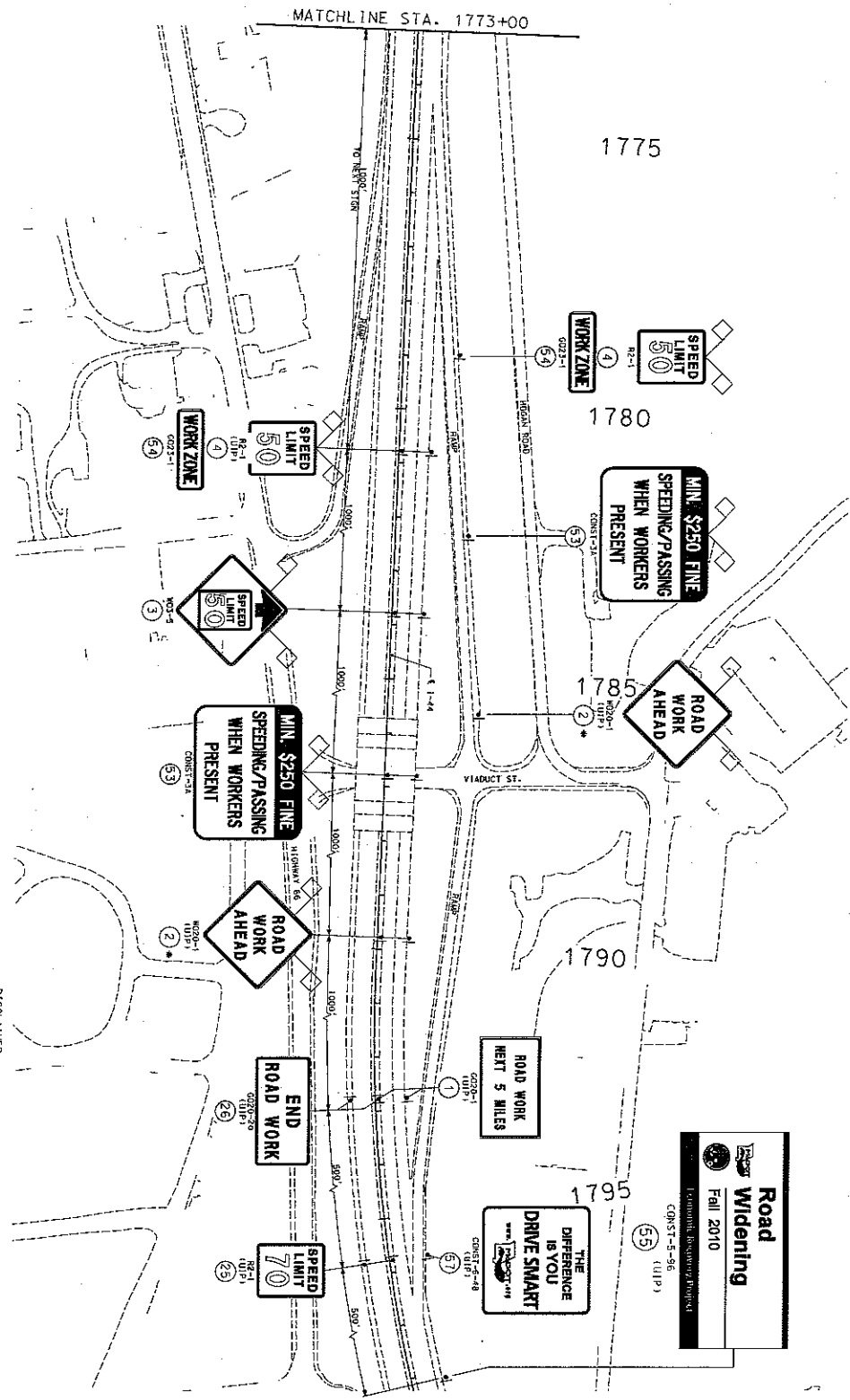
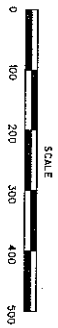
DATE PREPARED: 5/17/2008
DATE OF REVISION: 1-4-4 MO
DRAWN BY: _____
CHECKED BY: _____
SCALE: 3/4"

105 WEST CAPITOL
JEFFERSON CITY, MO 65102
1-888-ASK-MODOT (1-888-275-6636)

CMT
CMT GROUP, MURPHY & TILLY, INC.
ONE MEMORIAL DRIVE, SUITE 500
ST. LOUIS, MO 63102 (314) 436-5500
ENGINEERING CORPORATION - 000631

REV. _____

11/18/08 PM 5/8/2009



* USE ADVANCED WARNING PAI SYSTEM (SEE STD. PLANS 616.10)

NOTES: U/P OR RELOCATE SIGNS AS REQUIRED

DISCLAIMER
 THE PROFESSIONAL WHOSE SIGNATURE AND PERSONAL SEAL ARE HEREON AFFIXED IS NOT RESPONSIBLE FOR ANY ERRORS OR OMISSIONS IN THIS PLAN OR SPECIFICATIONS. THE PROFESSIONAL HAS NOT CONDUCTED A VISUAL SURVEY OF THE PROJECT AND HAS NOT BEEN ADVISED OF ANY CHANGES TO THE PROJECT SINCE THE DATE OF THE ORIGINAL DESIGN. THE PROFESSIONAL HAS NOT CONDUCTED A VISUAL SURVEY OF THE PROJECT AND HAS NOT BEEN ADVISED OF ANY CHANGES TO THE PROJECT SINCE THE DATE OF THE ORIGINAL DESIGN. THE PROFESSIONAL HAS NOT CONDUCTED A VISUAL SURVEY OF THE PROJECT AND HAS NOT BEEN ADVISED OF ANY CHANGES TO THE PROJECT SINCE THE DATE OF THE ORIGINAL DESIGN.

SHEET 13 OF 17
 STAGE 2
 END OF WORK
 STA. 1727+77

Road Widening
 Fall 2010
 CONSTRUCTION REQUIRED

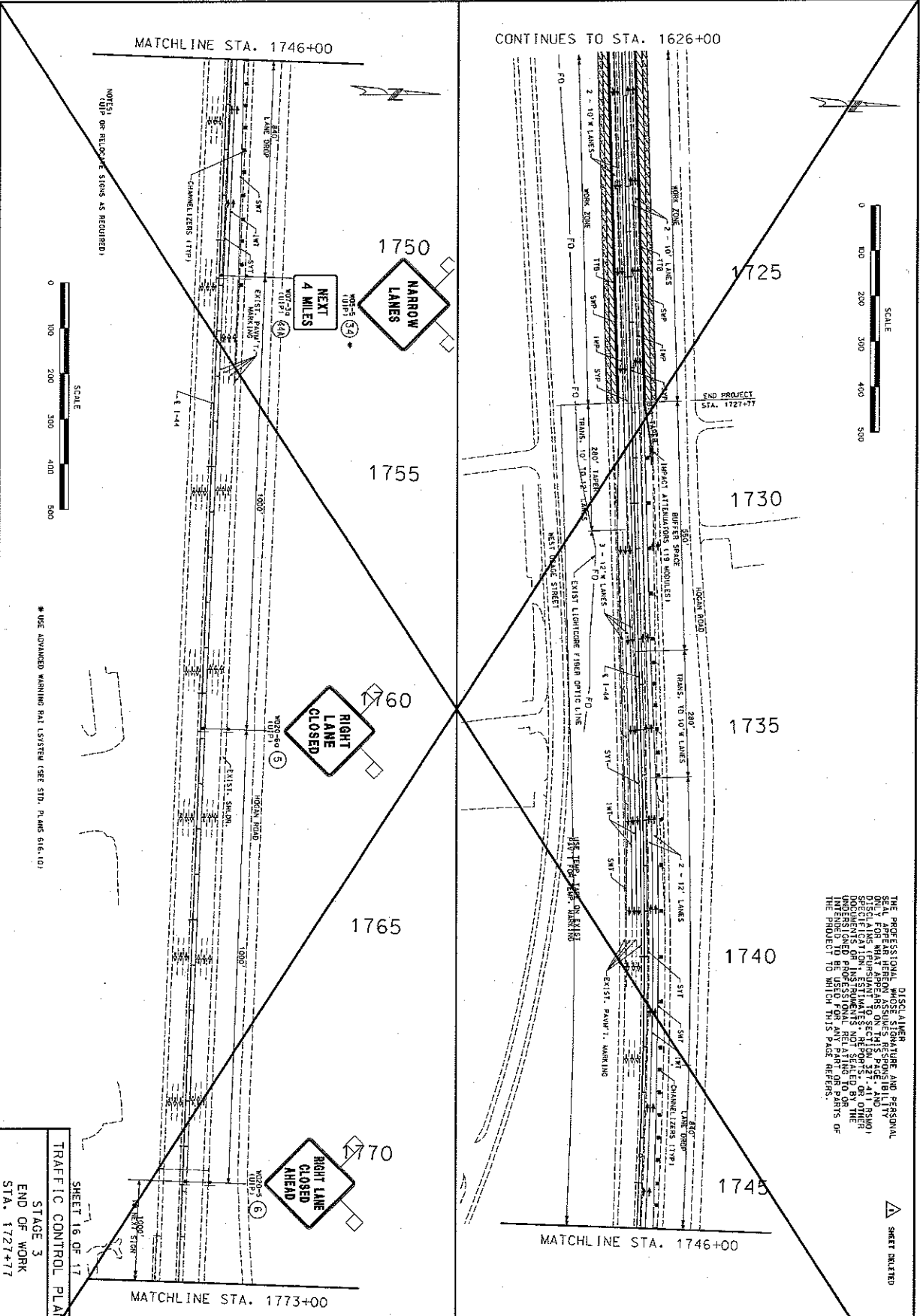
Copyright CMT, Inc.
CMT
 CHANDLER MURPHY & TILLY, INC.
 ONE MEMORIAL DRIVE, SUITE 500
 ST. LOUIS, MO 63102 (314) 436-5500
 ENGINEERING CORPORATION - 000631

MISSOURI HIGHWAYS AND TRANSPORTATION COMMISSION
MoDOT
 105 WEST CAPITOL
 JEFFERSON CITY, MO 65102
 1-888-ASK-MODOT (1-888-275-6636)

DATE	DESCRIPTION

PROJECT NO.	
DRAWING NO.	
DATE	5/21/2009
BY	1-44 MJD
CHECKED	36
COUNTY	FRANKLIN
CONTRACT NO.	J612011





DISCLAIMER: THE PROFESSIONAL ENGINEER'S SEAL, APPEAR HEREON ASSURES RESPONSIBILITY ONLY FOR WHAT APPEARS ON THIS PAGE, AND NOT FOR ANY OTHER INFORMATION, SPECIFICATIONS, ESTIMATES, REPORTS, OR OTHER DOCUMENTS OR INSTRUMENTS NOT SEALED BY THE ENGINEER. THIS PLAN IS NOT TO BE USED FOR ANY PART OR PARTS OF THE PROJECT TO WHICH THIS PAGE REFERS.

REV. 6/5/2009

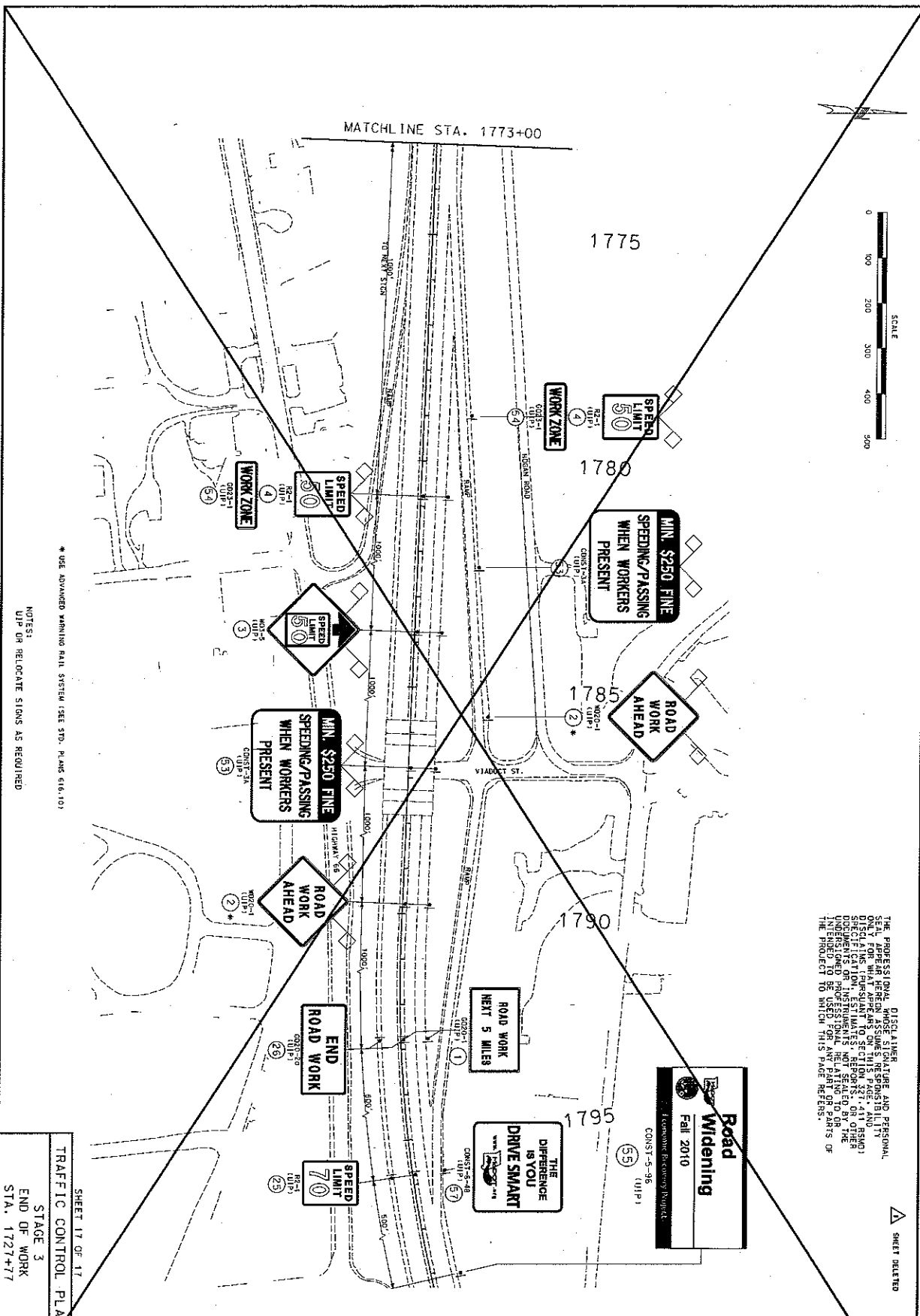
Copyright CMT, Inc.
CMT
 CRAWFORD, MURPHY & TELY, INC.
 800 MEMORIAL DRIVE, SUITE 500
 ST. LOUIS, MO 63102 (314) 436-5500
 ENGINEERING CORPORATION - 000631

MISSOURI HIGHWAYS AND TRANSPORTATION COMMISSION
MoDOT
 105 WEST CAPITOL
 JEFFERSON CITY, MO 65102
 1-888-ASK-MODOT 1-888-275-6261

DATE	DESCRIPTION

PROJECT NO.	1612011
DATE	6/5/2009
ROUTE	I-44 MO
SECTION	0 - 300+00
FRANKLIN	
BRIDGE NO.	





NOTE:
UP OR RELOCATE SIGNS AS REQUIRED

* USE ADVANCED WARNING RAIL SYSTEM (SEE STD. PLANS 616.10)

DISCLAIMER
THE PROFESSIONAL ENGINEER'S SEAL, APPROVAL, AND SIGNATURE ARE REQUIRED FOR THIS PAGE. ONLY WHAT APPEARS ON THIS PAGE, AND THE SHEET LISTING, SHALL BE CONSIDERED. DOCUMENTS OR INSTRUMENTS NOT SEALED BY THE ENGINEER SHALL BE VOID AND NOT PART OF THE PROJECT TO WHICH THIS PAGE REFERS.

SHEET 17 OF 17
TRAFFIC CONTROL PLAN
STAGE 3
END OF WORK
STA. 1727+77

<p>Copyright CMT, Inc. CMT CONRAD MURPHY & TILLY, INC. ONE MEMORIAL DRIVE, SUITE 500 ST. LOUIS, MO 63102 (314) 436-5500 ENGINEERING CORPORATION • 000631</p>	<p>MISSOURI HIGHWAYS AND TRANSPORTATION COMMISSION 105 WEST CAPITOL JEFFERSON CITY, MO 65101 1-888-ASK-MODOT (1-888-275-6636)</p>	DATE	DESCRIPTION
		<p>STATE OF MISSOURI REGISTERED PROFESSIONAL ENGINEER No. 0000000000 Name: [REDACTED] Expiration: [REDACTED]</p>	<p>PROJECT NO. _____ SHEET NO. _____ DATE PREPARED: 8/27/2009 DRAWN BY: [REDACTED] CHECKED BY: [REDACTED] FRANKLIN JUL 2011 CONTRACT NO. _____</p>

REV. _____

