



SEPTA Engineering Change Notice

ECN # 3436

Summary Description of Change: Air Duct Assembly

Affected Fleet(s):

| | | | |
|---------------------|--------|-------------------------------------|-------|
| B IV | N5 | <input checked="" type="checkbox"/> | SL IV |
| LRV DE | PCC II | | SL V |
| LRV SE | ACS-64 | | P-P |
| M4 | | | |
| Wk Car/Loco: | | | |
| Facility/Equipment: | | | |
| Other: | | | |

Effectivity:

| |
|------------------------------|
| Change: All Cars/ Trucks |
| Change Car #'s: |
| Evaluate/Test Only Car Nos.: |
| Documentation only: |

Documents Affected:

| | | | | | |
|-------------------------------------|---------------------|--------------------------|-----|--------------------------|-----|
| <input checked="" type="checkbox"/> | Drawing(s) MI-D-371 | | | | |
| | Specification(s) | | | | |
| <input type="checkbox"/> | IPC | <input type="checkbox"/> | RMM | <input type="checkbox"/> | HRM |
| | Operator's Manual | | | | |
| | Schematics | | | | |
| | Other | | | | |
| | None | | | | |

Description of change:
Original Air Duct assembly gave option to construct from stainless steel or fiberglass. Revised drawing now allows fiberglass only.

Reason for change:
Shop request to ease installation.

System Safety Class (1 or 2): 2

VMIS Job Code:

Priority: High Med Low Doc Only

Attachments:
MI-D-371 Rev C.

Special Instructions:

New Stock Request: YES NO

Distribute to:
Silverliner ECN Master Copy
Ed Murphy G. Fisher Ron Mikulski Aldo Carpenetti

Originator: [Redacted] **Date approved:** 01/15/1998

Engineering Manager: [Redacted] **Date approved:** 01/15/1998

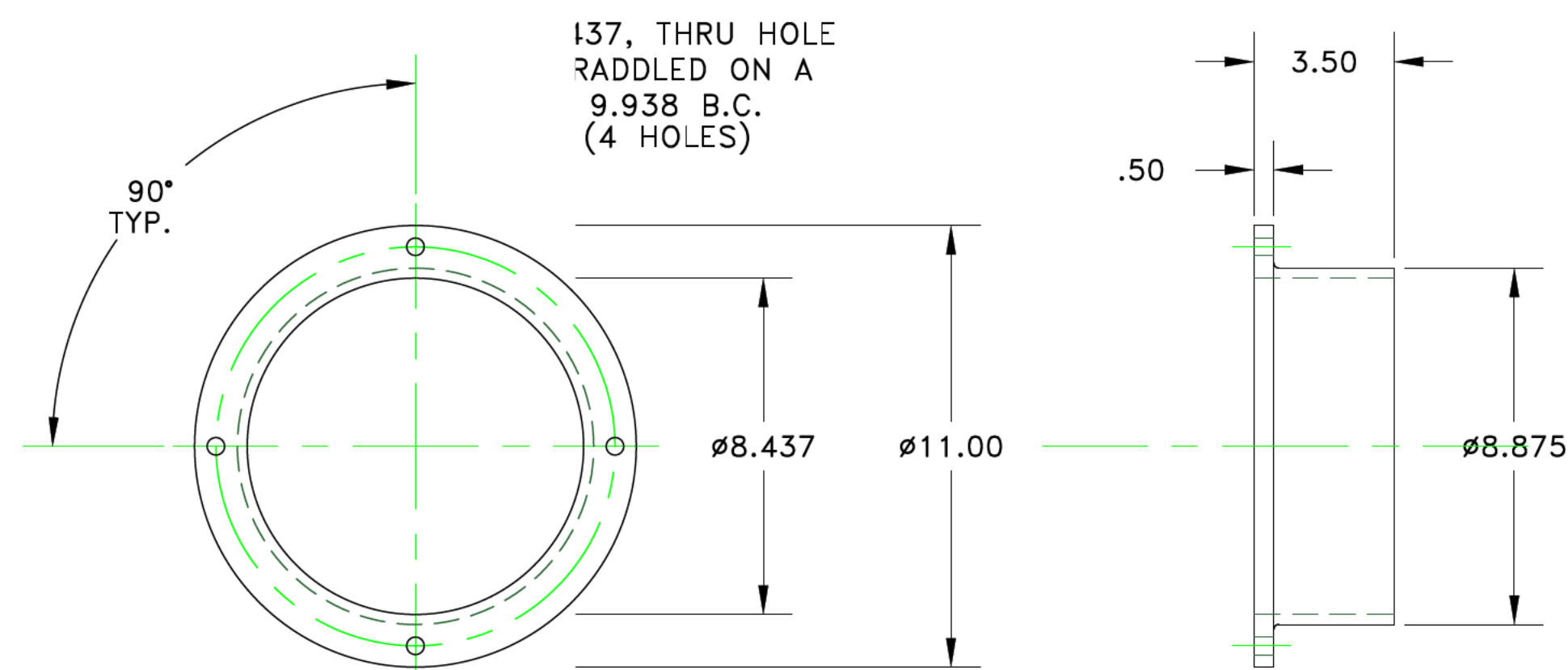
| REVISIONS | REV. NO.: | REVISION ORIGINATOR: | ENGINEERING MANAGER APPROVAL: | DATE APPROVED: |
|-----------|-----------|----------------------|-------------------------------|----------------|
| | Rev. 1 | | | |
| | Rev. 2 | | | |
| | Rev. 3 | | | |
| | Rev. 4 | | | |
| | Rev. 5 | | | |

Change Details:

Revised drawing, to show the installation of a round fiberglass air flow tube.

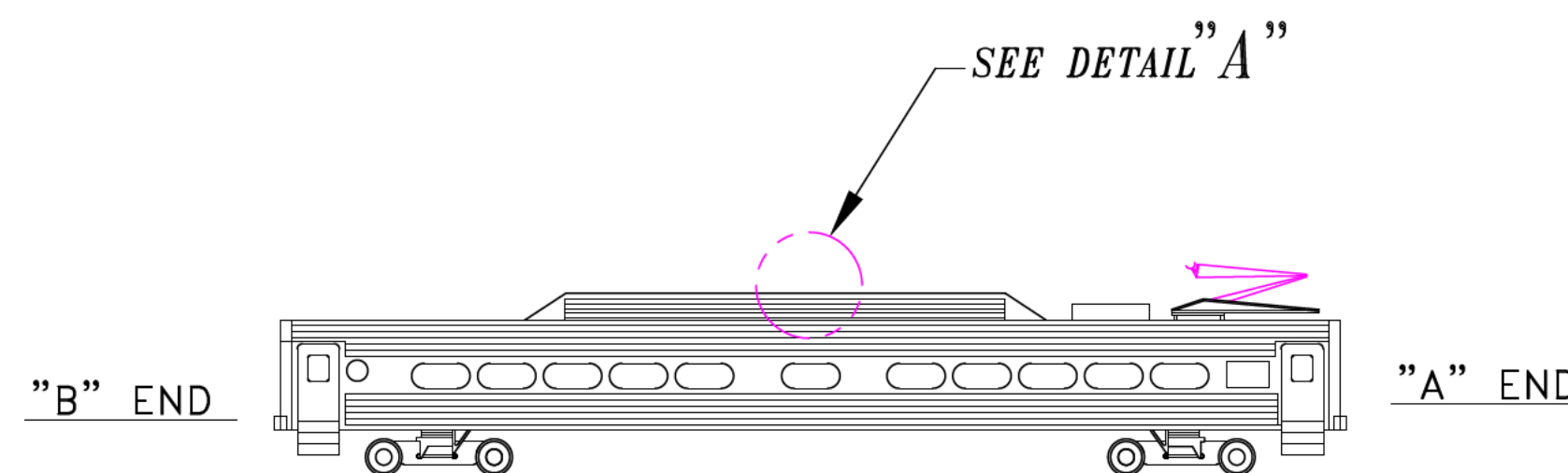
REVISION LOG

| REV | DATE | DESCRIPTION | BY | CK'D | AP'D |
|-----|------------|---|------|----------|------|
| A | 1 AUG '96 | ADDED MATERIAL OPTION (FIBERGLASS) TO ITEMS 1 & 2 | E.E. | W.K.R.M. | |
| B | 23 DEC '97 | CHANGED MATERIAL SPEC. "FIBERGLASS" PER SHOP REQUEST | E.E. | W.K.R.M. | |
| C | 6 JAN '98 | REDESIGNED DUCT VENT ASSY FROM RECTANGULAR TO ROUND SHAPE. PER ECN 3436 | E.E. | W.K.R.M. | |



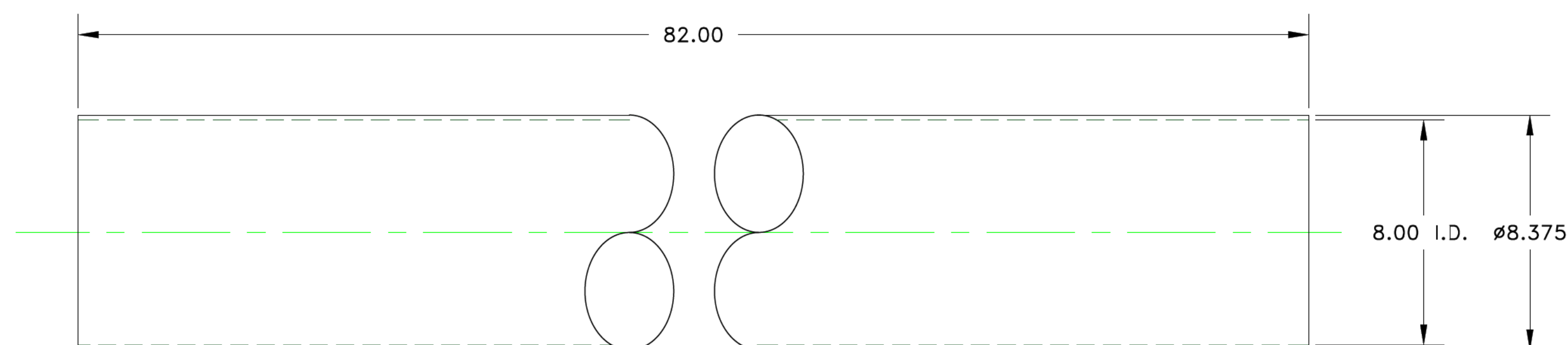
② MTG FLANGE

SCALE: 2 : 1



INSTALLATION PROCEDURE

- STEP 1. SCRIBE 9.00 CIRCLE ON AUX ROOF BULKHEAD. USE LOCATING DIM'S SHOWN IN END VIEWS DETAIL "A".
- STEP 2. CHECK LOCATION OF CUTOUTS TO ASSURE PROPER HOLE ALIGNMENT. THEN CUT BULKHEAD.
- STEP 3. INSTALL MTG FLANGE L.H. (ITEM 2) FIRST. USING PRE-DRILLED HOLES IN FLANGED AREA AS A TEMPLATE. FASTEN FLANGED PORTION TO BULKHEAD USING HARDWARE (ITEM 4 & 5) THEN SLIP FIT END OF DUCT TUBING (ITEM 1) INTO MTG FLANGE AND APPLY SILICONE BEAD ALL AROUND SEAM AS SHOWN.
- STEP 4. INSTALL MTG FLANGE R.H. (ITEM 2) SECOND, FOLLOW THE SAME PRECEDURE AS CALLED OUT IN STEP 3.

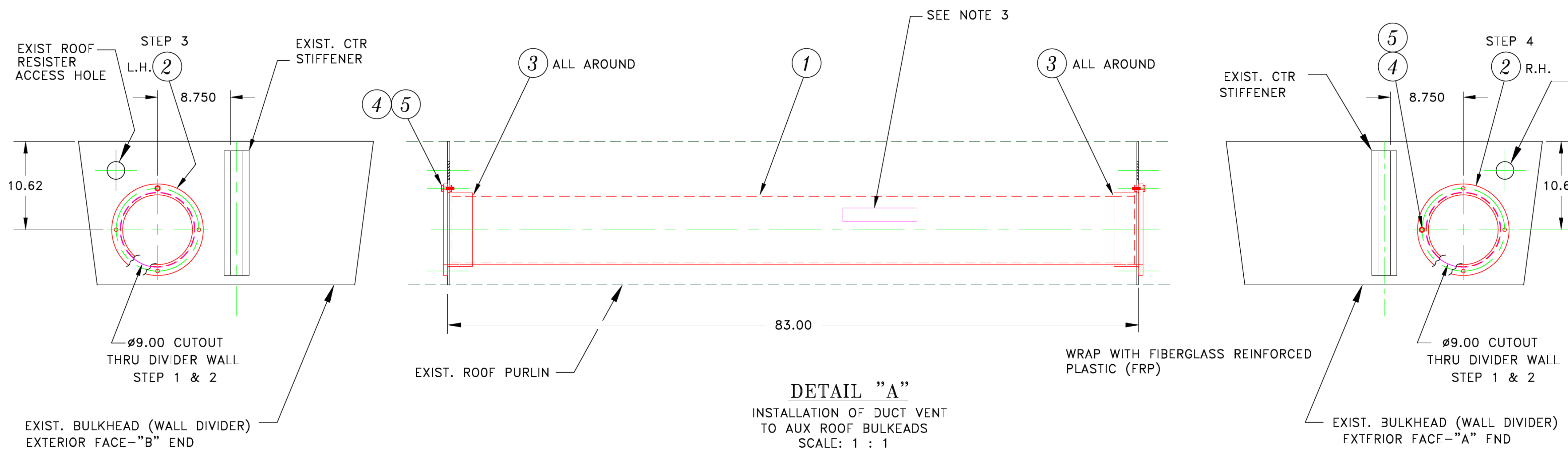


① DUCT TUBING

SCALE: 2 : 1

NOTES

1. MATERIAL: SEE BILL OF MATERIAL
2. BREAK ALL SHARP EDGES
3. IDENTIFICATION: AT THIS LOCATION, PERMANENTLY MARK MFR'S NAME OR LOGO AND DATE OF MANUFACTURE.
4. PACKAGING: SHIP NO MORE THAN REQUESTED BY SEPTA PURCHASE ORDER, IN A SUITABLE SHIPPING CONTAINER, WITH IDENTIFICATION ON PACKAGE EXTERIOR AS PER DWG. TITLE BLOCK, INCLUDING MFR'S NAME AND DATE MFR.
5. INSPECTION: TWO (2) PRE-PRODUCTION PROTOYPES (ITEM 1 & 2) ARE TO BE SHIPPED TO THE ADDRESS CALLED OUT ON THE PURCHASE ORDER. PACKAGE IS TO BE MARKED PRE-PRODUCTION SAMPLES, ATTENTION "Q.A." DEPARTMENT. SUPPLIER MUST RECEIVE PROTOTYPE APPROVAL BEFORE STARTING PRODUCTION.



DETAIL "A"
INSTALLATION OF DUCT VENT
TO AUX ROOF BULKHEADS
SCALE: 1 : 1

| ITEM | DESCRIPTION | SPECIFICATIONS | QTY |
|------|--------------|--|-----|
| 5 | LOCKNUT | 3/8-UNC-2B, STL, ZINC PLATED | 8 |
| 4 | HEX HEAD SCR | 3/8-16 UNC-2A X 1.50 LG, STL, ZINC PLATED SEPTA C. & L. NO. 40-3126 | 8 |
| 3 | ADHESIVE | 3M, NON STRUC. FASTBOND ADHESIVE PN 1099 OR SEPTA ENG. APVD EQUAL | AR |
| 2 | MTG FLANGE | FIBERGLASS REINFORCED PLASTIC (FRP) PER SEPTA SPEC NO. S-2842 | 2 |
| 1 | DUCT, TUBING | | 1 |

| | | | |
|--|---------------------------------------|------------|------------|
| STANDARDS MANAGER | PROJECT ENGR | DATE | APR 29 '96 |
| ALL DIMENSIONS ARE: INCHES <input checked="" type="checkbox"/> MILLIMETERS <input type="checkbox"/> OTHER | TOLERANCES UNLESS OTHERWISE SPECIFIED | QUALITY | MATERIALS |
| FRACTIONAL ± 1/64 | .XX ± .01 | CHECKED BY | APR 29 '96 |
| .XXX ± .005 | ANGULAR ± 1/2° | DRAWN BY | SEP 27 '95 |
| NEXT ASSEMBLY | SCALE | DWG NO. | MI-D-371 |
| | NOTED | SPEC. NO. | S- |
| | | SHEET NO. | 1 OF 1 |

Southeastern Pennsylvania Transportation Authority
INTEGRATED LOGISTIC SUPPORT DEPARTMENT
TITLE
SILVERLINER IV (CARS)
AUX. ROOF
FAB. & INSTALL.
DUCT VENT.

SEPTA C. & L. NO. 54-02292-R02
DO NOT SCALE THIS DRAWING

REV. C
SCALE NOTED
SPEC. NO. S-
SHEET NO. 1 OF 1