

These culvert history review notes were provided to NTSB by CPKC CDuffy.

Culvert History Review

Call to discuss surface related issue at MP 343.42 on May 27, 2023

Jay Bonebrake (Manager Structures)
Walter Springstead (Structures)
Dan Voller (Structures)
Kenny Ballhagen (RM)
Jamie Stark
Charlie Duffy

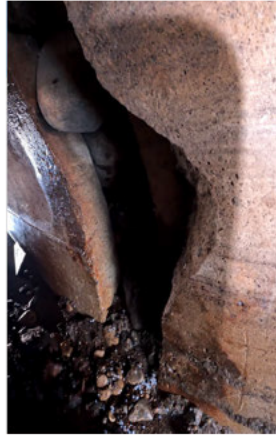
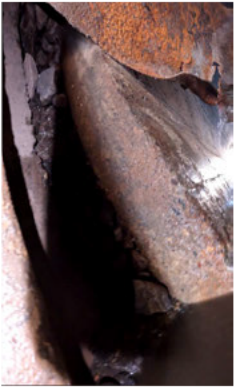


May 17, 2023 –

- Train crew reported rough track at the location and a Track Inspector was immediately dispatched to inspect.
- Inspector found 3" of crosslevel at the location with low side being to the north.
- Surfacing crew was near by and was sent to the location along with a load of rock that was dumped ahead of them.
- When crew began to surface, the track grade fell out over about a five-tie stretch over the width of the track with the deeper area being under the center to the north.
- Structures Manager was notified and dispatched crew from Minot.
- Track was removed from service and repairs were made to the roadbed.
 - o 34 bags of quickcrete were placed in the hole with water being periodically applied to them as they were placed.
 - o Ballast was placed to bring track surface back to standard and area was fully surfaced.
- Structures inspector conducted a visual inspection from outside the culvert and confirmed an area that was approximately ½ full of debris/rock and he identified one area of separation.
 - o Some confusion as to which pipe was believed to have the separation and debris, the inspector stated the east pipe but RM and Structures Mgr. stated the west.
- Inspector stated he reported findings to Manager Bonebrake.
- Culverts were again inspected on September 9, 2023 no change according to the inspector.
- Culverts were again inspected on June 5, 2024, no change according to the inspector. Higher water level was reported during this inspection.
- No further surface issues have been reported since May 17, 2023 when area was surfaced.

Internal Culvert Inspection July 18, 2024

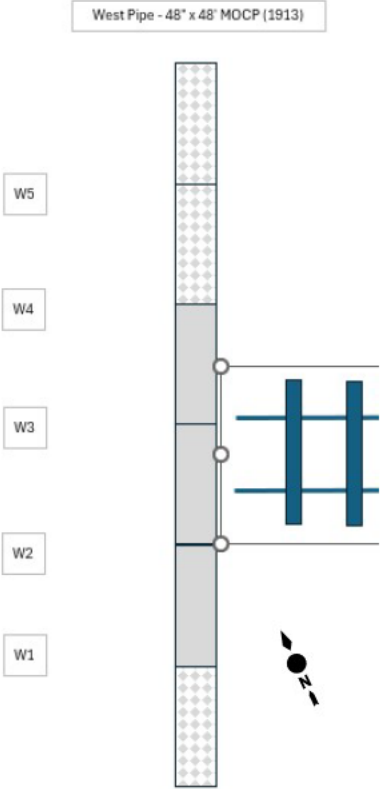
West Pipe



W3 Joint Location – West Pipe

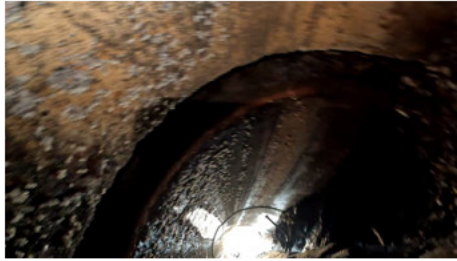


W2 Joint Location – West Pipe



Internal Culvert Inspection July 18, 2024

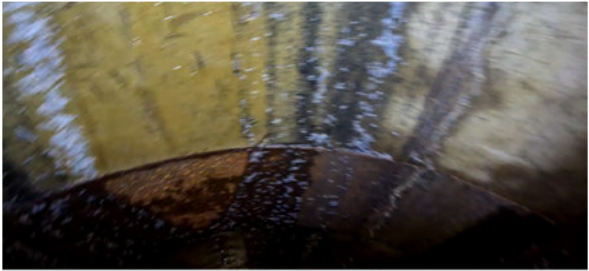
East Pipe



E3 Joint Location – East Pipe



E1 Joint Location – East Pipe



E2 Joint Location – East Pipe
(band in place)

