



FACTUAL REPORT OF INVESTIGATION
FACTUAL REPORT ATTACHMENT

ATTACHMENT: Highway Plans – Cross Section

Woodlawn, MD

HWY23FH010

(8 pages)


I-695 FROM I-70 TO MD 43 TRANSPORTATION SYSTEMS MANAGEMENT AND OPERATIONS (TSMO) SUBMITTAL 022 – AREA 1B

ROADWAY CROSS SECTIONS


JULY 2022

COVER SHEET
I-695
RAMP 122

SHEET 1
SHEETS 2 – 498
SHEETS 499 – 514

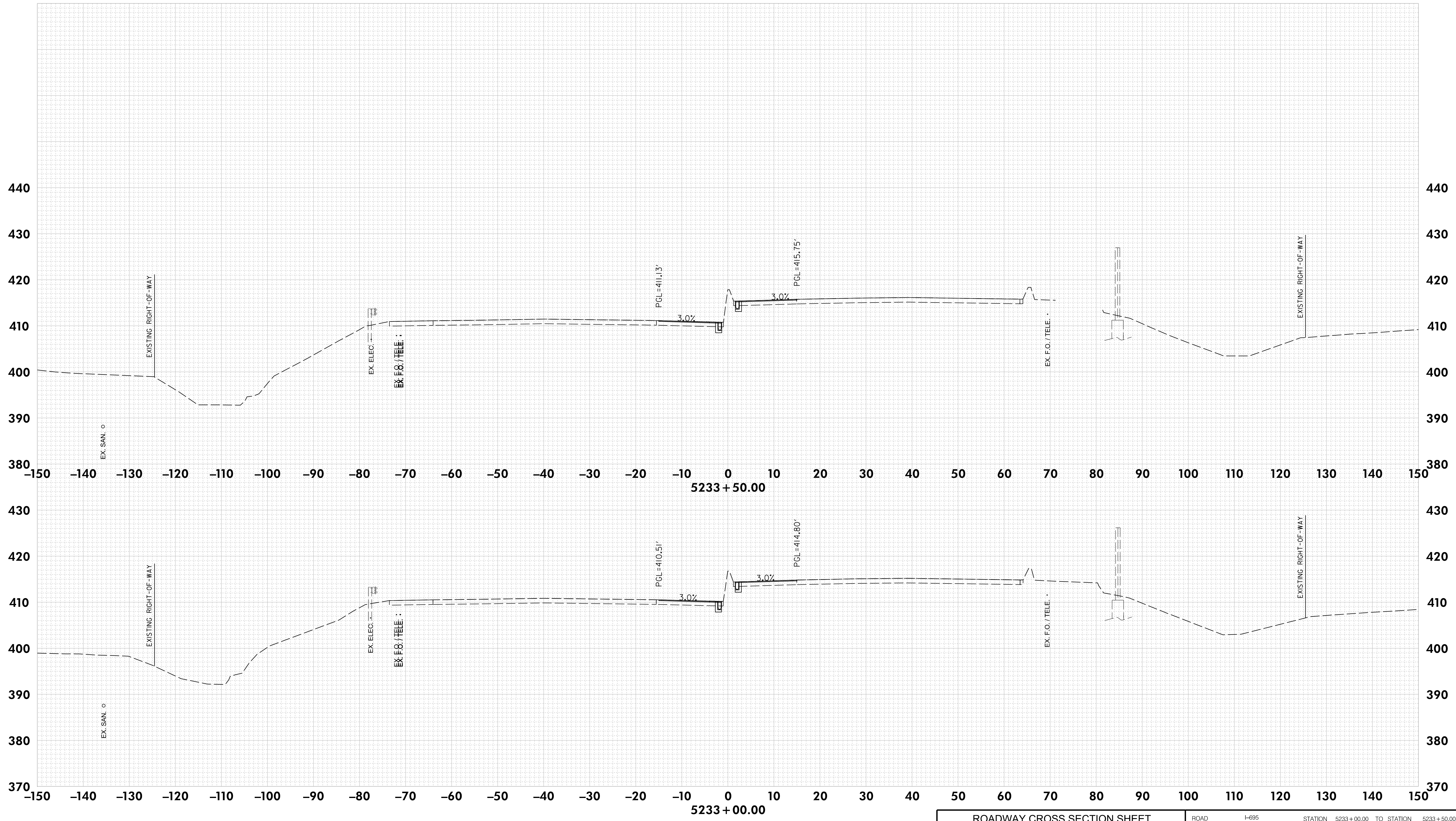


P: 410.728.2900
700 East Pratt Street, Suite 500 | Baltimore, MD 21202
Engineers | Construction Managers | Planners | Scientists
www.rkk.com
Responsive People | Creative Solutions

ROADWAY CROSS SECTION SHEET			
 MARYLAND DEPARTMENT OF TRANSPORTATION STATE HIGHWAY ADMINISTRATION	HIGHWAY DESIGN DIVISION	DESIGNED BY	CRKAFMEG
	I-695 FROM I-70 TO MD 43 TRANSPORTATION SYSTEMS MANAGEMENT AND OPERATIONS (TSMO) AREA 1B SUBMITTAL 022	COUNTY	BALTIMORE
		DRAWN BY	CRKAFMEG
		CHECKED BY	AKL
		MDE/PRD	20-PR-0038
		DRAWING NO.	XS-1 OF 514
		SHEET NO.	1 OF 514

DRILL HOLES

BY: BIG

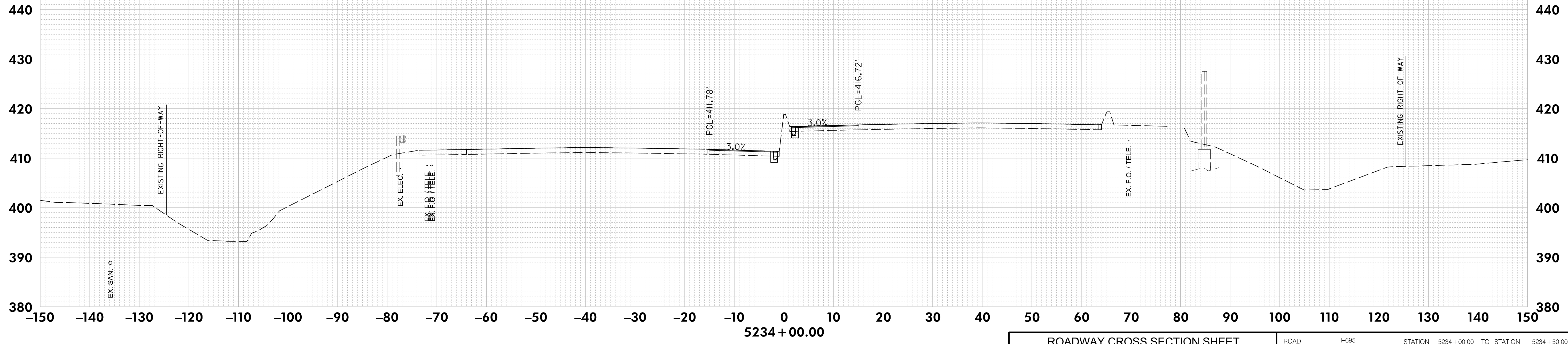
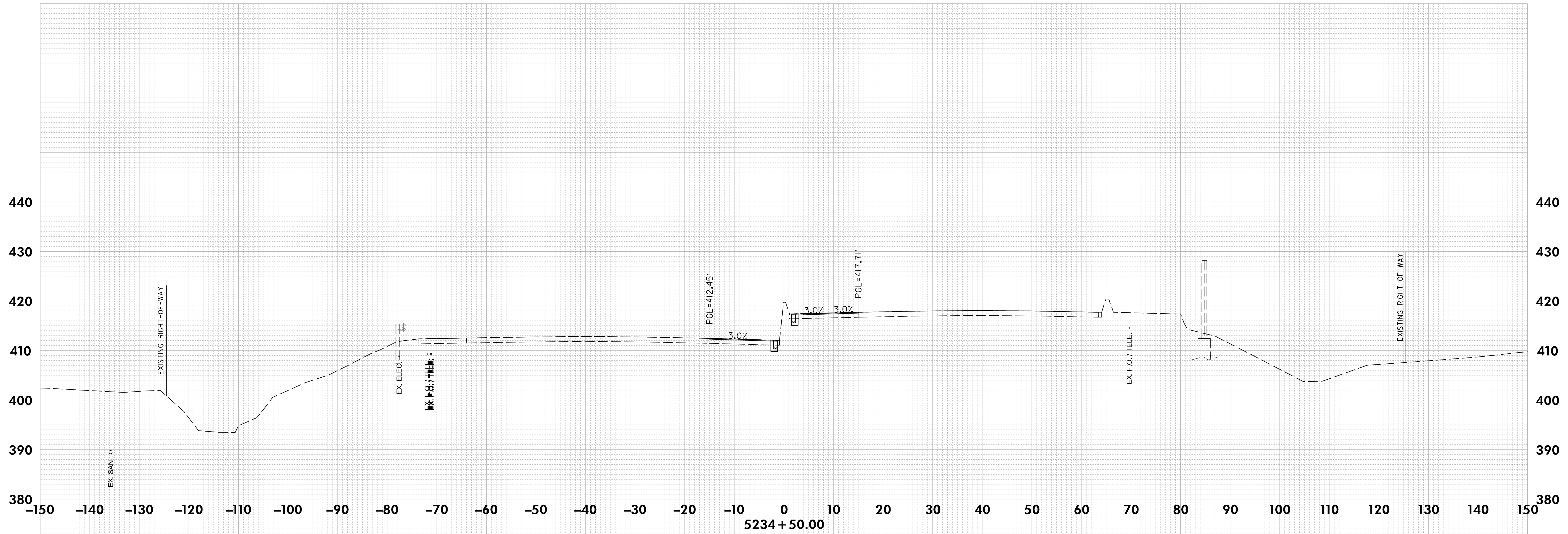


RK&K
 P: 410.728.2900
 700 East Pratt Street, Suite 500 | Baltimore, MD 21202
 Engineers | Construction Managers | Planners | Scientists
 www.rkk.com
 Responsive People | Creative Solutions

ALL ELEVATIONS ARE IN FEET AND ARE BASED ON THE NAVD 88 & NAD 83/2011.

ROADWAY CROSS SECTION SHEET		ROAD I-695 STATION 5233+00.00 TO STATION 5233+50.00	
 MARYLAND DEPARTMENT OF TRANSPORTATION STATE HIGHWAY ADMINISTRATION	HIGHWAY DESIGN DIVISION	DESIGNED BY	CMKAFMEG
	I-695 FROM I-70 TO MD 43	DRAWN BY	CMKAFMEG
	TRANSPORTATION SYSTEMS MANAGEMENT AND OPERATIONS (TSMO) AREA 1B	CHECKED BY	AKL
	SUBMITTAL 022	MDE/PRD	20-PR-0038
		COUNTY	BALTIMORE
		CONTRACT NO.	BA0065172
		HORIZONTAL SCALE	1" = 10'
		VERTICAL SCALE	1" = 10'
DRAWING NO.	XS - 70	OF	514
		SHEET NO.	70 OF 514

REF - 10-14-2022

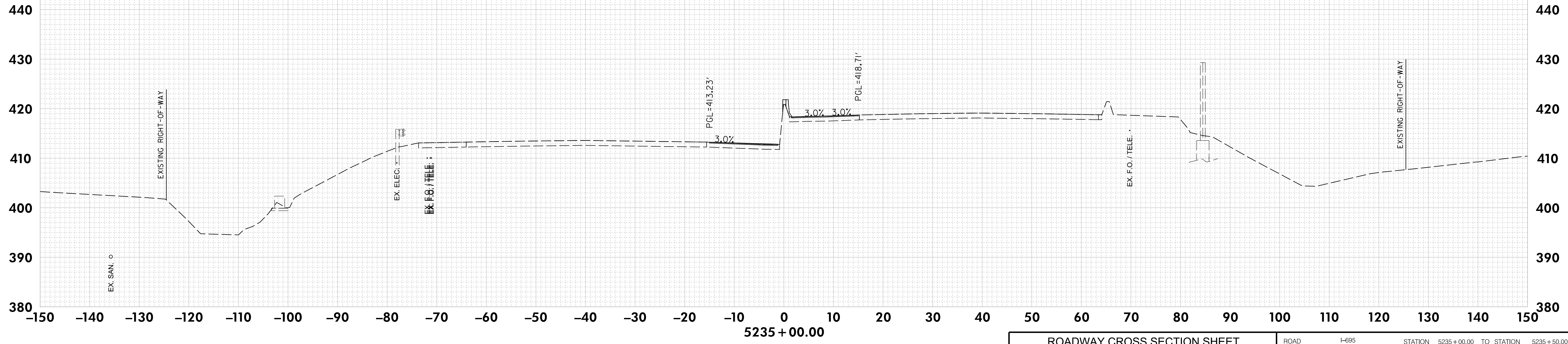
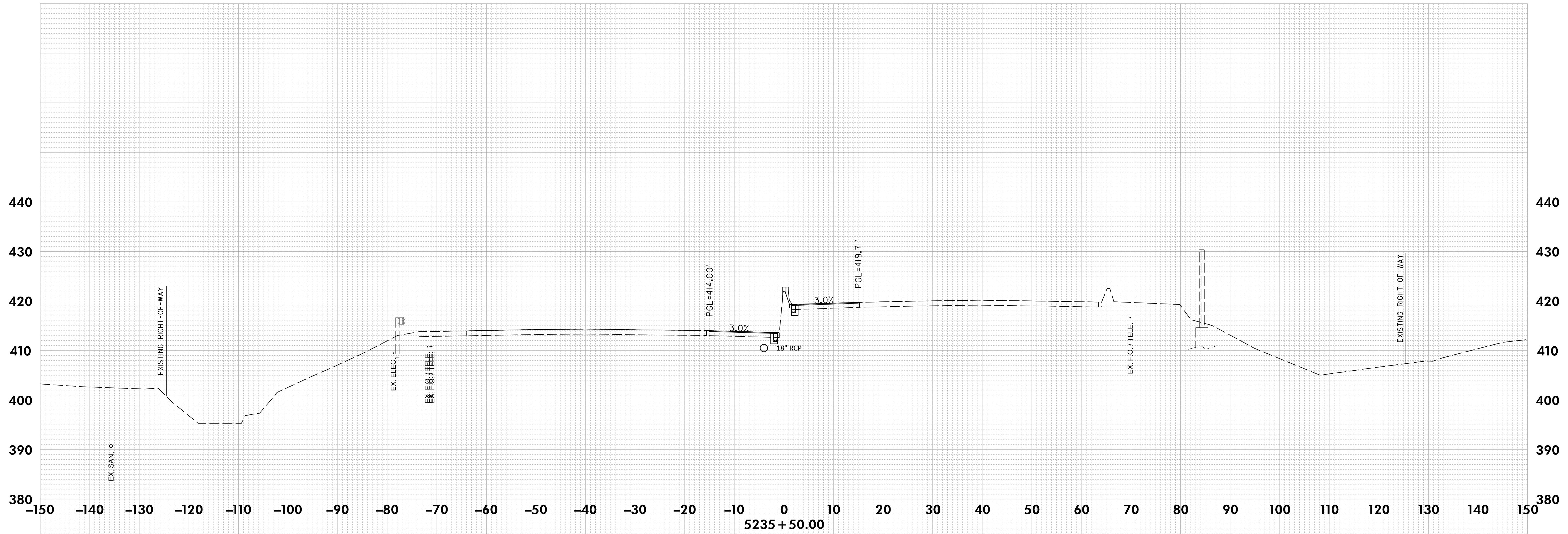


RK&K
 P: 410.728.2900
 700 East Pratt Street, Suite 500 | Baltimore, MD 21202
 Engineers | Construction Managers | Planners | Scientists
 www.rkk.com
 Responsive People | Creative Solutions

ALL ELEVATIONS ARE IN FEET AND ARE BASED ON THE NAVD 88 & NAD 83/2011.

ROADWAY CROSS SECTION SHEET		ROAD <u>I-695</u> STATION <u>5234+00.00</u> TO STATION <u>5234+50.00</u>
 MARYLAND DEPARTMENT OF TRANSPORTATION STATE HIGHWAY ADMINISTRATION	HIGHWAY DESIGN DIVISION	DESIGNED BY <u>CMKAFMEG</u> COUNTY <u>BALTIMORE</u>
	I-695 FROM I-70 TO MD 43	DRAWN BY <u>CMKAFMEG</u> CONTRACT NO. <u>BA0065172</u>
	TRANSPORTATION SYSTEMS	CHECKED BY <u>AKL</u> HORIZONTAL SCALE <u>1" = 10'</u>
	MANAGEMENT AND OPERATIONS (TSMO) AREA 1B	MDE/PRD <u>20-PR-0038</u> VERTICAL SCALE <u>1" = 10'</u>
SUBMITTAL 022		DRAWING NO. <u>XS - 71</u> OF <u>514</u> SHEET NO. <u>71</u> OF <u>514</u>

RFC - 10-14-2022

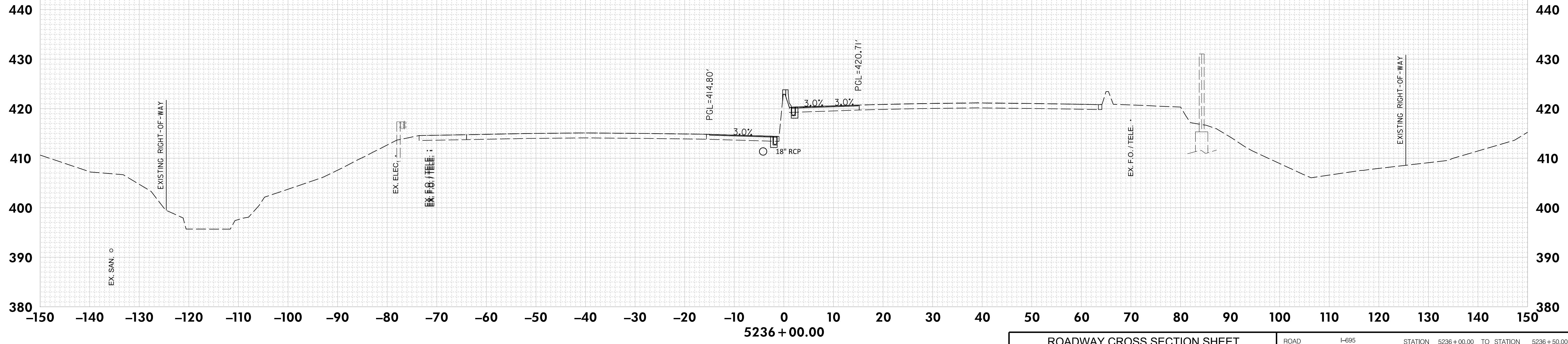
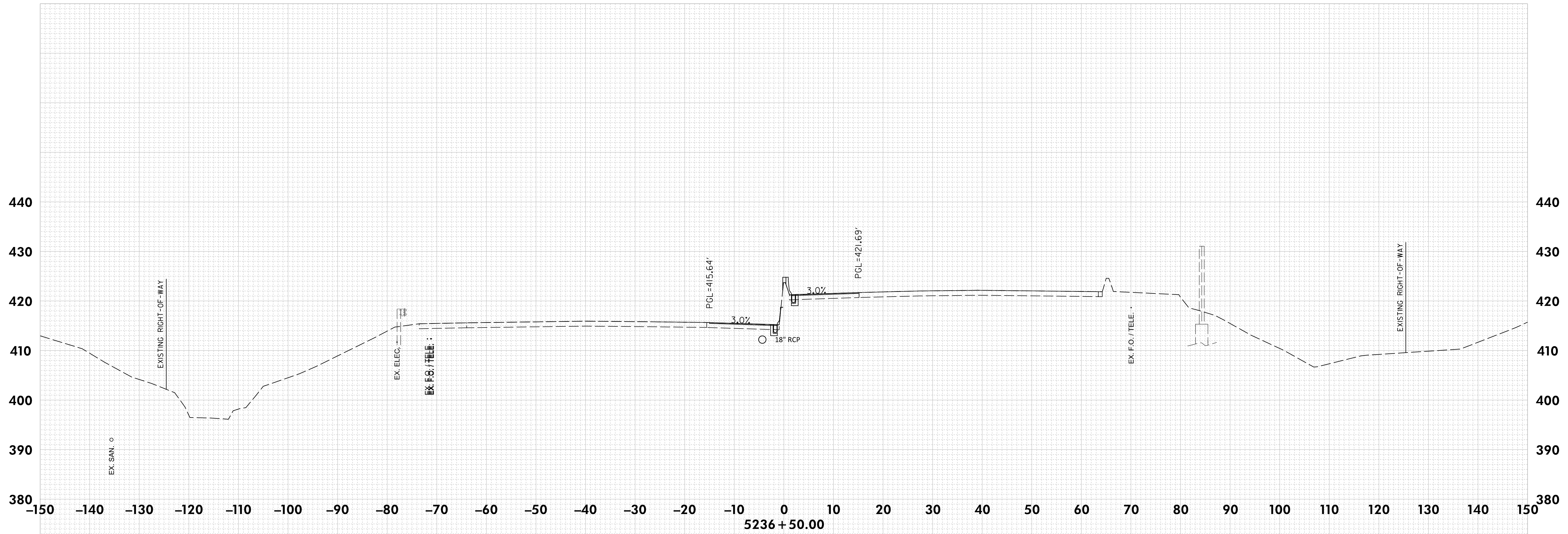


RK&K
 P: 410.728.2900
 700 East Pratt Street, Suite 500 | Baltimore, MD 21202
 Engineers | Construction Managers | Planners | Scientists
 www.rkk.com
 Responsive People | Creative Solutions

ALL ELEVATIONS ARE IN FEET AND ARE BASED ON THE NAVD 88 & NAD 83/2011.

ROADWAY CROSS SECTION SHEET		ROAD I-695 STATION 5235+00.00 TO STATION 5235+50.00	
 MARYLAND DEPARTMENT OF TRANSPORTATION STATE HIGHWAY ADMINISTRATION	HIGHWAY DESIGN DIVISION	DESIGNED BY	CMKAFMEG
	I-695 FROM I-70 TO MD 43	DRAWN BY	CMKAFMEG
	TRANSPORTATION SYSTEMS	CHECKED BY	AKL
	MANAGEMENT AND OPERATIONS (TSMO) AREA 1B	MDE/PRD	20-PR-0038
SUBMITTAL 022		COUNTY	BALTIMORE
		CONTRACT NO.	BA0065172
		HORIZONTAL SCALE	1" = 10'
		VERTICAL SCALE	1" = 10'
		DRAWING NO.	XS - 72 OF 514
		SHEET NO.	72 OF 514

REF - 10-14-2022

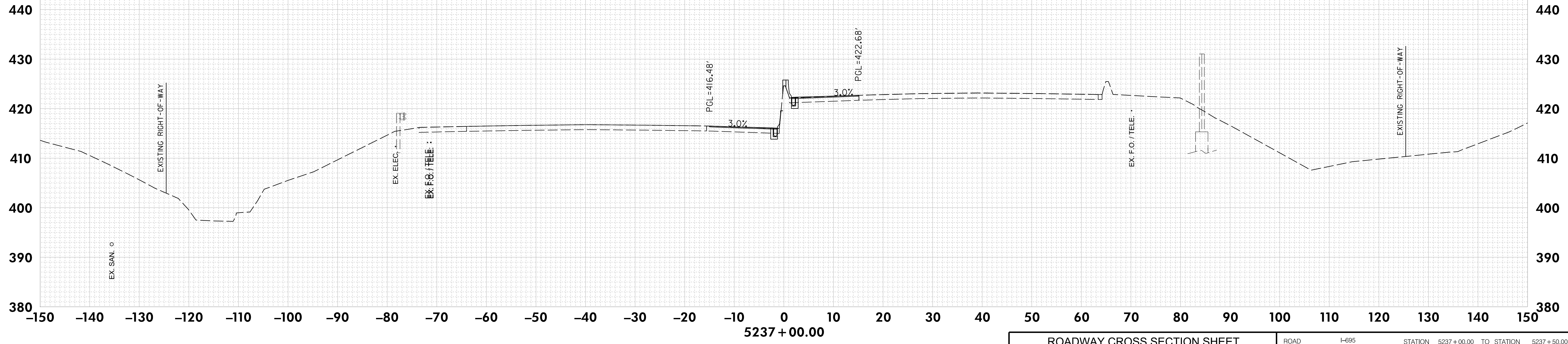
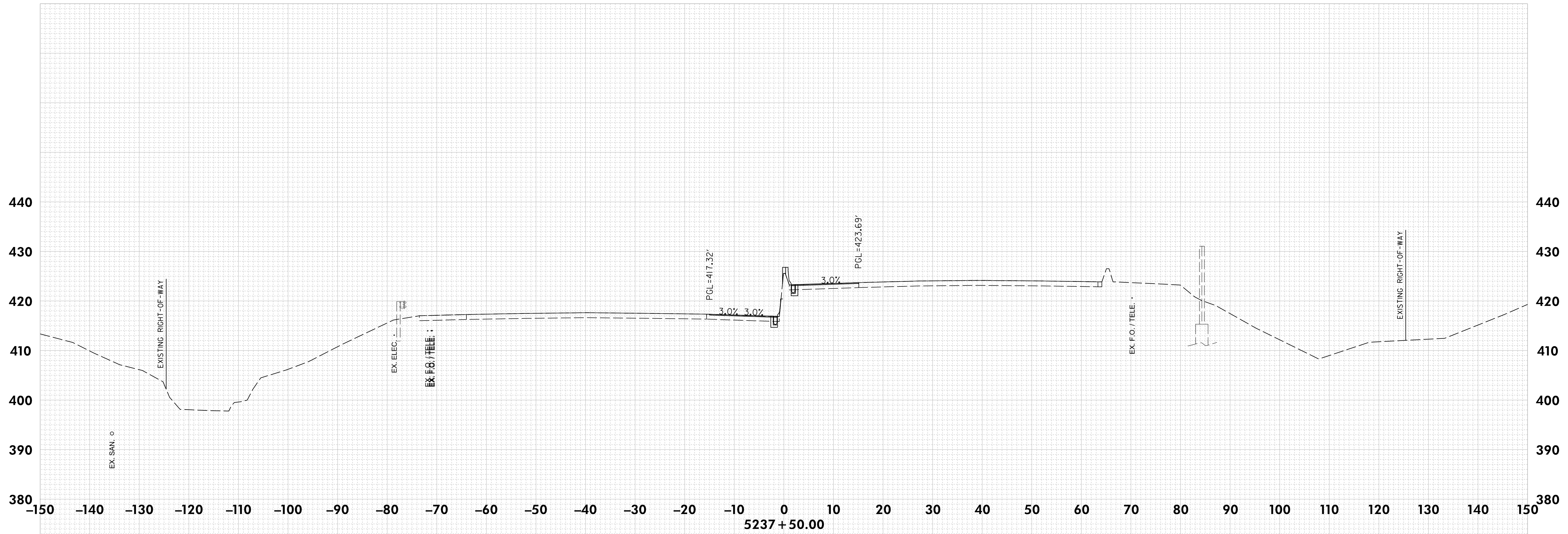


RK&K
 P: 410.728.2900
 700 East Pratt Street, Suite 500 | Baltimore, MD 21202
 Engineers | Construction Managers | Planners | Scientists
 www.rkk.com
 Responsive People | Creative Solutions

ALL ELEVATIONS ARE IN FEET AND ARE BASED ON THE NAVD 88 & NAD 83/2011.

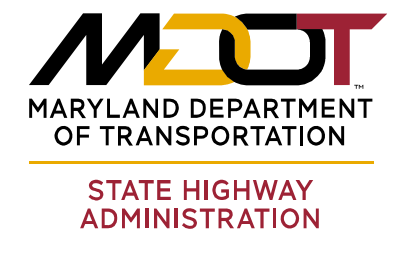
ROADWAY CROSS SECTION SHEET		ROAD I-695 STATION 5236+00.00 TO STATION 5236+50.00	
<p>MDOT MARYLAND DEPARTMENT OF TRANSPORTATION STATE HIGHWAY ADMINISTRATION</p>	HIGHWAY DESIGN DIVISION		COUNTY BALTIMORE
	I-695 FROM I-70 TO MD 43		CONTRACT NO. BA0065172
	TRANSPORTATION SYSTEMS		HORIZONTAL SCALE 1" = 10'
	MANAGEMENT AND OPERATIONS (TSMO) AREA 1B		VERTICAL SCALE 1" = 10'
SUBMITTAL 022		DRAWING NO. XS-73 OF 514	SHEET NO. 73 OF 514

REF - 10-14-2022

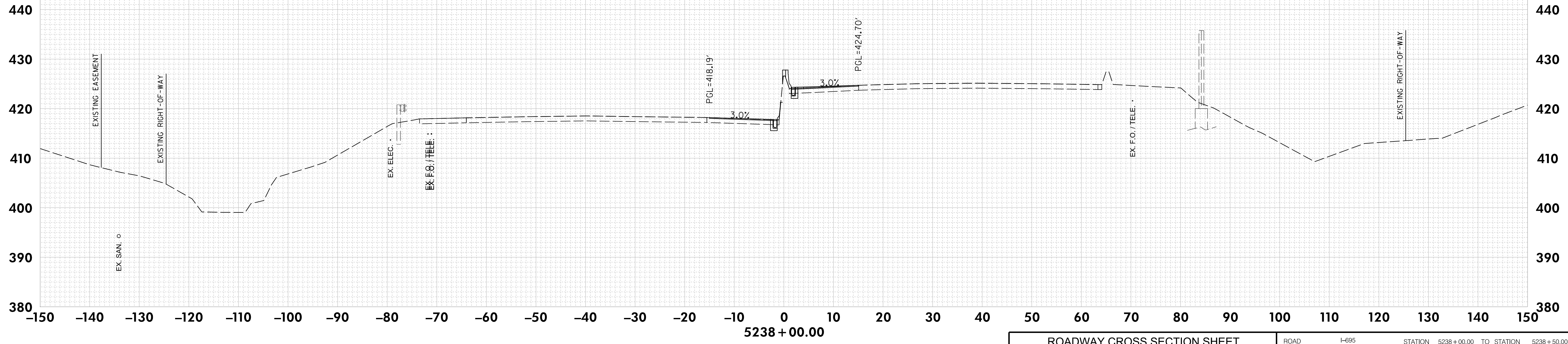
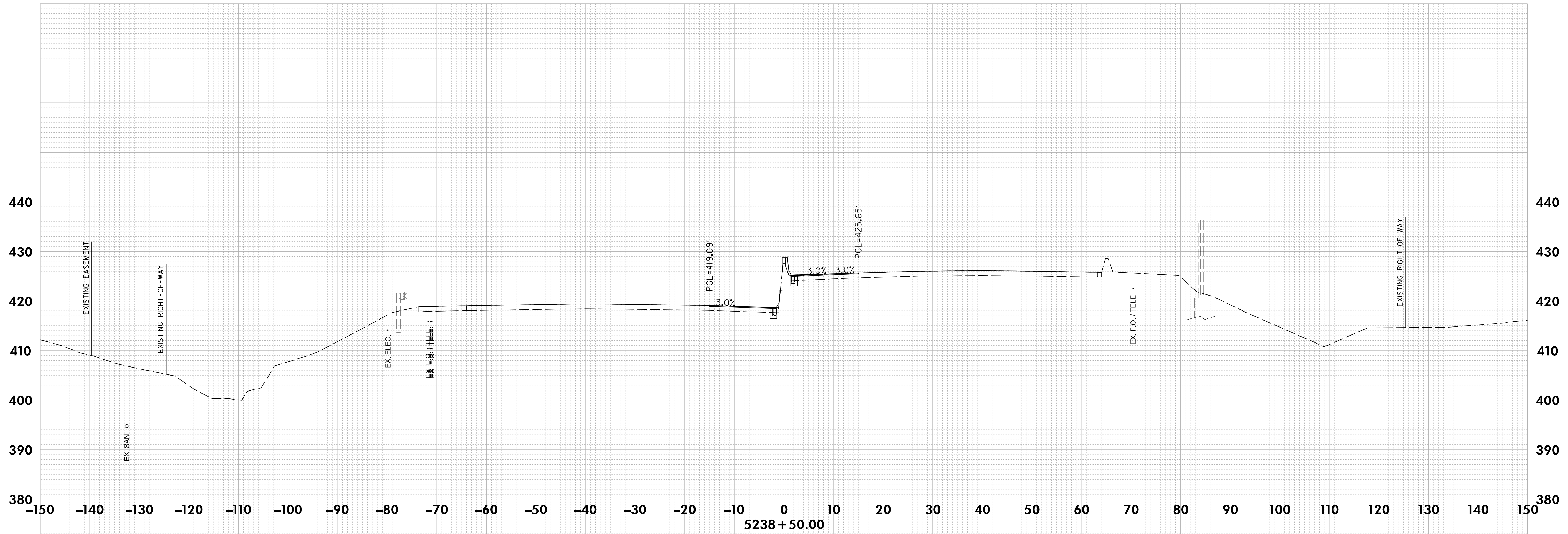


RK&K
 P: 410.728.2900
 700 East Pratt Street, Suite 500 | Baltimore, MD 21202
 Engineers | Construction Managers | Planners | Scientists
 www.rkk.com
 Responsive People | Creative Solutions

ALL ELEVATIONS ARE IN FEET AND ARE BASED ON THE NAVD 88 & NAD 83/2011.

ROADWAY CROSS SECTION SHEET		ROAD	STATION	TO STATION				
 MARYLAND DEPARTMENT OF TRANSPORTATION STATE HIGHWAY ADMINISTRATION	HIGHWAY DESIGN DIVISION	I-695	5237+00.00	5237+50.00				
	I-695 FROM I-70 TO MD 43	DESIGNED BY	CMKAFMEG	COUNTY	BALTIMORE			
	TRANSPORTATION SYSTEMS	DRAWN BY	CMKAFMEG	CONTRACT NO.	BA0065172			
	MANAGEMENT AND OPERATIONS (TSMO) AREA 1B	CHECKED BY	AKL	HORIZONTAL SCALE	1" = 10'			
SUBMITTAL 022	MDE/PRD	20-PR-0038	VERTICAL SCALE	1" = 10'				
DRAWING NO.		XS - 74	OF	514	SHEET NO.	74	OF	514

REF - 10-14-2022



RK&K
 P: 410.728.2900
 700 East Pratt Street, Suite 500 | Baltimore, MD 21202
 Engineers | Construction Managers | Planners | Scientists
 www.rkk.com
 Responsive People | Creative Solutions

ALL ELEVATIONS ARE IN FEET AND ARE BASED ON THE NAVD 88 & NAD 83/2011.

ROADWAY CROSS SECTION SHEET		ROAD <u>I-695</u> STATION <u>5238+00.00</u> TO STATION <u>5238+50.00</u>
 MARYLAND DEPARTMENT OF TRANSPORTATION STATE HIGHWAY ADMINISTRATION	HIGHWAY DESIGN DIVISION	DESIGNED BY <u>CMKAFMEG</u> COUNTY <u>BALTIMORE</u>
	I-695 FROM I-70 TO MD 43	DRAWN BY <u>CMKAFMEG</u> CONTRACT NO. <u>BA0065172</u>
	TRANSPORTATION SYSTEMS	CHECKED BY <u>AKL</u> HORIZONTAL SCALE <u>1" = 10'</u>
	MANAGEMENT AND OPERATIONS (TSMO) AREA 1B	MDE/PRD <u>20-PR-0038</u> VERTICAL SCALE <u>1" = 10'</u>
SUBMITTAL 022		DRAWING NO. <u>XS-75</u> OF <u>514</u> SHEET NO. <u>75</u> OF <u>514</u>

RFC - 10-14-2022