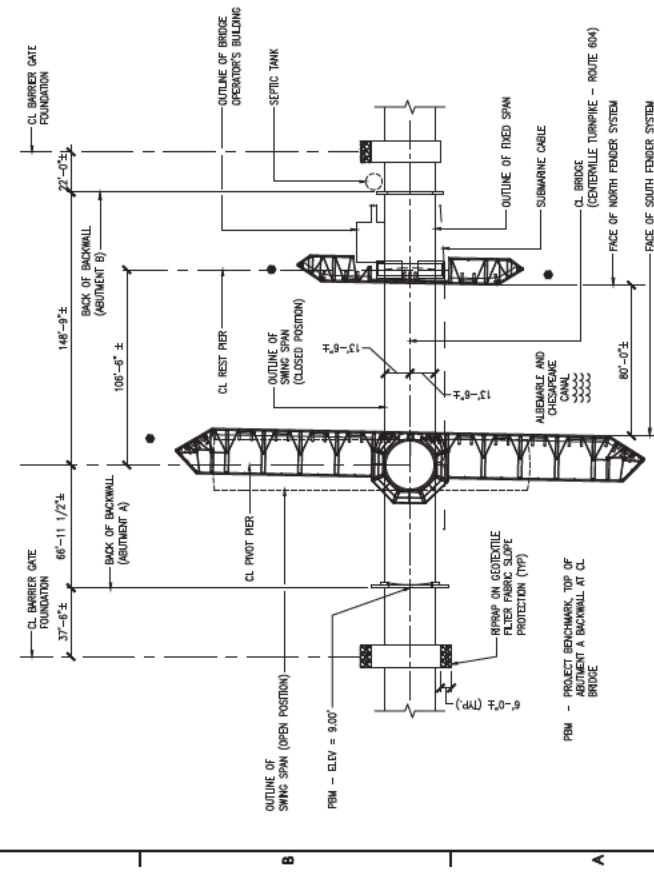


STRUCTURAL SCOPE OF WORK

- GENERAL SUPERSTRUCTURE REPAIRS
- FURNISH AND APPLY EPOXY OVERLAY - EPOXY RESIN (TYPE EP-7) ON TOP SURFACE OF EXISTING AND NEW REINFORCED CONCRETE ON SPAN AND REST PIERS AND IN FIXED SPAN AND ON TOPS OF EXISTING ABUTMENT BACKWALLS.
  - CLEAN, PREPARE, AND RECOAT ALL EXISTING AND NEW EXPOSED STEEL SURFACES WITH AN ANTI-RUST SYSTEM. EXISTING STRUCTURE IS DESIGNATED A TYPE B STRUCTURE. INCLUDE DISPOSAL OF MATERIAL AND ENVIRONMENTAL PROTECTION AND HEALTH AND SAFETY.
  - REMOVE ABANDONED MOVABLE BRIDGE MECHANICAL COMPONENTS FROM THE BRIDGE SUPERSTRUCTURE, ON WEST EXTERIOR BEAM IN FIXED SPAN IN PARTICULAR.
  - INSTALL PAVEMENT MARKINGS IN ACCORDANCE WITH VDOT ROAD AND BRIDGE SPECIFICATIONS, SECTION 704 - PAVEMENT MARKINGS AND MARKERS.
- SWING SPAN REPAIRS
- REMOVE AND PROPERLY DISPOSE OF EXISTING STEEL GRID DECK (OPEN AND CONCRETE-FILLED), CONCRETE DECK, CURBS, STEEL TRUSS AND STEEL STRINGERS IN TRUSS PANELS 4 THROUGH 8 IN TRUSS PANEL 4. FURNISH AND INSTALL REINFORCED CONCRETE DECK SLAB AND CURBS IN TRUSS PANEL 4. FURNISH AND INSTALL STEEL GRID DECK, STEEL CURBS, AND STEEL STRINGERS IN TRUSS PANELS 5 THROUGH 8 AS INDICATED. REPAIR TWO (2) STEEL STRINGERS IN PANEL 4.
  - REMOVE PROPERLY DISPOSE OF, AND REPLACE EXISTING 7-INCH THICK REINFORCED CONCRETE DECK SLAB AND CURBS IN TRUSS PANEL 3 TO THE LIMITS INDICATED.
  - PROVIDE TEMPORARY SHORING, REPAIR TOP FLANGE AND WEB STIFFENERS), AND REPLACE BRACETS WITH HIGH STRENGTH BOLTS AT EXISTING NORTH PLATE GIRDER FLOOR BEAM AT TRUSS PANEL POINT L3 AT PIVOT PIER.
  - REPAIR OR REPLACE EXISTING BOTTOM CHORD LATERAL BRACES AND GUSSET PLATES AT LOCATIONS INDICATED.
- FIXED SPAN REPAIRS
- REMOVE AND PROPERLY DISPOSE OF EXISTING 7-INCH THICK REINFORCED CONCRETE DECK SLAB AND CURBS AND JOINT ANGLE ASSEMBLY TO THE LIMITS INDICATED. REPLACE CONCRETE SLAB AND CURBS AND INSTALL JOINT SEALANT AS INDICATED.
  - REPLACE EXISTING FIXED BEARINGS, INCLUDING ANCHOR BOLTS, AT ABUTMENT B.
  - INSTALL WEB REINFORCEMENT PLATE ON OUTSIDE OF WEST EXTERIOR STRINGER AT ABUTMENT B.
- SUBSTRUCTURE REPAIRS
- PERFORM PARTIAL CONCRETE CURB REPLACEMENT AT TOP OF PIVOT PIER.
- GENERAL REPAIRS
- FURNISH AND INSTALL ALL STEEL PIPE PILLS AND STRUCTURAL STEEL FOR TWO (2) SUPPLEMENTAL REST BENTS.
  - REPAIR FOUR (4) TIMBER BEARING PILES AND REPLACE EIGHT (8) TIMBER CROSS BRACES, INCLUDING HARDWARE, AT EXISTING OPERATOR'S BUILDING.
  - PLAN, PROVIDE, AND MAINTAIN TRAFFIC CONTROL/MAINTENANCE OF TRAFFIC THROUGHOUT THE DURATION OF THE CONSTRUCTION PERIOD.
  - PROVIDE ENVIRONMENTAL AND WORKER PROTECTION.
  - PROVIDE MOBILIZATION/DEMOBILIZATION.
  - PROVIDE CONSTRUCTION SURVEYING.
  - REMOVE ALL EXISTING BRIDGE SIGNS AND TURN OVER TO THE OWNER. THE OWNER WILL REINSTALL THE SIGNS AFTER COMPLETION OF THE WORK.
- ADDITIONAL BID ITEM 1
- REMOVE AND REPLACE IN ITS ENTIRETY SOUTH TIMBER FENDER SYSTEM AT PIVOT PIER, INCLUDE PROPER DISPOSAL AND COMPLETE REMOVAL OF ALL FENDER PILES.

EXISTING ELEVATION (LOOKING WEST)  
 SCALE: 3/32" = 1'-0"



EXISTING BRIDGE PLAN  
 SCALE: 1/32" = 1'-0"

