

FIGURE 26

LANDING GEAR ASSEMBLIES

FIGURE AND REF. NO.	PART NUMBER	PART NAME						UNITS REQUIRED ON MODELS	
		1	2	3	4	5	6	120	140
26-1	0411762	Plate	-	Landing Gear Fillet	-	Left		1	1
	0411762-1	Plate	-	Landing Gear Fillet	-	Right		1	1
26-2	0411763	Seal	-	Landing Gear Fillet				2	2
26-3	041115	Wedge	-	Landing Gear Support				4	4
26-4	PK76XZ-8-8	Screw						12	12
26-5	AN4-5A	Bolt						4	4
26-6	NAS147-59	Bolt						2	2
26-7	NAS143-7C	Washer						2	2
26-8	22FL720	Nut						2	2
26-	041101-4	Assembly	-	Main Landing Gear	-	Left - (Serial 8001-9174)		1	1
26-	041101-8	Assembly	-	Main Landing Gear	-	Left - (Serial 9175-13399)		1	1
26-	041103-4	Assembly	-	Main Landing Gear	-	Left - (Serial 13400 & Up)		1	1
26-9	0400106-4	Line Assembly	-	Brake	-	Left - (Serial 8001-9174)		1	1
26-9	0400106-48	Line Assembly	-	Brake	-	Left - (Serial 9175-14306)		1	1
26-9	0400106-74	Line Assembly	-	Brake	-	Left - (Serial 14307 & Up)		1	1
26-10	95-2353	Fairing	-	Complete	-	(Includes Screws & Lock Washers)		1	1
26-11	AN515-6-4	Screw						3	3
26-12	AN936-A6	Washer	-	Lock				3	3
26-13	0441107	Axle	-	Landing Gear	-	(Serial 8001-13399) (Axles On Serial 8001-8799 Must Have Center Flange Cut From Two Inch Dia. to 1.625 Dia. If 95-3422 Wheel and 95-20516 Brake Are Installed)		1	1
26-13	0441140	Axle	-	Landing Gear	-	(Serial 13400 & Up)		1	1
26-14	0441110	Spring	-	Main Landing Gear	-	(Serial 8001-13399)		1	1
26-14	0441138	Spring	-	Main Landing Gear	-	(Serial 13400-14306)		1	1
26-14	0441149	Spring	-	Main Landing Gear	-	Left - (Serial 14307 & Up)		1	1
26-15	0441112	Step Assembly	-	Main Landing Gear	-	Left		1	1
26-16	AN435-6P-16	Rivet						2	2
26-17	0441116-1	Shim	-	Main Landing Gear	-	(One Degree) (Serial 8001-13399)		1	1
26-17	0441139-1	Shim	-	Main Landing Gear	-	(One Degree) (Serial 13400 & Up)		1	1
26-17	0441116-2	Shim	-	Main Landing Gear	-	(Two Degree) (Serial 8001-13399)		1	1
26-17	0441139-2	Shim	-	Main Landing Gear	-	(Two Degree) (Serial 13400 & Up)		1	1
26-18	- - -	See Bolt and Washer Chart							
26-19	22FL428	Nut	-	Flexlock	-	(Serial 8001-13399)		4	4
26-19	AN365-524	Nut	-	(Serial 13400 & Up)				4	4
26-20	0441119	Hose	-	Brake Line Protector				2	2
26-21	0441126	Plate	-	Brake Disc Cover	-	Left - (Serial 8001-9174)		1	1
26-21	0441136	Plate	-	Brake Disc Cover	-	Left - (Serial 9175-13399)		1	1
26-21	0441141	Plate	-	Brake Disc Cover	-	Left - (Serial 13400 & Up)		1	1
26-22	6:00 x 6	Tire	-	4Ply Aircraft				1	1
	6:00 x 6	Tube	-	Aircraft				1	1
26-23	AN7502-24	Nut						1	1
26-24	AN380-4-3	Pin	-	Cotter				2	2
26-25	AN833-4D	Elbow						1	1
26-26	AN902-4	Gasket						1	1
26-27	AN924-4D	Nut						1	1
26-28	95-2311	Wheel Assembly	-	6:00 x 6 - (Cessna Print 0441006) (Serial 8001-9174) (See Figure 27 For Details)				1	1
26-28	95-3472	Wheel Assembly	-	6:00 x 6 - (Cessna Print 0441016) (Serial 9175 & Up) (See Figure 28 For Details)				1	1
26-29	9520298	Brake Assembly	-	Single Disc - (Cessna Print 0441009) (Serial 8001-9174) (See Figure 27 For Details)				1	1
26-29	9520517	Brake Assembly	-	Single Disc - (Cessna Print 0441015) (Serial 9175-13399) (See Figure 28 For Details)				1	1
26-29	0441137	Brake Assembly	-	Single Disc - (Serial 13400 & Up) (See Figure 28 For Details)				1	1
26-	0441101-5	Assembly	-	Main Landing Gear	-	Right - (Serial 8001-9174)		1	1
26-	0441101-9	Assembly	-	Main Landing Gear	-	Right - (Serial 9174-13399)		1	1
26-	0441103-5	Assembly	-	Main Landing Gear	-	Right - (Serial 13400 & Up)		1	1
26-9	0400106-5	Line Assembly	-	Brake	-	Right - (Serial 8001-9174)		1	1
26-9	0400106-49	Line Assembly	-	Brake	-	Right - (Serial 9175-14306)		1	1
26-9	0400106-75	Line Assembly	-	Brake	-	Right - (Serial 14307 & Up)		1	1
26-10	95-2353	Fairing Kit	-	Complete	-	(Includes Screws & Lock Washers)		1	1
26-11	AN515-6-4	Screw						3	3
26-12	AN936-A6	Washer	-	Lock				3	3
26-13	0441107	Axle	-	Landing Gear	-	(Serial 8001-13399) (See Note Item 13) - Left		1	1
26-13	0441140	Axle	-	Landing Gear	-	(Serial 13400 & Up)		1	1
26-14	0441110	Spring	-	Main Landing Gear	-	(Serial 8001-13399)		1	1
26-14	0441138	Spring	-	Main Landing Gear	-	(Serial 13400-14306)		1	1
26-14	0441149-1	Spring	-	Main Landing Gear	-	Right - (Serial 14307 & Up)		1	1
26-15	0441112-1	Step Assembly	-	Main Landing Gear	-	Right		1	1
26-16	AN435-6P-16	Rivet						2	2
26-17	0441116-1	Shim	-	Main Landing Gear	-	(One Degree) (Serial 8001-13399)		1	1

ORDER BY PART NUMBER AND NAME

SERIAL NUMBER AND COLOR IF APPLICABLE

ILLUSTRATED PARTS CATALOG

BOLT AND WASHER CHART FOR WHEEL ALIGNMENT SHIM INSTALLATION

SHIMS	SERIAL	UPPER FORWARD	LOWER FORWARD	UPPER AFT	LOWER AFT
No Shim	8001 to 9174	MAS144-50 Bolt	MAS144-58 Bolt	MAS144-58 Bolt	MAS144-58 Bolt
	9175 to 13599	MAS144-56 Bolt	MAS144-56 Bolt	MAS144-56 Bolt	MAS144-56 Bolt
One Degree Shim	13400 & Up	ANS-22A Bolt AN960-51.6 & 51.6L Washers	ANS-22A Bolt AN960-51.6 & 51.6L Washers	ANS-22A Bolt AN960-51.6 & 51.6L Washers	ANS-22A Bolt AN960-51.6 & 51.6L Washers
	8001 to 9174	MAS144-52 Bolt AN960-41.6L Washer	MAS144-40 Bolt AN960-41.6L Washer	MAS144-40 Bolt AN960-41.6 Washer	MAS144-40 Bolt AN960-41.6 & 41.6L Washers
One Degree Shim	9175 to 13599	MAS144-58 Bolt AN960-41.6L Washer	MAS144-58 Bolt AN960-41.6L Washer	MAS144-58 Bolt AN960-41.6 Washer	MAS144-58 Bolt AN960-41.6 & 41.6L Washers
	13400 & Up	ANS-22A Bolt AN960-51.6L Washer	ANS-22A Bolt	ANS-22A Bolt AN960-51.6 Washer	ANS-22A Bolt AN960-51.6 Washer
Two Degree Shim	8001 to 9174	MAS144-52 Bolt	MAS144-40 Bolt AN960-41.6L Washer	MAS144-40 Bolt AN960-41.6 Washer	MAS144-40 Bolt AN960-41.6 Washer
	9175 to 13599	MAS144-58 Bolt	MAS144-58 Bolt AN960-41.6L Washer	MAS144-58 Bolt AN960-41.6L Washer	MAS144-58 Bolt AN960-41.6 Washer
One & Two Degree Shim	13400 & Up	ANS-22A Bolt	ANS-22A Bolt	ANS-22A Bolt AN960-51.6L Washer	ANS-22A Bolt
	8001 to 9174	MAS144-54 Bolt AN960-41.6L Washer	MAS144-41 Bolt	MAS144-40 Bolt	MAS144-40 Bolt
One & Two Degree Shim	9175 to 13599	MAS144-40 Bolt AN960-41.6L Washer	MAS144-59 Bolt	MAS144-58 Bolt	MAS144-58 Bolt
	13400 & Up	ANS-22A Bolt	ANS-22A Bolt AN960-51.6L Washer	ANS-22A Bolt	ANS-22A Bolt

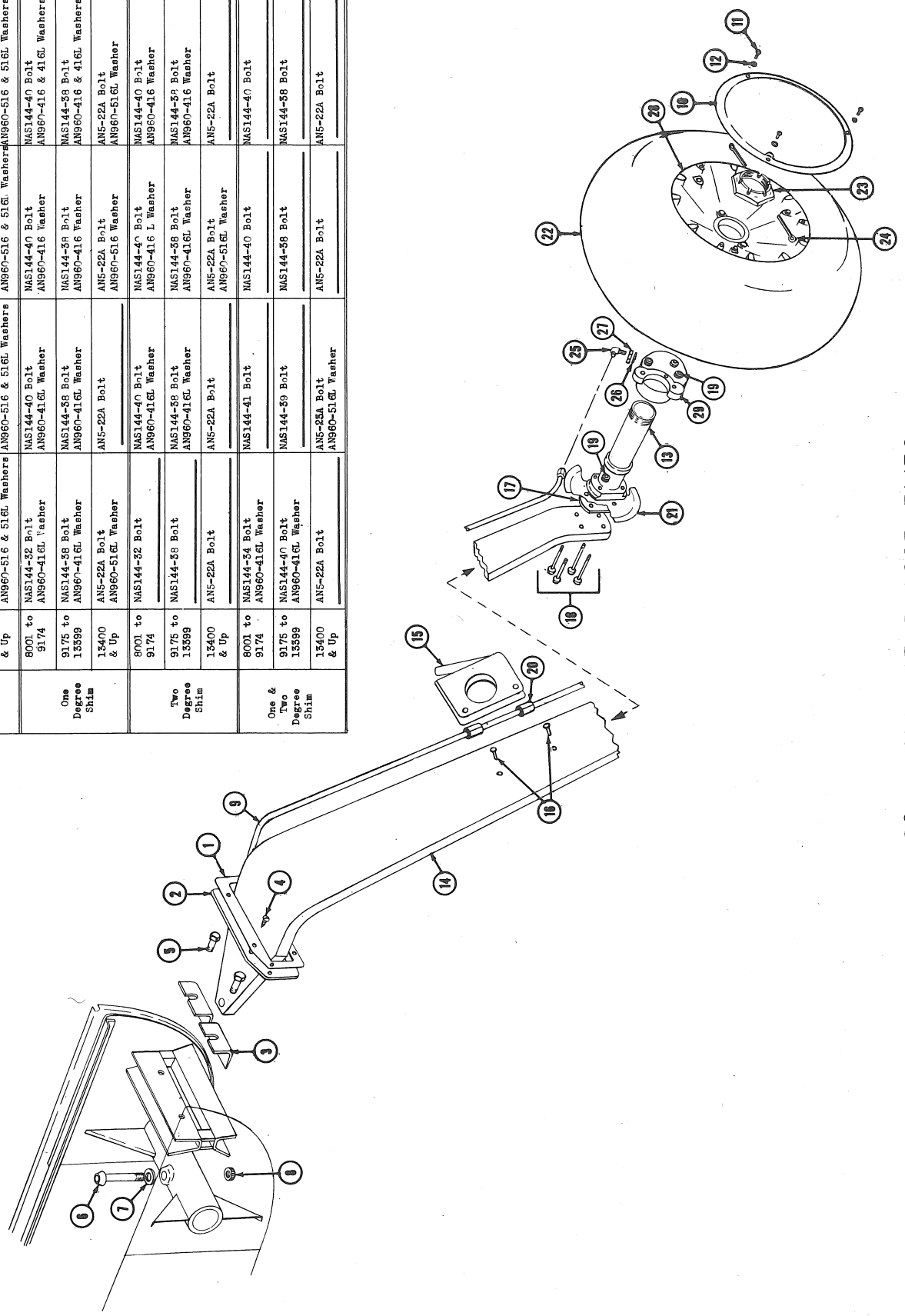


FIGURE 26-LANDING GEAR ASSEMBLIES

FIGURE 26

LANDING GEAR ASSEMBLIES

FIGURE AND REF. NO.	PART NUMBER	PART NAME	UNITS REQUIRED ON MODELS	
			120	140
26-17	0441139-1	Shim - Main Landing Gear - (One Degree) (Serial 13400 & Up)	1	1
26-17	0441116-2	Shim - Main Landing Gear - (Two Degree) (Serial 8001-13399)	1	1
26-17	0441139-2	Shim - Main Landing Gear - (Two Degree) (Serial 13400 & Up)	1	1
26-18	- - -	See Bolt And Washer Chart		
26-19	22FL428	Nut - Flexlock - (Serial 8001-13399)	4	4
26-19	AN365-524	Nut - (Serial 13400 & Up)	4	4
26-20	0441119	Hose - Brake Line Protector	2	2
26-21	0441126-1	Plate - Brake Disc Cover - Right - (Serial 8001-9174)	1	1
26-21	0441136-1	Plate - Brake Disc Cover - Right - (Serial 9175-13399)	1	1
26-21	0441141-1	Plate - Brake Disc Cover - Right - (Serial 13400 & Up)	1	1
26-22	6:00x6	Tire - 4Ply Aircraft	1	1
	6:00x6	Tube - Aircraft	1	1
26-23	AN7502-24	Nut	1	1
26-24	AN380-4-3	Pin - Cotter	2	2
26-25	AN833-4D	Elbow	1	1
26-26	AN902-4	Gasket	1	1
26-27	AN924-4D	Nut	1	1
26-28	95-2311	Wheel Assembly - 6:00x6 - (Serial 8001-9174)	1	1
26-28	95-3472	Wheel Assembly - 6:00x6 - (Serial 9175 & Up)	1	1
26-29	9520298	Brake Assembly - Single Disc - (Serial 8001-9174)	1	1
26-29	9520517	Brake Assembly - Single Disc - (Serial 9175-13399)	1	1
26-29	0441103-6	Brake Assembly - Single Disc - (Serial 13400 & Up)	1	1
Note: See Figures 27 & 28 For Details of Wheels And Brakes				

FIGURE 27

WHEEL AND BRAKE ASSEMBLIES - SERIAL 8001-9174

26-29	9520298	Brake Assembly - Main Landing Gear - Single Disc - (Cessna Print 0441009) (Serial 8001-9174)	1	1
27-1	9530289	Disc - Rotating - Brake	1	1
27-2	9510212	Clip - Anti-Rattle	4	4
27-4	95-2598	Housing - Brake Cylinder	1	1
27-5	9520448	Plug - Inlet	1	1
	AN902-4	Washer - Inlet	2	2
27-6	95-4508	Lining - Brake Stationary	1	1
27-7	95-4484	Lining - Brake Piston Side	1	1
27-8	95-2605	Plate - Pressure	1	1
27-9	AN6227-29	Seal - Piston And Cylinder Head	2	2
27-10	9510009	Piston	1	1
27-11	9510053	Cylinder Head	1	1
27-12	NAS50-200	Lockring - Truarc	1	1
27-13	AN520-10-5	Screw - Bleeder	1	1
27-14	95-4486	Washer - Aluminum Bleeder Screw	1	1
26-28	95-2311	Wheel Assembly - 6:00x6 - (Cessna Print 0441006) (Serial 8001-9174)	1	1
27-15	95-2391	Wheel Sub Assembly - Inboard Half	1	1
27-16	9520101	Key - Disc Drive	8	8
27-17	9520657	Screw - Disc Drive Key	8	8
27-18	AN4-47A	Bolt	3	3
27-19	95-0477	Cup - Inboard	1	1
27-20	95-2313	Wheel Sub Assembly - Outboard Half	1	1
27-21	95-0477	Cup - Outboard	1	1
27-22	AN960-416L	Washer	3	3
27-23	AN365-428	Nut	3	3
27-24	95-0476	Cone	2	2
27-25	95-1043	Ring - Bearing Retaining	2	2
27-26	AN504-6R-4	Screw	4	4
27-27	95-2243	Locking Terminals	4	4