

Overview

Flight Plan Summary

Flight Rules: VFR
Aircraft ID / Type: N402SH / B407
Cruising Speed / Level: 135 knots / 2000 feet
Departure Date & Time: 06/08/2022 1030 HST
Departure: PHKO
Destination: PHKO

Briefing Customization

Briefing Type: Standard / Route
Time Estimates Based On: Forecast Winds and Default Aircraft Performance
Route / Winds Aloft Corridor: 50 nm / 200 nm
Include Graphics: Yes **Include NextGen Content:** No **Include Plain Text Translations:** Yes

Briefing Content Filters:

Only include most recent METARs

Excluded En Route NAV NOTAMs: ILS, VORTAC, VOR-DME

Excluded FDC NOTAMs: IAP, ROUTE, SID, STAR



Table of Contents

Adverse Conditions	1
Temporary Flight Restrictions	1
Closed/Unsafe NOTAMs	1
Convective SIGMETs	1
SIGMETs	1
AIRMETs	1
Urgent PIREPs & AIREPs	2
Center Weather Advisories	2
Severe Weather	2
Volcanic Ash Advisories	2
Synopsis and Current Weather	2
Synopsis/Surface Analysis	2
METARs	3
PIREPs & AIREPs	4
Forecasts	4
Cloud Coverage	4
Visibility, Surface Winds & Precipitation	4
Terminal Aerodrome Forecasts	4
Winds Aloft	5
Area Forecast	7
Convective Outlooks	8
Notices to Airmen	8
Departure NOTAMs	9
Destination NOTAMs	9
En Route NOTAMs	10
Gen FDC NOTAMs	12
International NOTAMs	22
Uncategorized NOTAMs	27
Other	27
Flow Control	27
UAS Operating Area (UOA)	75
NHC Bulletins	75

Adverse Conditions

Temporary Flight Restrictions

None

Closed/Unsafe NOTAMs

All published NOTAMs are available in the [Notices to Airmen Publication \(NTAP\)](#).

Departure: PHKO, [Airport Information Page](#), [Airport Diagram](#)

None

Destination: PHKO, [Airport Information Page](#), [Airport Diagram](#)

None

Convective SIGMETs

None

SIGMETs

None

AIRMETs

AIRMET - IFR

None

AIRMET - Mountain Obscuration

None

AIRMET - Icing

None

AIRMET - Freezing Level

AIRMET issued by the Weather Forecast Office Honolulu, Hawaii on Jun 8, 1534Z (05:34 HST). Honolulu Forecast Area AIRMET Zulu prepared on Jun 8, 1600Z (06:00 HST). AIRMET Zulu update 2 for Ice and freezing level valid until Jun 8, 2200Z (12:00 HST). Freezing level Freezing level from 16,700 feet mean sea level to 17,000 feet mean sea level.

AIRMET - Turbulence Low Altitude

None

AIRMET - Turbulence High Altitude

None

AIRMET - Winds Over 30 Knots

None

AIRMET - Low Level Wind Shear

None

Urgent PIREPs & AIREPs

None

Center Weather Advisories

None

Severe Weather

None

Volcanic Ash Advisories

Departure: None

Route: None

Destination: None

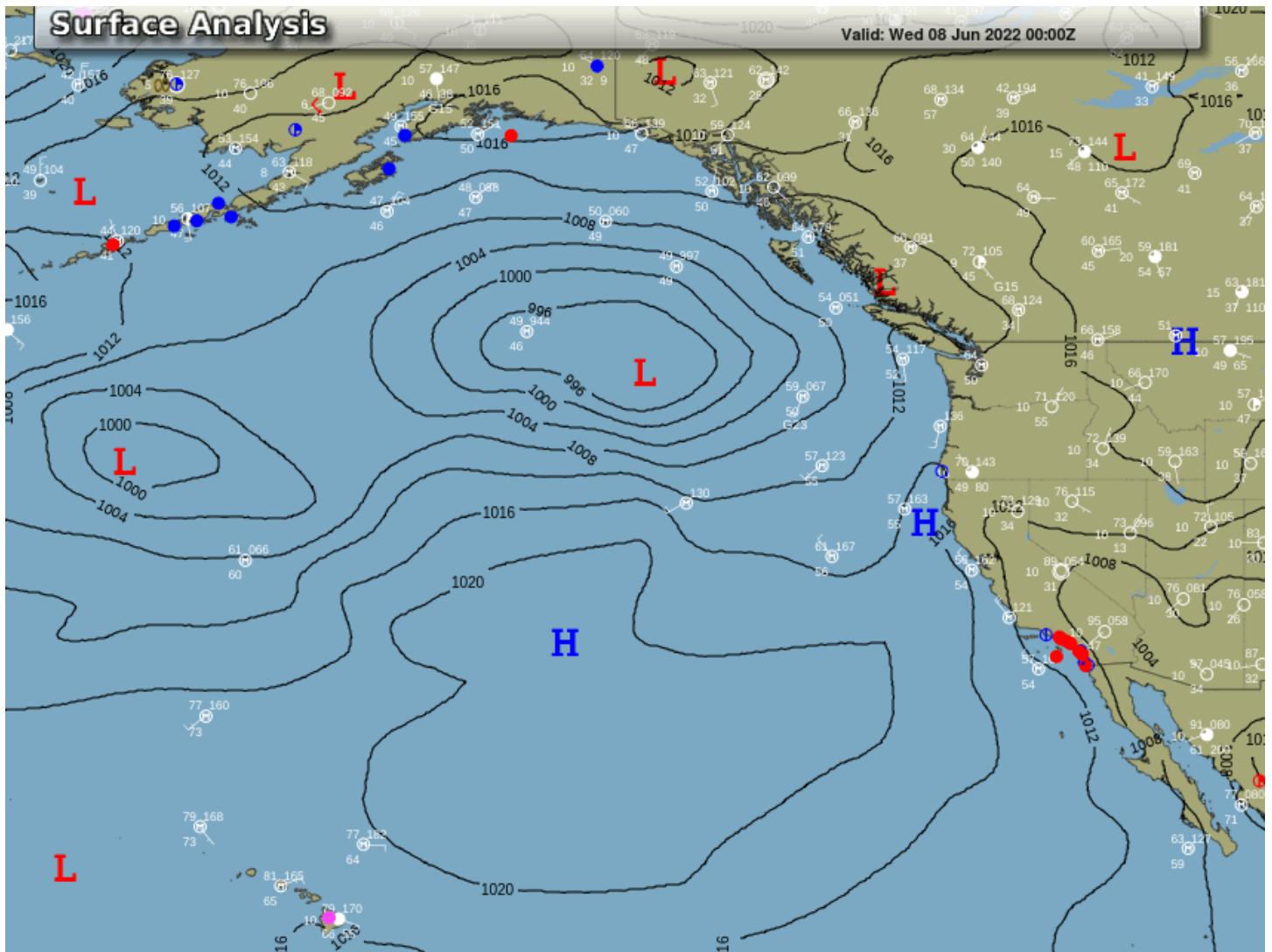
Alternate 1: None

Alternate 2: None

Other: None

Synopsis and Current Weather

Synopsis/Surface Analysis



Hawaiian area forecast issued by the Weather Forecast Office Honolulu, Hawaii on the 8th at 1534Z
FAOHI

Hawaii area forecast, prepared on the 8th at 1535Z

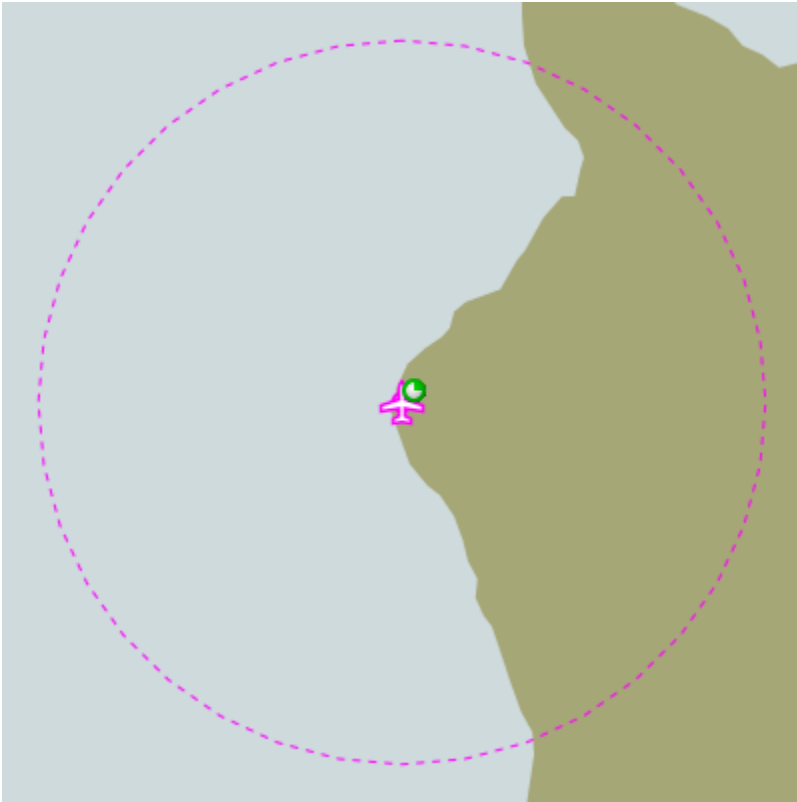
Synopsis and VFR cloud/weather

Synopsis valid until the 9th at 1000Z

Cloud/weather valid until the 9th at 0400Z...Outlook valid from the 9th at 0400Z to the 9th at 1000Z

Synopsis...Light to moderate trades will bring isolated showers to to the windward coasts and slopes through late this morning and into the afternoon. Otherwise... Dry conditions elsewhere.

METARs



	N/A	LIFR	IFR	MVFR	VFR
CLR	☉	🟡	🔴	🟢	🟩
FEW	☉	🟡	🔴	🟢	🟩
SCT	☉	🟡	🔴	🟢	🟩
BKN	☉	🟡	🔴	🟢	🟩
OVC	☉	🟡	🔴	🟢	🟩

VFR PHKO 081853Z

E Onizuka Kona International at Keahole, Kailua/Kona, HI (PHKO). Jun 8, 1853Z (08:53 HST). Wind from 210° at 9 knots, 10 statute miles visibility, Scattered Clouds at 6,500 feet, Temperature 27°C, Dewpoint 21°C, Altimeter is 30.03. Remarks: automated station with precipitation discriminator sea level pressure 1016.8 hectopascals hourly temp 27.2°C dewpoint 20.6°C

PIREPs & AIREPs

None

Forecasts

Cloud Coverage

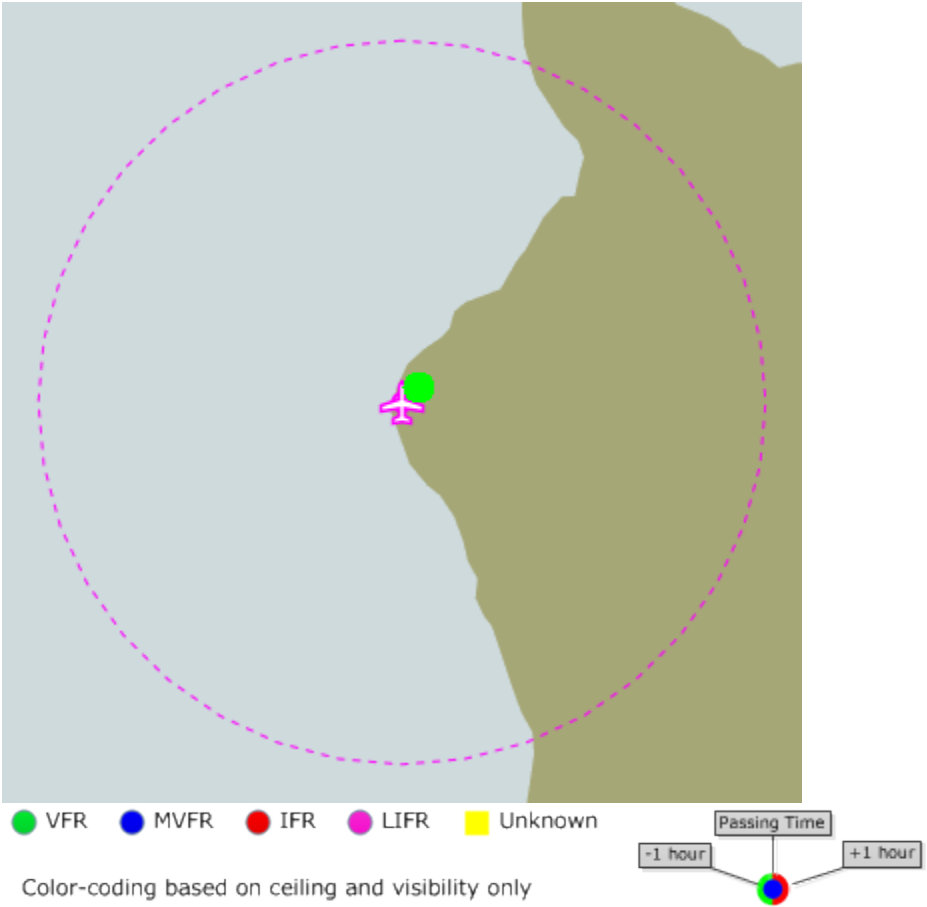
None

Visibility, Surface Winds & Precipitation

None

Terminal Aerodrome Forecasts

Flight passes by the TAF forecast stations at the passing times in bold below.



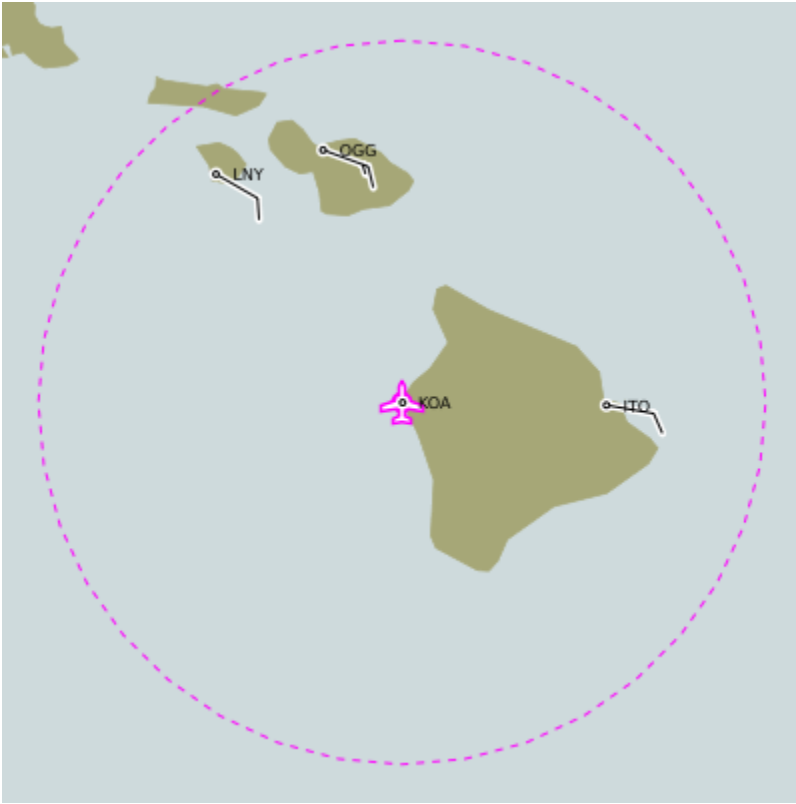
TAF nearest departure: PHKO

E Onizuka Kona International at Keahole, Kailua/Kona, HI (PHKO). Issued Jun 8, 1728Z (07:28 HST), valid from Jun 8, 1800Z (08:00 HST) until Jun 9, 1800Z (08:00 HST), Wind from 240° at 11 knots, greater than 6 statute miles visibility, Few Clouds at 3,000 feet, Scattered Clouds at 5,000 feet

From Jun 9, 0600Z (Jun 8, 20:00 HST), Wind is variable at 6 knots, greater than 6 statute miles visibility, Scattered Clouds at 4,000 feet, Ceiling is Broken at 7,000 feet.

TAF nearest destination: PHKO

Winds Aloft



Wind Barbs			
Speed (kts/mph)	Symbol	Speed (kts/mph)	Symbol
Calm	○	38-42 / 44-49	////
1-2 / 1-2	—	43-47 / 50-54	////
3-7 / 3-8	—	48-52 / 55-60	////
8-12 / 9-14	— /	53-57 / 61-66	//// /
13-17 / 15-20	— /	58-62 / 67-71	//// /
18-22 / 21-25	— / /	63-67 / 72-77	//// / /
23-27 / 26-31	— / /	68-72 / 78-83	//// / /
28-32 / 32-37	— / / /	73-77 / 84-89	//// / / /
33-37 / 38-43	— / / /	103-107 / 119-123	//// / / /

270023+18
 Direction — Speed (knots) — Temperature (°C)

PART 1 - Flight Levels 010-180 (PART 2 - Flight Levels 240-530 available [below](#))

Station ID	010	015	020 Filed	030	040 Filed+2k	060 Filed+4k	090	120	150	180
081800Z 1400Z-2100Z										
KOA	LGTVRB	LGTVRB	LGTVRB	190005		LGTVRB+12	LGTVRB+11	070007+06	070009+01	070010-05
ITO	110005	100007	100008	120011	123009	130007+12	070014+11	060015+05	060016+01	070017-05
OGG	100014	110015	110015	110015	120013	140011+13	110018+12	100014+06	090013+01	100012-05
LNY			120009	140006	143007	150009+12	120019+12	110015+06	100013+01	090008-05
090000Z 2100Z-0600Z										
KOA	LGTVRB	LGTVRB	240005	LGTVRB	LGTVRB	LGTVRB+13	060005+11	060007+06	060009+02	070013-04
ITO	120006	110007	110007	120009		LGTVRB+14	070011+11	060011+06	080012+02	080015-05

OGG	100016	100017	110017	120014	123012	130008+14	090014+12	070012+06	080012+02	090015-05
LNy			090008	090007	103006	130006+14	090010+12	080010+06	080011+01	100013-05

PART 2 - Flight Levels 240-530 (PART 1 - Flight Levels 010-180 available [above](#))

Station ID	240	300	340	390	450	530
081800Z 1400Z-2100Z						
KOA	070010-18	040010-35	050008-45	070017-54	090007-65	070006-73
ITO	050014-18	030011-36	040009-45	070016-54	090007-65	070005-73
OGG	080012-17	060010-35	080020-45	080039-54	080013-66	070010-73
LNy	080010-17	060008-35	080019-45	080038-54	070009-66	070010-73
090000Z 2100Z-0600Z						
KOA	050013-18	020015-36	030013-45	060014-54	060007-65	120010-72
ITO	050015-18	010018-36	030013-44	060010-54	060005-65	120015-73
OGG	060014-18	040016-35	060021-44	080032-55	100012-66	100009-72
LNy	070013-18	030015-35	060019-45	080032-55	090012-66	090008-72

Area Forecast



Hawaiian area forecast issued by the Weather Forecast Office Honolulu,
Hawaii on the 8th at 1534Z
FA0HI

Hawaii area forecast, prepared on the 8th at 1535Z

Synopsis and VFR cloud/weather

Synopsis valid until the 9th at 1000Z

Cloud/weather valid until the 9th at 0400Z...Outlook valid from the 9th at
0400Z to the 9th at 1000Z



See AIRMET SIERRA For IFR Cloud And Mountain Obscure.

Thunderstorms imply severe OR greater turbulence severe ice low level SIGMET and IFR condition. Non mean sea level height indicated by above ground level OR ceiling.

Interior Big Island Above 7,000 Feet. Sky Clear. 2100Z Few Clouds At 8,000 Feet.
Outlook...VFR.

Big Island Lower Slopes...Coast...And Adjacent Waters From LAUPAHOEHOE To Cape Kumukahi To Apua Point.
Few to scattered clouds at 2,500 feet scattered clouds at 4,500 feet temporary broken clouds at 4,500 feet tops at
7,000 feet isolated broken clouds at 2,000 feet tops at 8,000 feet light rain showers. Outlook...VFR.

Big Island Lower Slopes...Coast...And Adjacent Waters From Apua Point To South Cape To Upolu Point To
LAUPAHOEHOE.

Few clouds at 3,000 feet scattered clouds at 5,000 feet isolated broken clouds at 3,500 feet tops at 7,000 feet.
Outlook...VFR.

Mountain...N Through E Sections And Adjacent Waters Of Maui Molokai Lanai Oahu And Kauai.

Few clouds at 2,500 feet scattered clouds at 3,500 feet isolated broken clouds at 3,000 feet tops at 8,000 feet light
rain showers. Outlook...VFR.

Rest Of Area.

Few to scattered clouds at 3,000 feet scattered clouds at 5,000 feet. Outlook...VFR.

Convective Outlooks

A convective Outlook is not available for the briefed flight time

Notices to Airmen

Departure NOTAMs

All published NOTAMs are available in the [Notices to Airmen Publication \(NTAP\)](#).

Navigation: None

Communication: None

Service: None

Obstruction within 10 nm: None

Airspace within 10 nm: None

Special Use Airspace within 10 nm: None

Runway: None

Taxiway:

IKOA 11/013 E Onizuka Kona International at Keahole, Kailua/Kona, HI (PHKO) Taxiway A, C, H, G centerline and surface marking not standard Nov 25, 2020 2038Z (10:38 HST)-permanent

Apron: None

Aerodrome: None

FDC: None

Other/Unverified: None

Military: None

Destination NOTAMs

All published NOTAMs are available in the [Notices to Airmen Publication \(NTAP\)](#).

Navigation: None

Communication: None

Service: None

Obstruction within 10 nm: None

Airspace within 10 nm: None

Special Use Airspace within 10 nm: None

Runway: None

Taxiway:

IKOA 11/013 E Onizuka Kona International at Keahole, Kailua/Kona, HI (PHKO) Taxiway A, C, H, G centerline and

surface marking not standard Nov 25, 2020 2038Z (10:38 HST)-permanent

Apron: None

Aerodrome: None

FDC: None

Other/Unverified: None

Military: None

En Route NOTAMs

All published NOTAMs are available in the [Notices to Airmen Publication \(NTAP\)](#).

Navigation:

None

Communication:

None

Service:

None

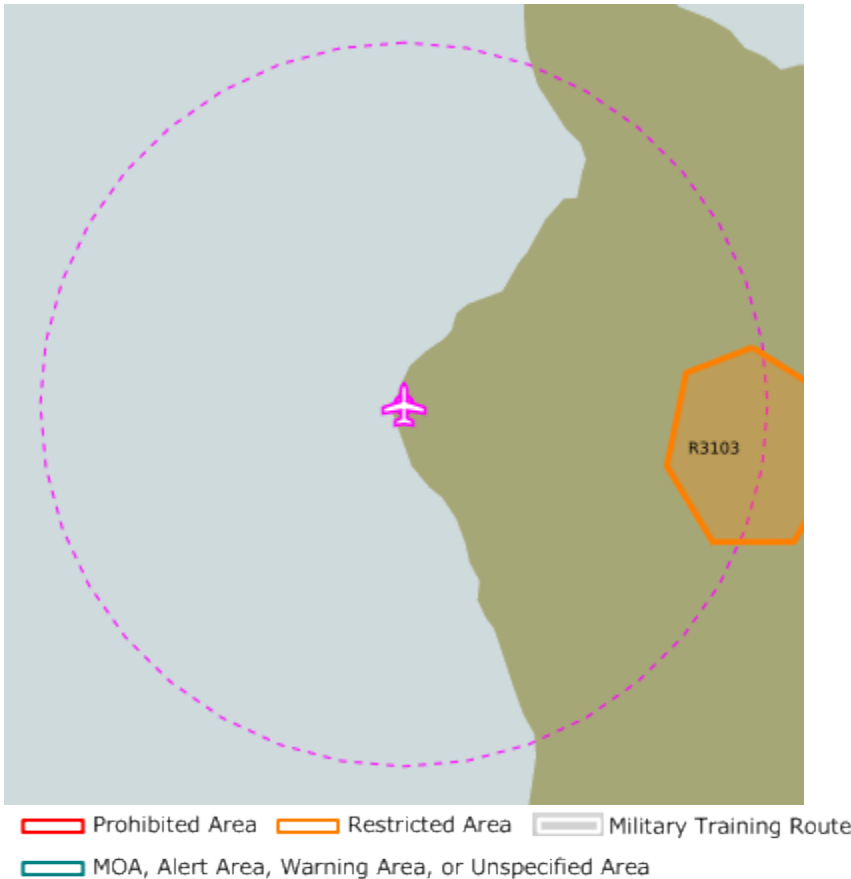
Obstruction:

None

Airspace:

None

Special Use Airspace:



ISUAW 05/616 PHZH Airspace R3103 active surface to flight level 300 May 31, 2022 2201Z (12:01 HST) to Jun 30, 2022 2200Z (12:00 HST)

Runway/Taxiway/Apron/Aerodrome/FDC:

Summary graphic is not available.

IFDC 0/2312 8LA1 SPECIAL CHEVRON USA INC, VENICE, LA. COPTER GPS 146, ORIG ... COPTER GPS 326, ORIG ... PROCEDURE NA. 202009141119-202209141118EST (Not Depicted On Graphics)

Other/Unverified:

None

Military:

Summary graphic is not available.

!K2CB L0005/22 K2CB Aerodrome ANDERSON BARTLETT located on north post (CARS temperature-1, R2904A) closed due to staging area for equipment and personnel. Jun 07, 2022 1805Z to Jun 18, 2022 1900Z (Not Depicted On Graphics)

!K2CB L0004/22 K2CB Aerodrome landing zone 159 located on south post (CARS temperature-3, R2903A), closed due to staging area for equipment and personnel. Jun 08, 2022 1130Z to Jun 14, 2022 2100Z (Not Depicted On Graphics)

!K3G5 M0029/22 K3G5 Geese located on DAWSON grounds and around airfield Jun 01, 2022 1500Z to Jun 30, 2022 2359Z (Not Depicted On Graphics)

!K3G5 M0028/22 K3G5 All aircraft parking will be at A heading of 05 OR 23 Jun 01, 2022 1445Z to Jun 30, 2022 2359Z (Not Depicted On Graphics)

!K3G5 M0027/22 K3G5 Runway end identifier lights runway 23 unserviceable Jun 01, 2022 1444Z to Jun 30, 2022 2359Z (Not Depicted On Graphics)

!K3G5 M0025/22 K3G5 Prior permission required required for all fix and rotor wing aircraft Jun 01, 2022 1440Z to Jun 30, 2022 2359Z (Not Depicted On Graphics)

!K3G5 M0023/22 K3G5 Precision approach path indicator/visual approach slope indicator out of service UTFN Jun 01, 2022 1437Z to Jun 30, 2022 2359Z (Not Depicted On Graphics)

!KGRF M0356/22 KZ99 Taxiway B closed to all aircraft due to unmanned aircraft system presence. Jun 01, 2022 0700Z to Jun 16, 2022 0659Z (Not Depicted On Graphics)

Gen FDC NOTAMs

All published NOTAMs are available in the [Notices to Airmen Publication \(NTAP\)](#).

ARTCC NOTAMs:

IFDC 2/5806 PHZH AIRSPACE ADS-B, AUTO DEPENDENT SURVEILLANCE REBROADCAST (ADS-R), TFC INFO SERVICE BCST (TIS-B), FLT INFO SERVICE BCST (FIS-B) SERVICES MAY NOT BE AVBL WI AN AREA DEFINED AS 88NM RADIUS OF 224638N1573037W. AP AIRSPACE AFFECTED MAY INCLUDE HNL, JRF. SFC-16000FT. 202206081520-202206202200

IFDC 2/5806 PHZH AIRSPACE ADS-B, AUTO DEPENDENT SURVEILLANCE REBROADCAST (ADS-R), TFC INFO SERVICE BCST (TIS-B), FLT INFO SERVICE BCST (FIS-B) SERVICES MAY NOT BE AVBL WI AN AREA DEFINED AS 88NM RADIUS OF 224638N1573037W. AP AIRSPACE AFFECTED MAY INCLUDE HNL, JRF. SFC-16000FT. 202206081520-202206202200

Chart NOTAMs:

IFDC 2/9561 FDC CHART CORRECT U.S. GOVERNMENT DALLAS-FT. WORTH VFR SECTIONAL AERONAUTICAL CHART, EFFECTIVE 24 MAR 2022... PRINTED CHART ONLY. SEE SAFETY ALERT VIS 22-01 SA AVAILABLE AT [HTTPS://WWW.FAA.GOV/AIR_TRAFFIC/FLIGHT_INFO/AERONAV/SAFETY_ALERTS/](https://www.faa.gov/air_traffic/flight_info/aeronav/safety_alerts/). . 202203251811-PERM

IFDC 2/6253 FDC CHART CORRECT U.S. GOVERNMENT VFR DALLAS-FT. WORTH TERMINAL AREA CHART (TAC)/FLYWAY, EFFECTIVE 19 MAY 2022... ADD RNAV WAYPOINTS AND RNAV RTE T370 FM RNAV WPT BURBN 33 32 09N, 097 49 15W TO RNAV WPT RRORY 33 32 15N, 096 14 03W TO RNAV WPT TASEY 33 32 32N, 095 26 54W.. 202204281940-PERM

IFDC 2/6246 FDC CHART CORRECT U.S. GOVERNMENT SAINT LOUIS VFR SECTIONAL AERONAUTICAL CHART, EFFECTIVE 19 MAY 2022... FOR RNAV RTE T419 ADD RNAV WPT TERGE AT POCKET CITY VORTAC (PXV), EVANSVILLE, IN LOCATED AT 37 55 42N, 087 45 44W AND ADD RNAV WPT MESSR AT CUNNINGHAM VORDME (CNG), PADUCAH, KY LOCATED AT 37 00 30N, 088 50 13W.. 202204281926-PERM

IFDC 2/5843 FDC CHART CORRECT U.S. GOVERNMENT IFR ENROUTE HIGH ALTITUDE CHART AKH2, PANEL I,J, EFFECTIVE 27 JAN 2022... ON PANEL I, CHANGE BEARING FROM 251 TO 258 FROM PUGGY TO HODDY ON R341. ALSO, CHANGE BEARING FROM 072 TO 080 FROM PUGGY TO CHUUK ON R341. ON PANEL J, CHANGE BEARING FROM 256 TO 262 FROM CHUUK TO PUGGY ON R341.. 202203171409-PERM

IFDC 2/1325 FDC CHART CORRECT U.S. GOVERNMENT SAINT LOUIS VFR SECTIONAL AERONAUTICAL CHART, EFFECTIVE 19 MAY 2022... ADD MALDEN RCO (SAINT LOUIS RADIO) FREQ 122.6 AT MALDEN VORTAC, MALDEN, MO LOCATED AT 36 33 18N, 089 54 41W.. 202205091905-PERM

Other NOTAMs:

IFDC 2/8145 FDC SECURITY..SPECIAL SECURITY INSTRUCTIONS FOR UNMANNED AIRCRAFT SYSTEM (UAS) OPERATIONS IN THE VICINITY OF CAPE CANAVERAL AND THE KENNEDY SPACE CENTER. PURSUANT TO 49 U.S.C. SECTION 40103(B)(3), THE FAA CLASSIFIES THE AIRSPACE DEFINED IN THIS NOTAM AND IN FURTHER DETAIL BY THE FAA WEBSITE IDENTIFIED BELOW AS 'NATIONAL DEFENSE AIRSPACE'. UAS OPERATORS WHO DO NOT COMPLY WITH APPLICABLE AIRSPACE RESTRICTIONS ARE WARNED THAT PURSUANT TO 10 U.S.C. SECTION 130I AND 6 U.S.C. SECTION 124N, THE DEPARTMENT OF DEFENSE (DOD), DEPARTMENT OF HOMELAND SECURITY (DHS), OR THE DEPARTMENT OF JUSTICE (DOJ) MAY TAKE SECURITY ACTION THAT RESULTS IN THE INTERFERENCE, DISRUPTION, SEIZURE, DAMAGING, OR DESTRUCTION OF UNMANNED AIRCRAFT DEEMED TO POSE A CREDIBLE SAFETY OR SECURITY THREAT TO PROTECTED PERSONNEL, FACILITIES, OR ASSETS. THE DEPARTMENT OF DEFENSE (DOD) MAY TAKE SECURITY ACTION THAT RESULTS IN THE INTERFERENCE, DISRUPTION, SEIZURE, DAMAGING, OR DESTRUCTION OF UNMANNED AIRCRAFT CONSIDERED TO POSE A SAFETY OR SECURITY THREAT TO PROTECTED NATIONAL SECURITY ASSETS. SECURITY..SPECIAL SECURITY INSTRUCTIONS FOR UNMANNED PURSUANT TO 14 C.F.R. SECTION 99.7, SPECIAL SECURITY (SSI), ALL UNMANNED AIRCRAFT ARE PROHIBITED FROM FLYING WITHIN RESTRICTED AREA R-2932. THE AIRSPACE IN WHICH UAS OPERATIONS MUST COMPLY WITH THIS SSI IS DEFINED AS THE AIRSPACE, SFC-5000FT MSL, GENERALLY OVERLYING: CAPE CANAVERAL AND THE KENNEDY SPACE CENTER TO EXTEND INTO THE ATLANTIC. THE AIRSPACE IN WHICH THIS SSI APPLIES IS VISUALLY DEPICTED AND GEOSPATIALLY DEFINED ON THE FOLLOWING FAA WEBSITE: [HTTPS://UDDS-FAA.OPENDATA.ARCGIS.COM](https://UDDS-FAA.OPENDATA.ARCGIS.COM). UAS OPERATORS NEEDING TO OPERATE IN THE DEFINED AIRSPACE FOR OVERRIDING REASONS OF PUBLIC INTEREST OR NECESSITY (SUCH AS IN DIRECT SUPPORT OF AN ACTIVE NATIONAL DEFENSE, HOMELAND SECURITY, LAW ENFORCEMENT, FIREFIGHTING, SEARCH AND RESCUE, OR DISASTER RESPONSE MISSION) MUST COORDINATE AND OBTAIN ADVANCE AUTHORIZATION FROM THE APPROPRIATE DOD POINT OF CONTACT IDENTIFIED IN THE FOLLOWING FAA WEBSITE: UNMANNED [HTTPS://UDDS-FAA.OPENDATA.ARCGIS.COM](https://UDDS-FAA.OPENDATA.ARCGIS.COM). OPERATORS UNABLE TO SUCCESSFULLY COORDINATE WITH THESE DOD POINTS OF CONTACT MAY CONTACT THE FAA SYSTEM OPERATIONS SUPPORT CENTER (SOSC) AT (202) 267-8276 FOR FURTHER ASSISTANCE. SECURITY..SPECIAL SECURITY INSTRUCTIONS FOR UNMANNED IF YOU HAVE GENERAL QUESTIONS REGARDING UAS OPERATIONS, PLEASE REFER TO THE FOLLOWING FAA WEBSITE: WWW.FAA.GOV/UAS/CONTACT; OR CONTACT THE FAA VIA EMAIL AT UASHELP@FAA.GOV OR PHONE AT (844) FLY-MY-UA. IF YOU HAVE QUESTIONS REGARDING THIS UAS SSI, PLEASE REFER TO THE FOLLOWING FAA WEBSITE:[HTTPS://UDDS-FAA.OPENDATA.ARCGIS.COM](https://UDDS-FAA.OPENDATA.ARCGIS.COM); OR CONTACT THE FAAS SOSC AT (202)267-8276. 202203010500-202303010500

IFDC 2/2422 FDC SPECIAL ADVISORY NOTICE. A WARNING SIGNAL FOR COMMUNICATING WITH AIRCRAFT IS DEPLOYED AND IS OPERATING WITHIN THE WASHINGTON DC SPECIAL FLIGHT RULES AREA (SFRA), INCLUDING THE FLIGHT RESTRICTED ZONE (FRZ). THE SIGNAL CONSISTS OF HIGHLY FOCUSED RED AND GREEN COLORED LIGHTS IN AN ALTERNATING RED/RED/GREEN SIGNAL PATTERN. THIS SIGNAL MAY BE DIRECTED AT SPECIFIC AIRCRAFT SUSPECTED OF MAKING UNAUTHORIZED ENTRY INTO THE SFRA/FRZ AND ARE ON A HEADING OR FLIGHT PATH THAT MAY BE INTERPRETED AS A THREAT OR AT THE REQUEST OF THE

FAA. THE BEAM IS NOT INJURIOUS TO THE EYES OF PILOTS/AIRCROWS OR PASSENGERS, REGARDLESS OF ALTITUDE OR DISTANCE FROM THE SOURCE. IF YOU ARE IN COMMUNICATION WITH AIR TRAFFIC CONTROL AND THIS SIGNAL IS DIRECTED AT YOUR AIRCRAFT, WE ADVISE YOU TO IMMEDIATELY COMMUNICATE WITH ATC THAT YOU ARE BEING ILLUMINATED BY A VISUAL WARNING SIGNAL. IF THIS SIGNAL IS DIRECTED AT YOU AND YOU ARE NOT COMMUNICATING WITH ATC, WE ADVISE YOU TO TURN TO A HEADING AWAY FROM THE CENTER OF THE FRZ/SFRA AS SOON AS POSSIBLE AND IMMEDIATELY CONTACT ATC ON AN APPROPRIATE FREQUENCY, OR IF UNSURE OF THE FREQUENCY, CONTACT ATC ON VHF GUARD 121.5 OR UHF GUARD 243.0. BE ADVISED THAT FAILURE TO FOLLOW THE RECOMMENDED PROCEDURES OUTLINED ABOVE MAY RESULT IN INTERCEPTION BY MILITARY AIRCRAFT AND/OR THE USE OF FORCE. THIS NOTICE ONLY APPLIES TO VFR AIRCRAFT OPERATING WITHIN THE SFRA/FRZ, INCLUDING DOD, LAW ENFORCEMENT, AND AEROMEDICAL OPERATIONS. THIS NOTICE DOES NOT CHANGE PROCEDURES ESTABLISHED FOR REPORTING UNAUTHORIZED LASER ILLUMINATION AS PUBLISHED IN ADVISORY CIRCULAR 70-2. "THIS SIGNAL MAY BE DIRECTED AT SPECIFIC AIRCRAFT SUSPECTED OF MAKING UNAUTHORIZED ENTRY INTO THE SFRA/FRZ AND ARE ON A HEADING OR FLIGHT PATH THAT MAY BE INTERPRETED AS A THREAT OR THAT OPERATE CONTRARY TO THE OPERATING RULES FOR THE SFRA/FRZ". 201201131638-PERM

IFDC 1/8374 FDC SPECIAL NOTICE...NATIONAL SECURITY ADVISORY FOR UNMANNED AIRCRAFT SYSTEM (UAS) OPERATIONS IN PROXIMITY TO SELECT LOCATIONS AND MOBILE ASSETS NATIONWIDE. THIS NOTAM REPLACES NOTAM FDC 0/0230. IN THE INTEREST OF NATIONAL SECURITY, UAS OPERATORS ARE STRONGLY ADVISED TO AVOID FLYING IN CLOSE PROXIMITY (GENERALLY, IN AIRSPACE WITHIN 3000FT LATERALLY AND 1000FT ABOVE UNLESS INDICATED BY THE FAA BY NOTAM OR OTHER MEANS) TO: DEPARTMENT OF DEFENSE (DOD) AND DEPARTMENT OF ENERGY (DOE) FACILITIES AND MOBILE ASSETS, INCLUDING VESSELS AND GROUND VEHICLE CONVOYS AND THEIR ASSOCIATED ESCORTS, SUCH AS UNITED STATES COAST GUARD (USCG) OPERATED VESSELS. PURSUANT TO 49 U.S.C. SECTION 40103(B)(3), THE FAA CLASSIFIES THE AIRSPACE DEFINED IN THIS NOTAM AND IN FURTHER DETAIL BY THE FAA WEBSITE IDENTIFIED BELOW AS 'NATIONAL DEFENSE AIRSPACE'. UAS OPERATORS WHO DO NOT COMPLY WITH APPLICABLE AIRSPACE RESTRICTIONS ARE WARNED THAT PURSUANT TO 10 U.S.C. SECTION 130I AND 6 U.S.C. SECTION 124N, THE DEPARTMENT OF DEFENSE (DOD), DEPARTMENT OF HOMELAND SECURITY (DHS), OR THE DEPARTMENT OF JUSTICE (DOJ) MAY TAKE SECURITY ACTION THAT RESULTS IN THE INTERFERENCE, DISRUPTION, SEIZURE, DAMAGING, OR DESTRUCTION OF UNMANNED AIRCRAFT DEEMED TO SPECIAL NOTICE...NATIONAL SECURITY ADVISORY FOR POSE A CREDIBLE SAFETY OR SECURITY THREAT TO PROTECTED PERSONNEL, FACILITIES, OR ASSETS. THE FAA RECOMMENDS THAT UAS OPERATORS NEEDING TO OPERATE IN THE INDICATED AIRSPACE FOR OVERRIDING REASONS OF PUBLIC INTEREST OR NECESSITY (SUCH AS IN DIRECT SUPPORT OF AN ACTIVE NATIONAL DEFENSE, HOMELAND SECURITY, LAW ENFORCEMENT, FIREFIGHTING, SEARCH AND RESCUE, OR DISASTER RESPONSE MISSION) COORDINATE IN ADVANCE WITH THE APPROPRIATE DOD, DOE, OR USCG ENTITY, OR BY CONTACTING THE FAA. DOD, DOE, AND USCG POINTS OF CONTACT FOR SPECIFIC COVERED FACILITIES AND MOBILE ASSETS MAY BE AVAILABLE ON THE FOLLOWING FAA WEBSITE: [HTTPS://UDDS-FAA.OPENDATA.ARCGIS.COM](https://udds-faa.opendata.arcgis.com). OPERATORS UNABLE TO SUCCESSFULLY COORDINATE WITH DOD, DOE, OR USCG POINTS OF CONTACT MAY CONTACT THE FAA SYSTEM OPERATIONS SUPPORT CENTER (SOSC) AT (202) 267-8276 FOR FURTHER ASSISTANCE. THE FAA APPLIES, TO THE MAXIMUM EXTENT PRACTICABLE, SPECIAL SECURITY INSTRUCTIONS (SSI) PURSUANT TO 14 C.F.R. SECTION 99.7 OR OTHER AIRSPACE MEASURES THAT RESTRICT UAS OPERATIONS IN PROXIMITY TO FACILITIES AND MOBILE ASSETS COVERED BY 10 U.S.C. SECTION 130I AND 50 U.S.C. SECTION 2661. HOWEVER, IMPLEMENTING ADVANCE SSI OR OTHER SPECIAL

NOTICE...NATIONAL SECURITY ADVISORY FOR AIRSPACE MEASURES MAY NOT BE FEASIBLE FOR ALL COVERED ASSETS AND MOBILE ASSET OPERATIONS. UAS OPERATORS SHOULD THEREFORE EXERCISE CAUTION WHEN FLYING IN PROXIMITY OF ALL DOD AND DOE FACILITIES AND MOBILE ASSETS, AND USCG MOBILE ASSETS. IF YOU HAVE GENERAL QUESTIONS REGARDING UAS OPERATIONS, PLEASE REFER TO WWW.FAA.GOV/UAS/CONTACT; OR CONTACT THE FAA VIA EMAIL AT UASHELP@FAA.GOV OR PHONE AT (844) FLY-MY-UA. IF YOU HAVE QUESTIONS REGARDING UAS-SPECIFIC SSI, PLEASE REFER TO THE FOLLOWING FAA WEBSITE:[HTTPS://UDDS-FAA.OPENDATA.ARCGIS.COM](https://UDDS-FAA.OPENDATA.ARCGIS.COM); OR CONTACT THE FAAS SOSC AT (202)267-8276. 202110291430-202310291430

IFDC 1/8373 FDC SECURITY..SPECIAL SECURITY INSTRUCTIONS FOR UNMANNED AIRCRAFT SYSTEM (UAS) OPERATIONS IN THE VICINITY OF NAVAL BASE KITSAP AND NAVAL SUBMARINE BASE KINGS BAY. THIS NOTAM REPLACES NOTAM FDC 0/0229. PURSUANT TO 49 U.S.C. SECTION 40103(B)(3), THE FAA CLASSIFIES THE AIRSPACE DEFINED IN THIS NOTAM AND IN FURTHER DETAIL BY THE FAA WEBSITE IDENTIFIED BELOW AS 'NATIONAL DEFENSE AIRSPACE'. UAS OPERATORS WHO DO NOT COMPLY WITH APPLICABLE AIRSPACE RESTRICTIONS ARE WARNED THAT PURSUANT TO 10 U.S.C. SECTION 130I AND 6 U.S.C. SECTION 124N, THE DEPARTMENT OF DEFENSE (DOD), DEPARTMENT OF HOMELAND SECURITY (DHS), OR THE DEPARTMENT OF JUSTICE (DOJ) MAY TAKE SECURITY ACTION THAT RESULTS IN THE INTERFERENCE, DISRUPTION, SEIZURE, DAMAGING, OR DESTRUCTION OF UNMANNED AIRCRAFT DEEMED TO POSE A CREDIBLE SAFETY OR SECURITY THREAT TO PROTECTED PERSONNEL, FACILITIES, OR ASSETS. THE DEPARTMENT OF DEFENSE (DOD) AND UNITED STATES COAST GUARD (USCG) MAY TAKE SECURITY ACTION THAT RESULTS IN THE INTERFERENCE, DISRUPTION, SEIZURE, DAMAGING, OR DESTRUCTION OF UNMANNED AIRCRAFT CONSIDERED TO POSE A SAFETY OR SECURITY THREAT TO PROTECTED DOD OR USCG ASSETS. PURSUANT TO 14 C.F.R. SECTION 99.7, SPECIAL SECURITY INSTRUCTIONS SECURITY..SPECIAL SECURITY INSTRUCTIONS FOR UNMANNED (SSI), ALL UNMANNED AIRCRAFT ARE PROHIBITED FROM FLYING WITHIN A STAND-OFF DISTANCE OF 3000FT LATERALLY FROM AND 1000FT ABOVE A UNITED STATES NAVY (USN) OR USCG OPERATED VESSEL WHEN OPERATING WITHIN THE DEFINED AIRSPACE. THE AIRSPACE IN WHICH UAS OPERATIONS MUST COMPLY WITH THIS SSI IS DEFINED AS THE AIRSPACE, SFC-2000FT MSL, GENERALLY OVERLYING: 1) THE PORTION THE HOOD CANAL AND STRAIT OF JUAN DE FUCA EXTENDING FROM NAVAL BASE KITSAP NEAR BREMERTON, WA, TO THE PACIFIC; AND 2) THE PORTION OF THE CUMBERLAND SOUND EXTENDING FROM NAVAL SUBMARINE BASE KINGS BAY NEAR ST. MARYS, GA, TO THE ATLANTIC. THE AIRSPACE IN WHICH THIS SSI APPLIES IS VISUALLY DEPICTED AND GEOSPATIALLY DEFINED ON THE FOLLOWING FAA WEBSITE: [HTTPS://UDDS-FAA.OPENDATA.ARCGIS.COM](https://UDDS-FAA.OPENDATA.ARCGIS.COM). UAS OPERATORS NEEDING TO OPERATE IN THE DEFINED AIRSPACE IN CLOSE PROXIMITY TO USN OR USCG VESSELS FOR OVERRIDING REASONS OF PUBLIC INTEREST OR NECESSITY (SUCH AS IN DIRECT SUPPORT OF AN ACTIVE NATIONAL DEFENSE, HOMELAND SECURITY, LAW ENFORCEMENT, FIREFIGHTING, SEARCH AND RESCUE, OR DISASTER RESPONSE MISSION) MUST COORDINATE AND OBTAIN ADVANCE AUTHORIZATION FROM THE APPROPRIATE DOD OR USCG POINT OF CONTACT IDENTIFIED IN THE FOLLOWING FAA WEBSITE: [SECURITY..SPECIAL SECURITY INSTRUCTIONS FOR UNMANNED HTTPS://UDDS-FAA.OPENDATA.ARCGIS.COM](https://UDDS-FAA.OPENDATA.ARCGIS.COM). OPERATORS UNABLE TO SUCCESSFULLY COORDINATE WITH THESE DOD OR USCG POINTS OF CONTACT MAY CONTACT THE FAA SYSTEM OPERATIONS SUPPORT CENTER (SOSC) AT (202) 267-8276 FOR FURTHER ASSISTANCE. IF YOU HAVE GENERAL QUESTIONS REGARDING UAS OPERATIONS, PLEASE REFER TO THE FOLLOWING FAA WEBSITE: WWW.FAA.GOV/UAS/CONTACT; OR CONTACT THE FAA VIA EMAIL AT UASHELP@FAA.GOV OR PHONE AT (844) FLY-MY-UA. IF YOU HAVE QUESTIONS REGARDING THESE UAS SSI, PLEASE REFER TO THE FOLLOWING FAA WEBSITE:[Page 15 of 75 \(TOC\)](https://UDDS-</p></div><div data-bbox=)

FAA.OPENDATA.ARCGIS.COM; OR CONTACT THE FAAS SOSC AT (202)267-8276. 202110291430-202310291430

IFDC 1/5318 FDC SECURITY..SPECIAL SECURITY INSTRUCTIONS FOR UNMANNED AIRCRAFT SYSTEM (UAS) OPERATIONS WITHIN AND IN THE VICINITY OF AIRSPACE OVERLYING THE TERRITORIAL AND NAVIGABLE WATERS OF THE UNITED STATES OF AMERICA (USA). PURSUANT TO 49 USC SECTION 40103(B)(3), THE FAA CLASSIFIES THE AIRSPACE DEFINED IN THIS NOTAM AND IN FURTHER DETAIL BY THE FAA WEBSITE IDENTIFIED BELOW AS 'NATIONAL DEFENSE AIRSPACE'. OPERATORS WHO DO NOT COMPLY WITH THE FOLLOWING PROCEDURES MAY FACE THE FOLLOWING ENFORCEMENT ACTIONS: THE UNITED STATES GOVERNMENT MAY PURSUE CRIMINAL CHARGES, INCLUDING CHARGES UNDER 49 USC SECTION 46307; AND THE FAA MAY TAKE ADMINISTRATIVE ACTION, INCLUDING IMPOSING CIVIL PENALTIES AND REVOKING FAA CERTIFICATES OR AUTHORIZATIONS TO OPERATE UNDER TITLE 49 USC SECTIONS 44709 AND 46301. IN ADDITION, PURSUANT TO 10 USC SECTION 130I, THE DEPARTMENT OF DEFENSE (DOD) MAY TAKE SECURITY ACTION THAT RESULTS IN THE INTERFERENCE, DISRUPTION, SEIZURE, DAMAGING, OR DESTRUCTION OF UNMANNED AIRCRAFT CONSIDERED TO POSE A SAFETY OR SECURITY THREAT TO PROTECTED DOD ASSETS. SECURITY..SPECIAL SECURITY INSTRUCTIONS FOR UNMANNED PURSUANT TO 14 CFR SECTION 99.7, SPECIAL SECURITY INSTRUCTIONS (SSI), ALL UNMANNED AIRCRAFT ARE PROHIBITED FROM FLYING WITHIN A STAND-OFF DISTANCE OF 3000FT LATERALLY AND 1000FT ABOVE ANY U.S. NAVY (USN) VESSEL OPERATING, TRANSITING, OR AT PORT WITHIN THE TERRITORIAL WATERS AND/OR NAVIGABLE WATERS OF THE USA. THE AIRSPACE IN WHICH UAS OPERATIONS MUST COMPLY WITH THIS SSI IS DEFINED AS THE AIRSPACE, SFC-2000FT MSL, ABOVE THE TERRITORIAL AND NAVIGABLE WATERS OF THE USA, INCLUDING PORTS, ANCHORAGES AND ADJACENT LAND. THE TERRITORIAL WATERS OVER WHICH THIS SSI APPLIES ARE VISUALLY DEPICTED AND GEOSPATIALLY DEFINED ON THE FOLLOWING FAA WEBSITE: [HTTPS://UDDS-FAA.OPENDATA.ARCGIS.COM](https://UDDS-FAA.OPENDATA.ARCGIS.COM). NAVIGABLE WATERS OF THE USA ARE DEFINED BY 33 CFR PART 329. ADDITIONAL SECURITY-RELATED UAS RESTRICTIONS ARE DEPICTED ON [HTTPS://UDDS-FAA.OPENDATA.ARCGIS.COM](https://UDDS-FAA.OPENDATA.ARCGIS.COM). UAS OPERATORS NEEDING TO OPERATE IN THE DEFINED AIRSPACE IN CLOSE PROXIMITY TO USN VESSELS OPERATING IN TERRITORIAL AND NAVIGABLE WATERS OF THE USA FOR OVERRIDING REASONS OF PUBLIC INTEREST OR NECESSITY (SUCH AS IN SECURITY..SPECIAL SECURITY INSTRUCTIONS FOR UNMANNED DIRECT SUPPORT OF AN ACTIVE NATIONAL DEFENSE, HOMELAND SECURITY, LAW ENFORCEMENT, FIREFIGHTING, SEARCH AND RESCUE, OR DISASTER RESPONSE MISSION; OR COMMERCIAL ACTIVITY) MUST COORDINATE AND OBTAIN ADVANCE AUTHORIZATION FROM THE APPROPRIATE DOD/USN POINT OF CONTACT IDENTIFIED IN THE FOLLOWING FAA WEBSITE: [HTTPS://UDDS-FAA.OPENDATA.ARCGIS.COM](https://UDDS-FAA.OPENDATA.ARCGIS.COM). OPERATORS UNABLE TO SUCCESSFULLY COORDINATE WITH THESE DOD OR USN POINTS OF CONTACT MAY CONTACT THE FAA SYSTEM OPERATIONS SUPPORT CENTER (SOSC) AT (202) 267-8276 FOR FURTHER ASSISTANCE. IF YOU HAVE GENERAL QUESTIONS REGARDING UAS OPERATIONS, PLEASE REFER TO WWW.FAA.GOV/UAS/CONTACT; OR CONTACT THE FAA VIA EMAIL AT UASHELP@FAA.GOV OR PHONE AT (844) FLY-MY-UA. IF YOU HAVE QUESTIONS REGARDING THIS UAS-SPECIFIC SSI, PLEASE REFER TO THE FOLLOWING FAA WEBSITE: [HTTPS://UDDS-FAA.OPENDATA.ARCGIS.COM](https://UDDS-FAA.OPENDATA.ARCGIS.COM); OR CONTACT THE FAA SOSC AT (202) 267-8276. 202105131600-202305201400

IFDC 1/4156 FDC SPECIAL NOTICE...UNMANNED AIRCRAFT SYSTEM (UAS) OPERATORS ARE STRONGLY ADVISED TO USE CAUTION WHEN OPERATING WITHIN 1/4NM INLAND OF THE U.S./MEXICO BORDER PORTION OF THE CONTIGUOUS UNITED STATES AIR DEFENSE IDENTIFICATION ZONE (ADIZ) AS DEFINED BY 14 CFR 99.43 DUE TO ONGOING HOMELAND SECURITY (DHS), DEPARTMENT OF JUSTICE (DOJ) AND DEPARTMENT OF

DEFENSE (DOD) OPERATIONS. OPERATORS WHO INTERFERE WITH OR ARE DEEMED A THREAT TO SUCH OPERATIONS MAY BE MITIGATED PURSUANT TO 10 U.S.C. SECTION 130I AND 6 U.S.C. SECTION 124N. MITIGATION MAY RESULT IN THE INTERFERENCE, INTERCEPTION, SEIZURE, DAMAGING, OR DESTRUCTION OF UNMANNED AIRCRAFT DEEMED TO POSE A CREDIBLE SAFETY OR SECURITY THREAT TO PROTECTED PERSONNEL, FACILITIES, OR ASSETS. 202106161330-PERM

!FDC 1/3531 FDC SPECIAL NOTICE OF PUBLIC HEALTH REQUIREMENT FOR ALL AIR PASSENGERS ENTERING THE UNITED STATES (U.S.) AND ITS TERRITORIES. ALL AIR CARRIERS AND OTHER AIRCRAFT OPERATORS DEPARTING A FOREIGN COUNTRY INTENDING TO LAND IN THE U.S. OR A U.S. TERRITORY ARE ADVISED THE U.S. CENTERS FOR DISEASE CONTROL AND PREVENTION (CDC) ISSUED AN ORDER, EFFECTIVE 26 JAN 2021, PROHIBITING THE EMBARKATION OF ANY AIR PASSENGER ON A FLIGHT TO THE U.S. FROM A FOREIGN COUNTRY UNLESS THE PASSENGER, IN ACCORDANCE WITH THE SPECIFIC TERMS OF THE CDC ORDER, PRESENTS DOCUMENTATION OF: 1) A NEGATIVE RESULT FOR A PRE-DEPARTURE TEST FOR SARS-COV-2 (THE VIRUS THAT CAUSES COVID-19) TAKEN NO MORE THAN 3 DAYS IN ADVANCE OF DEPARTURE; OR 2) RECOVERY FROM COVID-19 WITHIN THE PREVIOUS 3 MONTHS OR AS SPECIFIED IN CDC GUIDANCE. EFFECTIVE IMMEDIATELY, ALL AFFECTED OPERATORS ARE STRONGLY ENCOURAGED TO FAMILIARIZE THEMSELVES WITH THIS CDC ORDER, WHICH PROVIDES IMPORTANT DETAILS, INCLUDING INFO ON: APPLICABILITY; EXEMPTIONS; CRITERIA OF A QUALIFYING TEST; REQUIREMENTS FOR DOCUMENTATION OF RECOVERY, INCLUDING A POSITIVE TEST RESULT FOR SARS COV-2 AND CONFIRMATION FROM A LICENSED HEALTH CARE PROVIDER OR HEALTH OFFICIAL THAT THE INDIVIDUAL IS CLEARED TO TRAVEL; PASSENGER SPECIAL NOTICE OF PUBLIC HEALTH REQUIREMENT FOR ALL ATTESTATIONS; AND COMPLIANCE IMPLEMENTATION, INCLUDING REQUIREMENTS LEVIED DIRECTLY ON OPERATORS. THIS CDC ORDER AND A LINK TO FAQs MAY BE FOUND AT: [HTTPS://WWW.CDC.GOV/QUARANTINE/FR-PROOF-NEGATIVE-TEST.HTML](https://www.cdc.gov/quarantine/fr-proof-negative-test.html). NON-URGENT QUESTIONS ABOUT THE CDC ORDER MAY BE REFERRED TO THE CDC AT (800) 232-4636. URGENT QUESTIONS ABOUT THE CDC ORDER MAY BE REFERRED TO THE CDC EMERGENCY OPERATIONS CENTER AT (770) 488-7100. OPERATORS SHOULD ALSO REVIEW FAA SAFO 20009, AS DISCUSSED IN THE CDC ORDER. OTHER QUESTIONS MAY BE REFERRED TO THE FAA WASHINGTON OPERATIONS CENTER AT (202) 267-3333. THE FAA IS ISSUING THIS NOTAM IN SUPPORT OF EXTRAORDINARY PUBLIC HEALTH MEASURES IN THE FACE OF A GLOBAL PANDEMIC. 202102121830-PERM

!FDC 1/3379 FDC ..SPECIAL NOTICE.. GA AND BUSINESS AVIATION ACFT ARE PROHIBITED FM USING EN ROUTE CPDLC EXC APPROVED TRIAL PARTICIPANTS. CPDLC DEP CLR OPS ARE STILL PERMITTED. ALL GA AND BUSINESS ACFT, EXC TRIAL PARTICIPANTS, MUST MODIFY FLT PLAN FIELD 18 DATA CODE TO REMOVE EN ROUTE CPDLC IMMEDIATELY. FURTHER INFO CTC DCIT -AT- L3HARRIS.COM 202109271400-202209262359

!FDC 1/0488 FDC SECURITY..SPECIAL SECURITY INSTRUCTIONS FOR UNMANNED AIRCRAFT SYSTEM (UAS) OPERATIONS FOR MULTIPLE LOCATIONS NATIONWIDE. THIS NOTAM REPLACES NOTAM FDC 0/5116 TO PROVIDE UPDATED INSTRUCTIONS. PURSUANT TO 49 U.S.C. SECTION 40103(B)(3), THE FAA CLASSIFIES THE AIRSPACE DEFINED IN THIS NOTAM AND IN FURTHER DETAIL AT THE FAA WEBSITE IDENTIFIED BELOW AS 'NATIONAL DEFENSE AIRSPACE'. OPERATORS WHO DO NOT COMPLY WITH THE FOLLOWING PROCEDURES MAY FACE THE FOLLOWING ENFORCEMENT ACTIONS: THE UNITED STATES GOVERNMENT MAY PURSUE CRIMINAL CHARGES, INCLUDING CHARGES UNDER 49 U.S.C. SECTION 46307; AND THE FAA MAY TAKE ADMINISTRATIVE ACTION, INCLUDING IMPOSING CIVIL PENALTIES AND REVOKING FAA CERTIFICATES OR AUTHORIZATIONS TO OPERATE UNDER TITLE 49 U.S.C. SECTIONS 44709 AND 46301. IN ADDITION, PURSUANT

TO 10 U.S.C. SECTION 130I, 50 U.S.C. SECTION 2661, AND 6 U.S.C. SECTION 124N, THE DEPARTMENT OF DEFENSE (DOD), DEPARTMENT OF ENERGY (DOE), DEPARTMENT OF HOMELAND SECURITY (DHS), OR DEPARTMENT OF JUSTICE (DOJ), RESPECTIVELY , MAY TAKE SECURITY ACTION AT OR IN THE VICINITY OF SPECIFIC LOCATIONS PRE-COORDINATED WITH THE FAA WITHIN A SUBSET OF THE DEFINED AIRSPACE, OR IN SECURITY..SPECIAL SECURITY INSTRUCTIONS FOR UNMANNED RESTRICTED OR PROHIBITED AIRSPACE ADJACENT TO SUCH LOCATIONS, THAT RESULTS IN THE INTERFERENCE, DISRUPTION, SEIZURE, DAMAGING, OR DESTRUCTION OF UNMANNED AIRCRAFT CONSIDERED TO POSE A SAFETY OR SECURITY THREAT TO FACILITIES OR ASSETS. PURSUANT TO 14 C.F.R. SECTION 99.7, SPECIAL SECURITY INSTRUCTIONS (SSI), ALL UAS FLIGHT OPERATIONS ARE PROHIBITED: WITHIN THE DEFINED AIRSPACE OVER SELECT NATIONAL SECURITY SENSITIVE LOCATIONS EXCEPT AS PROVIDED FOR BELOW. REFER TO THE FOLLOWING FAA WEBSITE: [HTTPS://UDDS-FAA.OPENDATA.ARCGIS.COM](https://udds-faa.opendata.arcgis.com) FOR: A LIST OF THESE SELECTED LOCATIONS AND FACILITIES, AND VISUAL DEPICTIONS, ALTITUDES, AND GEOSPATIAL DEFINITIONS OF THE OVERLYING AIRSPACE IN WHICH UAS OPERATIONS ARE PROHIBITED; A LIST OF A SPECIFIC SUBSET OF LOCATIONS AND FACILITIES, AND VISUAL DEPICTIONS, ALTITUDES, AND GEOSPATIAL DEFINITIONS OF THE OVERLYING AIRSPACE IN WHICH NON-COMPLIANT UAS OPERATIONS MAY BE SUBJECT TO THE SECURITY ACTION CITED ABOVE; DESIGNATED FACILITY CONTACTS, WHICH MAY BE CONTACTED BY UAS OPERATORS NEEDING TO OPERATE IN THE DEFINED AIRSPACE FOR OVERRIDING SECURITY..SPECIAL SECURITY INSTRUCTIONS FOR UNMANNED REASONS OF PUBLIC INTEREST OR NECESSITY (SUCH AS IN DIRECT SUPPORT OF AN ACTIVE NATIONAL DEFENSE, HOMELAND SECURITY, LAW ENFORCEMENT, FIREFIGHTING, SEARCH AND RESCUE, OR DISASTER RESPONSE MISSION; OR COMMERCIAL ACTIVITY); AND OTHER IMPORTANT INFORMATION, INCLUDING THE TIMES IN WHICH THE SSI ARE IN EFFECT. THE SSI APPLIED TO THE DEFINED AIRSPACE ARE CONTINUOUS UNLESS OTHERWISE INDICATED BY THE FAA'S UDDS WEBSITE. SOME SSI ARE ONLY IN EFFECT DURING RECURRING INTERMITTENT PERIODS SPECIFIED BY THE FAA IN THE UDDS WEBSITE. OPERATORS ARE URGED TO CHECK THIS FAA WEBSITE FREQUENTLY BEFORE AND DURING UAS FLIGHTS, ESPECIALLY WHEN OPERATING IN THE VICINITY OF OR WITHIN THE DEFINED AIRSPACE TO WHICH RECURRING INTERMITTENT SSI ARE APPLIED. SOME OF THE DEFINED SSI AIRSPACE MAY BE NEAR OR ADJACENT TO SPECIAL USE AIRSPACE (SUA), INCLUDING PROHIBITED AREAS AND RESTRICTED AREAS ESTABLISHED PURSUANT TO 14 C.F.R. PART 73. OPERATORS MUST MAINTAIN FAMILIARITY AND COMPLY WITH SUA REQUIREMENTS. UAS OPERATIONS ARE AUTHORIZED WITHIN THE DEFINED SSI AIRSPACE IF IN COMPLIANCE WITH THE REQUIREMENTS LISTED BELOW AND THE UAS FLIGHT SECURITY..SPECIAL SECURITY INSTRUCTIONS FOR UNMANNED OPERATION COMPLIES WITH ALL OTHER APPLICABLE FEDERAL AVIATION REGULATIONS: THE UAS FLIGHT OPERATION HAS BEEN PRE-APPROVED BY THE DESIGNATED FACILITY CONTACT BASED ON CRITERIA ESTABLISHED BY THE SPONSORING FEDERAL AGENCY IN COORDINATION WITH THE FAA; OR IF THE UAS FLIGHT OPERATION IS CONDUCTED IN DIRECT SUPPORT OF AN ACTIVE NATIONAL DEFENSE, HOMELAND SECURITY, LAW ENFORCEMENT, FIREFIGHTING, SEARCH AND RESCUE, OR DISASTER RESPONSE MISSION, AND PRIOR NOTIFICATION HAS BEEN PROVIDED TO THE DESIGNATED FACILITY CONTACT; OR IF THE UAS FLIGHT OPERATION IS CONDUCTED IN DIRECT SUPPORT OF A SIGNIFICANT AND URGENT GOVERNMENTAL INTEREST AND IS APPROVED BY THE FAA'S SYSTEM OPERATIONS SUPPORT CENTER (SOSC) IN ADVANCE OF ENTERING THE DEFINED SSI AIRSPACE. OPERATORS UNABLE TO SUCCESSFULLY COORDINATE WITH THE DESIGNATED FACILITY CONTACTS MAY CONTACT THE FAA SYSTEM OPERATIONS SUPPORT CENTER (SOSC) AT (202) 267-8276 FOR FURTHER ASSISTANCE. 202109021035-202309011159

IFDC 0/0367 FDC SECURITY SPECIAL SECURITY INSTRUCTIONS (SSI) FOR SELECT SPORTING EVENTS. THIS

NOTAM REPLACES FDC NOTAM 7/4319 TO CLARIFY ATC AUTHORIZATION OF TRANSITING FLIGHTS. THIS NOTAM IMPLEMENTS SECTION 352 OF PUBLIC LAW 108-7 AS AMENDED BY SECTION 521 OF PUBLIC LAW 108-199. PURSUANT TO 49 USC 40103(B)(3), THE FEDERAL AVIATION ADMINISTRATION (FAA) CLASSIFIES THE AIRSPACE DEFINED IN THIS NOTAM AS 'NATIONAL DEFENSE AIRSPACE'. PILOTS WHO DO NOT ADHERE TO THE FOLLOWING PROCEDURES MAY BE INTERCEPTED, DETAINED AND INTERVIEWED BY LAW ENFORCEMENT/SECURITY PERSONNEL. ANY OF THE FOLLOWING ADDITIONAL ACTIONS MAY ALSO BE TAKEN AGAINST A PILOT WHO DOES NOT COMPLY WITH THE REQUIREMENTS OR ANY SPECIAL INSTRUCTIONS OR PROCEDURES ANNOUNCED IN THIS NOTAM: A) THE FAA MAY TAKE ADMINISTRATIVE ACTION, INCLUDING IMPOSING CIVIL PENALTIES AND THE SUSPENSION OR REVOCATION OF AIRMEN CERTIFICATES; OR B) THE UNITED STATES GOVERNMENT MAY PURSUE CRIMINAL CHARGES, INCLUDING CHARGES UNDER TITLE 49 OF THE UNITED STATES CODE, SECTION 46307; OR C) THE UNITED STATES GOVERNMENT MAY USE DEADLY FORCE AGAINST THE AIRBORNE AIRCRAFT, IF IT IS DETERMINED THAT THE AIRCRAFT POSES AN IMMEDIATE SECURITY THREAT.

SECTION I. STADIUM OR SPORTS EVENTS: PURSUANT TO TITLE 14 CFR SECTION 99.7, SPECIAL SECURITY INSTRUCTIONS, ALL MANNED AND UNMANNED SPECIAL SECURITY INSTRUCTIONS AIRCRAFT OPERATIONS ARE PROHIBITED EXCEPT AS SPECIFIED BELOW WITHIN AN AREA DEFINED AS: 3 NMR OF A QUALIFYING STADIUM OR OTHER SPORTING VENUE HOSTING A QUALIFYING EVENT UP TO AND INCLUDING 3000FT AGL. QUALIFYING LOCATIONS AND EVENTS ARE DEFINED AS ANY STADIUM OR OTHER SPORTING VENUE HAVING A SEATING CAPACITY OF 30,000 OR MORE WHERE: A. A REGULAR OR POST SEASON MAJOR LEAGUE BASEBALL, NATIONAL FOOTBALL LEAGUE, OR NCAA DIVISION ONE FOOTBALL GAME IS OCCURRING; OR B. A NASCAR CUP, INDY CAR, OR CHAMP SERIES RACE IS OCCURRING, EXCLUDING QUALIFYING AND PRE-RACE EVENTS. THIS FLIGHT PROHIBITION IS IN EFFECT ONE HOUR BEFORE THE SCHEDULED START UNTIL ONE HOUR AFTER THE END OF A QUALIFYING EVENT.

SECTION II. OPERATING REQUIREMENTS (BASIC): THIS FLIGHT PROHIBITION APPLIES TO ALL MANNED AND UNMANNED AIRCRAFT OPERATIONS (INCLUDING TRAINING, PARACHUTE JUMPING, AND MODEL AIRCRAFT FLIGHTS) UNLESS THE AIRCRAFT OPERATOR MEETS AT LEAST ONE OF THE FOLLOWING REQUIREMENTS: A. THE AIRCRAFT OPERATION HAS BEEN AUTHORIZED BY ATC FOR OPERATIONAL OR SAFETY PURPOSES, INCLUDING AUTHORIZATION OF FLIGHTS SPECIFICALLY ARRIVING AT OR DEPARTING FROM AN AIRPORT DESIGNATED BY ATC USING STANDARD ATC PROCEDURES AND ROUTES; B. THE AIRCRAFT OPERATION IS BEING CONDUCTED FOR OPERATIONAL, SAFETY, OR SECURITY PURPOSES SPECIAL SECURITY INSTRUCTIONS SUPPORTING THE QUALIFYING EVENT, AND IS AUTHORIZED BY AN AIRSPACE SECURITY WAIVER APPROVED BY THE FAA; C. THE AIRCRAFT OPERATION IS ENABLING BROADCAST COVERAGE FOR THE BROADCAST RIGHTS HOLDER FOR THE QUALIFYING EVENT, AND IS AUTHORIZED BY AN AIRSPACE SECURITY WAIVER APPROVED BY THE FAA; D. THE AIRCRAFT OPERATION HAS BEEN AUTHORIZED BY ATC FOR NATIONAL SECURITY, HOMELAND SECURITY, LAW ENFORCEMENT, OR AIR AMBULANCE PURPOSES;

SECTION III. RESOURCES: A. PILOTS OPERATING IN THE DEFINED AIRSPACE ARE REMINDED THAT AN FAA AIRSPACE SECURITY WAIVER DOES NOT RELIEVE OPERATORS FROM OBTAINING ALL OTHER NECESSARY AUTHORIZATIONS, INCLUDING THOSE SPECIFIC TO FLIGHTS OVER EVENTS HELD IN STADIUMS AND OTHER SPORTING VENUES, AND COMPLYING WITH ALL APPLICABLE FEDERAL AVIATION REGULATIONS. B. PILOTS MUST CONTINUOUSLY SQUAWK AN ATC-ASSIGNED BEACON CODE AND MAINTAIN 2-WAY RADIO CONTACT WITH ATC WHILE OPERATING IN THE DEFINED AIRSPACE. C. UAS OPERATORS WHO DO NOT COMPLY WITH APPLICABLE AIRSPACE RESTRICTIONS ARE WARNED THAT PURSUANT TO 10 U.S.C. SECTION 130I AND 6 U.S.C. SECTION 124N, THE DEPARTMENT OF DEFENSE (DOD), THE DEPARTMENT OF HOMELAND SECURITY (DHS) OR THE DEPARTMENT OF JUSTICE (DOJ)

MAY TAKE SECURITY ACTION THAT RESULTS IN THE INTERFERENCE, DISRUPTION, SEIZURE, DAMAGING, OR SPECIAL SECURITY INSTRUCTIONS DESTRUCTION OF UNMANNED AIRCRAFT DEEMED TO POSE A CREDIBLE SAFETY OR SECURITY THREAT TO PROTECTED PERSONNEL, FACILITIES, OR ASSETS. D. ALL PREVIOUSLY ISSUED WAIVERS TO FDC NOTAM 7/4319 REMAIN VALID UNTIL THE SPECIFIED END DATE BUT NOT TO EXCEED 90 DAYS FOLLOWING THE EFFECTIVE DATE OF THIS NOTAM. INFORMATION ABOUT AIRSPACE SECURITY WAIVER APPLICATIONS AND TSA SECURITY AUTHORIZATIONS CAN BE FOUND AT [HTTP://WWW.TSA.GOV/STAKEHOLDERS/AIRSPACE-WAIVERS-0](http://www.tsa.gov/stakeholders/airspace-waivers-0) OR BY CALLING TSA AT 571-227-2071. E. SUBMIT REQUESTS FOR FAA AIRSPACE WAIVERS AT [HTTPS://WAIVERS.FAA.GOV](https://waivers.faa.gov). F. FAA RECOMMENDS THAT ALL AIRCRAFT OPERATORS CHECK NOTAMS FREQUENTLY FOR POSSIBLE CHANGES TO THIS TFR PRIOR TO OPERATIONS WITHIN THIS REGION AT [HTTP://NOTAMS.AIM.FAA.GOV](http://notams.aim.faa.gov) AND SELECT NOTAM SEARCH. G. THE SYSTEM OPERATIONS SUPPORT CENTER (SOSC) IS THE POINT OF CONTACT AND COORDINATION FACILITY FOR ANY QUESTIONS REGARDING THIS NOTAM AND ARE AVAILABLE DAILY FROM 0700-2300 EASTERN, PHONE 202-267-8276. 202001150001-PERM

IFDC 8/2435 FDC ... SPECIAL NOTICE ... PILOTS ARE REMINDED THAT THERE ARE INCREASED SECURITY MEASURES IN PLACE FOR AIRCRAFT ENTERING DOMESTIC AIRSPACE, INCLUDING THOSE ENTERING FLORIDA COASTAL WATERS. ALL PILOTS OF VFR AIRCRAFT ARE REQUIRED TO FILE A DEFENSE VISUAL FLIGHT RULES (DVFR) FLIGHT PLAN PRIOR TO ENTRY INTO THE AIR DEFENSE IDENTIFICATION ZONE (ADIZ) IN ACCORDANCE WITH CFR 99 TITLE 14 CHAPTER 1 PART 99 SECURITY CONTROL OF AIR TRAFFIC, SECTIONS 99.1 THROUGH 99.49. THE PILOT MUST ACTIVATE THE DVFR FLIGHT PLAN WITH U.S. FLIGHT SERVICE AND SET THE AIRCRAFT TRANSPONDER TO THE ASSIGNED DISCRETE BEACON CODE PRIOR TO ENTERING THE ADIZ. FAILURE TO COMPLY WITH ALL DVFR PROCEDURES MAY RESULT IN THE AIRCRAFT BEING INTERCEPTED BY DEPARTMENT OF DEFENSE AIRCRAFT. 200806131828-PERM

IFDC 6/8818 FDC ...SPECIAL NOTICE...IN THE INTEREST OF NATIONAL SECURITY AND TO THE EXTENT PRACTICABLE, PILOTS AND UAS OPERATORS ARE STRONGLY ADVISED TO AVOID THE AIRSPACE ABOVE OR IN CLOSE PROXIMITY TO CRITICAL INFRASTRUCTURE AND OTHER SENSITIVE LOCATIONS SUCH AS POWER PLANTS (NUCLEAR, HYDRO-ELECTRIC, OR COAL), DAMS, REFINERIES, INDUSTRIAL COMPLEXES, MILITARY FACILITIES, CORRECTIONAL AND LAW ENFORCEMENT FACILITIES UNLESS OTHERWISE AUTHORIZED. PILOTS AND UAS OPERATORS SHOULD NOT CIRCLE AS TO LOITER IN THE VICINITY OVER THESE TYPES OF FACILITIES. 201603231538-PERM

IFDC 4/4386 FDC SPECIAL NOTICE... NATIONAL AIRSPACE SYSTEM INTERCEPT PROCEDURES. AVIATORS SHALL REVIEW THE FEDERAL AVIATION ADMINISTRATION AERONAUTICAL INFORMATION MANUAL (AIM) FOR INTERCEPTION PROCEDURES, CHAPTER 5, SECTION 6, PARAGRAPH 5-6-2. ALL AIRCRAFT OPERATING IN UNITED STATES NATIONAL AIRSPACE, IF CAPABLE, SHALL MAINTAIN A LISTENING WATCH ON VHF GUARD 121.5 OR UHF 243.0. IF AN AIRCRAFT IS INTERCEPTED BY U.S. MILITARY AIRCRAFT AND FLARES ARE DISPENSED, THE FOLLOWING PROCEDURES ARE TO BE FOLLOWED: FOLLOW THE INTERCEPT'S VISUAL SIGNALS, CONTACT AIR TRAFFIC CONTROL IMMEDIATELY ON THE LOCAL FREQUENCY OR ON VHF GUARD 121.5 OR UHF GUARD 243.0, AND COMPLY WITH THE INSTRUCTIONS GIVEN BY THE INTERCEPTING AIRCRAFT INCLUDING VISUAL SIGNALS IF UNABLE RADIO CONTACT. BE ADVISED THAT NONCOMPLIANCE MAY RESULT IN THE USE OF FORCE. 200405191412-PERM

State Department (KZZZ) NOTAMs:

IFDC 2/8783 KZZZ SECURITY...SPECIAL SECURITY INSTRUCTIONS (SSI) FOR IDENTIFICATION OF CIVIL AIRCRAFT

(ACFT) OPERATING INTO OR OUT OF THE UNITED STATES, INTO, WITHIN (WI), OR ACROSS THE UNITED STATES CONTIGUOUS AIR DEFENSE IDENTIFICATION ZONE (ADIZ). IN ADDITION TO THE REQUIREMENTS PRESCRIBED IN 14 CFR PART 99.13, TRANSPONDER ON REQUIREMENTS, THE FOLLOWING SPECIAL SECURITY REQUIREMENTS ARE IN EFFECT, PURSUANT TO 14 CFR SECTION 99.7, SSI, AND AGREEMENT BETWEEN THE FEDERAL AVIATION ADMINISTRATION (FAA), THE DEPARTMENT OF DEFENSE (DOD), AND THE DEPARTMENT OF HOMELAND SECURITY (DHS). THIS NOTAM CANCELS FDC NOTAM 0-9801, SSI FOR TRANSPONDER OPS OF CIVIL ACFT OPERATING INTO OR OUT OF THE UNITED STATES. A. UNLESS OTHERWISE AUTH BY THE FAA, CIVIL ACFT OPERATING INTO OR OUT OF THE UNITED STATES ACROSS THE CONTIGUOUS U.S. ADIZ, INTO THE CONTIGUOUS U.S. ADIZ, OR WI THE CONTIGUOUS U.S. ADIZ, MUST BE EQUIPPED WITH AN OPERABLE RADAR BEACON (BCN) TRANSPONDER AND THAT TRANSPONDER MUST BE TURNED ON AND SET TO REPLY ON THE DISCRETE BCN CODE ASSIGNED BY AIR TRAFFIC CONTROL (ATC) OR ISSUED BY FLIGHT SERVICE (FSS). USE OF BCN CODE 1200 IS NOT AUTHORIZED. USE OF THE UAT ANONYMITY MODE IS NOT AUTHORIZED. THE RADAR BCN TRANSPONDER MUST 9-ATOR-HQ-IFOS@FAA.GOV. SECURITY...SPECIAL SECURITY INSTRUCTIONS (SSI) FOR HAVE ALT REPORTING CAPABILITY. B. FOR AIR DEFENSE PURPOSES, AIRCRAFT EQUIPPED WITH AN OPERABLE 1090ES (DO-260B) ADS-B SYSTEM OPERATING OUTBOUND ACROSS THE CONTIGUOUS U.S. ADIZ MAY ALSO BE IDENTIFIED BY THE ICAO AIRCRAFT ADDRESS (OTHERWISE KNOWN AS THE AIRCRAFT MODE S CODE). THEREFORE, OUTBOUND AIRCRAFT USE OF A PRIVACY ICAO AIRCRAFT ADDRESS IS NOT AUTHORIZED. C. OUTBOUND VFR AIRCRAFT OPERATORS NOT FILING AN AUTOMATED FLIGHT PLAN MUST CONTACT FSS TO RECEIVE A DISCRETE BEACON CODE. D. ALL CIVIL ACFT THAT OPERATE IN ANY ADS-B OUT RULE AIRSPACE DESIGNATED BY 14 CFR 91.225 MUST MEET THE REQUIREMENTS OF THE ADS-B OUT RULE. NOTHING IN THIS NOTAM CHANGES OR ALTERS THOSE REQUIREMENTS IN ANY WAY. E. IF YOU HAVE QUESTIONS REGARDING THIS SSI, CONTACT THE FAA AT 9-ATOR-HQ-IFOS@FAA.GOV. 202202281915-PERM IFDC 2/0476 KZZZ SECURITY...SPECIAL SECURITY INSTRUCTIONS (SSI) PROHIBITION ON RUSSIAN FLIGHT OPERATIONS IN THE TERRITORIAL AIRSPACE OF THE U.S. PURSUANT TO 49 USC SECTIONS 40103 AND 40113(A), ALL RUSSIAN AIR CARRIERS AND COMMERCIAL OPERATORS, REGARDLESS OF THE STATE OF REGISTRY OF THE AIRCRAFT; ALL AIRCRAFT REGISTERED IN THE RUSSIAN FEDERATION; ALL RUSSIAN STATE AIRCRAFT, REGARDLESS OF THE STATE OF REGISTRY OF THE AIRCRAFT; AND ALL AIRCRAFT, REGARDLESS OF THE STATE OF REGISTRY, OWNED, CHARTERED, LEASED, OPERATED OR CONTROLLED BY, FOR, OR FOR THE BENEFIT OF, A RUSSIAN PERSON OR ENTITY IDENTIFIED BY THE INTERNATIONAL TRADE ADMINISTRATIONS CONSOLIDATED SCREENING LIST ([HTTPS://WWW.TRADE.GOV/CONSOLIDATED-SCREENING-LIST](https://www.trade.gov/consolidated-screening-list)) ARE PROHIBITED FROM OPERATING TO, FROM, WITHIN, OR THROUGH U.S. TERRITORIAL AIRSPACE, EXCEPT FOR AIRCRAFT ENGAGED IN HUMANITARIAN OR SAR OPERATIONS SPECIFICALLY AUTHORIZED BY THE FAA, STATE AIRCRAFT OPERATIONS GRANTED A DIPLOMATIC CLEARANCE BY THE U.S. DEPARTMENT OF STATE AND AIRCRAFT EXPERIENCING IN-FLIGHT EMERGENCIES. ALL EXCEPTED AIRCRAFT OPERATIONS UNDER THIS NOTAM MUST RECEIVE APPROPRIATE ECONOMIC AUTHORIZATION FROM THE U.S. DEPARTMENT OF TRANSPORTATION PRIOR TO CONDUCTING FLIGHT OPERATIONS TO, FROM, WITHIN, OR THROUGH SECURITY...SPECIAL SECURITY U.S. TERRITORIAL AIRSPACE. AIRCRAFT OPERATORS SUBJECT TO THIS NOTAM WHO DO NOT COMPLY WITH THESE INSTRUCTIONS MAY BE INTERCEPTED, AND THEIR PILOTS AND OTHER CREWMEMBERS DETAINED AND INTERVIEWED BY LAW ENFORCEMENT OR SECURITY PERSONNEL, AS APPROPRIATE. ALL PREVIOUSLY OBTAINED FAA AUTHORIZATIONS FOR AIRCRAFT AND OPERATIONS SUBJECT TO THIS NOTAM TO OPERATE IN U.S. TERRITORIAL AIRSPACE ARE REVOKED. OPERATORS SUBJECT TO THIS NOTAM WISHING TO OBTAIN AN FAA AUTHORIZATION TO OPERATE IN U.S. TERRITORIAL AIRSPACE

MUST SUBMIT A REQUEST TO THE FAA SYSTEM OPERATIONS SUPPORT CENTER (SOSC) AT 1-202-267-8276 OR EMAIL 9-ATOR-HQ-SOSC@FAA.GOV. REQUESTS FOR DOT ECONOMIC AUTHORIZATION MUST BE SUBMITTED TO THE U.S. DEPARTMENT OF TRANSPORTATION OFFICE OF INTERNATIONAL AVIATION AT SCHEDULEFILING@DOT.GOV. SFC-UNL 202205252359-202211222359

IFDC 1/5060 KZZZ SECURITY...SPECIAL SECURITY INSTRUCTIONS (SSI) CONCERNING NATIONAL SECURITY AND REQUIREMENTS FOR CIVIL AND FOREIGN STATE ACFT OPS INTO, WI, OR ACROSS UNITED STATES TERRITORIAL AIRSPACE. IN ACCORDANCE WITH 14 CODE OF FEDERAL REGULATIONS (CFR) 99.7, SPECIAL SECURITY INSTRUCTIONS (SSI), AND 49 USC 40103 AND 41703, IN ADDITION TO THE REQUIREMENTS PRESCRIBED IN 14 CFR PART 99, SECURITY CONTROL OF AIR TRAFFIC, THE AERONAUTICAL INFORMATION PUBLICATION (AIP) (PART II. ENROUTE, ENR 1.12) AND AERONAUTICAL INFORMATION MANUAL (AIM) (CHAPTER 5, SECTION 6) PRESCRIBE THE SSI PROCEDURES FOR CIVIL AND FOREIGN STATE ACFT OPS INTO, WI, OR ACROSS UNITED STATES TERRITORIAL AIRSPACE. 202109291637-PERM

International NOTAMs

All published NOTAMs are available in the [Notices to Airmen Publication \(NTAP\)](#).

Departure: None

Destination: None

En Route:

PHZH A0503/22 PHZH 20220614180000 20220614220000 Due to Air Traffic Control assigned airspace (MAY include any OR the following: Luna WEST), Honolulu arrivals FM the S should flight plan as follows: 1. E of 1580000W via A route on OR E of A line extending FM 100000N1580000W to 181500N1552800W to KOA V20 JULLE V21 HNL. 2. West of 158° West via A route on OR W of A line extending FM 100000N1580000W to CHEEM CARRP thence OPACA to HNL. Honolulu departures to the S should flight plan as follows: 1. E of 1580000W via MKK SID MKK V7 IAI thence A route on OR E of A line extending FM KOA to 181500N1552800W to 100000N1580000W. 2. West of 158° West via OPIHI SID CARRP thence via A route on OR W of A line extending FM CARRP CHEEM to 100000N1580000W. For more information contact Honolulu control facility TMU at (808) 840-6203 OR operations (808)840-6201. Surface - flight level 500, Jun 14, 2022 1800Z to Jun 14, 2022 2200Z

PHZH A0500/22 PHZH 20220614220000 20220615020000 Due to Air Traffic Control assigned airspace (MAY include any OR the following: Luna WEST), Honolulu arrivals FM the S should flight plan as follows: 1. E of 1580000W via A route on OR E of A line extending FM 100000N1580000W to 181500N1552800W to KOA V20 JULLE V21 HNL. 2. West of 158° West via A route on OR W of A line extending FM 100000N1580000W to CHEEM CARRP thence OPACA to HNL. Honolulu departures to the S should flight plan as follows: 1. E of 1580000W via MKK SID MKK V7 IAI thence A route on OR E of A line extending FM KOA to 181500N1552800W to 100000N1580000W. 2. West of 158° West via OPIHI SID CARRP thence via A route on OR W of A line extending FM CARRP CHEEM to 100000N1580000W. For more information contact Honolulu control facility TMU at (808) 840-6203 OR operations (808)840-6201. Surface - flight level 350, Jun 14, 2022 2200Z to Jun 15, 2022 0200Z

PHZH A0497/22 PHZH 20220614220000 20220615020000 Military operations WI Luna west Air Traffic Control assigned airspace WI an area defined as 190750N1591501W thence counter clockwise along the HNL150 NM arc to 185042N1582600W to 171755N1582600W to 173756N1591501W to Point of origin. IN the interest of safety all

non-participating aircraft are advise to avoid the area. IFR aircraft under Air Traffic Control jurisdiction Canada anticipate clear around area. Surface - flight level 350, Jun 14, 2022 2200Z to Jun 15, 2022 0200Z

PHZH A0496/22 PHZH 20220614180000 20220614220000 Military operations WI Luna west Air Traffic Control assigned airspace WI an area defined as 190750N1591501W thence counter clockwise along the HNL150 NM arc to 185042N1582600W to 171755N1582600W to 173756N1591501W to Point of origin. IN the interest of safety all non-participating aircraft are advise to avoid the area. IFR aircraft under Air Traffic Control jurisdiction Canada anticipate clear around area. Surface - flight level 500, Jun 14, 2022 1800Z to Jun 14, 2022 2200Z

PHZH A0494/22 PHZH 20220609180000 20220610000100 Due to Air Traffic Control assigned airspace (MAY include any of the following: MELA south, Honolulu arrival FM the S should flight plan as follows: 1. E of 1580000W via A route on OR E of A line extending FM 100000N1580000W to 173000N1551000W to 181500N1553300W to KOA thence via KOA V20 JULLE V21 HNL. 2. W of 1580000W via A route on OR W of A line extending FM 100000N1580000W to BARKR to ZUKEY thence OPACA to HNL. Honolulu departure to the S should flight plan as follows: 1. E of 1580000W via MKK V7 KOA thence A route on OR E extending FM KOA to 181500N1553300W to 173000N1551000W to 100000N1580000W. 2. W of 1580000W via OPIHI SID to CHOKO thence W of A line extending FM ZUKEY to CHOKO to BARKR to 100000N1580000W. For more INFOR contact Honolulu control facility TMU at 808-840-6203 OR operations at 808-840-6201. Surface - flight level 600, Jun 09, 2022 1800Z to Jun 10, 2022 0001Z

PHZH A0491/22 PHZH 20220609180000 20220610000100 Military operations will be conducted WI MELA south Air Traffic Control assigned airspace WI an area defined as 204800N1583100W to 204120N1581840W to 193922N1595552W to 195653N1592837W to Point of origin. IN the interest of safety all non-participating aircraft are advise to avoid the area. IFR traffic under Air Traffic Control jurisdiction should anticipate reroute around the area. Surface - flight level 600, Jun 09, 2022 1800Z to Jun 10, 2022 0001Z

PHZH A1108/21 PHZH 20210913022300 20220912235900 Volcanic active advisory for Kilauea volcano, HI 192419N1551652W. Pilots are advised to exercise extreme caution when operating near Kilauea volcano, and remain alert for possible explosive eruptions, ash, steam OR gas emissions, and report any sightings to Air Traffic Control immediately. Contact Honolulu control facility at TEL 808-840-6201 for additional information. Surface - unlimited, Sep 13, 2021 0223Z to Sep 12, 2022 2359Z

KZAK A2283/22 KZAK 20220608190000 20220609080000 (TDM TRK H Aug 19, 2206 0001Z Jun 08, 2022 1900Z Jun 09, 2022 0800Z BAART BARAZ BILLO 29° North 150° West 27° North 160° West 26° North 170° West 25° North 180° East 24° North 170° East 24° North 160° East 24° North 150° East 23° North 140° East TUNTO return to service/KSFO GNNRR BAART KLAX MCKEY LIBBO BRINY BAART TUNTO R595 SEDKU TUNTO IGURU remark/TRK H only available to aircraft landing RCTP OR south TRK I not available due to winds) Jun 08, 2022 1900Z to Jun 09, 2022 0800Z

KZAK A2282/22 KZAK 20220608190000 20220609080000 (TDM TRK F Aug 19, 2206 0001Z Jun 08, 2022 1900Z Jun 09, 2022 0800Z REDWD UNVER EDWIL 48° North 140° West 49° North 150° West 48° North 160° West 47° North 170° West 46° North 180° East 42° North 170° East 37° North 160° East 35° North 150° East MORAY return to service/KSFO GNNRR STINS AMAKR REDWD KLAX MCKEY LIBBO BRINY BOARS AMAKR REDWD MORAY OTR15 POVAL remark/0) Jun 08, 2022 1900Z to Jun 09, 2022 0800Z

KZAK A2281/22 KZAK 20220608190000 20220609080000 (TDM TRK E Aug 19, 2206 0001Z Jun 08, 2022 1900Z Jun 09, 2022 0800Z LINUZ NATTE ZANNING 50° North 140° West 51° North 150° West 50° North 160° West 49°

North 170° West 48° North 180° East 44° North 170° East 39° North 160° East 36° North 150° East SEALS return to service/KSFO GNNRR STINS AMAKR LINUZ KLAX MCKEY LIBBO BRINY BOARS AMAKR LINUZ SEALS OTR13 LAPIL remark/0) Jun 08, 2022 1900Z to Jun 09, 2022 0800Z

KZAK A2280/22 KZAK 20220608190000 20220609080000 (TDM TRK C Aug 19, 2206 0001Z Jun 08, 2022 1900Z Jun 09, 2022 0800Z ORNAI 52° North 140° West 53° North 150° West 52° North 160° West 50° North 170° West 49° North 180° East 47° North 170° East 43° North 160° East LEPKI return to service/CYVR UQQ ORNAI KSEA TOU FINGS ORNAI KPDX TOU FINGS ORNAI KSFO TOU FINGS ORNAI KLAX TOU FINGS ORNAI LEPKI OTR11 AVBET remark/0) Jun 08, 2022 1900Z to Jun 09, 2022 0800Z

KZAK A2279/22 KZAK 20220608190000 20220609080000 (TDM TRK A Aug 19, 2206 0001Z Jun 08, 2022 1900Z Jun 09, 2022 0800Z PUPPI CRESP 24° North 170° West 26° North 180° East 28° North 170° East 30° North 160° East 31° North 150° East TONIK return to service/PHNL KEOLA PUPPI TONIK G223 BEGAD remark/TRK B not available) Jun 08, 2022 1900Z to Jun 09, 2022 0800Z

KZAK A2271/22 KZAK 20220608050000 20220608210000 (TDM TRK J Aug 05, 2206 0001Z Jun 08, 2022 0500Z Jun 08, 2022 2100Z BAART BARAZ BILLO 30° North 150° West 28° North 160° West 26° North 170° West 25° North 180° East 24° North 170° East 24° North 160° East 23° North 150° East 22° North 140° East TUNTO return to service/KSFO GNNRR BAART KLAX MCKEY LIBBO BRINY BAART TUNTO R595 SEDKU TUNTO IGURU TUNTO gumbo remark/TRK K not available. File TRK J.) Jun 08, 2022 0500Z to Jun 08, 2022 2100Z

KZAK A2262/22 KZAK 20220610131500 20220610200000 The following restrictions are required due to ALTRV dust DEVIL and adjacent warning areas. Eastbound traffic on R585 estimating AUDIA between 1315Z and 2005Z should file CIVIT R465 CINNY to PIRAT. Westbound traffic on R576 estimating DINTY at OR above flight level 310 between 1335Z and 2030Z should file MCKEY to LIBBO to BRINY to BEBOP to BAART R464 BITTA. Eastbound traffic on R577 at OR above flight level 310 estimating ELKEY between 1315Z and 2005Z should file EBBER R577 ETECO to FOOTS R578 FICKY C1177 SXC. Eastbound traffic on R578 estimating FICKY between 1315Z and 2005Z should file EBBER R577 ETECO to FOOTS R578 FICKY C1177 SXC. This IS to reduce congestion on R578. Westbound traffic on R578 no restrictions. The temporary routes described above are for aircraft equipped with RNP-10 navigation systems OR better. All others should flight plan to avoid the airspace NOTAMED for ALTRV dust DEVIL by at least 50 nautical miles. Times listed above are based on the performance of turbojet aircraft only and slower aircraft should plan accordingly. Questions should be directed to the military operations specialist at 510-745-3334. Jun 10, 2022 1315Z to Jun 10, 2022 2000Z

KZAK A2261/22 KZAK 20220609151500 20220610023000 The following restrictions are required due to ALTRV dust DEVIL and adjacent warning areas. Eastbound traffic on R585 estimating AUDIA between 1515Z and 0205Z should file CIVIT R465 CINNY to PIRAT. Westbound traffic on R576 estimating DINTY at OR above flight level 310 between 1535Z and 0230Z should file MCKEY to LIBBO to BRINY to BEBOP to BAART R464 BITTA. Eastbound traffic on R577 at OR above flight level 310 estimating ELKEY between 1515Z and 0205Z should file EBBER R577 ETECO to FOOTS R578 FICKY C1177 SXC. Eastbound traffic on R578 estimating FICKY between 1515Z and 0205Z should file EBBER R577 ETECO to FOOTS R578 FICKY C1177 SXC. This IS to reduce congestion on R578. Westbound traffic on R578 no restrictions. The temporary routes described above are for aircraft equipped with RNP-10 navigation systems OR better. All others should flight plan to avoid the airspace NOTAMED for ALTRV dust DEVIL by at least 50 nautical miles. Times listed above are based on the performance of turbojet aircraft only and slower aircraft should plan accordingly. Questions should be directed to the military operations specialist at 510-745-3334. Jun 09, 2022 1515Z to Jun 10, 2022 0230Z

KZAK A2260/22 KZAK 20220615060000 20220623100000 The Republic of Korea has planned A rocket launch. Debris FM this launch will fall WI 2 areas. Area 1 IS an area defined as 213144N1284308E to 213952N1295538E to 192207N1301238E to 191359N1290112E to Point of origin. Area 2 IS an area defined as 113322N1293038E to 114308N1310911E to 070229N1313657E to 065244N1295942E to Point of origin. IN the interest of safety all non-participating aircraft are advised TOAVOID the NOTAMED areas. IFR aircraft under Air Traffic Control jurisdiction should anticipate clear around the NOTAMED areas. Surface - unlimited, daily 0600-1000, Jun 15, 2022 0600Z to Jun 23, 2022 1000Z

KZAK A2257/22 KZAK 20220606153700 20220618080000 PTRO airfield will be controlled by United States military air traffic controllers conducting positive and procedural control under FAA and International Civil Aviation Organization (ICAO) standards. Aircraft operating at OR below flight level 55 within 5 nautical miles of PTRO are required to contact KOROR tower on 123.6/234.575. Aircraft operating at OR below flight level 55 within 12 nautical miles of PALAU are required to contact KOROR arrival on 124.950/227.1 for VFR flight following and traffic advisories. The following approaches are available for military aircraft only: precision approach radar runway 09, Airport Surveillance Radar runway 09/27, TACAN runway 09/27. Contact arrival on 227.1 for clearances. For questions regarding this NOTAM, contact the marine air control squadron at 760-719-2251. Surface - 5,500 feet, Jun 06, 2022 1537Z to Jun 18, 2022 0800Z

KZAK A2110/22 KZAK 20220531140000 20220701060000 Due to aircraft maneuvering, the following areas are NOTAMED at the times indicated: SPEEDAIR north/central/south. SPEEDAIR north WI an area defined as 54° 10' North 140° 00' West to 53° 22' North 137° 00' West to 52° 43' North 135° 00' West to 51° 00' North 133° 45' West to 50° 45' North 133° 09' West to 50° 45' North 137° 17' West to 53° 15' North 140° 00' West to Point of origin. SPEEDAIR central WI an area defined as 50° 45' North 137° 17' West to 50° 45' North 133° 09' West to 48° 20' North 128° 00' West to 48° 21' North 130° 00' West to 48° 20' North 135° 00' West to Point of origin. SPEEDAIR south WI an area defined as 48° 20' North 135° 00' West to 48° 21' North 130° 00' West to 45° 50' North 128° 10' West to 45° 50' North 131° 00' West to Point of origin. IN the interest of safety all non-participating aircraft are advised to avoid the NOTAMED areas. IFR aircraft under Air Traffic Control jurisdiction should anticipate clearance around the NOTAMED areas. Flight level 055 - flight level 230, daily 1400-0600, May 31, 2022 1400Z to Jul 01, 2022 0600Z

KZAK A2008/22 KZAK 20220521000000 20220817235900 Attention aircraft OPR and dispatchers operating WI Oakland oceanic (KZAK) Flight Information Region. The following guidance covers requirements for filing user preferred routes associated with PACOTS. This guidance supersedes provisions contained IN the Pacific chart supplement and the Oakland oceanic Center (KZAK) Flight Information Region user preferred route guidance. This NOTAM IS issued IN conjunction with JCAB (JAPAN aviation civil BUREAU). Operations for use of user preferred route between Asia/southeast Asia and north America/Hawaii 1. OPR shall comply with the published guidance for flight planning user preferred routes associated with PACOTS IN the Fukuoka and Anchorage oceanic Flight Information Regions. (2) all eastbound PACOTS tracks have user preferred route procedure except PACOTS track 2. Eastbound aircraft crossing 160E between 1100 UTC and 1230 UTC FM Asia/southeast Asia to north America/Hawaii May flight plan A user preferred route that remains at least 50 nautical miles N OR S of PACOTS track 2. Eastbound aircraft crossing 160E between 1230 UTC and 1100 UTC FM Asia/southeast Asia to north America/Hawaii May flight plan A user preferred route without regard for PACOTS track 2. 3. Rules of OPR IN each airspaces for westbound user preferred route (1) all westbound PACOTS tracks have upper procedure except PACOTS track C and J. Westbound aircraft crossing 160E between 0230 UTC and 0600 UTC FM north America/Hawaii to Asia/southeast Asia May flight plan A user preferred route that remains at least 50 nautical miles N OR S of PACOTS track C. Westbound aircraft crossing 160E between

1500 UTC and 1800 UTC FM north America to Asia/southeast Asia May flight plan A user preferred route that remains at least 50 nautical miles N OR S of PACOTS track J. Westbound aircraft crossing 160E between 0600 UTC to 1500 UTC OR 1800 UTC to 0230 UTC FM north America/Hawaii to Asia/southeast Asia May flight plan A user preferred route without regard to other westbound PACOTS. 4. Others (1) the user preferred routes have the same priority for altitude assignment as aircraft on an optional PACOTS OR NOPAC track. There IS one exception, OPR which flight plan A user preferred route that IS not laterally separated FM an opposite direction PACOTS/NOPAC/user preferred route traffic flow will likely be restricted vertically while IN conflict with the major traffic flow. (2) the user preferred route must be planned to avoid military special use airspace when active. (3) other condition that May not allow the use of user preferred routes as follows: (A) OPR will be informed by NOTAM whenever A condition exists that does not allow for the use of user preferred routes WI Oakland oceanic Center (KZAK) Flight Information Region. These condition May include military operations, space vehicle launches OR adverse weather. Please forward any questions to the Oakland oceanic airspace and procedure office at TEL 510-745-3320 Monday-Friday 0700-1500 PST, outside of these hours email HOLLY.A.KING@FAA.Governor. May 21, 2022 0000Z to Aug 17, 2022 2359Z

KZAK A1218/12 KZAK 20120323195100 PERM QAFCl attention dispatchers and aircraft operators. Notice to flight crews, aircraft operators and dispatchers. All flights entering the Oakland oceanic Flight Information Region are required to advise Oakland Center of any changes to the navigation capabilities filed IN the original flight plan prior to entering oceanic airspace. Questions regarding this subject May be addressed to the Oakland oceanic supervisor at (510) 745-3342 OR the Oakland oceanic airspace and procedures office at (510) 745-3258/3548. Mar 23, 2012 1951Z-permanent

KICZ A0009/22 KICZ 20220226122200 20230226235900 Security..United states of America advisory for Mali those persons described IN paragraph A (APPLICABILITY) below should exercise caution when flying into, out of, within, OR over the territory and airspace of Mali at altitudes below flight level (FL) 260 due to A continuing fragile security situation, including ongoing fighting and extremist/militant activity. A. Applicability. This NOTAM applies to: all United States air carriers and commercial OPERATORS; all persons exercising the privileges of an airman certificate issued by the FAA, except such persons operating U.S.-Registered aircraft for A foreign air CARRIER; and all operators of civil aircraft registered IN the united states, except where the operator of such aircraft IS A foreign air carrier. B. Planning. Those persons described IN paragraph A (APPLICABILITY) planning to fly into, out of, within, OR over the above-named area at altitudes below flight level 260 are strongly reminded to review current security/threat information and NOTAMS; comply with all applicable FAA regulations, operations specifications, management specifications, and letters of authorization, including updating B450; and, to the maximum extent possible, provide at least 72-hour advance notice of planned flights to the FAA at FAA-WATCH@FAA.Governor with specific flight details. C. Operations. Exercise caution during flight operations due to ongoing fighting and the possibility of attacks on civil aviation by extremists/militants. Aircraft May encounter fire from small ARMS; indirect fire weapons, such as mortars and ROCKETS; and Anit-aircraft-capable weapons, including MAN-portable air defense systems (MANPADS). Such weapons could target aircraft at low altitudes, including during the arrival and departure phases of flight, and/OR airports and aircraft on the ground. Those persons described IN paragraph A (APPLICABILITY) must report safety and/OR security incidents to the FAA at +1 202-267-3333. Additional information IS provided at: https://WWW.FAA.Governor/AIR_TRAFFIC/publications/US_RESTRICTIONS/ Feb 26, 2022 1222Z to Feb 26, 2023 2359Z Estimated

KICZ A0008/22 KICZ 20220226122000 20230226235900 United states of America advisory for Kenya. Those persons described IN paragraph A (APPLICABILITY) below are advised to exercise caution when flying into, out of,

within, OR over the territory and airspace of Kenya east of 40 degrees east longitude at altitudes below flight level (FL) 260 due to the possibility of extremist/militant activity. A. Applicability. This NOTAM applies to: all United States air carriers and commercial OPERATORS; all persons exercising the privileges of an airman certificate issued by the FAA, except such persons operating U.S.-Registered aircraft for A foreign air CARRIER; and all operators of civil aircraft registered IN the united states, except where the operator of such aircraft IS A foreign air carrier. B. Planning. Those persons described IN paragraph A (APPLICABILITY) planning to fly into, out of, within, OR over the above-named area at altitudes below flight level 260 are strongly reminded to review current security/threat information and NOTAMS; comply with all applicable FAA regulations, operations specifications, management specifications, and letters of authorization, including updating B450; and, to the maximum extent possible, provide at least 72-hour advance notice of planned flights to the FAA at FAA-WATCH@FAA.Governor with specific flight details. C. Operations. Exercise caution during flight operations due to the possibility of attacks on civil aviation by extremists/militants. Aircraft May encounter fire from small ARMS; indirect fire weapons, such as mortars and ROCKETS; and Anit-aircraft-capable weapons, including MAN-portable air defense systems (MANPADS). Such weapons could target aircraft at low altitudes, including during the arrival and departure phases of flight, and/OR target airports and aircraft on the ground, especially at airports located east of 40 degrees east longitude. Those persons described IN paragraph A (APPLICABILITY) must report safety and/OR security incidents to the FAA at +1 202-267-3333. Information IS provided at: https://WWW.FAA.Governor/AIR_TRAFFIC/publications/US_RESTRICTIONS/ Feb 26, 2022 1220Z to Feb 26, 2023 2359Z Estimated

KICZ A0028/19 KICZ 20191211130000 20230107235900 Security..United states of America flight prohibition against certain flights IN the territory and airspace of SOMALIA. 14 CFR 91.1613 special federal aviation regulation (SFAR) no. 107 prohibition against certain flights IN the territory and airspace of SOMALIA was published IN the federal register on 11 December 2019 and was effective immediately. Additional information IS provided at: https://WWW.FAA.Governor/AIR_TRAFFIC/publications/US_RESTRICTIONS/. Surface - 259, Dec 11, 2019 1300Z to Jan 07, 2023 2359Z

Uncategorized NOTAMs

All published NOTAMs are available in the [Notices to Airmen Publication \(NTAP\)](#).

None

Other

Flow Control

Departure: None

Route: None

Destination: None

Alternate 1: None

Alternate 2: None

Other:

Advisory ID: 038

Reporting ARTCC: None

Advisory Effective Start Time: Tue Jun 07 12:20:00 UTC 2022

Advisory Effective End Time: Mon Jun 20 22:06:00 UTC 2022
Advisory Text: ATCSCC ADVZY 038 DCC 06/07/2022 VOLCANIC ACTIVITY BULLETIN - SANGAY
FVXX20 KNES 071220 WSI DDS:071222
VA ADVISORY
DTG: 20220607/1220Z

VAAC: WASHINGTON

VOLCANO: SANGAY 352090
PSN: S0200 W07820

AREA: ECUADOR

SUMMIT ELEV: 17159 FT (5230 M)

ADVISORY NR: 2022/578

INFO SOURCE: GOES-16. NWP MODELS.

ERUPTION DETAILS: CONS VA EMS.

OBS VA DTG: 07/1130Z

OBS VA CLD: SFC/FL220 S0130 W07848 - S0200 W07819
- S0202 W07819 - S0153 W07849 - S0130 W07848 MOV
W 10KT

FCST VA CLD +6HR: 07/1730Z SFC/FL220 S0117 W07908
- S0159 W07819 - S0202 W07819 - S0157 W07908 -
S0117 W07908

FCST VA CLD +12HR: 07/2330Z SFC/FL220 S0137
W07903 - S0159 W07819 - S0202 W07819 - S0157
W07910 - S0137 W07903

FCST VA CLD +18HR: 08/0530Z SFC/FL220 S0139
W07907 - S0159 W07818 - S0202 W07819 - S0203
W07911 - S0139 W07907

RMK: CONS VA EMS OBSD EXTDG 25 NMI WNW FM SUMMIT
THEN TO A POINT 40 NMI NW OF THE SUMMIT. VA MOVD
NW UNTIL WSHFT ARND 09Z STARTED MOVG VA WNW. NWP
MDLS SUGGEST VA AT FL220 AND FCST LTLCG IN WINDS
THRU T+18. ...HOSLEY

NXT ADVISORY: WILL BE ISSUED BY 20220607/1815Z

202206071220-202206071815

Advisory ID: 068

Reporting ARTCC: None

Advisory Effective Start Time: Wed Jun 08 17:21:00 UTC 2022

Advisory Effective End Time: Thu Jun 09 03:30:00 UTC 2022

Advisory Text: ATCSCC ADVZY 068 DCC 06/08/2022 DC METRO HOTLINE_FYI

EVENT TIME: 08/1720 - 9/0300

THE DC METRO HOTLINE IS BEING ACTIVATED TO ADDRESS THE WX ISSUES IN THE ZDC TERMINAL AREAS. THE PHONE NUMBER IS 540-359-3200, PIN 2779. PARTICIPATION IS MANDATORY FOR ZDC/PCT/IAD/BWI/DCA AND VOLUNTARY FOR FIRST TIER CENTERS . CUSTOMERS ARE INVITED TO JOIN AT THE SAME NUMBER.

081721-090330

22/06/08 17:21 DCCOPS.lxstn25

Advisory ID: 076

Reporting ARTCC: None

Advisory Effective Start Time: Wed Jun 08 18:28:00 UTC 2022

Advisory Effective End Time: Thu Jun 09 03:30:00 UTC 2022

Advisory Text: ATSCC ADVZY 076 DCC 06/08/2022 COMMAND CENTER ATC ALERT
EVENT TIME: 08/1800 - 0300

ATSCC ATC ALERT DUE TO COMM TRIGGER. CONNECTION TO THE ADVANCED PLAN AND THE PLANNING WEBINARS ARE LIKELY TO BE AFFECTED.

081828-090330

22/06/08 18:28 DCCOPS.lxstn37

Advisory ID: 043

Reporting ARTCC: None

Advisory Effective Start Time: Tue Jun 07 13:35:00 UTC 2022

Advisory Effective End Time: Mon Jun 20 22:06:00 UTC 2022

Advisory Text: ATSCC ADVZY 043 DCC 06/07/2022 VOLCANIC ACTIVITY BULLETIN - FUEGO
FVXX24 KNES 071335 WSI DDS:071337

VA ADVISORY

DTG: 20220607/1335Z

VAAC: WASHINGTON

VOLCANO: FUEGO 342090

PSN: N1428 W09052

AREA: GUATEMALA

SUMMIT ELEV: 12346 FT (3763 M)

ADVISORY NR: 2022/537

INFO SOURCE: GOES-16. NWP MODELS.

ERUPTION DETAILS: DISCRETE VA EM ARND 1130Z.

OBS VA DTG: 07/1300Z

OBS VA CLD: SFC/FL160 N1456 W09110 - N1428 W09052
- N1426 W09053 - N1448 W09119 - N1456 W09110 MOV
NW 20KT

FCST VA CLD +6HR: 07/1900Z SFC/FL160 N1501 W09115
- N1429 W09051 - N1426 W09053 - N1449 W09128 -
N1501 W09115

FCST VA CLD +12HR: 08/0100Z SFC/FL160 N1454

W09118 - N1429 W09052 - N1426 W09053 - N1441
W09127 - N1454 W09118

FCST VA CLD +18HR: 08/0700Z SFC/FL160 N1457
W09113 - N1428 W09050 - N1425 W09053 - N1442
W09128 - N1457 W09113

RMK: VA CLD OBSD ABT 30 NMI NW OF THE SUMMIT THRU
WX CLD CVR. WEBCAM INOP. NWP MDLS SUGGEST VA CLD
AT FL160 AND FCST ONLY SLGT CHGS IN WINDS THRU
T+18HRS. ...HOSLEY

NXT ADVISORY: WILL BE ISSUED BY 20220607/1930Z

202206071335-202206071930

Advisory ID: 009

Reporting ARTCC: None

Advisory Effective Start Time: Wed Jun 08 03:46:00 UTC 2022

Advisory Effective End Time: Mon Jun 20 22:06:00 UTC 2022

Advisory Text: ATCSCC ADVZY 009 DCC 06/08/2022 VOLCANIC ACTIVITY BULLETIN -
REVENTADOR

FVXX21 KNES 080346 WSI DDS:080347

VA ADVISORY

DTG: 20220608/0346Z

VAAC: WASHINGTON

VOLCANO: REVENTADOR 352010

PSN: S0004 W07739

AREA: ECUADOR

SUMMIT ELEV: 11686 FT (3562 M)

ADVISORY NR: 2022/456

INFO SOURCE: GOES-16. NWP MODELS. VOLCAT.

ERUPTION DETAILS: CONT VA EMS

OBS VA DTG: 08/0300Z

OBS VA CLD: SFC/FL160 N0000 W07757 - S0004 W07739
- S0009 W07756 - N0000 W07757 MOV W 5KT

FCST VA CLD +6HR: 08/0900Z SFC/FL160 S0000 W07757
- S0004 W07739 - S0009 W07756 - S0000 W07757

FCST VA CLD +12HR: 08/1500Z SFC/FL160 N0000
W07758 - S0004 W07739 - S0010 W07756 - N0000
W07758

FCST VA CLD +18HR: 08/2100Z NO VA EXP

RMK: CONT VA EMS OBS MOV W FM SUMMIT IN STLT
IMAGERY. VA FCST TO CONT W MOV THRU T+12HRS
BEFORE DISP. VO ACT MODERATE. ...FISHER

NXT ADVISORY: WILL BE ISSUED BY 20220608/0945Z
202206080346-202206080945

Advisory ID: 011

Reporting ARTCC: None

Advisory Effective Start Time: Wed Jun 08 06:55:00 UTC 2022

Advisory Effective End Time: Mon Jun 20 22:06:00 UTC 2022

Advisory Text: ATCSCC ADVZY 011 DCC 06/08/2022 VOLCANIC ACTIVITY BULLETIN - FUEGO

FVXX24 KNES 080655 WSI DDS:080656

VA ADVISORY

DTG: 20220608/0655Z

VAAC: WASHINGTON

VOLCANO: FUEGO 342090

PSN: N1428 W09052

AREA: GUATEMALA

SUMMIT ELEV: 12346 FT (3763 M)

ADVISORY NR: 2022/540

INFO SOURCE: GOES-16. NWP MODELS. VOLCAT.

ERUPTION DETAILS: CONT VA EMS PSBL

OBS VA DTG: 08/0620Z

OBS VA CLD: SFC/FL160 N1435 W09116 - N1431 W09052

- N1422 W09117 - N1435 W09116 MOV W 10KT

FCST VA CLD +6HR: 08/1230Z SFC/FL160 N1438 W09119

- N1430 W09052 - N1425 W09117 - N1438 W09119

FCST VA CLD +12HR: 08/1830Z NO VA EXP

FCST VA CLD +18HR: 09/0030Z NO VA EXP

RMK: CONT VA EMS PSBL MOV W FM SUMMIT. VA NOT OBS

DUE TO WX CLDS. PSBL VA FCST TO CONT W MOV THRU

T+6HRS BEFORE DISP. VO ACT LOW ...FISHER

NXT ADVISORY: WILL BE ISSUED BY 20220608/1300Z

202206080655-202206081300

Advisory ID: 074

Reporting ARTCC: None

Advisory Effective Start Time: Wed Jun 08 18:14:00 UTC 2022

Advisory Effective End Time: Mon Jun 20 22:06:00 UTC 2022

Advisory Text: ATCSCC ADVZY 074 DCC 06/08/2022 VOLCANIC ACTIVITY BULLETIN - SANGAY
FVXX20 KNES 081814 WSI DDS:081817
VA ADVISORY
DTG: 20220608/1814Z

VAAC: WASHINGTON

VOLCANO: SANGAY 352090
PSN: S0200 W07820

AREA: ECUADOR

SUMMIT ELEV: 17159 FT (5230 M)

ADVISORY NR: 2022/584

INFO SOURCE: GOES-16. NWP MODELS.

ERUPTION DETAILS: INTMT VA EMS.

OBS VA DTG: 08/1750Z

OBS VA CLD: SFC/FL220 S0152 W07832 - S0200 W07819
- S0201 W07820 - S0158 W07835 - S0152 W07832 MOV
W 10KT

FCST VA CLD +6HR: 09/0000Z SFC/FL220 S0147 W07839
- S0200 W07819 - S0202 W07820 - S0158 W07844 -
S0147 W07839

FCST VA CLD +12HR: 09/0600Z SFC/FL220 S0144
W07837 - S0200 W07819 - S0201 W07820 - S0155
W07843 - S0144 W07837

FCST VA CLD +18HR: 09/1200Z SFC/FL220 S0145
W07837 - S0200 W07819 - S0201 W07819 - S0158
W07843 - S0145 W07837

RMK: LKLY LGT VA CLDS OBSD MOVG WNW OF SUMMIT ON
STLT IMAGERY. WX CLD CVR OBSC SUMMIT ON WEBCAM.
NWP MDLS FCST LTLCG IN WINDS THRU T+18HRS.
...HOSLEY

NXT ADVISORY: WILL BE ISSUED BY 20220609/0015Z

202206081814-202206090015

Advisory ID: 096

Reporting ARTCC: None

Advisory Effective Start Time: Tue Jun 07 23:37:00 UTC 2022

Advisory Effective End Time: Mon Jun 20 22:06:00 UTC 2022

Advisory Text: ATCSCC ADVZY 096 DCC 06/07/2022 VOLCANIC ACTIVITY BULLETIN - SANGAY
FVXX20 KNES 072337 WSI DDS:072340

VA ADVISORY

DTG: 20220607/2337Z

VAAC: WASHINGTON

VOLCANO: SANGAY 352090

PSN: S0200 W07820

AREA: ECUADOR

SUMMIT ELEV: 17159 FT (5230 M)

ADVISORY NR: 2022/580

INFO SOURCE: GOES-16. VONA. WEBCAM. NWP MODELS.

ERUPTION DETAILS: ONGOING VA EMS.

OBS VA DTG: 07/2310Z

OBS VA CLD: SFC/FL210 S0140 W07907 - S0159 W07819
- S0201 W07819 - S0204 W07910 - S0140 W07907 MOV
W 10KT

FCST VA CLD +6HR: 08/0500Z SFC/FL210 S0136 W07908
- S0159 W07819 - S0201 W07821 - S0159 W07913 -
S0136 W07908

FCST VA CLD +12HR: 08/1100Z SFC/FL210 S0135
W07905 - S0159 W07819 - S0201 W07822 - S0155
W07908 - S0135 W07905

FCST VA CLD +18HR: 08/1700Z SFC/FL210 S0134
W07902 - S0159 W07819 - S0201 W07821 - S0152
W07910 - S0134 W07902

RMK: INTERMITTENT VA EMS NOTED IN STLT AND WEB
CAM IMAGERY. ALSO, VONA REPORT. VA MOV TO W AND
WNW OF SUMMIT. LITTLE CHANGE IN MOTION EXPECTED.
...LEE

NXT ADVISORY: WILL BE ISSUED BY 20220608/0530Z
202206072337-202206080530

Advisory ID: 053

Reporting ARTCC: None

Advisory Effective Start Time: Wed Jun 08 15:12:00 UTC 2022

Advisory Effective End Time: Wed Jun 08 21:00:00 UTC 2022

Advisory Text: ATCSCC ADVZY 053 DCC 06/08/22 ROUTE RQD /FL

NAME: OHIO_VALLEY_TO_FLORIDA_1_PARTIAL

CONSTRAINED AREA: ZJX

REASON: WEATHER

INCLUDE TRAFFIC: KATL/KCLE/KDET/KDTW/KFNT/KLAN/KYIP/ZAU/ZID/ZOB

DEPARTURES TO

KAPF/KBCT/KFLL/KFMY/KFXE/KMIA/KMKY/KOPF/KPBI/KPIE/K

RSW/KSRQ

FACILITIES INCLUDED: ZAU/ZID/ZJX/ZMA/ZME/ZOB/ZTL

FLIGHT STATUS: ALL_FLIGHTS
VALID: ETD 081030 TO 082100
PROBABILITY OF EXTENSION: MODERATE
REMARKS: REPLACES ADVZY 020
IMPLEMENTED DUE TO ZJX STAFFING.
ASSOCIATED RESTRICTIONS:
MODIFICATIONS: PLAY EXTENDED
ROUTES:

FROM:

ORIG ROUTE - ORIGIN SEGMENTS

KATL >WALET
KATL >LUCKK HONID
KCLE >APE SPAYD VXV THRSR HONID
KDTW KDET KYIP >STAZE FLM J43 VXV THRSR
KDTW KDET KYIP >STAZE FLM J43 VXV THRSR HONID
KFNT KLAN >ROD J43 VXV THRSR
KFNT KLAN >ROD J43 VXV THRSR HONID
ZAU >HITMN ACORI
ZAU >HITMN Q19 BULZI
ZAU >HITMN THRSR
ZID >VXV THRSR HONID
ZID >VXV THRSR
ZOB(-DTW -DET -YIP -FNT -LAN >SPAYD VXV THRSR
-CLE)
ZOB(-DTW -DET -YIP -FNT -LAN >SPAYD VXV THRSR HONID
-CLE)

TO:

DEST ROUTE - DESTINATION SEGMENTS

KAPF HONID Q81 NICKI PLYER< PIKKR7
KAPF BULZI Q81 NICKI PLYER< PIKKR7
KBCT WALET ZPLEN< VUUDU1
KBCT THRSR Q79 ZPLEN< VUUDU1
KFLL THRSR Q79 ZPLEN< TEEKY2
KFLL WALET ZPLEN< TEEKY2
KFMY HONID Q81 NICKI PLYER< TYNEE2
KFMY BULZI Q81 NICKI PLYER< TYNEE2
KFXE THRSR Q79 ZPLEN< TEEKY2
KFXE WALET ZPLEN< TEEKY2
KMIA ACORI< FROGZ2
KMIA HONID< FROGZ2
KMKY BULZI Q81 NICKI PLYER< PIKKR7
KMKY HONID Q81 NICKI PLYER< PIKKR7
KOPF ACORI< FROGZ2
KOPF HONID< FROGZ2
KPBI THRSR Q79 ZPLEN< VUUDU1
KPBI WALET ZPLEN< VUUDU1
KPIE HONID< BANGZ1

KRSW HONID Q81 NICKI PLYER< TYNEE2
KRSW BULZI Q81 NICKI PLYER< TYNEE2
KSRQ HONID< BANGZ1

TMI ID: RRDCC017
081512-082100
22/06/08 15:12 DCCOPS.lxstn22

Advisory ID: 019

Reporting ARTCC: None
Advisory Effective Start Time: Tue Jun 07 10:37:00 UTC 2022
Advisory Effective End Time: Mon Jun 20 22:06:00 UTC 2022
Advisory Text: ATCCSCC ADVZY 019 DCC 06/07/2022 VOLCANIC ACTIVITY BULLETIN -
REVENTADOR
FVXX21 KNES 071037 WSI DDS:071038
VA ADVISORY
DTG: 20220607/1037Z

VAAC: WASHINGTON

VOLCANO: REVENTADOR 352010
PSN: S0005 W07739

AREA: ECUADOR

SUMMIT ELEV: 11686 FT (3562 M)

ADVISORY NR: 2022/453

INFO SOURCE: GOES-16. NWP MODELS. VOLCAT.

ERUPTION DETAILS: CONT VA EMS

OBS VA DTG: 07/0950Z

OBS VA CLD: SFC/FL160 N0015 W07743 - S0004 W07739
- N0010 W07755 - N0015 W07743 MOV NW 5KT

FCST VA CLD +6HR: 07/1600Z SFC/FL160 N0016 W07744
- S0004 W07739 - N0011 W07755 - N0016 W07744

FCST VA CLD +12HR: 07/2200Z SFC/FL160 N0016
W07744 - S0004 W07739 - N0010 W07755 - N0016
W07744

FCST VA CLD +18HR: 08/0400Z NO VA EXP

RMK: CONT VA EMS OBS MOV NW TO N IN STLT IMAGERY.
VA FCST TO CONT NW MOV THRU T+12HRS BEFORE DISP.
VO ACT MODERATE. ...FISHER

NXT ADVISORY: WILL BE ISSUED BY 20220607/1630Z
202206071037-202206071630

Advisory ID: 053

Reporting ARTCC: None
Advisory Effective Start Time: Tue Jun 07 15:22:00 UTC 2022

Advisory Effective End Time: Mon Jun 20 22:06:00 UTC 2022
Advisory Text: ATCSCC ADVZY 053 DCC 06/07/2022 VOLCANIC ACTIVITY BULLETIN -
POPOCATEPETL
FVXX22 KNES 071522 WSI DDS:071524
VA ADVISORY
DTG: 20220607/1522Z

VAAC: WASHINGTON

VOLCANO: POPOCATEPETL 341090
PSN: N1901 W09837

AREA: MEXICO

SUMMIT ELEV: 17802 FT (5426 M)

ADVISORY NR: 2022/070

INFO SOURCE: GOES-16. WEBCAM.

ERUPTION DETAILS: VA FM EARLIER EMS HAS DISPD.

OBS VA DTG: 07/1511Z

OBS VA CLD: VA NOT IDENTIFIABLE FROM SATELLITE
DATA.

FCST VA CLD +6HR: 07/2100Z NO VA EXP

FCST VA CLD +12HR: 08/0300Z NO VA EXP

FCST VA CLD +18HR: 08/0900Z NO VA EXP

RMK: VA FM OVERNIGHT EMS DISPD OVR N CTRL
GUERRERO EARLIER THIS MORNING. NO VA OBSD ON
WEBCAM SINCE 1026Z UNDER CLR CONDITIONS. NO VA
CLDS SEEN BY STLT EITHER. ...HOSLEY

NXT ADVISORY: NO FURTHER ADVISORIES

202206071522-202206072122

Advisory ID: 040

Reporting ARTCC: None

Advisory Effective Start Time: Wed Jun 08 13:48:00 UTC 2022

Advisory Effective End Time: Wed Jun 08 21:00:00 UTC 2022

Advisory Text: ATCSCC ADVZY 040 DCC 06/08/22 FCA RQD

NAME: FCA001:NE_TO_FLORIDA_VIA_J48_3_PARTIAL

CONSTRAINED AREA: ZJX

REASON: OTHER

INCLUDE TRAFFIC: KJFK/KPHL/ZNY DEPARTURES TO
KAPF/KBCT/KFLL/KFMY/KMCO/KMIA/KMKY/KPBI/KPIE/KRSW/K
SRQ/KTPA

FACILITIES INCLUDED: ZDC/ZJX/ZMA/ZNY/ZTL

FLIGHT STATUS: ALL_FLIGHTS

VALID: FCA ENTRY TIME FROM 081000 TO 082100
PROBABILITY OF EXTENSION: MODERATE
REMARKS: REPLACES ADVZY 019

SEE DYNAMIC LIST FOR UPDATES. FOR ZJX STAFFING
START TIME AT 1000Z TO ACTIVATE RERTE MONITOR TO IDENTIFY
IMPACTED FLIGHTS.

AR'S AND WATRS ROUTING EXEMPT WHEN AVAILABLE

ASSOCIATED RESTRICTIONS:
MODIFICATIONS: PLAY EXTENDED; MCO ADDED
ROUTES:

FROM:

ORIG ROUTE - ORIGIN SEGMENTS

KJFK >RBV Q430 BYRDD J48 CSN FANPO
Q40 ALEAN VXV
KPHL >STOEN REEFI EMI J48 CSN FANPO
Q40 ALEAN VXV
ZNY(-JFK -PHL) >LANNA J48 CSN FANPO Q40 ALEAN
VXV

TO:

DEST ROUTE - DESTINATION SEGMENTS

KAPF VXV ATL HONID Q81 NICKI PLYER<
PIKKR7
KBCT VXV THRSR Q79 ZPLEN< VUUDU1
KFLL VXV THRSR Q79 ZPLEN< TEEKY2
KFMV VXV ATL HONID Q81 NICKI PLYER<
TYNEE2
KMCO VXV THRSR ZJAYX< GRNCH3
KMIA VXV THRSR HONID< FROGZ2
KMKY VXV ATL HONID Q81 NICKI PLYER<
PIKKR7
KPBI VXV THRSR Q79 ZPLEN< VUUDU1
KPIE VXV THRSR HONID< BANGZ1
KRSW VXV ATL HONID Q81 NICKI PLYER<
TYNEE2
KSRQ VXV THRSR HONID< BANGZ1
KTPA VXV THRSR HONID< MAATY3

TMI ID: RRDCC019
081348-082100
22/06/08 13:48 DCCOPS.lxstn22

Advisory ID: 044

Reporting ARTCC: None

Advisory Effective Start Time: Wed Jun 08 14:12:00 UTC 2022

Advisory Effective End Time: Wed Jun 15 00:29:00 UTC 2022

Advisory Text: ATSCC ADVZY 044 ZFW 06/08/2022 TEXAS HOTLINE_FYI

EVENT TIME: 08/1415 - 14/2359

CONSTRAINED FACILITIES: ZFW

THE TEXAS HOTLINE IS BEING ACTIVATED TO ADDRESS THE WX ISSUES IN THE ZHU/ZFW TERMINAL AREAS. THE PHONE NUMBER IS 540-359-3200, PIN 2244. PARTICIPATION IS MANDATORY FOR ZFW/ZHU/D10/I90, AND VOLUNTARY FOR FIRST TIER CENTERS AND ZHU/ZFW TWRS. CUSTOMERS ARE INVITED TO JOIN AT THE SAME NUMBER.
081412-150029
22/06/08 14:12 DCCOPS.lxstn37

Advisory ID: 041

Reporting ARTCC: None
Advisory Effective Start Time: Wed Jun 08 13:50:00 UTC 2022
Advisory Effective End Time: Mon Jun 20 22:06:00 UTC 2022
Advisory Text: ATCSCC ADVZY 041 DCC 06/08/2022 VOLCANIC ACTIVITY BULLETIN - POPOCATEPETL
FVXX22 KNES 081350 WSI DDS:081351
VA ADVISORY
DTG: 20220608/1350Z

VAAC: WASHINGTON

VOLCANO: POPOCATEPETL 341090
PSN: N1901 W09837

AREA: MEXICO

SUMMIT ELEV: 17802 FT (5426 M)

ADVISORY NR: 2022/071

INFO SOURCE: GOES-16. WEBCAM. NWP MODELS.
RADIOSONDE.

ERUPTION DETAILS: INTMT VA EMS.

OBS VA DTG: 08/1341Z

OBS VA CLD: SFC/FL190 N1902 W09839 - N1902 W09838
- N1900 W09847 - N1902 W09847 - N1902 W09839 MOV
W 20KT

FCST VA CLD +6HR: 08/1930Z SFC/FL190 N1904 W09909
- N1903 W09838 - N1901 W09838 - N1853 W09908 -
N1904 W09909

FCST VA CLD +12HR: 09/0130Z NO VA EXP

FCST VA CLD +18HR: 09/0730Z NO VA EXP

RMK: VA EMS OBSD ON WEBCAM AT 1249Z AND 1321Z. VA
OBSD BY G16 MOVG W TO 10 NMI AWAY FM SUMMIT. VA
LKLY TO DISP QUICKLY. FL ESTD FM 12Z MMMX
RADIOSONDE. NWP MDLS FCST LTL CG IN WINDS THRU
T+6. ...HOSLEY

NXT ADVISORY: WILL BE ISSUED BY 20220608/1945Z

202206081350-202206081945

Advisory ID: 038

Reporting ARTCC: None

Advisory Effective Start Time: Wed Jun 08 13:30:00 UTC 2022

Advisory Effective End Time: Mon Jun 20 22:06:00 UTC 2022

Advisory Text: ATSCC ADVZY 038 DCC 06/08/2022 VOLCANIC ACTIVITY BULLETIN - SEMISOPOCHNOI

FVAK21 PAWU 081330 WSI FAA:081330

VAAAK1

VA ADVISORY

DTG: 20220608/1330Z

VAAC: ANCHORAGE

VOLCANO: SEMISOPOCHNOI 311060

PSN: N5156 E17935

AREA: ALEUTIAN ISLANDS

SUMMIT ELEV: 4006 FT (1221 M)

ADVISORY NR: 2022/040

INFO SOURCE: HIMAWARI/GOES 17.

AVIATION COLOR CODE: ORANGE

ERUPTION DETAILS: CONTINUOUS LOW-LVL ERUPTION.

OBS VA DTG: 08/1330Z

OBS VA CLD: SFC/FL050 N5159 E17949 - N5008 E17822 - N5015 E17634
- N5030 E17653 - N5047 E17815 - N5159 E17927 - N5159 E17949 MOV
SSW 20KT

FCST VA CLD +6HR: 08/1930Z SFC/FL050 N5159 E17953 - N4947 E17807
- N4946 E17660 - N5158 E17926 - N5159 E17953

FCST VA CLD +12HR: 09/0130Z SFC/FL050 N5159 E17954 - N4856
E17732 - N4922 E17635 - N5158 E17925 - N5159 E17954

FCST VA CLD +18HR: 09/0730Z SFC/FL050 N5159 W17959 - N4836
E17714 - N4910 E17634 - N5159 E17931 - N5159 W17959 - N5159 W17959

RMK: VA SIGNAL OBSERVED IN SATELLITE IMAGERY. TRANSPORT FLOW WL CONT
TO MV VA PLUME TO THE SW THRU THE FCST PD. ...JAM

NXT ADVISORY: WILL BE ISSUED BY 20220608/1930Z

202206081330-202206081930

Advisory ID: 054

Reporting ARTCC: None

Advisory Effective Start Time: Wed Jun 08 15:24:00 UTC 2022

Advisory Effective End Time: Mon Jun 20 22:06:00 UTC 2022

Advisory Text: ATCSCC ADVZY 054 DCC 06/08/2022 VOLCANIC ACTIVITY BULLETIN -
REVENTADOR

FVXX21 KNES 081524 WSI DDS:081527

VA ADVISORY

DTG: 20220608/1524Z

VAAC: WASHINGTON

VOLCANO: REVENTADOR 352010

PSN: S0005 W07739

AREA: ECUADOR

SUMMIT ELEV: 11686 FT (3562 M)

ADVISORY NR: 2022/458

INFO SOURCE: GOES-16. NWP MODELS.

ERUPTION DETAILS: PSBL VA CLDS.

OBS VA DTG: 08/1500Z

OBS VA CLD: SFC/FL160 S0000 W07801 - S0004 W07739
- S0005 W07739 - S0008 W07804 - S0000 W07801 MOV
W 10KT

FCST VA CLD +6HR: 08/2100Z SFC/FL160 S0004 W07739
- S0005 W07738 - S0019 W07806 - S0006 W07808 -
S0004 W07739

FCST VA CLD +12HR: 09/0300Z NO VA EXP

FCST VA CLD +18HR: 09/0900Z NO VA EXP

RMK: PSBL VA CLD OBSD BY STLT 25-30 NMI W OF
SUMMIT. WX CLD CVR OBS MUCH OF THE VA CLD AND
AREA BTWN VA CLD AND SUMMIT. NWP MDLS FCST VA TO
START MOVG WSW BY T+6. ...HOSLEY

NXT ADVISORY: WILL BE ISSUED BY 20220608/2130Z

202206081524-202206082130

Advisory ID: 066

Reporting ARTCC: None

Advisory Effective Start Time: Wed Jun 08 16:58:00 UTC 2022

Advisory Effective End Time: Thu Jun 09 02:00:00 UTC 2022

Advisory Text: ATCSCC ADVZY 066 DCC 06/08/22 ROUTE FYI

NAME: ATL_CLT_CDRS_SWAP
CONSTRAINED AREA: ZTL
REASON: WEATHER
INCLUDE TRAFFIC: KATL DEPARTURES TO UNKN
FACILITIES INCLUDED: ZTL/ZJX/ZHU/ZME/ZID/ZDC
FLIGHT STATUS: ALL_FLIGHTS
VALID: ETD 081150 TO 090200
PROBABILITY OF EXTENSION: LOW
REMARKS: REPLACES ADVZY 057.
ASSOCIATED RESTRICTIONS:
MODIFICATIONS: ADDED KCLT DEPTS.
ROUTES:

ORIG DEST ROUTE

KATL KCLT UNKN CDR RTE:DEPARTURES CAN
EXPECT CDRS/SWAP DUE TO
WEATHER. USERS SHOULD FILE
NORMAL ROUTES BUT FUEL
ACCORDINGLY.

081658-090200
22/06/08 16:58 DCCOPS.lxstn28

Advisory ID: 108

Reporting ARTCC: DCC

Advisory Effective Start Time: Fri May 20 19:46:00 UTC 2022

Advisory Effective End Time: Tue Jun 14 21:59:00 UTC 2022

Advisory Text: ATCSCC ADVZY 108 DCC 05/20/2022 OPERATIONS PLAN

EVENT TIME: 20/2000 - AND LATER

PROPOSAL FOR JFK GROUND DELAY PROGRAM FORTHCOMING WITH CONFERENCE TO FOLLOW. EWR/LGA/TEB GROUND STOPS DUE TO THUNDERSTORMS ALL EXTENDED UNTIL 2100Z. THUNDERSTORMS IN SOUTH FLORIDA IMPACTING DEPARTURE AND ARRIVAL GATES TO SOUTH FLORIDA.

TERMINAL CONSTRAINTS:

N90/PHL - LOW CIGS/THUNDERSTORMS

C90/FLORIDA - THUNDERSTORMS

LAS - WIND/EVENT VOLUME

DEN - LOW CIGS/VIS/SNOW

SNA - STAFFING TRIGGER (1345-0400Z)

SCT - STAFFING

TERMINAL CONSTRAINTS/LOW WEATHER/EXTERNAL RFI:

PVD/ISP/HPN

TERMINAL ACTIVE:

UNTIL 2100 -EWR GROUND STOP

UNTIL 2100 -LGA GROUND STOP

UNTIL 2100 -TEB GROUND STOP

UNTIL 2359 -PHL GROUND DELAY PROGRAM
UNTIL 0259 -LAS GROUND DELAY PROGRAM
UNTIL 0329 -JFK GROUND DELAY PROGRAM
UNTIL 0359 -EWR RGROUND DELAY PROGRAM
UNTIL 0459 -LGA GROUND DELAY PROGRAM

TERMINAL PLANNED:

UNTIL 0000 -PHL GROUND STOP POSSIBLE
UNTIL 0000 -MCO/TPA GROUND STOPS/DELAY PROGRAMS POSSIBLE
UNTIL 0000 -SOUTH FLORIDA GROUND STOPS/DELAY PROGRAM POSSIBLE
UNTIL 0200 -ORD/MDW GROUND STOPS/DELAY PROGRAMS POSSIBLE
UNTIL 0200 -DEN GROUND STOP/DELAY PROGRAM POSSIBLE

EN ROUTE CONSTRAINTS:

ZAU/ZMP/ZMA/ZJX/ZKC/ZME/ZFW - THUNDERSTORMS
ZDC - MILITARY EXERCISE
ZKC - PGA CHAMPIONSHIP
ZJX/ZMA - FLORIDA METROPLEX
ZJX - STAFFING UNTIL 0200Z
ZLA - STAFFING UNTIL 2100Z

EN ROUTE ACTIVE:

UNTIL 2100 -WEVEL_PARTIAL
UNTIL 2100 -PHX_HYDRR_PARTIAL
UNTIL 2300 -WATRS_MODIFIED
UNTIL 0000 -SERMN_NORTH_PARTIAL
UNTIL 0000 -SERMN_SOUTH_PARTIAL
UNTIL 0200 -PHLYER_SOUTH_2
UNTIL 0200 -PHLYER_WEST
UNTIL 0200 -DQO_TUNNEL_WEST
UNTIL 0200 -DQO_TUNNEL_SOUTHWEST
UNTIL 0200 -NORTHEAST_TO_FL_METROPLEX

EN ROUTE PLANNED

UNTIL 0000 -GULF ROUTE CLOSURES POSSIBLE
AFTER 0000 -OVERNIGHT CARGO ROUTES POSSIBLE

CDR/SWAP ADVISORIES:

UNTIL 1900 -ORD_MDW_CDRS_SWAP
UNTIL 0000 -DC_METRO_SWAP IMPLEMENTATION PLAN FYI
UNTIL 0400 -ZBW_SWAP_IMPLEMENTATION_PLAN_FYI

RUNWAY/EQUIPMENT/SYSTEM IMPACT REPORTS(SIR):

IAD - RWY 12/30 CLOSED UNTIL 06/18/22 0900Z
DAL - RWY 13R/31L CLOSED UNTIL 06/20/22 2300Z
MCO - RWY 17L/35R CLOSED UNTIL 06/28/22 2359Z

AFP ACTIVE:

UNTIL 2259 -FCAMA1

AFP PLANNED:

NONE

FLIGHT CHECK:

NONE

VIP MOVEMENT:
NONE

NEXT PLANNING WEBINAR: 2115Z
201946-142159
22/05/20 19:46 DCCOPS.lxstn35

Advisory ID: 051

Reporting ARTCC: None
Advisory Effective Start Time: Wed Jun 08 15:07:00 UTC 2022
Advisory Effective End Time: Wed Jun 08 21:30:00 UTC 2022
Advisory Text: ATCSCC ADVZY 051 DCC 06/08/22 FCA RQD
NAME: FCA006:ELP_PARTIAL
CONSTRAINED AREA: ZFW
REASON: WEATHER
INCLUDE TRAFFIC: KATL/KCLT/KMIA/KTPA/ZJX/ZMA/ZTL DEPARTURES TO
KLAS/KLAX/KLGB/KOAK/KPHX/KSAN/KSFO/KSJC/KSLC/KSNA
FACILITIES INCLUDED: ZAB/ZHU/ZJX/ZLA/ZLC/ZMA/ZOA/ZTL
FLIGHT STATUS: ALL_FLIGHTS
VALID: FCA ENTRY TIME FROM 081630 TO 082130
PROBABILITY OF EXTENSION: MODERATE
REMARKS: SEE DYNAMIC LIST FOR UPDATES.
ASSOCIATED RESTRICTIONS:
MODIFICATIONS:
ROUTES:

FROM:

ORIG ROUTE - ORIGIN SEGMENTS

KATL >GRGIA ARNNY SJI J37 HRV KCEEE
TKNIQ MOLLR JCT J86 ELP
KCLT >CHOPZ ATL MGM J37 HRV KCEEE
TKNIQ MOLLR JCT J86 ELP
KMIA >BAGGS REMIS Y280 LEV KCEEE
TKNIQ MOLLR JCT J86 ELP
ZJX >CEW J2 SJI J37 HRV KCEEE TKNIQ
MOLLR JCT J86 ELP
ZJX KTPA >REMIS Y280 LEV KCEEE TKNIQ
MOLLR JCT J86 ELP
ZMA >DOLIE CIGAR Y290 LEV KCEEE
TKNIQ MOLLR JCT J86 ELP
ZMA >PATOY Q116 JAWJA CABLO DEFUN
J2 SJI J37 HRV KCEEE TKNIQ
MOLLR JCT J86 ELP
ZMA(-MIA -TPA) >DOLIE Y280 LEV KCEEE TKNIQ
MOLLR JCT J86 ELP
ZTL(-ATL -CLT -GSO) >MGM J37 HRV KCEEE TKNIQ MOLLR
JCT J86 ELP

TO:

DEST ROUTE - DESTINATION SEGMENTS

KLAS ELP J86 INW HAHA< RKSTR2
KLAX ELP J50 SS0 J4 MESSI ESTWD<

HLYWD1
KLGB ELP J50 SS0 J4 BXK EMLLD<
DSNEE5
KOAK ELP J86 BLD J92 BTY RUSME<
OAKES2
KPHX ELP DRRVR< PINNG1
KSAN ELP J2 HOGGZ< LUCKI1
KSFO ELP J86 BLD J92 BTY RUSME<
DYAMD5
KSJC ELP J86 BLD J92 BTY RUSME<
RAZRR4
KSLC ELP J86 BAVPE BCE< QWENN5
KSNA ELP J50 SS0 J4 BXK EMLLD<
DSNEE5

TMI ID: RRDCC051
081507-082130
22/06/08 15:07 DCCOPS.lxstn28

Advisory ID: 072

Reporting ARTCC: None
Advisory Effective Start Time: Wed Jun 08 18:04:00 UTC 2022
Advisory Effective End Time: Wed Jun 08 22:00:00 UTC 2022
Advisory Text: ATCSCC ADVZY 072 DCC 06/08/22 ROUTE RQD /FL
NAME: NE_TO_DFW_DAL
CONSTRAINED AREA: ZFW/ZME
REASON: WEATHER
INCLUDE TRAFFIC: KBUF/KCLE/KDTW/KJFK/KPHL/KPIT/KROC/ZBW/ZNY
DEPARTURES TO KDAL/KDFW
FACILITIES INCLUDED: ZBW/ZDC/ZFW/ZID/ZME/ZNY/ZOB
FLIGHT STATUS: ALL_FLIGHTS
VALID: ETD 081500 TO 082200
PROBABILITY OF EXTENSION: LOW
REMARKS: REPLACE ADVZY 065
ZNY/ZBW RTES BASED ON THE DFW_SEEVR_1_SOUTH_FLOW PLAYBOOK.

ASSOCIATED RESTRICTIONS:
MODIFICATIONS: REMOVES ZKC ZMP ZAU ZID. RTES FOR THE DEPT POINTS
ARE NOW DEFINED ON DFW_BEREE_NORTH_FLOW_PARTIAL.
NAME CHANGED FOR CLARITY.
ROUTES:

ORIG DEST ROUTE

KBUF KROC KDFW >ROD IIU BWG SQS YUYUN<
BEREE1
KBUF KROC KDAL >ROD IIU BWG SQS PUDJE<
REDDN4
KCLE KDAL >IIU BWG SQS PUDJE< REDDN4
KCLE KDFW >IIU BWG SQS YUYUN< BEREE1
KDTW KDAL >IIU BWG SQS PUDJE< REDDN4
KDTW KDFW >IIU BWG SQS YUYUN< BEREE1
KJFK KDAL >RBV Q430 SAAME J6 HVQ Q68
BWG SQS PUDJE< REDDN4
KJFK KDFW >RBV Q430 SAAME J6 HVQ Q68

BWG SQS YUYUN< BEREE1
KPHL KDAL >MXE PENSY J110 FLIRT J6
HVQ Q68 BWG SQS PUDJE<
REDDN4
KPHL KDFW >MXE PENSY J110 FLIRT J6
HVQ Q68 BWG SQS YUYUN<
BEREE1
KPIT KDAL >IIU BWG SQS PUDJE< REDDN4
KPIT KDFW >IIU BWG SQS YUYUN< BEREE1
ZBW KDAL >BAF Q406 BWZ J6 HVQ Q68
BWG SQS PUDJE< REDDN4
ZBW KDFW >BAF Q406 BWZ J6 HVQ Q68
BWG SQS YUYUN< BEREE1
ZNY(-JFK -PHL) KDAL >PARKE J6 HVQ Q68 BWG SQS
PUDJE< REDDN4
ZNY(-JFK -PHL) KDFW >PARKE J6 HVQ Q68 BWG SQS
YUYUN< BEREE1

TMI ID: RRDC049
081804-082200
22/06/08 18:04 DCCOPS.lxstn21

Advisory ID: 035

Reporting ARTCC: None
Advisory Effective Start Time: Wed Jun 08 13:14:00 UTC 2022
Advisory Effective End Time: Thu Jun 09 05:00:00 UTC 2022
Advisory Text: ATSCC ADVZY 035 DCC 06/08/22 FCA RQD
NAME: FCA003:NO_AR_ROUTES_TO_MCO_TPA_AREAS
CONSTRAINED AREA: ZJX/ZMA
REASON: OTHER
INCLUDE TRAFFIC: UNKN DEPARTURES TO
KISM/KLAL/KMCF/KMCO/KORL/KPIE/KSFB/KSPG/KSRQ/KTPA/K
TPF
FACILITIES INCLUDED: ZJX/ZMA/ZNY/ZBW/ZDC/ZOB/ZTL/CYZ/ZID
FLIGHT STATUS: ALL_FLIGHTS
VALID: FCA ENTRY TIME FROM 081600 TO 090500
PROBABILITY OF EXTENSION: MODERATE
REMARKS: SEE DYNAMIC LIST FOR UPDATES. IMPLEMENTED DUE TO MILITARY
ACTIVITIES (1600Z-0500Z) AND ROCKET LAUNCH ACTIVITIES
(1925Z-2300Z).
ASSOCIATED RESTRICTIONS:
MODIFICATIONS:
ROUTES:

ORIG DEST ROUTE

UNKN KMCO KORL KISM UPT RTE:DUE TO SUA
KSFB KTPA KSRQ ACTIVITY, THE AR ROUTES ARE
KPIE KMCF KLAL NOT AVAILABLE TO THESE
KTPF KSPG DESTINATIONS. STAKEHOLDERS
PLEASE FILE INLAND ROUTES.

TMI ID: RRDC035

081314-090500
22/06/08 13:14 DCCOPS.lxstn21

Advisory ID: 033

Reporting ARTCC: None
Advisory Effective Start Time: Wed Jun 08 12:54:00 UTC 2022
Advisory Effective End Time: Mon Jun 20 22:06:00 UTC 2022
Advisory Text: ATCSCC ADVZY 033 DCC 06/08/2022 VOLCANIC ACTIVITY BULLETIN - FUEGO
FVXX24 KNES 081254 WSI DDS:081257
VA ADVISORY
DTG: 20220608/1254Z

VAAC: WASHINGTON

VOLCANO: FUEGO 342090
PSN: N1428 W09052

AREA: GUATEMALA

SUMMIT ELEV: 12346 FT (3763 M)

ADVISORY NR: 2022/541

INFO SOURCE: GOES-16. WEBCAM. NWP MODELS.

ERUPTION DETAILS: FRQT VA EMS.

OBS VA DTG: 08/1220Z

OBS VA CLD: SFC/FL160 N1446 W09108 - N1428 W09052
- N1427 W09053 - N1441 W09112 - N1446 W09108 MOV
NW 20KT

FCST VA CLD +6HR: 08/1830Z SFC/FL160 N1450 W09112
- N1428 W09052 - N1427 W09053 - N1439 W09120 -
N1450 W09112

FCST VA CLD +12HR: 09/0030Z SFC/FL160 N1445
W09118 - N1428 W09052 - N1427 W09053 - N1435
W09122 - N1445 W09118

FCST VA CLD +18HR: 09/0630Z SFC/FL160 N1446
W09117 - N1428 W09052 - N1427 W09053 - N1435
W09122 - N1446 W09117

RMK: NUMEROUS VA EMS SEEN ON WEBCAM IMAGERY. G16
STLT IMAGERY SHOWS VA CLDS MOVG NW TO ABT 20 NMI
FM SUMMIF BFR DISPG AND WX CLDS OBSC VIEW. NWP
MDLS FCST ONLY SLGT CHGS IN WINDS THRU T+18HRS.
...HOSLEY

NXT ADVISORY: WILL BE ISSUED BY 20220608/1900Z

202206081254-202206081900

Advisory ID: 023

Reporting ARTCC: None

Advisory Effective Start Time: Wed Jun 08 11:04:00 UTC 2022

Advisory Effective End Time: Thu Jun 09 03:00:00 UTC 2022

Advisory Text: ATCSCC ADVZY 023 DCC 06/08/2022 TCA/HOTLINE ISSUE REQUEST PAGE ACTIVATION

EVENT TIME: 08/1100 - 09/0230

THE TCA/HOTLINE ISSUE REQUEST PAGE IS NOW OPEN. WEB PAGE USERS SHOULD SEND THEIR REQUEST MESSAGES TO THE PAGE FOR RESOLUTION.

PLEASE ENSURE ADEQUATE INFORMATION IS PROVIDED IN REQUESTS SUCH AS CATEGORY OF ISSUE, CALL SIGN, POSITION OF FLIGHT, TYPE OF ASSISTANCE REQUESTED, ETC TO ELIMINATE ANY MISINTERPRETATION.

081104-090300

22/06/08 11:04 DCCOPS.lxstn23

Advisory ID: 057

Reporting ARTCC: None

Advisory Effective Start Time: Wed Jun 08 15:44:00 UTC 2022

Advisory Effective End Time: Thu Jun 09 02:00:00 UTC 2022

Advisory Text: ATCSCC ADVZY 057 DCC 06/08/22 ROUTE FYI

NAME: ATL_CDRS_SWAP

CONSTRAINED AREA: ZTL

REASON: WEATHER

INCLUDE TRAFFIC: KATL DEPARTURES TO UNKN

FACILITIES INCLUDED: ZTL/ZJX/ZHU/ZME/ZID/ZDC

FLIGHT STATUS: ALL_FLIGHTS

VALID: ETD 081150 TO 090200

PROBABILITY OF EXTENSION: LOW

REMARKS: REPLACES ADVZY 028

ASSOCIATED RESTRICTIONS:

MODIFICATIONS:

ROUTES:

ORIG DEST ROUTE

KATL UNKN CDR RTE:DEPARTURES CAN

EXPECT CDRS/SWAP DUE TO

WEATHER. USERS SHOULD FILE

NORMAL ROUTES BUT FUEL

ACCORDINGLY.

081544-090200

22/06/08 15:44 DCCOPS.lxstn19

Advisory ID: 015

Reporting ARTCC: None

Advisory Effective Start Time: Wed Jun 08 09:33:00 UTC 2022

Advisory Effective End Time: Mon Jun 20 22:06:00 UTC 2022

Advisory Text: ATCSCC ADVZY 015 DCC 06/08/2022 VOLCANIC ACTIVITY BULLETIN - REVENTADOR

FVXX21 KNES 080933 WSI DDS:080934

VA ADVISORY

DTG: 20220608/0933Z

VAAC: WASHINGTON

VOLCANO: REVENTADOR 352010

PSN: S0005 W07739

AREA: ECUADOR

SUMMIT ELEV: 11686 FT (3562 M)

ADVISORY NR: 2022/457

INFO SOURCE: GOES-16. NWP MODELS. VOLCAT.

ERUPTION DETAILS: CONT VA EMS

OBS VA DTG: 08/0850Z

OBS VA CLD: SFC/FL160 S0000 W07758 - S0004 W07739
- S0007 W07758 - S0000 W07758 MOV W 5KT

FCST VA CLD +6HR: 08/1500Z SFC/FL160 S0000 W07759
- S0004 W07739 - S0008 W07758 - S0000 W07759

FCST VA CLD +12HR: 08/2100Z SFC/FL160 S0001
W07759 - S0004 W07739 - S0008 W07758 - S0001
W07759

FCST VA CLD +18HR: 09/0300Z NO VA EXP

RMK: CONT VA EMS OBS MOV W IN STLT IMAGERY. VA
FCST TO CONT W MOV THRU T+12HRS BEFORE DISP. VO
ACT MODERATE. ...FISHER

NXT ADVISORY: WILL BE ISSUED BY 20220608/1530Z

202206080933-202206081530

Advisory ID: 060

Affected Location: DCC

Reporting ARTCC: ZBW

Advisory Effective Start Time: Wed Jun 08 15:56:00 UTC 2022

Advisory Effective End Time: Thu Jun 09 05:30:00 UTC 2022

Advisory Text: ATSCC ADVZY 060 DCC/ZBW 06/08/2022 ZBW INTERNATIONAL DEPARTURE SWAP
STATEMENT_FYI

06-08-2022 TO 06-09-2022

THIS STATEMENT IS FOR ADVISORY PURPOSES ONLY. CUSTOMERS ARE
ENCOURAGED TO FILE PUBLISHED TRACK ROUTINGS AND ANTICIPATE THE
SPECIFIED ALTERNATE ROUTINGS AS WEATHER IMPACTS NORMAL ROUTES.
PLEASE DO NOT FILE ALTERNATE ROUTES UNLESS ADVISED.

PLANNED ALTERNATE DEPARTURE ROUTES:

JFK: IF MERIT IS NOT AVAILABLE FILE VIA BETTE ACK DIRECT (OEP)
IF MERIT/BETTE ARE NOT AVAILABLE FILE VIA SHIPP Y487 ISLES JENYY
VITOL (OEP) OR GAYEL STOMP HNK DIRECT (OEP)

EWR: IF MERIT IS NOT AVAILABLE FILE VIA ELVAE COL DIXIE Y481 POPPN
ISLES JENYY VITOL DIRECT (OEP)
IF MERIT/ELVAE ARE NOT AVAILABLE FILE VIA GAYEL STOMP HNK DIRECT
(OEP)

PHL: IF DITCH IS NOT AVAILIABLE FILE VIA OOD TEBEE HAYDO SIE B24
LYNUS LARGE JENYY VITOL DIRECT (OEP) OR
EXPECT PLAYBOOK ROUTING VIA "ZBW NATS ESCAPE VIA HNK/SYR"

IAD/DCA: IF SWANN/DONIL IS NOT AVAILIABLE FILE VIA AGARD SIE B24
LYNUS LARGE JENYY DIRECT (OEP) OR
EXPECT PLAYBOOK ROUTING VIA "ZBW NATS ESCAPE VIA HNK/SYR"

ATL/CLT/DFW/IAH: IF NORMAL ROUTES ARE NOT AVAILABLE EXPECT PLAYBOOK
ROUTING VIA "ZBW NATS ESCAPE VIA HNK/SYR"

ANY QUESTIONS CONTACT ZBW TMU AT 603-879-6666

081556-090530
22/06/08 15:56 DCCOPS.lxstn19

Advisory ID: 080

Reporting ARTCC: None

Advisory Effective Start Time: Wed Jun 08 18:44:00 UTC 2022

Advisory Effective End Time: Mon Jun 20 22:06:00 UTC 2022

Advisory Text: ATCSCC ADVZY 080 DCC 06/08/2022 VOLCANIC ACTIVITY BULLETIN - FUEGO

FVXX24 KNES 081844 WSI DDS:081851

VA ADVISORY

DTG: 20220608/1844Z

VAAC: WASHINGTON

VOLCANO: FUEGO 342090

PSN: N1428 W09052

AREA: GUATEMALA

SUMMIT ELEV: 12346 FT (3763 M)

ADVISORY NR: 2022/542

INFO SOURCE: GOES-16. WEBCAM. NWP MODELS.

ERUPTION DETAILS: ONGOING VA EMS.

OBS VA DTG: 08/1820Z

OBS VA CLD: SFC/FL160 N1441 W09104 - N1428 W09052
- N1428 W09054 - N1435 W09108 - N1441 W09104 MOV

NW 15KT

FCST VA CLD +6HR: 09/0030Z SFC/FL160 N1441 W09104
- N1428 W09052 - N1428 W09053 - N1434 W09108 -
N1441 W09104

FCST VA CLD +12HR: 09/0630Z SFC/FL160 N1439
W09106 - N1428 W09052 - N1428 W09052 - N1431
W09110 - N1439 W09106

FCST VA CLD +18HR: 09/1230Z SFC/FL160 N1439
W09108 - N1429 W09052 - N1428 W09052 - N1431
W09112 - N1439 W09108

RMK: INTERMITTENT VA EMS NOTED IN VOLCAT PROD BUT
NOT SEEN IN WEBCAM DUE TO DENSE WX CLDS. VA MOV
TO WNW OF SUMMIT. WILL MOV MORE TO THE W WITH
TIME. ...LEE

NXT ADVISORY: WILL BE ISSUED BY 20220609/0045Z

202206081844-202206090045

Advisory ID: 012

Reporting ARTCC: None

Advisory Effective Start Time: Wed Jun 08 07:33:00 UTC 2022

Advisory Effective End Time: Mon Jun 20 22:06:00 UTC 2022

Advisory Text: ATSCC ADVZY 012 DCC 06/08/2022 VOLCANIC ACTIVITY BULLETIN -
SEMISOPOCHNOI

FVAK21 PAWU 080734 WSI DDS:080734

VAAAK1

VA ADVISORY

DTG: 20220608/0733Z

VAAC: ANCHORAGE

VOLCANO: SEMISOPOCHNOI 311060

PSN: N5156 E17935

AREA: ALEUTIAN ISLANDS

SUMMIT ELEV: 4006 FT (1221 M)

ADVISORY NR: 2022/039

INFO SOURCE: HIMAWARI/GOES 17/WEBCAMERA

AVIATION COLOR CODE: ORANGE

ERUPTION DETAILS: CONTINUOUS LOW-LVL EMISSIONS.

OBS VA DTG: 08/0733Z

OBS VA CLD: SFC/FL050 N5202 W17957 - N5013 E17826 - N5007 E17532
- N5038 E17547 - N5111 E17743 - N5201 E17913 - N5202 W17957 MOV
SSW 20KT

FCST VA CLD +6HR: 08/1333Z SFC/FL050 N5204 W17956 - N4935 E17754
- N4930 E17506 - N5014 E17545 - N5038 E17729 - N5204 E17906 -
N5204 W17956

FCST VA CLD +12HR: 08/1933Z SFC/FL050 N5204 E17960 - N4854
E17726 - N4923 E17442 - N4954 E17516 - N4952 E17651 - N5204
E17901 - N5204 E17960

FCST VA CLD +18HR: 09/0133Z SFC/FL050 N5202 W17957 - N4828
E17711 - N4906 E17540 - N5202 E17903 - N5202 W17957 - N5202 W17957

RMK: BREAKS IN THE METEOROLOGICAL CLDS AT THE VOLCANO SUMMIT HAVE
BEGUN
AND VA IS OBSERVED IN WEBCAMERA. ADNLV THERE ARE VA SIGNALS OBSERVED
IN
VARIOUS SATELLITE IMAGERIES ARCING TO THE SW OF THE VOLCANO. ...JAM

NXT ADVISORY: WILL BE ISSUED BY 20220608/1333Z
202206080733-202206081333

Advisory ID: 062

Reporting ARTCC: None

Advisory Effective Start Time: Wed Jun 08 16:16:00 UTC 2022

Advisory Effective End Time: Wed Jun 08 21:00:00 UTC 2022

Advisory Text: ATSCC ADVZY 062 DCC 06/08/22 REROUTE CANCELLATION

FCA001:NE_TO_FLORIDA_VIA_J48_3_PARTIAL HAS BEEN CANCELLED.

REMARKS: CANCELS ADVZY 040

ASSOCIATED RESTRICTIONS:

081616-082100

22/06/08 16:16 DCCOPS.lxstn11

Advisory ID: 071

Reporting ARTCC: None

Advisory Effective Start Time: Wed Jun 08 18:03:00 UTC 2022

Advisory Effective End Time: Wed Jun 08 22:00:00 UTC 2022

Advisory Text: ATSCC ADVZY 071 DCC 06/08/22 ROUTE RQD /FL

NAME: DFW_EAST_2_SOUTH_FLOW_MODIFIED

CONSTRAINED AREA: ZME/ZFW

REASON: WEATHER

INCLUDE TRAFFIC: KATL/KBWI/KCLT/KDCA/KGSO/KIAD/KMIA/KORF/KRDU/KRIC/K

ROA/KTPA/ZJX/ZMA/ZTL DEPARTURES TO KDAL/KDFW

FACILITIES INCLUDED: ZDC/ZFW/ZHU/ZJX/ZMA/ZME/ZTL

FLIGHT STATUS: ALL_FLIGHTS

VALID: ETD 081500 TO 082200

PROBABILITY OF EXTENSION: MODERATE

REMARKS: REPLACES ADVZY 046

EXPECT DEVIATIONS FOR WX IN ZTL.

ASSOCIATED RESTRICTIONS:

MODIFICATIONS: ALL RTES MODIFIED TO GO OVER AEX THEN UTILIZE SE GATE.

ROUTES:

ORIG DEST ROUTE

KATL KDAL >STEIT MEI MCB AEX PNUTS<
REDDN4
KATL KDFW >STEIT MEI MCB AEX PNUTS<
BEREE1
KCLT KDAL >CHOPZ ATL J239 MEI MCB AEX
PNUTS< REDDN4
KCLT KDFW >CHOPZ ATL J239 MEI MCB AEX
PNUTS< BEREE1
KGSO KDAL >IPTAY CHOPZ ATL J239 MEI
MCB AEX PNUTS< REDDN4
KGSO KDFW >IPTAY CHOPZ ATL J239 MEI
MCB AEX PNUTS< BEREE1
KMIA KDAL >BAGGS REMIS Y280 LEV AEX
PNUTS< REDDN4
KMIA KDFW >BAGGS REMIS Y280 LEV AEX
PNUTS< BEREE1
KRIC KORF KRDU KDFW >IPTAY CHOPZ ATL J239 MEI
KROA MCB AEX PNUTS< BEREE1
KRIC KORF KRDU KDAL >IPTAY CHOPZ ATL J239 MEI
KROA MCB AEX PNUTS< REDDN4
ZJX KDFW >CEW SJI MCB AEX PNUTS<
BEREE1
ZJX KDAL >CEW SJI MCB AEX PNUTS<
REDDN4
ZJX KTPA KDAL >REMIS Y280 LEV AEX PNUTS<
REDDN4
ZJX KTPA KDFW >REMIS Y280 LEV AEX PNUTS<
BEREE1
ZMA(-MIA -TPA) KDAL >DOLIE Y280 LEV AEX PNUTS<
REDDN4
ZMA KDFW >DOLIE CIGAR Y290 LEV AEX
PNUTS< BEREE1
ZMA KDAL >DOLIE CIGAR Y290 LEV AEX
PNUTS< REDDN4
ZMA(-MIA -TPA) KDFW >DOLIE Y280 LEV AEX PNUTS<
BEREE1
ZMA KDAL >PAT0Y Q116 JAWJA CABLO
DEFUN J2 SJI MCB AEX PNUTS<

REDDN4
ZMA KDFW >PAT0Y Q116 JAWJA CABLO
DEFUN J2 SJI MCB AEX PNUTS<
BEREE1
ZTL(-ATL -CLT KDAL >ATL J239 MEI MCB AEX
-GS0) PNUTS< REDDN4
ZTL(-ATL -CLT KDFW >ATL J239 MEI MCB AEX
-GS0) PNUTS< BEREE1
KIAD KDCA KBWI KDFW >GLANC COLZI Q52 CHOPZ ATL
J239 MEI MCB AEX PNUTS<

BEREE1
KIAD KDCA KBWI KDAL >GLANC COLZI Q52 CHOPZ ATL
J239 MEI MCB AEX PNUITS<
REDDN4

TMI ID: RRDCC046
081803-082200
22/06/08 18:03 DCCOPS.lxstn21

Advisory ID: 031

Reporting ARTCC: None
Advisory Effective Start Time: Wed Jun 08 12:35:00 UTC 2022
Advisory Effective End Time: Mon Jun 20 22:06:00 UTC 2022
Advisory Text: ATSCC ADVZY 031 DCC 06/08/2022 VOLCANIC ACTIVITY BULLETIN - SANGAY
FVXX20 KNES 081235 WSI DDS:081237
VA ADVISORY
DTG: 20220608/1235Z

VAAC: WASHINGTON

VOLCANO: SANGAY 352090
PSN: S0200 W07820

AREA: ECUADOR

SUMMIT ELEV: 17159 FT (5230 M)

ADVISORY NR: 2022/583

INFO SOURCE: GOES-16. NWP MODELS.

ERUPTION DETAILS: OCNL VA EMS.

OBS VA DTG: 08/1210Z

OBS VA CLD: SFC/FL220 S0149 W07834 - S0200 W07819
- S0202 W07819 - S0155 W07838 - S0149 W07834 MOV
NW 10KT

FCST VA CLD +6HR: 08/1800Z SFC/FL220 S0148 W07846
- S0159 W07819 - S0201 W07819 - S0202 W07847 -
S0148 W07846

FCST VA CLD +12HR: 09/0000Z SFC/FL220 S0142
W07843 - S0159 W07819 - S0201 W07819 - S0155
W07848 - S0142 W07843

FCST VA CLD +18HR: 09/0600Z SFC/FL220 S0138
W07838 - S0159 W07819 - S0202 W07820 - S0149
W07846 - S0138 W07838

RMK: VA CLD OBSD EXTDG ABT 20 NMI NW OF SUMMIT.
HOTSPOT EVIDENT. NWP MDLS FCST VA TO MOV W BY T+6
THEN FCST WINDS TO VEER THRU T+18. ...HOSLEY

NXT ADVISORY: WILL BE ISSUED BY 20220608/1830Z

202206081235-202206081830

Advisory ID: 079

Reporting ARTCC: None

Advisory Effective Start Time: Wed Jun 08 18:43:00 UTC 2022

Advisory Effective End Time: Wed Jun 08 23:30:00 UTC 2022

Advisory Text: ATCSCC ADVZY 079 DCC 06/08/22 ROUTE RQD /FL

NAME: DFW_VKTRY_PARTIAL

CONSTRAINED AREA: ZFW/ZKC

REASON: WEATHER

INCLUDE TRAFFIC: KLAS/KPHX/KSAN/KTUS/ZAB/ZLA DEPARTURES TO KDAL/KDFW

FACILITIES INCLUDED: ZAB/ZFW/ZLA

FLIGHT STATUS: ALL_FLIGHTS

VALID: ETD 081330 TO 082330

PROBABILITY OF EXTENSION: MODERATE

REMARKS: REPLACES AND MODIFIES ADVZY 067.

ASSOCIATED RESTRICTIONS:

MODIFICATIONS: REMOVED ZLC ZOA ZSE DEPT FROM PLAY. EXTENDS TIME.

ROUTES:

ORIG DEST ROUTE

KLAS KDFW >GUP J72 ABQ J15 CME BGS

GEEKY< BOOVE5

KLAS KDAL >GUP J72 ABQ J15 CME BGS

BGTOE< BACHR4

KPHX KTUS KDFW >EWM J4 INK GEEKY< BOOVE5

KPHX KTUS KDAL >EWM J4 INK BGTOE< BACHR4

KSAN KDFW >IPL J2 GBN J50 SS0 J4 INK

GEEKY< BOOVE5

KSAN KDAL >IPL J2 GBN J50 SS0 J4 INK

BGTOE< BACHR4

ZAB(-PHX -TUS) KDAL >CME BGS BGTOE< BACHR4

ZAB(-PHX -TUS) KDFW >CME BGS GEEKY< BOOVE5

ZLA(-LAS -SAN) KDFW >BLH J169 TFD J50 SS0 J4

INK GEEKY< BOOVE5

ZLA(-LAS -SAN) KDAL >BLH J169 TFD J50 SS0 J4

INK BGTOE< BACHR4

TMI ID: RRDCC032

081843-082330

22/06/08 18:43 DCCOPS.lxstn22

Advisory ID: 038

Affected Location: DCC

Reporting ARTCC: ZDV

Advisory Effective Start Time: Mon Jun 06 15:47:00 UTC 2022

Advisory Effective End Time: Fri Jul 01 03:30:00 UTC 2022

Advisory Text: ATCSCC ADVZY 038 DCC/ZDV 06/06/2022 DEN SWAP IMPLEMENTATION PLAN_FYI

EVENT TIME: 06/2000 - 07/0300

THIS ADVISORY IS FOR PLANNING PURPOSES ONLY.

SWAP STATEMENT: SEVERE WEATHER AVOIDANCE PLANS ARE POSSIBLE FOR THE ZDV AIRSPACE.

DEN AIRPORT/GATES ESTIMATED IMPACT TIME FRAME : 2000Z TO 0300Z

WIDELY SCATTERED SHRA & TSRA AREA EXPECTED TO BUILD AND IMPACT THE DEN TERMINAL AREA.

PLANNED ALTERNATE DEPARTURE ROUTES:
CDRS FOR DEN DEP GATES WILL BE UTILIZED AS ROUTES ARE IMPACTED.

PLANNED ALTERNATE ARRIVAL ROUTES:
FLIGHTS INTO THE DEN AIRPORT MAY BE SWAPPED TACTICALLY BETWEEN DIFFERENT ARRIVAL CORNERPOSTS AS ARRIVAL GATES ARE IMPACTED.

FUEL ADVISORY:
USERS SHOULD FUEL ACCORDINGLY FOR CDRS AND TACTICAL ARRIVAL GATE RRTES, AS WELL AS POSSIBLE HOLDING DUE TO TS/MICROBURSTS AT THE FIELD.

061547-010330

22/06/06 15:47 DCCOPS.lxstn28

Advisory ID: 071

Reporting ARTCC: None

Advisory Effective Start Time: Tue Jun 07 18:03:00 UTC 2022

Advisory Effective End Time: Mon Jun 20 22:06:00 UTC 2022

Advisory Text: ATCSCC ADVZY 071 DCC 06/07/2022 VOLCANIC ACTIVITY BULLETIN - SANGAY

FVXX20 KNES 071803 WSI DDS:071810

VA ADVISORY

DTG: 20220607/1803Z

VAAC: WASHINGTON

VOLCANO: SANGAY 352090

PSN: S0200 W07820

AREA: ECUADOR

SUMMIT ELEV: 17159 FT (5230 M)

ADVISORY NR: 2022/579

INFO SOURCE: GOES-16. WEBCAM. NWP MODELS.

ERUPTION DETAILS: ONGOING VA EMS.

OBS VA DTG: 07/1740Z

OBS VA CLD: SFC/FL210 S0123 W07853 - S0200 W07819
- S0201 W07819 - S0158 W07857 - S0123 W07853 MOV
NW 10KT

FCST VA CLD +6HR: 07/2330Z SFC/FL210 S0130 W07857
- S0200 W07819 - S0200 W07819 - S0159 W07900 -
S0130 W07857

FCST VA CLD +12HR: 08/0530Z SFC/FL210 S0140
W07859 - S0200 W07819 - S0201 W07820 - S0204
W07901 - S0140 W07859

FCST VA CLD +18HR: 08/1130Z SFC/FL210 S0146
W07902 - S0159 W07819 - S0201 W07819 - S0204
W07903 - S0146 W07902

RMK: VA EMS NOTED IN STLT IMAGERY AND IN WEB CAM.
VA MOV TO WNW OF SUMMIT. THIS GENERAL MOTION WITH
A SLIGHT SHIFT W EXPECTED TO CONT THRU THE
PERIOD. ...LEE

NXT ADVISORY: WILL BE ISSUED BY 20220608/0000Z
202206071803-202206080000

Advisory ID: 067

Reporting ARTCC: None

Advisory Effective Start Time: Wed Jun 08 17:02:00 UTC 2022

Advisory Effective End Time: Wed Jun 08 20:30:00 UTC 2022

Advisory Text: ATSCC ADVZY 067 DCC 06/08/22 ROUTE RQD /FL

NAME: DFW_VKTRY_PARTIAL

CONSTRAINED AREA: ZFW/ZKC

REASON: WEATHER

INCLUDE TRAFFIC: CZE/CZV/KLAS/KPHX/KSAN/KTUS/SLC/ZAB/ZLA/ZLC/ZOA/ZSE

DEPARTURES TO KDAL/KDFW

FACILITIES INCLUDED: CZE/CZV/ZAB/ZDV/ZFW/ZLA/ZLC/ZOA/ZSE

FLIGHT STATUS: ALL_FLIGHTS

VALID: ETD 081330 TO 082030

PROBABILITY OF EXTENSION: MODERATE

REMARKS: REPLACES ADVZY 056.

ASSOCIATED RESTRICTIONS:

MODIFICATIONS: REMOVED ZDV DEPT FROM PLAY.

ROUTES:

ORIG DEST ROUTE

KLAS KDFW >GUP J72 ABQ J15 CME BGS

GEEKY< BOOVE5

KLAS KDAL >GUP J72 ABQ J15 CME BGS

BGTOE< BACHR4

KPHX KTUS KDFW >EWM J4 INK GEEKY< BOOVE5

KPHX KTUS KDAL >EWM J4 INK BGTOE< BACHR4

KSAN KDFW >IPL J2 GBN J50 SS0 J4 INK

GEEKY< BOOVE5

KSAN KDAL >IPL J2 GBN J50 SS0 J4 INK

BGTOE< BACHR4

ZAB(-PHX -TUS) KDAL >CME BGS BGTOE< BACHR4

ZAB(-PHX -TUS) KDFW >CME BGS GEEKY< BOOVE5

ZLA(-LAS -SAN) KDFW >BLH J169 TFD J50 SS0 J4

INK GEEKY< BOOVE5

ZLA(-LAS -SAN) KDAL >BLH J169 TFD J50 SSO J4
INK BGT0E< BACHR4
SLC KDAL >TCH HVE RSK J15 CME BGS
BGT0E< BACHR4
SLC KDFW >TCH HVE RSK J15 CME BGS
GEEKY< BOOVE5
ZLC KDAL >JNC J15 CME BGS BGT0E<
BACHR4
ZLC KDFW >JNC J15 CME BGS GEEKY<
BOOVE5
ZOA KDFW >MLF J58 RSK J15 CME BGS
GEEKY< BOOVE5
ZOA KDAL >MLF J58 RSK J15 CME BGS
BGT0E< BACHR4
ZSE CZV CZE KDAL >TCH J15 CME BGS BGT0E<
BACHR4
ZSE CZV CZE KDFW >TCH J15 CME BGS GEEKY<
BOOVE5

TMI ID: RRDCC032
081702-082030
22/06/08 17:02 DCCOPS.lxstn21

Advisory ID: 055

Reporting ARTCC: None
Advisory Effective Start Time: Wed Jun 08 15:40:00 UTC 2022
Advisory Effective End Time: Thu Jun 09 15:00:00 UTC 2022
Advisory Text: ATSCC ADVZY 055 DCC 06/08/2022 US/MEXICO OUTLOOK_FYI
EVENT TIME: 08/1430 - 09/1430

TERMINAL CONSTRAINTS:

MMX - NONE
MMSD - NONE
MMUN - EXPANDED MIT DUE TO VOLUME
MMPR - NONE

ENROUTE CONSTRAINTS:

ZMZ - NONE
ZMO - NONE
ZMR - EXPANDED MIT TO MMUN DUE TO VOLUME
ZMC - NONE

NO SIGNIFICANT TRAFFIC MANAGEMENT INITIATIVES EXPECTED.

VOLCANIC ACTIVITY ASSOCIATED WITH POPOCATEPETL VOLCANO. REFER TO
MOST RECENT VA ADVZY FOR UPDATES.

TELCON PHONE NUMBER: (540) 359-3200 PIN 2444#
NEXT PLANNING TELCON 09/1430Z.

081540-091500
22/06/08 15:40 DCCOPS.lxstn28

Advisory ID: 075

Reporting ARTCC: None

Advisory Effective Start Time: Tue Jun 07 19:13:00 UTC 2022

Advisory Effective End Time: Mon Jun 20 22:06:00 UTC 2022

Advisory Text: ATCSCC ADVZY 075 DCC 06/07/2022 VOLCANIC ACTIVITY BULLETIN - FUEGO

FVXX24 KNES 071913 WSI DDS:071915

VA ADVISORY

DTG: 20220607/1913Z

VAAC: WASHINGTON

VOLCANO: FUEGO 342090

PSN: N1428 W09052

AREA: GUATEMALA

SUMMIT ELEV: 12346 FT (3763 M)

ADVISORY NR: 2022/538

INFO SOURCE: GOES-16. WEBCAM. NWP MODELS.

ERUPTION DETAILS: POSSIBLE ONGOING VA EMS.

OBS VA DTG: 07/1850Z

OBS VA CLD: SFC/FL160 N1451 W09102 - N1430 W09051

- N1428 W09055 - N1447 W09110 - N1451 W09102 MOV

NW 15KT

FCST VA CLD +6HR: 08/0100Z SFC/FL160 N1444 W09109

- N1429 W09052 - N1428 W09055 - N1435 W09112 -

N1444 W09109

FCST VA CLD +12HR: 08/0700Z SFC/FL160 N1440

W09112 - N1429 W09051 - N1426 W09052 - N1431

W09114 - N1440 W09112

FCST VA CLD +18HR: 08/1300Z NO VA EXP

RMK: INTERMITTENT EMS FM EARLIER CAN NO LONGER BE

SEEN IN STLT OR WEB CAM IMAGERY DUE TO DENSE CLD

COVER. HOWEVER, ACT IS LIKELY ONGOING DUE TO PAST

RECENT HIST. VA MOV TO NW OF SUMMIT. ...LEE

NXT ADVISORY: WILL BE ISSUED BY 20220608/0115Z

202206071913-202206080115

Advisory ID: 003

Reporting ARTCC: None

Advisory Effective Start Time: Wed Jun 08 00:54:00 UTC 2022

Advisory Effective End Time: Mon Jun 20 22:06:00 UTC 2022

Advisory Text: ATCSCC ADVZY 003 DCC 06/08/2022 VOLCANIC ACTIVITY BULLETIN - FUEGO

FVXX24 KNES 080054 WSI DDS:080056

VA ADVISORY

DTG: 20220608/0054Z

VAAC: WASHINGTON

VOLCANO: FUEGO 342090

PSN: N1428 W09052

AREA: GUATEMALA

SUMMIT ELEV: 12346 FT (3763 M)

ADVISORY NR: 2022/539

INFO SOURCE: GOES-16. WEBCAM. NWP MODELS.

ERUPTION DETAILS: ONGOING VA EMS.

OBS VA DTG: 08/0030Z

OBS VA CLD: SFC/FL160 N1438 W09111 - N1428 W09052
- N1428 W09052 - N1427 W09112 - N1438 W09111 MOV
W 15KT

FCST VA CLD +6HR: 08/0630Z SFC/FL160 N1440 W09110
- N1428 W09052 - N1428 W09053 - N1432 W09113 -
N1440 W09110

FCST VA CLD +12HR: 08/1230Z SFC/FL160 N1441
W09108 - N1429 W09052 - N1428 W09053 - N1431
W09113 - N1441 W09108

FCST VA CLD +18HR: 08/1830Z NO VA EXP

RMK: ALTHOUGH RECENT WEB CAM AND STLT IMAGERY HAS
BECOME OBSCURED BY DENSE WX CLDS, VA COULD BE
SEEN IN EARLIER SCENES AND ACT IS PRESUMED
ONGOING. VA MOV TO W AND WNW OF SUMMIT. ...LEE

NXT ADVISORY: WILL BE ISSUED BY 20220608/0700Z
202206080054-202206080700

Advisory ID: 024

Reporting ARTCC: None

Advisory Effective Start Time: Wed Jun 08 11:11:00 UTC 2022

Advisory Effective End Time: Mon Jun 20 22:06:00 UTC 2022

Advisory Text: ATSCC ADVZY 024 DCC 06/08/2022 VOLCANIC ACTIVITY BULLETIN - SANGAY

FVXX20 KNES 081111 WSI DDS:081113

VA ADVISORY

DTG: 20220608/1111Z

VAAC: WASHINGTON

VOLCANO: SANGAY 352090

PSN: S0200 W07820

AREA: ECUADOR

SUMMIT ELEV: 17159 FT (5230 M)

ADVISORY NR: 2022/582

INFO SOURCE: GOES-16. NWP MODELS.

ERUPTION DETAILS: PSBL VA EMS.

OBS VA DTG: 08/1040Z

OBS VA CLD: SFC/FL210 S0200 W07819 - S0202 W07819
- S0206 W07835 - S0200 W07835 - S0200 W07819 MOV
W 10KT

FCST VA CLD +6HR: 08/1630Z SFC/FL210 S0158 W07840
- S0159 W07819 - S0201 W07819 - S0208 W07840 -
S0158 W07840

FCST VA CLD +12HR: 08/2230Z NO VA EXP

FCST VA CLD +18HR: 09/0430Z NO VA EXP

RMK: VA CLD PSBLY OBSD MOVG W AMONG WX CLD CVR.
HOTSPOT CLRLY EVIDENT AS WELL. NWP MDLS FCST
LTLCG IN WINDS THRU T+6HRS. ...HOSLEY

NXT ADVISORY: WILL BE ISSUED BY 20220608/1715Z

202206081111-202206081715

Advisory ID: 089

Reporting ARTCC: None

Advisory Effective Start Time: Tue Jun 07 22:05:00 UTC 2022

Advisory Effective End Time: Mon Jun 20 22:06:00 UTC 2022

Advisory Text: ATCSCC ADVZY 089 DCC 06/07/2022 VOLCANIC ACTIVITY BULLETIN -
REVENTADOR

FVXX21 KNES 072205 WSI DDS:072206

VA ADVISORY

DTG: 20220607/2205Z

VAAC: WASHINGTON

VOLCANO: REVENTADOR 352010

PSN: S0005 W07739

AREA: ECUADOR

SUMMIT ELEV: 11686 FT (3562 M)

ADVISORY NR: 2022/455

INFO SOURCE: GOES-16. WEBCAM. NWP MODELS.

ERUPTION DETAILS: POSSIBLE ONGOING EMS.

OBS VA DTG: 07/2140Z

OBS VA CLD: SFC/FL160 N0007 W07750 - S0005 W07739
- S0006 W07740 - N0001 W07755 - N0007 W07750 MOV
NW 5KT

FCST VA CLD +6HR: 08/0330Z SFC/FL160 N0007 W07751
- S0005 W07739 - S0005 W07740 - N0000 W07754 -
N0007 W07751

FCST VA CLD +12HR: 08/0930Z NO VA EXP

FCST VA CLD +18HR: 08/1530Z NO VA EXP

RMK: VA NOT SEEN DUE TO DENSE CLD COVER NOTED IN
STLT AND WEB CAM IMAGERY. HOWEVER, RECENT PAST
HIST SUGGESTS ONGOING ACT. VA MOV TO WNW OR NW OF
SUMMIT AS PER NWP MDLS. ...LEE

NXT ADVISORY: WILL BE ISSUED BY 20220608/0400Z
202206072205-202206080400

Advisory ID: 021

Reporting ARTCC: DCC

Advisory Effective Start Time: Fri Jun 03 12:30:00 UTC 2022

Advisory Effective End Time: Sat Jun 11 12:15:00 UTC 2022

Advisory Text: ATSCC ADVZY 021 DCC 06/03/2022 CARIBBEAN OUTLOOK_FYI

EVENT TIME: 03/1215 - 04/1215

TERMINAL CONSTRAINTS:

-NONE

ENROUTE CONSTRAINTS:

-NONE

1. AFPs

-NONE

2. ENROUTE TMI's

-NONE

3. ROUTES

-NONE

4. ANSP ISSUES/CONCERNS:

--NONE

POTENTIAL TROPICAL CYCOLE ONE (ALEX)
IMPACTING FLORIDA KEYS-CUBA

**REFER TO CURRENT NOTAMS AND ADVZYS, INCLUDING NHC (NATIONAL
HURRICANE CENTER) PUBLIC ADVISORIES FOR UPDATES.**

**REFER TO THE FOLLOWING WEBSITE FOR THE LATEST MEXICAN,
CARIBBEAN, SOUTH AMERICAN INFORMATION/IMPACTS**

<https://www.cadenaois.org/>

TELCON PHONE NUMBER: (540)359-3200 PIN 2316#

NEXT CARIBBEAN TELCON: 10/1215Z.

031230-111215

22/06/03 12:30 DCCOPS.lxstn22

Advisory ID: 039

Affected Location: DCC

Reporting ARTCC: ZNY

Advisory Effective Start Time: Wed Jun 08 13:34:00 UTC 2022

Advisory Effective End Time: Thu Jun 09 02:30:00 UTC 2022

Advisory Text: ATCSCC ADVZY 039 DCC/ZNY 06/08/2022 ZNY_SWAP_STATEMENT_FYI

EVENT TIME: 08/1900 - 09/0200

CONSTRAINED FACILITIES: ZNY

THIS ADVISORY IS FOR PLANNING PURPOSES ONLY. CUSTOMERS ARE
ENCOURAGED TO COMPLY WITH ALL ATCSCC ROUTE ADVISORIES. IF NO ATCSCC
ROUTE ADVISORIES ARE IN EFFECT, CUSTOMERS ARE ENCOURAGED TO FILE
PUBLISHED CDR'S AND NRP PROCEDURES AROUND KNOWN FORECASTED WEATHER.

THE FOLLOWING DESTINATIONS: ATL/CLT/MDW/ORD SHOULD FILE NORMAL
ROUTES. ZNY/ATCSCC WILL PROVIDE ALTERNATE ROUTES TO THESE
DESTINATIONS AS NEEDED.

SWAP STATEMENT:

SEVERE WEATHER AVOIDANCE PLANS ARE POSSIBLE FOR THE ZNY AREA AFTER
2000Z.

EXPECTED IMPACT AREA(S): CLUSTERS OF TS DVLPG W AND SW OF ZNY,
EVENTUALLY MOVING INTO ZNY AFT 00Z. IMPACTS TO J48 THRU Q75 PSBL
OUTSIDE OF ZNY.

AZEU-PAEPR-HANRI (L453-Y493) IMPACTS ARE: NOT EXPECTED

DITCH IMPACTS ARE: NOT EXPECTED

INTERNATIONAL DEPARTURES (EAST GATES) IMPACTS ARE: NOT EXPECTED

PLANNED ALTERNATE DEPARTURE ROUTES: SERMN, PHLER

POSSIBLE REROUTES / CDR'S WILL BE PROVIDED AS NECESSARY.

ZNY HOTLINE POSSIBLE AFT 2100Z: 540-359-3200 PIN #2778

TOMORROW MORNING SWAP OUTLOOK: POSSIBLE

081334-090230

Advisory ID: 075

Reporting ARTCC: None
Advisory Effective Start Time: Wed Jun 08 18:19:00 UTC 2022
Advisory Effective End Time: Thu Jun 09 02:00:00 UTC 2022
Advisory Text: ATCCSCC ADVZY 075 DCC 06/08/22 ROUTE FYI
NAME: ORD_MDW_CDR_SWAP
CONSTRAINED AREA: ZAU
REASON: WEATHER
INCLUDE TRAFFIC: KMDW/KORD DEPARTURES TO UNKN
FACILITIES INCLUDED: ZAU/ZMP/ZOB/ZID/ZKC
FLIGHT STATUS: ALL_FLIGHTS
VALID: ETD 081310 TO 090200
PROBABILITY OF EXTENSION: LOW
REMARKS: REPLACES AND EXTENDS ADVZY 034
ASSOCIATED RESTRICTIONS:
MODIFICATIONS:
ROUTES:

ORIG DEST ROUTE

KORD KMDW UNKN CDR RTE:DEPARTURES CAN
EXPECT CDRS/SWAP DUE TO
WEATHER. USERS SHOULD FILE
NORMAL ROUTES BUT FUEL
ACCORDINGLY.

081819-090200
22/06/08 18:19 DCCOPS.lxstn22

Advisory ID: 056

Reporting ARTCC: None
Advisory Effective Start Time: Wed Jun 08 15:42:00 UTC 2022
Advisory Effective End Time: Wed Jun 08 20:30:00 UTC 2022
Advisory Text: ATCCSCC ADVZY 056 DCC 06/08/22 ROUTE RQD /FL
NAME: DFW_VKTRY_PARTIAL
CONSTRAINED AREA: ZFW/ZKC
REASON: WEATHER
INCLUDE TRAFFIC: CZE/CZV/KLAS/KPHX/KSAN/KTUS/SLC/ZAB/ZDV/ZLA/ZLC/ZOA
/ZSE DEPARTURES TO KDAL/KDFW
FACILITIES INCLUDED: CZE/CZV/ZAB/ZDV/ZFW/ZLA/ZLC/ZOA/ZSE
FLIGHT STATUS: ALL_FLIGHTS
VALID: ETD 081330 TO 082030
PROBABILITY OF EXTENSION: MODERATE
REMARKS: REPLACES ADVZY 032 IN ANTICIPATION OF MOVING ADDITIONAL
TRAFFIC TO NW GATE LATER
ASSOCIATED RESTRICTIONS:
MODIFICATIONS: TIME EXTENDED
ROUTES:

ORIG DEST ROUTE

KLAS KDFW >GUP J72 ABQ J15 CME BGS
GEEKY< B00VE5
KLAS KDAL >GUP J72 ABQ J15 CME BGS
BGTOE< BACHR4
KPHX KTUS KDFW >EWM J4 INK GEEKY< B00VE5
KPHX KTUS KDAL >EWM J4 INK BGTOE< BACHR4
KSAN KDFW >IPL J2 GBN J50 SS0 J4 INK
GEEKY< B00VE5
KSAN KDAL >IPL J2 GBN J50 SS0 J4 INK
BGTOE< BACHR4
ZAB(-PHX -TUS) KDAL >CME BGS BGTOE< BACHR4
ZAB(-PHX -TUS) KDFW >CME BGS GEEKY< B00VE5
ZDV KDFW >CNX J15 CME BGS GEEKY<
B00VE5
ZDV KDAL >CNX J15 CME BGS BGTOE<
BACHR4
ZLA(-LAS -SAN) KDFW >BLH J169 TFD J50 SS0 J4
INK GEEKY< B00VE5
ZLA(-LAS -SAN) KDAL >BLH J169 TFD J50 SS0 J4
INK BGTOE< BACHR4
SLC KDAL >TCH HVE RSK J15 CME BGS
BGTOE< BACHR4
SLC KDFW >TCH HVE RSK J15 CME BGS
GEEKY< B00VE5
ZLC KDAL >JNC J15 CME BGS BGTOE<
BACHR4
ZLC KDFW >JNC J15 CME BGS GEEKY<
B00VE5
ZOA KDFW >MLF J58 RSK J15 CME BGS
GEEKY< B00VE5
ZOA KDAL >MLF J58 RSK J15 CME BGS
BGTOE< BACHR4
ZSE CZV CZE KDAL >TCH J15 CME BGS BGTOE<
BACHR4
ZSE CZV CZE KDFW >TCH J15 CME BGS GEEKY<
B00VE5

TMI ID: RRDCC032
081542-082030
22/06/08 15:42 DCCOPS.lxstn19

Advisory ID: 018

Reporting ARTCC: None

Advisory Effective Start Time: Tue Jun 07 09:29:00 UTC 2022

Advisory Effective End Time: Mon Jun 20 22:06:00 UTC 2022

Advisory Text: ATCSCC ADVZY 018 DCC 06/07/2022 VOLCANIC ACTIVITY BULLETIN -
POPOCATEPETL

FVXX22 KNES 070929 WSI DDS:070930

VA ADVISORY

DTG: 20220607/0929Z

VAAC: WASHINGTON

VOLCANO: POPOCATEPETL 341090

PSN: N1901 W09837

AREA: MEXICO

SUMMIT ELEV: 17802 FT (5426 M)

ADVISORY NR: 2022/069

INFO SOURCE: GOES-16. WEBCAM. NWP MODELS. VOLCAT.

ERUPTION DETAILS: NEW VA EMS OBS

OBS VA DTG: 07/0916Z

OBS VA CLD: SFC/FL210 N1904 W09837 - N1810 W09918
- N1830 W09939 - N1904 W09837 MOV SW 10KT

FCST VA CLD +6HR: 07/1530Z SFC/FL210 N1904 W09837
- N1730 W09954 - N1803 W10028 - N1904 W09837

FCST VA CLD +12HR: 07/2130Z NO VA EXP

FCST VA CLD +18HR: 08/0330Z NO VA EXP

RMK: NEW VA EMS OBS MOV SW IN STLT IMAGERY. VA
FCST TO CONT SW MOV THRU T+6 HRS BEFORE DISP. VO
ACT LOW TO MODERATE. ...FISHER

NXT ADVISORY: WILL BE ISSUED BY 20220607/1530Z
202206070929-202206071530

Advisory ID: 058

Reporting ARTCC: None

Advisory Effective Start Time: Tue Jun 07 16:15:00 UTC 2022

Advisory Effective End Time: Mon Jun 20 22:06:00 UTC 2022

Advisory Text: ATCSCC ADVZY 058 DCC 06/07/2022 VOLCANIC ACTIVITY BULLETIN -
REVENTADOR

FVXX21 KNES 071615 WSI DDS:071617

VA ADVISORY

DTG: 20220607/1615Z

VAAC: WASHINGTON

VOLCANO: REVENTADOR 352010

PSN: S0004 W07739

AREA: ECUADOR

SUMMIT ELEV: 11686 FT (3562 M)

ADVISORY NR: 2022/454

INFO SOURCE: GOES-16. VONA. WEBCAM. NWP MODELS.

ERUPTION DETAILS: FRQT VA EMS.

OBS VA DTG: 07/1540Z

OBS VA CLD: SFC/FL160 N0002 W07750 - S0004 W07739
- S0005 W07740 - S0001 W07753 - N0002 W07750 MOV
NW 5KT

FCST VA CLD +6HR: 07/2130Z SFC/FL160 N0008 W07746
- S0004 W07739 - S0005 W07740 - N0004 W07751 -
N0008 W07746

FCST VA CLD +12HR: 08/0330Z SFC/FL160 N0002
W07752 - S0004 W07739 - S0005 W07740 - S0006
W07753 - N0002 W07752

FCST VA CLD +18HR: 08/0930Z SFC/FL160 N0005
W07750 - S0004 W07739 - S0005 W07740 - S0001
W07753 - N0005 W07750

RMK: FRQT VA CLDS OBSD BY WEBCAM. VA OBSD MOVG
SLWLY NW UNTIL WX CLD CVR MOVD OVR VA CLDS BTWN
1400Z AND 1430Z. EARLIER VONA RPRTD VA TO FL150
AND PSBLY HIGHER. NWP MDLS FCST LGT WINDS THRU
T+18. ...HOSLEY

NXT ADVISORY: WILL BE ISSUED BY 20220607/2215Z
202206071615-202206072215

Advisory ID: 014

Reporting ARTCC: None

Advisory Effective Start Time: Wed Jun 08 09:14:00 UTC 2022

Advisory Effective End Time: Mon Jun 20 22:06:00 UTC 2022

Advisory Text: ATCSCC ADVZY 014 DCC 06/08/2022 VOLCANIC ACTIVITY BULLETIN -
SEMISOPOCHNOI

FVXX25 KNES 080914 WSI DDS:080916

VA ADVISORY

DTG: 20220608/0914Z

VAAC: WASHINGTON

VOLCANO: SEMISOPOCHNOI

PSN: N5156 E17937

AREA: ALEUTIAN.IS

SUMMIT ELEV: 4006 FT (1221 M)

ADVISORY NR: 2022/013

INFO SOURCE: ANCHORAGE VAAC

ERUPTION DETAILS: NOT PROVIDED

OBS VA DTG: NOT PROVIDED

OBS VA CLD: NOT PROVIDED

FCST VA CLD +6HR: NOT PROVIDED

FCST VA CLD +12HR: NOT PROVIDED

FCST VA CLD +18HR: NOT PROVIDED

RMK: PLEASE SEE FVAK21 PAWU 080734 ISSUED BY THE ANCHORAGE VAAC THAT DESCRIBES CONDITIONS NEAR THE WASHINGTON VAAC AOR. ...FISHER

NXT ADVISORY: WILL BE ISSUED BY 20220608/1515Z
202206080914-202206081515

Advisory ID: 036

Reporting ARTCC: None

Advisory Effective Start Time: Wed Jun 08 13:16:00 UTC 2022

Advisory Effective End Time: Wed Jun 08 23:00:00 UTC 2022

Advisory Text: ATCSCC ADVZY 036 DCC 06/08/22 FCA RQD

NAME: FCA004:NO_AR_ROUTES_TO_RSW_AREAS

CONSTRAINED AREA: ZJX/ZMA

REASON: OTHER

INCLUDE TRAFFIC: UNKN DEPARTURES TO KAPF/KFMY/KMKY/KPGD/KRSW

FACILITIES INCLUDED: ZJX/ZMA/ZNY/ZBW/ZDC/ZOB/ZTL/CYZ/ZID

FLIGHT STATUS: ALL_FLIGHTS

VALID: FCA ENTRY TIME FROM 081925 TO 082300

PROBABILITY OF EXTENSION: MODERATE

REMARKS: SEE DYNAMIC LIST FOR UPDATES. IMPLEMENTED DUE TO MILITARY ACTIVITIES (2000Z-2300Z) AND ROCKET LAUNCH ACTIVITIES (1925Z-2300Z).

ASSOCIATED RESTRICTIONS:

MODIFICATIONS:

ROUTES:

ORIG DEST ROUTE

UNKN KRSW KFMY KAPF UPT RTE:DUE TO SUA

KMKY KPGD ACTIVITY, THE AR ROUTES ARE

NOT AVAILABLE TO THESE

DESTINATIONS. STAKEHOLDERS

PLEASE FILE INLAND ROUTES.

TMI ID: RRDCC036

081316-082300

22/06/08 13:16 DCCOPS.lxstn21

Advisory ID: 070

Reporting ARTCC: None

Advisory Effective Start Time: Wed Jun 08 18:00:00 UTC 2022

Advisory Effective End Time: Wed Jun 08 20:30:00 UTC 2022

Advisory Text: ATCSCC ADVZY 070 DCC 06/08/2022 ATLANTIC ROUTE CLOSURE_RQD

EVENT TIME: 08/1750 - 08/2000

CONSTRAINED FACILITIES: ZDC
ZDC ADVISES THAT THE ATLANTIC ROUTES (ARS) SOUTH OF ILM/DIW ARE
CLOSED DUE TO THUNDERSTORMS. USERS SHOULD FILE ALTERNATE ROUTING.

EXPECT UPDATE BY 2000Z
081800-082030
22/06/08 18:00 DCCOPS.lxstn32

Advisory ID: 050

Affected Location: DCC

Reporting ARTCC: ZDC

Advisory Effective Start Time: Wed Jun 08 15:04:00 UTC 2022

Advisory Effective End Time: Thu Jun 09 02:30:00 UTC 2022

Advisory Text: ATCSCC ADVZY 050 DCC/ZDC 06/08/2022 DC METRO SWAP IMPLEMENTATION PLAN_FYI

EVENT TIME: 08/1800 - 09/0200

THIS ADVISORY IS FOR PLANNING PURPOSES ONLY. CUSTOMERS ARE
ENCOURAGED TO FILE NORMAL ROUTINGS AND ANTICIPATE THE SPECIFIED
ALTERNATE ROUTES.

SWAP STATEMENT:

SEVERE WEATHER AVOIDANCE PLANS ARE EXPECTED FOR THE ZDC AIRSPACE.

LOCATION AND START TIME:

THUNDERSTORMS WILL IMPACT SOUTHWEST ZDC AND NC COAST BY 18-19Z...
MOVING INTO DC AREA BY 22-00Z.

FORECAST TOPS AND MOVEMENT:

SCT THUNDERSTORMS MOVING NE 20 KTS...TOPS TO FL400.

PLANNED ALTERNATE DEPARTURE ROUTES:

CDRS FOR BUFFR, JERES, OTTTO, RAMAY, CLTCH, JDUBB AND SCOOB MAY BE
UTILIZED AS ROUTES ARE IMPACTED. SWANN AND AGARD ROUTES MAY ALSO BE
AFFECTED LATE IN THE DAY AS THE WEATHER MOVES EAST ACROSS ZDC AND
THE DC METRO AREA. NY&PHL METRO DEPARTURES FILED VIA J6, J48, Q75
AND AR ROUTES SB MAY BE SWAPPED AFTER 1900Z.

PLANNED ALTERNATE ARRIVAL ROUTES:

FLIGHTS INTO THE DC&NY METRO AREA MAY BE SWAPPED BETWEEN ZOB,ZJX,ZTL
AND ZID AS ROUTES ARE IMPACTED AFTER 2100Z. POSSIBLE HOLDING AND
GROUND STOPS FOR NY&DC METRO ARRIVALS AFTER 2300Z.

FUEL ADVISORY:

AIRCRAFT CAPPING AT OR BELOW 100 IS POSSIBLE FOR DESTINATIONS OUT TO
100 MILES FROM THE OTTTO, RAMAY, JDUBB AND CLTCH DEPARTURE POINTS
AND MAY INCLUDE CAPPING PLAYBOOKS IN THIS AREA.

POSSIBLE PLAYBOOK:

LIMBO S,W, SW

DQO W

SERMN S

WEVEL
PCT EURO TUNNEL
FLA TO NE
NE TO FL

HOTLINE ACTIVATION: POSSIBLE AFTER 1900Z.
(540) 359-3200 PIN: 2779
081504-090230
22/06/08 15:04 DCCOPS.lxstn22

Advisory ID: 022

Reporting ARTCC: None
Advisory Effective Start Time: Wed Jun 08 11:15:00 UTC 2022
Advisory Effective End Time: Thu Jun 09 01:15:00 UTC 2022
Advisory Text: ATCSCC ADVZY 022 DCC 06/08/2022 NOCC SCHEDULED FACILITY OUTAGES
EVENT TIME: 08/1115 - 09/0115
NOCC 06/08/22 SCHEDULED FACILITY OUTAGES.

TETERBORO, NJ (TEB) RWY 06 (TEB) LOC/GS 1130-1530Z.
MEMPHIS, TN (MEM) RWY 18C/36C (SDU/TSE) LOC/GS 1130-2000Z.
LOUISVILLE, KY (SDF) RWY 29 (LKS) LOC 1200-1900Z.
COVINGTON, KY (CVG) RWY 18R/36L (CJN/VAC) LOC/GS/ALS 1200-2100Z.
TAMPA, FL (TPA) RWY 01L (AMP) LOC/GS 1200-2000Z.
INDIANAPOLIS, IN (IND) RWY 14 (BJP) LOC 1200-2300Z.
INDIANAPOLIS, IN (IND) RWY 32 (COA) GS 1200-2300Z.
COVINGTON, KY (CVG) RWY 18R (CJN) ALS 1230-1330Z.
DETROIT, MI (DTW) RWY 21L (EJR) LOC/GS 1300-1600Z.
FT LAUDERDALE, FL (FLL) RWY 28R (UDL) LOC/GS 1300-1700Z.
COVINGTON, KY (CVG) RWY 18C (SIC) LOC 1300-2100Z.
COVINGTON, KY (CVG) RWY 36C (CVG) GS/ALS 1300-2100Z.
BALTIMORE, MD (BWI) RWY 33L (RUX) GS 1400-1600Z.
DALLAS-FT WORTH, TX (DFW) RWY 17C/35C (FLQ/PKQ) LOC/GS 1400-1800Z.
ANCHORAGE, AK (ANC) RWY 15 (BSC) LOC/GS 1430-0609/0130Z.
ONTARIO, CA (ONT) RWY 26L (TWO) ALS 1500-2100Z.
BALTIMORE, MD (BWI) RWY 33L (RUX) LOC 1700-1900Z.
PORTLAND, OR (PDX) RWY 10L/28R (VDG/IAP) LOC/GS 1700-2359Z.

DETROIT, MI (DTW) RWY 03R (HUU) LOC/GS/ALS 0609/0100-0600

IF THERE ARE ANY QUESTIONS PLEASE CONTACT THE NOCC AT (540) 359-3110

081115-090115

081059-090115

22/06/08 10:59 DCCOPS2.lxstn42

Advisory ID: 063

Reporting ARTCC: None

Advisory Effective Start Time: Wed Jun 08 16:17:00 UTC 2022

Advisory Effective End Time: Wed Jun 08 21:00:00 UTC 2022

Advisory Text: ATCSCC ADVZY 063 DCC 06/08/22 REROUTE CANCELLATION

OHIO_VALLEY_TO_FLORIDA_1_PARTIAL HAS BEEN CANCELLED.

REMARKS: CANCELS ADVZY 053

ASSOCIATED RESTRICTIONS:

081617-082100

22/06/08 16:17 DCCOPS.lxstn11

Advisory ID: 010

Reporting ARTCC: None

Advisory Effective Start Time: Wed Jun 08 05:17:00 UTC 2022

Advisory Effective End Time: Mon Jun 20 22:06:00 UTC 2022

Advisory Text: ATCSCC ADVZY 010 DCC 06/08/2022 VOLCANIC ACTIVITY BULLETIN - SANGAY

FVXX20 KNES 080517 WSI DDS:080518

VA ADVISORY

DTG: 20220608/0517Z

VAAC: WASHINGTON

VOLCANO: SANGAY 352090

PSN: S0201 W07820

AREA: ECUADOR

SUMMIT ELEV: 17159 FT (5230 M)

ADVISORY NR: 2022/581

INFO SOURCE: GOES-16. NWP MODELS. VOLCAT.

ERUPTION DETAILS: CONT VA EMS PSBL

OBS VA DTG: 08/0440Z

OBS VA CLD: SFC/FL210 S0154 W07843 - S0159 W07820

- S0207 W07844 - S0154 W07843 MOV W 5KT

FCST VA CLD +6HR: 08/1030Z SFC/FL210 S0154 W07843
- S0159 W07819 - S0207 W07844 - S0154 W07843

FCST VA CLD +12HR: 08/1630Z NO VA EXP

FCST VA CLD +18HR: 08/2230Z NO VA EXP

RMK: CONT VA EMS PSBL MOV W IN STLT IMAGERY. VA
NOT OBS DUE TO WX CLDS. PSBL VA FCST TO CONT W
MOV THRU T+6HRS BEFORE DISP. VO ACT MODERATE.
...FISHER

NXT ADVISORY: WILL BE ISSUED BY 20220608/1115Z
202206080517-202206081115

Advisory ID: 052

Reporting ARTCC: None

Advisory Effective Start Time: Wed Jun 08 15:10:00 UTC 2022

Advisory Effective End Time: Thu Jun 09 02:00:00 UTC 2022

Advisory Text: ATCSCC ADVZY 052 DCC 06/08/22 ROUTE RQD /FL

NAME: ZMA_TO_ATL

CONSTRAINED AREA: ZJX

REASON: OTHER

INCLUDE TRAFFIC: ZMA DEPARTURES TO KATL

FACILITIES INCLUDED: ZJX/ZMA/ZTL

FLIGHT STATUS: ALL_FLIGHTS

VALID: ETD 081000 TO 090200

PROBABILITY OF EXTENSION: LOW

REMARKS: REPLACES ADVZY 016. DUE TO ZJX STAFFING

ASSOCIATED RESTRICTIONS:

MODIFICATIONS: TIME EXTENDED

ROUTES:

ORIG DEST ROUTE

ZMA KATL >SMELZ Q110 DAWWN BEORN<

HOBTT2

TMI ID: RRDCC016

081510-090200

22/06/08 15:10 DCCOPS.lxstn19

Advisory ID: 043

Reporting ARTCC: None

Advisory Effective Start Time: Wed Jun 08 13:58:00 UTC 2022

Advisory Effective End Time: Mon Jun 20 22:06:00 UTC 2022

Advisory Text: ATCSCC ADVZY 043 DCC 06/08/2022 VOLCANIC ACTIVITY BULLETIN -
SEMISOPOCHNOI

FVXX25 KNES 081358 WSI DDS:081401

VA ADVISORY

DTG: 20220608/1358Z

VAAC: WASHINGTON

VOLCANO: SEMISOPOCHNOI
PSN: N5157 E17937

AREA: ALEUTIAN.IS

SUMMIT ELEV: 4006 FT (1221 M)

ADVISORY NR: 2022/014

INFO SOURCE: ANCHORAGE VAAC.

ERUPTION DETAILS: NOT PROVIDED

OBS VA DTG: NOT PROVIDED

OBS VA CLD: NOT PROVIDED

FCST VA CLD +6HR: NOT PROVIDED

FCST VA CLD +12HR: NOT PROVIDED

FCST VA CLD +18HR: NOT PROVIDED

RMK: PLEASE SEE FVAK21 PAWU 081330 ISSUED BY THE ANCHORAGE VAAC THAT DESCRIBES CONDITIONS NEAR THE WASHINGTON VAAC AREA OF RESPONSIBILITY. ...HOSLEY

NXT ADVISORY: WILL BE ISSUED BY 20220608/2000Z

202206081358-202206082000

Advisory ID: 064

Reporting ARTCC: None

Advisory Effective Start Time: Wed Jun 08 16:54:00 UTC 2022

Advisory Effective End Time: Wed Jun 08 21:00:00 UTC 2022

Advisory Text: ATSCC ADVZY 064 DCC 06/08/22 ROUTE RQD /FL

NAME: DFW_BEREE_NORTH_FLOW_PARTIAL

CONSTRAINED AREA: ZKC/ZFW

REASON: WEATHER

INCLUDE TRAFFIC: ZAU/ZID/ZKC/ZMP DEPARTURES TO KDAL/KDFW

FACILITIES INCLUDED: ZAU/ZFW/ZID/ZKC/ZMP

FLIGHT STATUS: ALL_FLIGHTS

VALID: ETD 081700 TO 082100

PROBABILITY OF EXTENSION: MODERATE

REMARKS:

ASSOCIATED RESTRICTIONS:

MODIFICATIONS: MODIFIED ZAU AND ZID RTES FOR WX.

ROUTES:

ORIG DEST ROUTE

ZAU KDFW >STL MCI ICT HOFFF< JOVEM4

ZAU KDAL >STL MCI PER HYDES< HERBZ1

ZID KDFW >STL MCI ICT HOFFF< JOVEM4

ZID KDAL >STL MCI ICT HYDES< HERBZ1
ZKC KDAL >PER HYDES< HERBZ1
ZKC KDFW >ICT HOFFF< JOVEM4
ZMP KDFW >OVR J21 ICT HOFFF< JOVEM4
ZMP KDAL >OVR PER HYDES< HERBZ1

TMI ID: RRDCC064
081654-082100
22/06/08 16:54 DCCOPS.lxstn21

Advisory ID: 021

Reporting ARTCC: None
Advisory Effective Start Time: Wed Jun 08 10:44:00 UTC 2022
Advisory Effective End Time: Wed Jun 08 21:00:00 UTC 2022
Advisory Text: ATSCC ADVZY 021 DCC 06/08/22 FCA RQD
NAME: FCA002:NO_Q34_2_PARTIAL
CONSTRAINED AREA: ZDC
REASON: WEATHER
INCLUDE TRAFFIC: KBNA/ZFW/ZHU/ZME DEPARTURES TO KEWR/KLGA
FACILITIES INCLUDED: ZFW/ZHU/ZID/ZME/ZNY/ZOB
FLIGHT STATUS: ALL_FLIGHTS
VALID: FCA ENTRY TIME FROM 081200 TO 082100
PROBABILITY OF EXTENSION: LOW
REMARKS: SEE DYNAMIC LIST FOR UPDATES.
ASSOCIATED RESTRICTIONS:
MODIFICATIONS:
ROUTES:

FROM:

ORIG ROUTE - ORIGIN SEGMENTS

KBNA >IIU J39 CREEP
ZFW >LOOSE MEMFS Q29 CREEP
ZHU(-MSY) >SUTTN J29 CARIN MEMFS Q29
CREEP
ZME(-BNA) >MEMFS Q29 CREEP

TO:

DEST ROUTE - DESTINATION SEGMENTS

KEWR CREEP Q29 DORET J584 SLT< FQM3
KLGA CREEP Q29 WWSHR TEESY J146 ETG<
MIP4

TMI ID: RRDCC021
081044-082100
22/06/08 10:44 DCCOPS.lxstn21

Advisory ID: 037

Affected Location: DCC
Reporting ARTCC: ZBW
Advisory Effective Start Time: Wed Jun 08 13:30:00 UTC 2022

Advisory Effective End Time: Thu Jun 09 05:30:00 UTC 2022
Advisory Text: ATCSCC ADVZY 037 DCC/ZBW 06/08/2022 NATOTS_RQD
EVENT TIME: 08/2130 - 09/0500
NATOTS 06/09/2022
NORTH ATLANTIC ADVISORY FOR 06/08/2022 2130Z - 06/09/2022 0500Z

TODAY'S TRACKS:

TRACK T/ TUSKY.N261A.JOOPY
TRACK U/ BRADD.N197A.NICSO
TRACK V/ KANNI.N139A.PORTI
TRACK W/ WHALE.N75A.SUPRY
TRACK X/ VITOL..NANSO.N45D.RAFIN
TRACK Y/ DOVEY

NOTE: CERTAIN TRACKS HAVE MORE THAN ONE OPTION. USERS MAY FILE
EITHER
OR BE TACTICALLY REROUTED. OPERATORS MUST COMPLY WITH ROUTING BELOW
REGARDLESS OF FILING A TRACK OR NOT.

JFK NORTH ATLANTIC DEPARTURES MUST FILE THE FOLLOWING ROUTES:

JFK..MERIT..HFD..PUT
JFK..BETTE..ACK
JFK..HAPIE..YAH00
JFK..SHIPP.Y487.ISLES..JENYY

EWR DEPARTURES MUST FILE:

EWR..MERIT..HFD..PUT
EWR..ELVAE..COL..DIXIE.Y481.POPPN..ISLES JENYY

PHL DEPARTURES MUST FILE:

PHL..DITCH.Q437.HNNAH.Q450.JFK..FOXWD
PHL..DITCH.V312.JIMEE..WAVEY..SHLEP..ACK
PHL..DITCH.V312.JIMEE..WAVEY..SHLEP..YAH00
PHL..OOD..TEBEE..HAYDO..SIE.B24.LYNUS..LARGE..JENYY

DC METRO DEPARTURES MUST FILE:

SWANN..BROSS.Q419.RBV.Q22.FOXWD
SWANN..BROSS.Q419.RBV.Q430.ACK
AGARD..DONIL..AJGON..GEDIC..RIFLE..ACK
SWANN..BROSS.Q419.RBV..YAH00
AGARD..DONIL..AJGON..GEDIC..RIFLE..YAH00
AGARD..SIE.B24.LYNUS..LARGE..JENYY

ZBW OVERFLIGHTS MUST FILE:

RBV.Q22.FOXWD

RBV.Q430.ACK
J174.RIFLE.ACK
RBV.Q430.ACK
J174.RIFLE.ACK
RBV.Q430.RIFLE.YAHOO
J174.RIFLE.YAHOO
ORF.AR9.SIBUT.LARGE.JENYY

***PLEASE NOTE: USERS FILED THROUGH GANDER (CZQ) AIRSPACE, BOBTU
INTERSECTION IS NOT AVAILABLE***

***AIRCRAFT FLYING M201-M204 SHOULD EXPECT NO HIGHER THAN FL310
(UNLESS JOINING A TRACK) IN ZNY AIRSPACE DUE TO HIGH VOLUME***

OPERATORS FLYING WITHIN THE NORTH ATLANTIC ORGANIZED TRACK SYSTEM
ARE NOT REQUIRED TO FILE A NAR AND MAY FILE USER PREFERRED
TRAJECTORY (UPT) UP TO THE OCEANIC ENTRY POINT BASED ON THE
FOLLOWING CRITERIA:

OPERATORS MUST STILL COMPLY WITH ANY DEPARTURE ROUTES, PROCEDURES,
AND/OR RESTRICTIONS FROM THE DEPARTURE AIRPORT. UPT UP TO THE
OEP IS PERMITTED UPON ENTERING ZBW AIRSPACE OR UPON ENTERING THE
MONCTON FIR, EXCEPT AIRCRAFT FILED VIA RBV OR J174. AIRCRAFT
FILED VIA RBV OR J174 MUST FIRST PASS A PUT-ACK-YAHOO LINE BEFORE
PROCEEDING ON UPT. UPT FLIGHT PATHS OF ALL AIRCRAFT PARTICIPATING
IN THE TRIAL MUST REMAIN AT OR NORTH OF A VITOL-LOMPI LINE TO AVOID
ZNY OCEANIC AIRSPACE.

**THIS TRIAL MAY BE DISCONTINUED AT ANY TIME, BASED ON OPERATIONAL
IMPACT, AND IS SUBJECT TO CHANGE. DISPATCHERS SHALL INCLUDE "NO
NARS EAST TRIAL" IN THE REMARKS SECTION OF THE FLIGHT PLANS FOR
PARTICIPATING AIRCRAFT. FLIGHT CREWS ARE EXPECTED TO CARRY
APPLICABLE NAR DOCUMENTATION ON THE FLIGHT DECK FOR ALL FLIGHTS,
REGARDLESS IF PARTICIPATING IN THE TRIAL OR NOT. ANY QUESTIONS
PLEASE CALL ZBW TMU AT 603-879-6666

081330-090530
22/06/08 13:30 DCC0PS.lxstn22

UAS Operating Area (UOA)

This section of the briefing contains UAS operations issued via NOTAM.

All published NOTAMs are available in the [Notices to Airmen Publication \(NTAP\)](#).

Altitude filtering is applied to UOAs in this section of the briefing. All UOAs within 10nm of the departure, destination or alternates are shown; an en-route UOA is only shown where the flight plan altitude is within 2,000ft of the UOA's altitude range.

None

NHC Bulletins

None