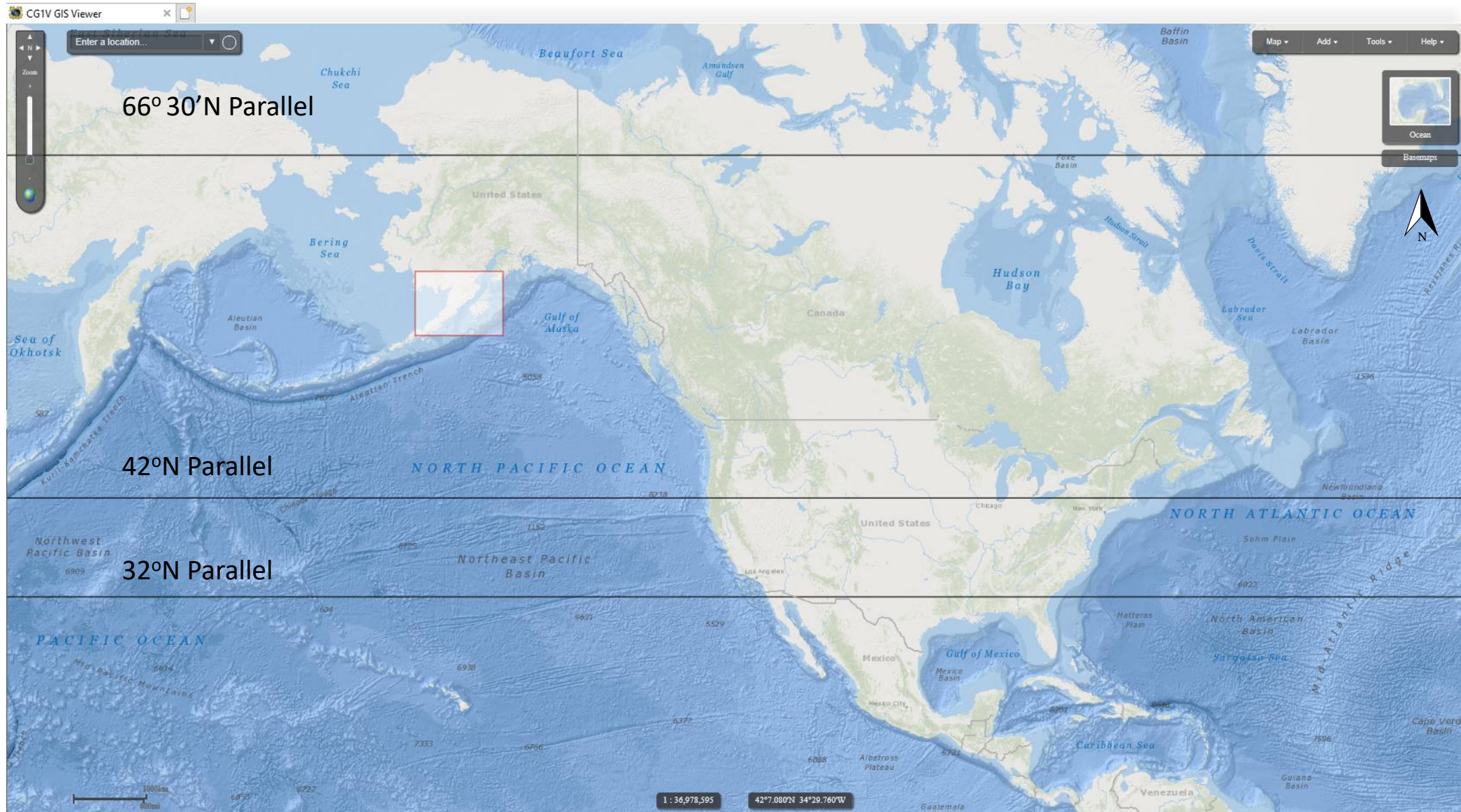


No part of a report of a marine casualty investigation shall be admissible as evidence in any civil or administrative proceeding, other than an administrative proceeding initiated by the United States. 46 U.S.C. §6308.

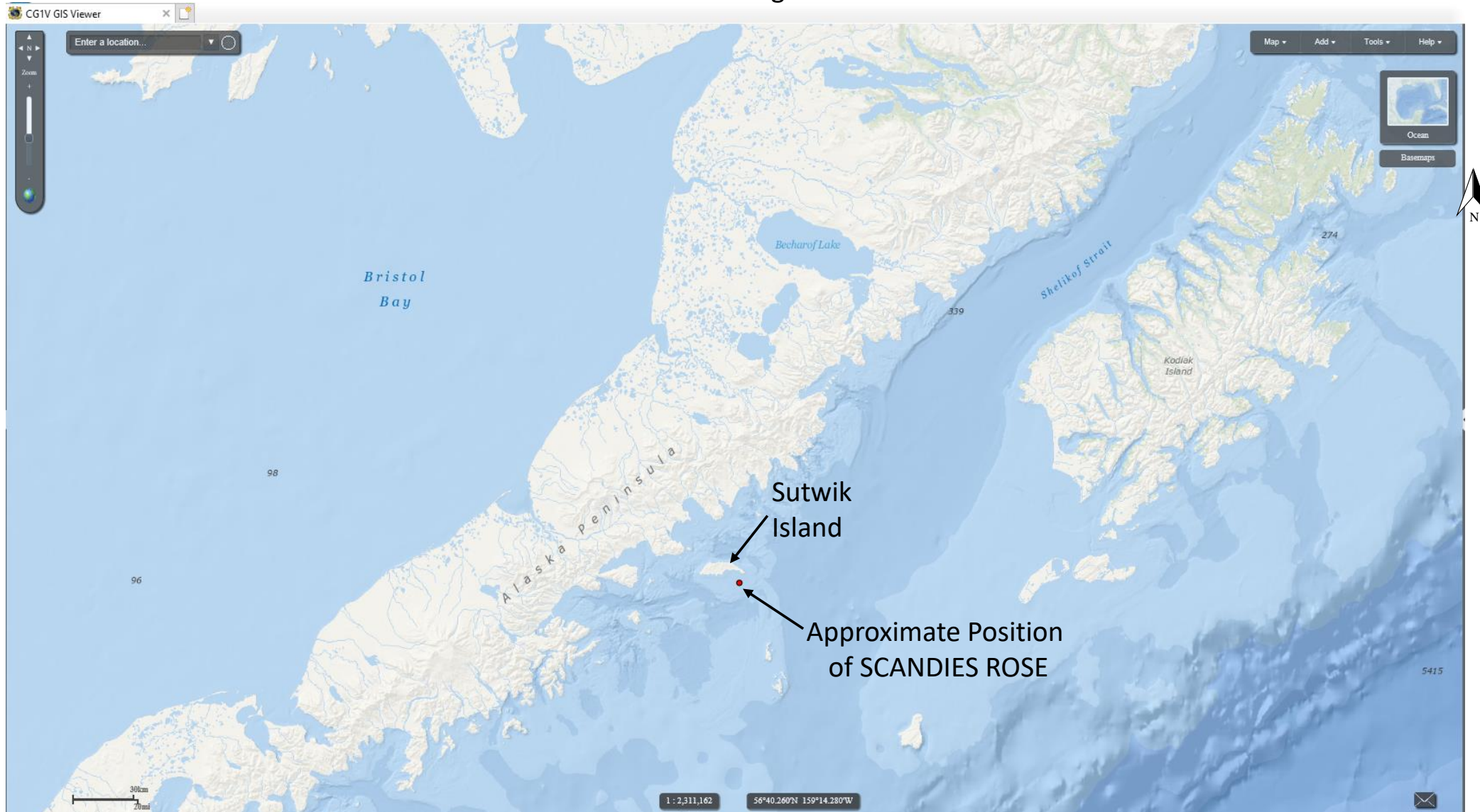
## Map of United States Relative to Alaskan Peninsula and Kodiak Island



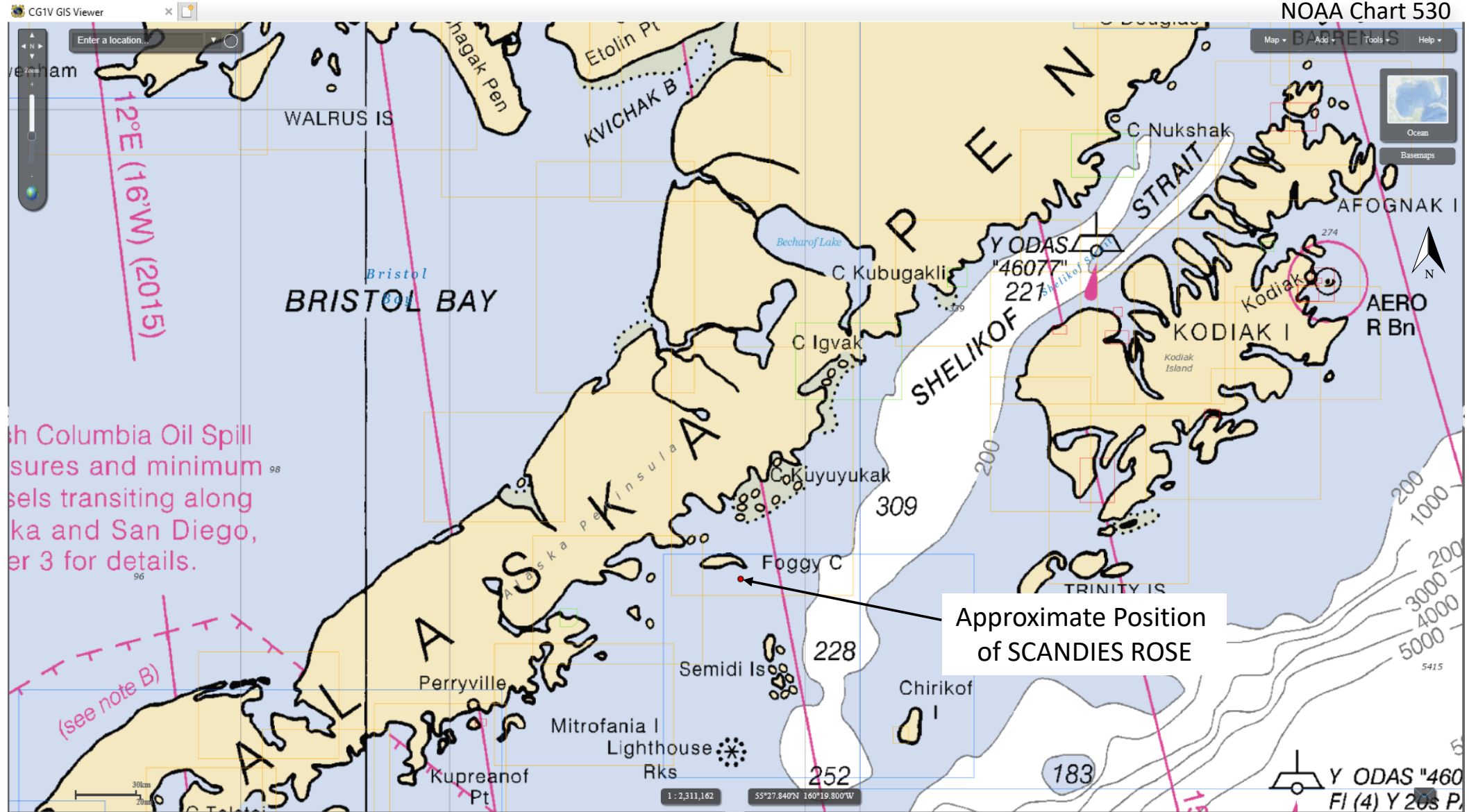
Vessel AIS Plots

No part of a report of a marine casualty investigation shall be admissible as evidence in any civil or administrative proceeding, other than an administrative proceeding initiated by the United States. 46 U.S.C. §6308.

## Sutwik Island and Wreckage of SCANDIES ROSE



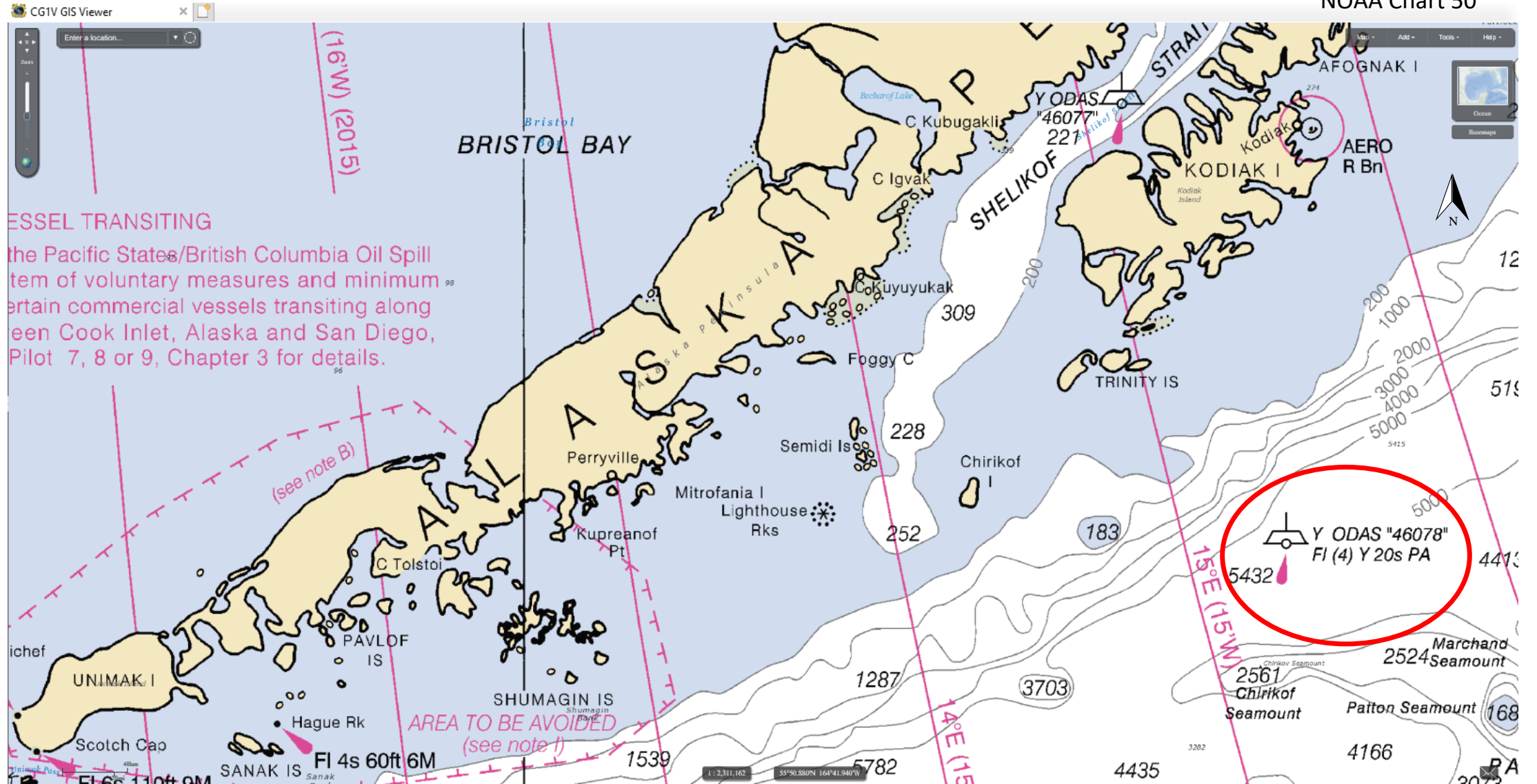
### Position Found of SCANDIES ROSE



No part of a report of a marine casualty investigation shall be admissible as evidence in any civil or administrative proceeding, other than an administrative proceeding initiated by the United States. 46 U.S.C. §6308.

### Buoy 46078

NOAA Chart 50



ESSEL TRANSITING

the Pacific States/British Columbia Oil Spill  
stem of voluntary measures and minimum  
ertain commercial vessels transiting along  
een Cook Inlet, Alaska and San Diego,  
Pilot 7, 8 or 9, Chapter 3 for details.

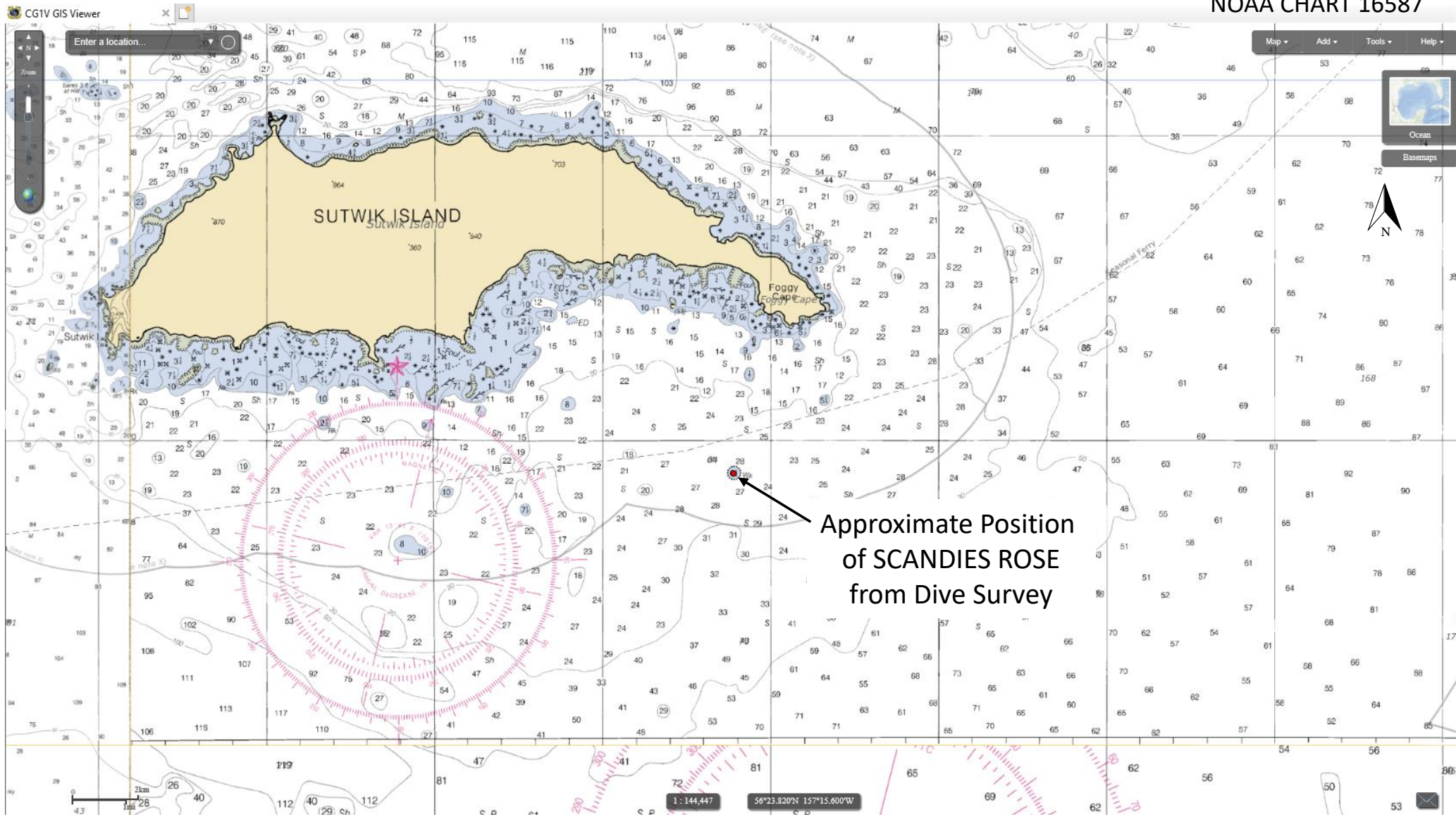
AREA TO BE AVOIDED  
(see note f)

Vessel AIS Plots

No part of a report of a marine casualty investigation shall be admissible as evidence in any civil or administrative proceeding, other than an administrative proceeding initiated by the United States. 46 U.S.C. §6308.

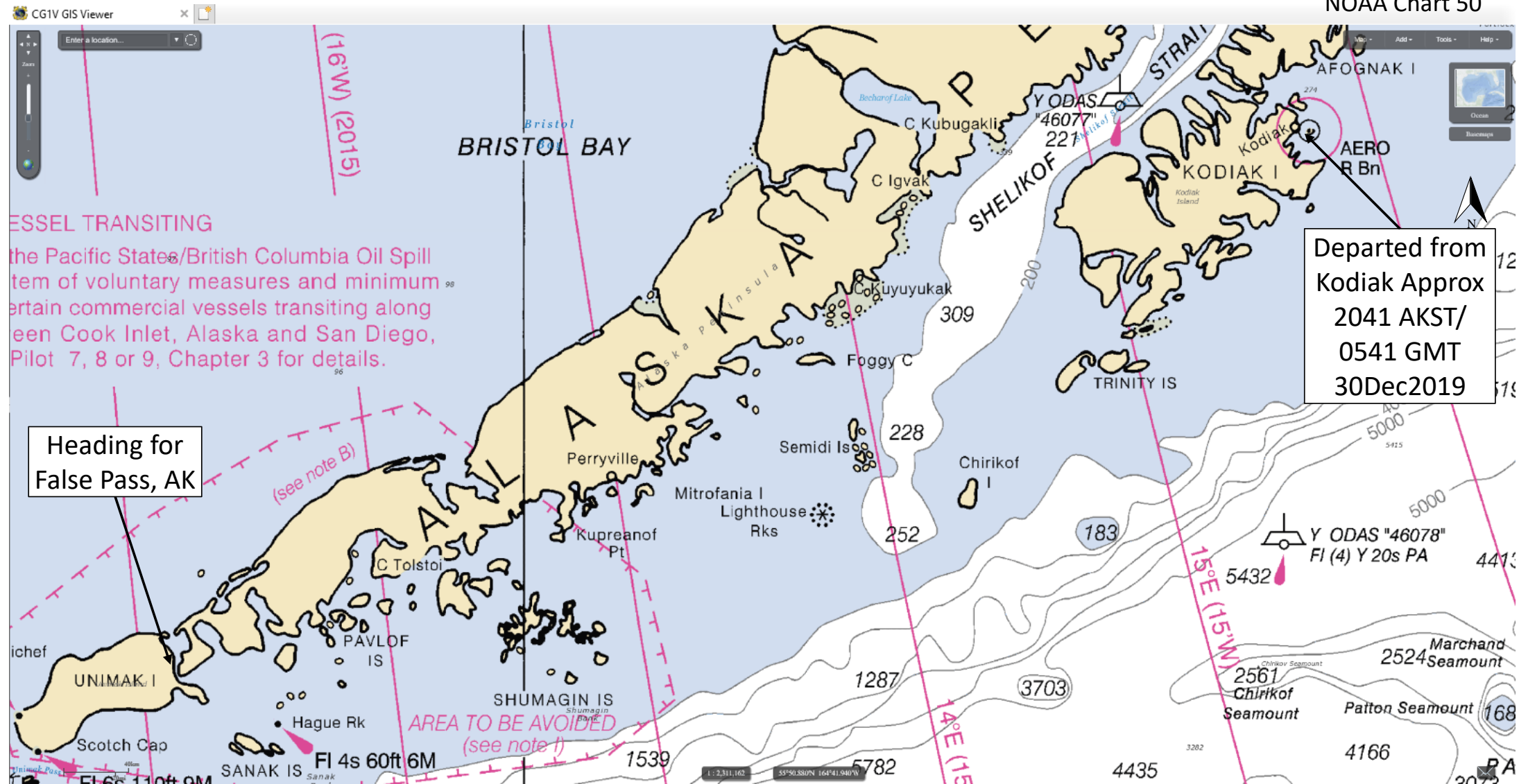
### SCANDIES ROSE Wreckage Location

NOAA CHART 16587



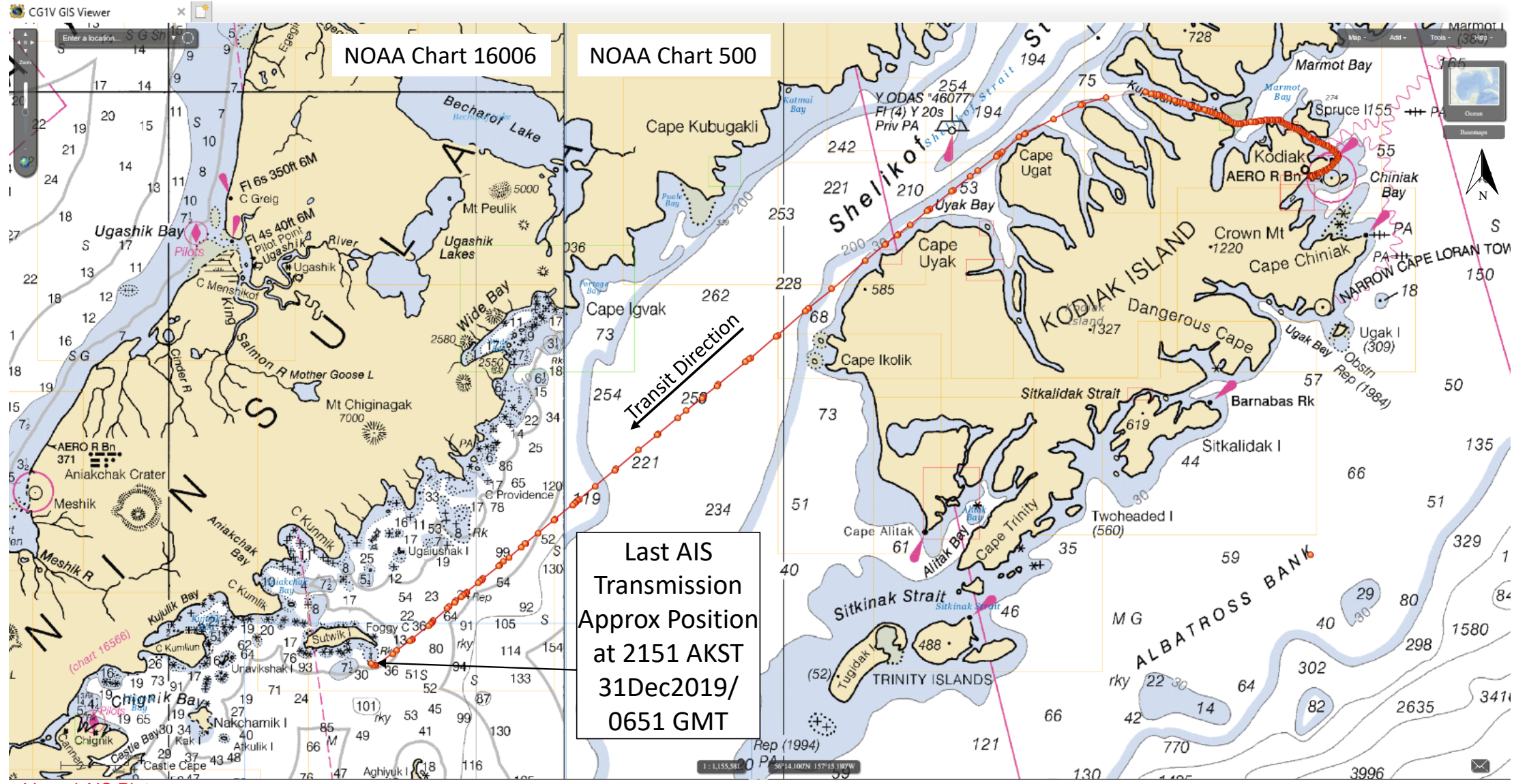
Approximate Position  
of SCANDIES ROSE  
from Dive Survey

### SCANDIES ROSE Departure and Intentions



No part of a report of a marine casualty investigation shall be admissible as evidence in any civil or administrative proceeding, other than an administrative proceeding initiated by the United States. 46 U.S.C. §6308.

### SCANDIES ROSE AIS Data and Interpolated Track

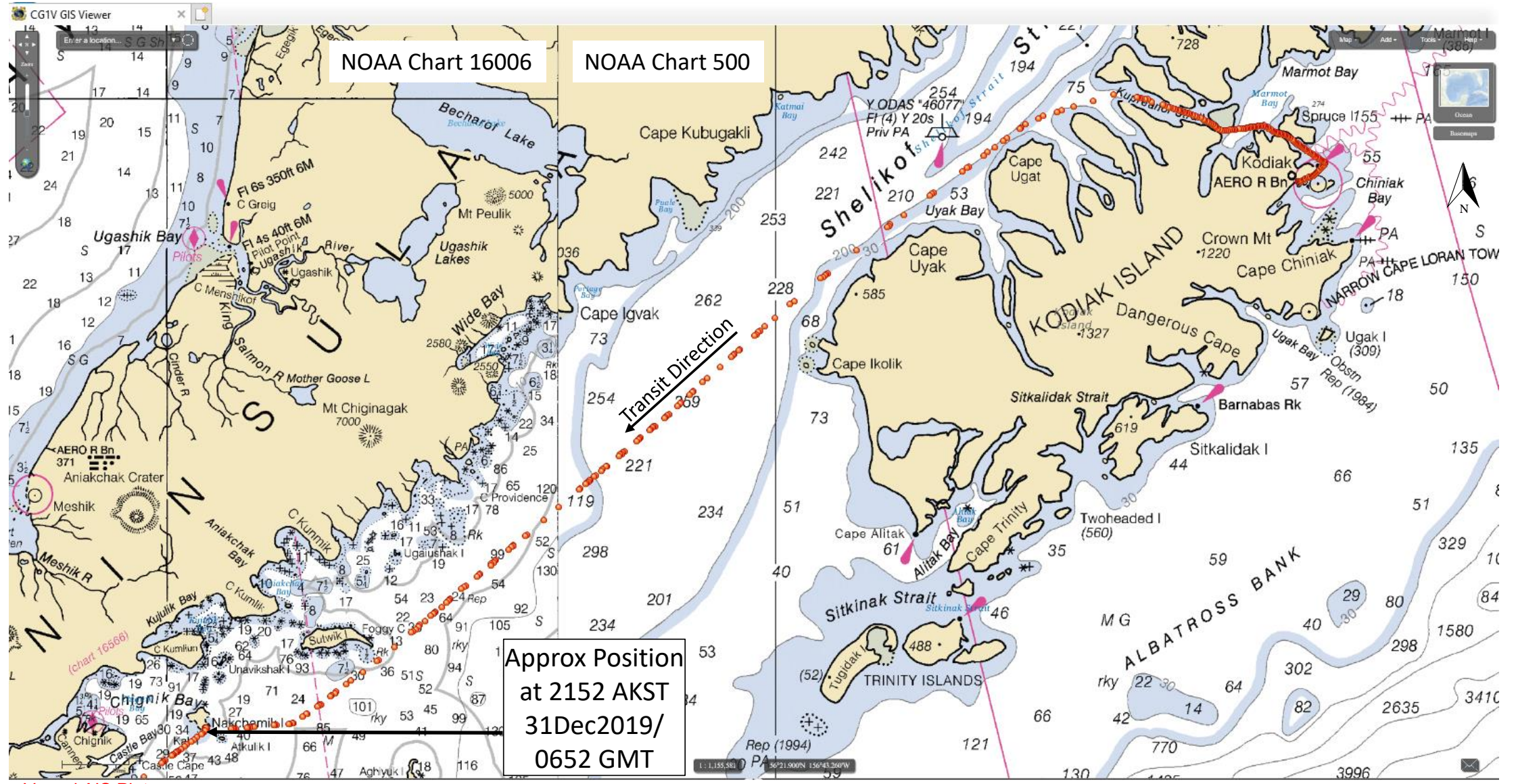


Vessel AIS Plots

MBI Exhibit CG 023

Page 7 of 17

RUFF & REDDY AIS Data 30Dec2019 to 01Jan2020 (GMT)



Vessel AIS Plots

MBI Exhibit CG 023

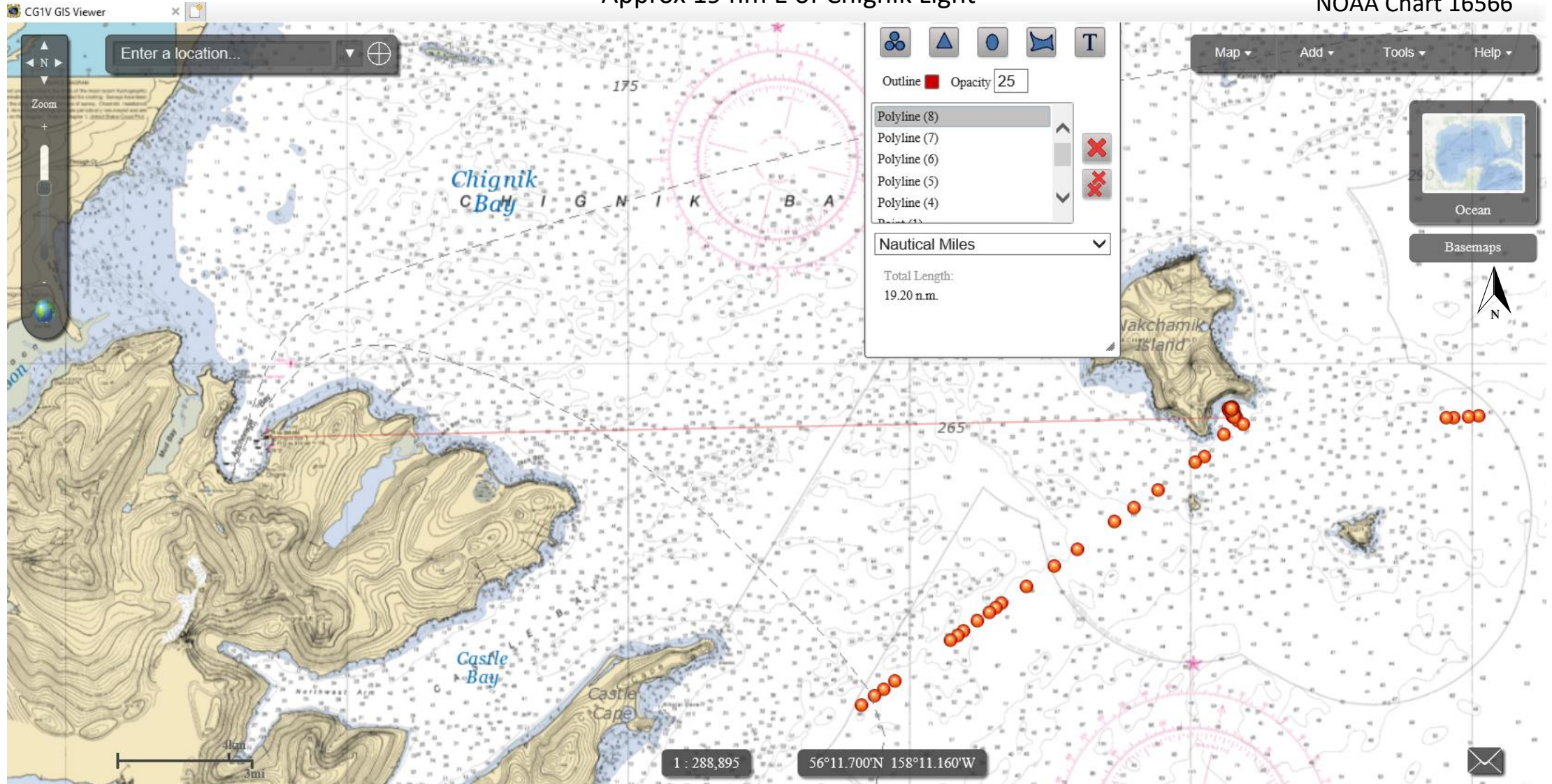
Page 8 of 17



No part of a report of a marine casualty investigation shall be admissible as evidence in any civil or administrative proceeding, other than an administrative proceeding initiated by the United States. 46 U.S.C. §6308.

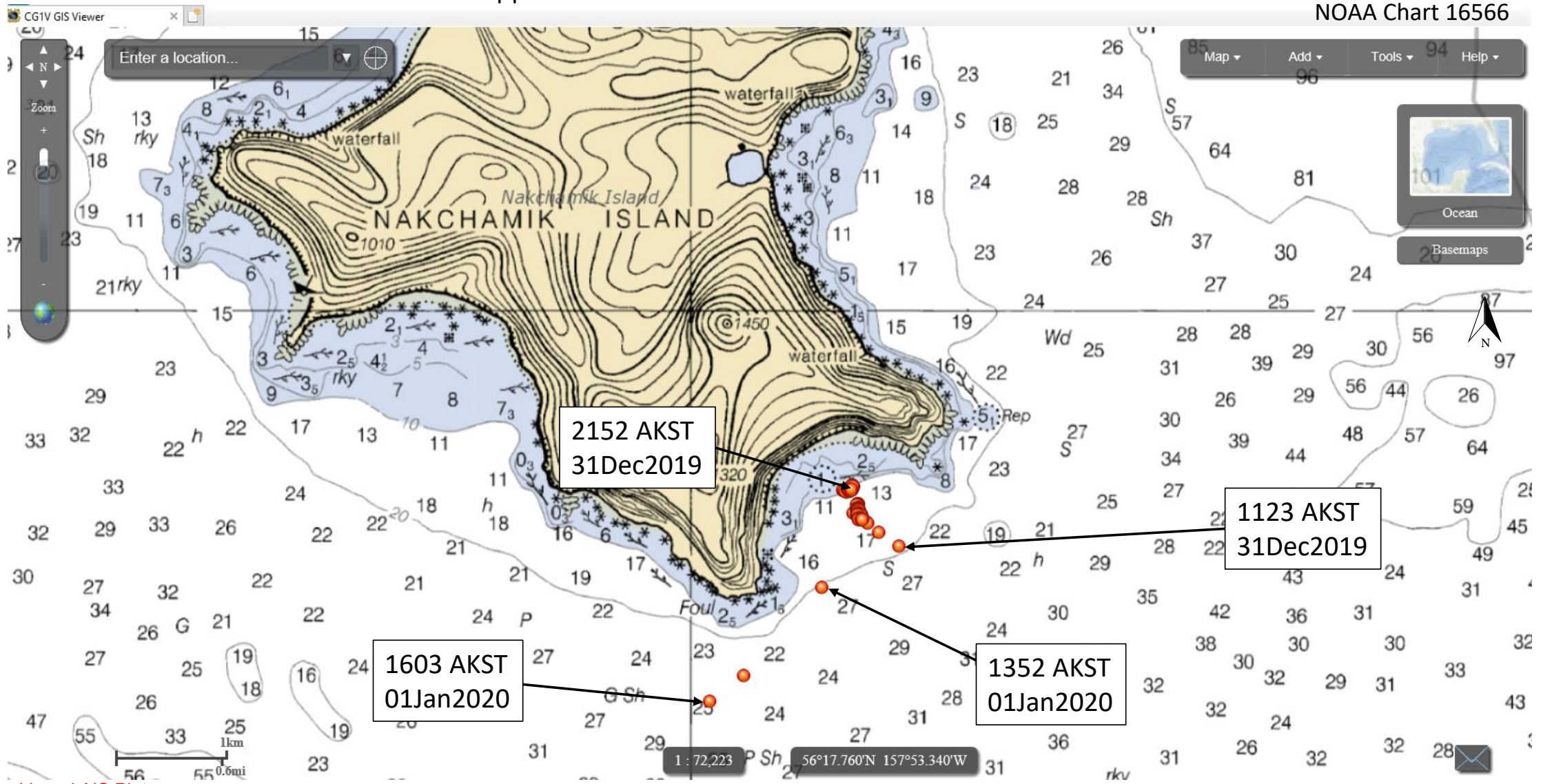
### RUFF & REDDY AIS Data Approx 19 nm E of Chignik Light

NOAA Chart 16566



Vessel AIS Plots

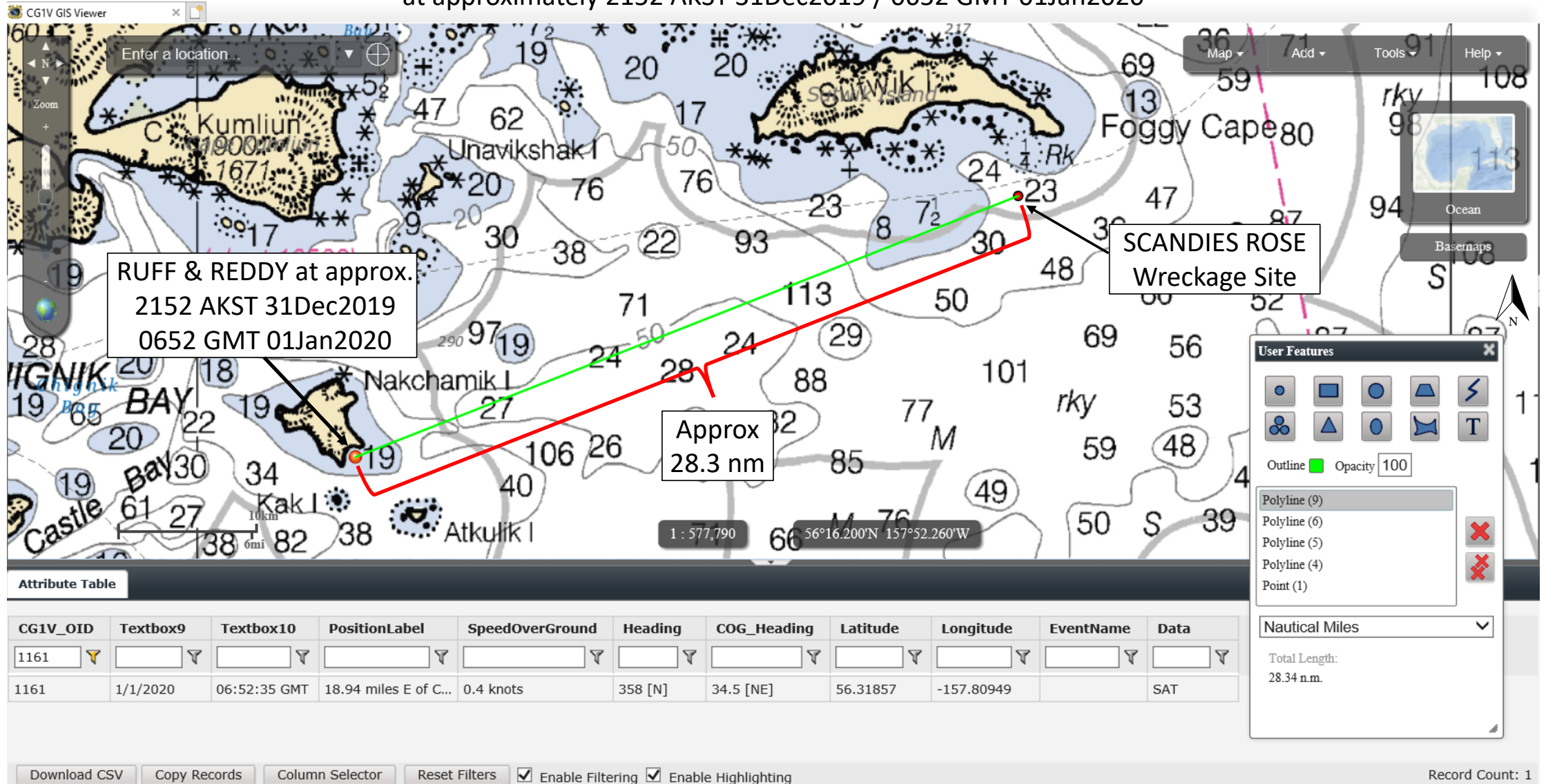
### RUFF & REDDY AIS Data From approx. 1123 AKST 31Dec2019 to 1603 AKST 01Jan2020



Vessel AIS Plots

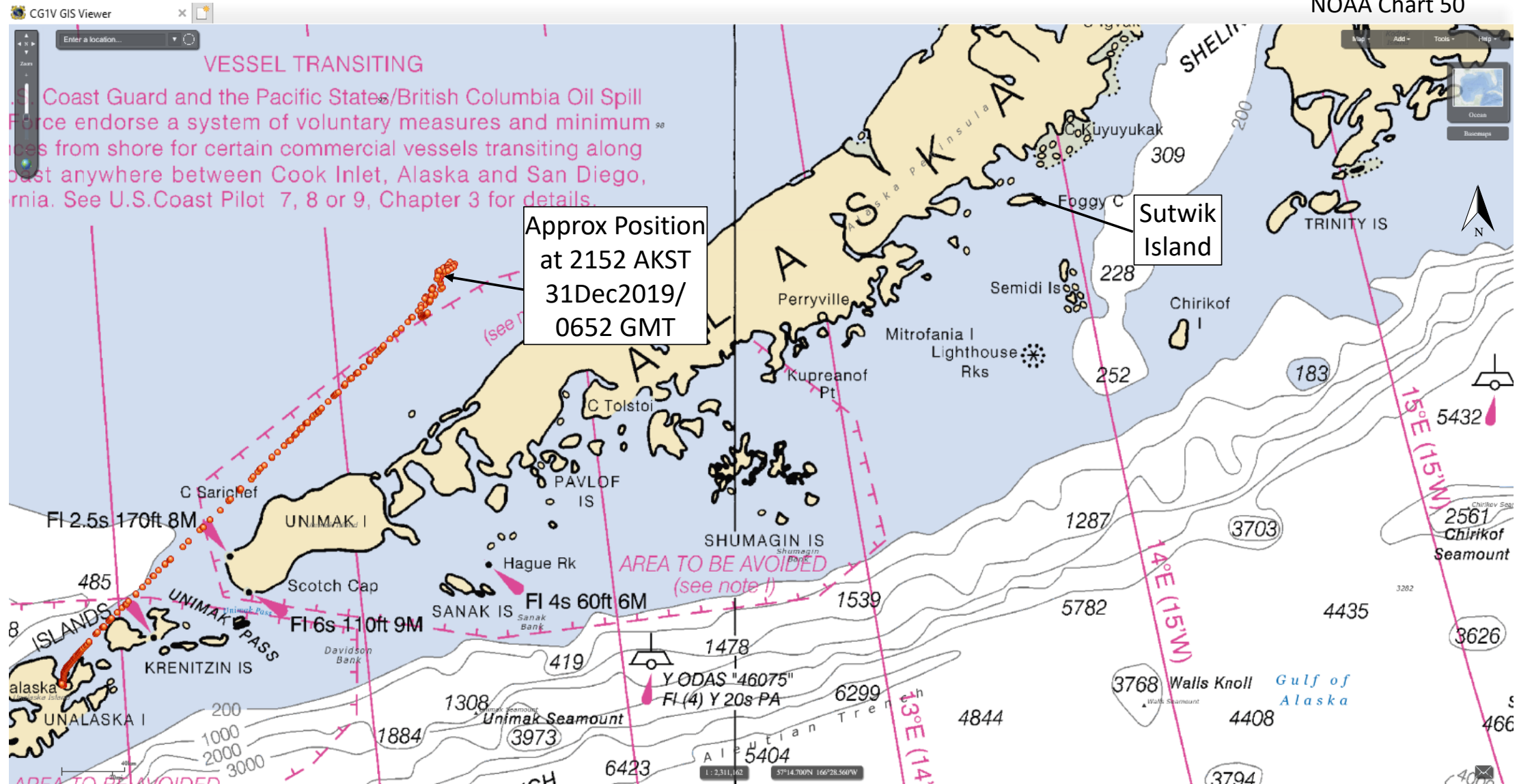
No part of a report of a marine casualty investigation shall be admissible as evidence in any civil or administrative proceeding, other than an administrative proceeding initiated by the United States. 46 U.S.C. §6308.

RUFF & REDDY Relative Position to SCANDIES ROSE Wreckage Site  
at approximately 2152 AKST 31Dec2019 / 0652 GMT 01Jan2020



No part of a report of a marine casualty investigation shall be admissible as evidence in any civil or administrative proceeding, other than an administrative proceeding initiated by the United States. 46 U.S.C. §6308.

### PACIFIC SOUNDER AIS Data 30Dec2019 to 01Jan2020 (GMT)

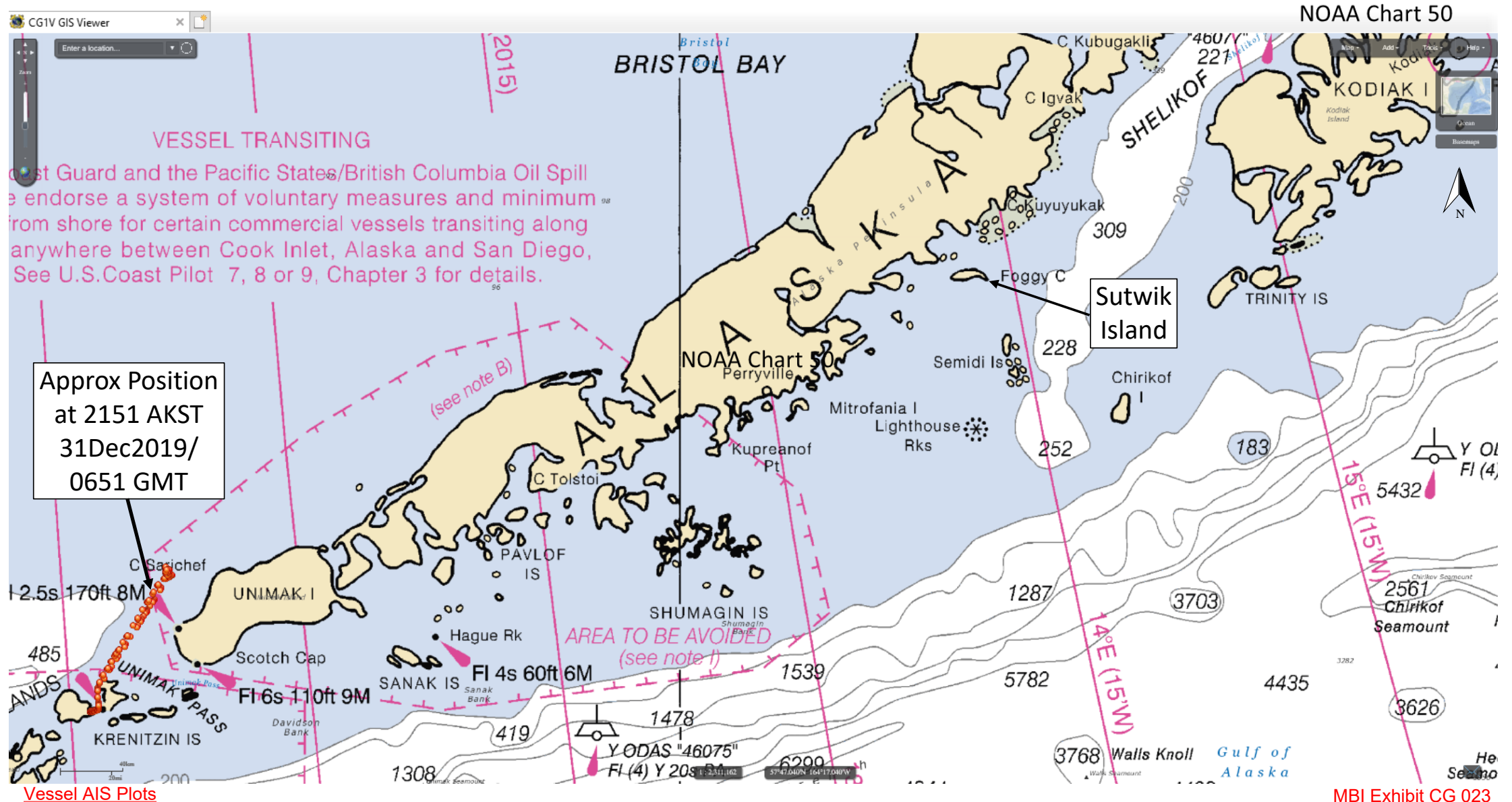


VESSEL TRANSITING  
U.S. Coast Guard and the Pacific States/British Columbia Oil Spill Force endorse a system of voluntary measures and minimum distances from shore for certain commercial vessels transiting along the coast anywhere between Cook Inlet, Alaska and San Diego, California. See U.S. Coast Pilot 7, 8 or 9, Chapter 3 for details.

Approx Position  
at 2152 AKST  
31Dec2019/  
0652 GMT

AREA TO BE AVOIDED  
(see note!)

NEW VENTURE AIS Data 30Dec2019 to 01Jan2020 (GMT)



VESSEL TRANSITING  
The U.S. Coast Guard and the Pacific States/British Columbia Oil Spill Response Team endorse a system of voluntary measures and minimum standards for vessels operating from shore for certain commercial vessels transiting along the coast anywhere between Cook Inlet, Alaska and San Diego, California. See U.S. Coast Pilot 7, 8 or 9, Chapter 3 for details.

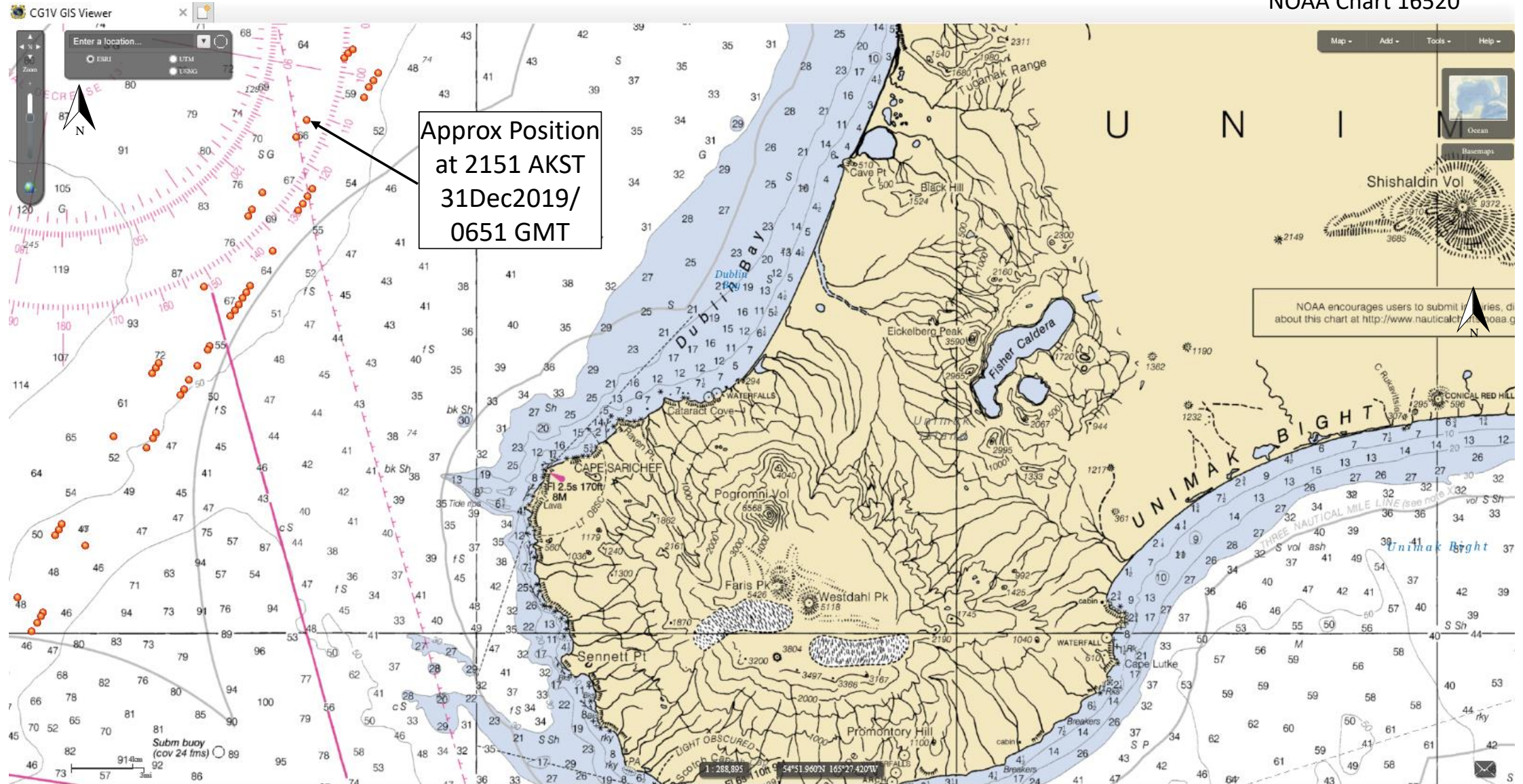
Approx Position  
at 2151 AKST  
31Dec2019/  
0651 GMT

Vessel AIS Plots

No part of a report of a marine casualty investigation shall be admissible as evidence in any civil or administrative proceeding, other than an administrative proceeding initiated by the United States. 46 U.S.C. §6308.

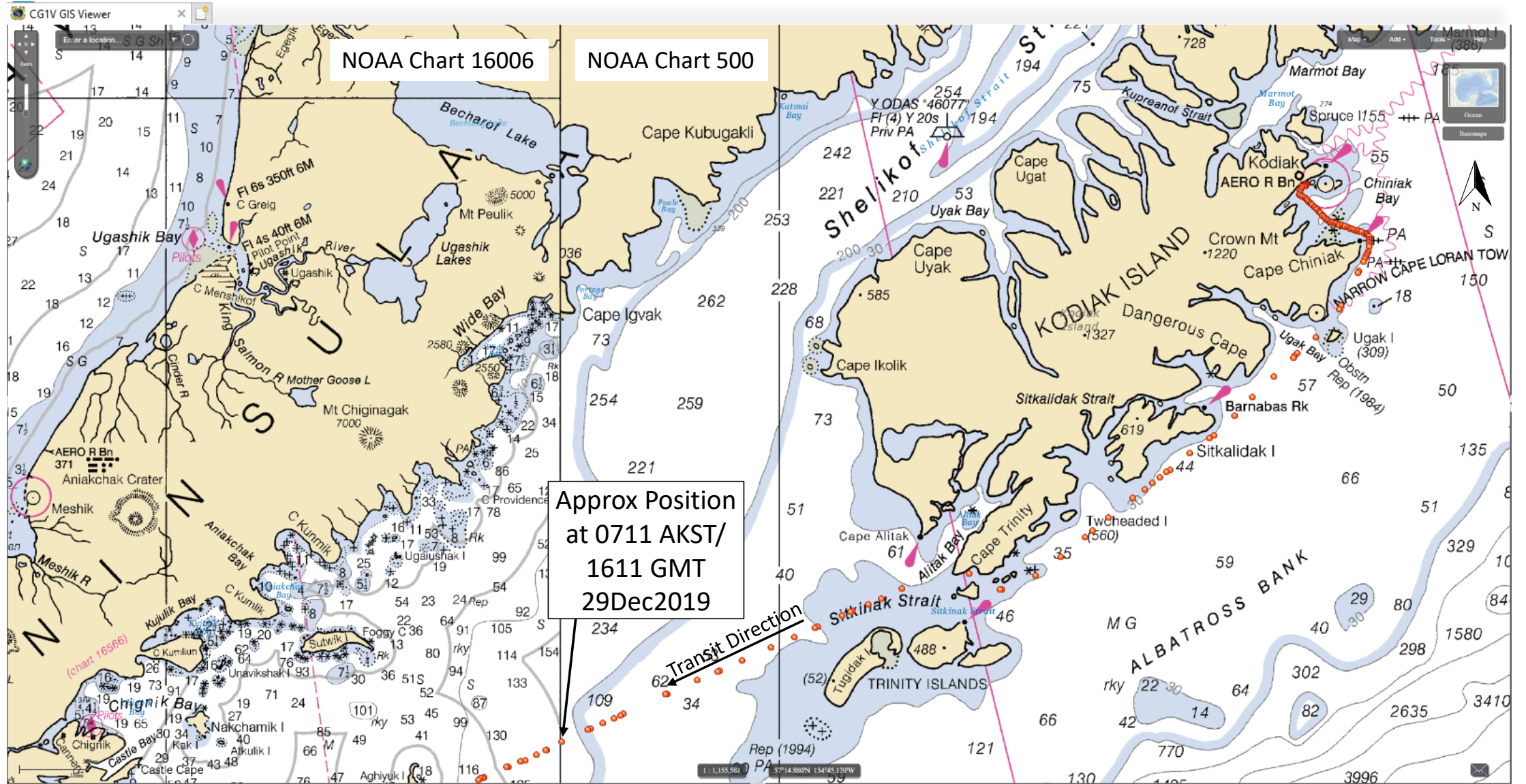
### NEW VENTURE AIS Data 30Dec2019 to 01Jan2020 (GMT)

NOAA Chart 16520



Vessel AIS Plots

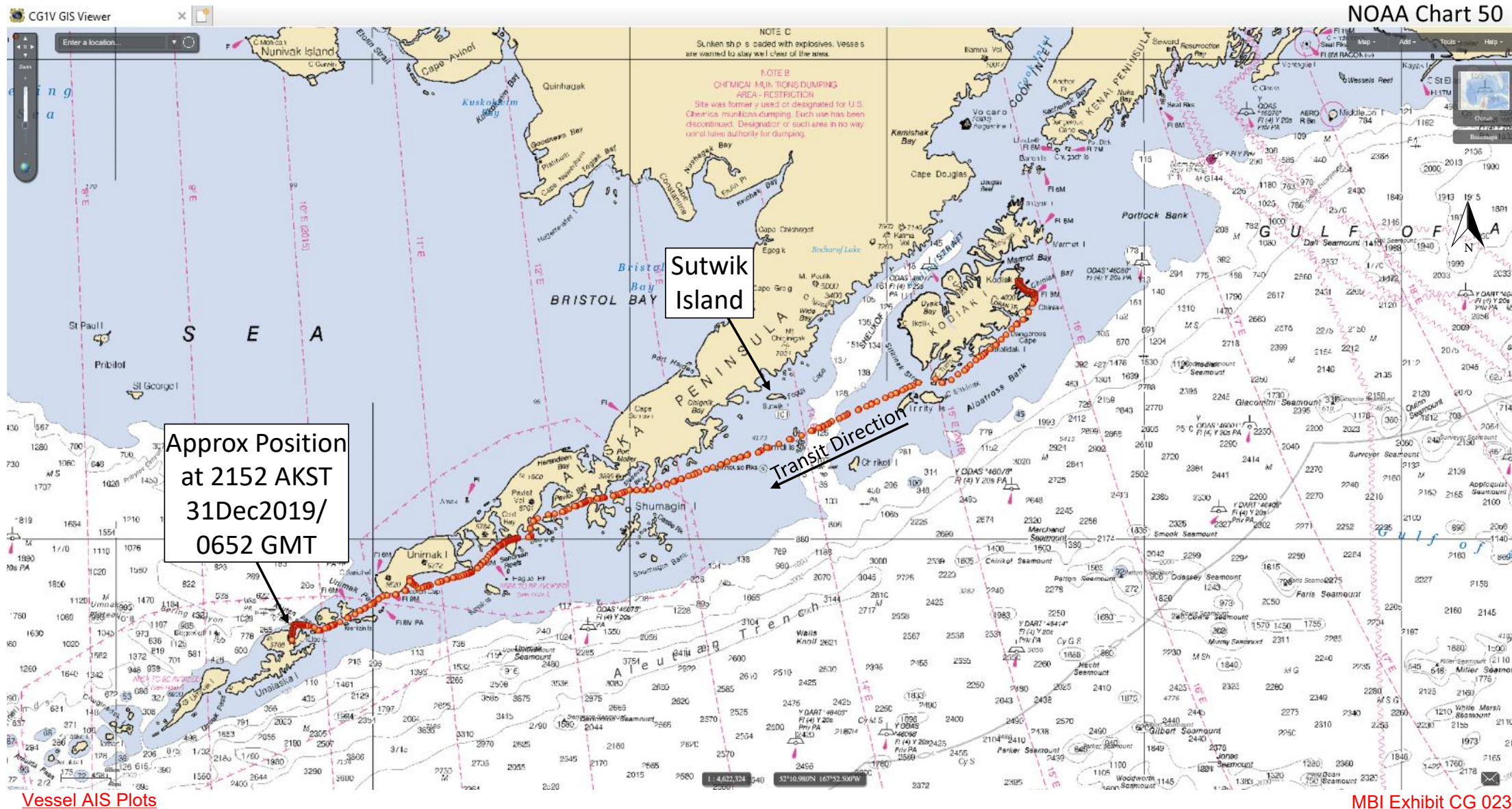
### AMATULI AIS Data 29Dec2019 (GMT)



Vessel AIS Plots

No part of a report of a marine casualty investigation shall be admissible as evidence in any civil or administrative proceeding, other than an administrative proceeding initiated by the United States. 46 U.S.C. §6308.

### AMATULI AIS Data 28Dec2019 to 02Jan2020 (GMT)



Vessel AIS Plots

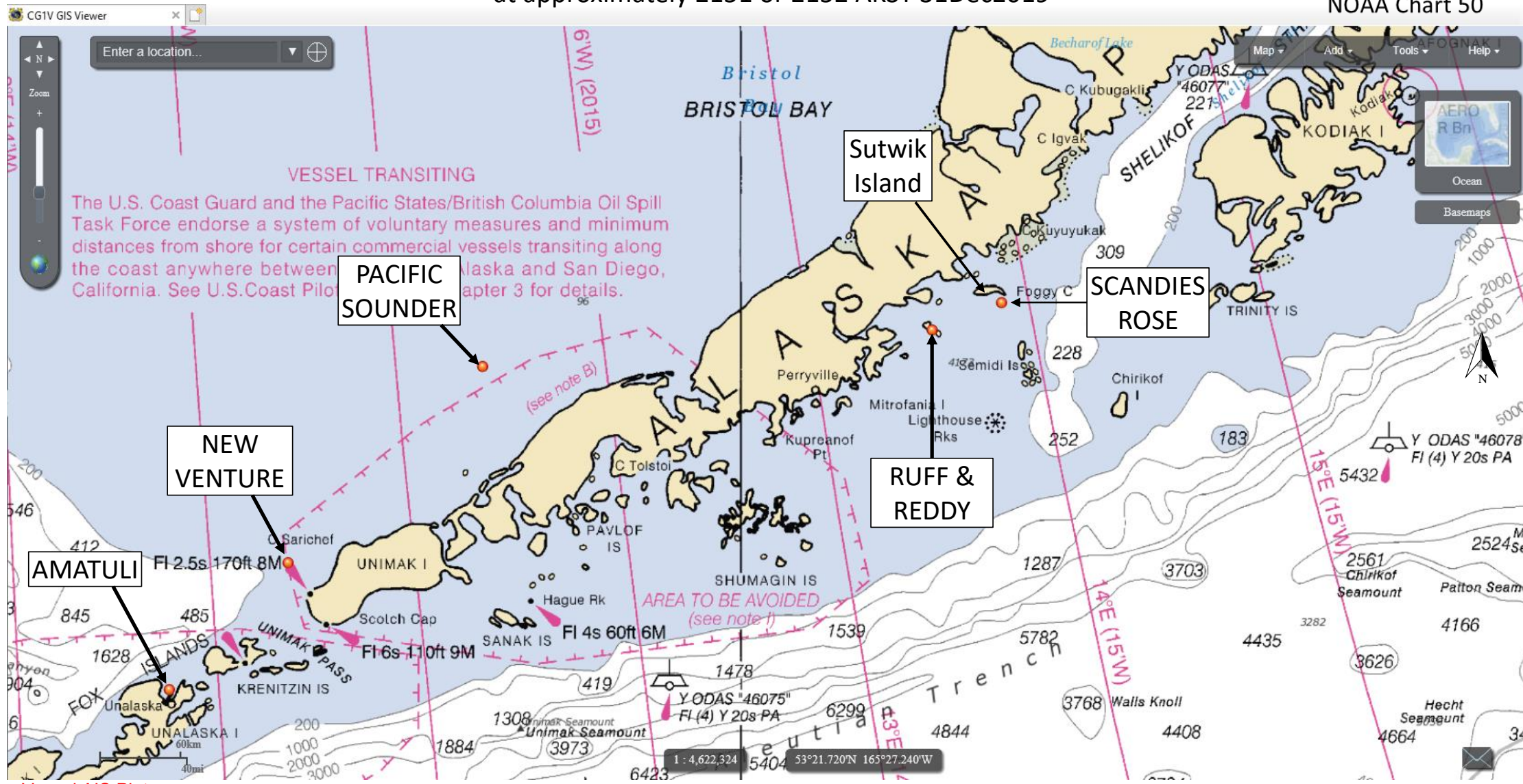
MBI Exhibit CG 023  
Page 16 of 17



No part of a report of a marine casualty investigation shall be admissible as evidence in any civil or administrative proceeding, other than an administrative proceeding initiated by the United States. 46 U.S.C. §6308.

### Vessel Positions Relative to SCANDIES ROSE at approximately 2151 or 2152 AKST 31Dec2019

NOAA Chart 50



Vessel AIS Plots