



**FACTUAL REPORT OF INVESTIGATION ATTACHMENT**

**Burbank Inspection Photographs**

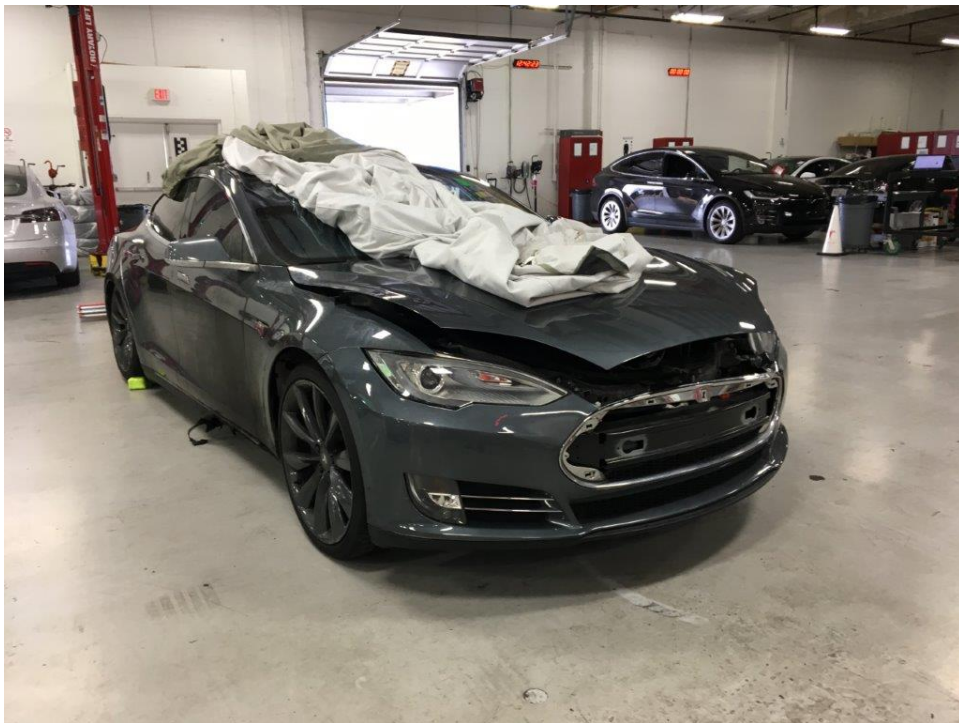
**West Hollywood, CA**

**HWY18FH014**

(26 pages)



**Burbank Inspection Photo 1: view showing the left front of the Tesla**



**Burbank Inspection Photo 2: view showing the right front of the Tesla**



**Burbank Inspection Photo 3: view showing the right side of the Tesla**



**Burbank Inspection Photo 4: view showing the left side of the Tesla**



**Burbank Inspection Photo 5: view showing detail of the cut away left front fender panel and exposed area of the wheel well**



**Burbank Inspection Photo 6: view showing the back end of the Tesla**



**Burbank Inspection Photo 7: view showing the front end of the Tesla with the hood opened**



**Burbank Inspection Photo 8: view showing details of the right (passenger) side of the firewall**



**Burbank Inspection Photo 9: view showing details of the left (driver's) side of the firewall**



**Burbank Inspection Photo 10: Left Front Wheel Well Access with portions of inner fender removed**



**Burbank Inspection Photo 11: Left Front Wheel Well Access with portions of inner fender removed**



**Burbank Inspection Photo 12: left front underside iso view**



**Burbank Inspection Photo 13: damage to left front underside**



**Burbank Inspection Photo 14: underside**





**Burbank Inspection Photo 15: right rear underside iso view**



**Burbank Inspection Photo 16: underside rear cover top side**



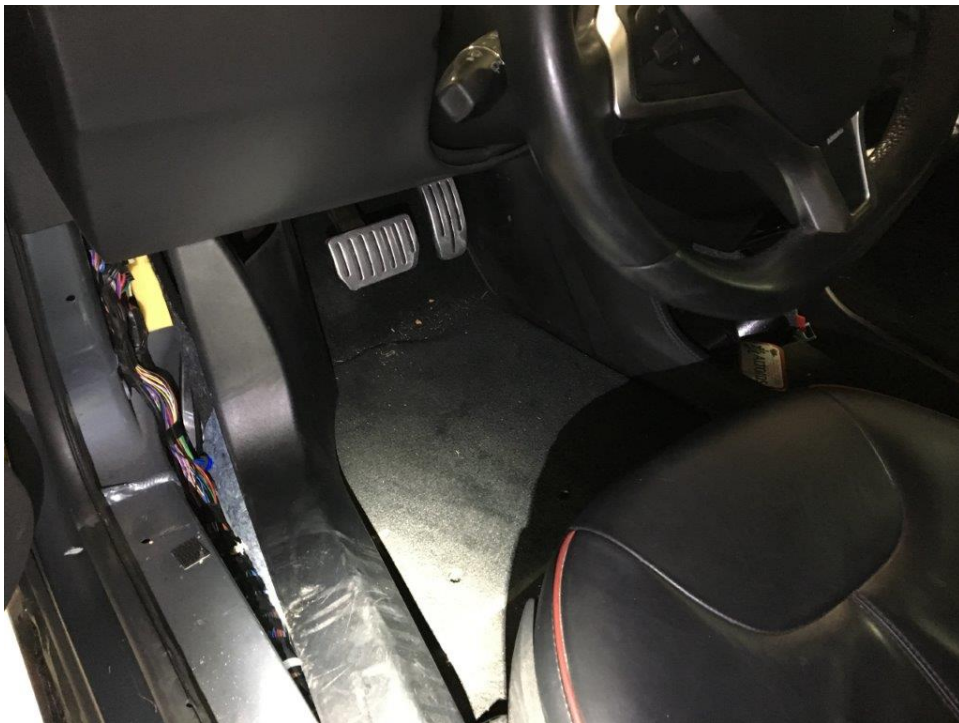
**Burbank Inspection Photo 17: damage to rear motor and deflector overall**



**Burbank Inspection Photo 18: damage to rear motor and deflector**



**Burbank Inspection Photo 19: interior**



**Burbank Inspection Photo 20: left front rocker panel interior**



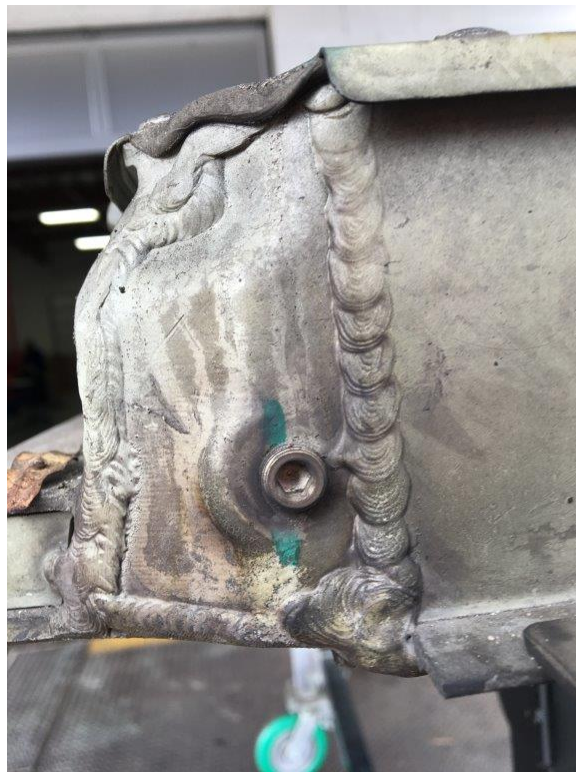
**Burbank Inspection Photo 21: interior**



**Burbank Inspection Photo 22: interior back, seat flipped up to see battery access**



**Burbank Inspection Photo 23: battery pack as removed, aft looking forward**



**Burbank Inspection Photo 24: air pressure test port**



**Burbank Inspection Photo 25: left front pack as dropped from vehicle**



**Burbank Inspection Photo 26: top left front battery pack as removed, showing rodent nest**



**Burbank Inspection Photo 27: view showing left side front vents, after cover has been removed**



**Burbank Inspection Photo 28: left vents, front looking aft, cover removed**



**Burbank Inspection Photo 29: view showing right side front vents, after cover has been removed**



**Burbank Inspection Photo 30: view showing right front middle vents, after cover has been removed**





**Burbank Inspection Photo 31: view showing right middle and right rear vents, after cover has been removed**



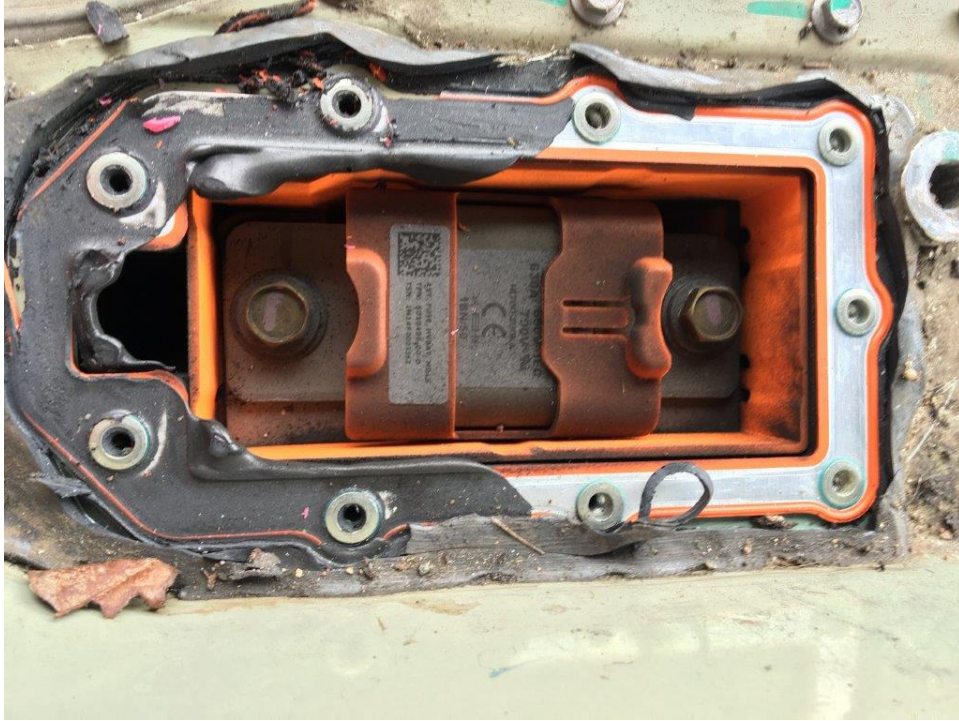
**Burbank Inspection Photo 32: view showing right rear vents, after cover has been removed**



**Burbank Inspection Photo 33: battery case top front view, plastic cover removed**



**Burbank Inspection Photo 34: left front battery pack, showing thermal damage**



**Burbank Inspection Photo 35: high voltage terminals**



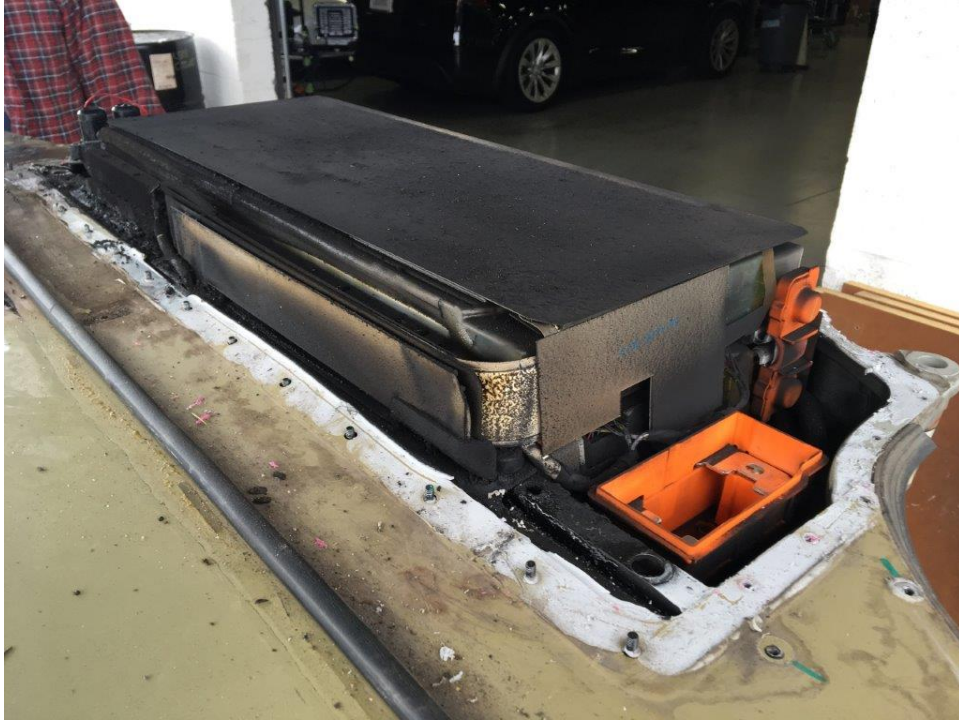
**Burbank Inspection Photo 36: view showing voltage test to aft terminal of battery case**



**Burbank Inspection Photo 37: view showing voltage test to forward terminal of battery case**



**Burbank Inspection Photo 38: left front, front module cover removed**



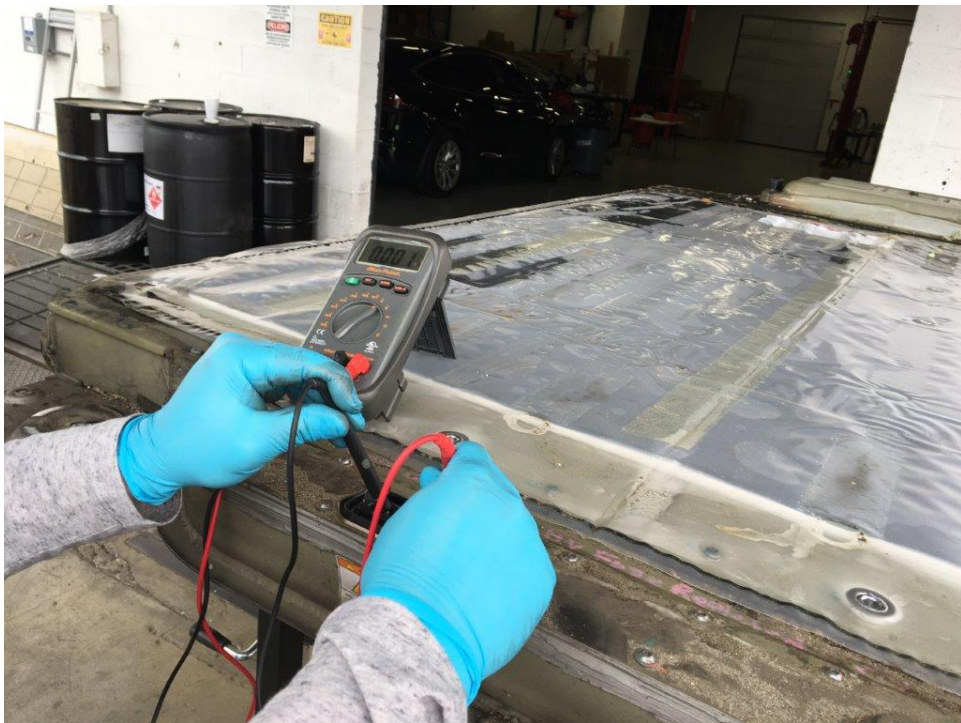
**Burbank Inspection Photo 39: right front, cover for front modules 15 and 16 removed**



**Burbank Inspection Photo 40: rear term check 1**



**Burbank Inspection Photo 41: rear term check 2**



**Burbank Inspection Photo 42: rear term check 3**



**Burbank Inspection Photo 43: removing battery case cover at rear**



**Burbank Inspection Photo 44: aft access panel with cover removed**



**Burbank Inspection Photo 45: left side of cover partially removed and bent upwards, front looking aft, front modules cover for 15 and 16 removed**



**Burbank Inspection Photo 46: cover partially removed and bent upwards, left side modules numbered**





**Burbank Inspection Photo 47: cover removed aft looking forward**



**Burbank Inspection Photo 48: right front with covers removed and insulation layer of 13 and 15 removed**



**Burbank Inspection Photo 49: left front with covers removed and insulation for 11 to 14 removed**