

WEIGHT AND BALANCE / PERFORMANCE CALCULATIONS

DASSAULT FALCON 900EX EASy SPECIFICATIONS

Takeoff Distance 5215 ft
Balanced Field Length 5215 ft
Max T/O Weight 48,300 lbs.
Fuel Capacity 21,000 lbs.
Payload with Full Fuel 2,800lbs

ASSUMED PERFORMANCE DATA

AIRFIELD KMFY

- No NOTAM's
- Runway slope =0.28%
- TODA = ASDA = TORA = 4,598 ft
- No obstacle or climb limit

WEATHER

- Dry runway
- Wind calm
- QNH = 29.97 inHg
- OAT = 14°C

TAKE-OFF CONFIGURATION

- 20° Slats / Flaps (SF2)
- Static – rated thrust takeoff

AIRCRAFT LOADING

- Empty Weight 26,136 lbs.
- Default 14 seat configuration
- 3 Crew (2 pilots + 1 cabin crew)
- 2 passengers on seats #3 and #4 = 400 lbs
- Standard operating equipment = 1,510 lbs
- No cargo
- Fuel load at ramp = 20,500 lbs
- Approx. Fuel burn for engine start/taxi = 528 lbs

CALCULATED TAKE-OFF PERFORMANCE DATA @ SF2

Take-off Weight = 48,039 lbs
Balanced Field Length 5,173 ft
Take-off Speeds V1 =124 kts
Vr = 133kts

TOW > MTOW (45,064 lbs)

BFL > TORA (4,598 ft)

**Vr > airspeed at which rotation was attempted between
(between 110 and 123 KIAS)**



Figure 1. Accident Flight Takeoff Profile

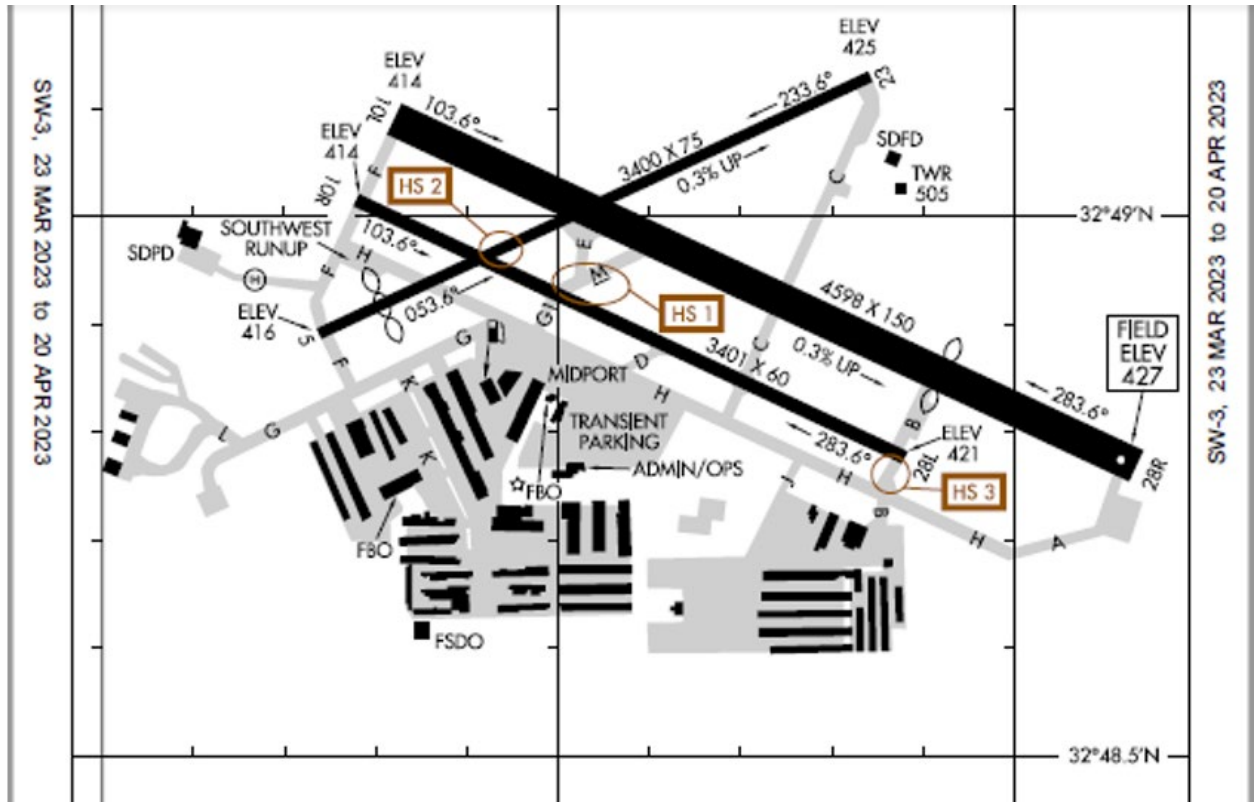


Figure 2. KMYF Airport Chart

Dassault Falcon 900EX EASy
 Engine: TFE731-60
 AFM: DGT84972 Rev 16
 Obstacle Criteria: FAA AC 120-91

**TAKEOFF PERFORMANCE
 FLAPS SF2**

MYF / KMYF
 MONTGOMERY-GIBBS EXECUTIVE
 SAN DIEGO, CA
 Elevation: 427

Configuration:

- NO OPTIONS SELECTED

Runway	28L	28R	Line-Up
TORA (FT)	3401	4598	0
TODA (FT)	3401	4598	0
ASDA (FT)	3401	4598	0
SLOPE (%)	-0.21	-0.28	

RUNWAY/OBSTACLE LIMIT						CLIMB LIMIT
TEMP (°C)	PWR	LIMIT WT/CODE	LVL OFF	LIMIT WT/CODE	LVL OFF	WEIGHT
-20	90.5	40003 -O	1427	47609 -O	1427	49000
-15	91.4	39632 -O	1427	47208 -O	1427	49000
-10	92.3	39273 -O	1427	46812 -O	1427	49000
-5	93.1	38925 -O	1427	46422 -O	1427	49000
0	94.0	38589 -O	1427	46042 -O	1427	49000
2	94.4	38454 -O	1427	45916 -O	1427	49000
4	94.8	38318 -O	1427	45791 -O	1427	49000
6	95.2	38187 -O	1427	45668 -O	1427	49000
8	95.5	38058 -O	1427	45545 -O	1427	49000
10	95.9	37930 -O	1427	45424 -O	1427	49000
12	96.2	37805 -O	1427	45303 -O	1427	49000
14	96.6	37682 -O	1427	45179 -O	1427	49000
16	96.9	37534 -O	1427	45014 -O	1427	49000
18	97.3	37357 -O	1427	44812 -O	1427	49000
20	97.6	37180 -O	1427	44614 -O	1427	49000
22	98.0	37004 -O	1427	44419 -O	1427	49000
24	98.3	36829 -O	1427	44228 -O	1427	49000
26	98.7	36651 -O	1427	44039 -O	1427	49000
28	98.8	36476 -O	1427	43849 -O	1427	49000
30	98.8	36306 -O	1427	43661 -O	1427	49000
32	98.5	35814 -O	1427	42984 -O	1427	49000
34	98.0	35330 -O	1427	42342 -O	1427	49000
36	97.5	34780 -O	1427	41695 -O	1427	49000
38	96.9	34244 -O	1427	41042 -O	1427	49000
40	96.4	33752 -O	1427	40457 -O	1427	49000
45	95.0	32465 -O	1427	38674 -O	1427	49000
50	93.3	31056 -O	1427	36928 -O	1427	46319

Corrections	LBS	FT	LBS	FT	LBS
HWD per KT	+120	0	+115	0	
TWD per KT	NA	NA	-530	0	
QNH per +0.1	+28	0	+33	0	+118
QNH per -0.1	-119	0	-145	0	-122
ANTI-ICE ON	-481	0	-678	0	NA

NA = No valid maximum weight found. Data may be invalid after 28 days from: 04Feb21
 Maximum allowed weight is the minimum of the corrected Runway/Obstacle Limit, corrected Climb Limit, and the Structural Limit of the aircraft.



Figure 3. APG Performance Chart KMYF Runway 28R

WEIGHT AND BALANCE

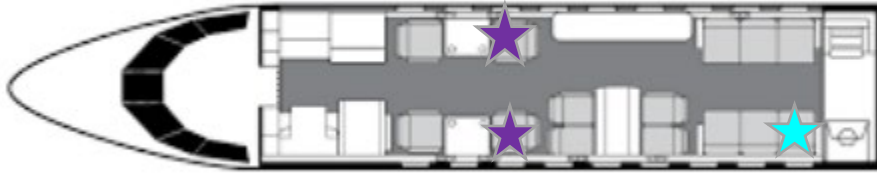


Figure 4. Cabin Seats Occupied

CG LOCATION

- Cabin crew = seat 14
- Passengers = seat 3 and 4
- BOW CG = 22.6%
- ZFW CG = 20.9%
- TOW CG = 15.2%

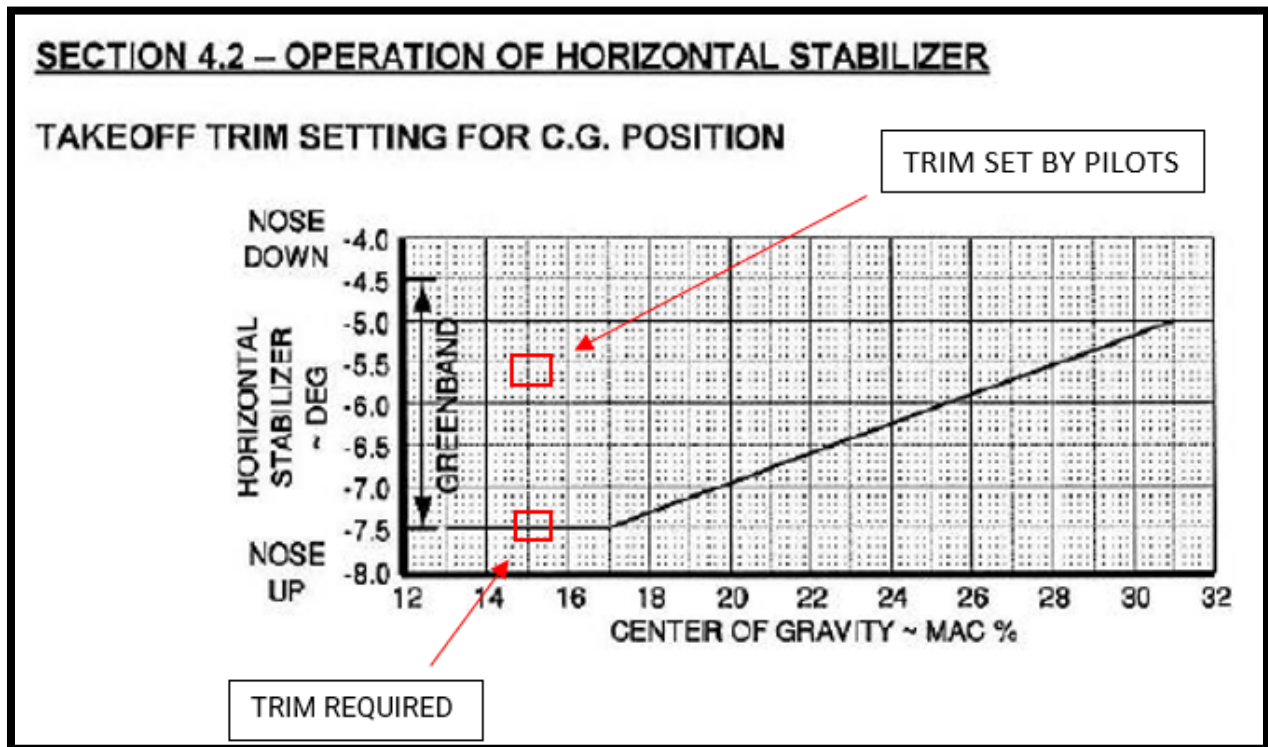


Figure 5. AFM Take-off Trim and CG chart

F900EX EASY	LIMITATIONS AIRPLANE GENERAL WEIGHTS AND LOADING	02-10-10
CODDE 2		PAGE 2 / 6
APF9-0609 Code 001		Initial Release

CENTER OF GRAVITY LIMITS

