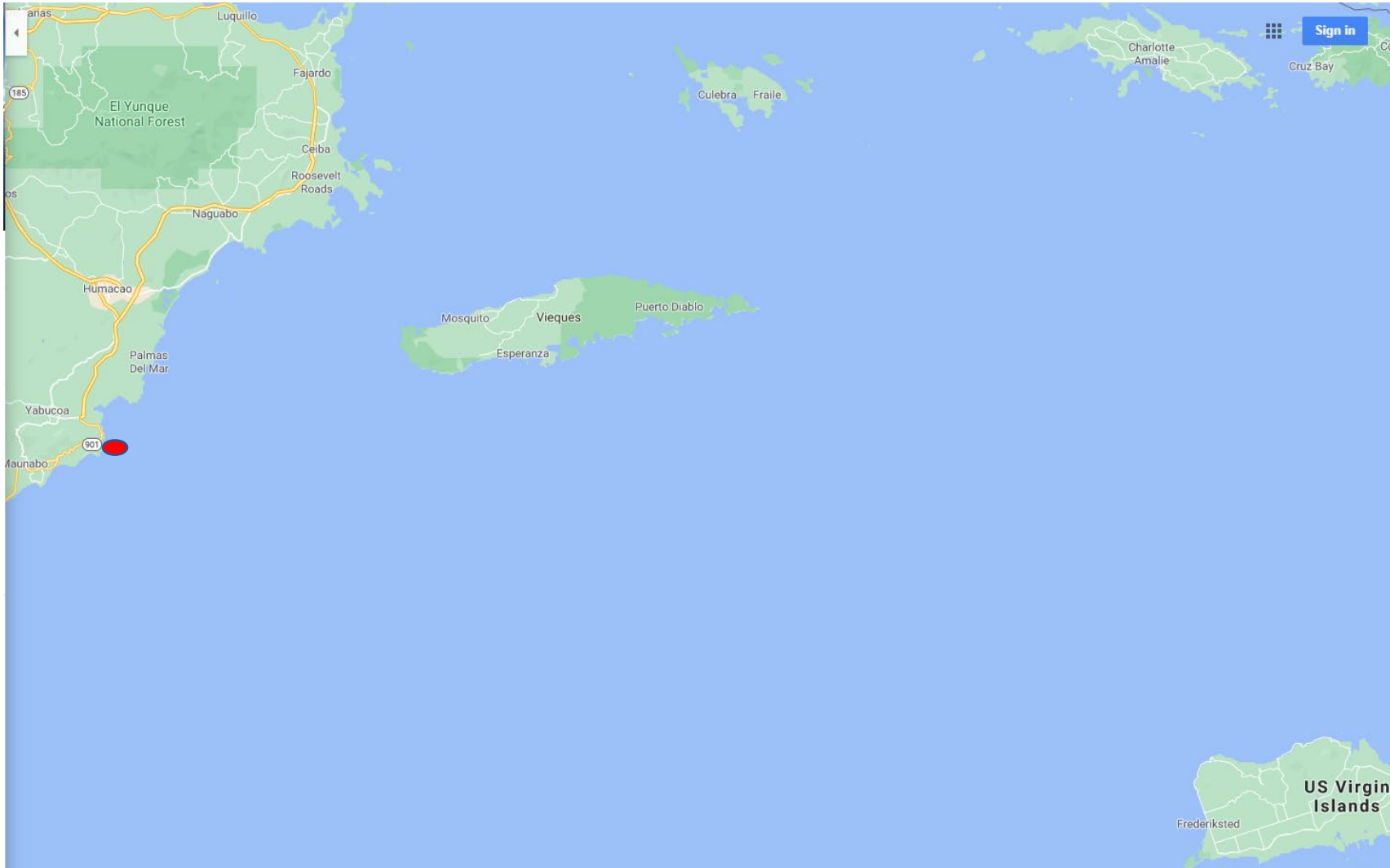


Weather and Sunset information for DCA21011 Sinking of the Towing Vessel *Proassist III* on December 24, 2020 at 1742 Atlantic standard time (coordinated universal time – 4 hours)

Map of area. Approximate location of the sunken *Proassist III* ●.



Real Time Weather information from Vieques, PR.

| #YY | M | DD | hh | m | WDIR | WSP | GST | WVHT | DPD | APD | MW | PRES | ATMP | WTMP | DEWP | VIS | PTDY | TIDE |
|------|------|----|----|------|------|-----|------|------|-----|------|-----|--------|------|------|------|-----|------|------|
| #yr | mody | hr | mn | degT | m/s | m/s | m | sec | sec | degT | hPa | degC | degC | degC | nmi | hPa | ft | |
| 2020 | 12 | 26 | 16 | 00 | 110 | 2.0 | 3.0 | 1.1 | 11 | MM | 29 | 1011.4 | 26.5 | 27.4 | MM | MM | -0.6 | MM |
| 2020 | 12 | 26 | 15 | 50 | 100 | 3.0 | 3.0 | MM | MM | MM | MM | 1011.5 | 26.6 | MM | MM | MM | MM | MM |
| 2020 | 12 | 26 | 15 | 40 | 110 | 3.0 | 4.0 | MM | MM | MM | MM | 1011.5 | 26.5 | MM | MM | MM | MM | MM |
| 2020 | 12 | 26 | 15 | 30 | 100 | 4.0 | 5.0 | MM | MM | MM | MM | 1011.7 | 26.5 | MM | MM | MM | MM | MM |
| 2020 | 12 | 26 | 15 | 20 | 90 | 3.0 | 4.0 | MM | MM | MM | MM | 1011.7 | 26.5 | MM | MM | MM | MM | MM |
| 2020 | 12 | 24 | 15 | 20 | 80 | 7.0 | 12.0 | MM | MM | MM | MM | 1016.2 | 27.2 | MM | MM | MM | MM | MM |
| 2020 | 12 | 24 | 15 | 10 | 80 | 7.0 | 9.0 | 1.7 | MM | MM | 67 | 1016.3 | 27.3 | MM | MM | MM | MM | MM |
| 2020 | 12 | 24 | 15 | 00 | 80 | 7.0 | 9.0 | 1.7 | 6 | MM | 67 | 1016.3 | 27.2 | 27.4 | MM | MM | +0.7 | MM |
| 2020 | 12 | 24 | 14 | 50 | 80 | 8.0 | 10.0 | MM | MM | MM | MM | 1016.3 | 27.2 | MM | MM | MM | MM | MM |
| 2020 | 12 | 24 | 14 | 40 | 80 | 8.0 | 10.0 | MM | MM | MM | MM | 1016.4 | 27.2 | MM | MM | MM | MM | MM |
| 2020 | 12 | 24 | 14 | 30 | 80 | 8.0 | 10.0 | MM | MM | MM | MM | 1016.5 | 27.2 | MM | MM | MM | MM | MM |
| 2020 | 12 | 24 | 14 | 20 | 80 | 8.0 | 10.0 | MM | MM | MM | MM | 1016.5 | 27.2 | MM | MM | MM | MM | MM |
| 2020 | 12 | 24 | 14 | 10 | 80 | 8.0 | 10.0 | 1.8 | MM | MM | 62 | 1016.5 | 27.3 | MM | MM | MM | MM | MM |
| 2020 | 12 | 24 | 14 | 00 | 90 | 7.0 | 9.0 | 1.8 | 7 | MM | 62 | 1016.6 | 27.2 | 27.4 | MM | MM | +1.7 | MM |
| 2020 | 12 | 24 | 13 | 50 | 90 | 8.0 | 9.0 | MM | MM | MM | MM | 1016.6 | 27.2 | MM | MM | MM | MM | MM |
| 2020 | 12 | 24 | 13 | 40 | 80 | 7.0 | 9.0 | MM | MM | MM | MM | 1016.6 | 27.2 | MM | MM | MM | MM | MM |
| 2020 | 12 | 24 | 13 | 30 | 90 | 8.0 | 10.0 | MM | MM | MM | MM | 1016.5 | 27.1 | MM | MM | MM | MM | MM |
| 2020 | 12 | 24 | 13 | 20 | 80 | 8.0 | 9.0 | MM | MM | MM | MM | 1016.5 | 27.1 | MM | MM | MM | MM | MM |
| 2020 | 12 | 24 | 13 | 10 | 80 | 8.0 | 10.0 | 1.6 | MM | MM | 61 | 1016.3 | 27.2 | MM | MM | MM | MM | MM |

| | | | | | | | | | | | | | | | | | | |
|------|----|----|----|----|----|-----|------|-----|----|----|----|--------|------|------|----|----|------|----|
| 2020 | 12 | 24 | 13 | 00 | 80 | 8.0 | 10.0 | 1.6 | 7 | MM | 61 | 1016.3 | 27.1 | 27.4 | MM | MM | +1.8 | MM |
| 2020 | 12 | 24 | 12 | 50 | 90 | 8.0 | 10.0 | MM | MM | MM | MM | 1016.2 | 27.1 | MM | MM | MM | MM | MM |
| 2020 | 12 | 24 | 12 | 40 | 80 | 8.0 | 10.0 | MM | MM | MM | MM | 1016.0 | 27.1 | MM | MM | MM | MM | MM |
| 2020 | 12 | 24 | 12 | 30 | 80 | 9.0 | 11.0 | MM | MM | MM | MM | 1015.9 | 27.1 | MM | MM | MM | MM | MM |
| 2020 | 12 | 24 | 12 | 20 | 80 | 9.0 | 11.0 | MM | MM | MM | MM | 1015.9 | 27.1 | MM | MM | MM | MM | MM |
| 2020 | 12 | 24 | 12 | 10 | 80 | 9.0 | 11.0 | 1.5 | MM | MM | 61 | 1015.7 | 27.0 | MM | MM | MM | MM | MM |
| 2020 | 12 | 24 | 12 | 00 | 90 | 8.0 | 10.0 | 1.5 | 7 | MM | 61 | 1015.6 | 27.0 | 27.4 | MM | MM | +1.7 | MM |
| 2020 | 12 | 24 | 11 | 50 | 80 | 8.0 | 10.0 | MM | MM | MM | MM | 1015.6 | 27.0 | MM | MM | MM | MM | MM |
| 2020 | 12 | 24 | 11 | 40 | 70 | 8.0 | 10.0 | MM | MM | MM | MM | 1015.4 | 27.0 | MM | MM | MM | MM | MM |
| 2020 | 12 | 24 | 11 | 30 | 70 | 8.0 | 11.0 | MM | MM | MM | MM | 1015.2 | 27.0 | MM | MM | MM | MM | MM |
| 2020 | 12 | 24 | 11 | 20 | 70 | 8.0 | 11.0 | MM | MM | MM | MM | 1015.1 | 26.9 | MM | MM | MM | MM | MM |
| 2020 | 12 | 24 | 11 | 10 | 70 | 8.0 | 10.0 | 1.6 | MM | MM | 55 | 1014.9 | 26.9 | MM | MM | MM | MM | MM |
| 2020 | 12 | 24 | 11 | 00 | 80 | 8.0 | 10.0 | 1.6 | 15 | MM | 55 | 1014.9 | 26.8 | 27.4 | MM | MM | +1.0 | MM |
| 2020 | 12 | 24 | 10 | 50 | 80 | 9.0 | 10.0 | MM | MM | MM | MM | 1014.7 | 26.8 | MM | MM | MM | MM | MM |
| 2020 | 12 | 24 | 10 | 40 | 70 | 8.0 | 10.0 | MM | MM | MM | MM | 1014.7 | 26.8 | MM | MM | MM | MM | MM |
| 2020 | 12 | 24 | 10 | 30 | 70 | 8.0 | 11.0 | MM | MM | MM | MM | 1014.5 | 26.9 | MM | MM | MM | MM | MM |
| 2020 | 12 | 24 | 10 | 20 | 70 | 7.0 | 9.0 | MM | MM | MM | MM | 1014.5 | 26.7 | MM | MM | MM | MM | MM |
| 2020 | 12 | 24 | 10 | 10 | 70 | 7.0 | 9.0 | 1.6 | MM | MM | 57 | 1014.5 | 26.7 | MM | MM | MM | MM | MM |
| 2020 | 12 | 24 | 10 | 00 | 70 | 7.0 | 9.0 | 1.6 | 14 | MM | 57 | 1014.5 | 26.7 | 27.4 | MM | MM | +0.3 | MM |
| 2020 | 12 | 24 | 09 | 50 | 80 | 7.0 | 9.0 | MM | MM | MM | MM | 1014.4 | 26.8 | MM | MM | MM | MM | MM |

Station ESPP4 - 9752695 - Esperanza, Viequez Island, PR

Owned and maintained by [NOAA's National Ocean Service](#)

Water Level Observation Network

18.094 N 65.471 W (18°5'38" N 65°28'17" W)

Site elevation: 2 m above mean sea level

Air temp height: 8.2 m above site elevation

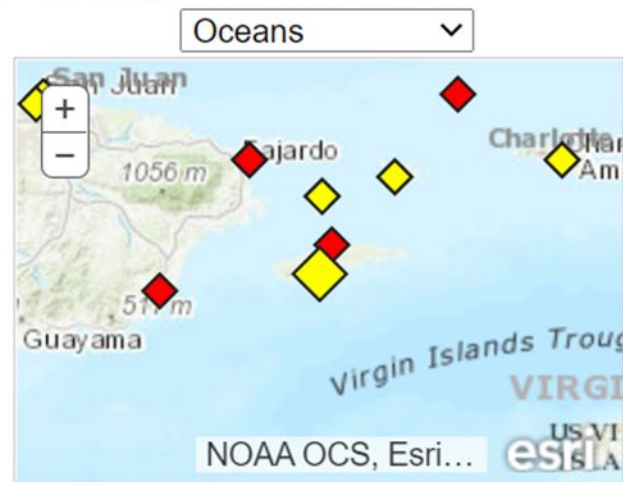
Anemometer height: 8.5 m above site elevation

Barometer elevation: 3.4 m above mean sea level


Sea temp depth: 1.6 m below MLLW


[Search And Rescue \(SAR\) Data](#)

[Meteorological Observations from Nearby Stations and Ships](#) 



Large icon indicates selected station. [Disclaimer](#)

 Stations with recent data

 Stations with no data in last 8 hours
(24 hours for tsunami stations)

Station ESPP4 - 9752695 - Esperanza, Viequez Island, PR

Owned and maintained by [NOAA's National Ocean Service](#)

18.094 N 65.471 W (18°5'38" N 65°28'17" W) [Links for real time data for station ESPP4 are listed below:](#)

(Times are in GMT, Wind Speed is in m/s, and Wave Height is in meters)

#YY MM DD hh mm WDIR WSPD GST WVHT DPD APD MWD PRES ATMP WTMP DEWP VIS PTDY TIDE

| #YY | MM | DD | hh | mm | WDIR | WSPD | GST | WVHT | DPD | APD | MWD | PRES | ATMP | WTMP | DEWP | VIS | PTDY | TIDE |
|------|----|----|----|----|------|------|------|------|-----|-----|-----|--------|------|------|------|-----|------|------|
| 2020 | 12 | 24 | 14 | 30 | 90 | 6.2 | 10.8 | MM | MM | MM | MM | 1017.8 | MM | 26.1 | MM | | | |
| 2020 | 12 | 24 | 14 | 24 | 90 | 6.2 | 9.3 | MM | MM | MM | MM | 1017.8 | MM | 26.1 | MM | | | |
| 2020 | 12 | 24 | 14 | 18 | 80 | 5.7 | 8.8 | MM | MM | MM | MM | 1017.7 | MM | 26.1 | MM | | | |
| 2020 | 12 | 24 | 14 | 12 | 80 | 6.2 | 10.3 | MM | MM | MM | MM | 1017.7 | MM | 26.0 | MM | | | |
| 2020 | 12 | 24 | 14 | 06 | 100 | 5.7 | 10.8 | MM | MM | MM | MM | 1017.7 | MM | 26.0 | MM | | | |
| 2020 | 12 | 24 | 14 | 00 | 100 | 6.7 | 9.8 | MM | MM | MM | MM | 1017.7 | MM | 26.0 | MM | | | |
| MM | MM | MM | MM | MM | MM | MM | MM | MM | MM | MM | MM | MM | MM | MM | MM | MM | MM | MM |
| MM | MM | MM | MM | MM | MM | MM | MM | MM | MM | MM | MM | MM | MM | MM | MM | MM | MM | MM |

2020 12 24| 13 54 90 5.7 9.8 MM MM MM MM 1017.7 MM 26.0 MM

MM MM MM

2020 12 24 13 48 90 7.2 10.3 MM MM MM MM 1017.8 MM 26.0 MM

MM MM MM

2020 12 24 13 42 90 6.2 10.3 MM MM MM MM 1017.8 MM 26.0 MM

MM MM MM

2020 12 24 13 36 90 5.1 8.2 MM MM MM MM 1017.7 MM 26.0 MM

MM MM MM

2020 12 24 13 30 90 5.7 9.3 MM MM MM MM 1017.7 MM 25.9 MM

MM MM MM

2020 12 24 13 24 80 6.7 9.3 MM MM MM MM 1017.6 MM 25.9 MM

MM MM MM

2020 12 24 13 18 80 4.1 8.2 MM MM MM MM 1017.6 MM 25.9 MM

MM MM MM

2020 12 24 13 12 80 4.6 7.7 MM MM MM MM 1017.6 MM 25.9 MM

MM MM MM

2020 12 24 13 06 90 5.1 8.2 MM MM MM MM 1017.5 MM 25.9 MM

MM MM MM

2020 12 24 13 00 90 5.1 8.2 MM MM MM MM 1017.5 MM 25.9 MM

Observations for C. AMALIE CYRIL E., Virgin Islands (TIST)

Location: 18.33N 64.97W 67 meters

1742 Atlantic standard time (coordinated universal time – 4 hours)

2153Z 23 Dec 2020 to 2253Z 24 Dec 2020

| STN | TIME | PMSL | ALTM | TMP | DEW | RH | DIR | SPD | GUS | PEAK | VIS | CLOUDS | Weather | MIN | MAX | P01 | PCP | |
|------|---------|--------|-------|------|------|------|------|------|------|-------|-------|--------|---------|--------|------|-------|-------|------|
| | DD/HHMM | hPa | inHg | F | F | % | deg | kt | kt | ddfff | mile | | | F | F | in | in | |
| ==== | ===== | ===== | ===== | ==== | ==== | ==== | ==== | ==== | ==== | ===== | ===== | ===== | ===== | ==== | ==== | ===== | ===== | |
| TIST | 24/2253 | 1014.9 | 29.97 | 79 | 69 | 72 | 80 | 9 | | | 10.0 | CLR | | | | | | |
| TIST | 24/2153 | 1014.5 | 29.96 | 79 | 69 | 72 | 80 | 10 | | | 10.0 | CLR | | | | | | |
| TIST | 24/2053 | 1013.4 | 29.93 | 79 | 70 | 74 | 80 | 13 | 20 | | 10.0 | CLR | | | | | 0.11 | |
| TIST | 24/1953 | 1014.3 | 29.95 | 78 | 71 | 79 | 80 | 11 | | | 10.0 | FEW050 | BKN065 | | | | 0.01 | |
| TIST | 24/1849 | | 29.96 | 75 | 72 | 89 | 70 | 12 | 27 | 11028 | 1.8 | SCT015 | BKN029 | OVC038 | +RA | FG | 0.10 | |
| TIST | 24/1835 | | 29.96 | 77 | 72 | 84 | 110 | 22 | 28 | 11028 | 6.0 | FEW013 | BKN023 | OVC038 | -RA | | 0.01 | |
| TIST | 24/1753 | 1014.6 | 29.96 | 83 | 68 | 61 | 90 | 13 | | | 10.0 | FEW029 | SCT042 | SCT060 | | 80 | 87 | |
| TIST | 24/1653 | 1015.4 | 29.98 | 85 | 68 | 57 | 70 | 15 | 21 | | 10.0 | SCT033 | | | | | | |
| TIST | 24/1553 | 1016.5 | 30.02 | 85 | 65 | 51 | 100 | 13 | | | 10.0 | SCT070 | | | | | | |
| TIST | 24/1453 | 1017.0 | 30.03 | 84 | 66 | 55 | 100 | 15 | 23 | 8026 | 10.0 | CLR | | | | | | |
| TIST | 24/1353 | 1017.2 | 30.04 | 85 | 66 | 53 | 90 | 18 | 24 | 9026 | 10.0 | CLR | | | | | | |
| TIST | 24/1253 | 1016.3 | 30.01 | 83 | 67 | 59 | 80 | 13 | 20 | | 10.0 | CLR | | | | | | |
| TIST | 24/1153 | 1016.5 | 30.02 | 80 | 66 | 62 | 90 | 11 | 19 | | 10.0 | CLR | | | 78 | 80 | | |
| TIST | 24/1053 | 1015.7 | 29.99 | 79 | 66 | 65 | 80 | 11 | | | 10.0 | CLR | | | | | | |
| TIST | 24/0953 | 1015.1 | 29.97 | 79 | 67 | 67 | 70 | 12 | | | 10.0 | CLR | | | | | | |
| TIST | 24/0853 | 1014.8 | 29.97 | 79 | 66 | 65 | 80 | 13 | | | 10.0 | CLR | | | | | | |
| TIST | 24/0753 | 1014.3 | 29.95 | 79 | 67 | 67 | 70 | 11 | 18 | 6026 | 10.0 | FEW031 | FEW036 | | | | | |
| TIST | 24/0653 | 1015.4 | 29.98 | 79 | 67 | 67 | 60 | 11 | 20 | | 10.0 | CLR | | | | | | |
| TIST | 24/0553 | 1015.9 | 30.00 | 78 | 66 | 66 | 70 | 11 | | | 10.0 | CLR | | | 77 | 79 | 0.00 | |
| TIST | 24/0453 | 1016.0 | 30.00 | 79 | 67 | 67 | 80 | 16 | 23 | | 10.0 | CLR | | | | | | |
| TIST | 24/0353 | 1016.3 | 30.01 | 79 | 69 | 72 | 70 | 8 | | | 10.0 | CLR | | | | | | |
| TIST | 24/0253 | 1016.4 | 30.02 | 77 | 71 | 82 | 90 | 8 | | | 10.0 | FEW026 | SCT036 | SCT070 | | | 0.00 | 0.00 |
| TIST | 24/0153 | 1016.8 | 30.03 | 79 | 70 | 74 | 80 | 10 | | | 10.0 | CLR | | | | | | |
| TIST | 24/0053 | 1016.5 | 30.02 | 78 | 70 | 76 | 70 | 7 | | | 10.0 | CLR | | | | | | |
| TIST | 23/2353 | 1015.9 | 30.00 | 78 | 70 | 76 | 70 | 7 | | | 10.0 | CLR | | | 78 | 86 | 0.00 | 0.00 |
| TIST | 23/2253 | 1015.5 | 29.99 | 79 | 69 | 72 | 60 | 9 | | | 10.0 | FEW060 | SCT120 | | | | | |
| TIST | 23/2153 | 1015.2 | 29.98 | 81 | 69 | 67 | 60 | 15 | 20 | | 10.0 | BKN027 | BKN036 | | | | | |

Observations for ROOSEVELT ROADS NAS, Puerto Rico (TJNR)

Location: 18.25N 65.63W 12 meters

1853Z 23 Dec 2020 to 1953Z 24 Dec 2020

| STN | TIME | PMSL | ALTM | TMP | DEW | RH | DIR | SPD | VIS | CLOUDS | P01 |
|------|---------|--------|-------|-----|-----|-----|-----|-----|-------|--------|--------|
| | DD/HHMM | hPa | inHg | F | F | % | deg | kt | mile | | in |
| ==== | ===== | ===== | ===== | === | === | === | === | === | ===== | ===== | ===== |
| TJNR | 24/1953 | 1015.7 | 29.99 | | | | | | | | |
| TJNR | 24/1853 | 1015.7 | 29.99 | | | | | | | | |
| TJNR | 24/1753 | 1015.7 | 29.99 | | | | | | | | |
| TJNR | 24/1653 | 1016.7 | 30.02 | | | | | | | | |
| TJNR | 24/1553 | 1017.7 | 30.05 | | | | | | | | |
| TJNR | 24/1453 | 1018.1 | 30.06 | | | | | | | | |
| TJNR | 24/1353 | 1018.4 | 30.07 | | | | | | | | |
| TJNR | 24/1253 | 1018.1 | 30.06 | | | | | | | | |
| TJNR | 24/1153 | 1017.4 | 30.04 | | | | | | | | |
| TJNR | 24/1053 | 1016.4 | 30.01 | | | | | | | | |
| TJNR | 24/0953 | 1016.4 | 30.01 | | | | | | | | |
| TJNR | 24/0853 | 1016.0 | 30.00 | | | | | | | | |
| TJNR | 24/0753 | 1015.7 | 29.99 | | | | | | | | |
| TJNR | 24/0653 | 1016.0 | 30.00 | | | | | | | | |
| TJNR | 24/0553 | 1016.4 | 30.01 | | | | | | | | |
| TJNR | 24/0453 | 1016.7 | 30.02 | | | | | | | | |
| TJNR | 24/0353 | 1017.1 | 30.03 | | | | | | | | |
| TJNR | 24/0253 | 1017.4 | 30.04 | | | | | | | | |
| TJNR | 24/0153 | 1017.4 | 30.04 | | | | | | | | |
| TJNR | 24/0053 | 1017.1 | 30.03 | | | | | | | | |
| TJNR | 23/2353 | 1016.7 | 30.02 | | | | | | | | |
| TJNR | 23/2253 | 1016.2 | 30.01 | 77 | 71 | 82 | | | | | 0.07 |
| TJNR | 23/2153 | 1015.9 | 30.00 | 78 | 69 | 74 | 50 | 5 | 10.0 | CLR | |
| TJNR | 23/2053 | 1015.3 | 29.98 | 81 | 69 | 67 | 60 | 6 | 10.0 | FEW027 | |
| TJNR | 23/1953 | 1015.3 | 29.98 | 80 | 71 | 74 | 40 | 8 | 10.0 | FEW023 | SCT028 |
| TJNR | 23/1853 | 1015.3 | 29.98 | 82 | 70 | 67 | 60 | 8 | 10.0 | FEW070 | |

1742 Atlantic standard time (coordinated universal time - 4 hours)

Observations for CHRISTIANSTED ALEXA, Virgin Islands (TISX)

Location: 17.70N 64.80W 17 meters

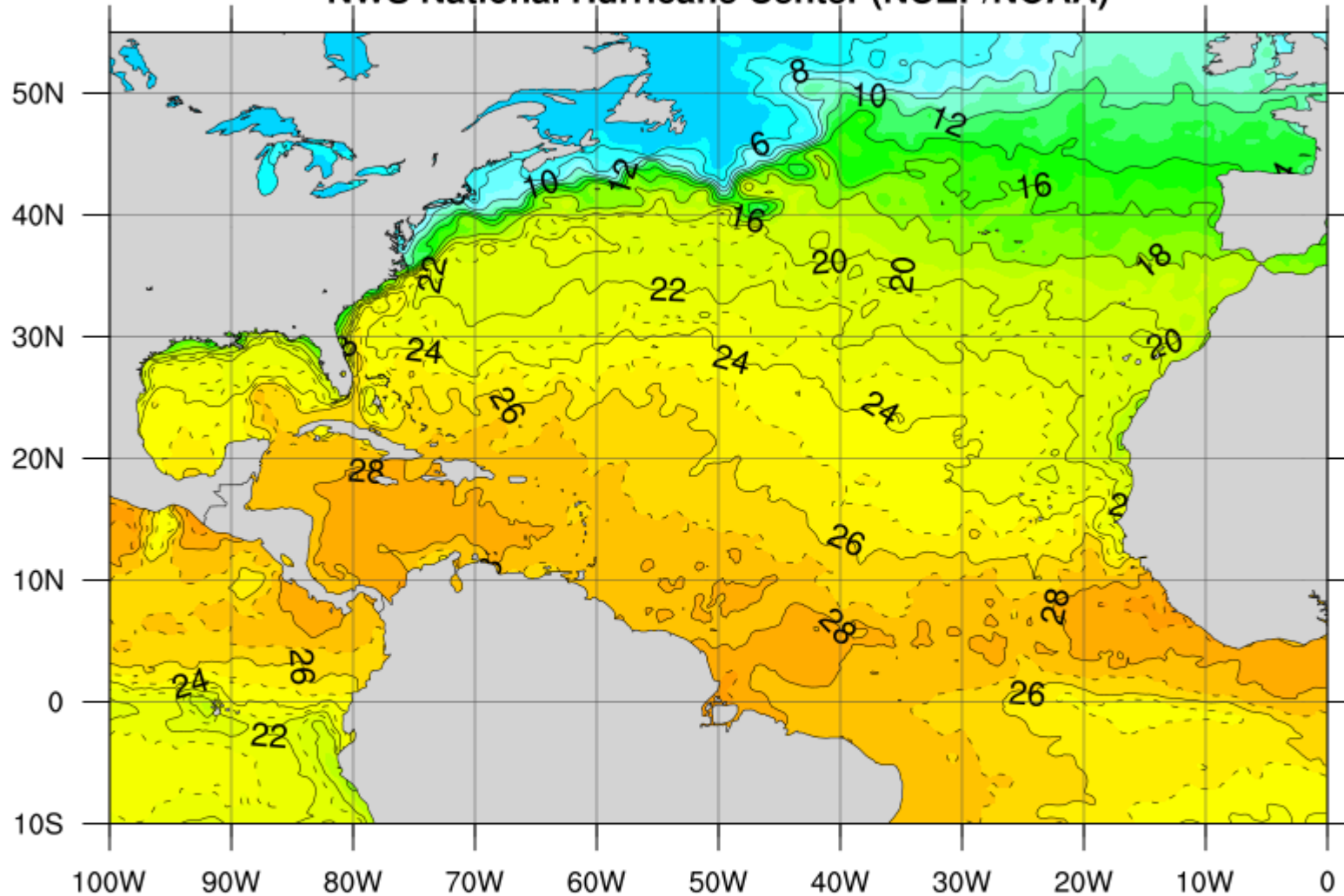
1742 Atlantic standard time (coordinated universal time – 4 hours)

1846Z 23 Dec 2020 to 1953Z 24 Dec 2020

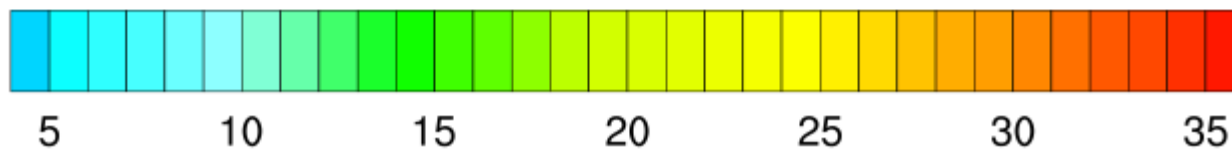
| STN | TIME | PMSL | ALTM | TMP | DEW | RH | DIR | SPD | GUS | PEAK | VIS | CLOUDS | Weather | MIN | MAX | P01 | PCP |
|------|---------|--------|-------|-----|-----|----|-----|-----|-----|-------|------|----------------------|---------|-----|-----|------|------|
| | DD/HHMM | hPa | inHg | F | F | % | deg | kt | kt | ddfff | mile | | | F | F | in | in |
| TISX | 24/1953 | 1013.7 | 29.94 | 76 | 74 | 94 | 50 | 9 | | | 10.0 | FEW021 SCT037 SCT044 | | | | 0.11 | |
| TISX | 24/1909 | | 29.95 | 73 | 72 | 94 | 100 | 8 | | | 3.0 | BKN043 OVC055 | RA FG | | | | |
| TISX | 24/1853 | 1014.3 | 29.96 | 73 | 71 | 94 | 70 | 15 | | 9030 | 2.0 | FEW030 BKN037 OVC060 | +RA FG | | | 0.08 | |
| TISX | 24/1753 | 1014.1 | 29.95 | 80 | 75 | 85 | 100 | 16 | 22 | 10028 | 10.0 | BKN030 BKN050 | | 76 | 83 | 0.05 | 0.05 |
| TISX | 24/1653 | 1015.2 | 29.99 | 80 | 72 | 76 | 50 | 12 | 21 | | 10.0 | BKN030 BKN050 | | | | 0.00 | |
| TISX | 24/1553 | 1016.6 | 30.03 | 78 | 73 | 85 | 50 | 11 | | 9033 | 9.0 | FEW041 BKN049 OVC065 | -RA | | | 0.00 | |
| TISX | 24/1453 | 1016.8 | 30.03 | 81 | 71 | 72 | 80 | 20 | 25 | | 10.0 | SCT030 BKN037 BKN110 | | | | 0.00 | 0.00 |
| TISX | 24/1353 | 1017.5 | 30.05 | 76 | 73 | 91 | 110 | 13 | | | 6.0 | FEW023 SCT033 BKN050 | -RA FG | | | 0.00 | |
| TISX | 24/1253 | 1017.0 | 30.04 | 78 | 69 | 74 | 70 | 16 | | | 10.0 | SCT038 OVC100 | | | | | |
| TISX | 24/1153 | 1016.2 | 30.01 | 76 | 70 | 82 | 60 | 13 | | | 10.0 | FEW028 BKN065 | | 73 | 78 | | 0.06 |
| TISX | 24/1053 | 1015.5 | 29.99 | 73 | 70 | 90 | 50 | 11 | 18 | | 10.0 | FEW049 OVC060 | | | | 0.05 | |
| TISX | 24/0953 | 1015.0 | 29.98 | 74 | 70 | 87 | 50 | 10 | | | 10.0 | SCT030 BKN040 OVC110 | -RA | | | 0.01 | |
| TISX | 24/0853 | 1014.8 | 29.97 | 73 | 68 | 84 | 50 | 7 | | 8026 | 10.0 | BKN060 OVC080 | | | | 0.00 | 0.00 |
| TISX | 24/0753 | 1014.2 | 29.96 | 77 | 69 | 77 | 60 | 9 | | | 10.0 | FEW031 SCT095 BKN120 | | | | | |
| TISX | 24/0653 | 1014.6 | 29.97 | 77 | 70 | 79 | 60 | 12 | | | 10.0 | FEW028 OVC100 | | | | | |
| TISX | 24/0553 | 1015.2 | 29.98 | 76 | 70 | 82 | 60 | 10 | | | 10.0 | CLR | | 74 | 78 | | 0.00 |
| TISX | 24/0453 | 1015.9 | 30.01 | 76 | 71 | 85 | 60 | 9 | | | 10.0 | CLR | | | | | |
| TISX | 24/0353 | 1016.1 | 30.01 | 76 | 71 | 85 | 60 | 10 | | | 10.0 | CLR | | | | 0.00 | |
| TISX | 24/0253 | 1016.4 | 30.02 | 77 | 71 | 82 | 70 | 13 | | | 10.0 | FEW026 FEW080 | | | | 0.00 | 0.00 |
| TISX | 24/0153 | 1016.4 | 30.02 | 78 | 72 | 81 | 60 | 10 | | | 10.0 | CLR | | | | | |
| TISX | 24/0053 | 1016.2 | 30.01 | 76 | 72 | 88 | 60 | 8 | | | 10.0 | SCT025 | | | | | |
| TISX | 23/2353 | 1015.7 | 30.00 | 76 | 72 | 88 | 60 | 8 | | | 10.0 | SCT022 | | 75 | 84 | | 0.00 |
| TISX | 23/2253 | 1015.0 | 29.98 | 76 | 72 | 88 | 50 | 6 | | | 10.0 | SCT022 | | | | | |
| TISX | 23/2153 | 1014.9 | 29.98 | 76 | 72 | 88 | 60 | 8 | | | 10.0 | SCT025 | | | | | |
| TISX | 23/2053 | 1014.6 | 29.97 | 78 | 73 | 85 | 60 | 14 | 18 | | 10.0 | SCT026 SCT042 | | | | 0.00 | 0.00 |
| TISX | 23/1953 | 1014.4 | 29.96 | 80 | 71 | 74 | 60 | 12 | | | 10.0 | FEW027 SCT042 BKN050 | | | | | |
| TISX | 23/1846 | | 29.96 | 81 | 71 | 72 | 50 | 11 | | | 10.0 | BKN035 | | | | | |



NWS National Hurricane Center (NCEP/NOAA)



Ocean Analysis - Reynolds Daily Sea Surface Temperature (C) - valid: 2020 - 12 - 24



Data Source: National Climatic Data Center (NCDC/NOAA)



NexSat

NRL/JPSS Next-Generation Weather Satellite Demonstration Project

About NexSat



Feedback?

[NEXSAT Home](#)

[NorthAmerica-CONUS-East/PuertoRico](#)

[Pass_Predictor](#)

Check dates and times; we are experiencing processing issues.

[Latest](#) [Archive](#) [Small](#) [Large](#) [Single](#) [Multi](#) [Animate](#)

NorthAmerica-CONUS-East/true_color/viirs
20201224.174210.jpss.viirs.True-Color.PuertoRico.covg67p0.NASA.res0p38km.jpg 19:01:43 UTC

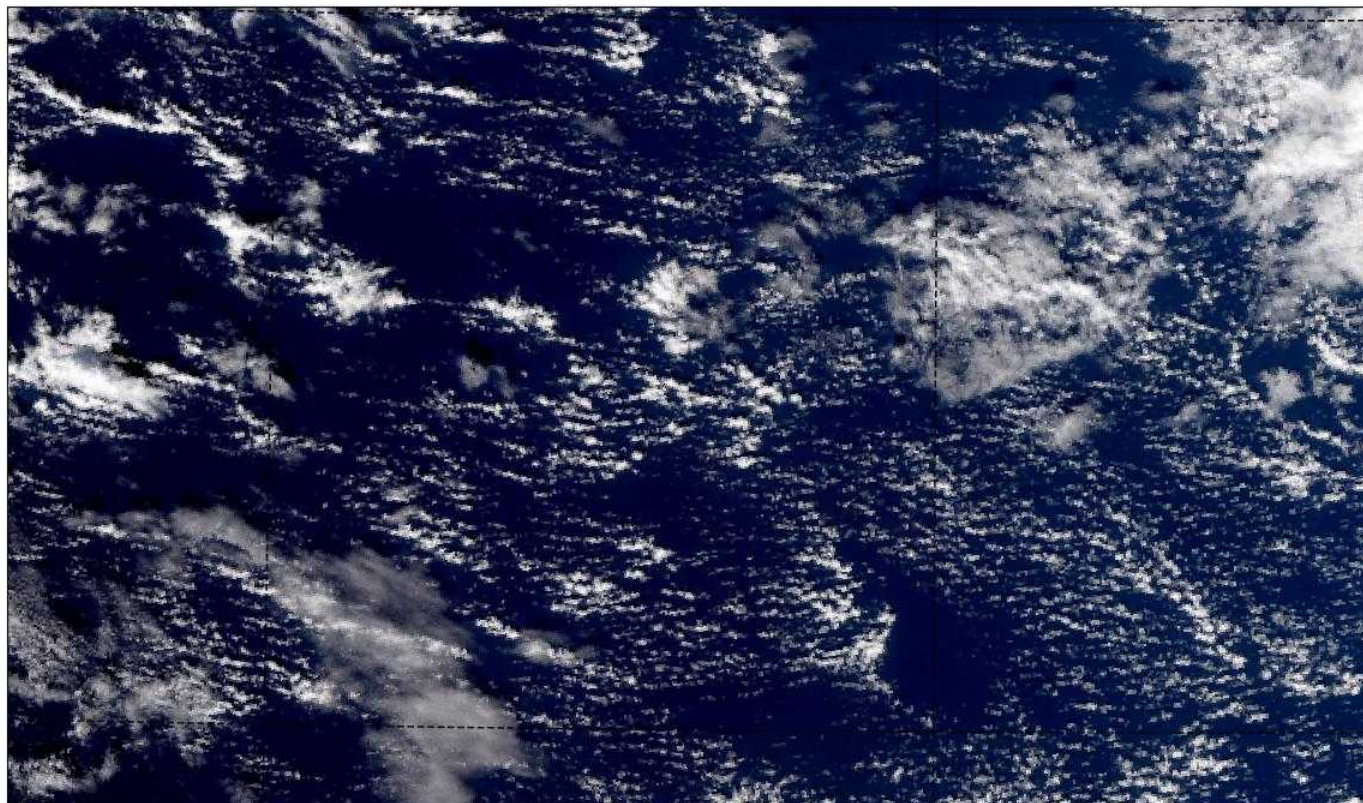
Products

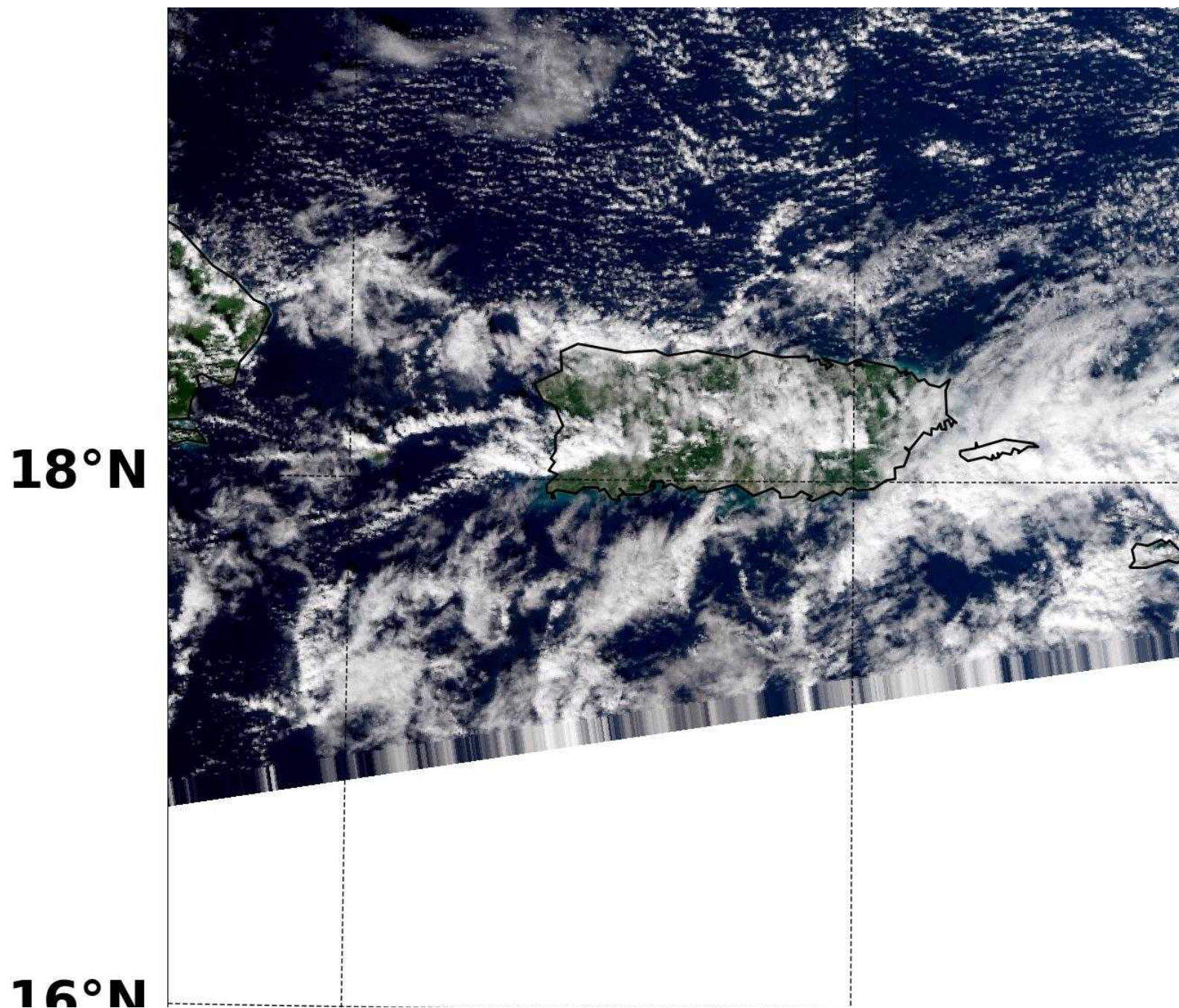
| |
|---------------------|
| Visible |
| Infrared |
| True Color |
| Rain Rates |
| Rain Totals |
| Cirrus-Cloud |
| Geocolor |
| Infrared-Hires |
| Lunar-Ref-IR |
| Lunar-Reflectance |
| Night-Visible |
| Nocturnal-Low-Cloud |
| Water-Vapor-6p2 |
| Water-Vapor-6p9 |
| Water-Vapor-7p3 |
| Winds |
| Aerosol |
| Day Natural Color |
| Dust |
| LowCloud |
| Night Vis + IR |

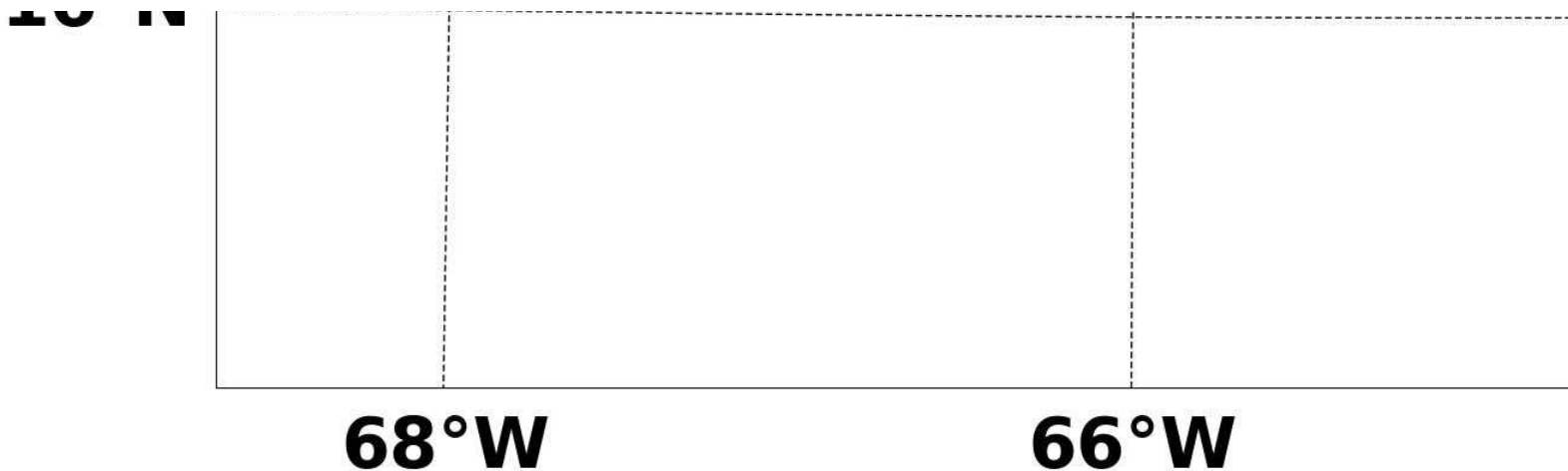
JPSS VIIRS True Color 2020/12/24 17:42:10 66°W

68°W

20°N







[NRL_Home](#) | [Sat_Home](#) | [COMET](#)

NEXSAT: 4.17.05 (Released: 12/10/20)
Page Generated: Tue Dec 29 19:01 2020 GMT
Approved for public release by: Superintendent NRL Monterey
Technical POC: **NEXSAT Lead**
Webmaster: **contact**

Acknowledgement: Technical collaboration with the [Cooperative Institute for Research in the Atmosphere](#) 
Products on this page powered by [GeoIPS™](#)

If you use images and products from this site, we would appreciate appropriate acknowledgment and would like to [hear](#) how you are using them, thank you.

The appearance of external hyperlinks does not constitute endorsement by the United States Department of Defense, the United States Department of the Navy and The Naval Research Laboratory Marine Meteorology Division of the linked web sites, or the information, products or services contained therein. The United States Department of Defense, the Department of the Navy and The Naval Research Laboratory does not exercise any editorial control over the information you may find at these locations. Such links are provided consistent with the stated purpose of this DoD web site. Please see complete notice and disclaimer [here](#).

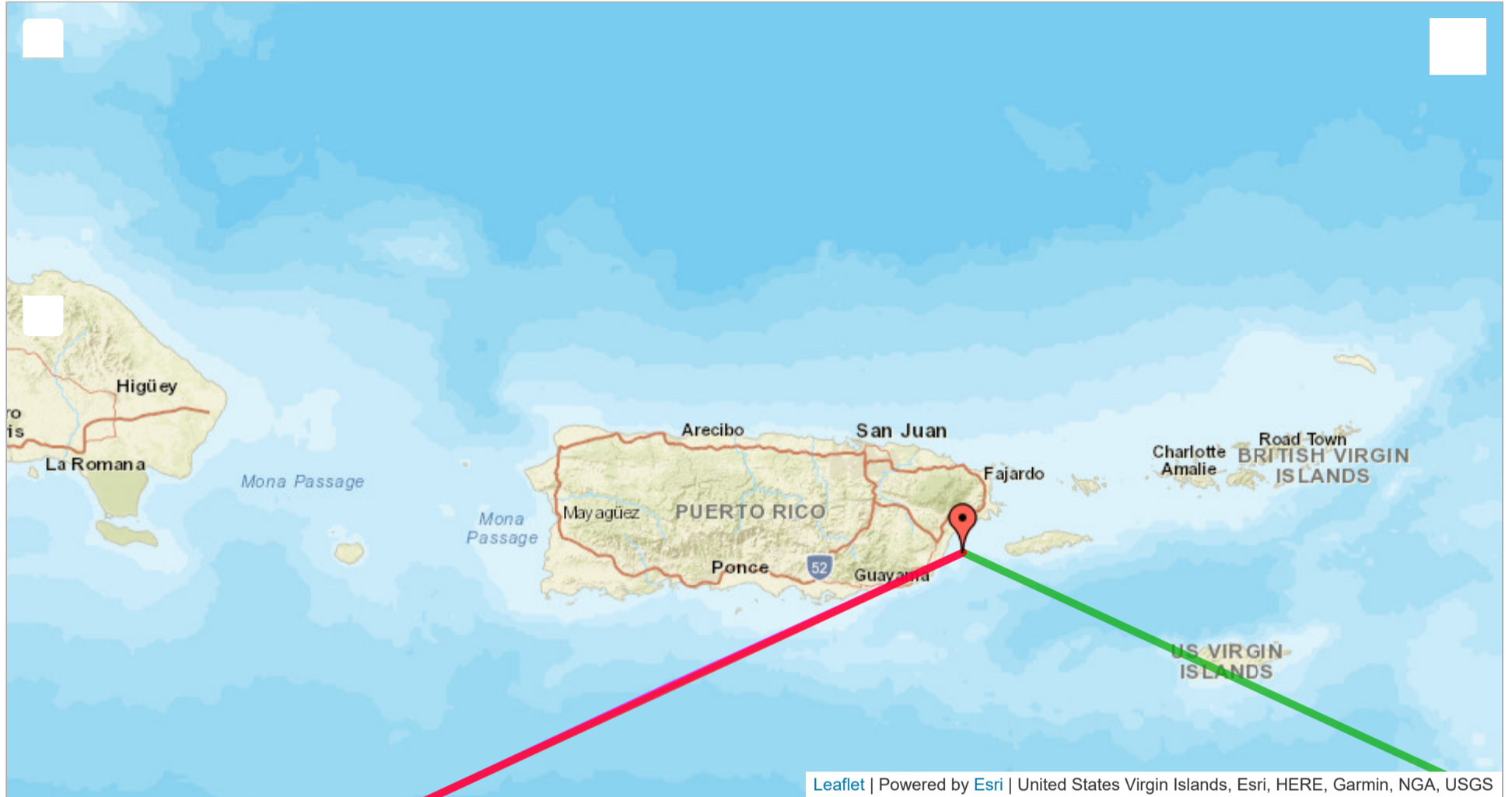


NOAA Solar Calculator

Find Sunrise, Sunset, Solar Noon and Solar Position for Any Place on Earth

Show: World Cities U.S. Cities GML Observatories GML Data Sites SurfRad & Solrad

Move the large red pin to the desired location and enter the date and time at which to calculate the sun position.



Location:

Latitude: Longitude: Time Zone:

UTC Offset:

Date:

Day: Month: Year:

Local Time: : : PM

Result

| | | |
|---|--|---|
| Equation of Time <input type="text" value="-0.01"/> (minutes): | Solar Declination <input type="text" value="-23.39"/> (in°): | Solar Noon <input type="text" value="12:22:48"/> (hh:mm:ss): |
| Apparent Sunrise <input type="text" value="06:51"/> (hh:mm): | Apparent Sunset <input type="text" value="17:54"/> (hh:mm): | Az/EI <input type="text" value="245.51"/> <input type="text" value="0.02"/> (in °) at Local Time: |
| <input checked="" type="checkbox"/> Show Sunrise <input type="text"/> | <input checked="" type="checkbox"/> Show Sunset <input type="text"/> | <input checked="" type="checkbox"/> Show Azimuth <input type="text"/> |