

Factual Report – Attachment 5

Screenshots of the Integrated Terminal Weather System Situation Display TRACON windows applicable for IAH for the time period surrounding the accident time (at five-minute intervals).

METEOROLOGY

DCA19MA086

*Submitted by: Mike Richards
NTSB, AS-30*

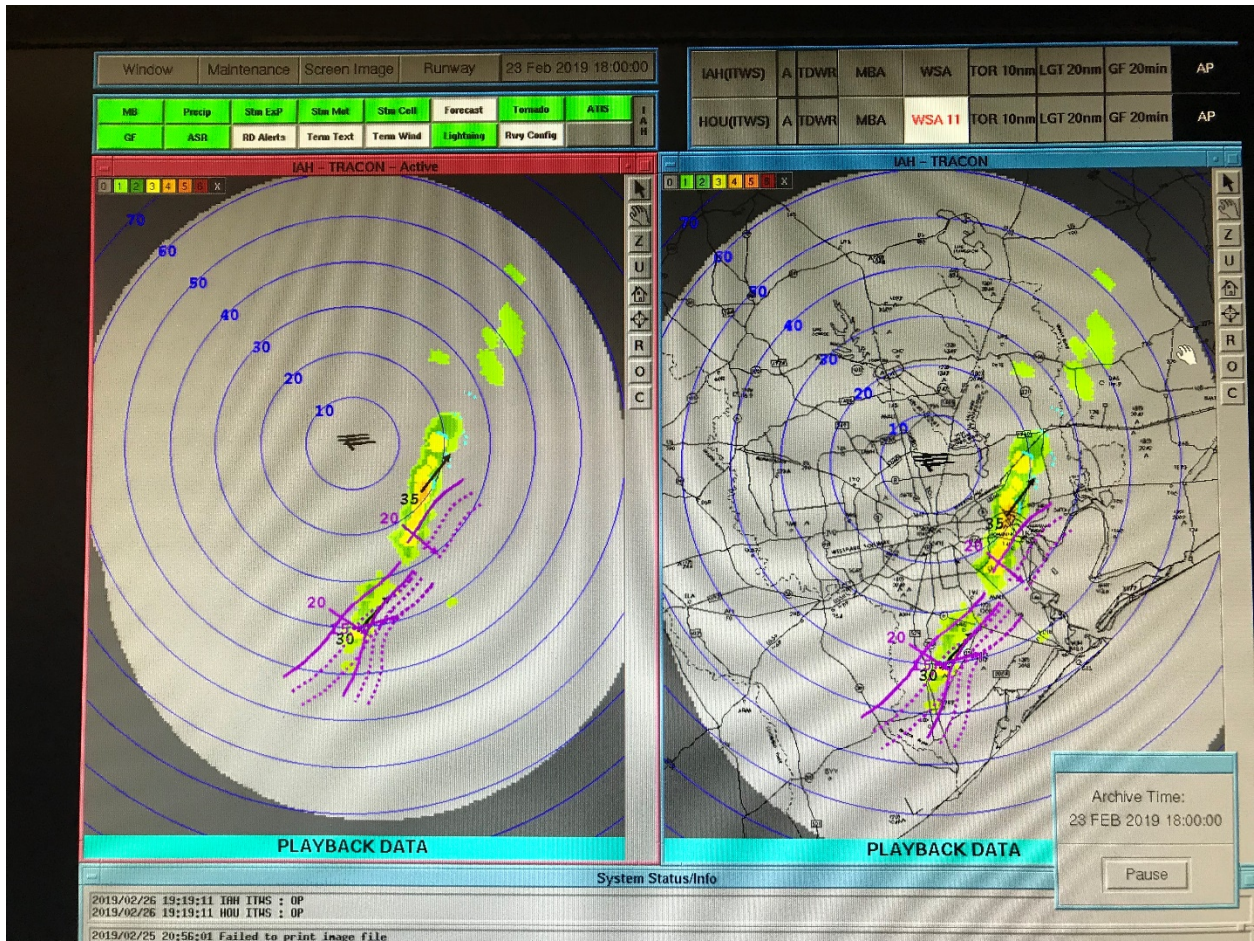


Figure A – Screenshot for the ITWS Situation Display TRACON windows (at two different zoom levels) applicable for IAH at 1200 CST.

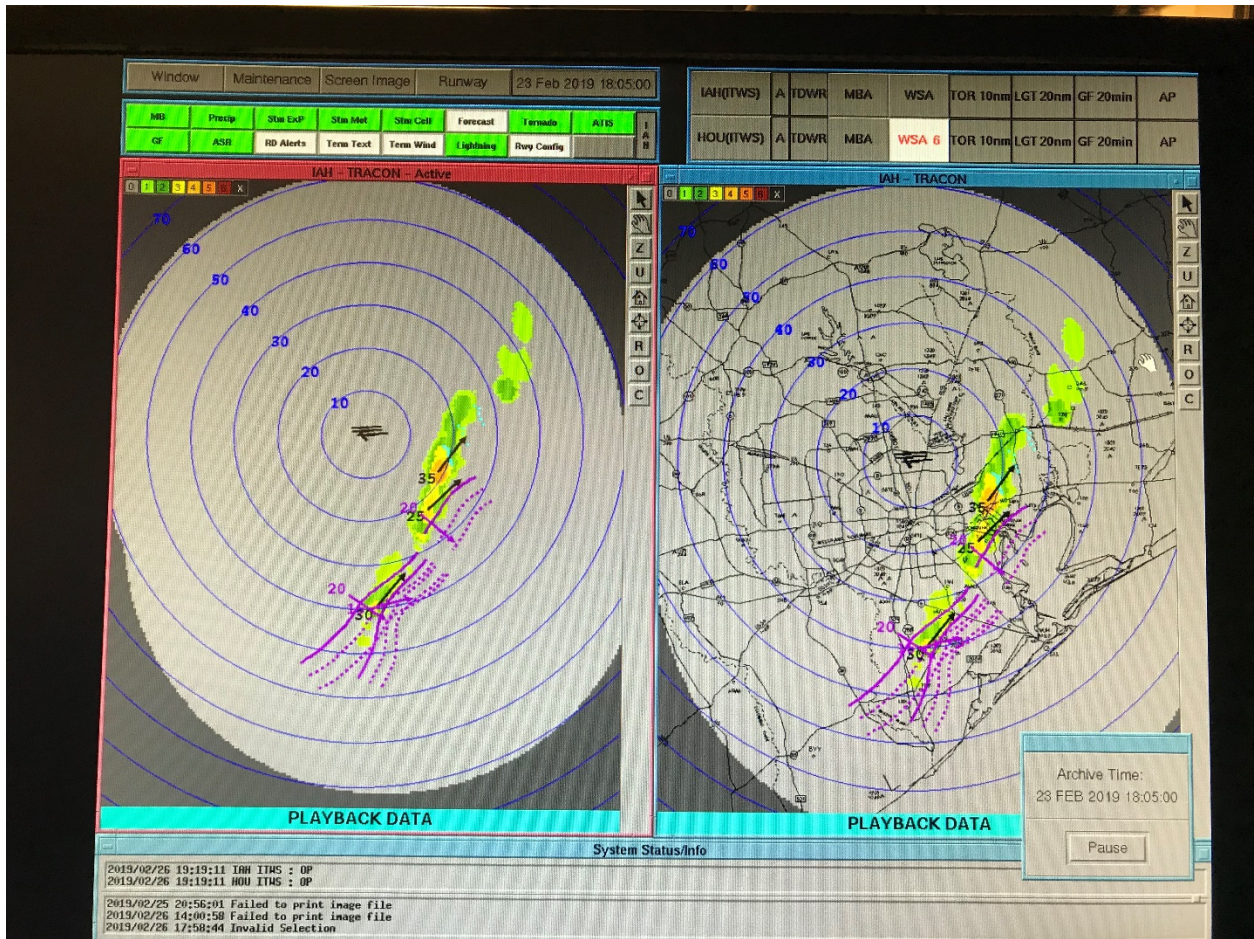


Figure B – Screenshot for the ITWS Situation Display TRACON windows (at two different zoom levels) applicable for IAH at 1205 CST.

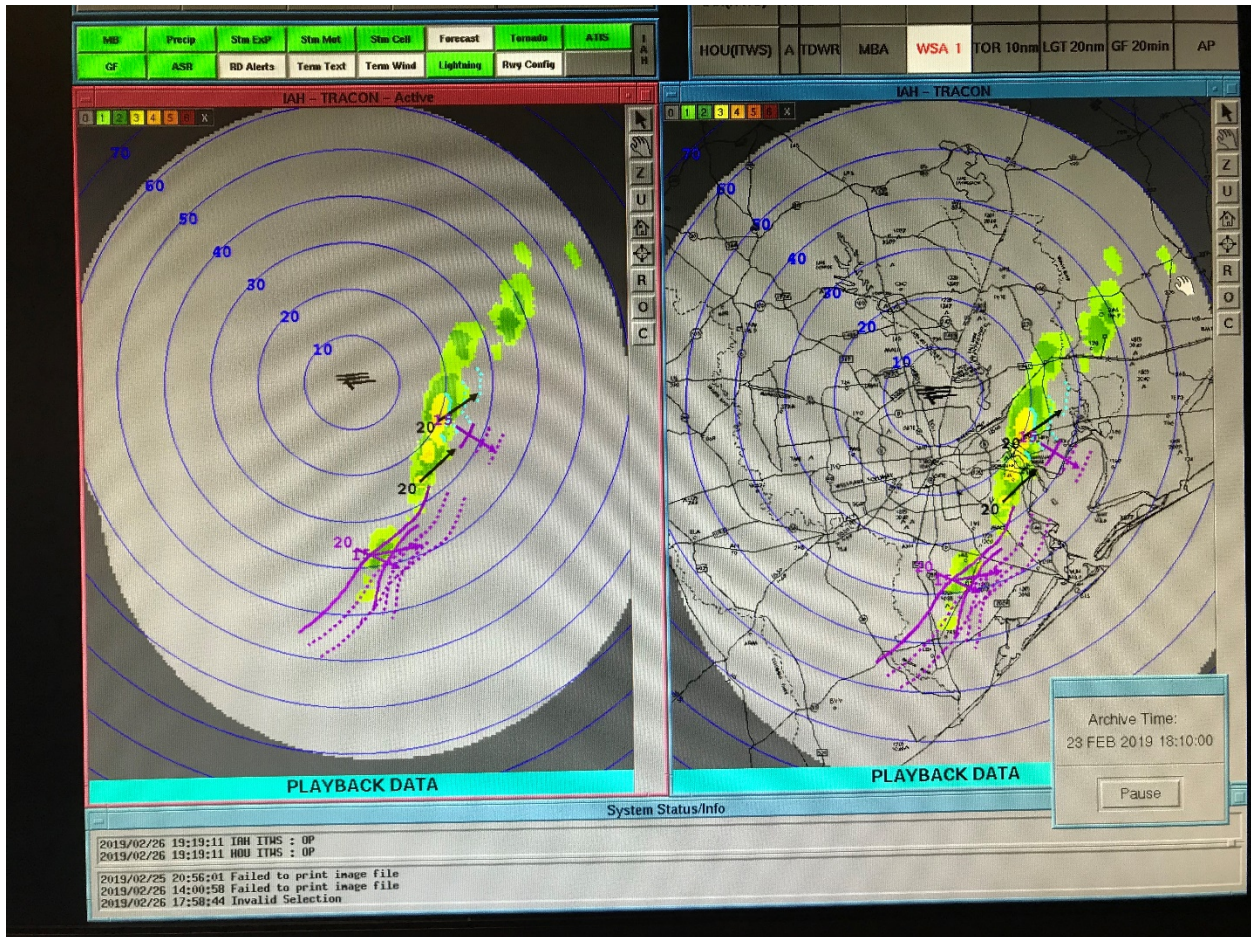


Figure C – Screenshot for the ITWS Situation Display TRACON windows (at two different zoom levels) applicable for IAH at 1210 CST.

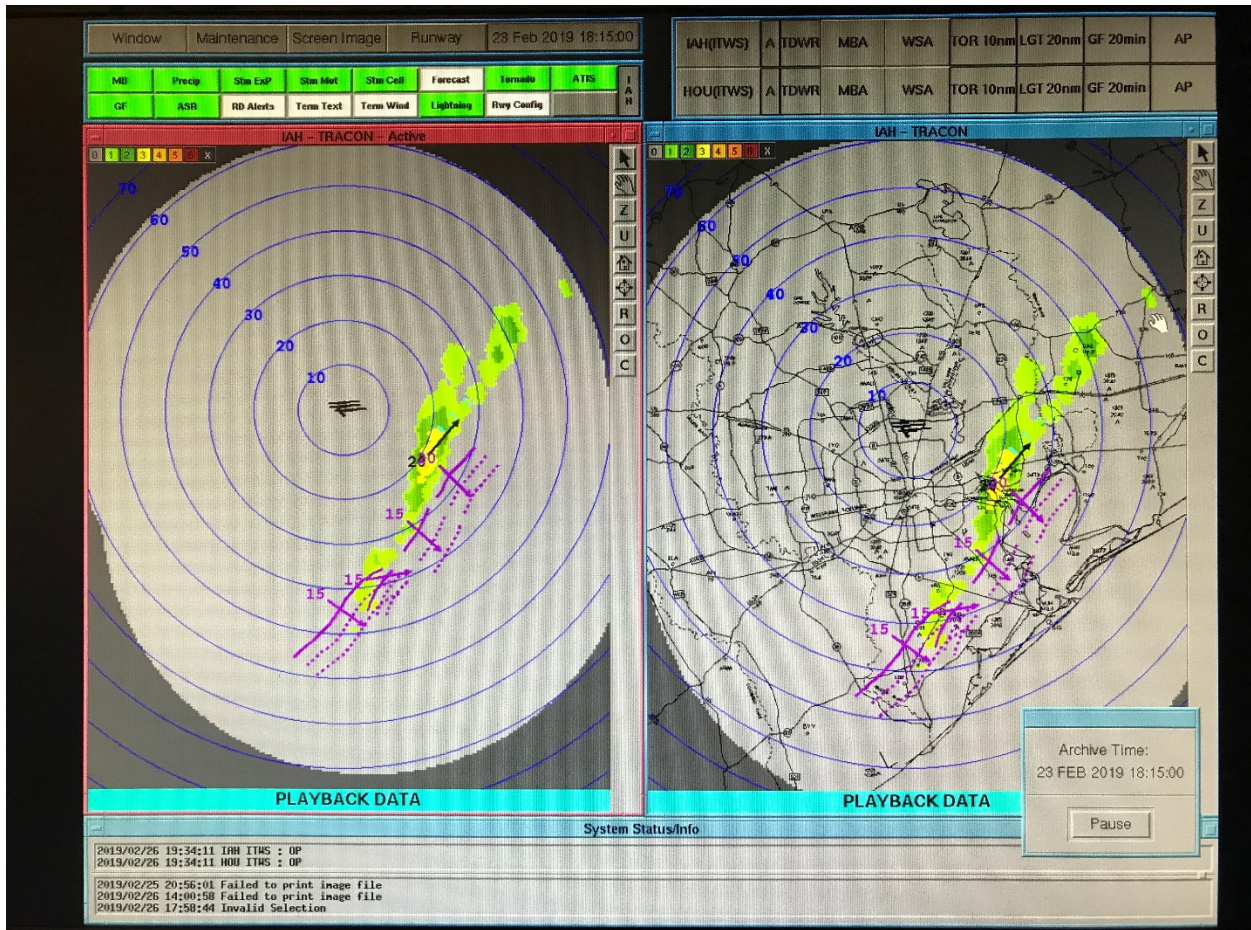


Figure D – Screenshot for the ITWS Situation Display TRACON windows (at two different zoom levels) applicable for IAH at 1215 CST.

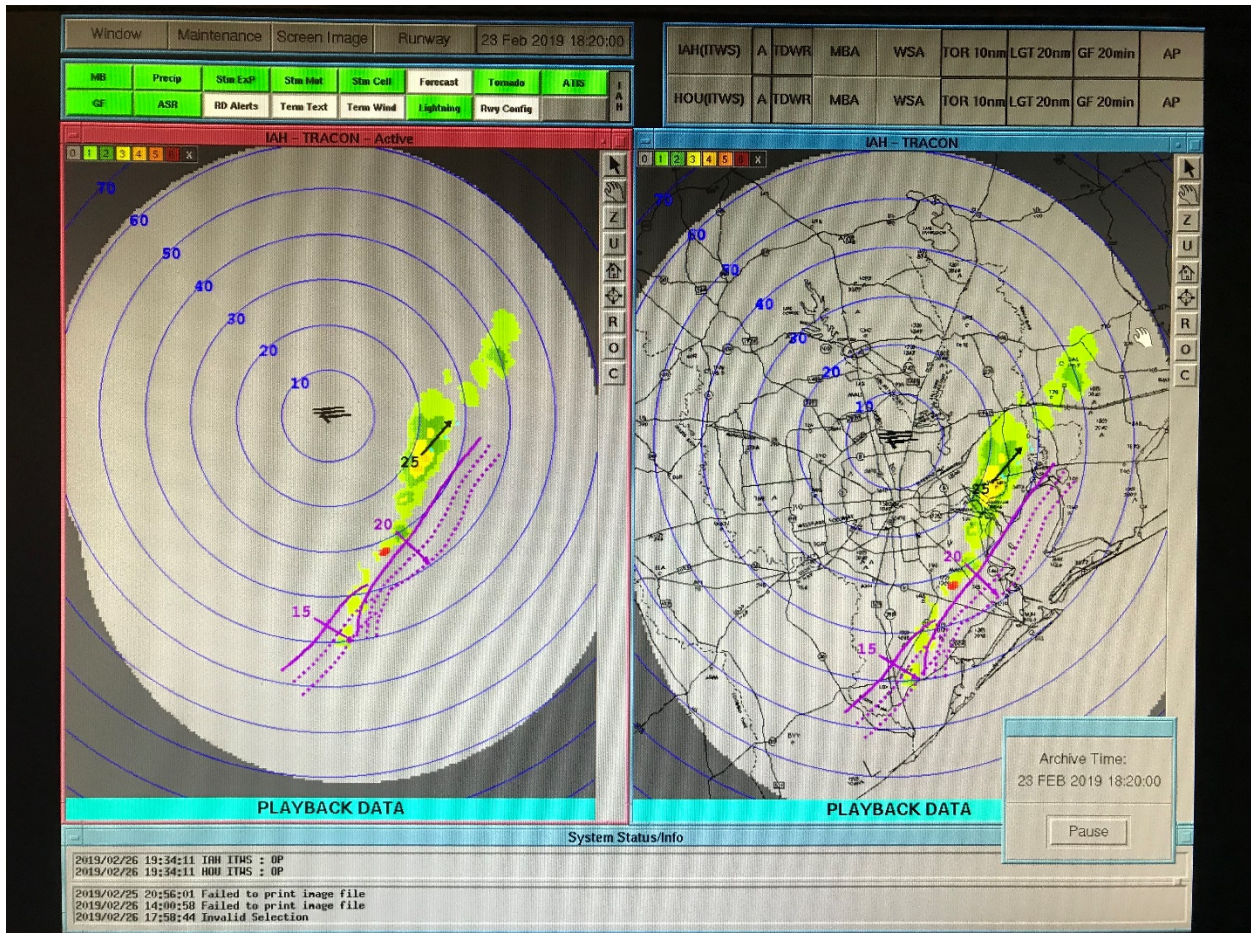


Figure E – Screenshot for the ITWS Situation Display TRACON windows (at two different zoom levels) applicable for IAH at 1220 CST.

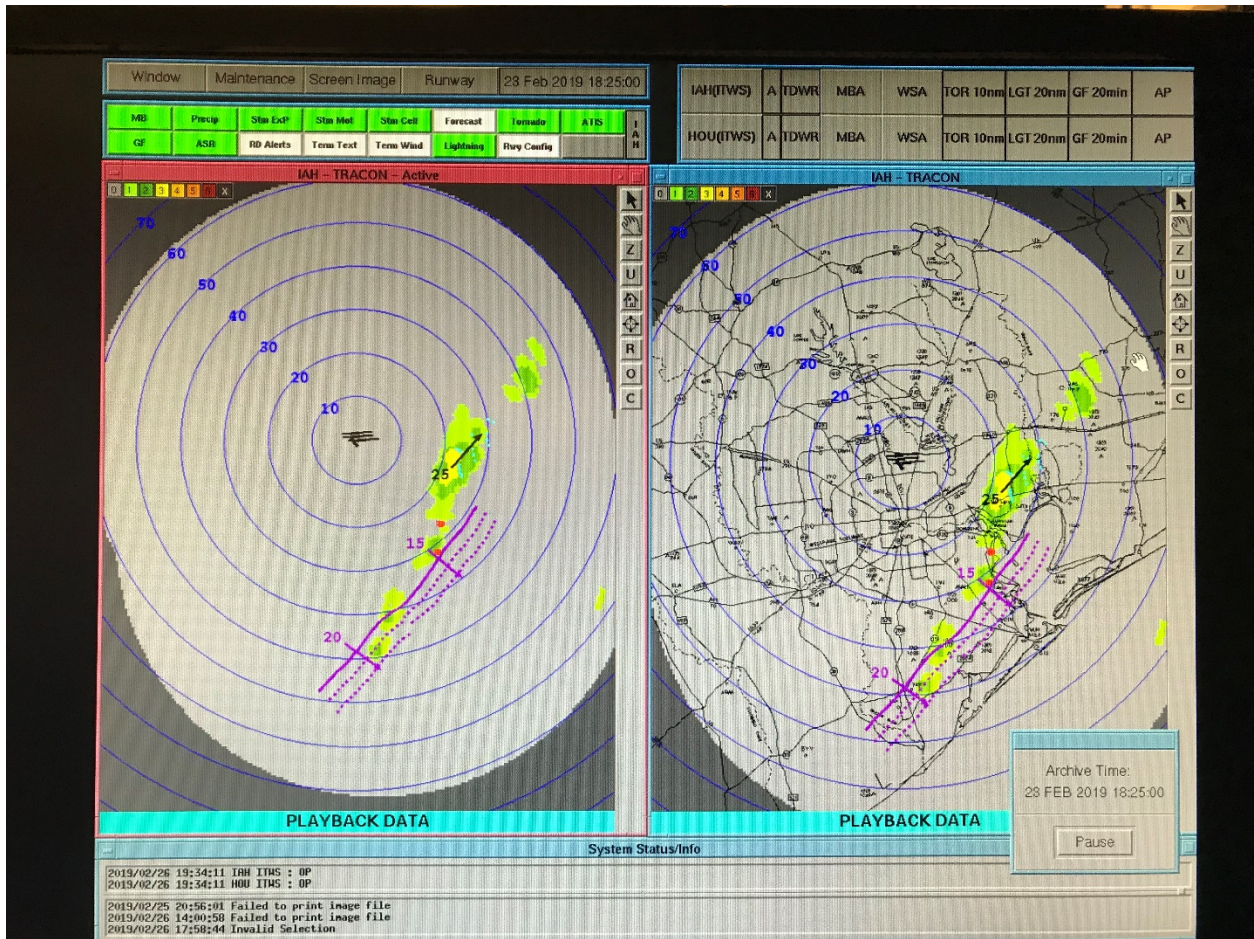


Figure F – Screenshot for the ITWS Situation Display TRACON windows (at two different zoom levels) applicable for IAH at 1225 CST.

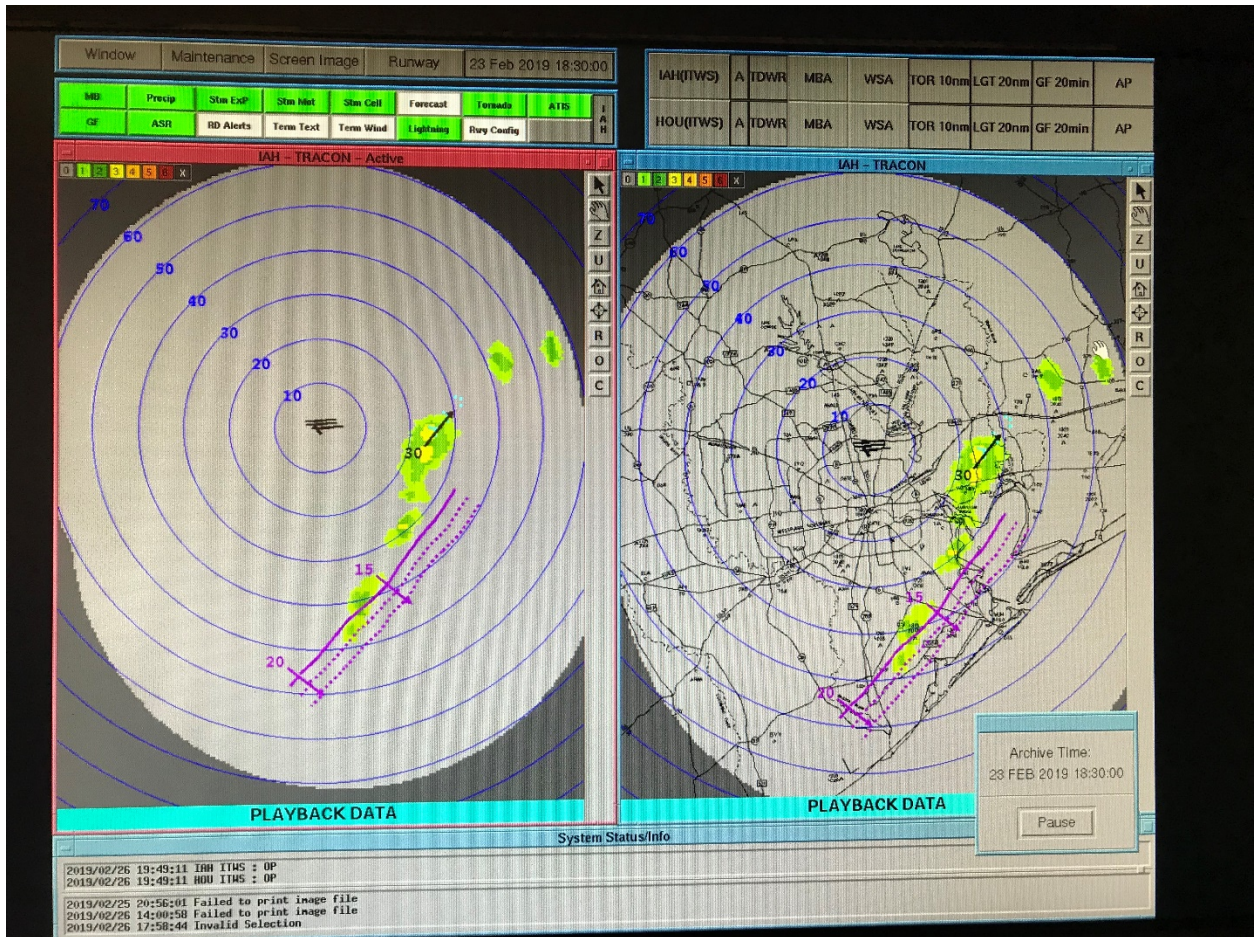


Figure G – Screenshot for the ITWS Situation Display TRACON windows (at two different zoom levels) applicable for IAH at 1230 CST.

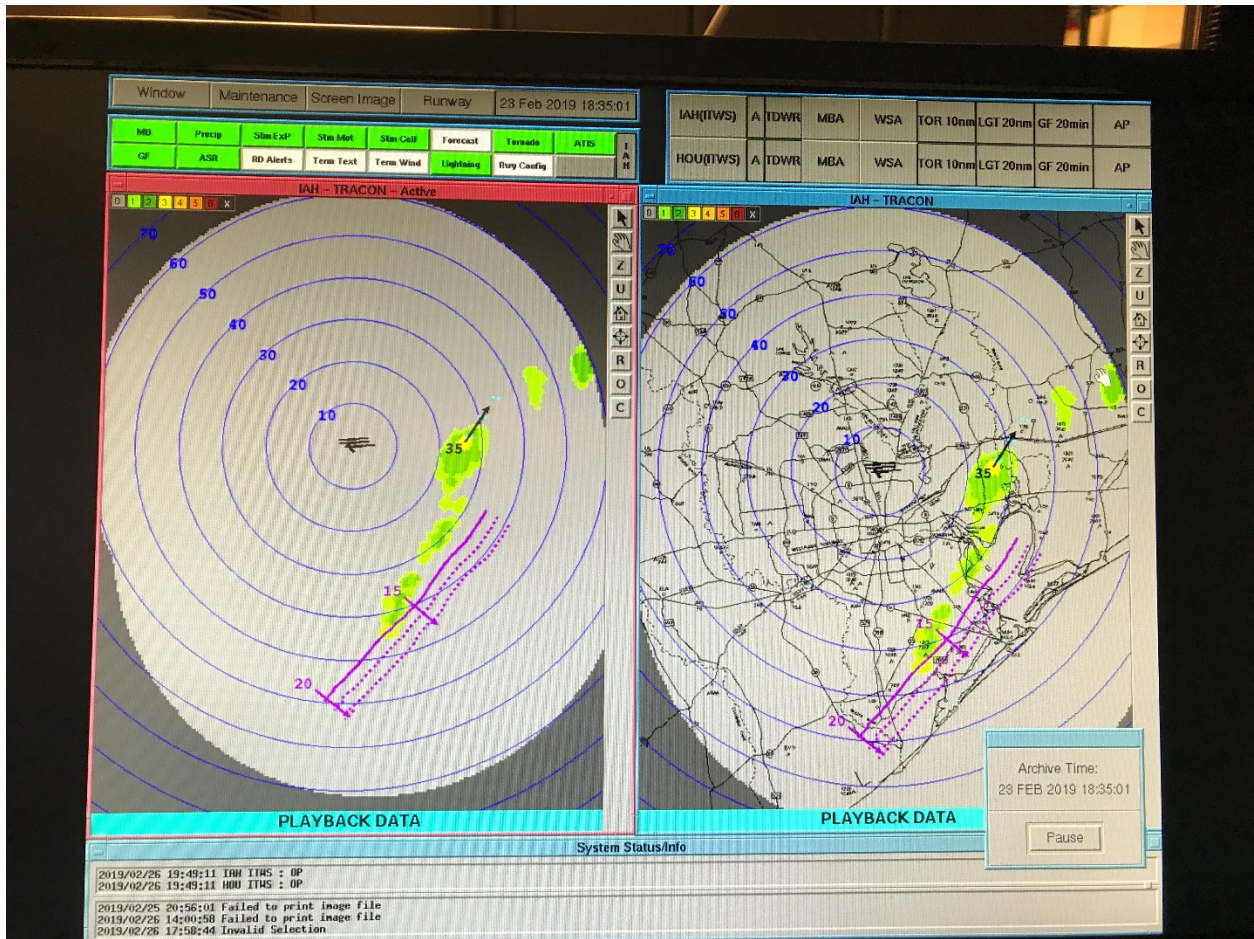


Figure H – Screenshot for the ITWS Situation Display TRACON windows (at two different zoom levels) applicable for IAH at 1235 CST.

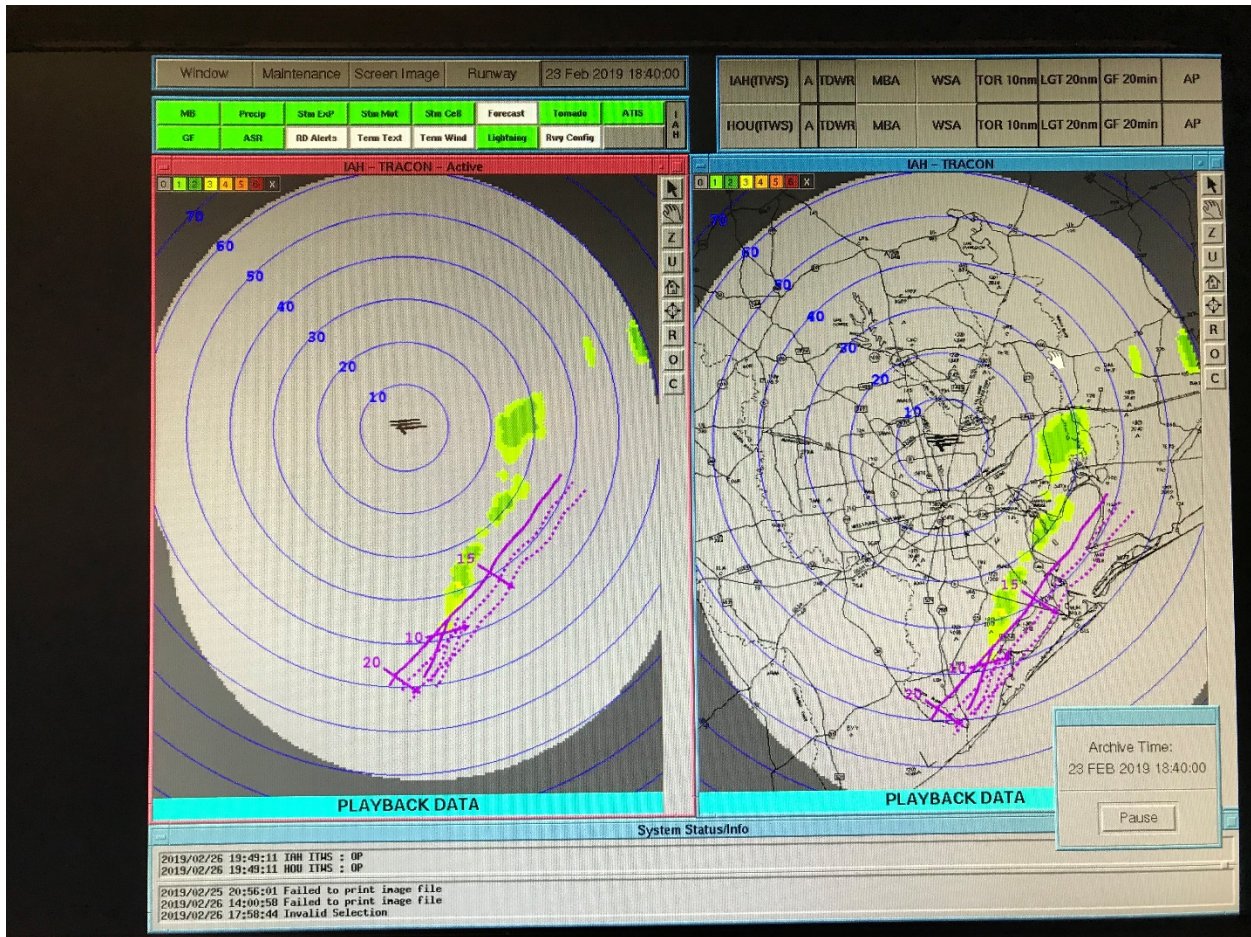


Figure I – Screenshot for the ITWS Situation Display TRACON windows (at two different zoom levels) applicable for IAH at 1240 CST.