

Factual Report – Attachment 3

GOES-16 visible imagery between 1127 and 1237 CST.

METEOROLOGY

DCA19MA086

*Submitted by: Mike Richards
NTSB, AS-30*

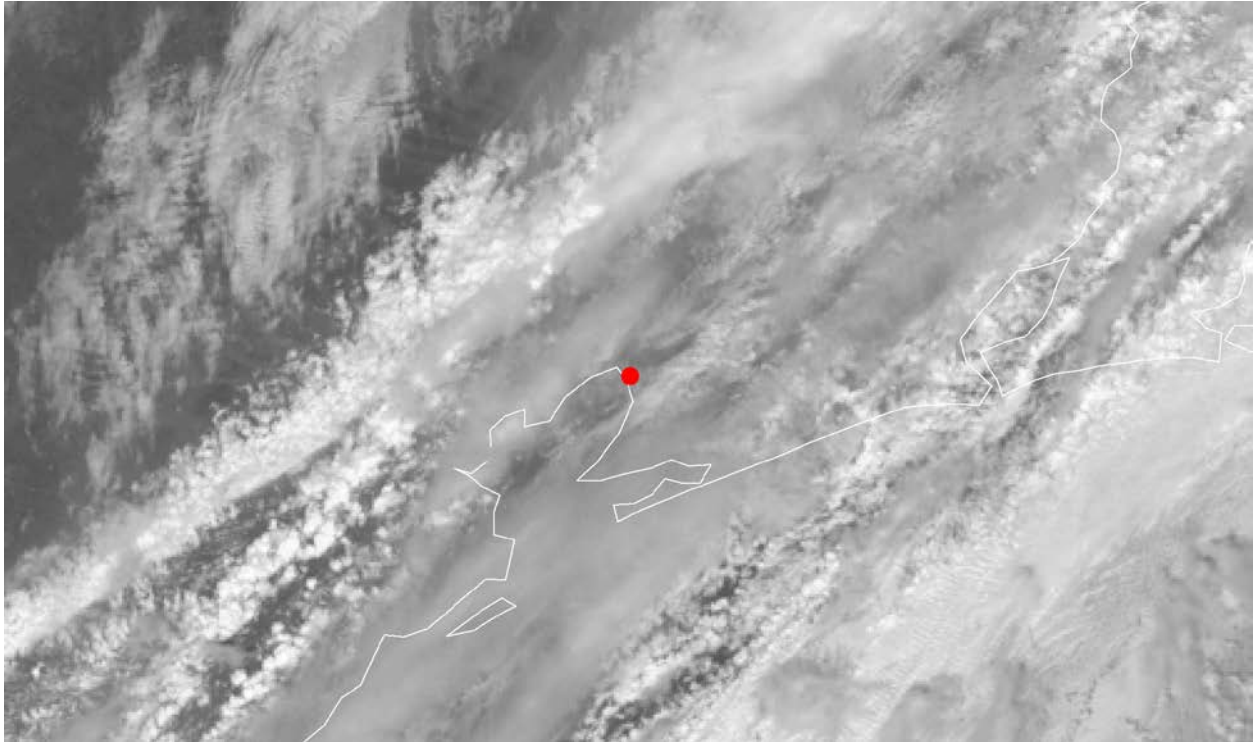


Figure A – GOES-16 visible image from 1127 CST. Red dot denotes accident location.

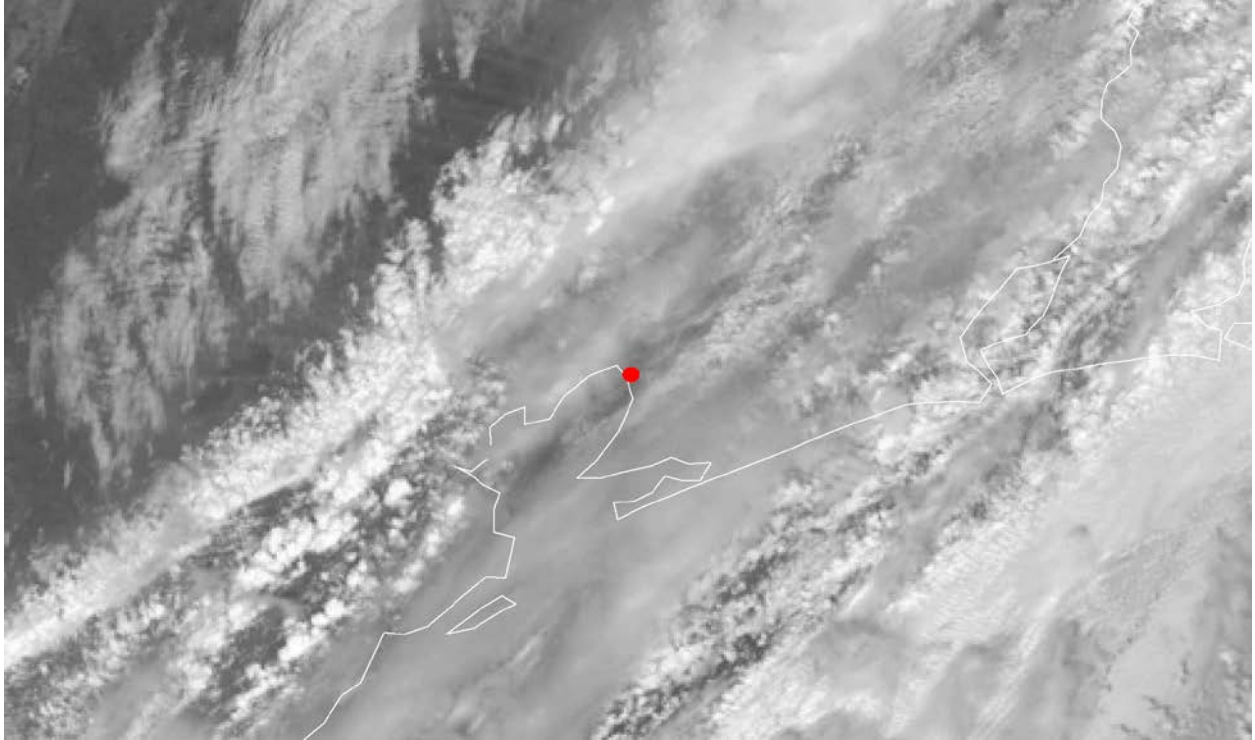


Figure B - GOES-16 visible image from 1132 CST. Red dot denotes accident location.

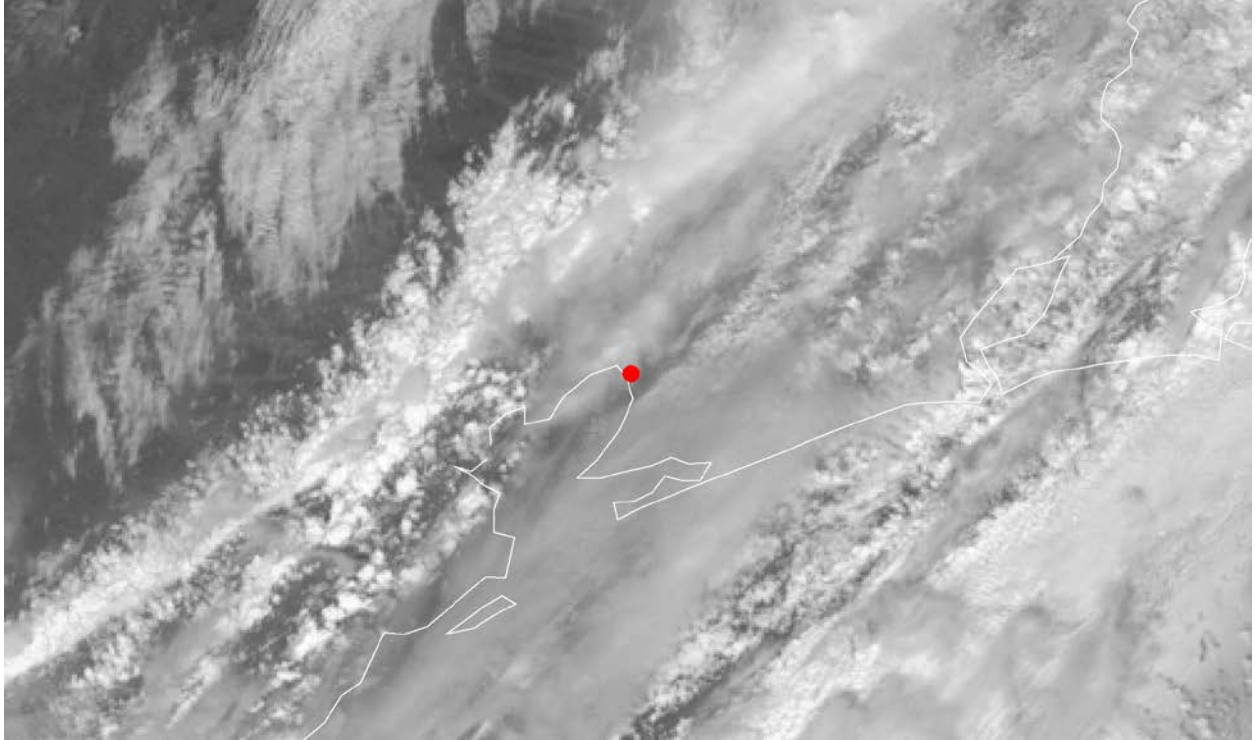


Figure C - GOES-16 visible image from 1137 CST. Red dot denotes accident location.

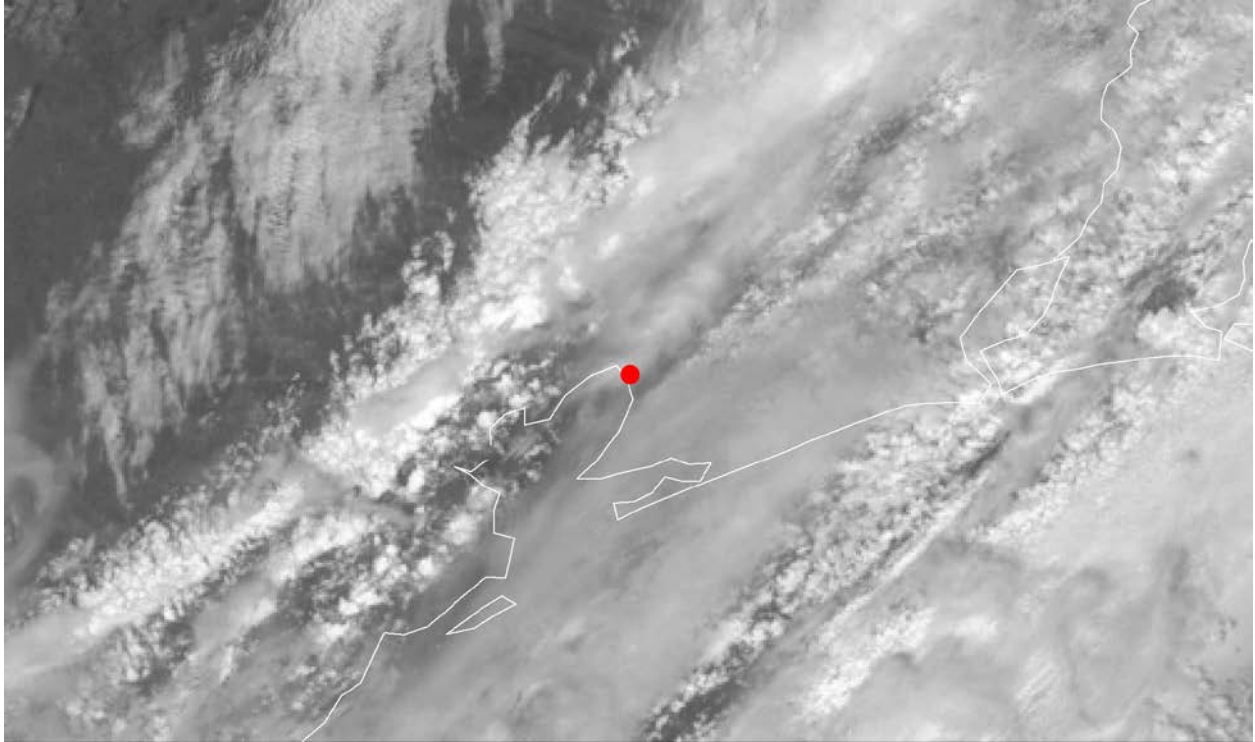


Figure D - GOES-16 visible image from 1142 CST. Red dot denotes accident location.

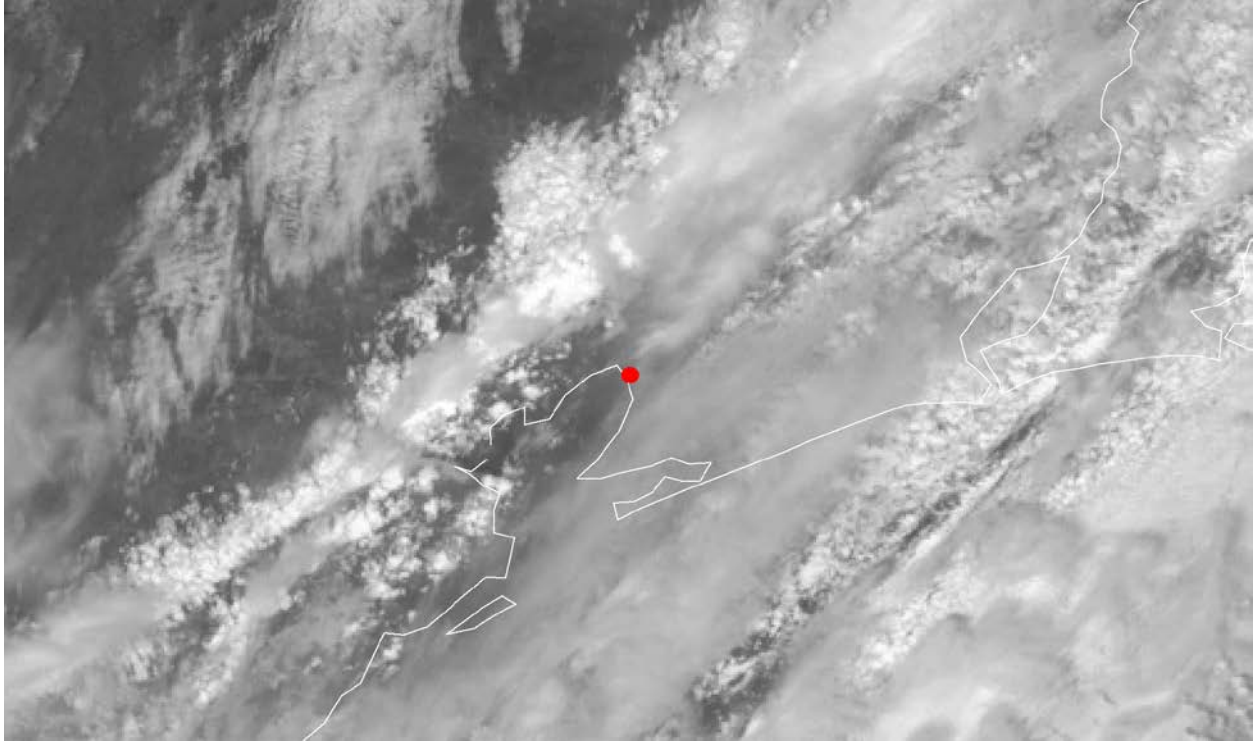


Figure E - GOES-16 visible image from 1147 CST. Red dot denotes accident location.

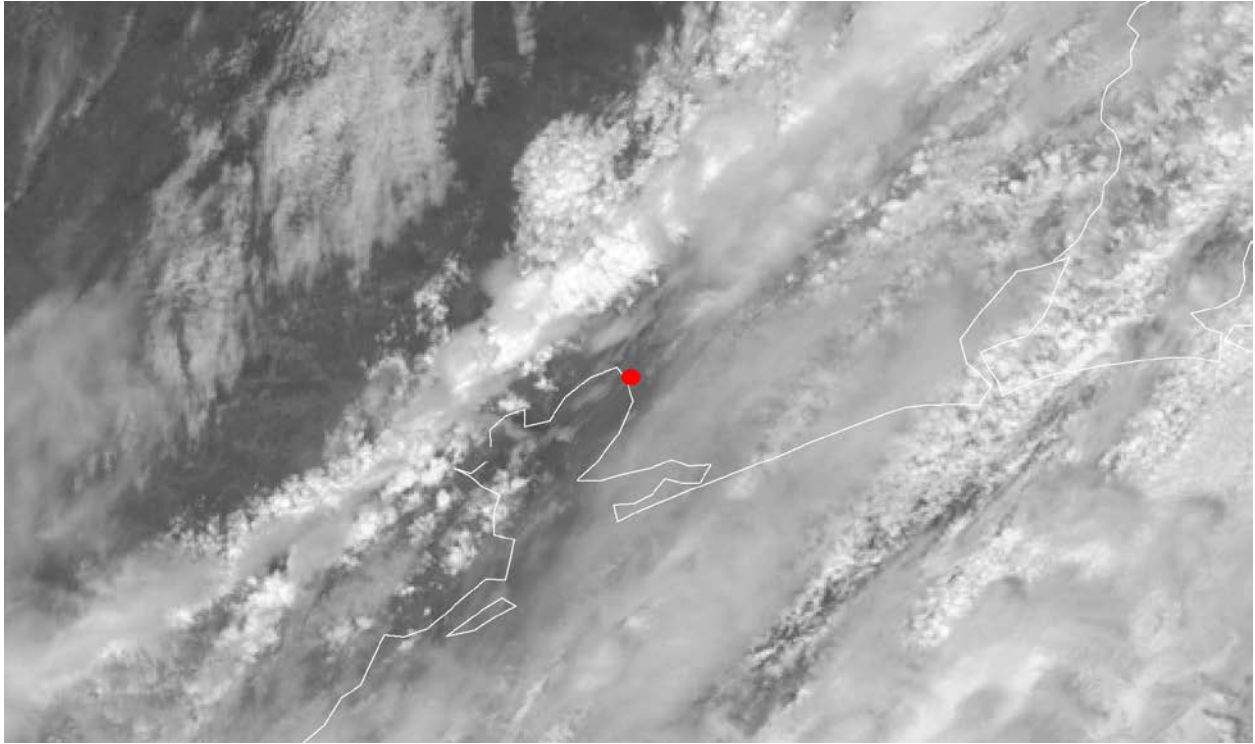


Figure F - GOES-16 visible image from 1152 CST. Red dot denotes accident location.

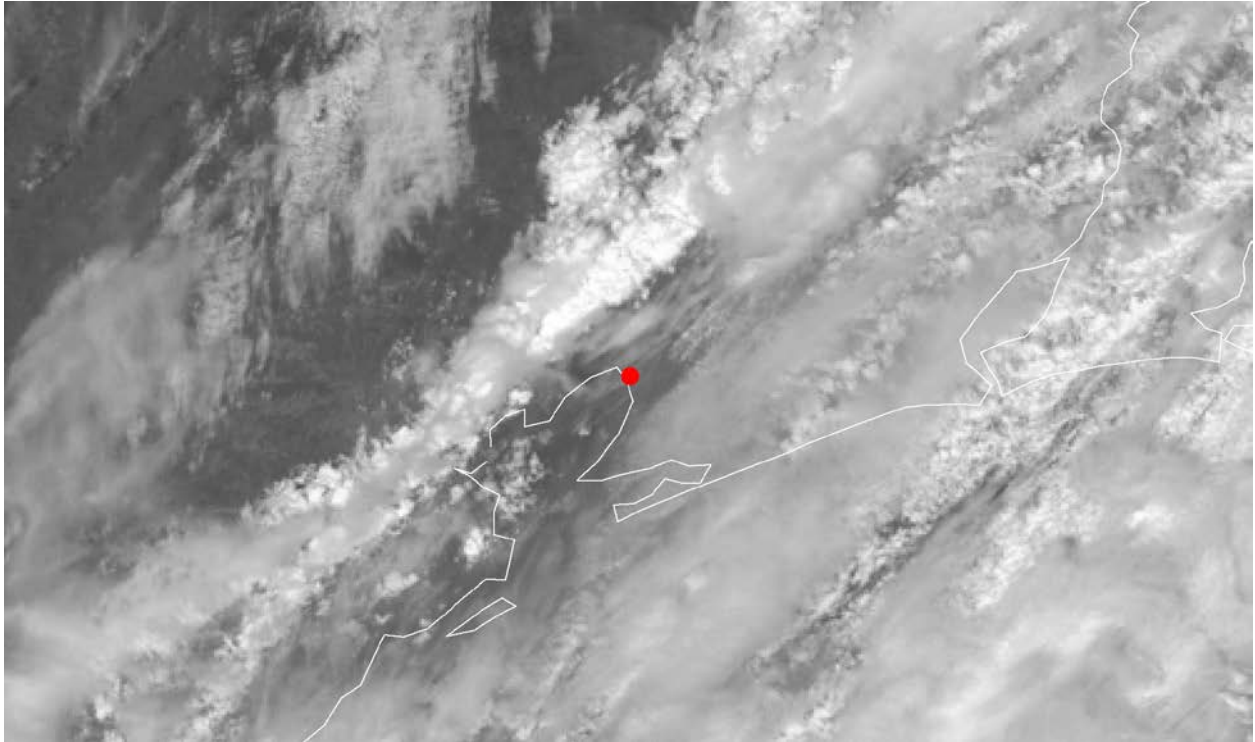


Figure G - GOES-16 visible image from 1157 CST. Red dot denotes accident location.

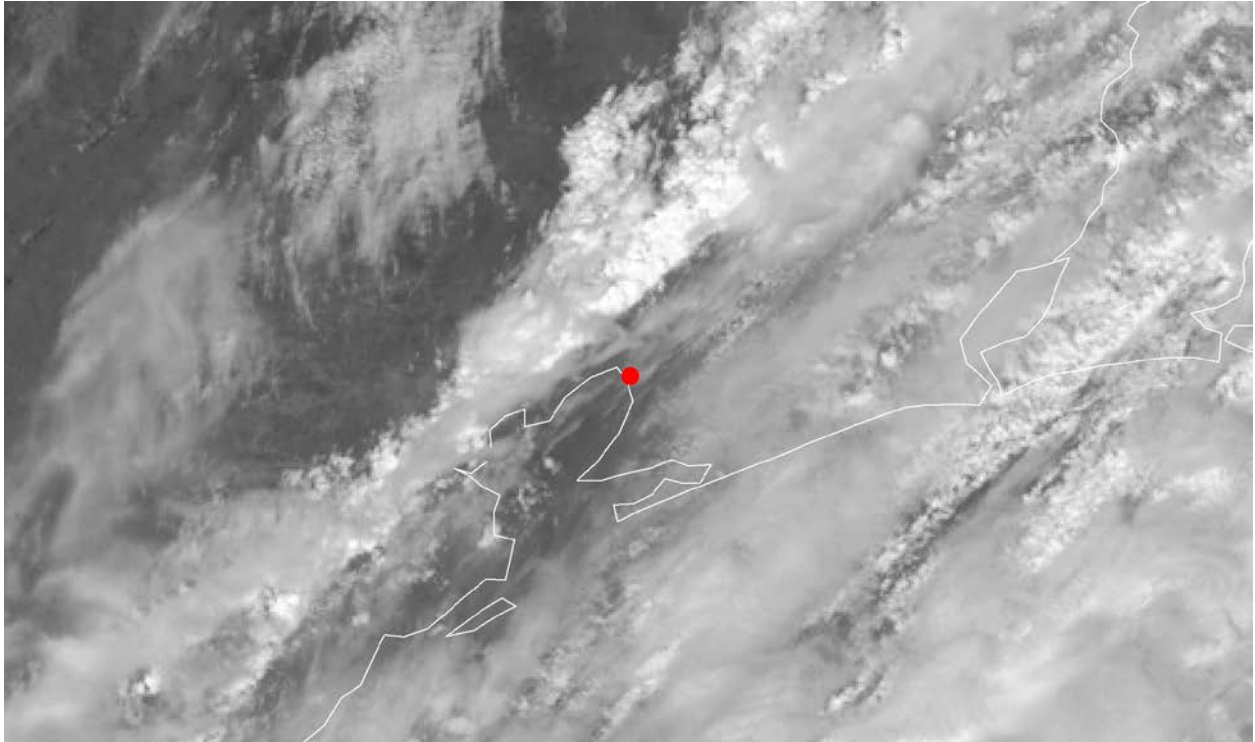


Figure H - GOES-16 visible image from 1202 CST. Red dot denotes accident location.

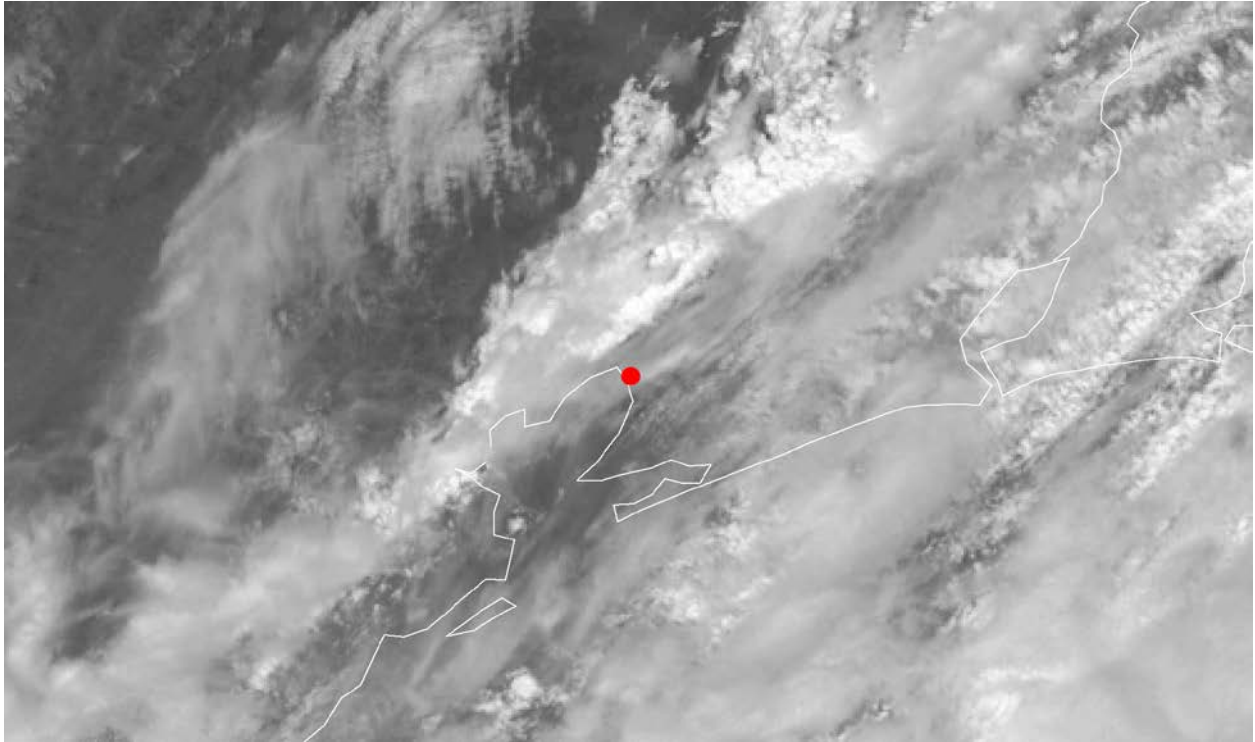


Figure I - GOES-16 visible image from 1207 CST. Red dot denotes accident location.

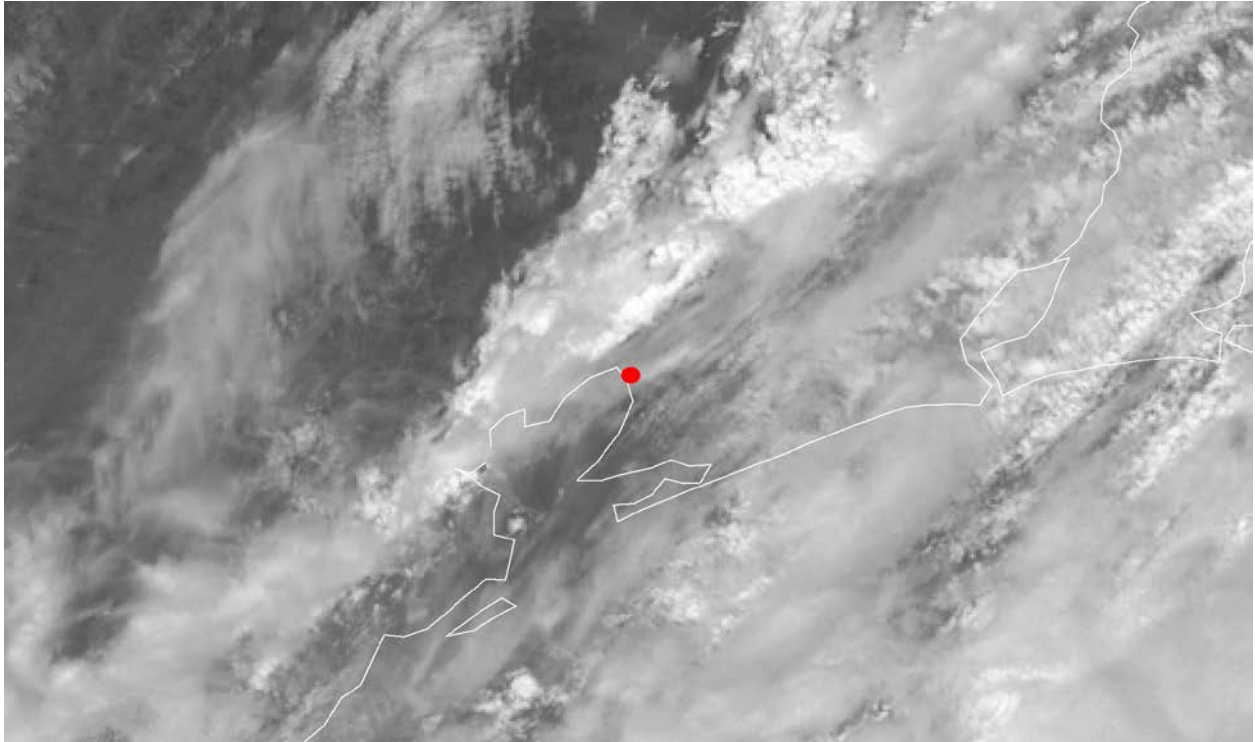


Figure J - GOES-16 visible image from 1212 CST. Red dot denotes accident location.

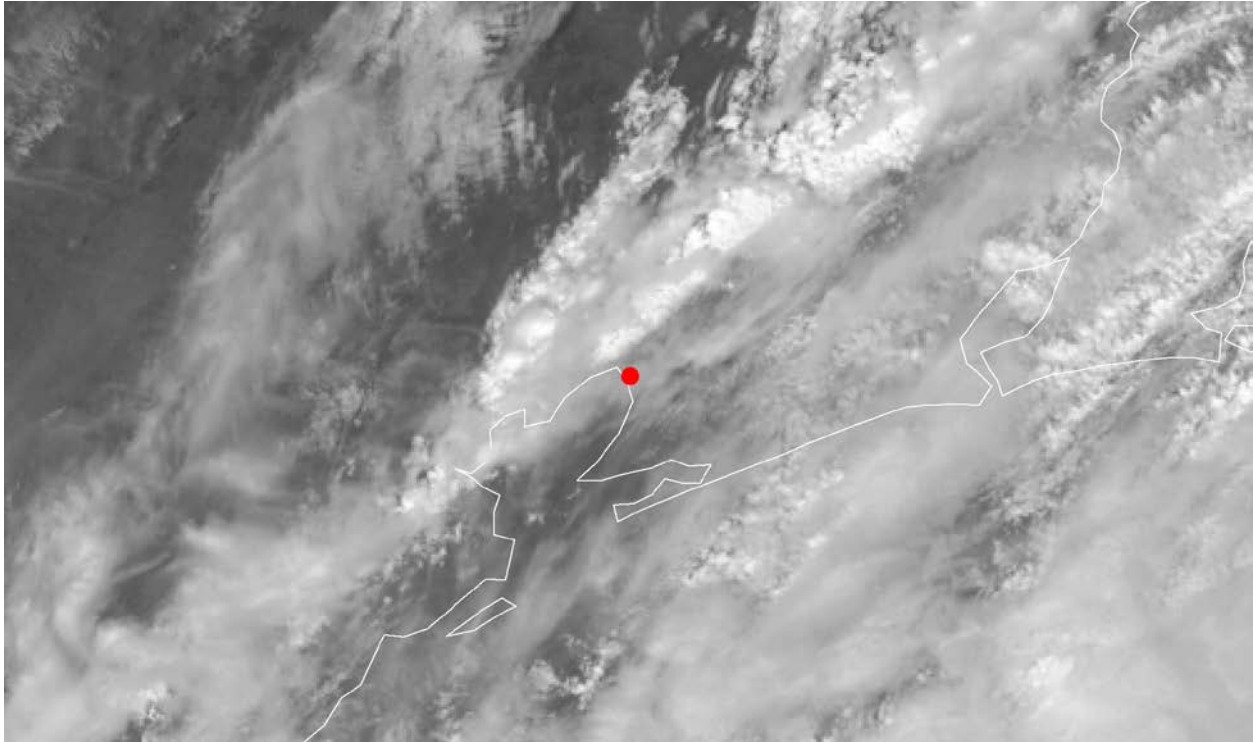


Figure K - GOES-16 visible image from 1217 CST. Red dot denotes accident location.

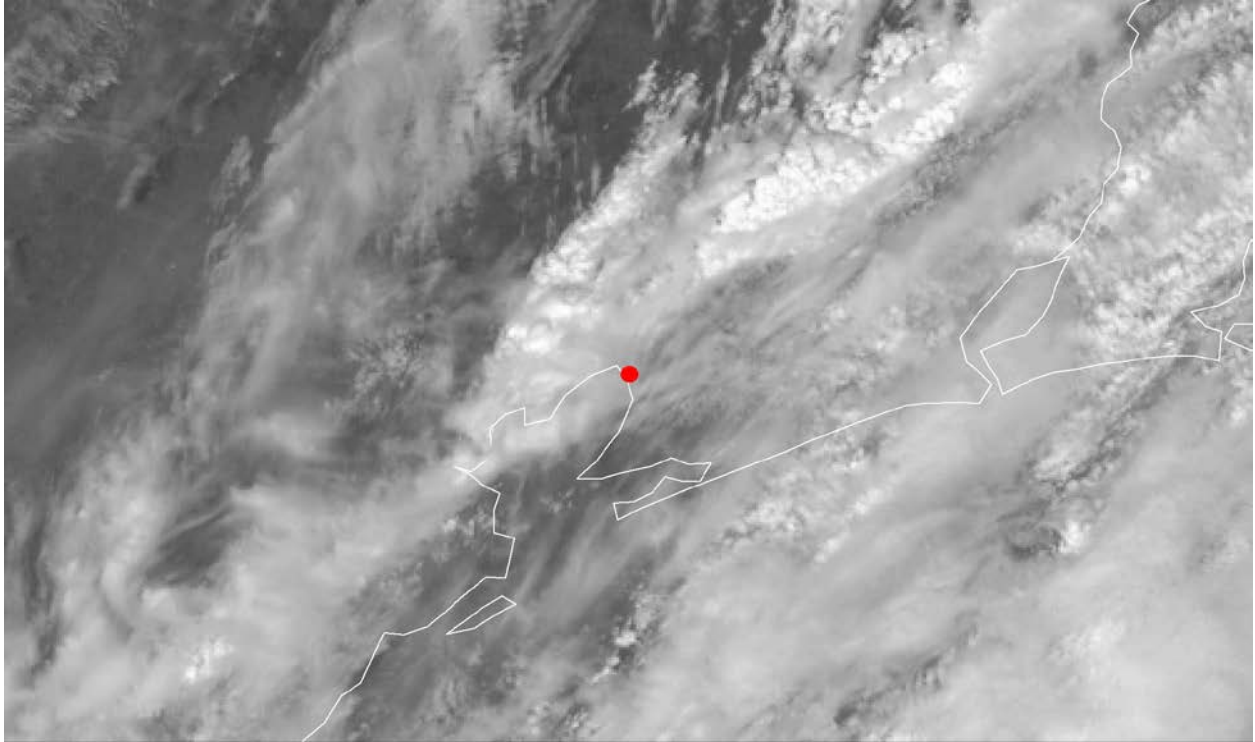


Figure L - GOES-16 visible image from 1222 CST. Red dot denotes accident location.

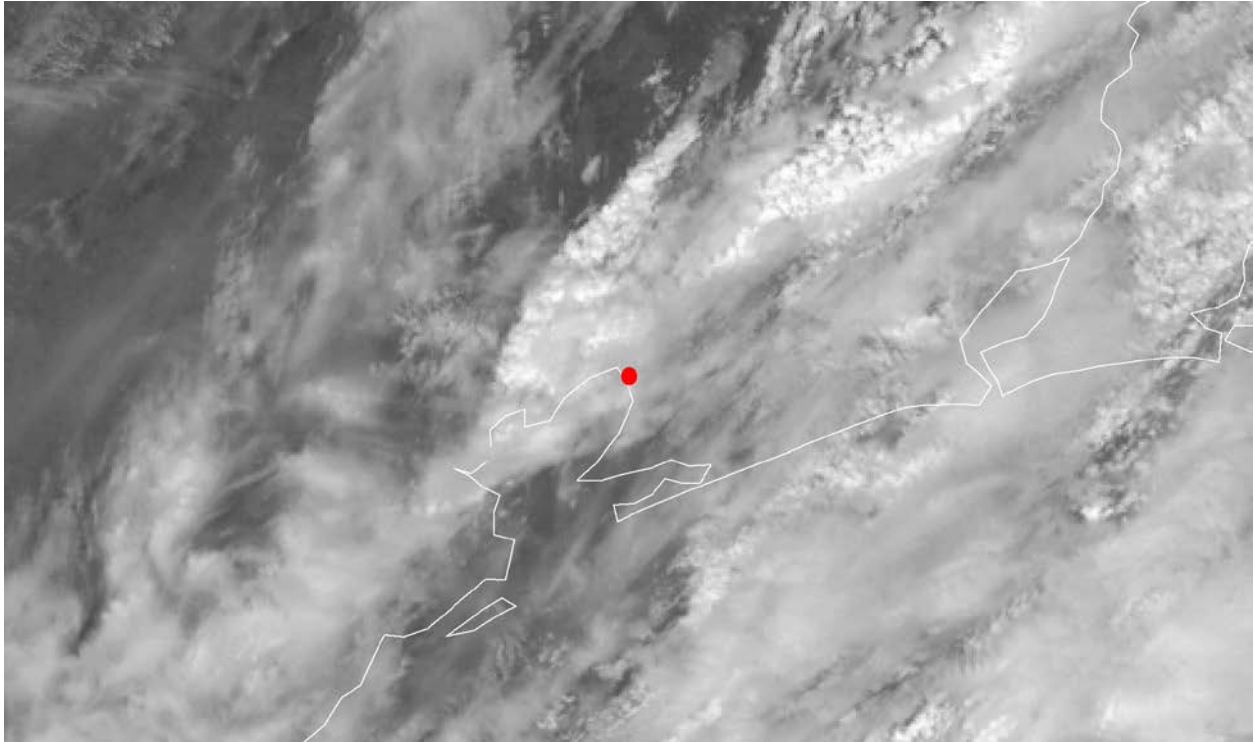


Figure M - GOES-16 visible image from 1227 CST. Red dot denotes accident location.

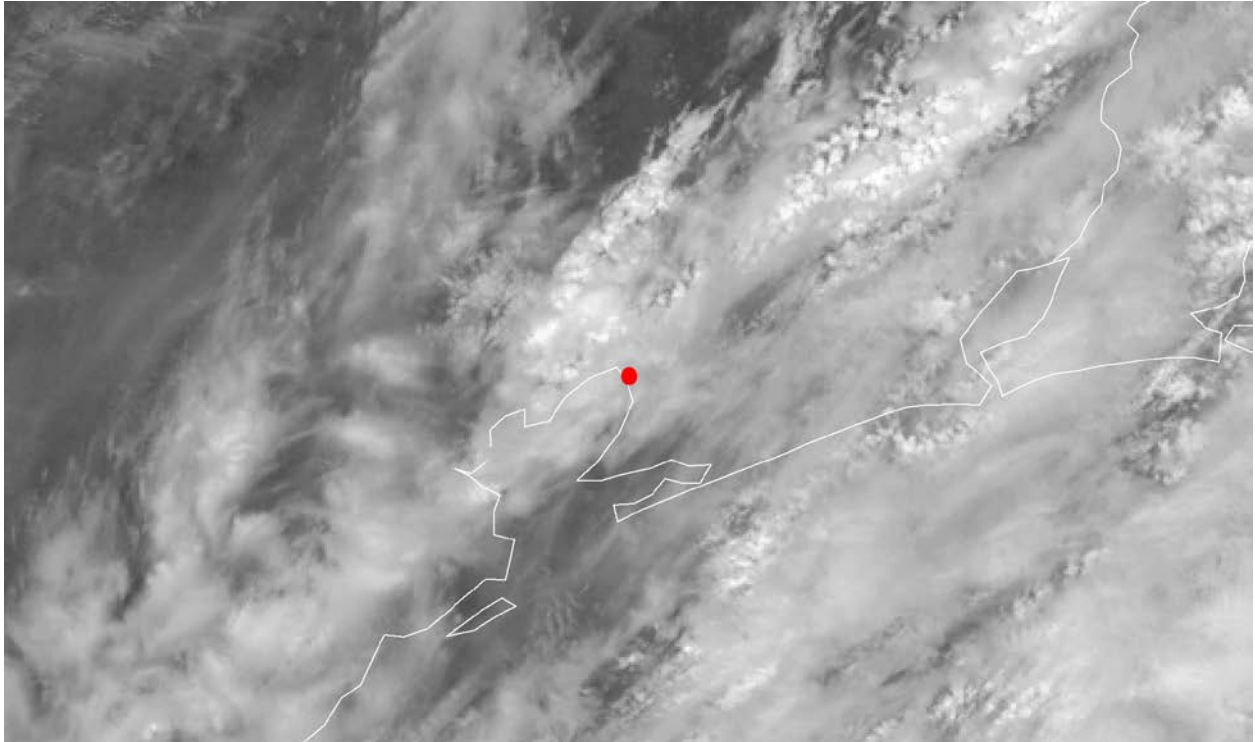


Figure N - GOES-16 visible image from 1232 CST. Red dot denotes accident location.

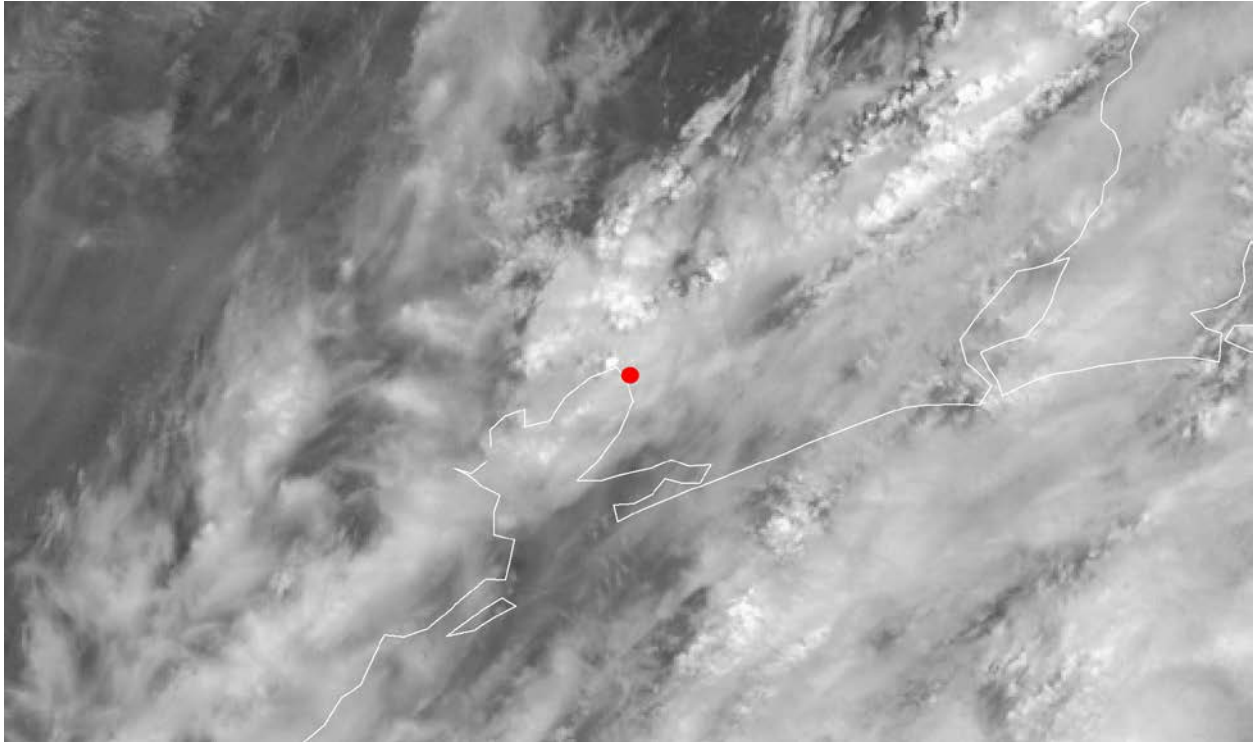


Figure O - GOES-16 visible image from 1237 CST. Red dot denotes accident location.