

## Weather Study – Attachment 2

WRF simulation imagery

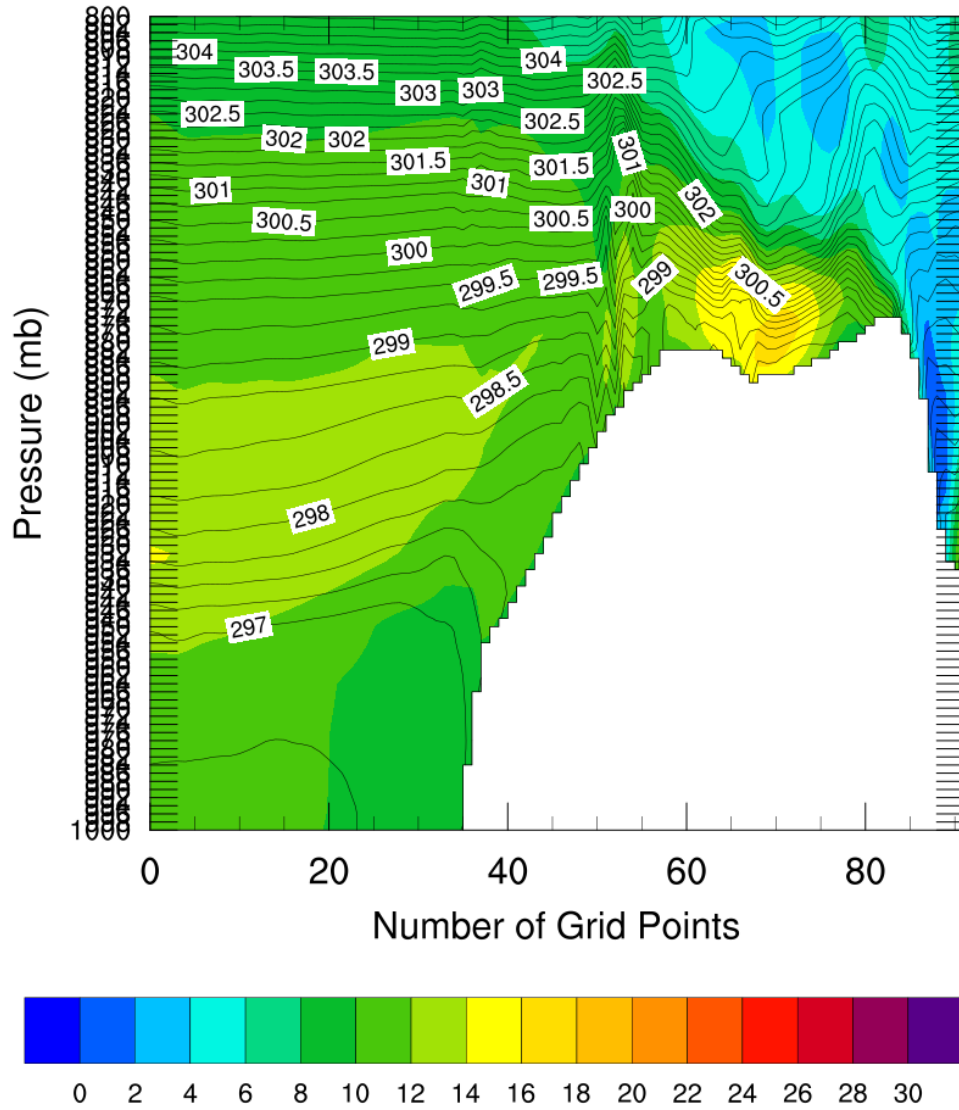
# METEOROLOGY

ANC20MA010

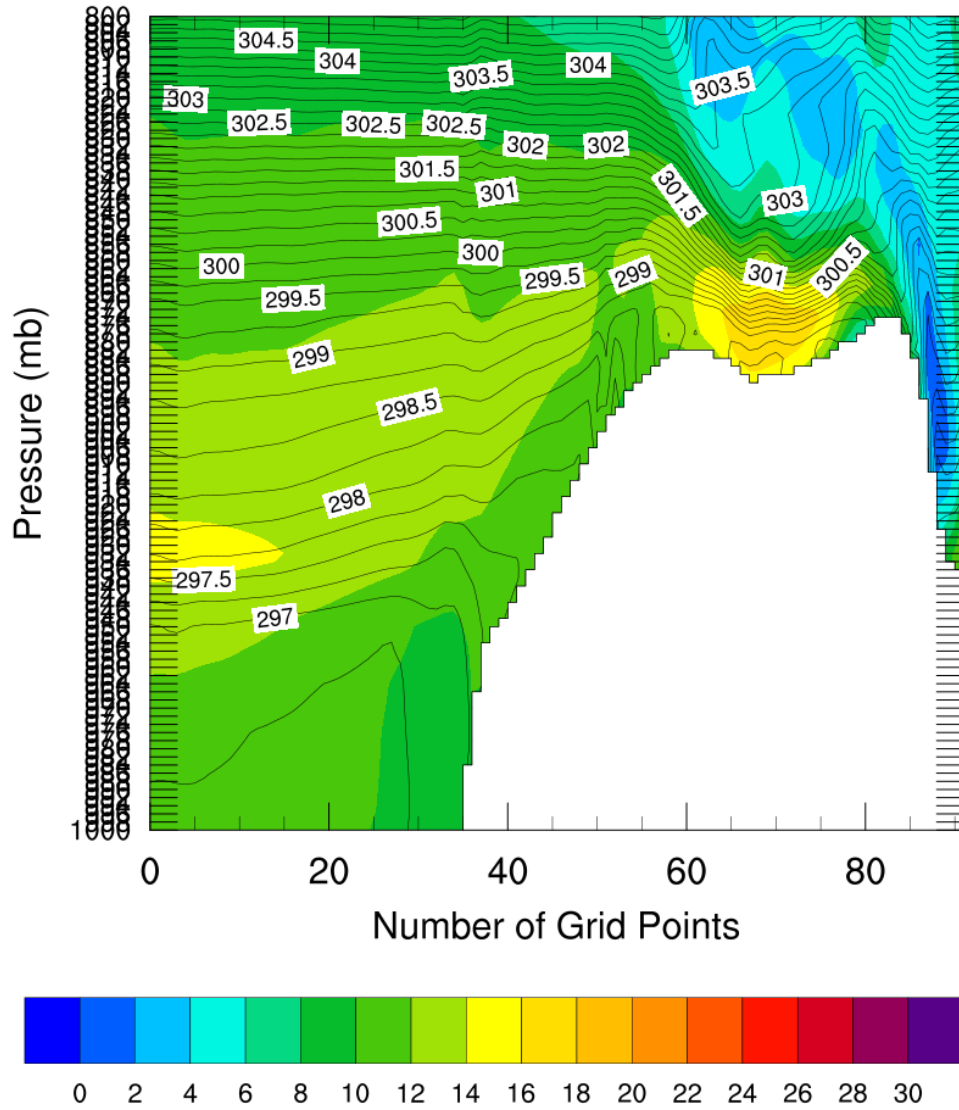
Times are UTC. Vertical cross sections are west-to-east (left-to-right) along the 22.135431° North parallel; west and east plot boundaries are on the 159.833° West and 159.550° West meridians, respectively. The terrain map is applicable for all plan view images, which are along the 910 hPa pressure surface. Vertical speed plots are in feet-per-minute (color contours). Sounding plots labelled “N of Accident Site” are at 22.155431° North, 159.681672° West.

*Submitted by: Mike Richards  
NTSB, AS-30*

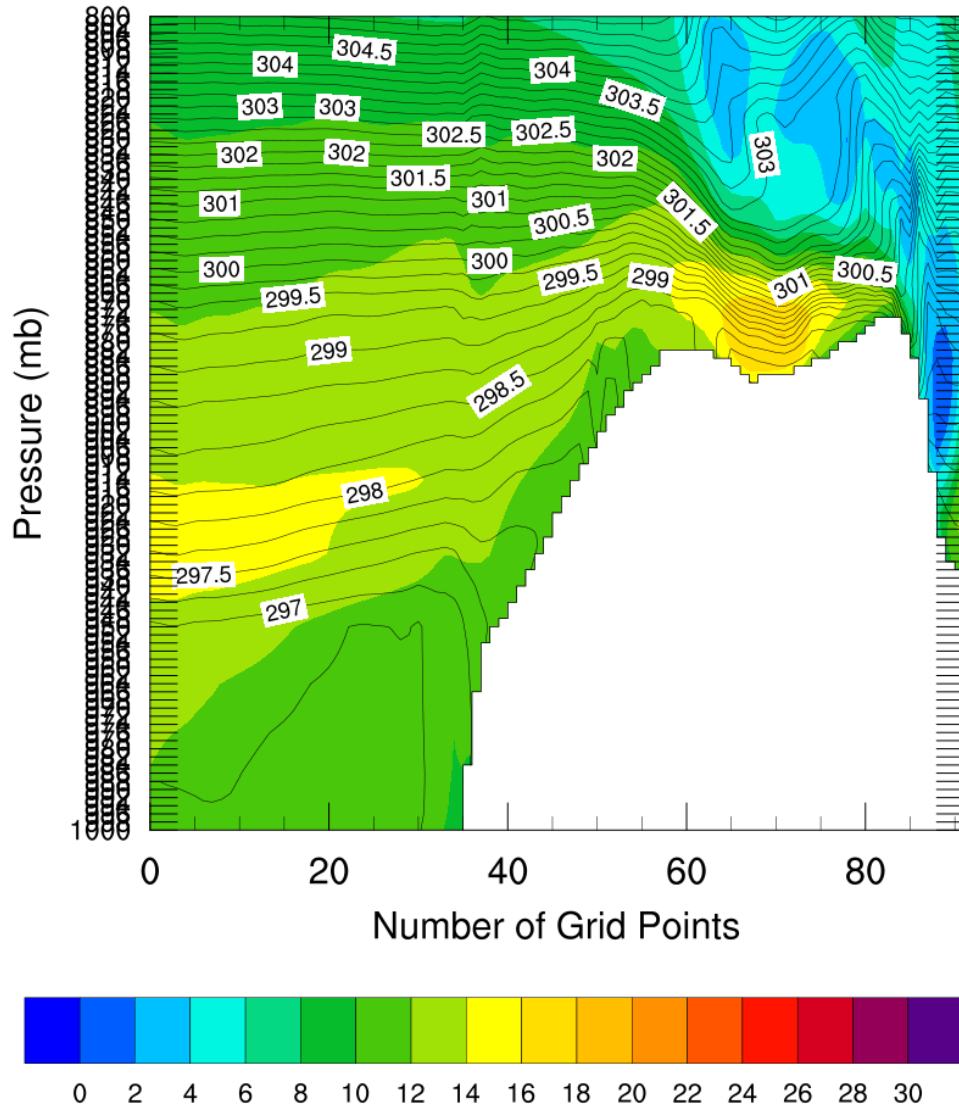
# Horizontal Speed 2019-12-27\_02:30:00



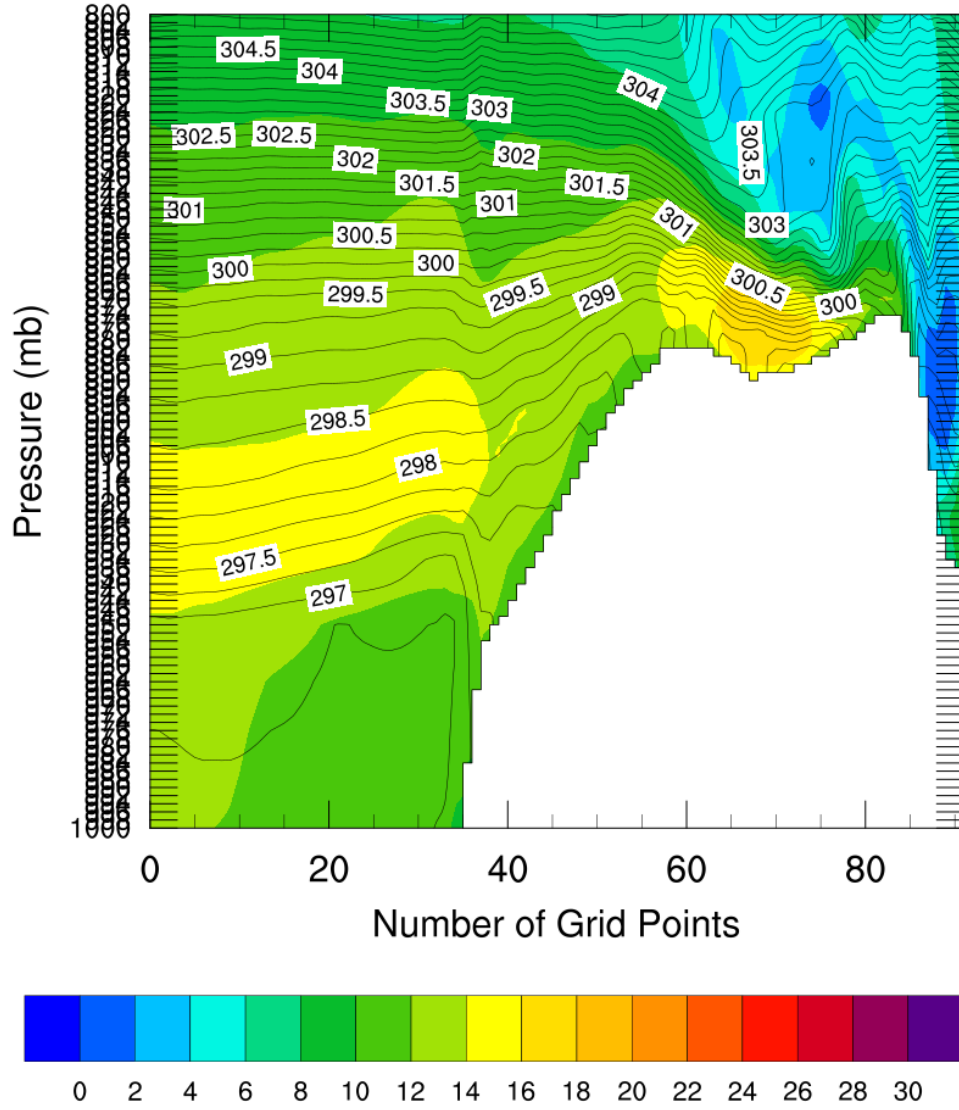
# Horizontal Speed 2019-12-27\_02:40:00



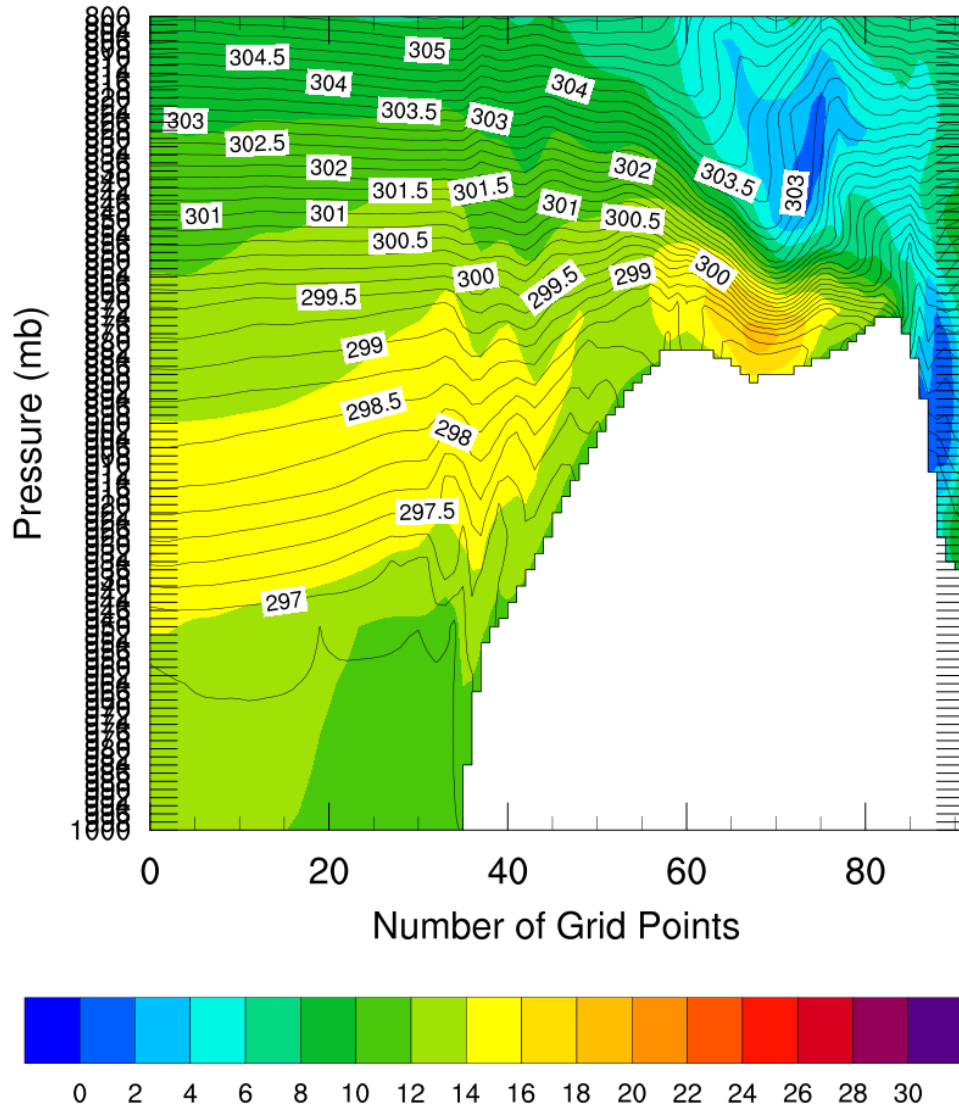
# Horizontal Speed 2019-12-27\_02:50:00



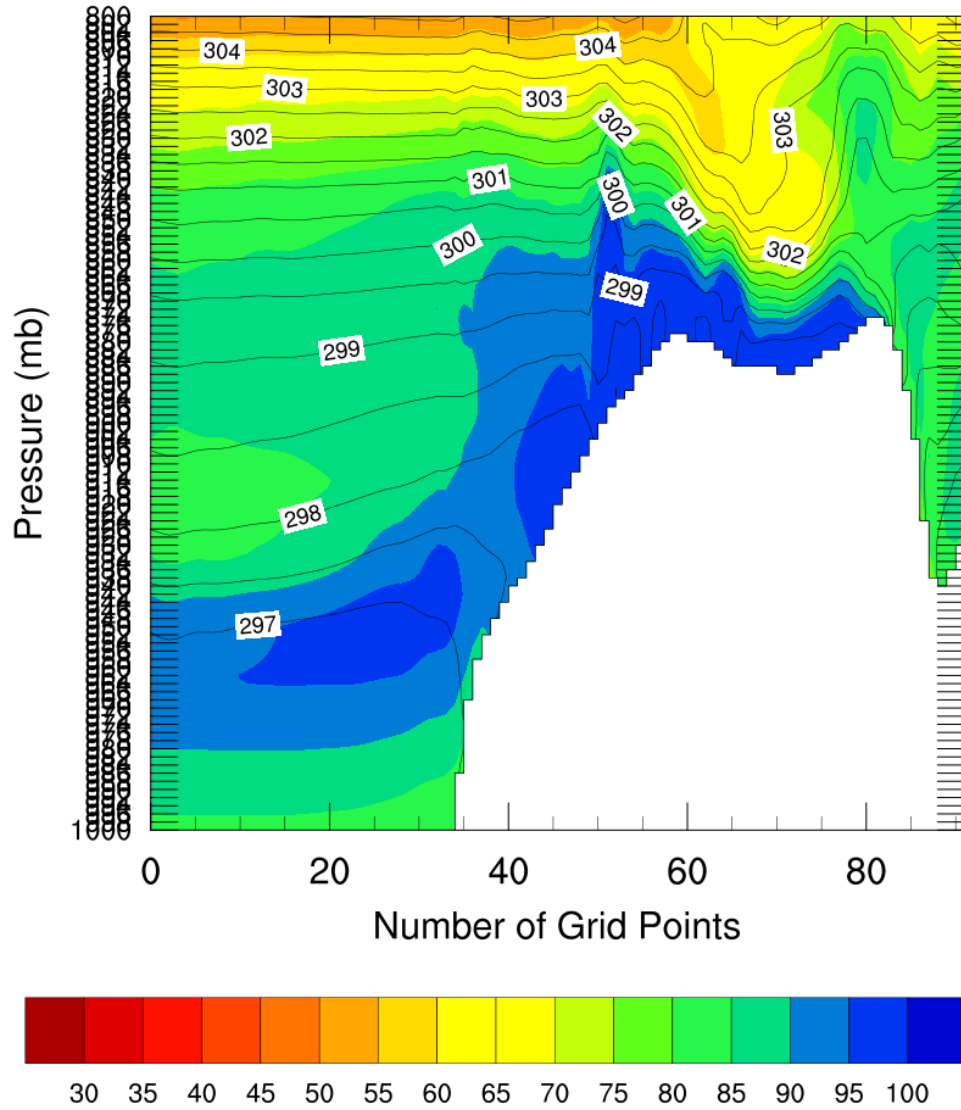
# Horizontal Speed 2019-12-27\_03:00:00



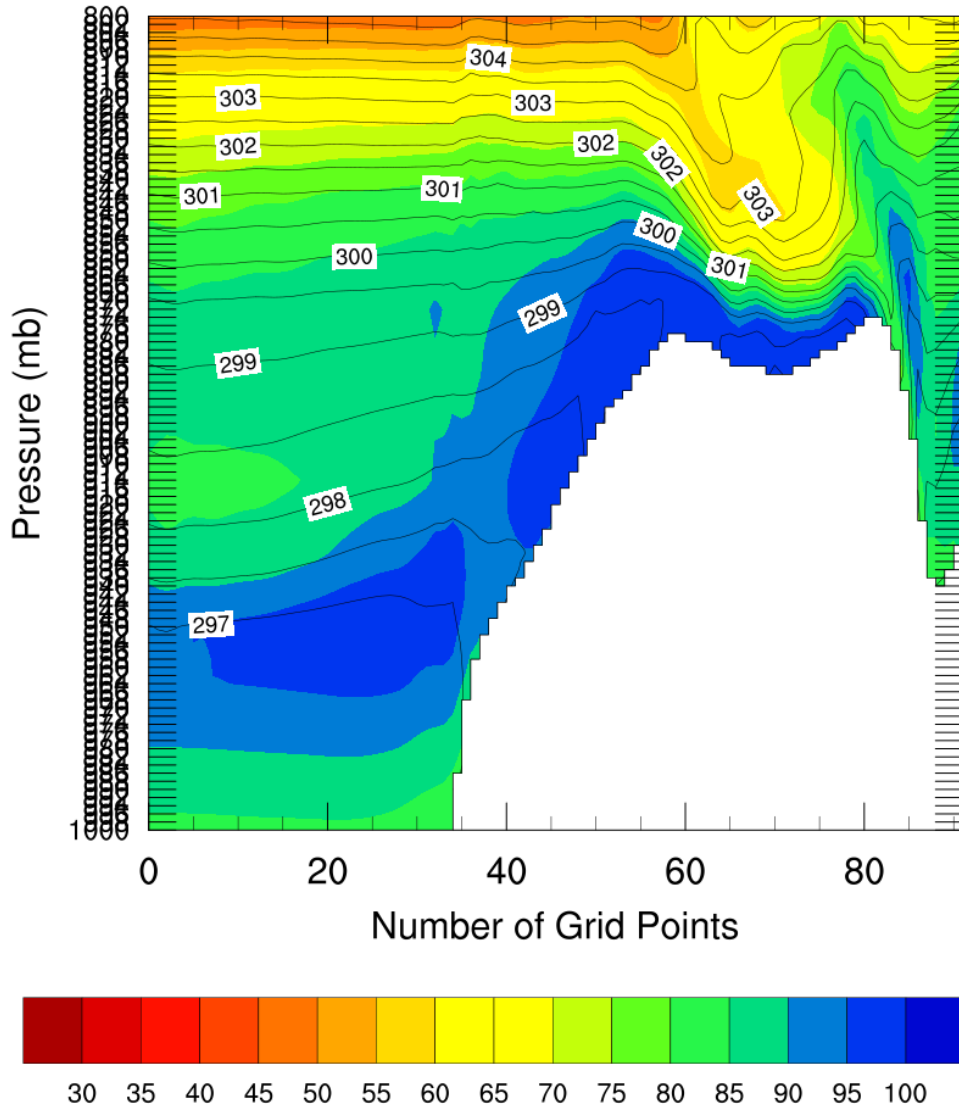
# Horizontal Speed 2019-12-27\_03:10:00



# Relative Humidity 2019-12-27\_02:30:00

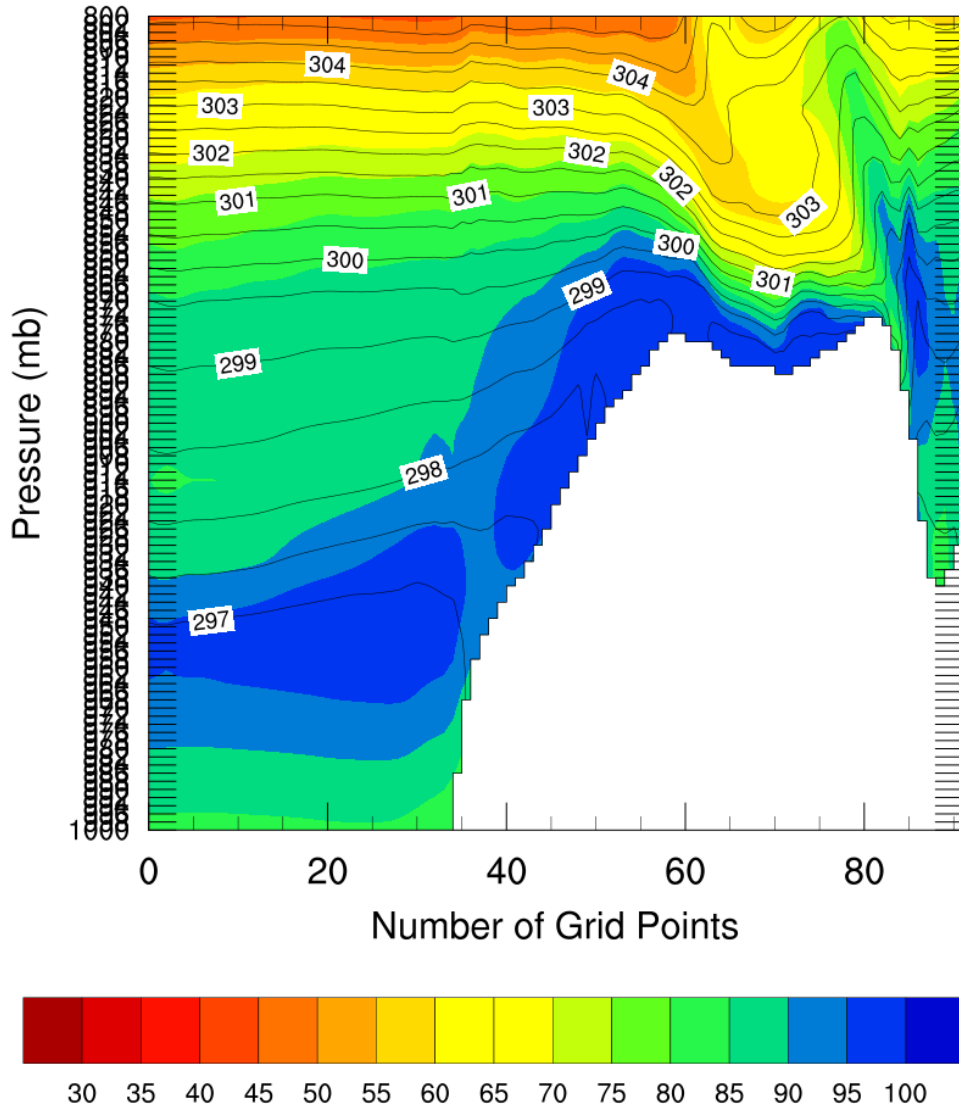


Relative Humidity 2019-12-27\_02:40:00

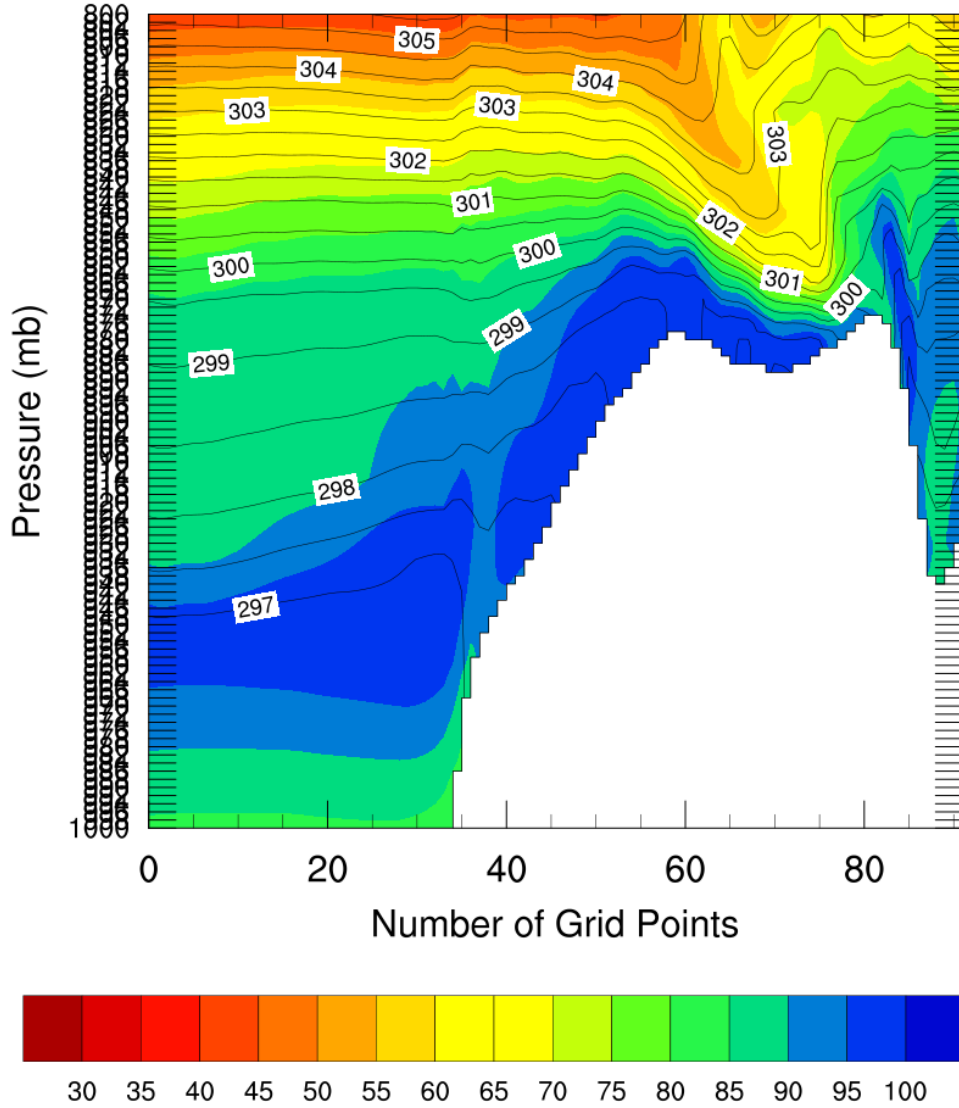




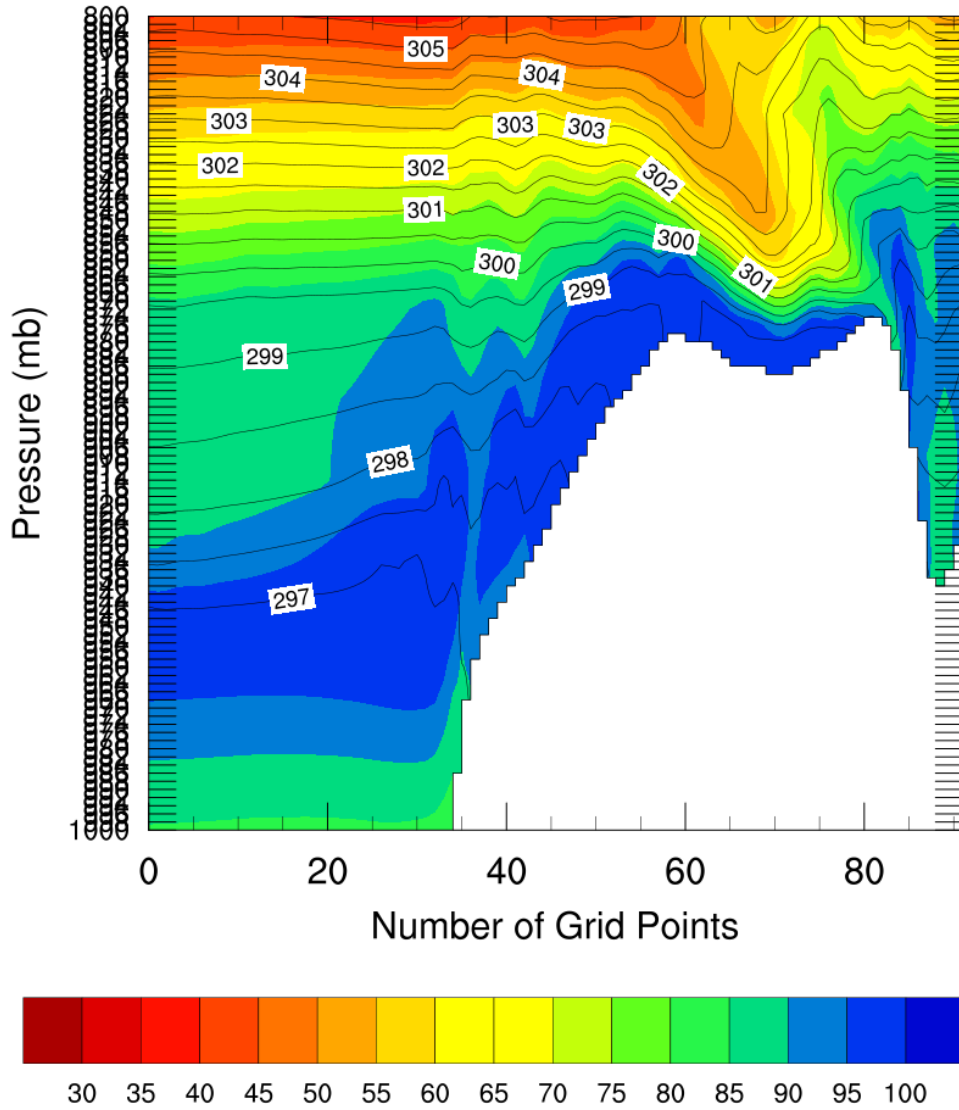
Relative Humidity 2019-12-27\_02:50:00



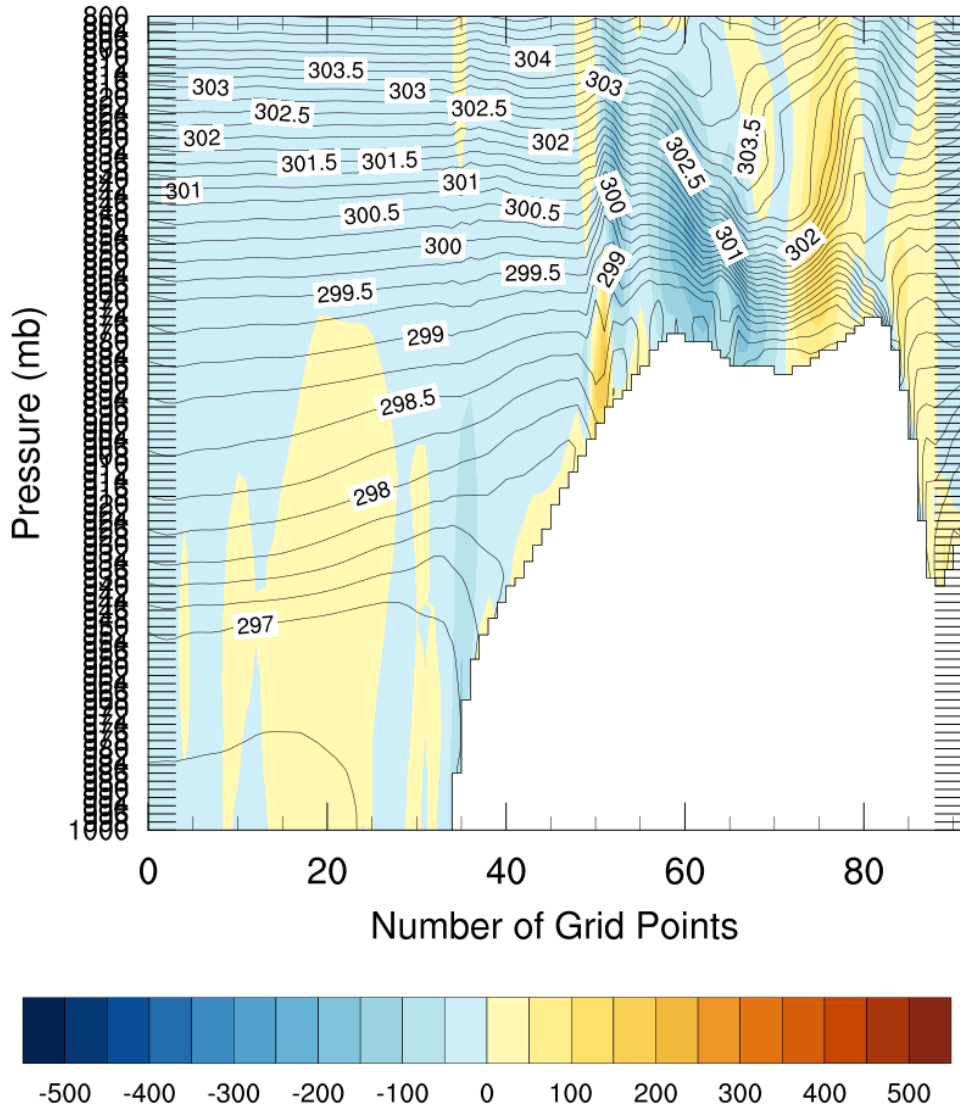
# Relative Humidity 2019-12-27\_03:00:00



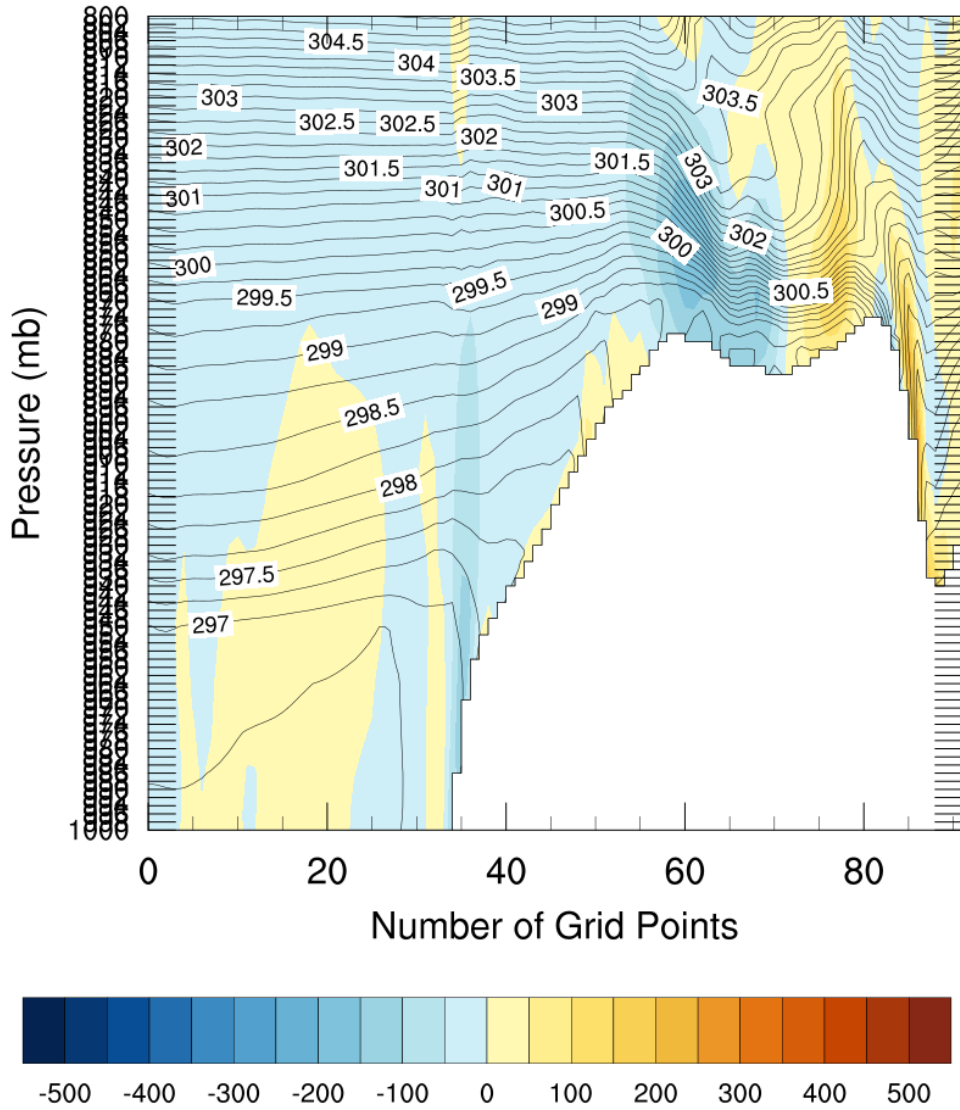
# Relative Humidity 2019-12-27\_03:10:00



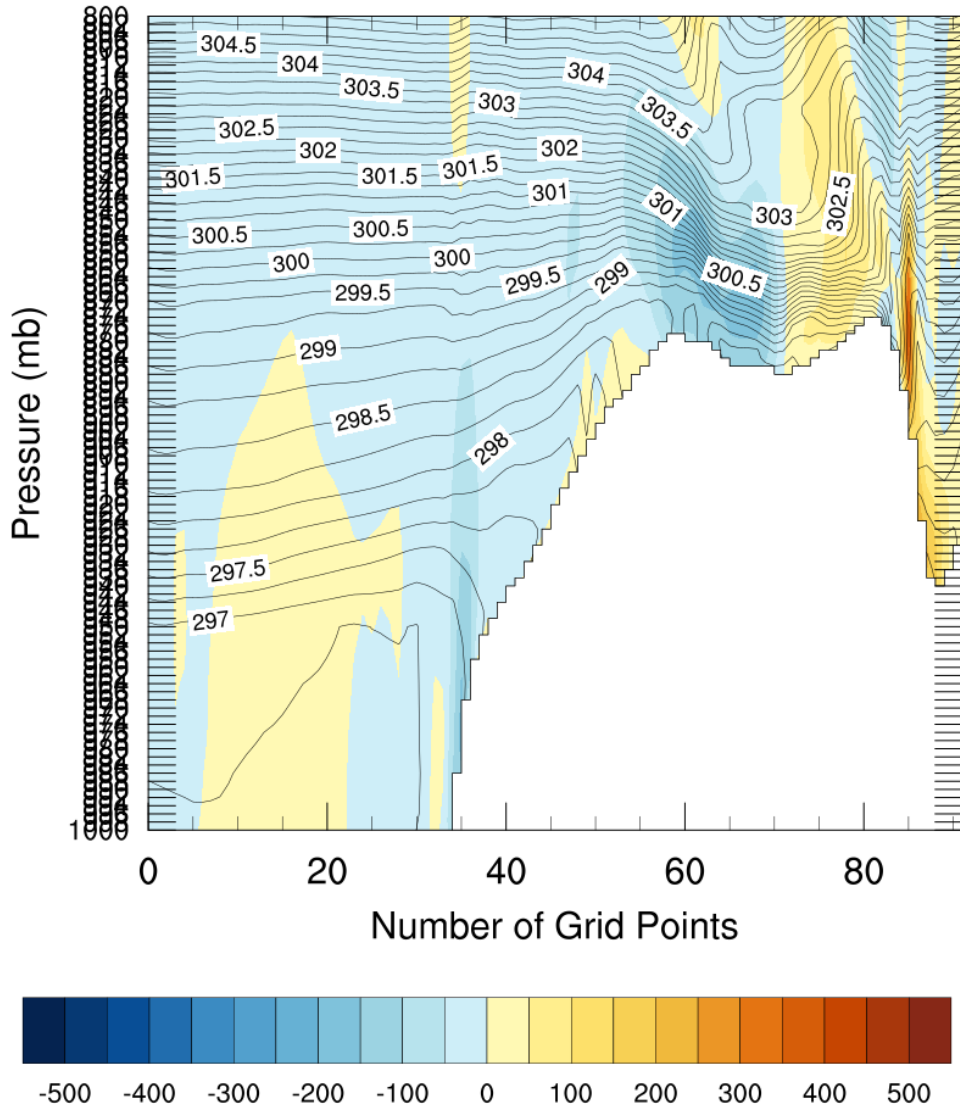
# Vertical Velocity 2019-12-27\_02:30:00



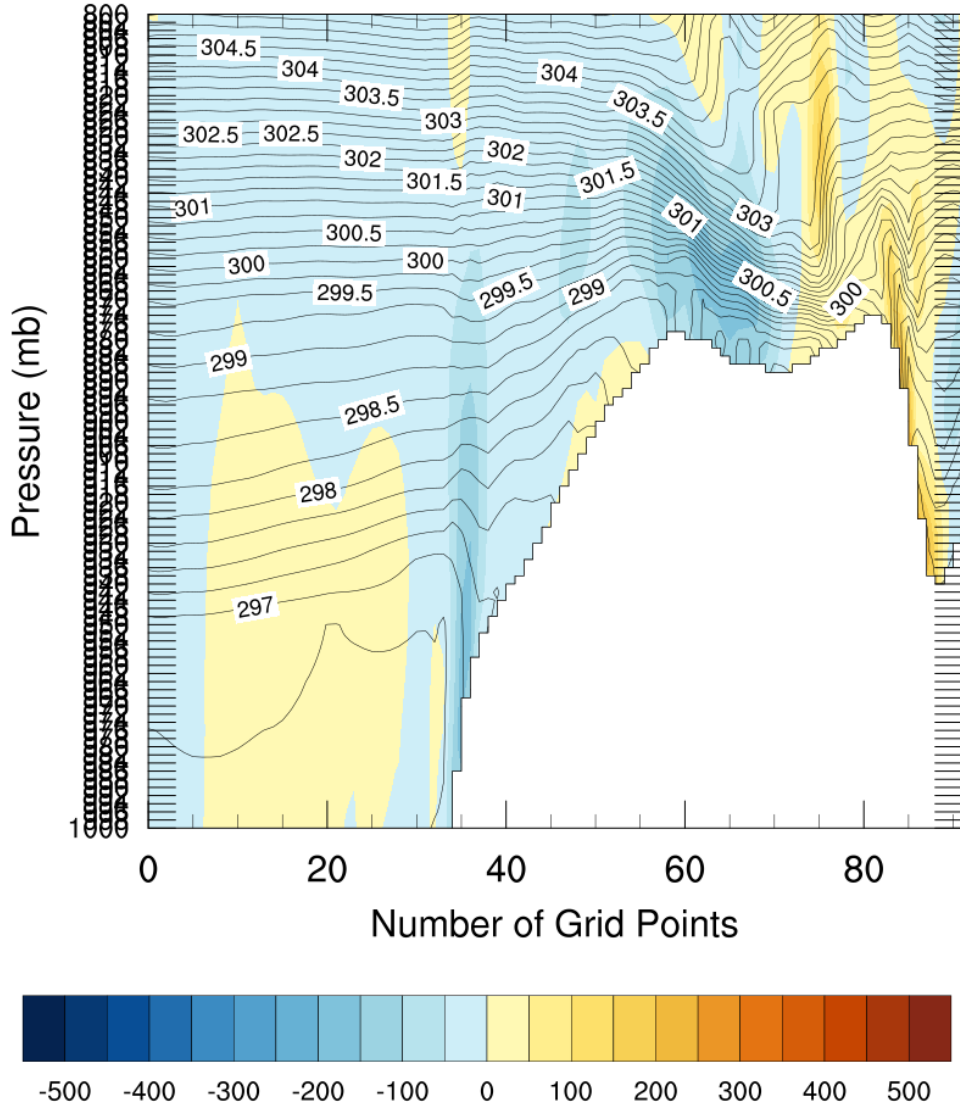
# Vertical Velocity 2019-12-27\_02:40:00



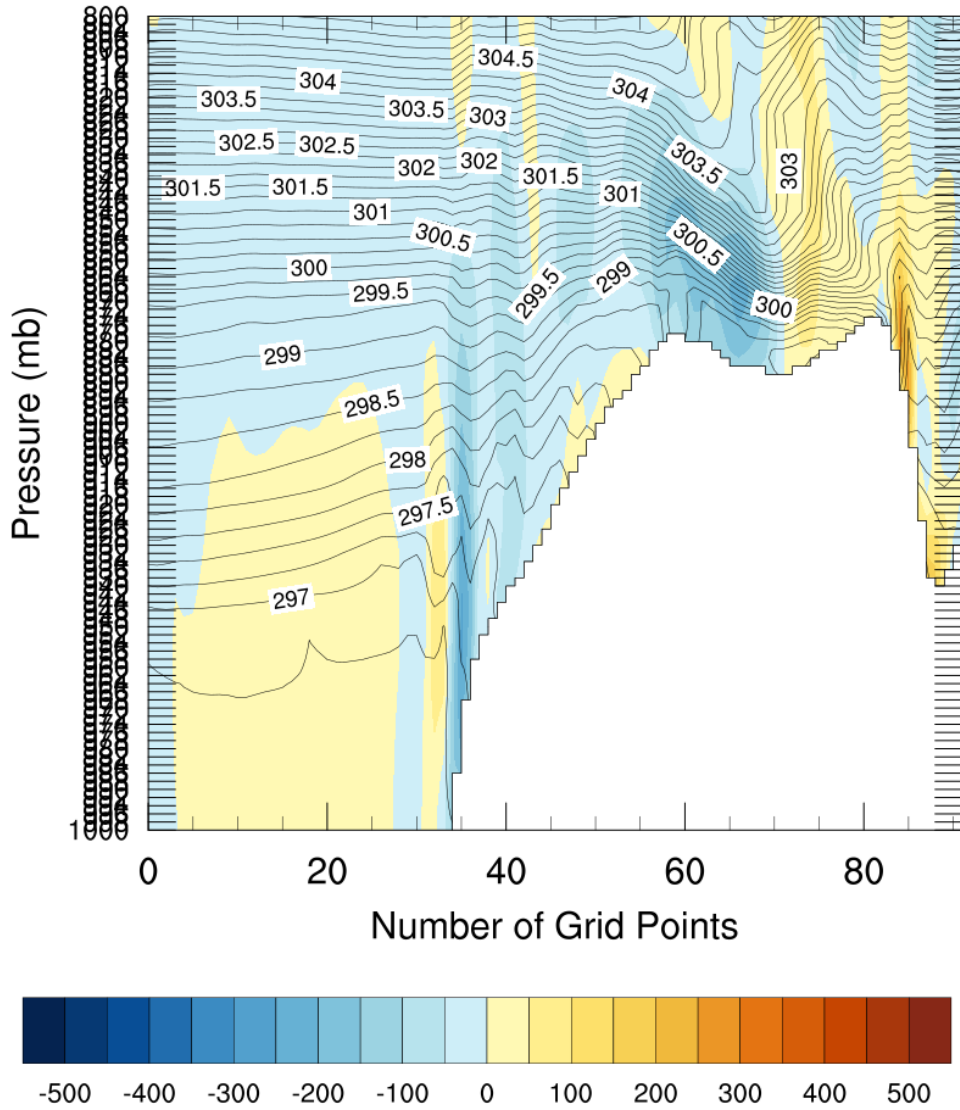
# Vertical Velocity 2019-12-27\_02:50:00



# Vertical Velocity 2019-12-27\_03:00:00



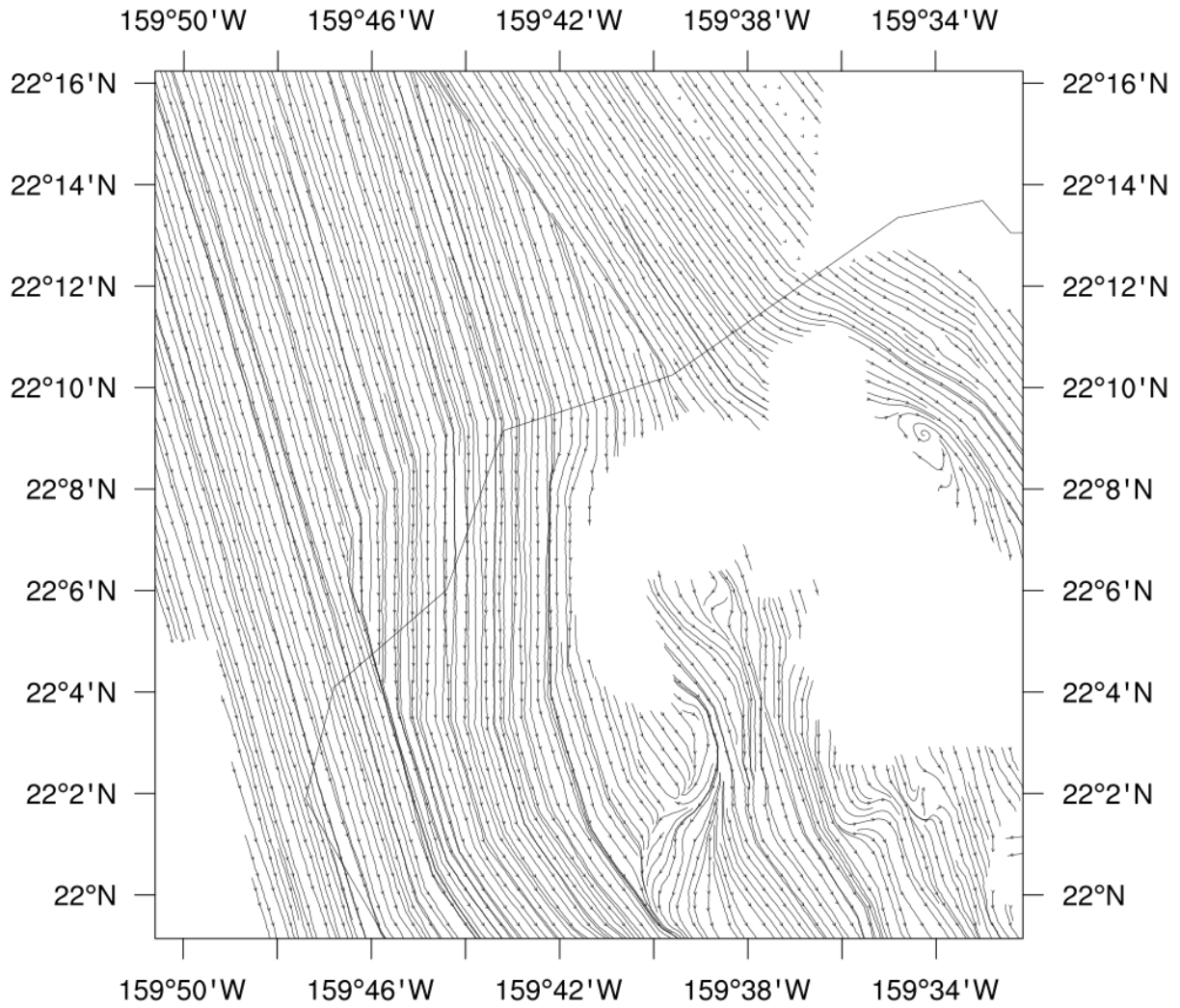
# Vertical Velocity 2019-12-27\_03:10:00





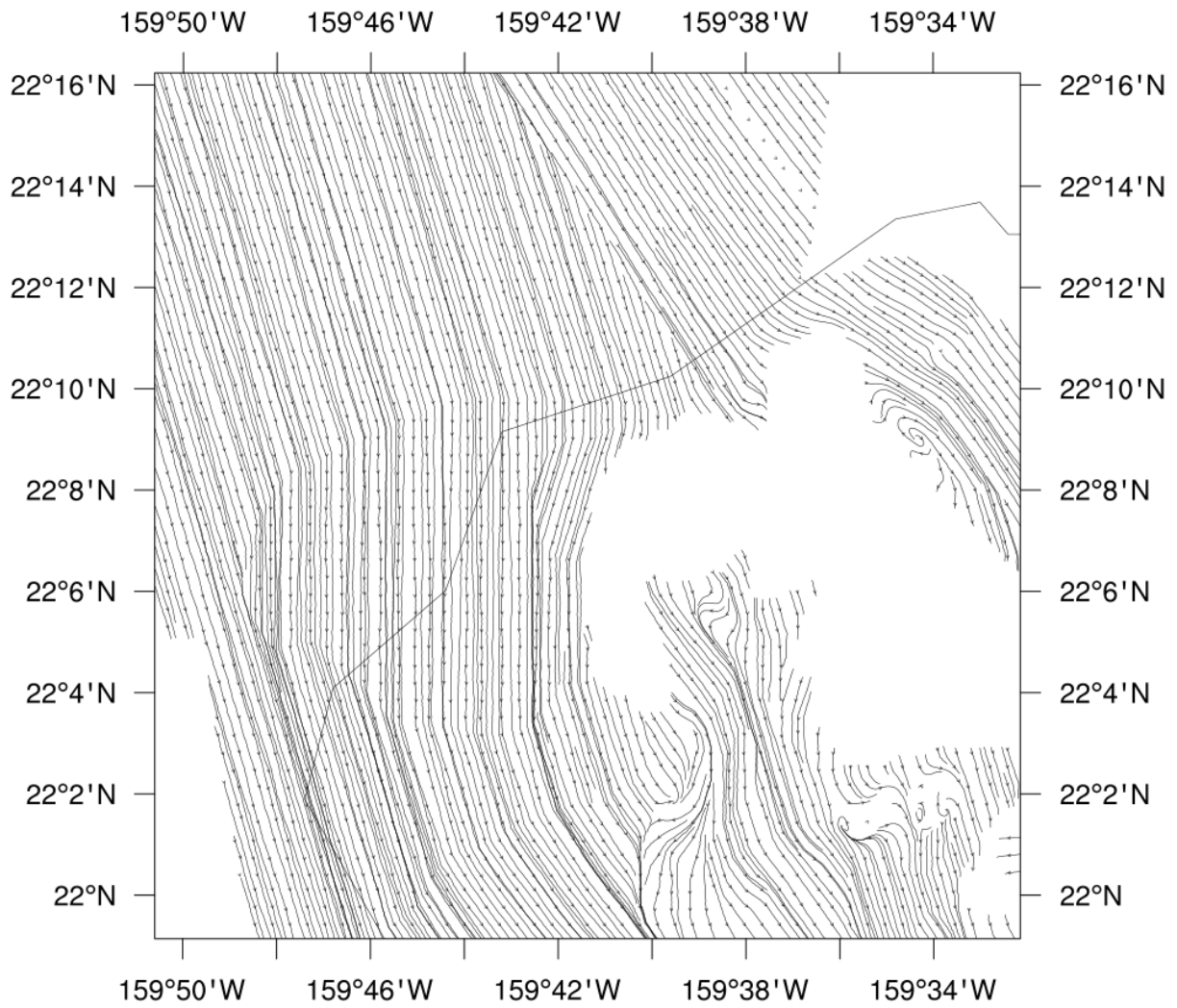
# x-wind component

fts



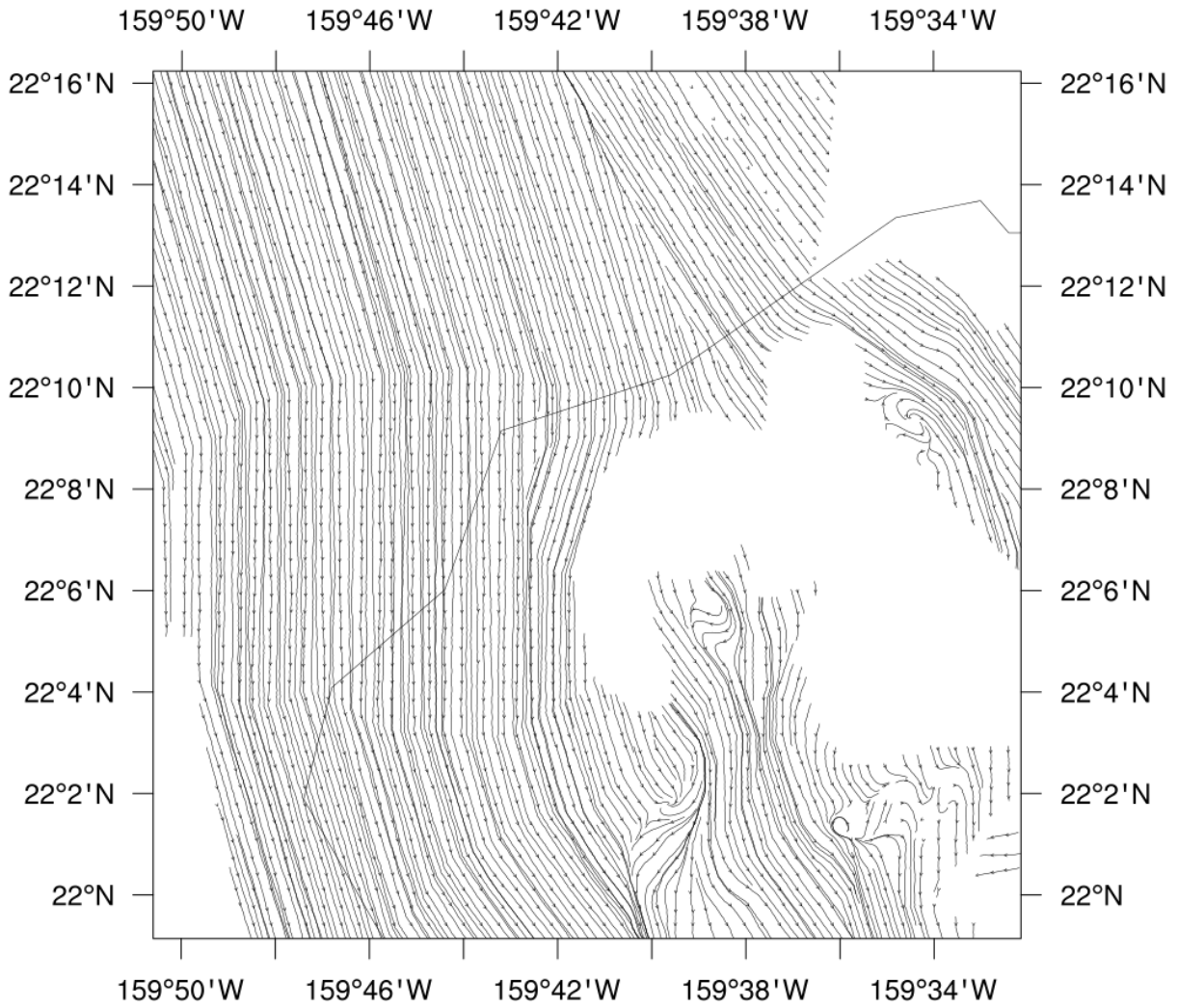
# x-wind component

kts



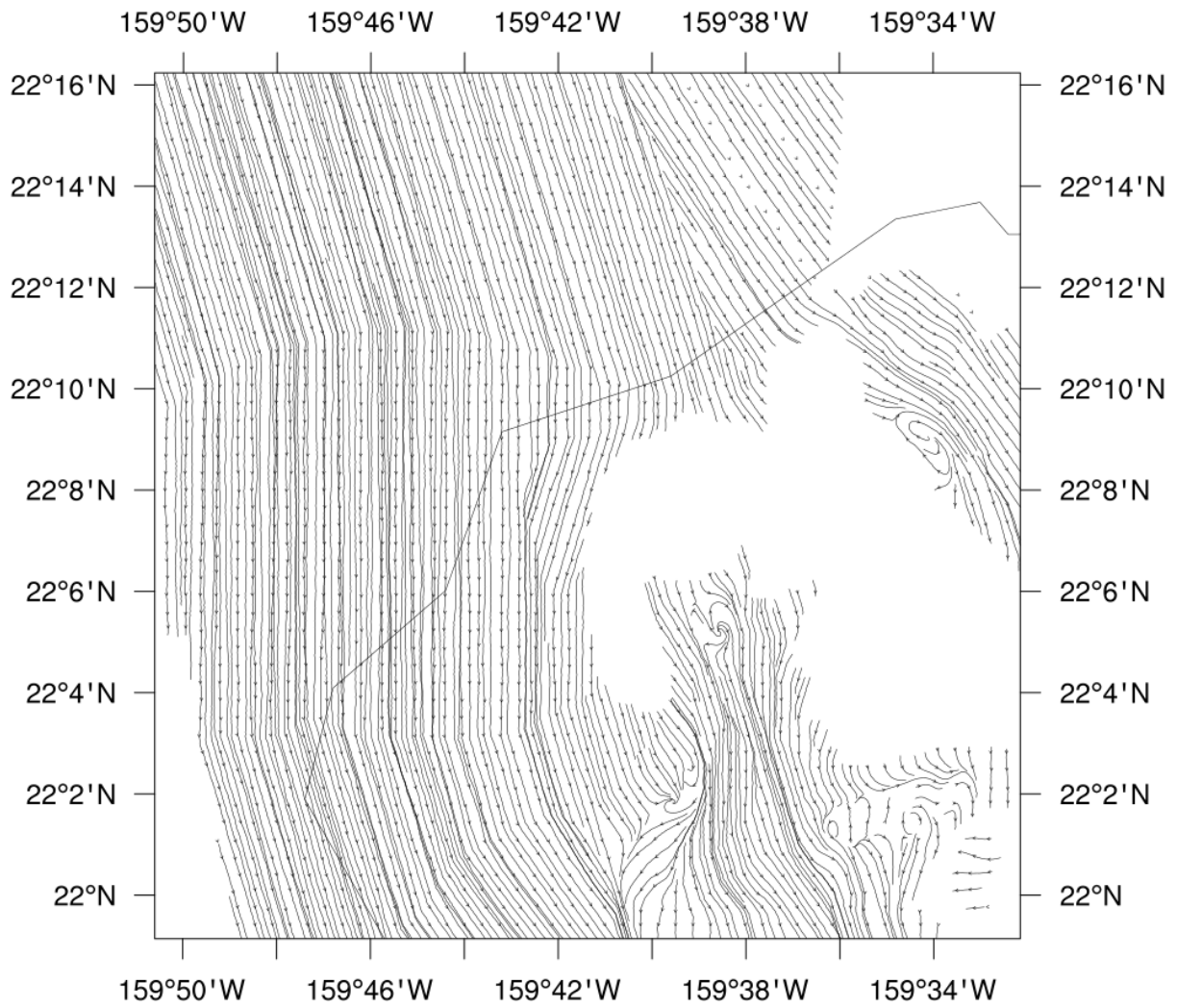
# x-wind component

kts

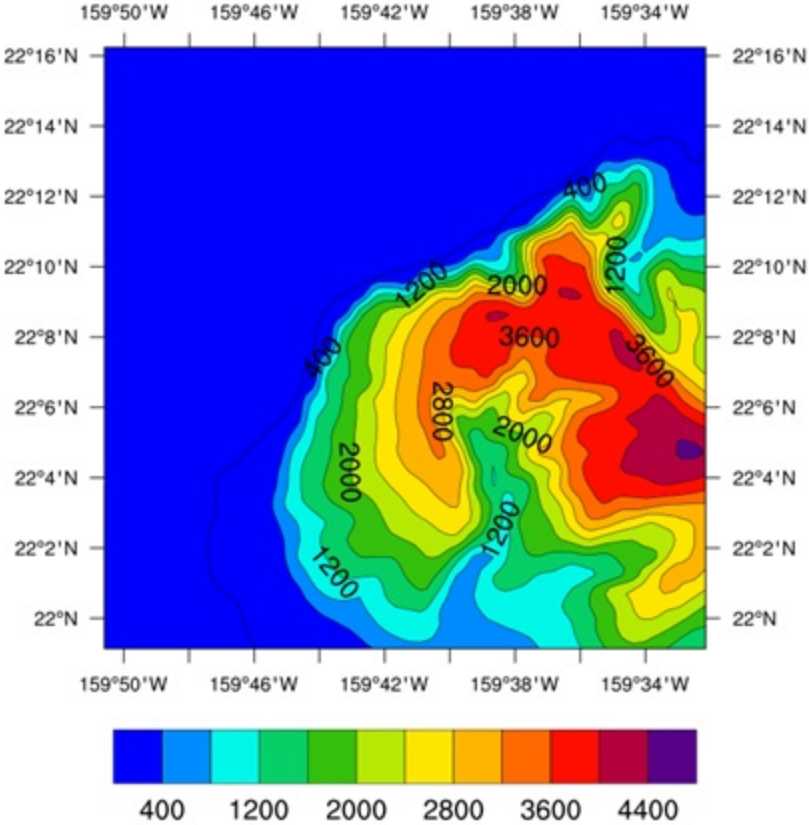


# x-wind component

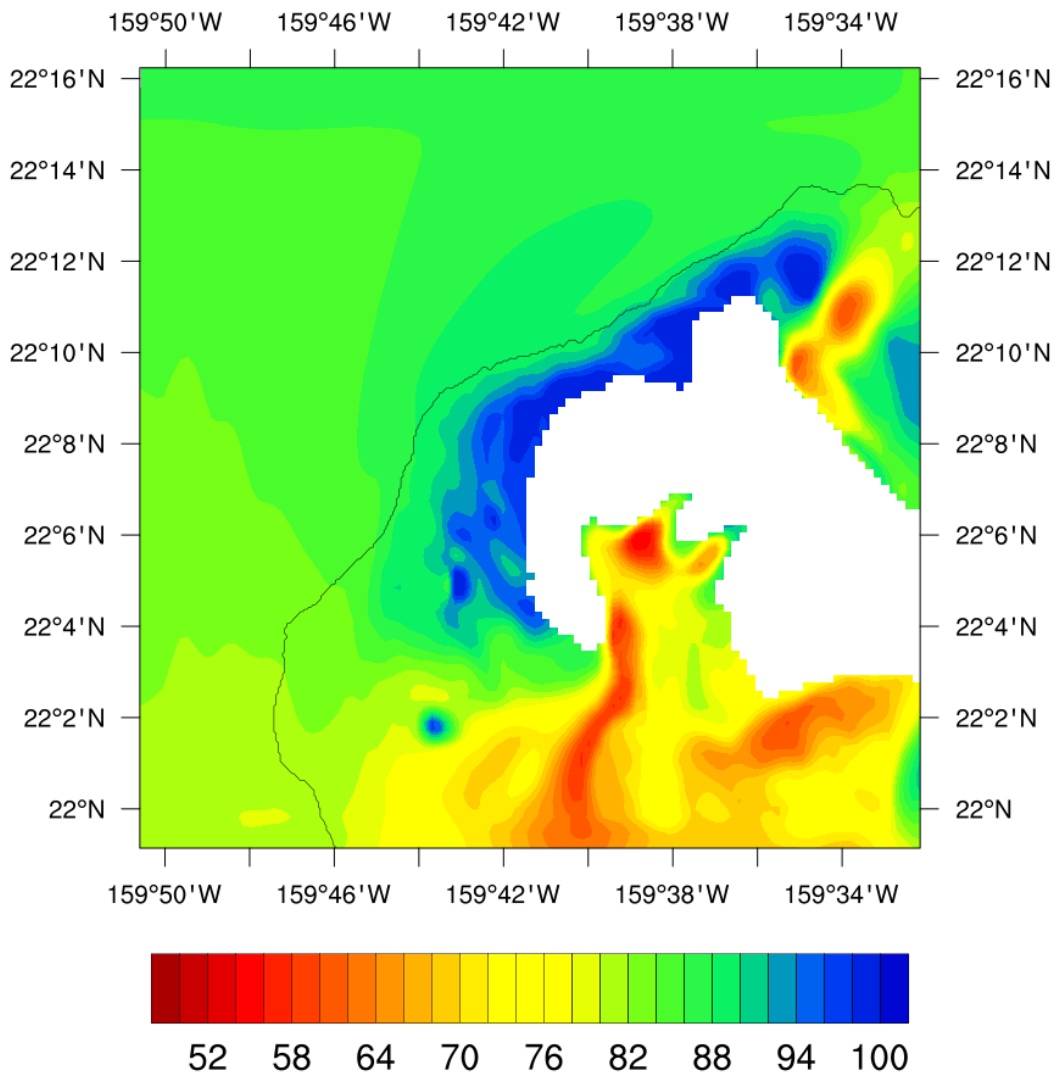
kts



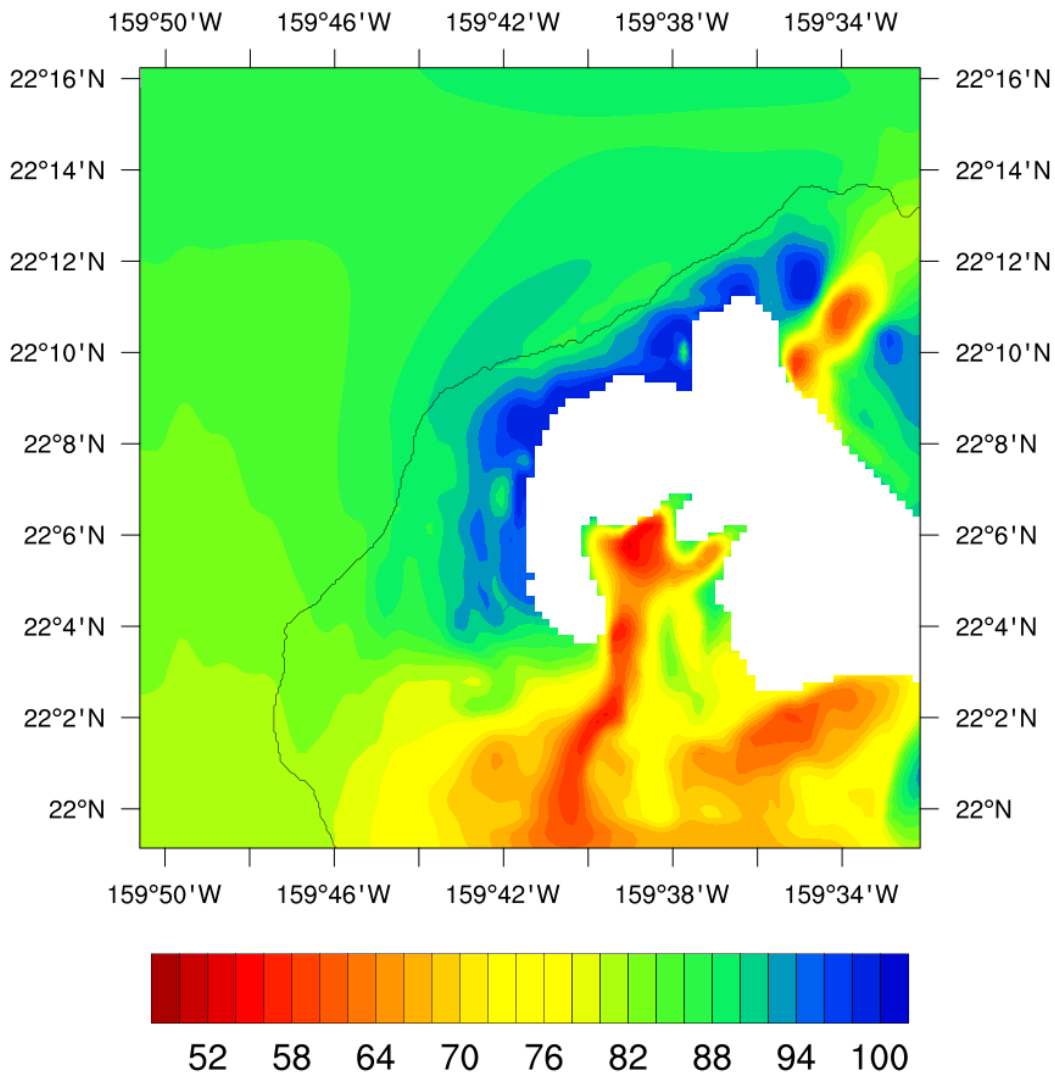
# Terrain Height



# Relative Humidity %

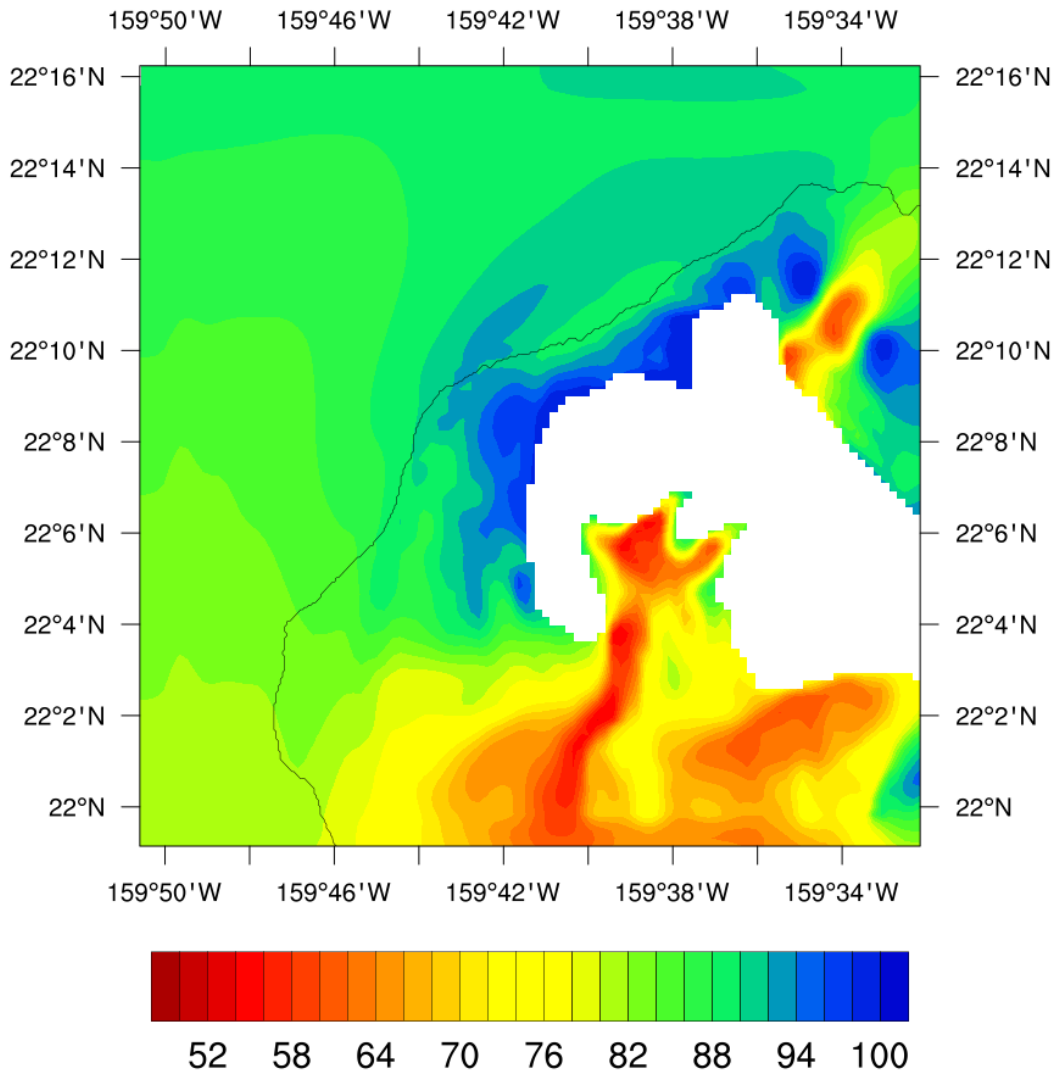


# Relative Humidity %



# Relative Humidity

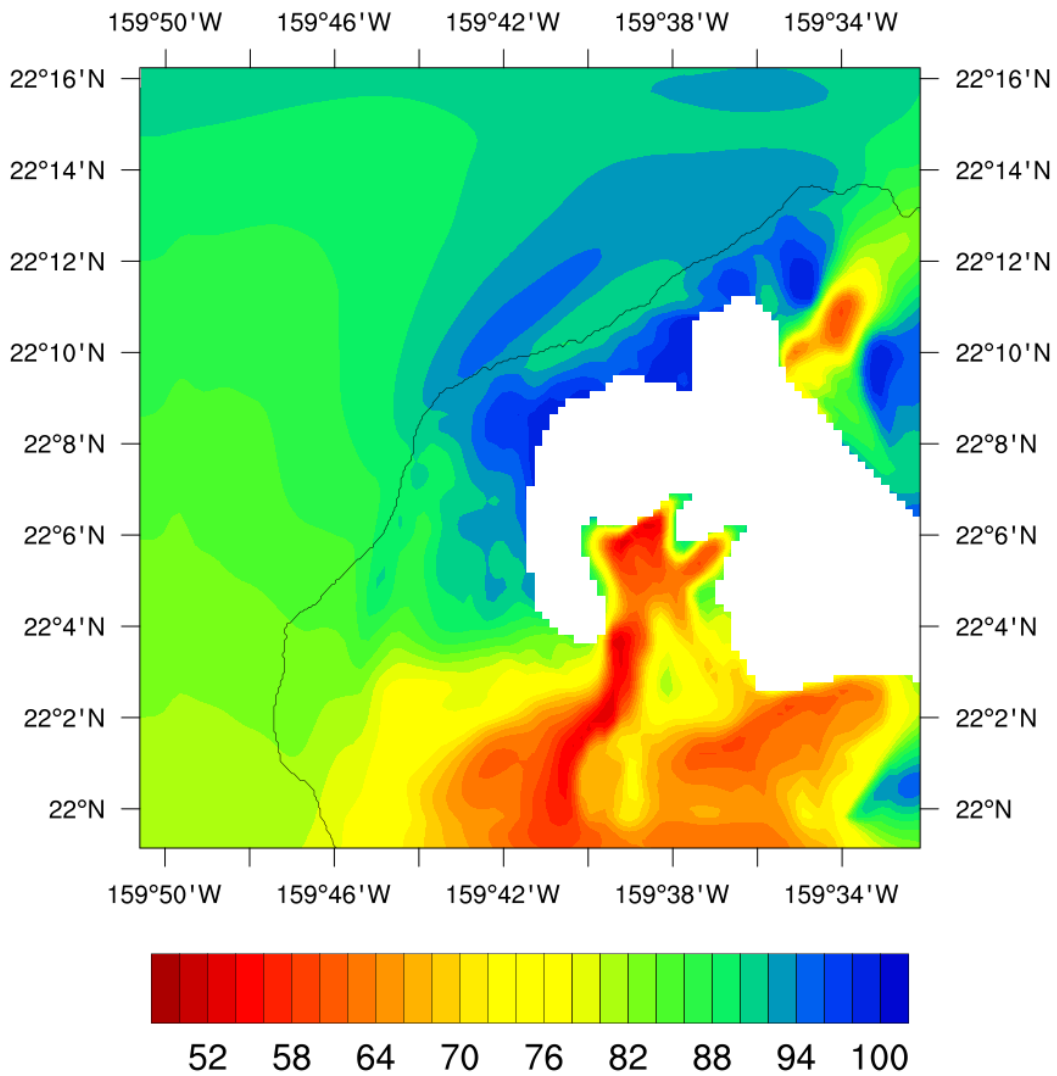
%





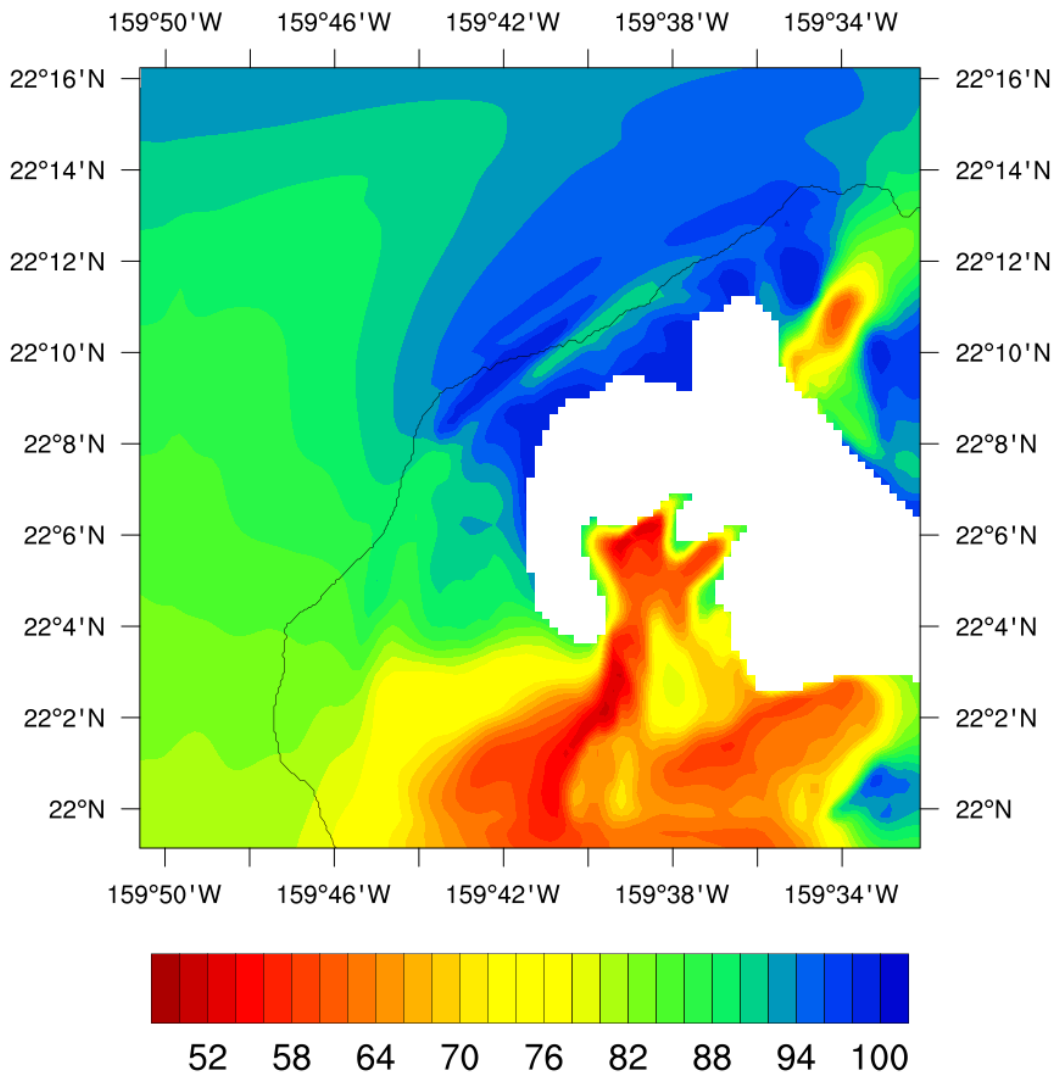
# Relative Humidity

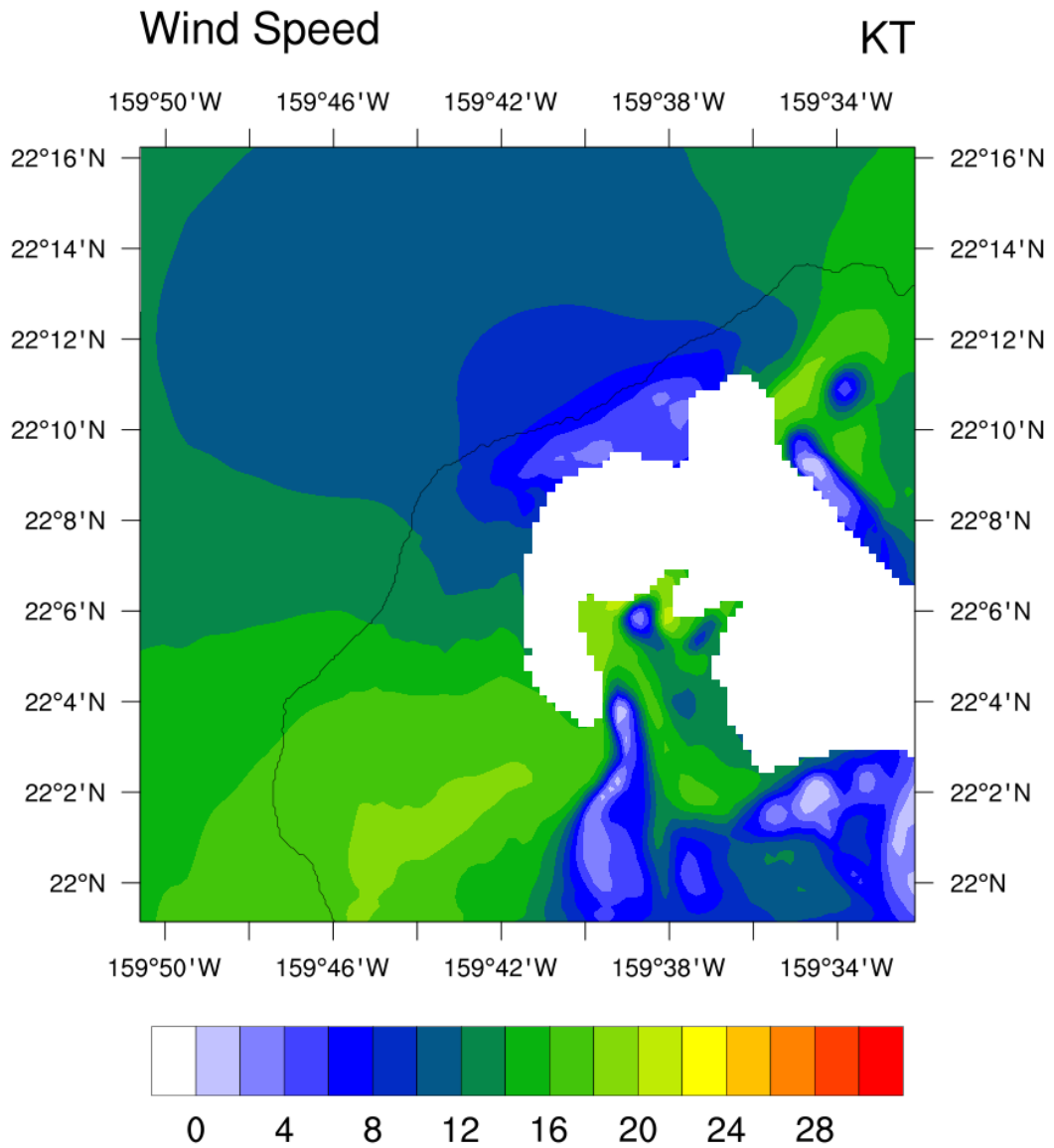
%



# Relative Humidity

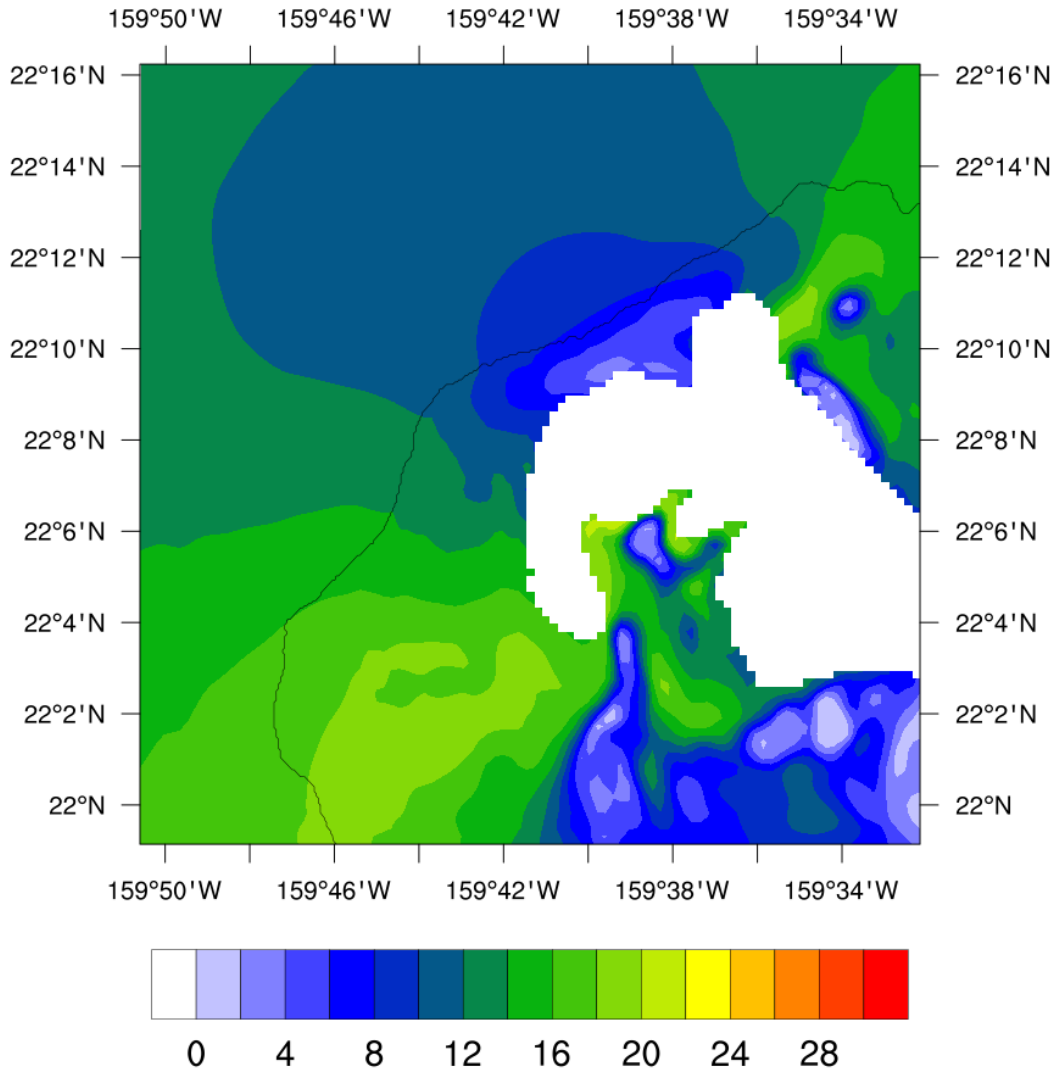
%





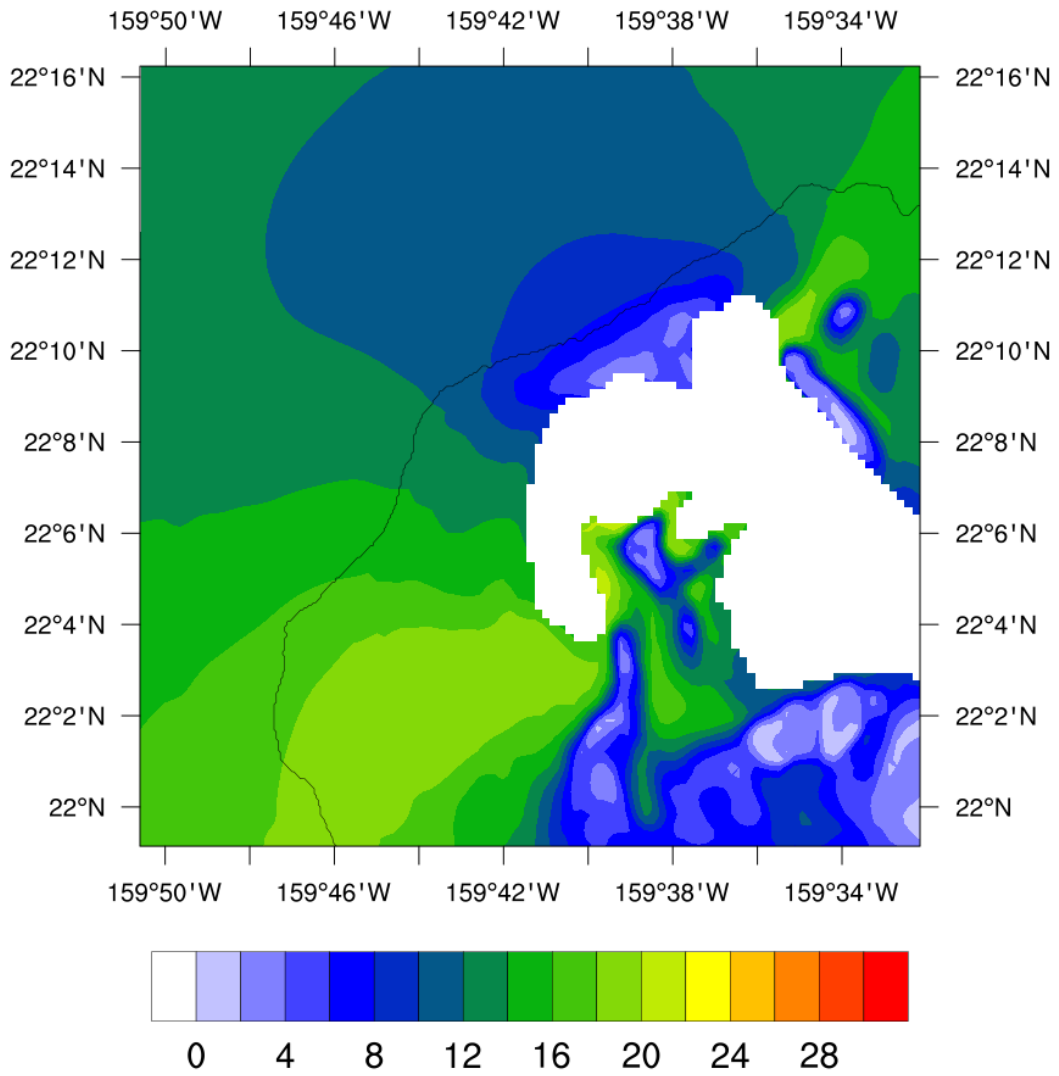
# Wind Speed

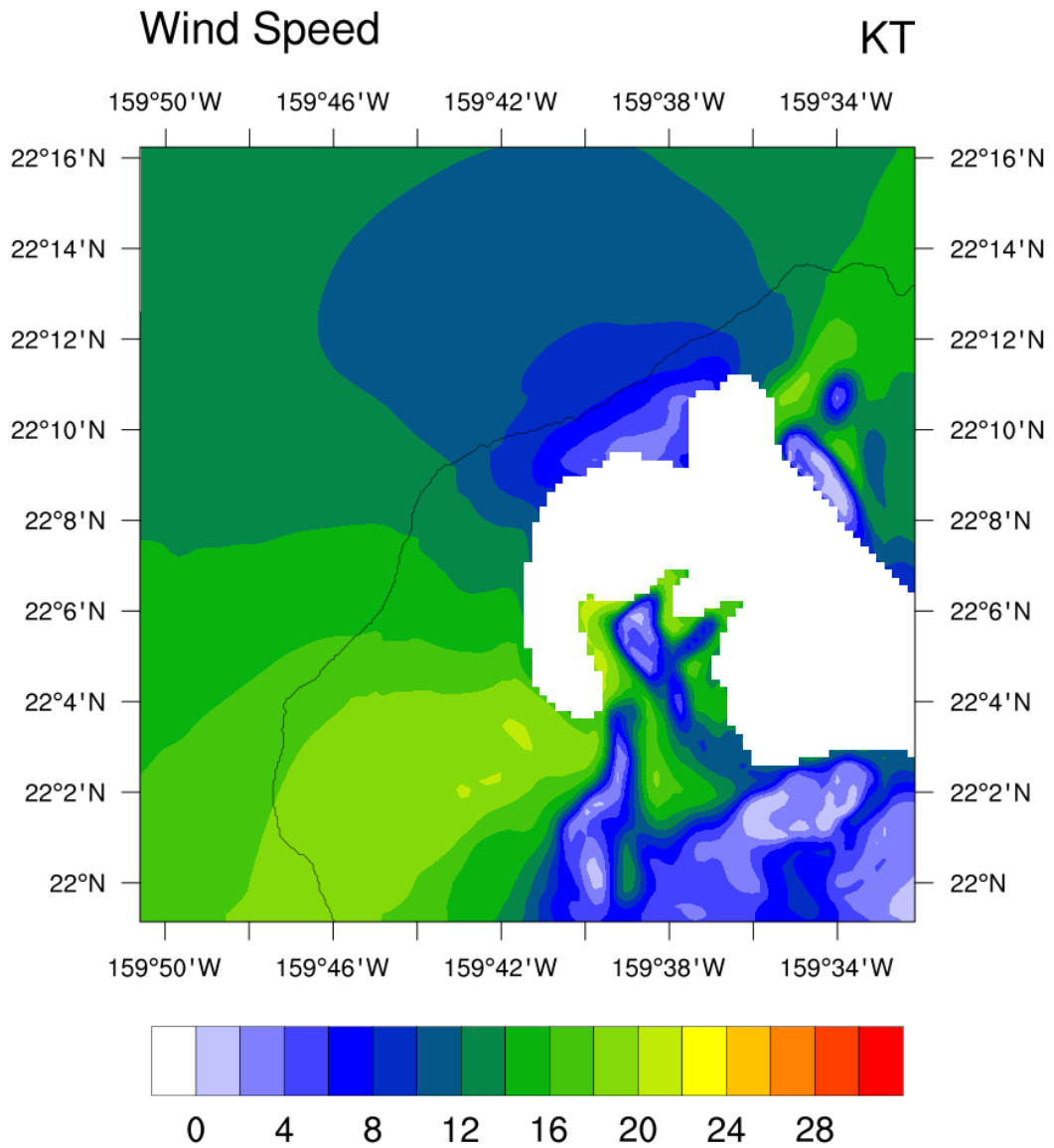
KT

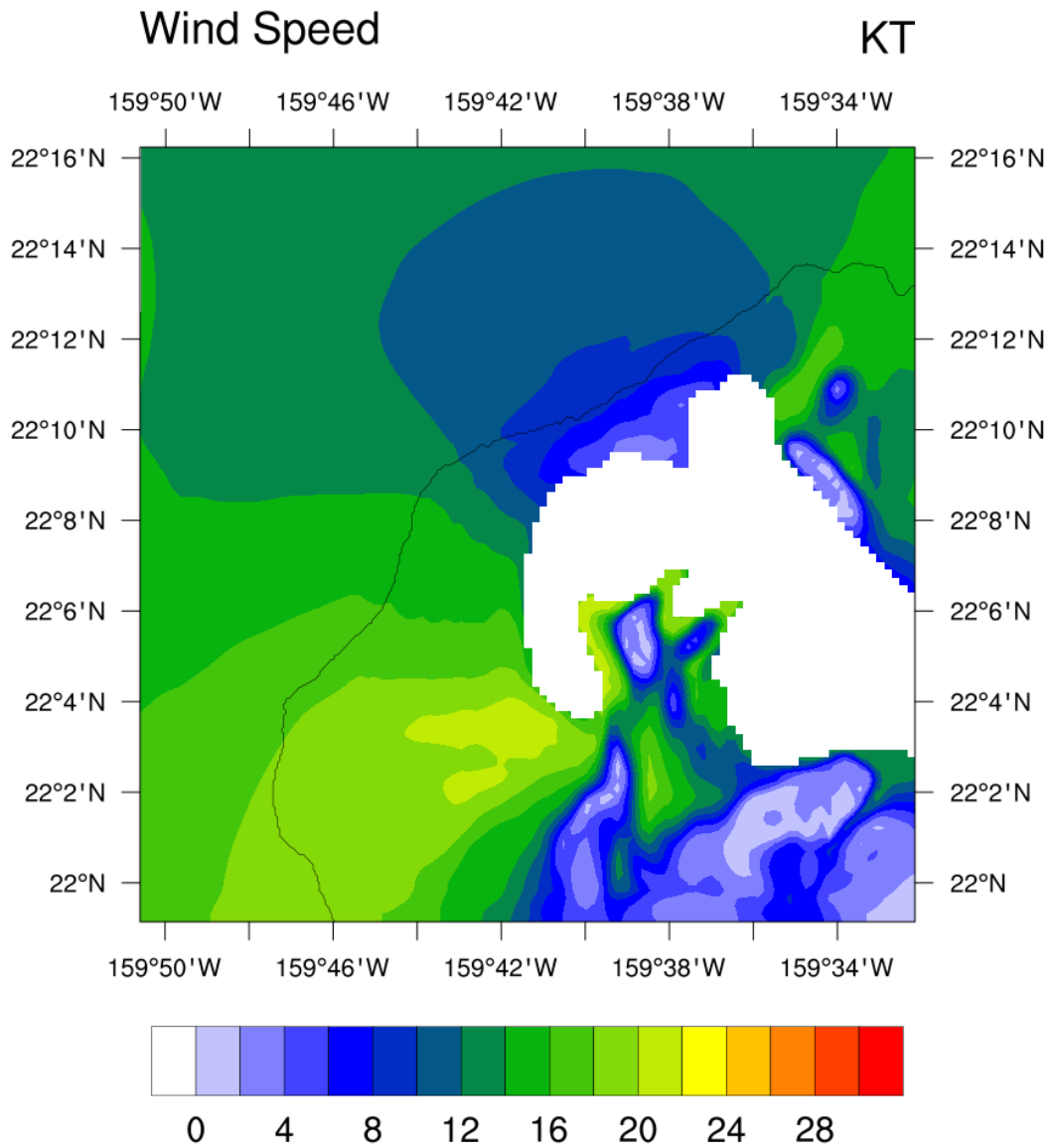


# Wind Speed

KT

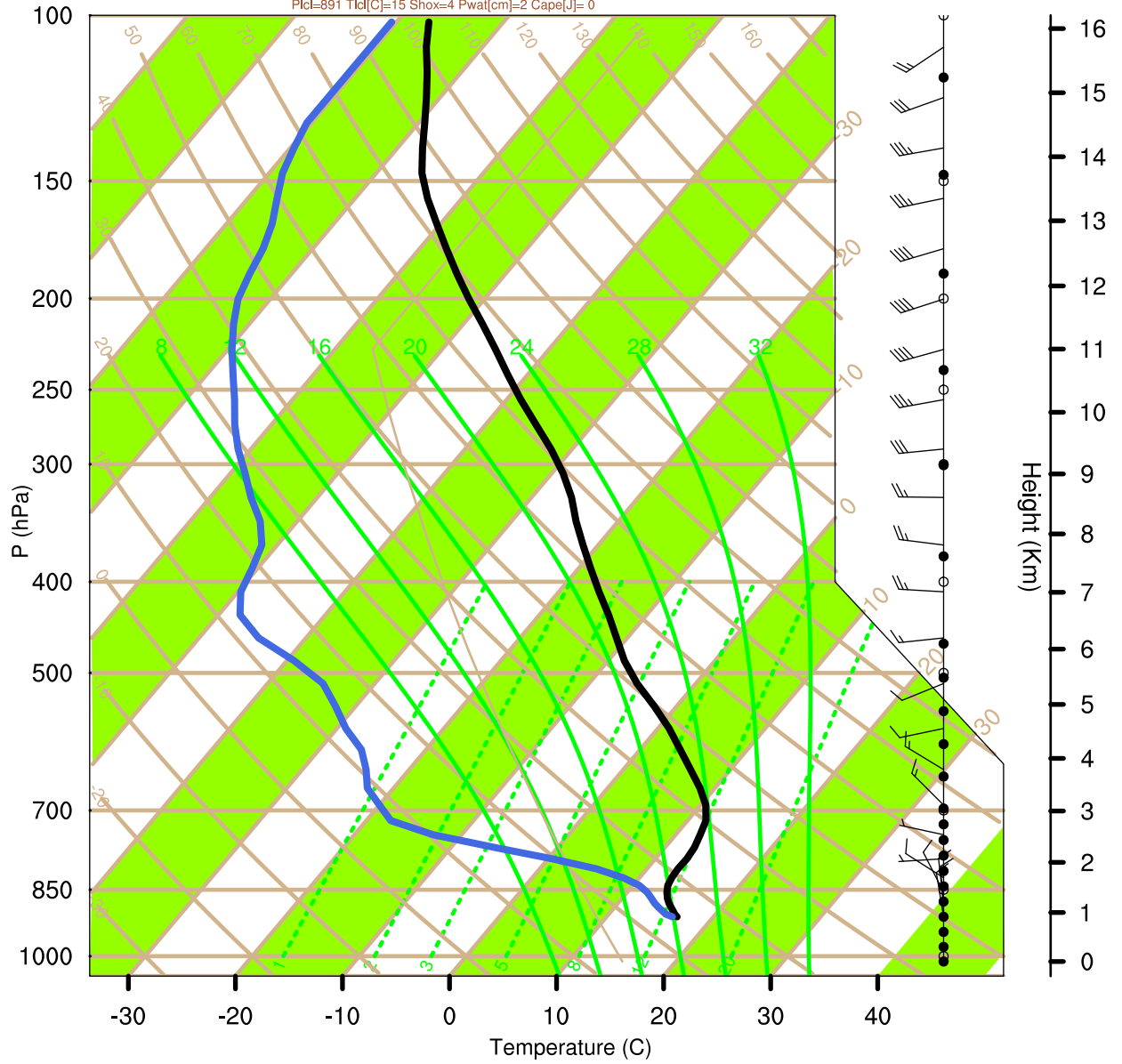






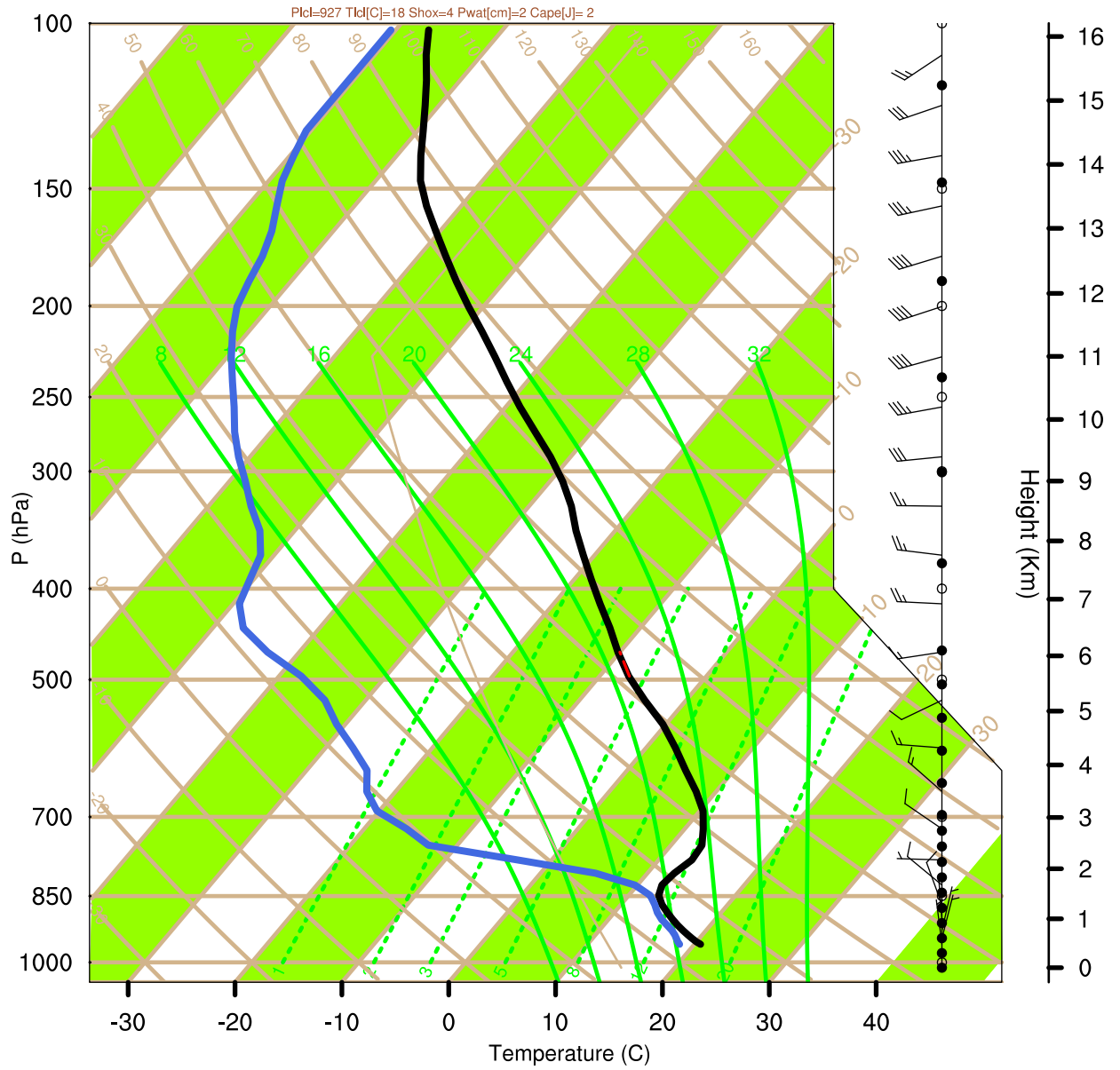
# Accident Site at 2019-12-27\_02:30:00

PfcI=891 Tld[C]=15 Shox=4 Pwat[cm]=2 Cape[J]= 0



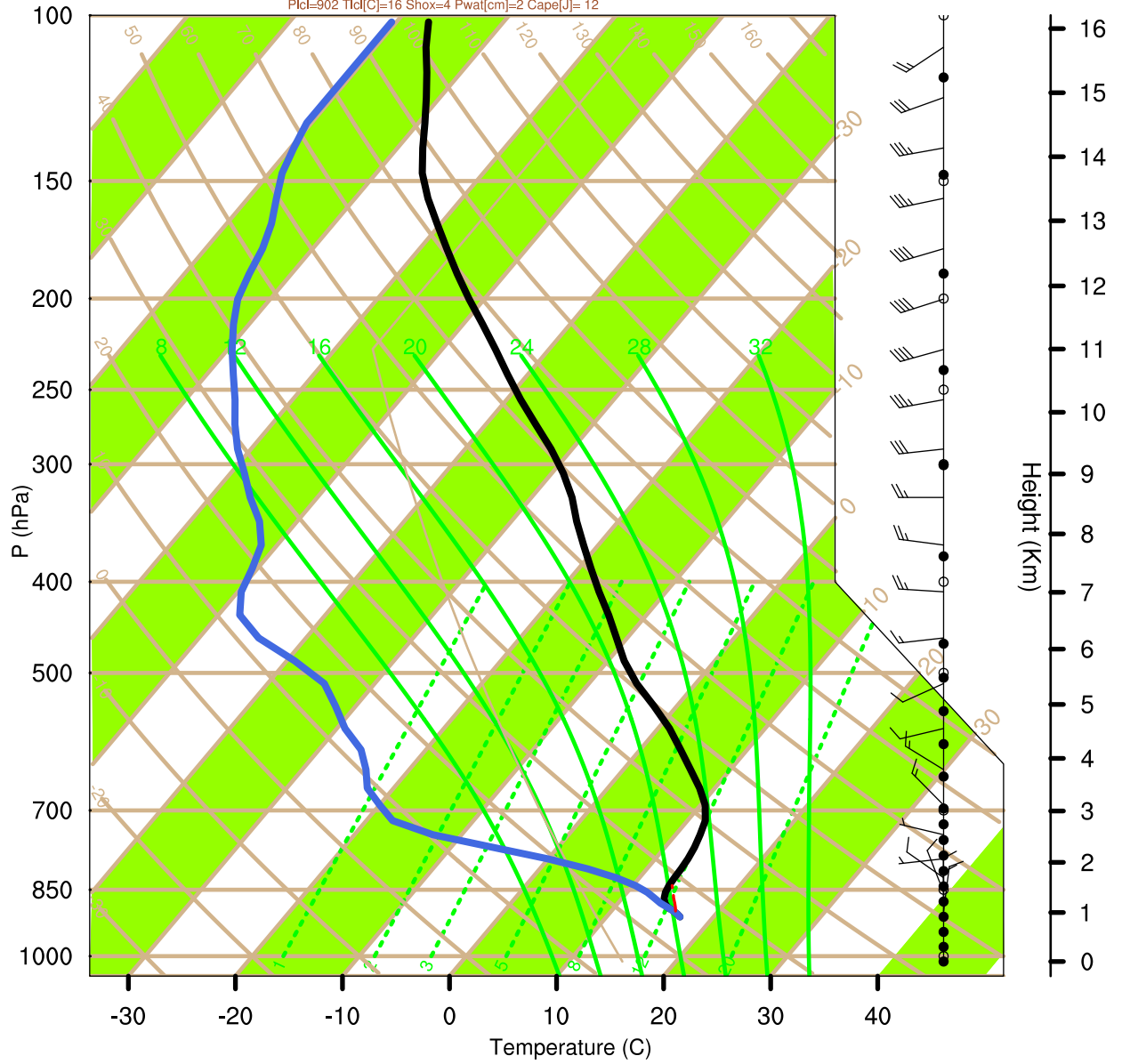


# N of Accident Site at 2019-12-27\_02:30:00



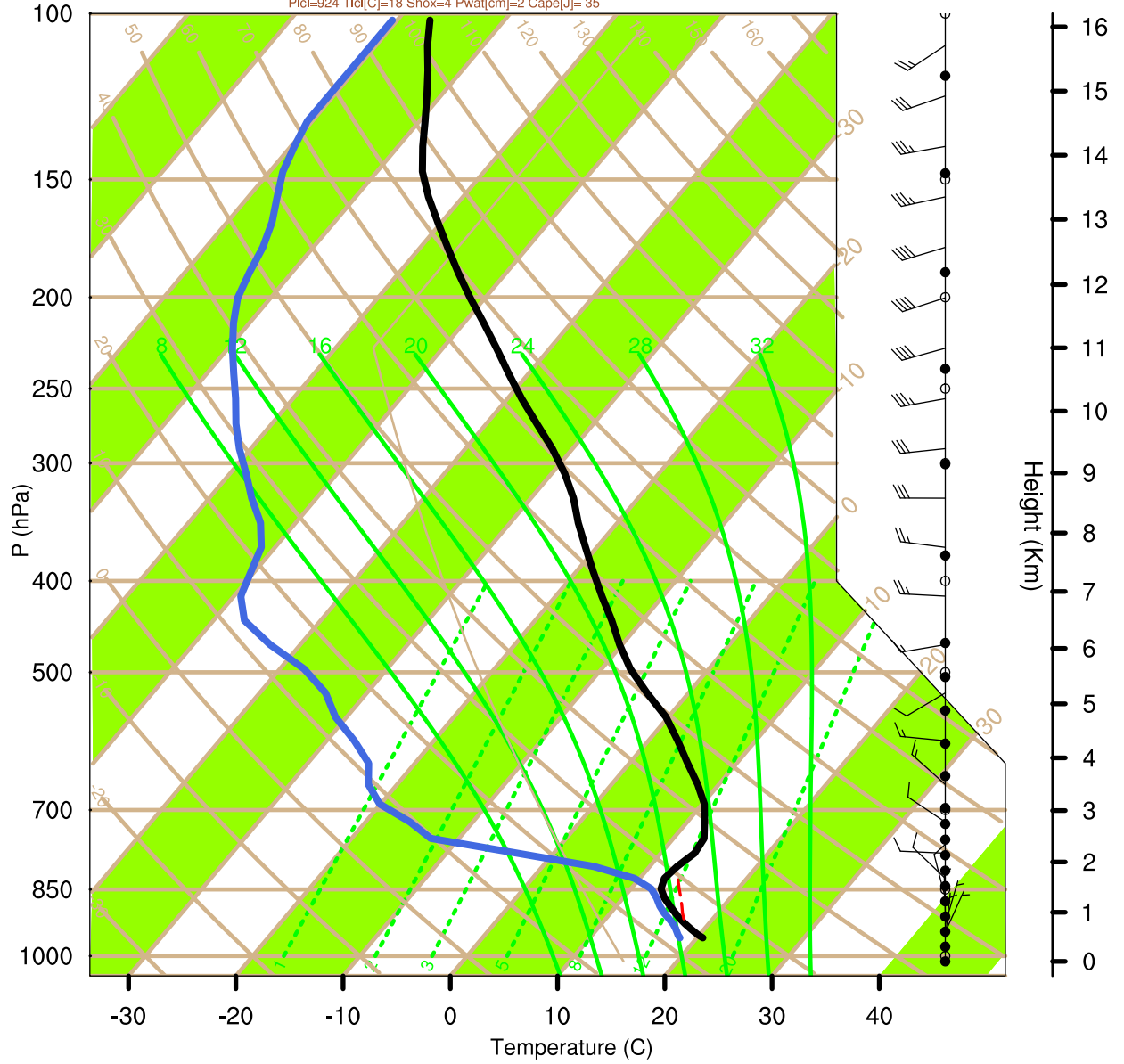
# Accident Site at 2019-12-27\_02:40:00

Plcl=902 Tlcl[C]=16 Shox=4 Pwat[cm]=2 Cape[J]= 12



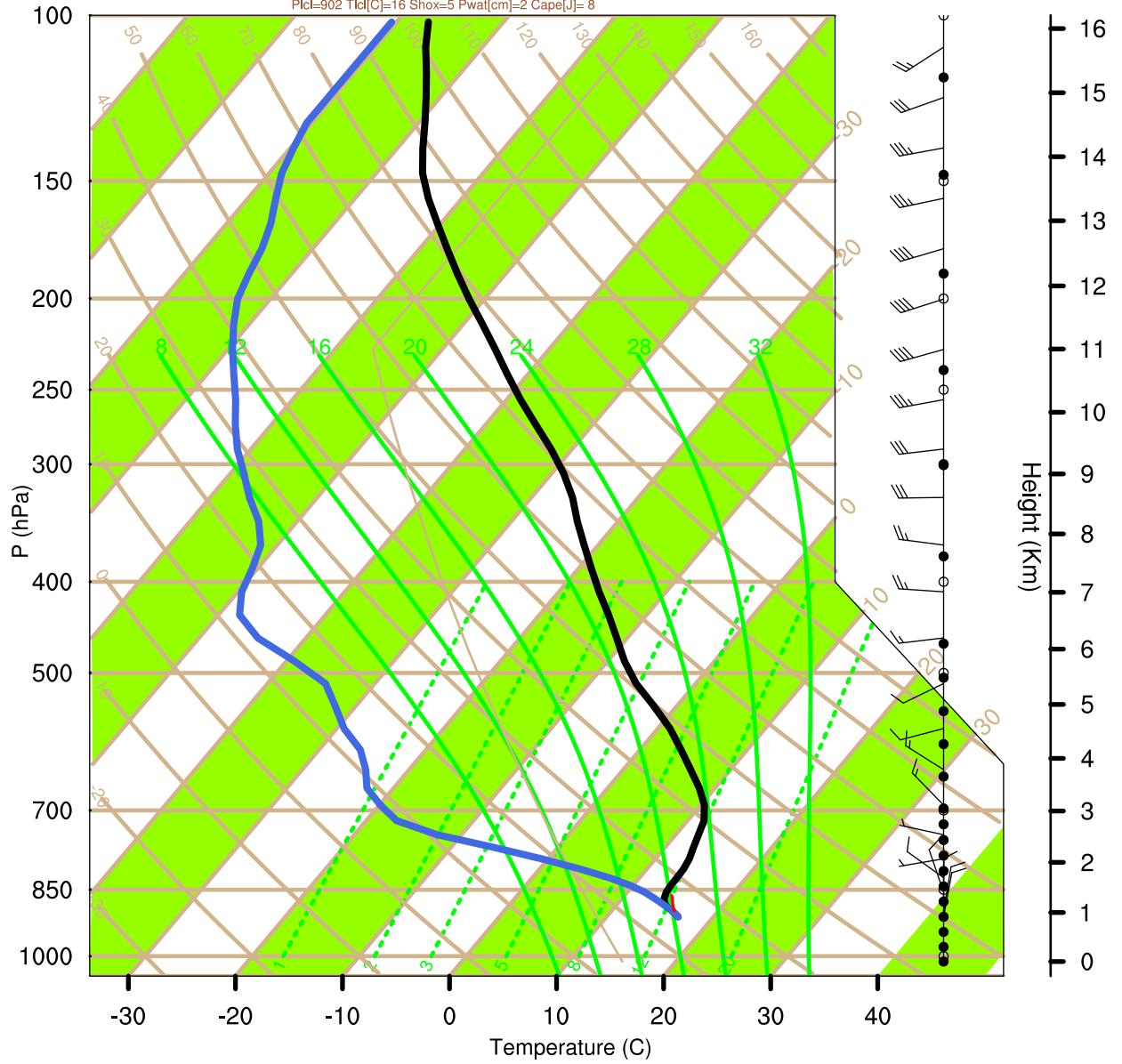
# N of Accident Site at 2019-12-27\_02:40:00

Plcl=924 Tlcl[C]=18 Shox=4 Pwat[cm]=2 Cape[J]=35



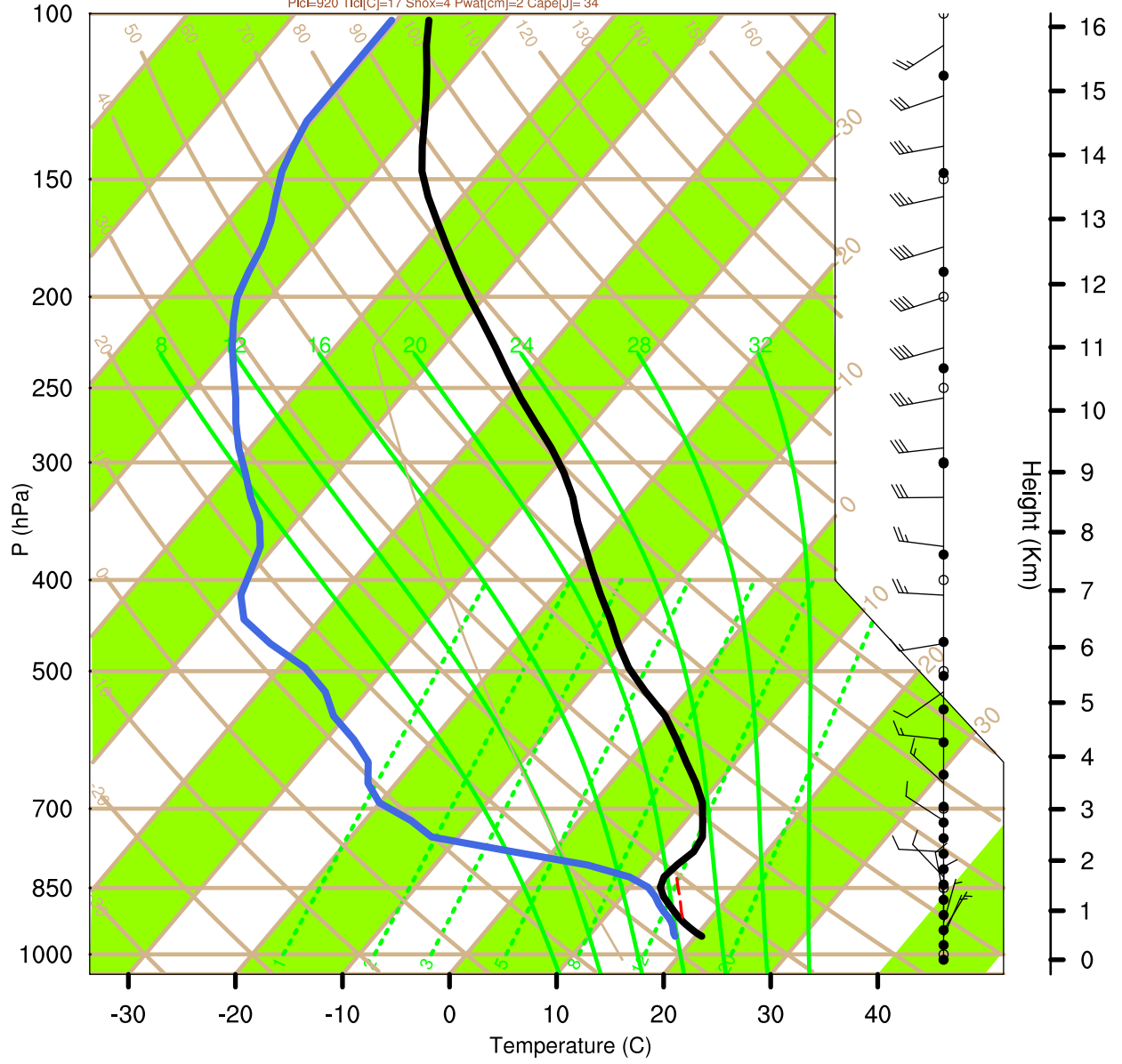
# Accident Site at 2019-12-27\_02:50:00

PfcI=902 Tld[C]=16 Shox=5 Pwat[cm]=2 Cape[J]= 8



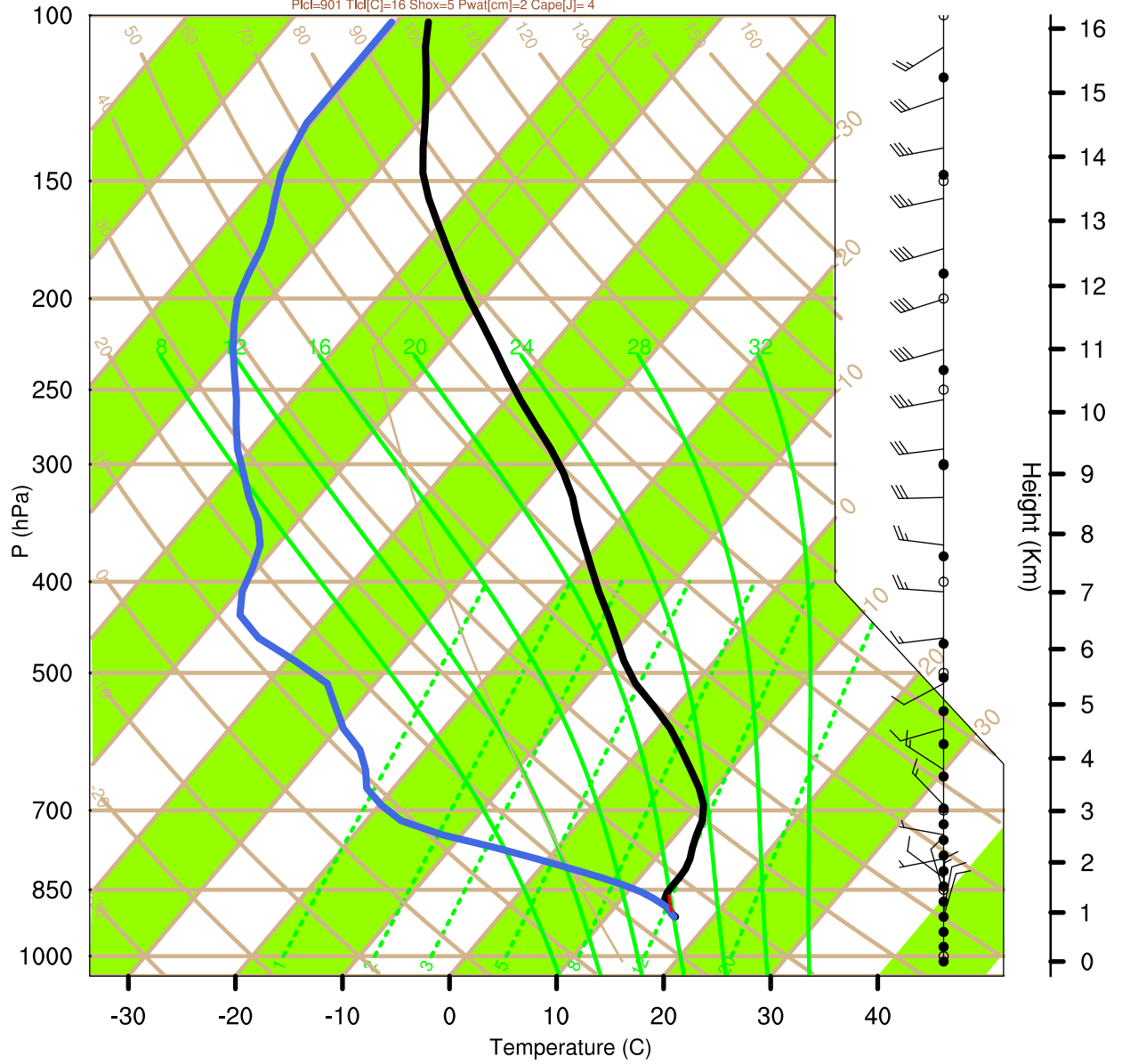
# N of Accident Site at 2019-12-27\_02:50:00

PlcL=920 Tlcl[C]=17 Shox=4 Pwat[cm]=2 Cape[J]= 34



# Accident Site at 2019-12-27\_03:00:00

PfcI=901 Tkl[C]=16 Shox=5 Pwat[cm]=2 Cape[J]= 4



# N of Accident Site at 2019-12-27\_03:00:00

Plcl=919 Tlcl[C]=17 Shox=4 Pwat[cm]=2 Cape[J]= 32

