



Vehicle Photos

**Cranbury, NJ
HWY14MH012**

(11 pages)



VEH Photo 1. Overall photograph of the 2011 Peterbilt combination unit, left front view.



VEH Photo 2. View of the broken right front axle leaf spring U-bolts on the 2011 Peterbilt truck-tractor.



VEH Photo 3. View of the left side engine compartment of the 2011 Peterbilt truck-tractor; the distorted leaf springs and U-bolts can be seen below the frame rail toward the bottom of the photograph.



VEH Photo 4. View from the underside of the 2011 Peterbilt truck-tractor, showing the front axle wheel alignment angles noted during the postcrash inspection.



VEH Photo 5. Preexisting left front leading edge damage on the 2003 Great Dane semitrailer.



VEH Photo 6. 2011 Peterbilt truck-tractor driver controls to the left of the steering wheel.



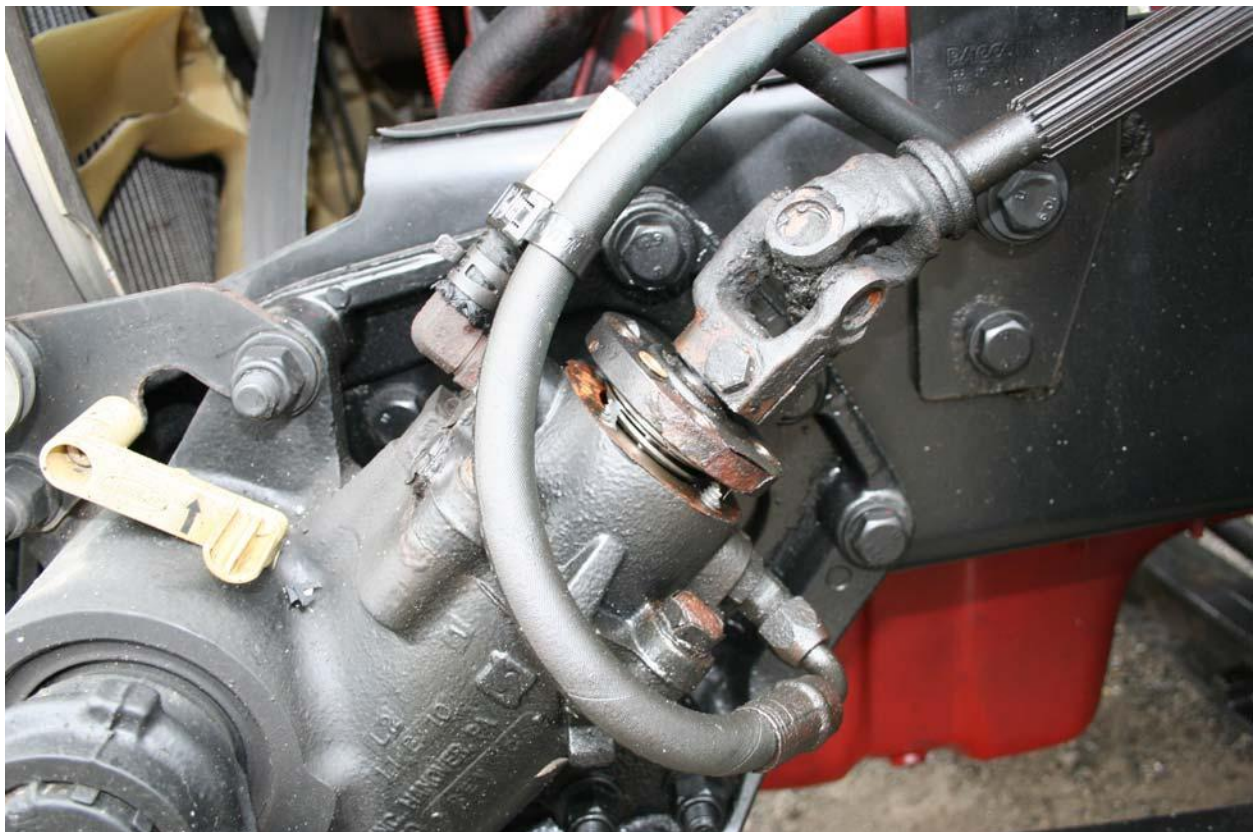
VEH Photo 7. 2011 Peterbilt truck-tractor driver controls to the right of the steering wheel.



VEH Photo 8. 2011 Peterbilt truck-tractor center dash gauges at postcrash key-on position.



VEH Photo 9. Left front axle tire of the 2011 Peterbilt truck-tractor, showing the area of tire tread scuffing and a 2-inch reference marker.



VEH Photo 10. Showing the damaged input shaft connection into the steering gear box and sheared bolts at the input bearing cap.



VEH Photo 11. Showing damaged Bendix radar module on the front bumper of the 2011 Peterbilt truck-tractor.



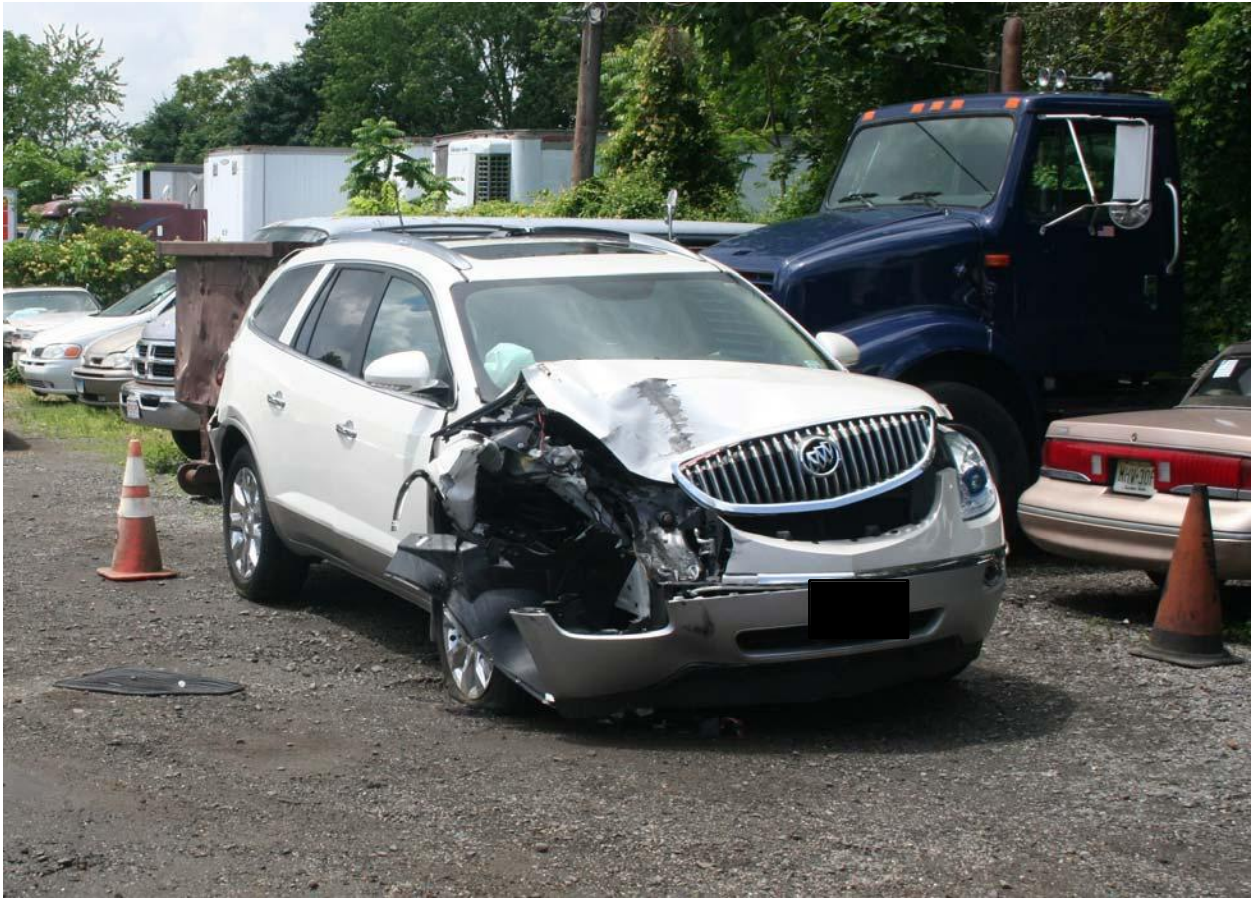
VEH Photo 12. Showing postcrash Bendix display unit and error message in the cab of the 2011 Peterbilt truck-tractor.



VEH Photo 13. 2012 Mercedes-Benz Sprinter van, view of left rear corner damage.



VEH Photo 14. Showing the deflated left rear tire and left rear wheel damage in contact with the crushed-in rear portion of the van.



VEH Photo 15. 2011 Buick Enclave, showing right front corner damage.



VEH Photo 16. 2011 Buick Enclave, showing rear damage.



VEH Photo 17. 2011 Ford F-150, showing rear damage.



VEH Photo 18. 2005 Nissan Altima, showing left rear corner damage.



VEH Photo 19. 2006 Freightliner combination unit, showing damage to the left side of the truck-tractor.