



**VEHICLE FACTORS GROUP CHAIRMAN'S FACTUAL REPORT
ATTACHMENT**

Vehicle Photographs

Bryce Canyon City, Utah

HWY19MH012

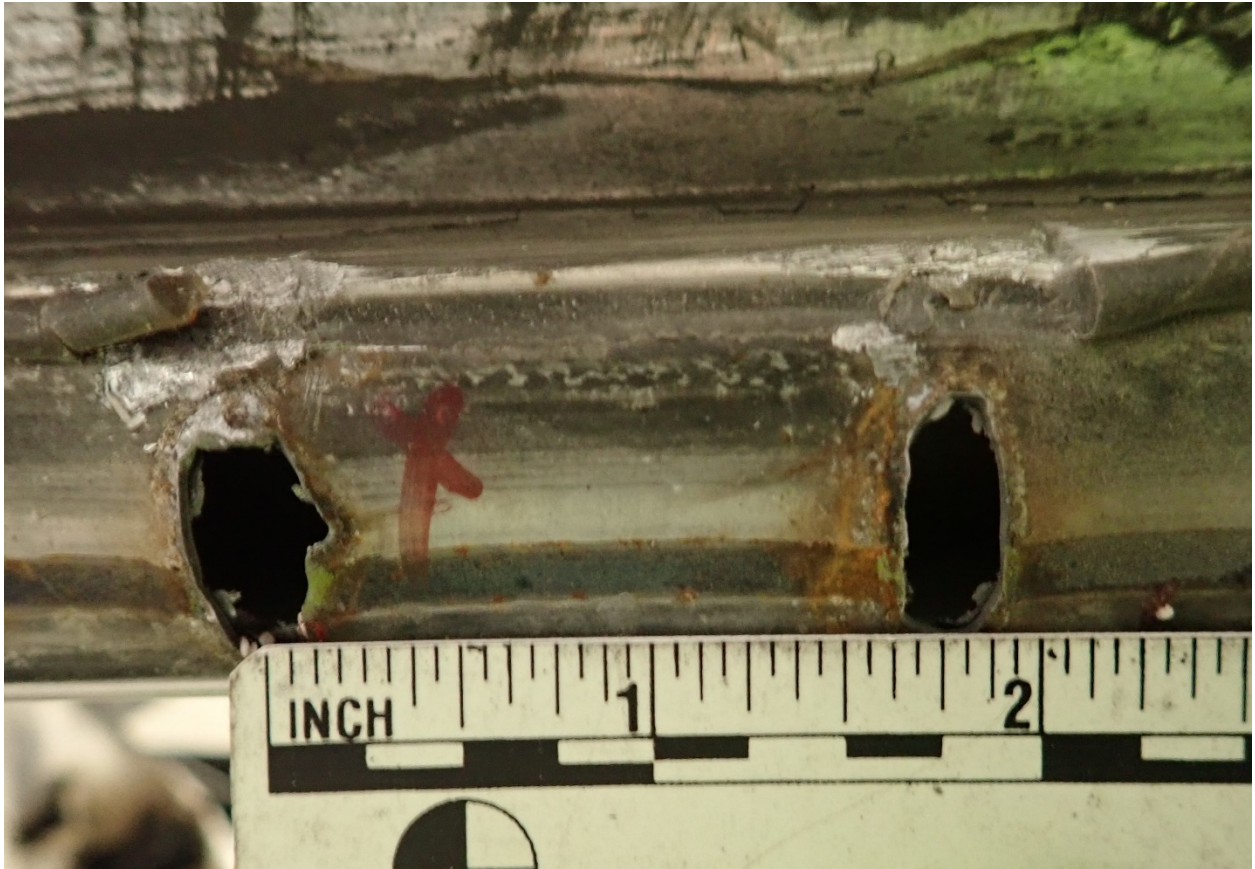
(5 Photographs)



View of damage to Freightliner as photographed from the left front corner



View of the damage to the right side of the Freightliner as photographed from the right front corner



Roof bow weld area on sidewall frame showing where material pulled away at weld



Roof bow showing weld with attached frame material



View of the damage to the roof structure as seen from front to rear