



**VEHICLE FACTORS PHOTOGRAPHS**

**Mount Pleasant, Pennsylvania**

**HWY20MH002**

(12 pages)

**Photograph 1:** Looking at the damage sustained to the front of the 2005 Van Hool motorcoach.

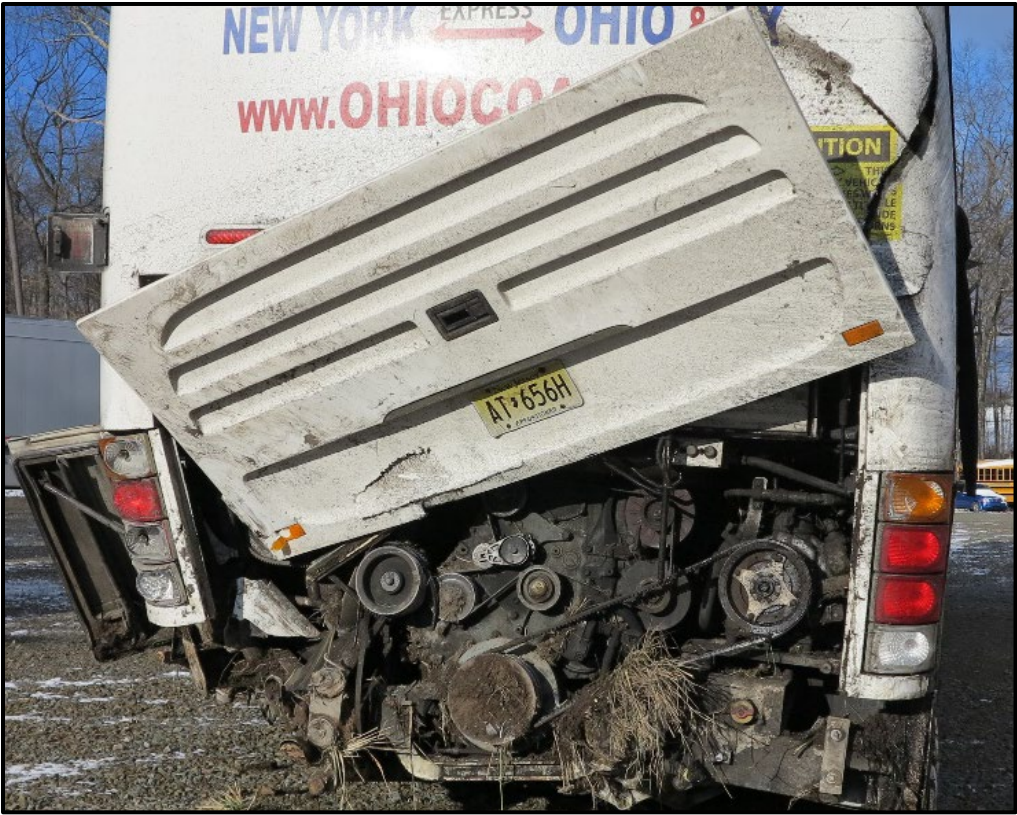


**Photograph 2:** A closer view of the front of the 2005 Van Hool motorcoach – notice the driver's seat.





**Photograph 3:** Looking at the engine located at the rear of the 2005 Van Hool motorcoach.



**Photograph 4:** A view of the right-rear corner of the 2005 Van Hool motorcoach





**Photograph 5:** The recovered steering components, dash, and stairwell from the 2005 Van Hool motorcoach.



**Photograph 6:** A view of the accelerator and brake pedals from the 2005 Van Hool motorcoach.





**Photograph 7:** A view of the damage to the right front of the 2018 FedEx truck-tractor.



**Photograph 8:** Looking at the rear of the 2018 FedEx truck-tractor and displaced cab.





**Photograph 9:** The displaced 5<sup>th</sup> wheel of the 2018 FedEx truck-tractor.



**Photograph 10:** Looking at the trapped brake and accelerator pedals of the 2018 FedEx truck-tractor.





**Photograph 11:** Looking at the damage to the bumper from the 2019 Hyundai semitrailer.



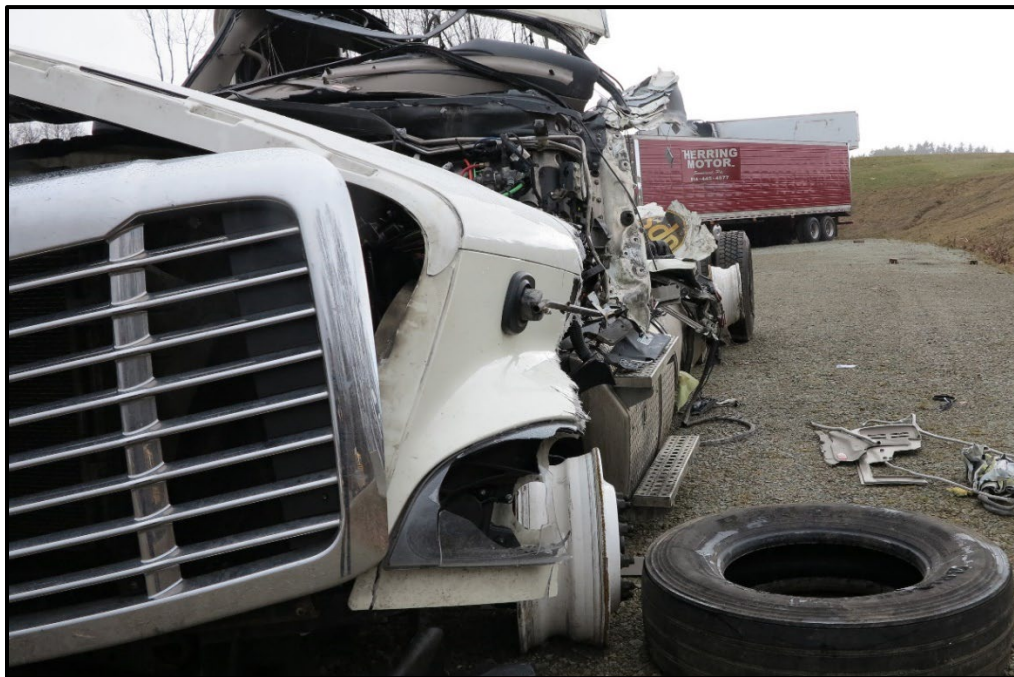
**Photograph 12:** Looking at the damage to the steel frame from above the cargo doors on the 2019 Hyundai semitrailer.



**Photograph 13:** Looking at the right-rear corner of the 2019 Hyundai semitrailer



**Photograph 14:** A view looking from the front bumper toward the rear drive axle along the left side of the UPS #1 2018 Freightliner.





**Photograph 15:** A view of the damage sustained to the left side of the cab and sleeper berth of the UPS #1 2018 Freightliner.



**Photograph 16:** This is a view of the displaced steering wheel and damaged instrument panel from the UPS #1 2018 Freightliner.



**Photograph 17:** A view of the left-front corner of the 2018 Stoughton semitrailer that had been connected the UPS #1 Freightliner.



**Photograph 18:** Looking at the damage sustained to the forward section on the left side of the 2018 Stoughton semitrailer





**Photograph 19:** A view of the crease that is on the hood and roof of the 2007 Mercedes.



**Photograph 20:** A view of the damage sustained to the right-rear of the 2007 Mercedes.



**Photograph 21:** A view of the damage sustained to the left side of the UPS #2 2018 Freightliner.



**Photograph 22:** A closer look at the damage to the left-side fuel tank mounted on the UPS #2 2018 Freightliner.

