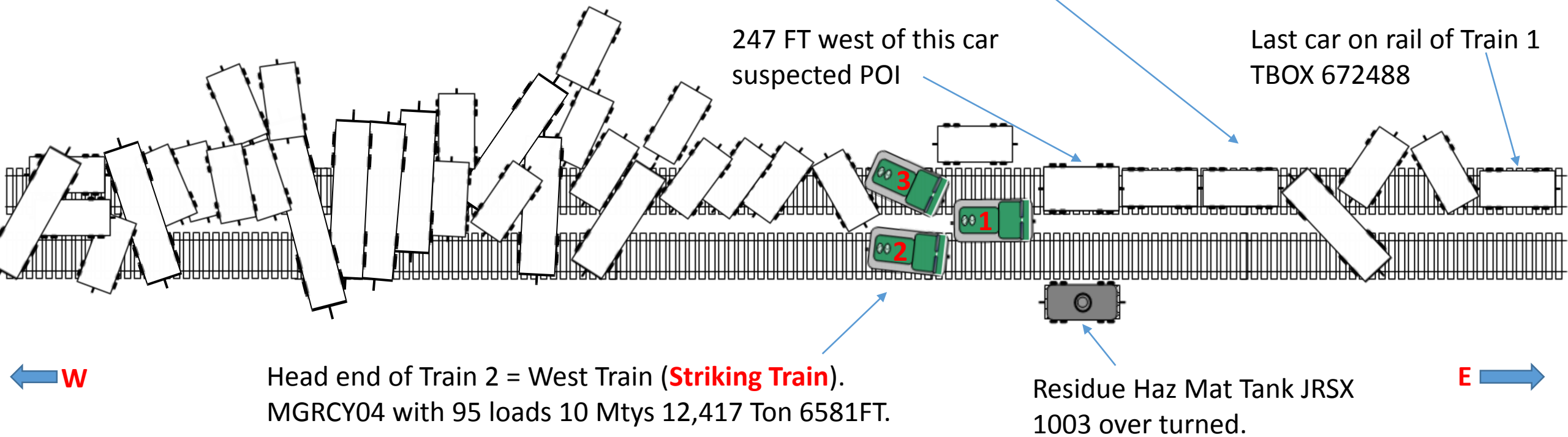


Track Speed Freight 55 MPH
CTC. Between MP 527.0 &
527.5 UP Laramie Sub.

Rear end of Train 1 = East Train stopped MPCNP03
90 loads 67 Mtys 13,474 Ton 10, 103 FT
DP 2x1 with Middle of train DP unit UP 9008.



247 FT west of this car
suspected POI

Last car on rail of Train 1
TBOX 672488

Head end of Train 2 = West Train (**Striking Train**).
MGRCY04 with 95 loads 10 Mtys 12,417 Ton 6581FT.

Residue Haz Mat Tank JRSX
1003 over turned.

Frontage Road North of I80 between Mile Marker 343 & 345. 345 being east

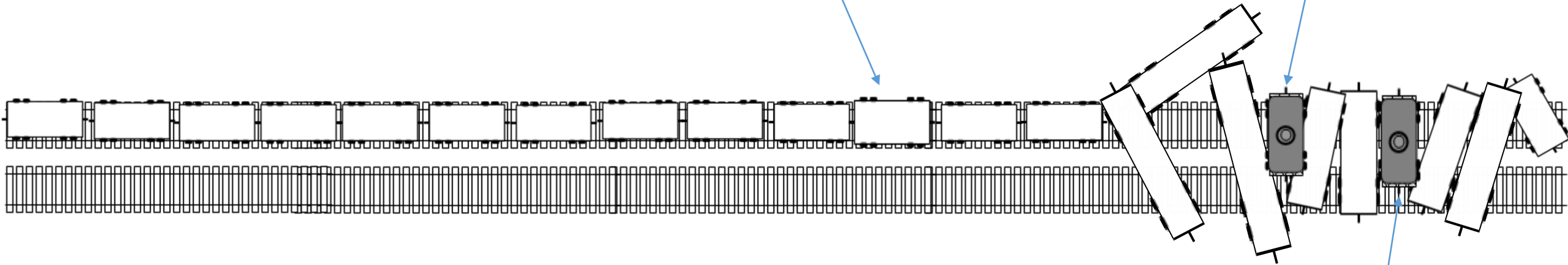
*** Not to scale**

Track Speed Freight 55 MPH



First car west of derailment still on the rail. UP 95179

HAZ MAT Tank JRSX 11149 On Side



← W

E →

HAZ MAT Tank JRSX 10234

* Not to scale