

Corporate Airlines, Inc.
Kirksville, Missouri
October 19, 2004
DCA05MA004

National Transportation Safety Board
Washington, DC

Attachment 2

Photographs

7 Pages



1. View of the main wreckage

Note: The nose of the airplane is in the foreground and the tail of the airplane in the background of the photograph.



2. View of the wreckage with an arrow pointing to the aft pressure bulkhead that had rolled onto it's left side.



3. View of a crewmember control yoke found near the main wreckage.



4. View of the main wreckage with the horizontal stabilizer and tail of the airplane in the foreground of the photograph.



5. View of the aft pressure bulkhead that was found resting on its left side.



6. View of the aft fuselage and the main entry door that were found resting against the wet ground.



7. View of the main entry door's latching mechanism found in the latched position.



8. View of the seatbelt buckle pieces that were found in the burned and charred cockpit and cabin wreckage.



9. View of two seatbelt buckles that were found in the latched position.



10. View of a crewmember seatbelt buckle and a shoulder harness adjustment bracket that were recovered near the cockpit area of the wreckage.



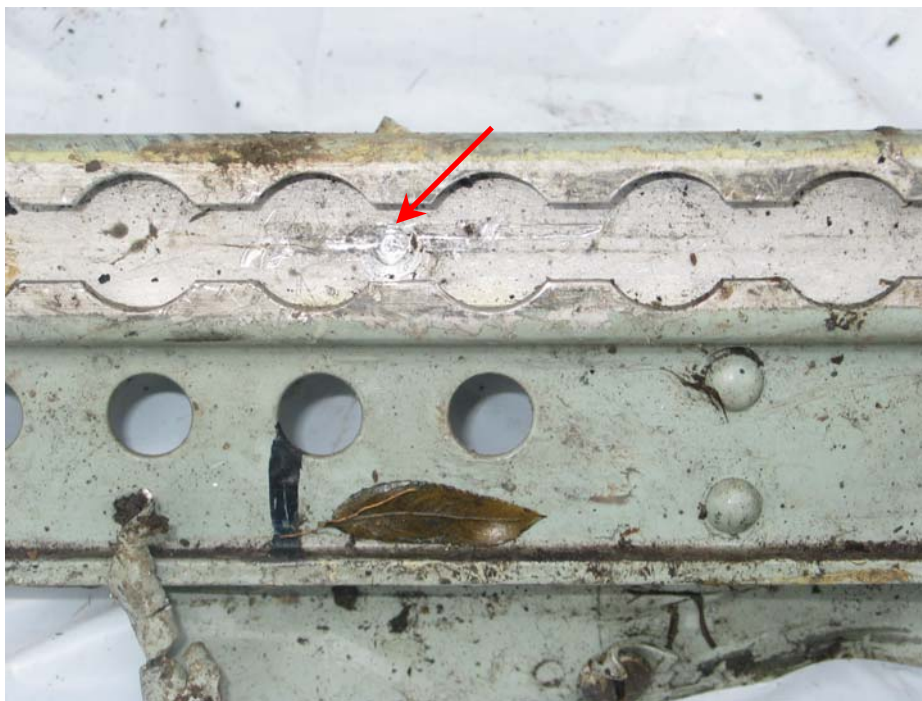
11. View of the Captain's seat that was found in the cockpit wreckage.



12. View of a forward seat attachment found installed to a section of warped and charred seat track.



13. View of a bent and distorted seat frame that was recovered near the burned cabin wreckage.



14. View of an unburned section of seat track found near the main wreckage.
Note: The arrow points to an indentation in the track where a seat fitting had been secured to the track.