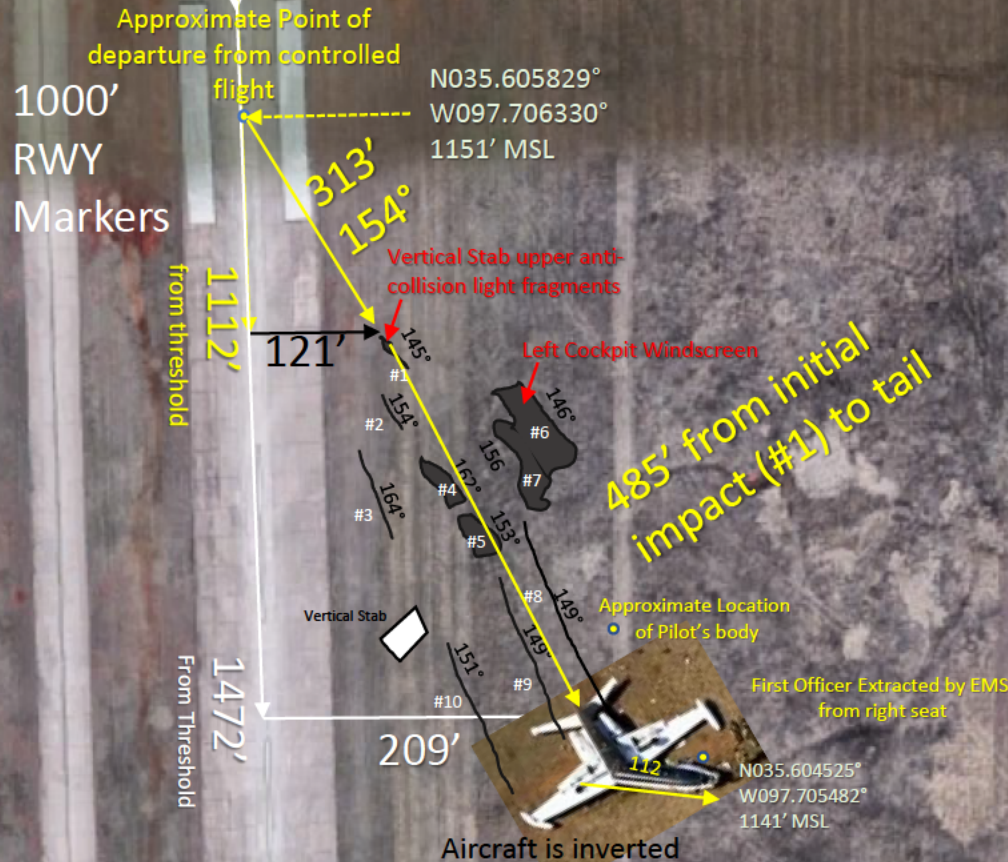
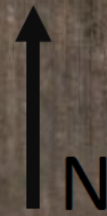


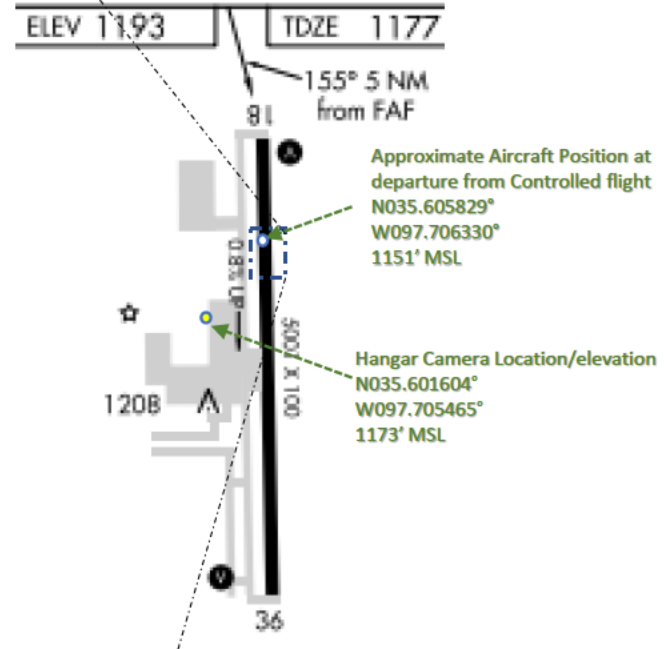
RWY 18  
175°

Notes:

- GPS locations = ●
- All degrees Magnetic
- All depicted impact marks and drawn locations are approximate



Accident Site Diagram  
CEN19FA104  
N4MH WW24, Sundance Airport (KHSD) Yukon, OK  
18 March, 2019



Number	Length	Width (Max)	Depth (Max)	Comment
1	15'6"	1'7"	8"	Fragments of Upper (vertical Stab mounted )Anti-collision
2	5'8"	1'7"	2"	Shallow
3	23'5"	2'6"	2"	Shallow
4	6'11"	1'7"	4"	
5	7'6"	3'6"	6"	
6	31' 5"	9'	10"	LH Windscreen Location
7	21'	5'11"	11"	Deepest gouge
8	129'7"	11"	<1"	Shallow Grass rub - lines up with RH Engine - 6' 6" from #8-#9
9	92'2"	11"	<1"	Shallow Grass rub - lines up with LH Engine
10	44'8"	13"	<1"	Shallow Grass rub - lines up with LH Tip tank - 8' from #9-#10