

# National Transportation Safety Board

Office of Aviation Safety

Washington, DC 20594



ANC23FA008

## **SEARCH AND RECOVERY**

Group Chair's Factual Report  
Attachment 1 - Points of Interest

May 8, 2023

# POST-INVESTIGATION ID-SHEET-PROJECT 104669 KING AIR

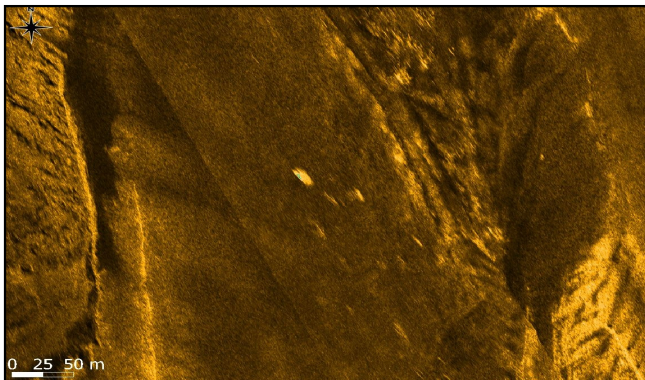
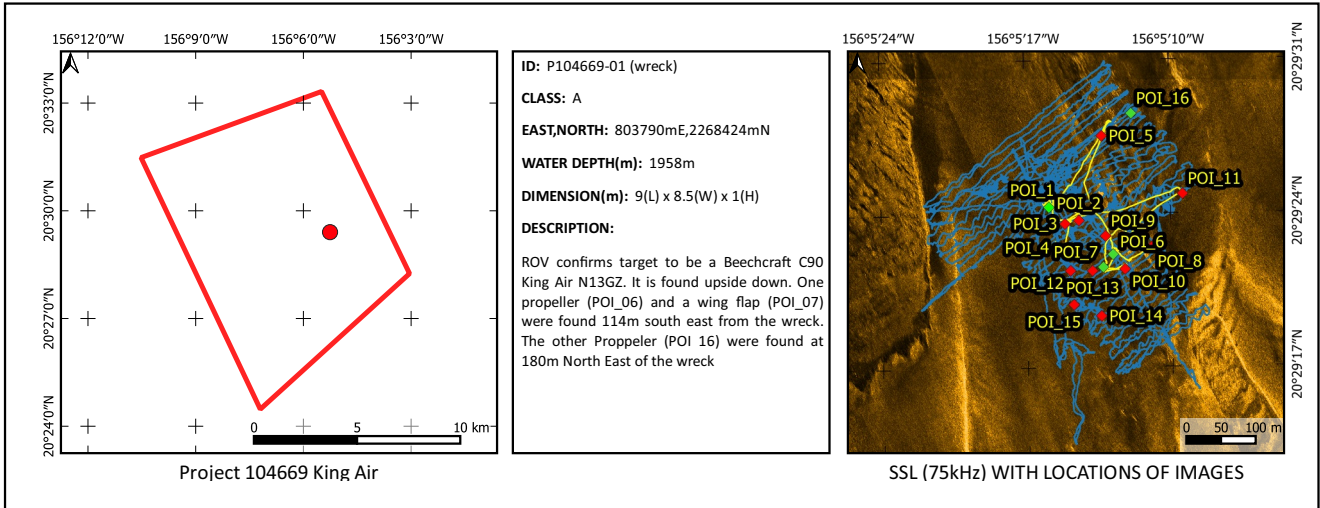


FIGURE 1: Wreckage echo on SSS (75KHz)

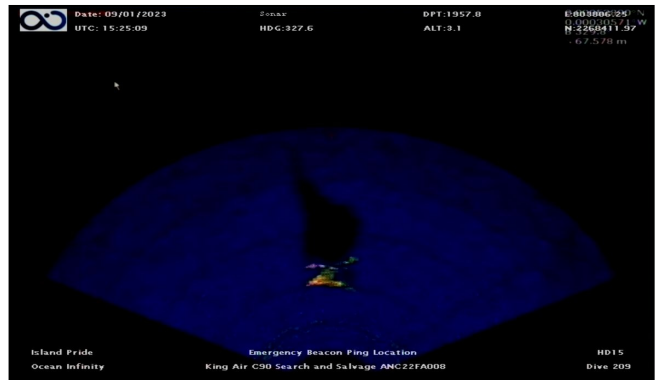


FIGURE 2: Wreckage echo on ROV forward looking sonar

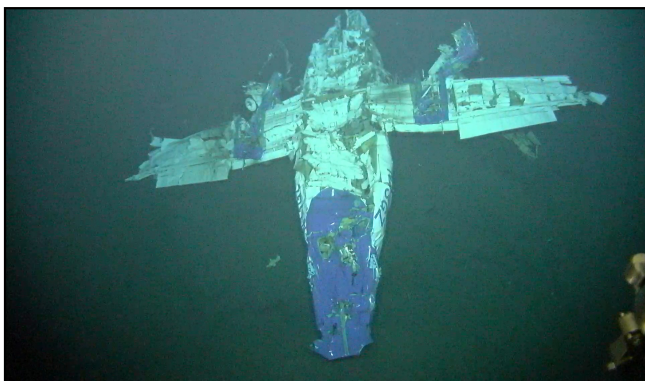


FIGURE 3: POI\_01 Overview of wreck



FIGURE 4: Aircraft tail



FIGURE 5: Starboard wing



FIGURE 6: Port wing



AUTHOR: ISLAND PRIDE OFFLINE  
 CHECKED BY: J-C Caillens  
 APPROVED BY: J-C Caillens  
 DATE: 01/07/2020

COORDINATE SYSTEM: WGS 1984 UTM 4N  
 PROJECTION: TRANSVERSE MERCATOR



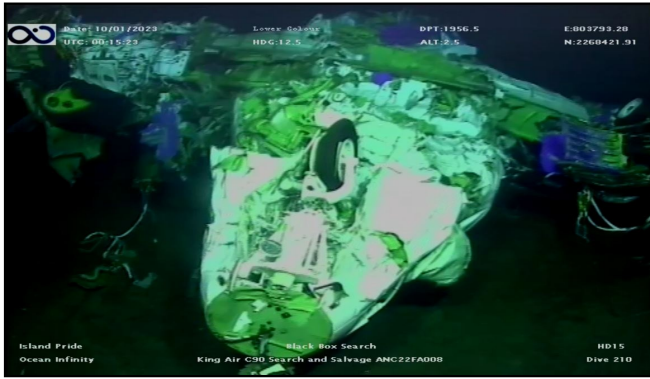


FIGURE 7: Aircraft nose



FIGURE 8: Black box identification in tail section

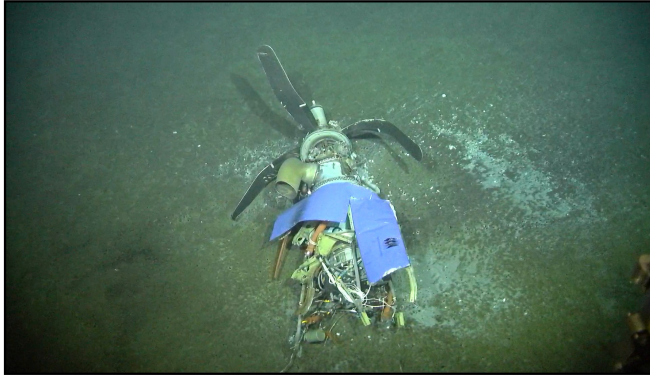


FIGURE 9: POI\_06 Propeller found 114m southeast of wreck

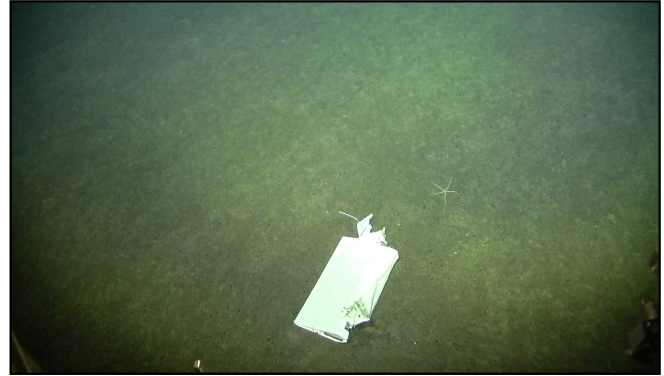


FIGURE 10: POI\_07 Wing Flap found 114m southeast of wreck



FIGURE 11: POI\_02 geology



FIGURE 12: POI\_03 geology



FIGURE 13: POI\_04 geology



FIGURE 14: POI\_05 geology



FIGURE 15: POI\_08 geology



FIGURE 16: POI\_09 geology



FIGURE 17: POI\_10 geology

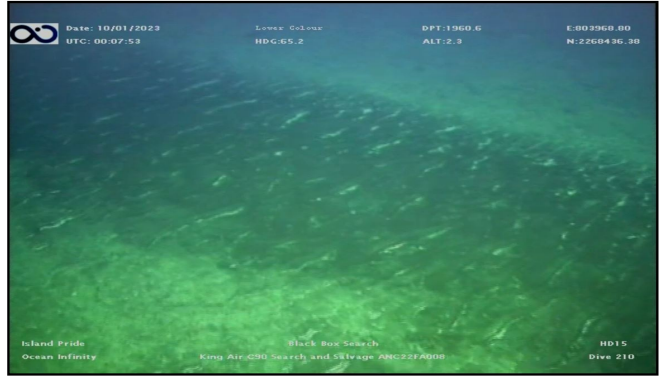


FIGURE 18: POI\_11 geology



FIGURE 19: POI\_12 geology



FIGURE 20: POI\_13 geology



FIGURE 21: POI\_14 geology

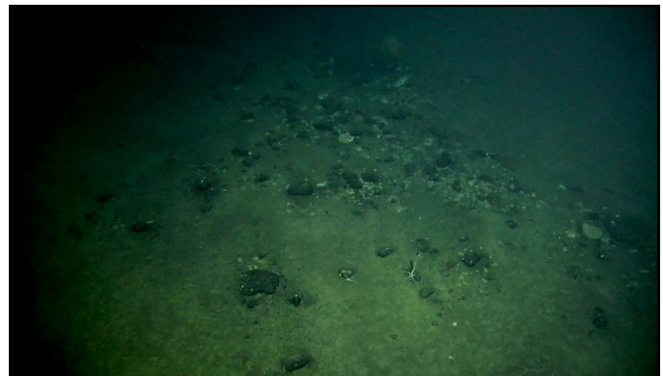


FIGURE 22: POI\_15 geology





FIGURE 15: POI\_16 Propeller found at 180m North east of the wreck

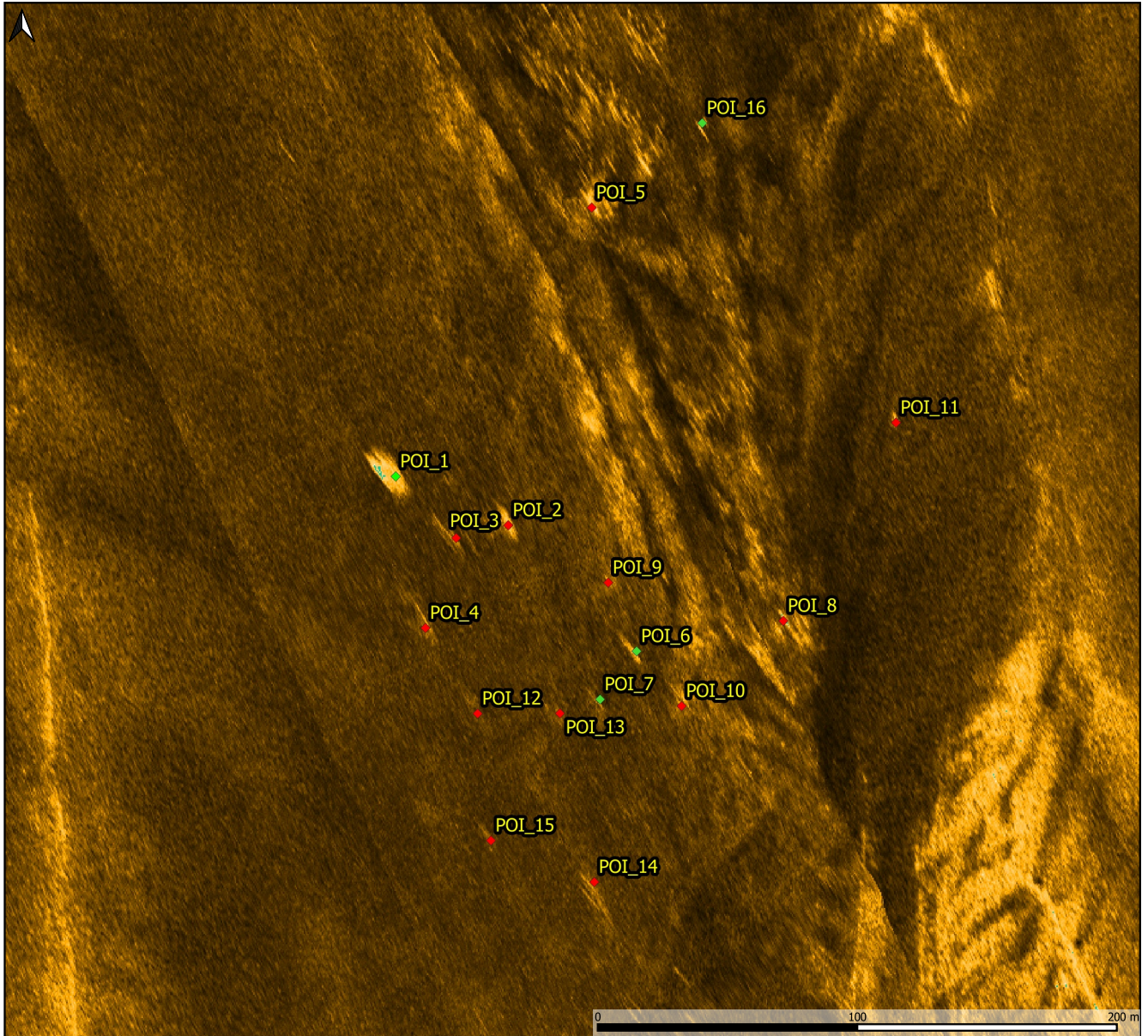


FIGURE 19: Overview map of the different POI