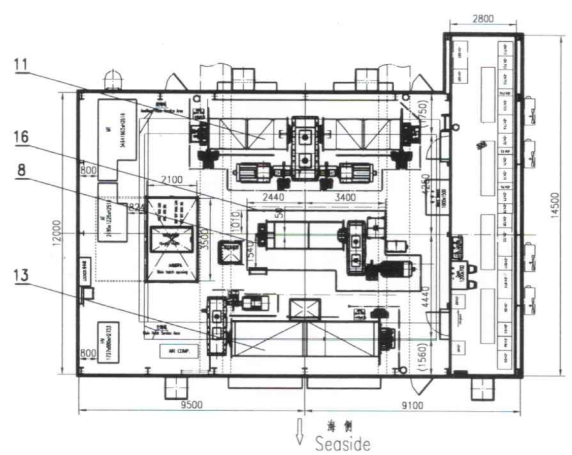
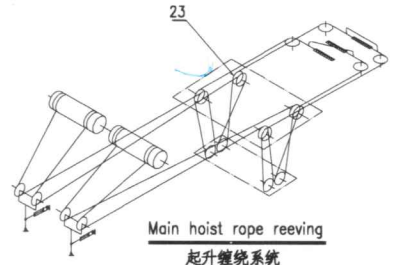
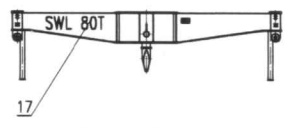
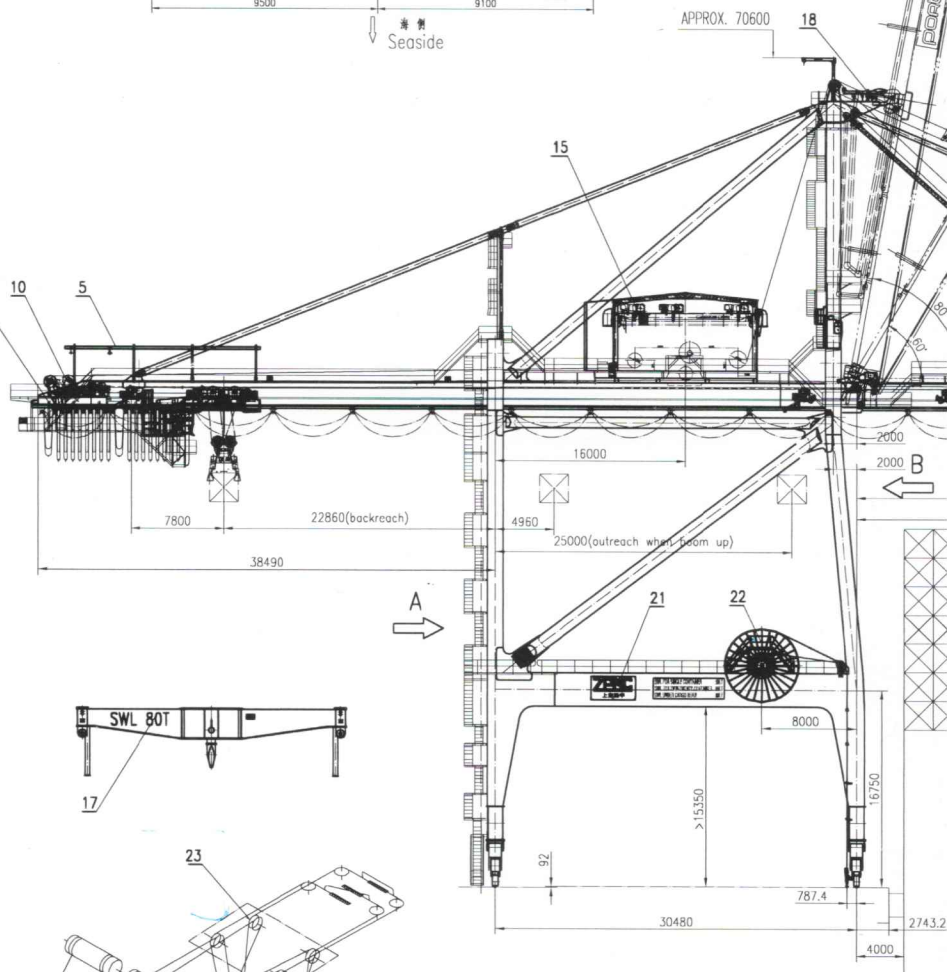
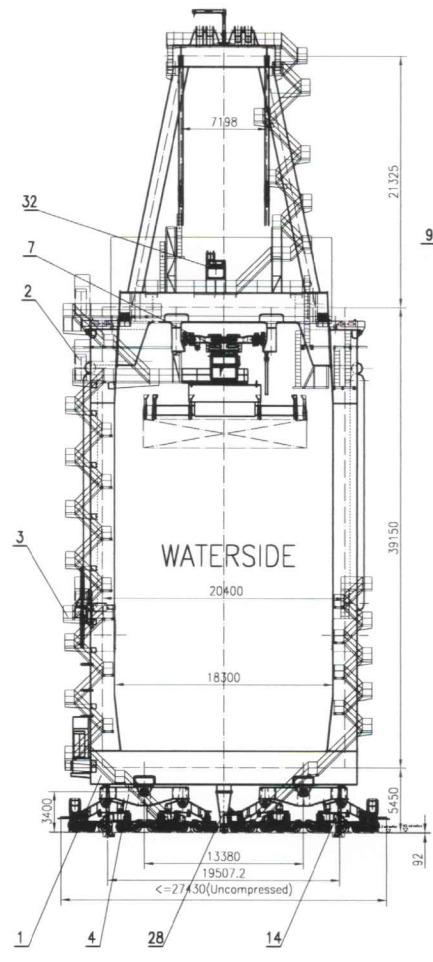


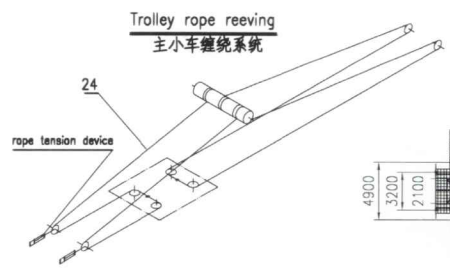
Boom hoist rope reeving
俯仰绕绳系统



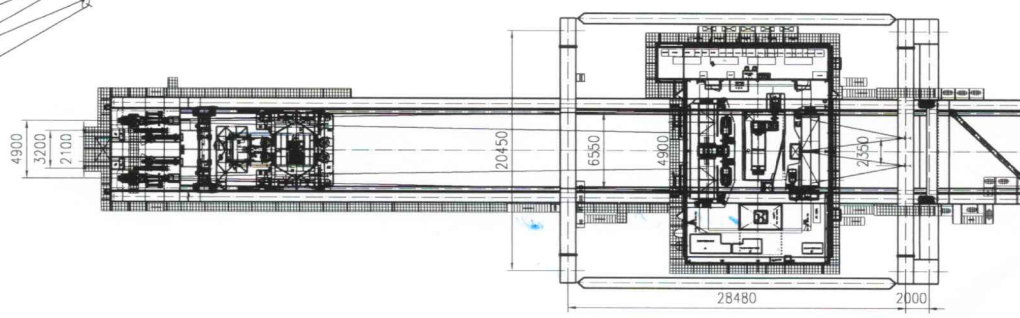
VIEW B



Main hoist rope reeving
起升绕绳系统

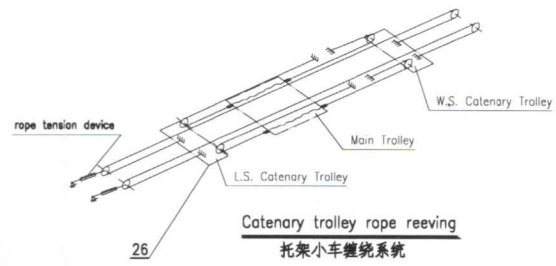
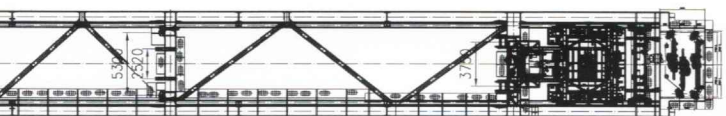
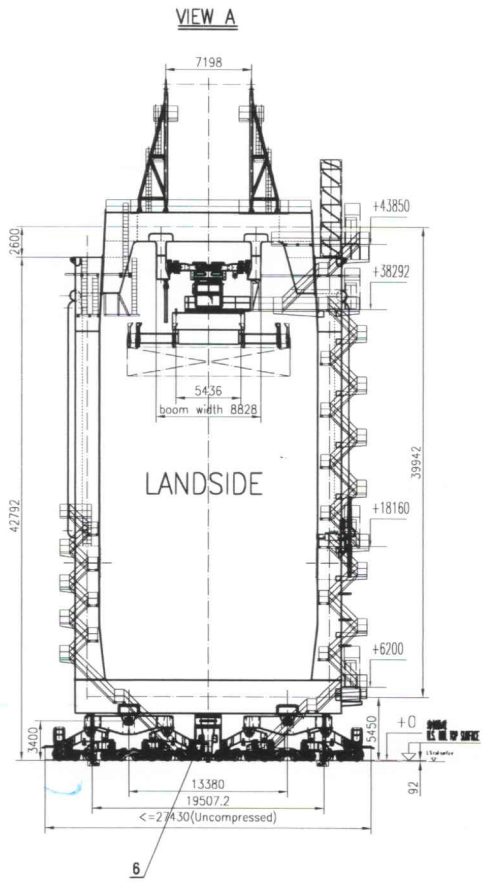
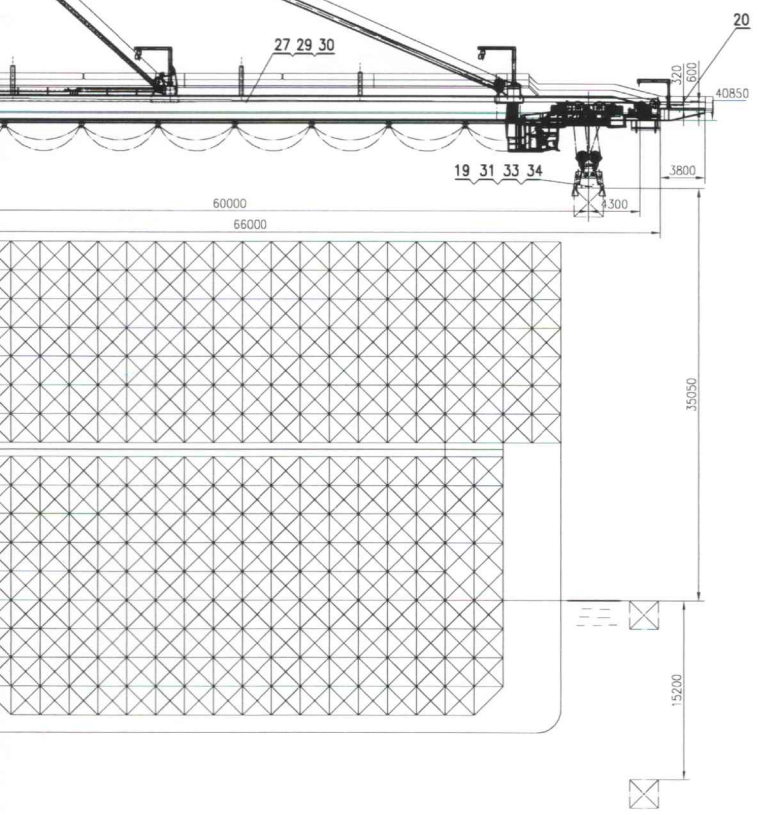
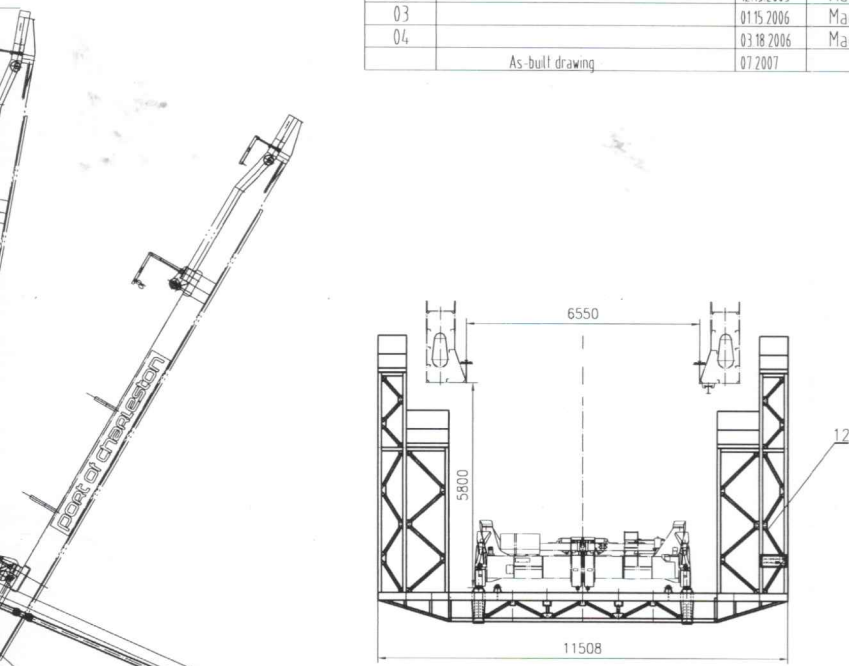


Trolley rope reeving
主小车绕绳系统



Rev No	description	date	sign
02		12.15.2005	Mao
03		01.15.2006	Mao
04		03.18.2006	Mao
	As-built drawing	07.2007	

Rated Load under Spreader		Twin Twenty		65LT			
		Single Container		50LT			
Rated Load under Hook		80LT					
Speeds	Main Hoist	Lifted Load(LT)	65	50	40	25	with empty spreader
		Speed(m/min)	60	70	85	115	170
	Main Trolley	240m/min					
	Gantry	60m/min					
Boom Hoisting Time		≤5 min					
Motors	Main Hoist	2x(349 Kw/635 rpm 546Kw/1800 rpm) IP55					
	Main Trolley	400 Kw		1750 rpm		IP55	
	Gantry	20x24 Kw		1750 rpm		IP55	
	Boom Hoist	300 Kw		1750 rpm		IP55	
Rail Gage	30.48m		Trim		±3.5'		
Out reach	60m		List		±4.5'		
Back reach	22.86m		Skew		±2.3'		
Height of lift	Above rail	35.05m					
	Total	50.25m					
Power	4.16kW, 3Ø, 60Hz						



NO.	SUB-NO. or STDD	NAME & SIZE	MTRL or STYLE	QTY/set	each WEIGHT	total	NOTE
PROJECT: North Charleston 65LT Container Cranes, SC, USA			DESIGN STAGE:		SCALE: 1:250		
ITEM NAME: 总布置图 GENERAL ARRANGEMENT			DRAW NO: J227A00		PROJ.		
ZPMC	DSGN		TRACE			APP.	
	DRAW		CHCK			Q'TY/SET	
	CHCK		VER.			SET/CRANE	