

Rule Change Briefing

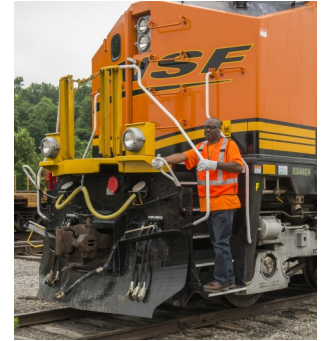
Transportation

TY&E Safety Rules S-13.1.5: Riding In or On Moving Equipment

February 22, 2022

Safety is more important than speed or convenience. The decision to ride on rail equipment must only occur after all options have been explored and you have determined it can be done safely.

Choosing Safety means we are taking the time to explore all options and choosing the safest course of action — such as walking, using a vehicle, repositioning the locomotive to pull instead of shove freight cars, or working with other employees to safely complete the task — to help eliminate the exposures related to riding on rail equipment.



Rule Change Effective March 1, 2022

S-13.1.5 Riding In or On Moving Equipment (*in part*)

Riding Engines

When necessary to ride engine exterior:

- Do not ride on platforms or walkways.
- Movement must not exceed 20 MPH.
- Do not ride steps to a coupling.

Exception:

- Platforms or walkways may only be used to move from one engine to another within a consist at speeds of 20 MPH or less. Do not extend any part of the body beyond the exterior edge on either side of the engine (for example, do not lean out to obtain fuel reading, inspect engine, etc.).

Questions for Discussion

❑ When riding an engine, do I always need to safeguard against slack action?

Yes. Always safeguard against potential slack action within the train or switch cut. Slack action while riding must be considered, and proper safeguards always applied. Slack action is most likely to occur when movement begins, when reducing car counts in advance of a stop, etc. To avoid unnecessary slack action/in-train forces, verify the route to be taken to ensure switches/derails are lined for proper route and cars/equipment on adjacent tracks are in the clear, when possible before moving.

❑ Is it acceptable to ride on platforms or walkways of the engine exterior?

No. Do not ride on platforms or walkways. Platforms or walkways may only be used to move from one engine to another within a consist at speeds of 20 mph or less.

❑ Can I move from the cab to the steps while approaching a switch or crew change location and my engine is moving?

No. Platforms or walkways may only be used to move from one engine to another within a consist at speeds of 20 mph or less.

❑ Can I ride the steps of an engine if I have determined that it is safe to do so?

Yes. It is acceptable to ride the steps; however, do not ride the steps to a coupling.

❑ If I need to put another locomotive on line within my consist, am I allowed to traverse the platforms or walkways of the engine exterior?

Yes. Provided that your speed is 20 mph or less, the platforms or walkways may be used to move from one engine to another within a consist.