

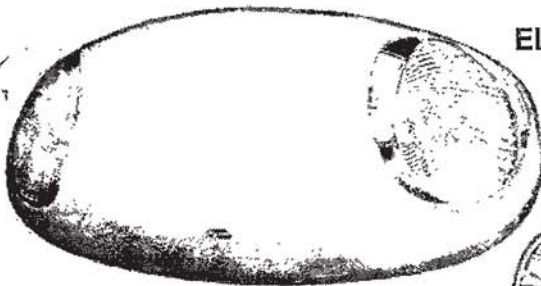
Installed  
5-18-11



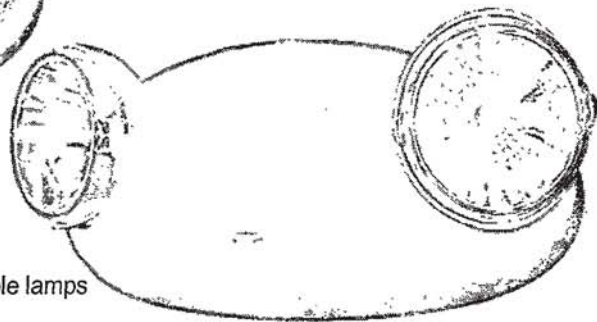
## INSTALLATION INSTRUCTIONS

# ELM & ELM2 EMERGENCY LIGHTING UNITS

**CAUTION:** For safety and proper operation, read and follow instructions carefully before installation.



ELM-- with stationary, fixed-optic lamps



ELM2-- with aimable lamps

Patent # US D473,672  
US D483,511  
US D484,272  
Patents pending

### IMPORTANT SAFEGUARDS

1. READ AND FOLLOW ALL SAFETY INSTRUCTIONS.
2. Before wiring to power supply, turn off electricity at fuse or circuit breaker.
3. All servicing should be performed by qualified personnel.
4. Consult your local building code for approved wiring and installation.
5. Do not use standard units outdoors. Units supplied with Damp Location option may be used outdoors under cover.
6. Do not mount near gas or electric heaters.
7. Equipment should be mounted in locations and at heights where it will not be readily subjected to tampering by unauthorized personnel.
8. The use of accessory equipment not recommended by the manufacturer may cause an unsafe condition.
9. Do not use this equipment for other than intended use.

**SAVE THESE INSTRUCTIONS**

## INSTALLATION

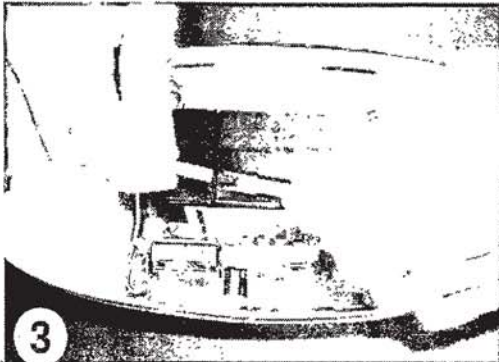
**NOTE:** This unit should be mounted **ONLY** through a pair of the preformed keyholes onto a 4" "OCTAGON" junction box, or through a pair of the keyhole knockouts onto a 4" SQUARE junction box.



1 Feed the fixture leads through the mounting plate and make connections to AC power supply.



Use only Flexible Conduit with this unit. Must be used with 4" j-box.

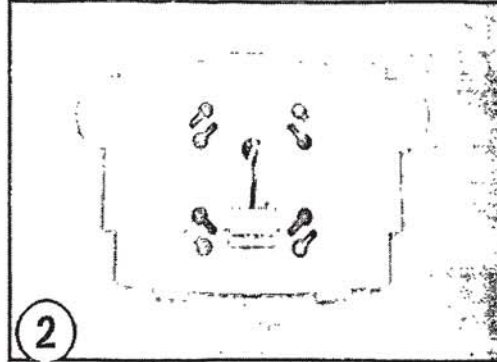


3 Connect the battery connector **ONLY** after continuous AC power can be provided to the unit.

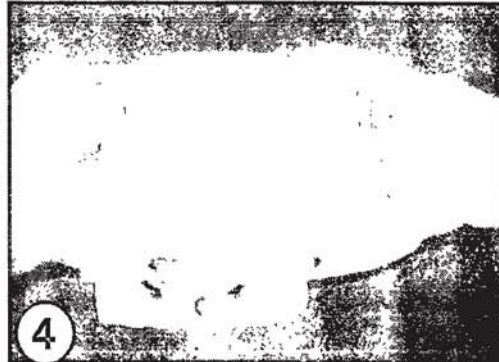
**Caution:** Damage to the battery will occur if the battery is connected to the charger board for a prolonged period of time without continuous AC power provided.

**NOTE:** Allow battery to charge 24 hours before initial testing, and 48 hours to fully charge battery.

**NOTE:** Make sure red battery wires are securely inside the battery compartment before final assembly of cover and mounting plate.



2 Dress the wires into the junction box. Secure the mounting plate onto the junction box with a minimum of two screws. **NOTE:** To ensure proper engagement of the snaps in the mounting plate to the housing, **DO NOT OVERTIGHTEN THE SCREWS.**

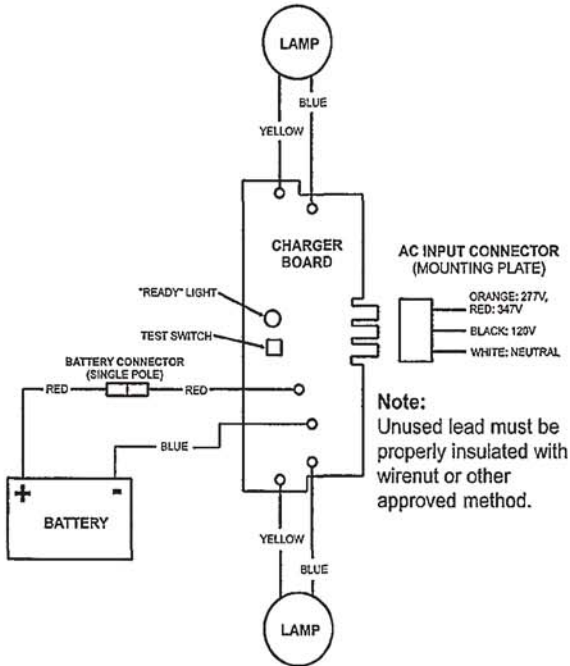


4 Align the holes on the bottom of the housing with the circular snaps at the bottom of the mounting plate, and push the housing directly onto the mounting plate. The two snaps at the bottom, as well as the two hidden snaps at the top, should make an audible snap when fully engaged. Apply continuous power and check that the test switch is lit red, indicating proper function.

**NOTE:** Battery must be connected to the unit prior to applying AC power. A false battery failure will be indicated after 30 hours of AC power has been applied if the battery is not connected properly.

5 Aim the lamps (ELM2) as desired.

## WIRING DIAGRAM



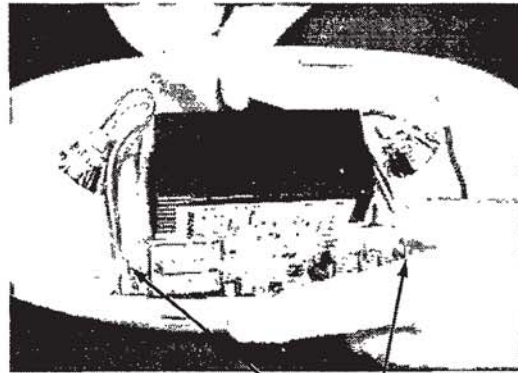
**Charger board replacement:** Flex the snap at each end of the charger board and pull it straight out of the housing. Re-connect all leads to the new charger board. Slide the new charger board into place, making sure it is secured by both snaps.

### Important Battery Information:

Batteries are perishable items. For best results, it is recommended that the battery receive an initial charge within the first 18 months of the manufacture date of the fixture. The mfg date can be found on the outside of the unit packaging and on the UL label as part of the Date Code/Series. Note: First two digits in the date code will represent the year and the second two digits will represent the month. Batteries beyond the initial charge recommendation time frame can often times be returned to full capacity by fully charging the battery shortly after installation. If the battery will not fully charge after the initial charge, replacing the battery with a fresh battery will resolve the issue.



**Battery replacement:** Disconnect battery connector. Release hook-and-loop strap and remove battery. Disconnect leads and connect to new battery. Install new battery in orientation shown above and secure strap. Reconnect battery connector.



Snaps

### WARRANTY THREE-YEAR

This three year warranty covers any defect in manufacturing, provided the defect develops under normal and proper use. This liability does not include lamps, and extends only to replacement of the defective part. Labor charges will be honored by the factory only with prior written approval from an authorized Post Sales representative.

**LITHONIA LIGHTING®**

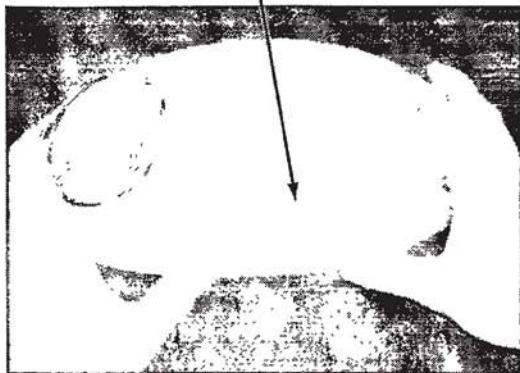
An AcuityBrands Company  
EMERGENCY LIGHTING SYSTEMS  
TEL: 800-334-8594 Fax: 770-981-8141 www.lithonia.com

Part # EMCSA00700, rev. G

## INSPECTION AND MAINTENANCE

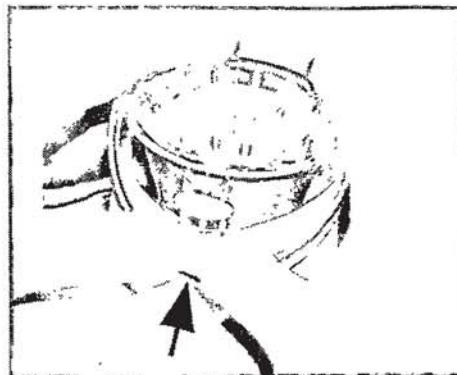
**A. Normal Operation:** When the unit is functioning properly, with power applied to it, the "TEST" button will be illuminated red.

**B. To Test:** Press the "TEST" button. It will remain illuminated while the emergency DC lamps turn on.



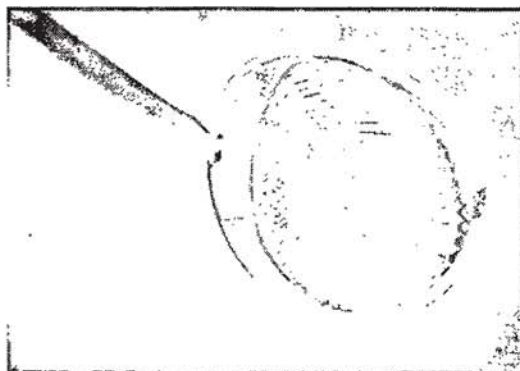
### **To open the housing:**

Press both circular snaps at the bottom of the housing. Rotate the housing upward and pull it firmly away from the mounting plate.



### **Lens removal, ELM2:**

Turn lamphead to the side revealing the snap areas for the lens. Press on body of lamphead with thumbs as shown in Fig. 1. While pressing on lamphead push lens over oval snap using both thumbs. **Warning :** Forcing a tool underneath lens and prying off may damage lens.



### **Lens removal, ELM:**

Insert & gently twist a flat-blade screwdriver in the notch shown above.



### **Lamp replacement:**

Gently pry the lamp from the socket using a flat blade screwdriver. Replace it with an identical lamp as listed on the unit.

**NOTE:** Emergency lighting systems should be tested as often as local codes require, or at least monthly, to ascertain that all components are operational.

Part # EMCSA00700