



NTSB ERA22FA004

N283SA, Dassault Fanjet Falcon

Photo Array



Photo 1: Overview of the cockpit and fuselage



Photo 2: View of the empennage



Photo 3: View of the right wing, flaps, and air brakes found deployed.



Photo 4: View of the right air brake deployed



Photo 5: Overview of the fragmented left wing and air brake partially extended



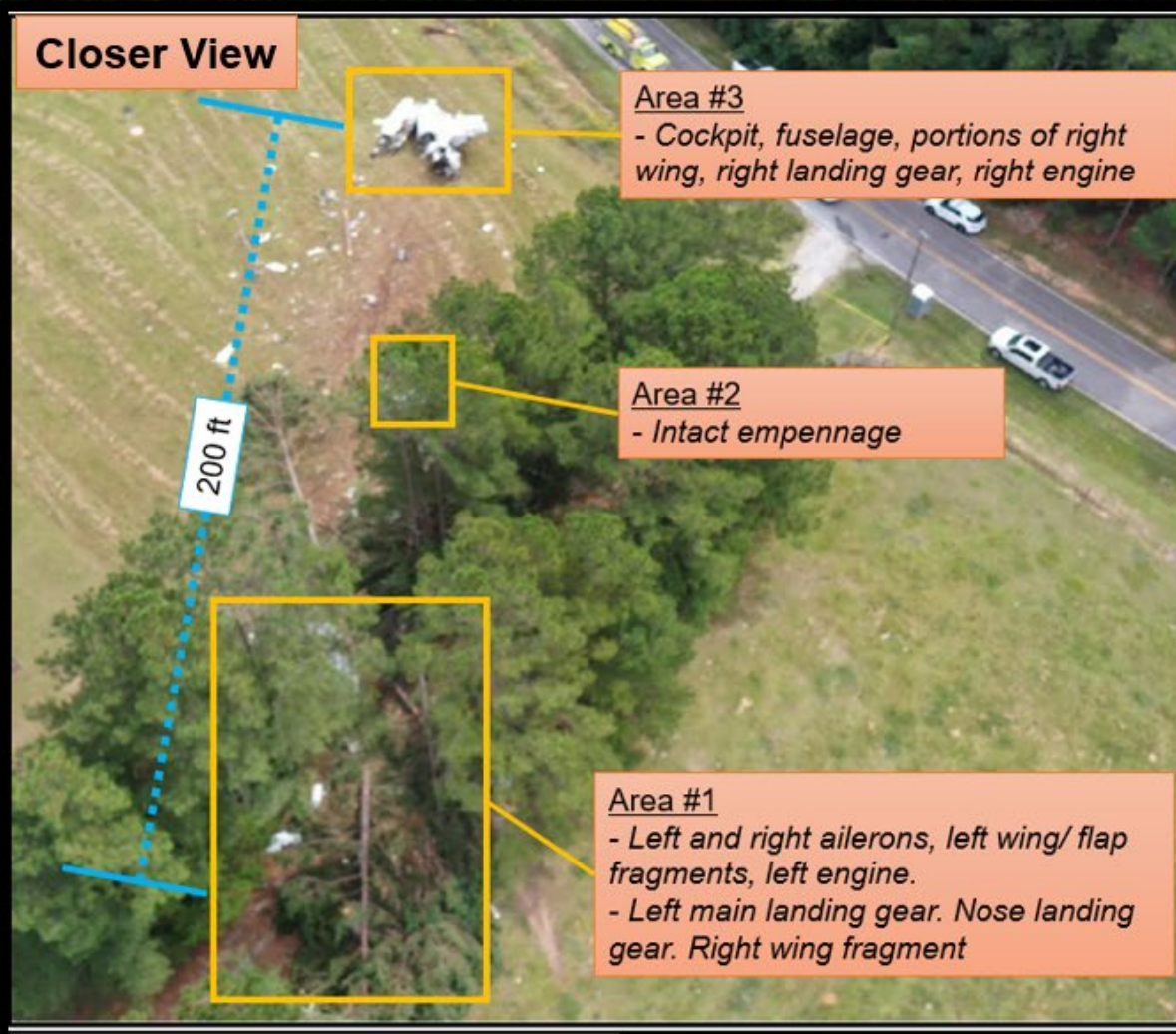
Photo 6: View of the approach path through trees. The arrow represents the approach path direction.



Photo 7, 8: View of left and right engine ingestion of forest elements



Photo 9, 10: View of the left and right cockpit panels as recovered during the layout and examination of wreckage.



NTSB Investigation: ERA22FA004

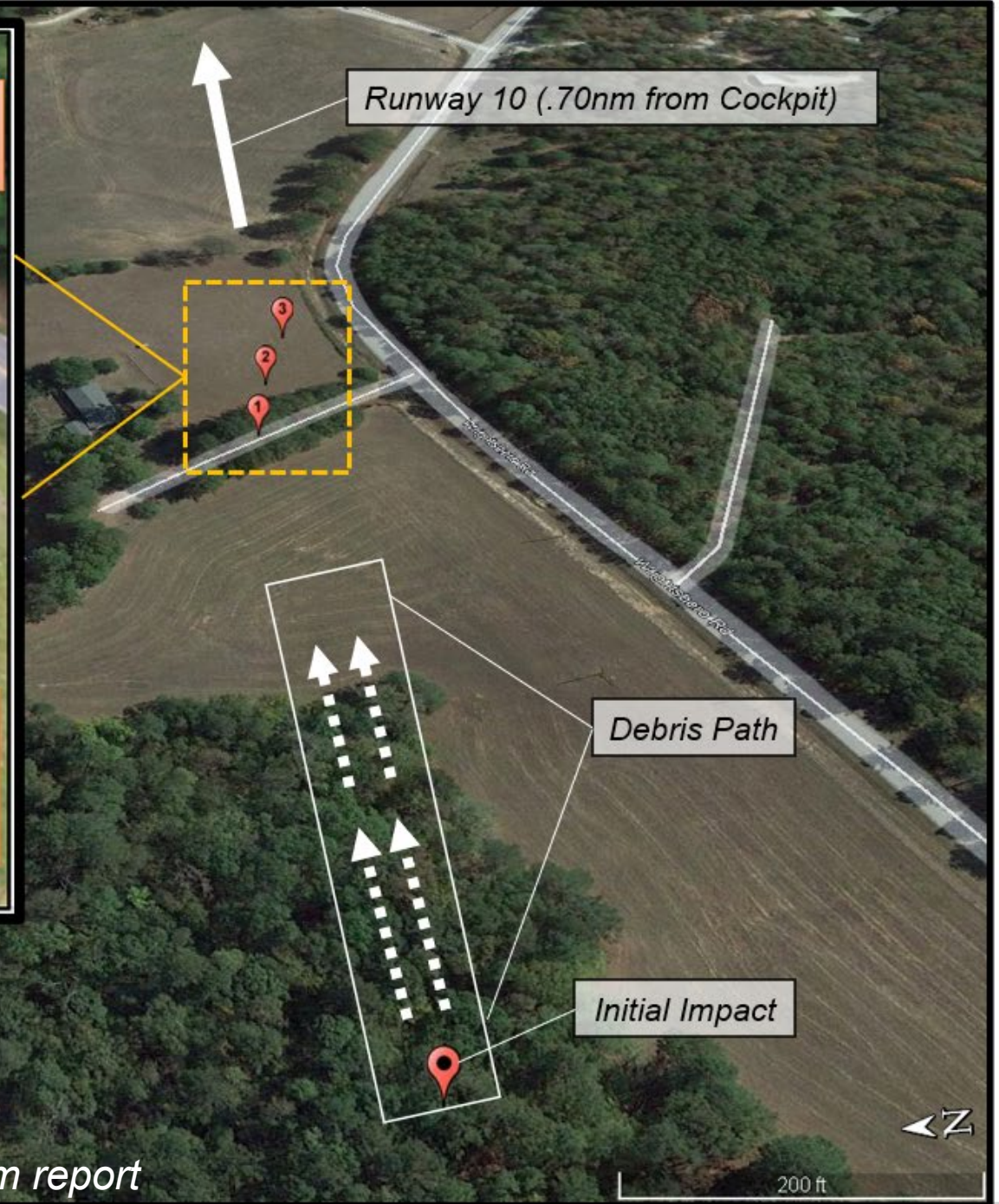


Figure from report