

CEN23MA034

**OPERATIONAL FACTORS/HUMAN PERFORMANCE**

Attachment 22

Wings Over Dallas Preshow Briefing

November 22, 2023

## **Wings Over Dallas 2022**

**Fill out Sign-in Sheet Each Day!!**

**Air Boss: Russell Royce**

**Mini Boss: Sam Hufstetler**

# Roll Call

CFR

Pyro

Tower

Airfield Mgmt

CAF FLS

Marshalls

Announcer

Gena

FAA

Sound

Trojan Phlyers

TORA

P-51

SB2C

P-63

Twisted Texan

B17 -7227C

B24 – 24927

B25 – 9643C11w`gpi`]'t

Ge21`

B25 – YR

B29 – 529B

C45yb – 40074

C45bob –

C45blue -

C45Grey -

C47-

C47 – 47TB

PT17 – 7058Q

PT17-

P51gf – 5428V

P51rt -

T6 – 3646G

T6 – 7300C

T6 – 9790Z

T6 – 6253C

T6 – 101X

PT19 -49238

T34 – 6849C

T34 – 820HV

BT13 – 61BT

BT13 - 69605

# OVERVIEW

- Time Hack
- Air Show Staff
- Waiver
- Weather
- Airfield
- Airspace
- ROE
- Sequence
- Questions

# Time Hack



Air Show Staff / Important people

# Waiver - FAA

- Read and Sign
- Understand the waiver and provisions
- Ask questions
- See FAA for credentials.

# Weather

1120Z 1212/1312

34012KT P6SM SCT300

FM130000 P6SM 03004KT P6SM SCT300

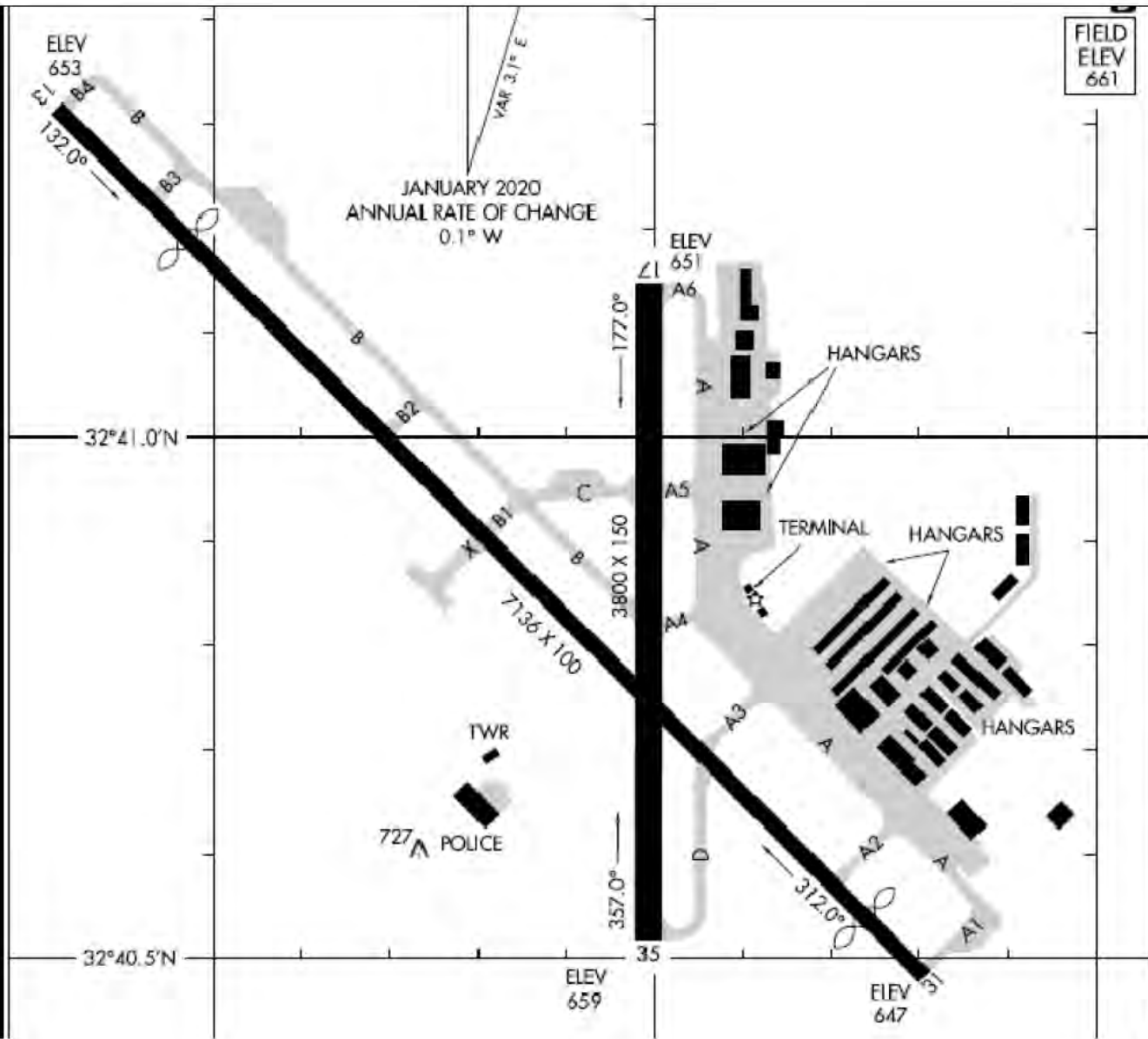
**Air Boss: Russell Royce**

**Mini Boss: Sam Hufstetler**



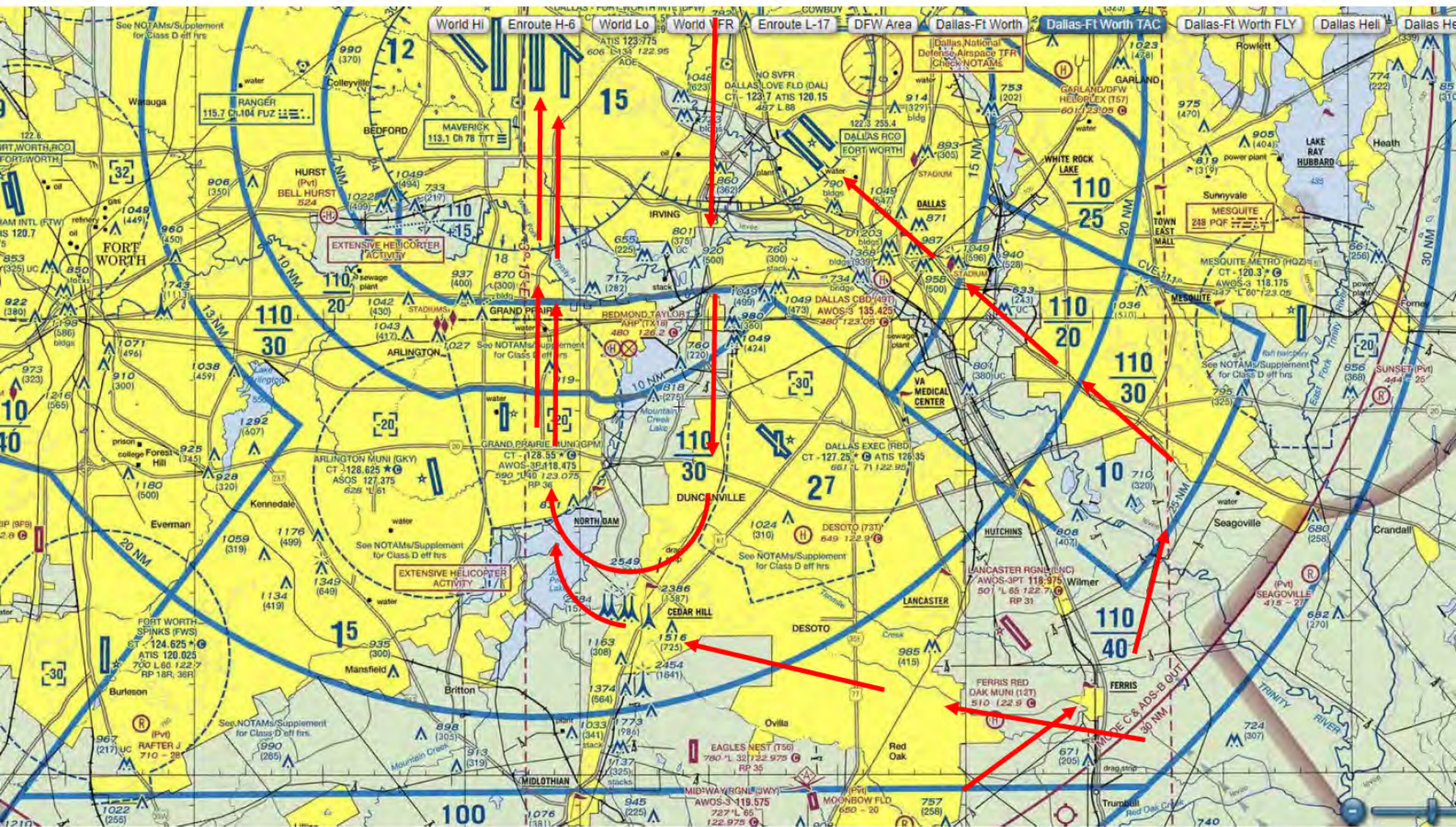
Required Crew Only!

# Airfield Diagram



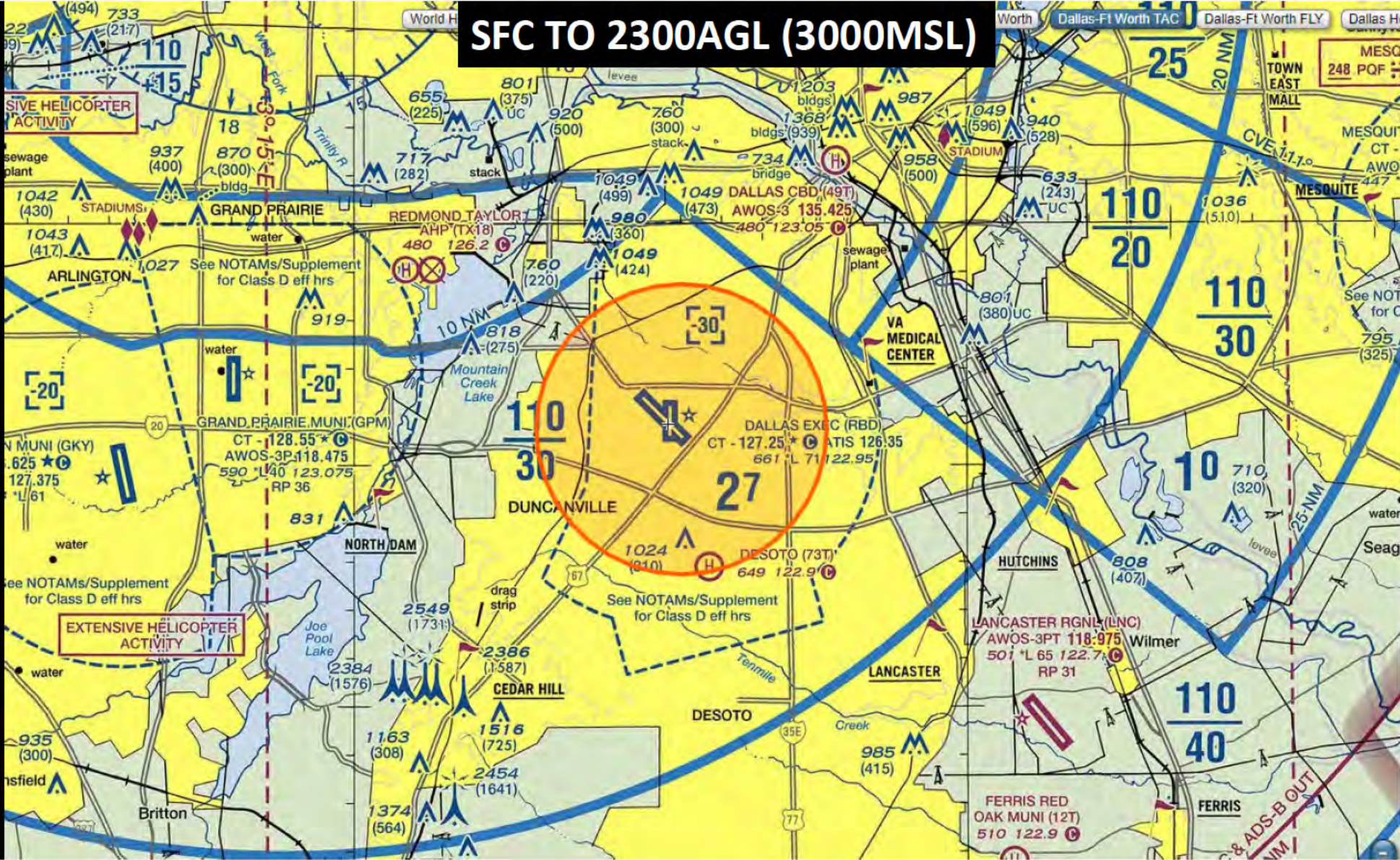


Airspace





# SFC TO 2300AGL (3000MSL)

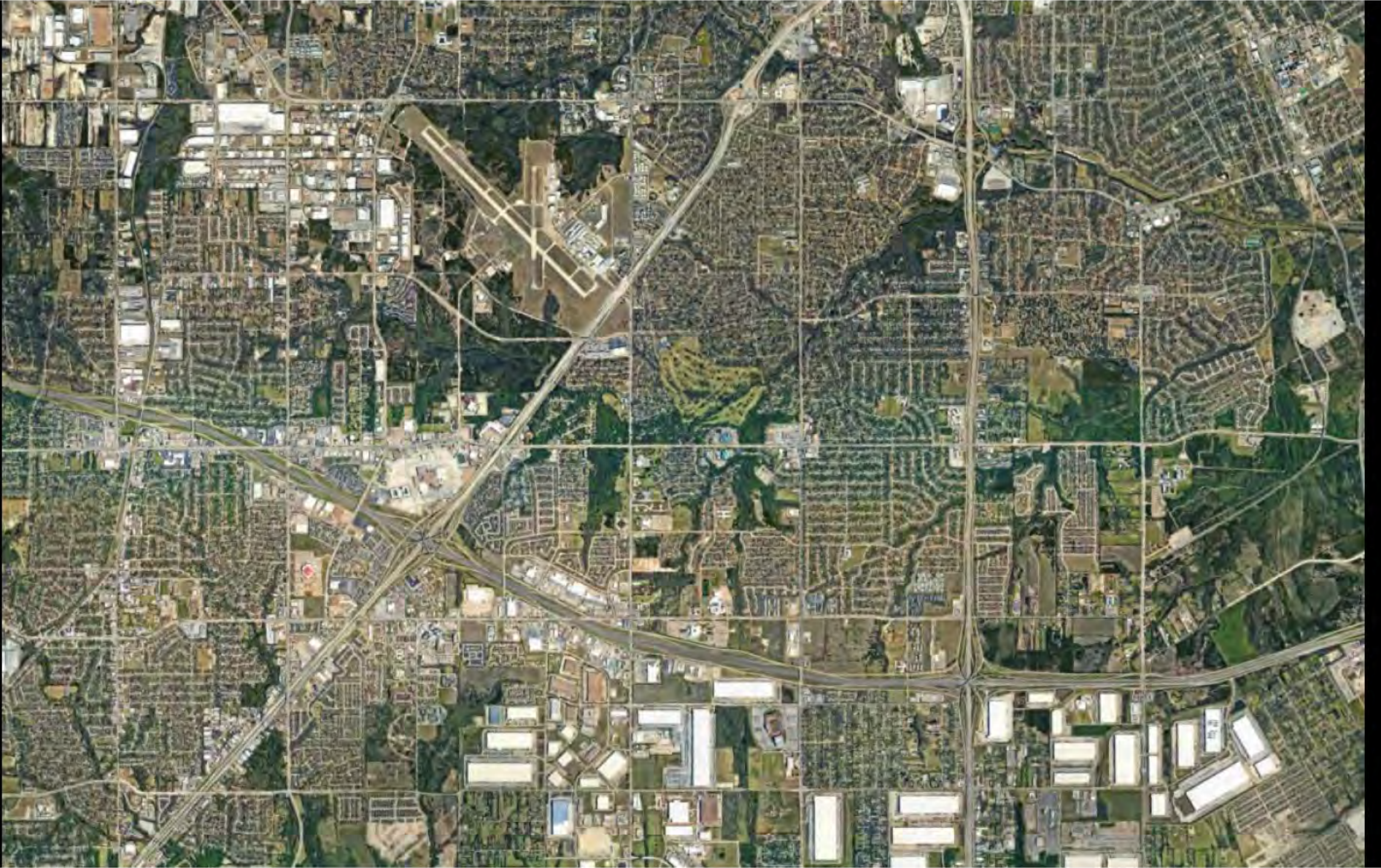




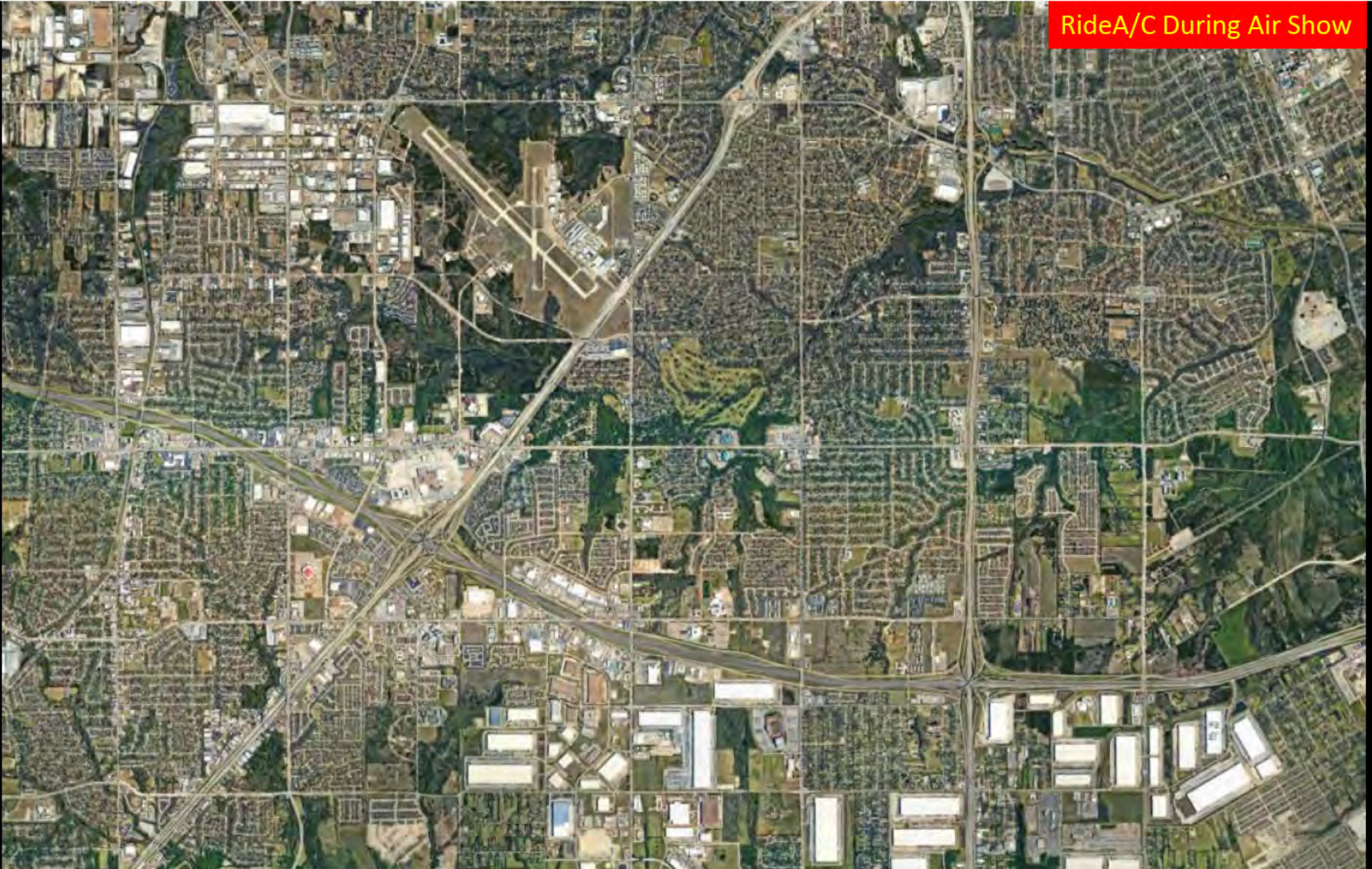




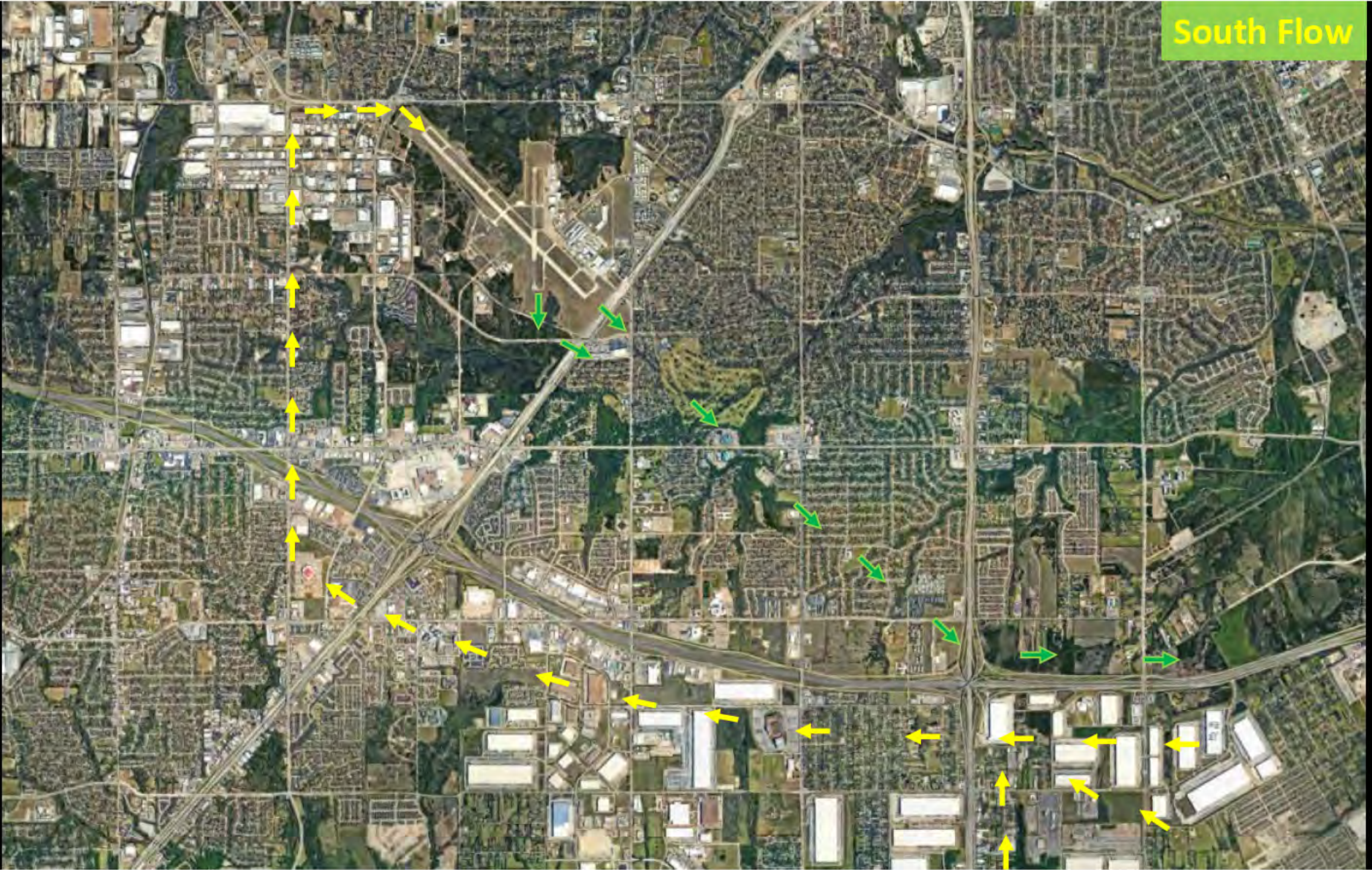




RideA/C During Air Show



South Flow



**South Flow**

- PT/BT = 1800MSL (1100AGL)
- C45= 2000MSL (1300AGL)
- AT6 / T34 = 2200MSL (1500AGL)
- Bombers = 2500MSL (1800AGL)
- Fighters = 2800MSL (2100AGL)

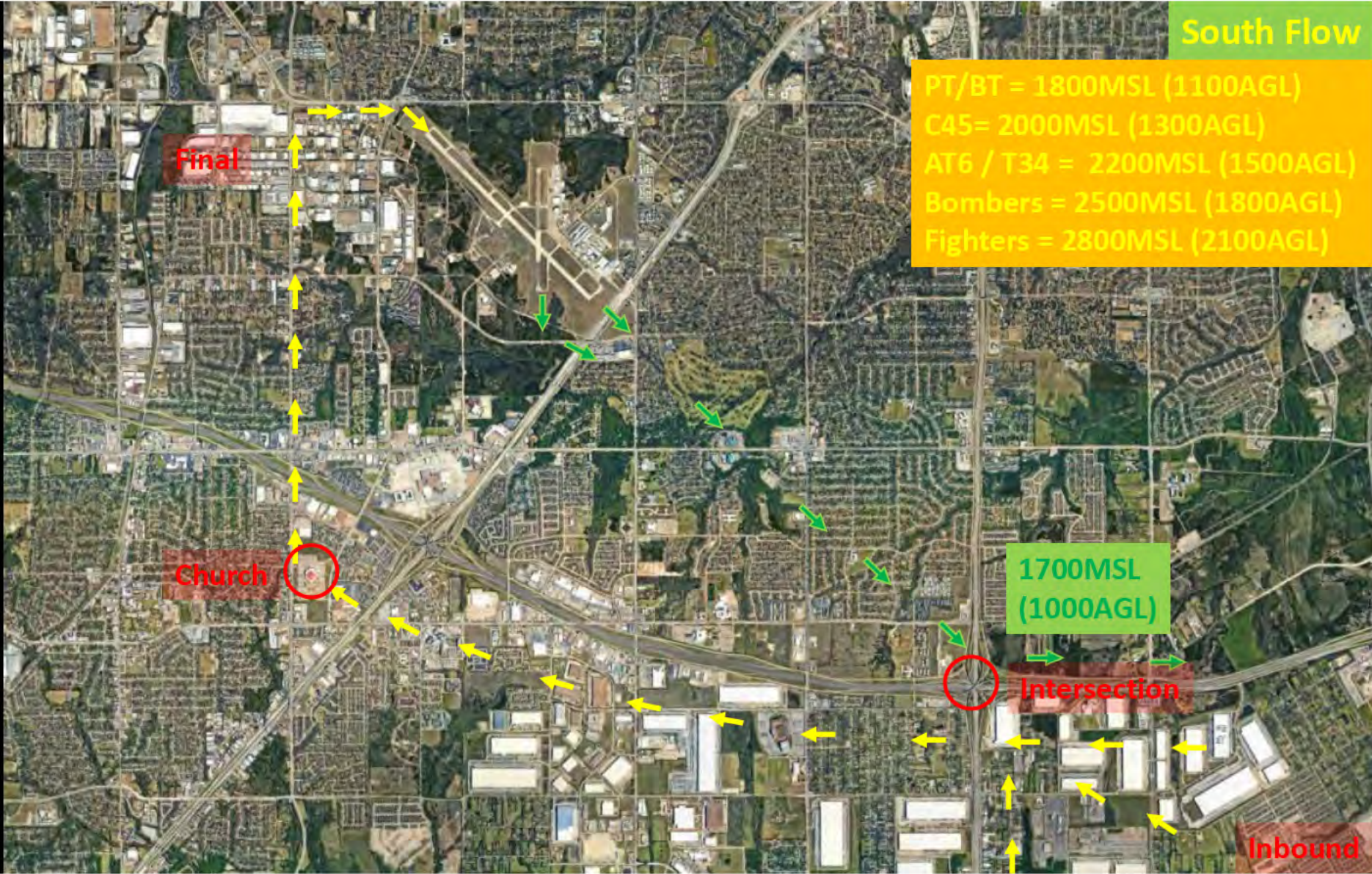
**Final**

**Church**

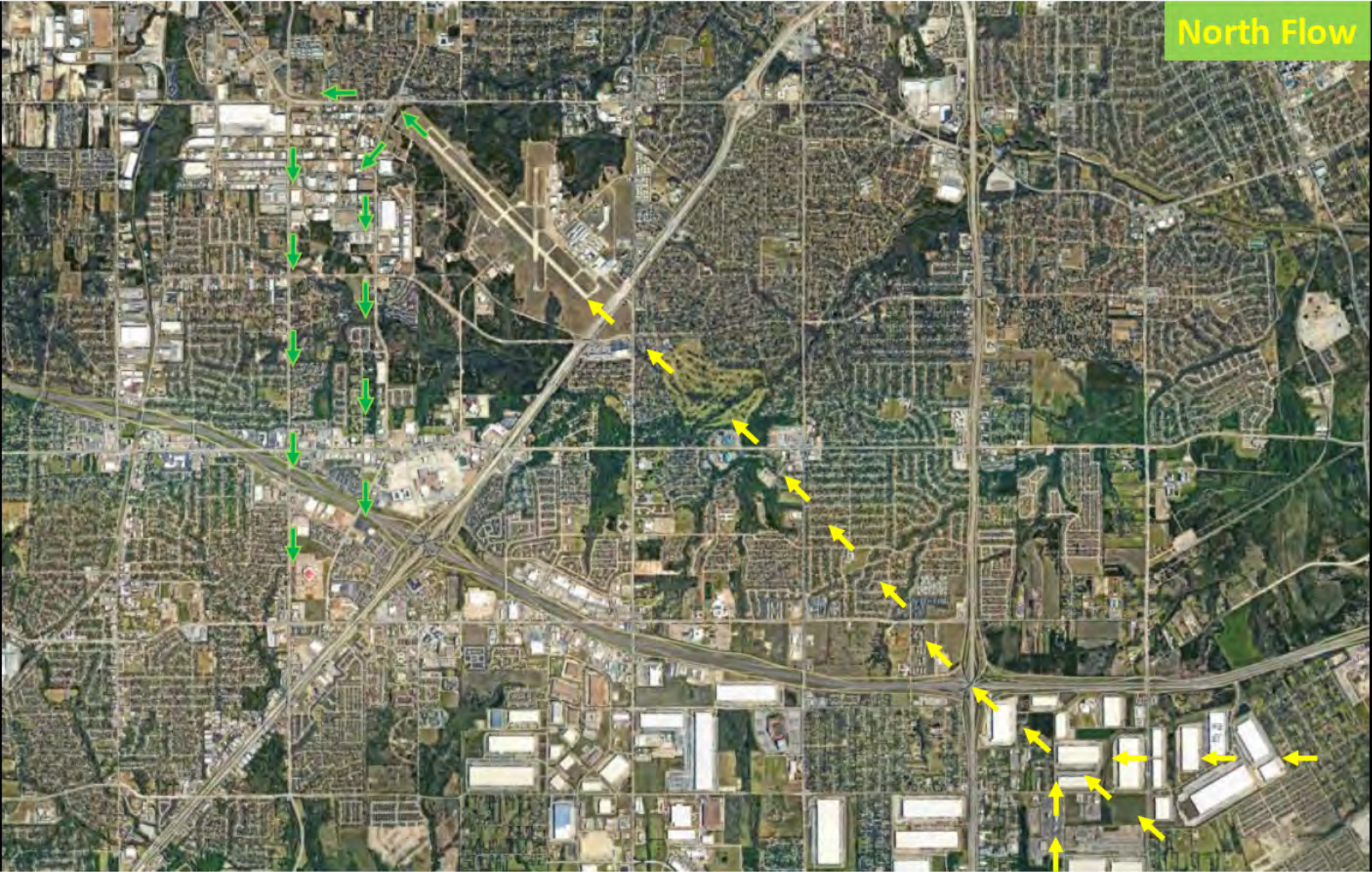
**1700MSL  
(1000AGL)**

**Intersection**

**Inbound**



North Flow



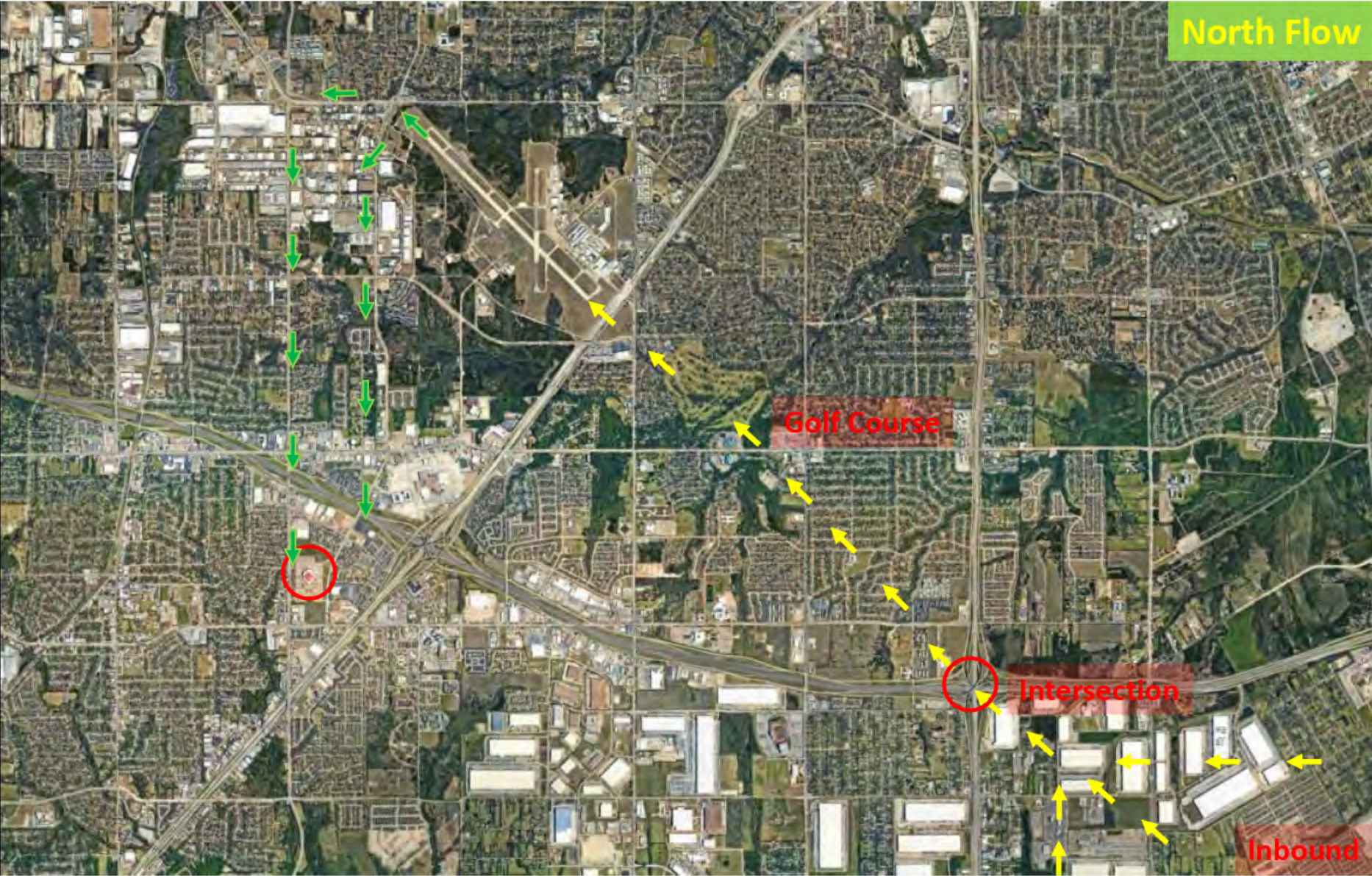


North Flow

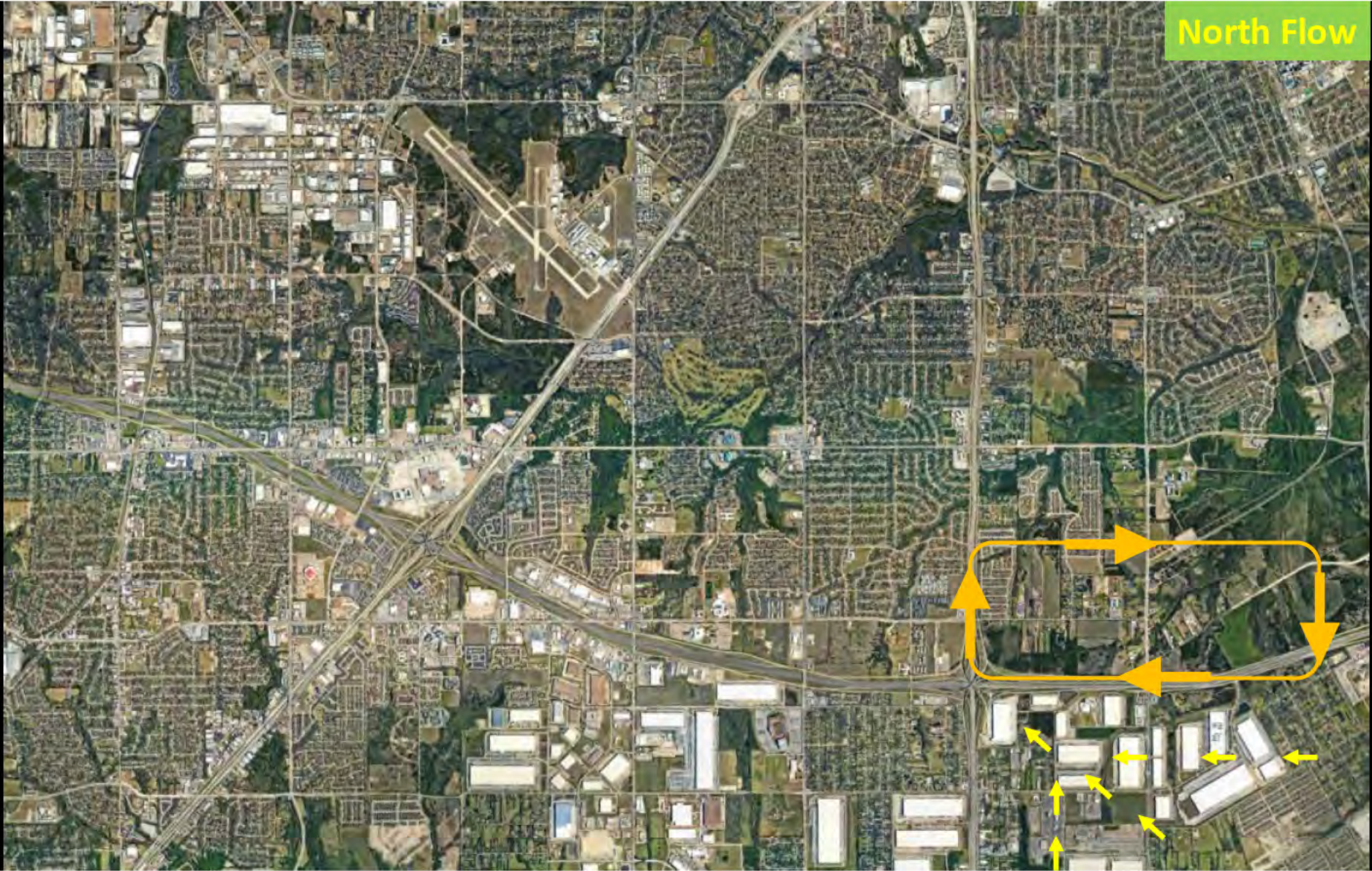
Golf Course

Intersection

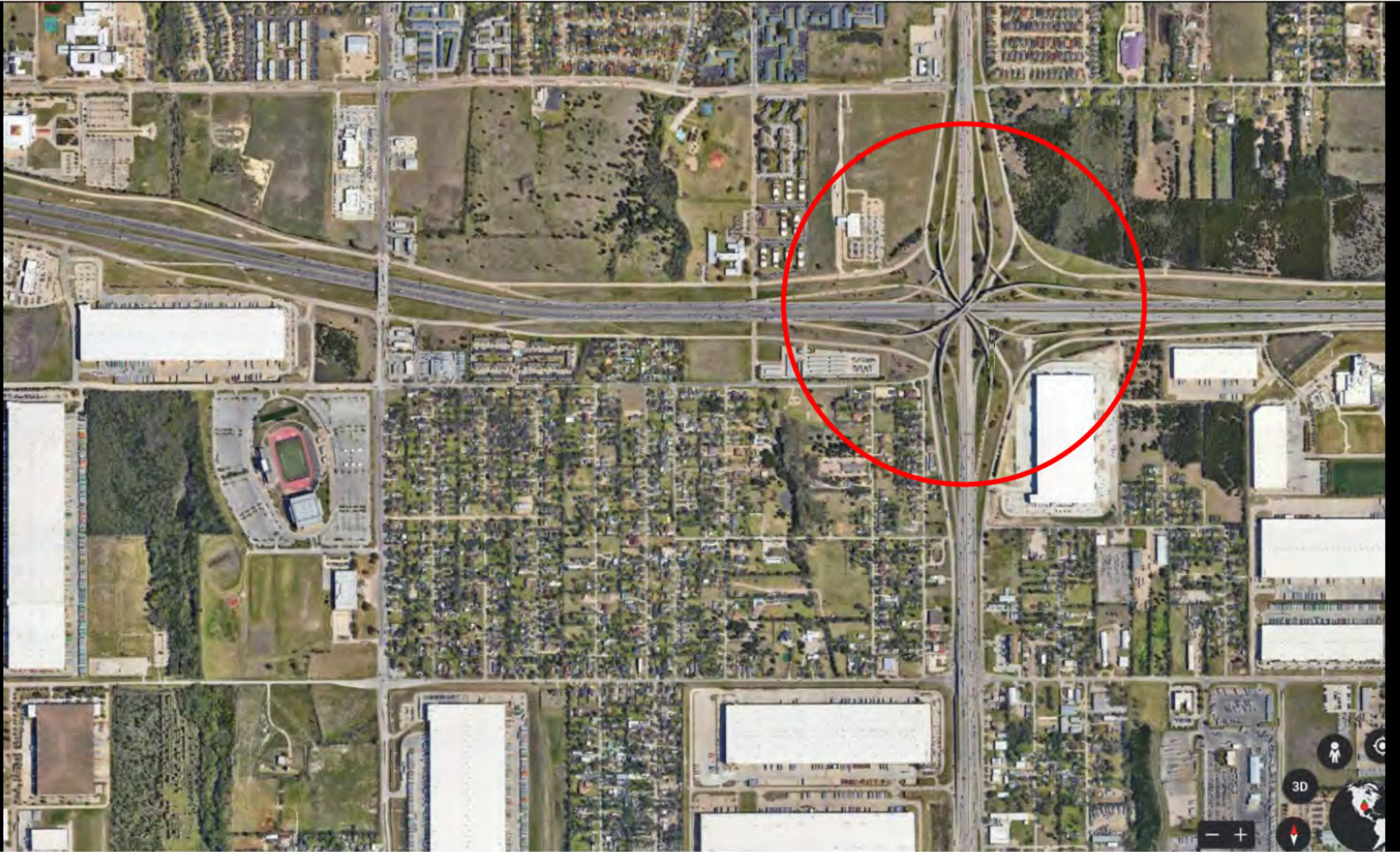
Inbound

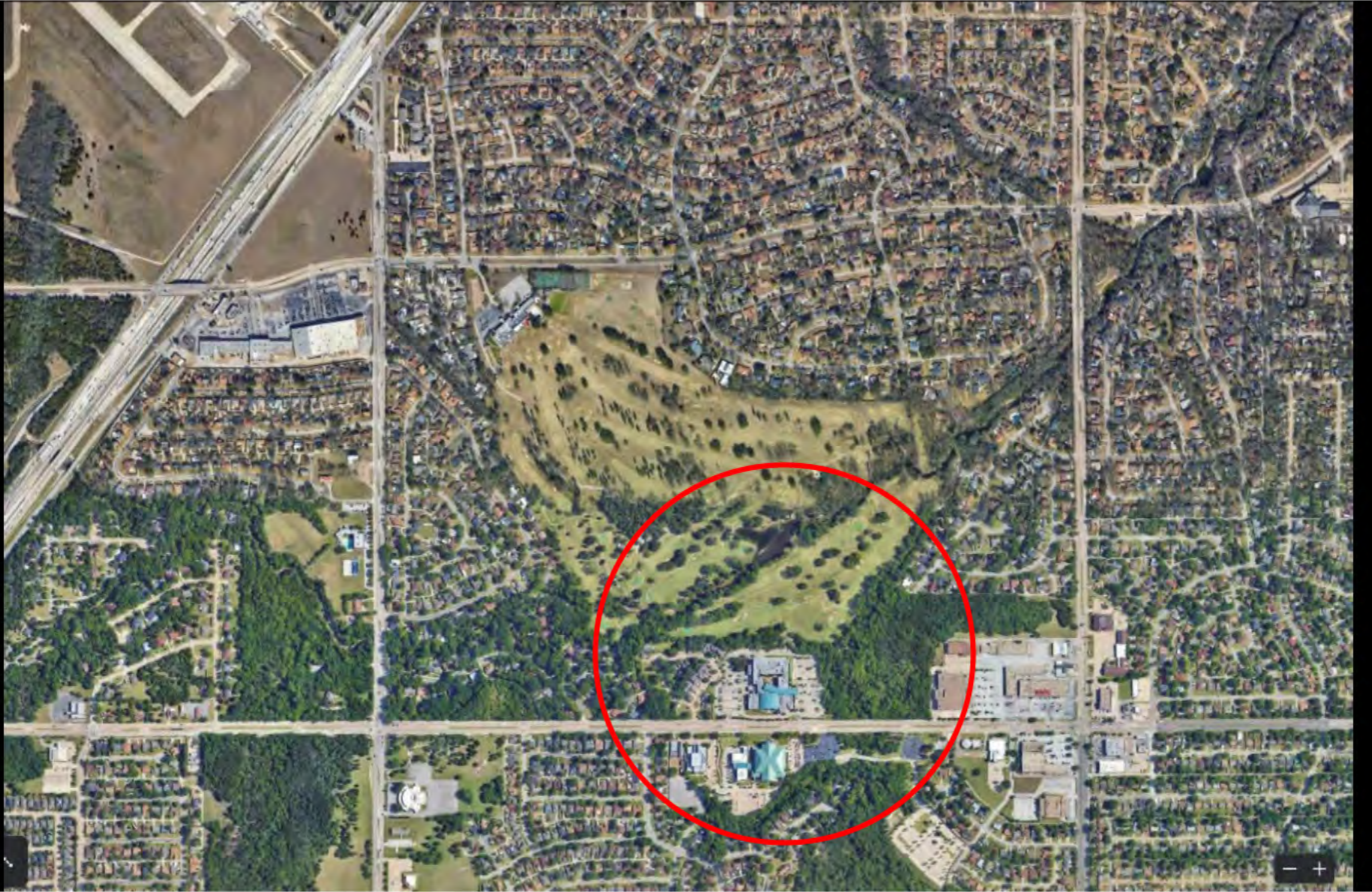


North Flow

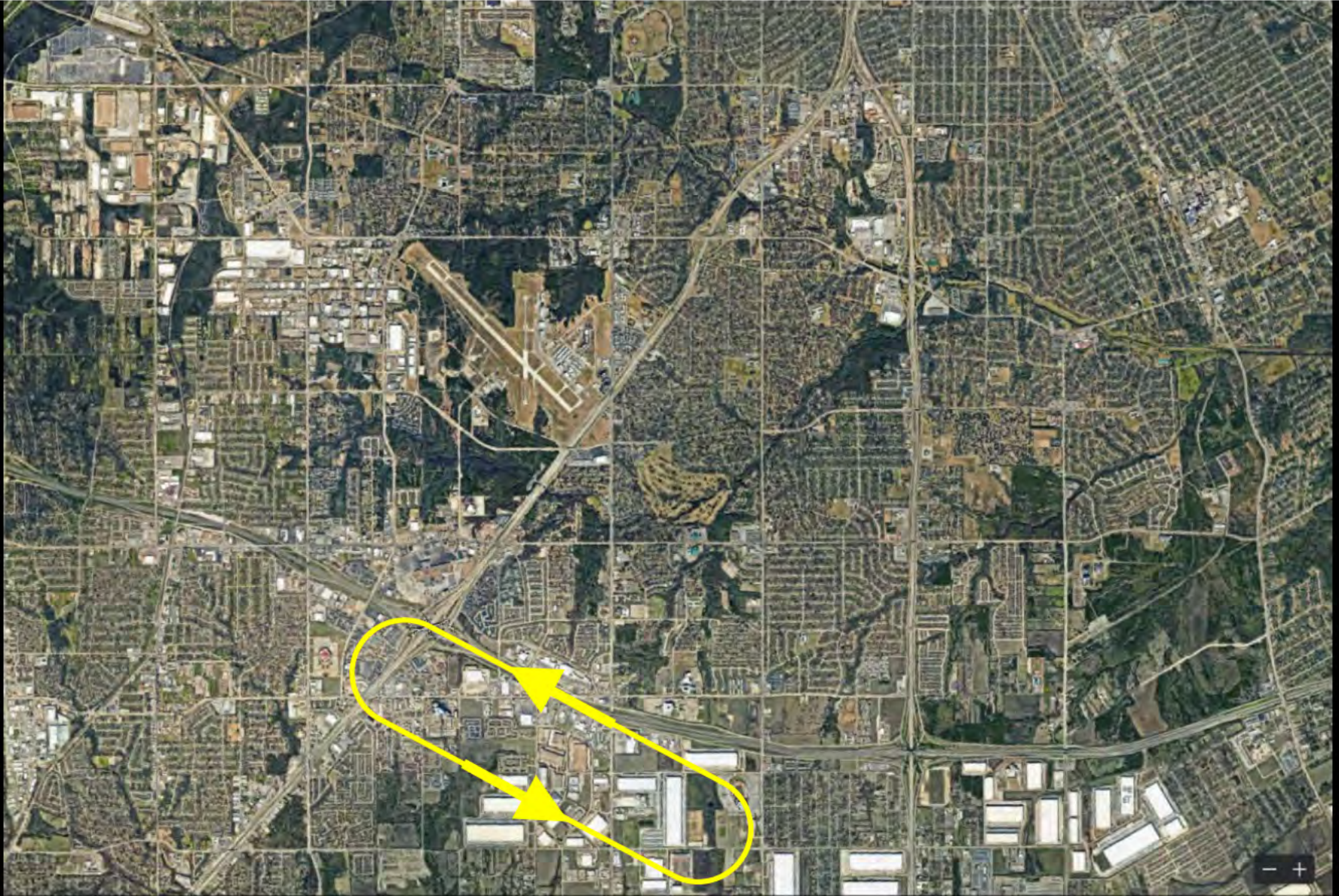








Orbit area



ROE



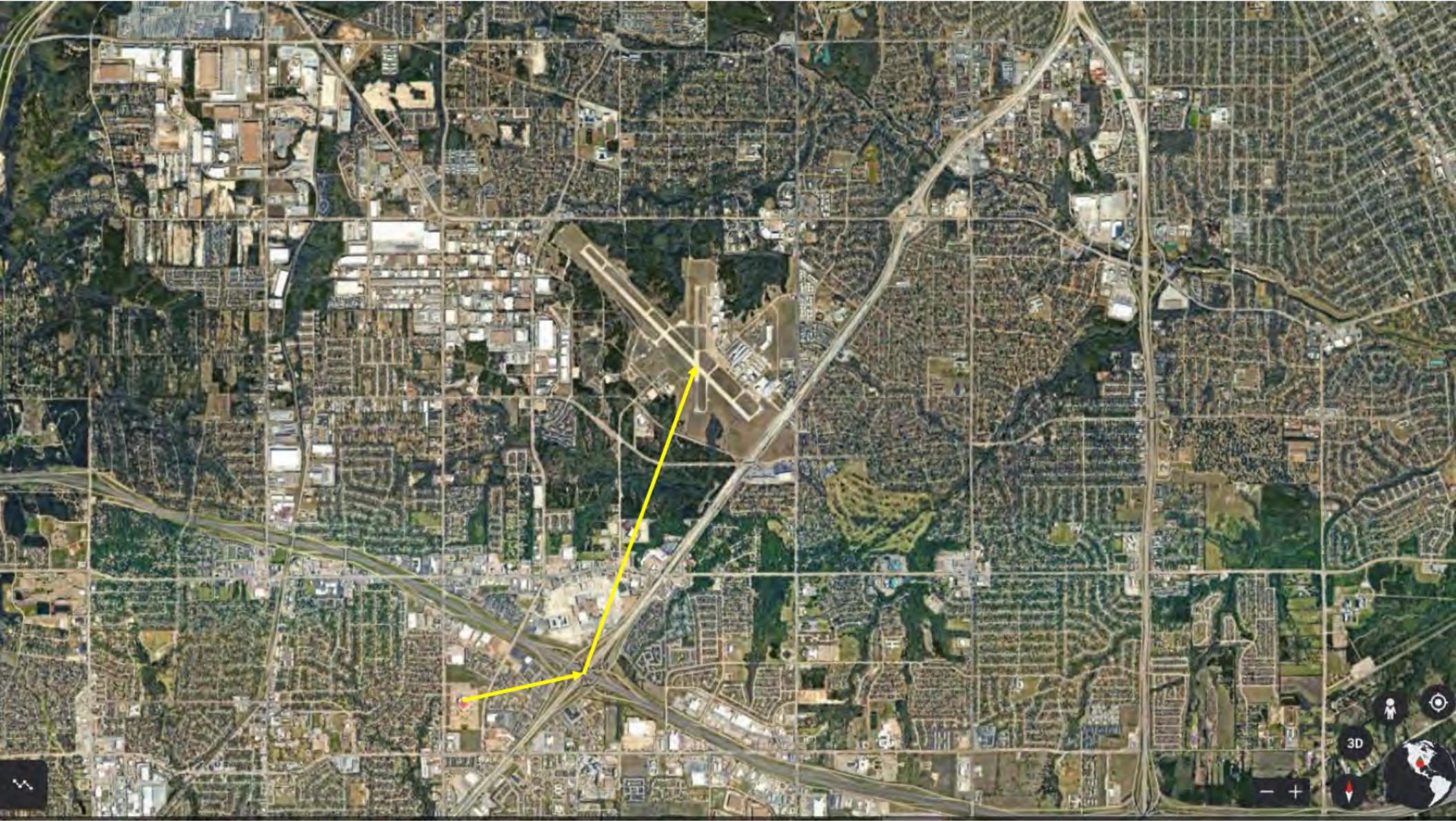
# Emergencies

- Fly the Plane!
- State Your Intentions

# Performers' Line Up

**Air Boss: Russell Royce**  
**Mini Boss: Sam Hufstetler**







2.2 NM @ KIAS

1.6 NM @ KIAS

@130 = 61s

@130 = 44s

@140 = 57s

@140 = 41s

@150 = 53s

@150 = 38s

@160 = 50s

@160 = 36s

@180 = 44s

@180 = 32s

@200 = 40s

@200 = 29s

@220 = 36s

@220 = 26s

2.2 NM

1.6 NM

3D



Announcer

# Items of Interest

- Safety First
- Stay Hydrated
- Risk Assessment

Questions?