

SART Event Cards

Comms:	ATC: As Required NTSB: 22A
Event:	Test Point 1 (PAINTING BEACON – SRCH2)
Start Point:	Potomac River, At MARSHAL HALL (vicinity), Northeast
Route:	Stationary at MARSHALL HALL (vicinity)
Altitude:	>150 FT AGL, or Safe Altitude as Required
Groundspeed:	HOVER
Duration	TBD

RDR-1300C Configuration

Range Rings:	>10 NM
Mode:	SRCH2
Gain Control:	AS REQUIRED

Predicted Observation:

At ranges greater than 1NM, a conical pulse pattern should be observed emanating from location of beacon. Radar gain control may need to be adjusted to observe beacon.

Start Time:

End Time:

Notes:

SART Event Cards

Comms:	ATC: As Required NTSB: 22A
Event:	Test Point 2 (PAINTING BEACON – SRCH3)
Start Point:	Potomac River, At MARSHAL HALL (vicinity), Northeast
Route:	Stationary at MARSHALL HALL (vicinity)
Altitude:	>150 FT AGL, or Safe Altitude as Required
Groundspeed:	HOVER
Duration:	TBD

RDR-1300C Configuration

Range Rings:	>10 NM
Mode:	SRCH3
Gain Control:	AS REQUIRED

Predicted Observation:

At ranges greater than 1NM, a conical pulse pattern should be observed emanating from location of beacon. Radar gain control may need to be adjusted to observe beacon.

Start Time:

End Time: _____

Notes:

SART Event Cards

Comms:	ATC: As Required NTSB: 22A
Event:	Test Point 3 (APPROACHING BEACON – SRCH2)
Start Point:	Potomac River, At MARSHAL HALL, Track Northeast
Route:	MARSHALL HALL track NE toward FORT WASHINGTON
Altitude:	>150 FT AGL, or Safe Altitude as Required
Groundspeed:	>25 Knots, or Safe Airspeed as Required

RDR-1300C Configuration

Range Rings:	>10 NM
Mode:	SRCH2
Gain Control:	AS REQUIRED

Predicted Observation:

At ranges greater than 1NM, a conical pulse pattern should be observed emanating from location of beacon. Upon approach of SART, within 1NM, concentric rings should be displayed on RDR-1300C Display.

Start Time: _____

End Time:

Notes:

SART Event Cards

Comms:	ATC: As Required NTSB: 22A
Event:	Test Point 4 (APPROACHING BEACON- SRCH3)
Start Point:	Potomac River, At MARSHAL HALL, Track Northeast
Route:	MARSHALL HALL track NE toward FORT WASHINGTON
Altitude:	>150 FT AGL, or Safe Altitude as Required
Groundspeed:	>25 Knots, or Safe Airspeed as Required

RDR-1300C Configuration

Range Rings:	>10 NM
Mode:	SRCH3
Gain Control:	AS REQUIRED

Predicted Observation:

At ranges greater than 1NM, a conical pulse pattern should be observed emanating from location of beacon. Upon approach of SART, within 1NM, concentric rings should be displayed on RDR-1300C Display.

Start Time: _____

End Time:

Notes:

SART Event Cards

Comms:	ATC: As Required NTSB: 22A
Event:	Test Point 5 (HOVER- SRCH3)
Start Point:	FORT WASHINGTON (vicinity)
Route:	Stationary at FORT WASHINGTON (Vicinity)
Altitude:	>150 FT AGL, or Safe Altitude as Required
Groundspeed:	HOVER
RDR-1300C Configuration	
Range Rings:	>10 NM
Mode:	
Gain Control:	AS REQUIRED
Predicted Observation:	
Concentric rings should be displayed on RDR-1300C Display.	

Start Time:

End Time:

Notes:

SART Event Cards

Comms:	ATC: As Required NTSB: 22A
Event:	Test Point 6 (REPEAT) REPEAT TEST A POINT IF REQUIRED TEST POINT _____
Start Point:	
Route:	
Altitude:	>150 FT AGL, or Safe Altitude as Required
Groundspeed:	
RDR-1300C Configuration	
Range Rings:	>10 NM
Mode:	
Gain Control:	AS REQUIRED
Predicted Observation:	

Start Time: _____

End Time:

Notes:

SART Event Cards

Comms:	ATC: As Required NTSB: 22A
Event:	Test Point 7 (REPEAT) REPEAT TEST A POINT IF REQUIRED TEST POINT _____
Start Point:	
Route:	
Altitude:	>150 FT AGL, or Safe Altitude as Required
Groundspeed:	
RDR-1300C Configuration	
Range Rings:	>10 NM
Mode:	
Gain Control:	AS REQUIRED
Predicted Observation:	

Start Time: _____

End Time:

Notes:

SART Event Cards

Comms:	ATC: As Required NTSB: 22A
Event:	Test Point 8 (REPEAT) REPEAT TEST A POINT IF REQUIRED TEST POINT _____
Start Point:	
Route:	
Altitude:	>150 FT AGL, or Safe Altitude as Required
Groundspeed:	
RDR-1300C Configuration	
Range Rings:	>10 NM
Mode:	
Gain Control:	AS REQUIRED
Predicted Observation:	

Start Time: _____

End Time:

Notes:

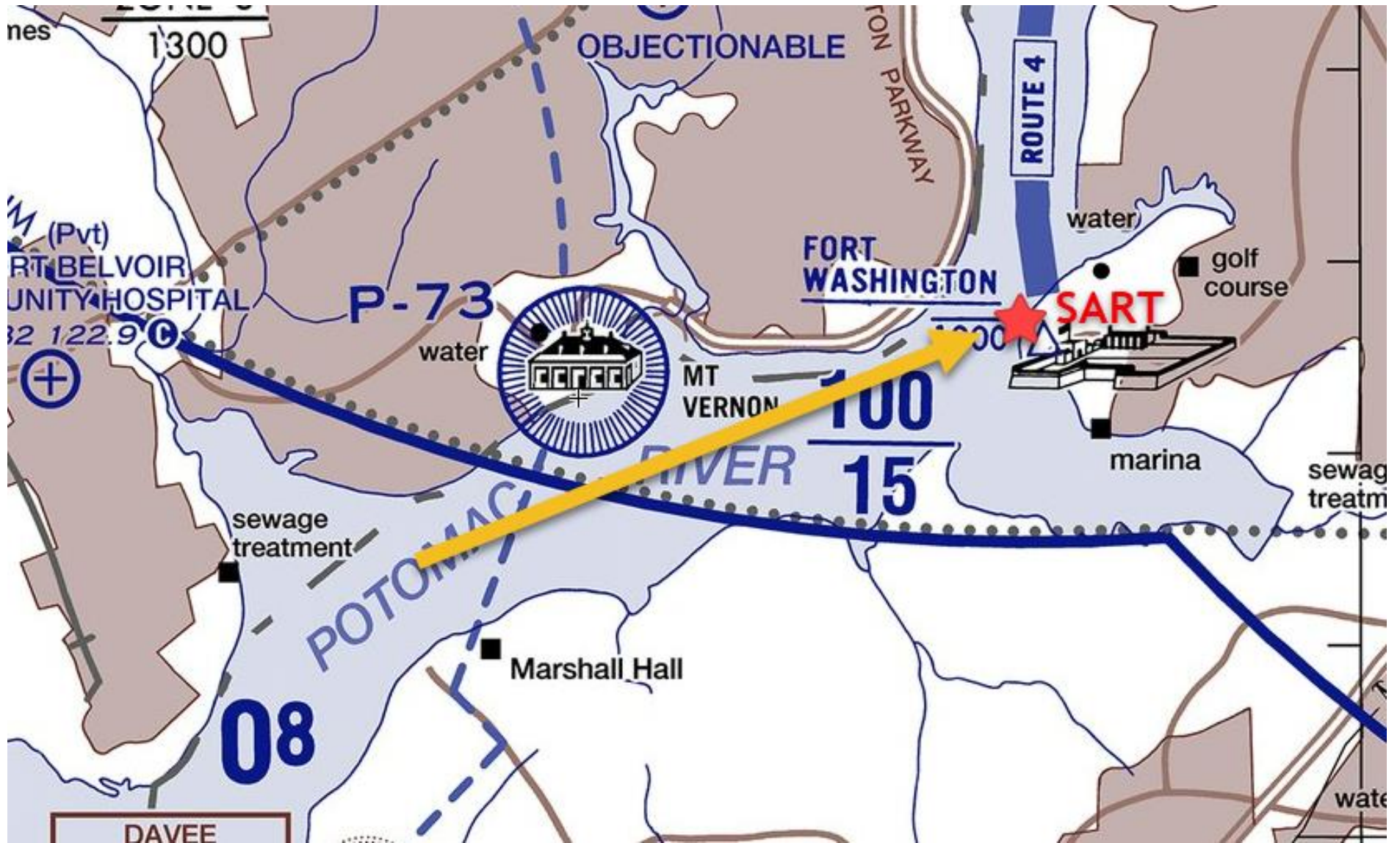
SART Event Cards

Comms:	ATC: As Required NTSB: 22A
Event:	Test Point 9 (REPEAT) REPEAT TEST A POINT IF REQUIRED TEST POINT _____
Start Point:	
Route:	
Altitude:	>150 FT AGL, or Safe Altitude as Required
Groundspeed:	
RDR-1300C Configuration	
Range Rings:	>10 NM
Mode:	
Gain Control:	AS REQUIRED
Predicted Observation:	
Concentric rings should be displayed on RDR-1300C Display.	

Start Time: _____

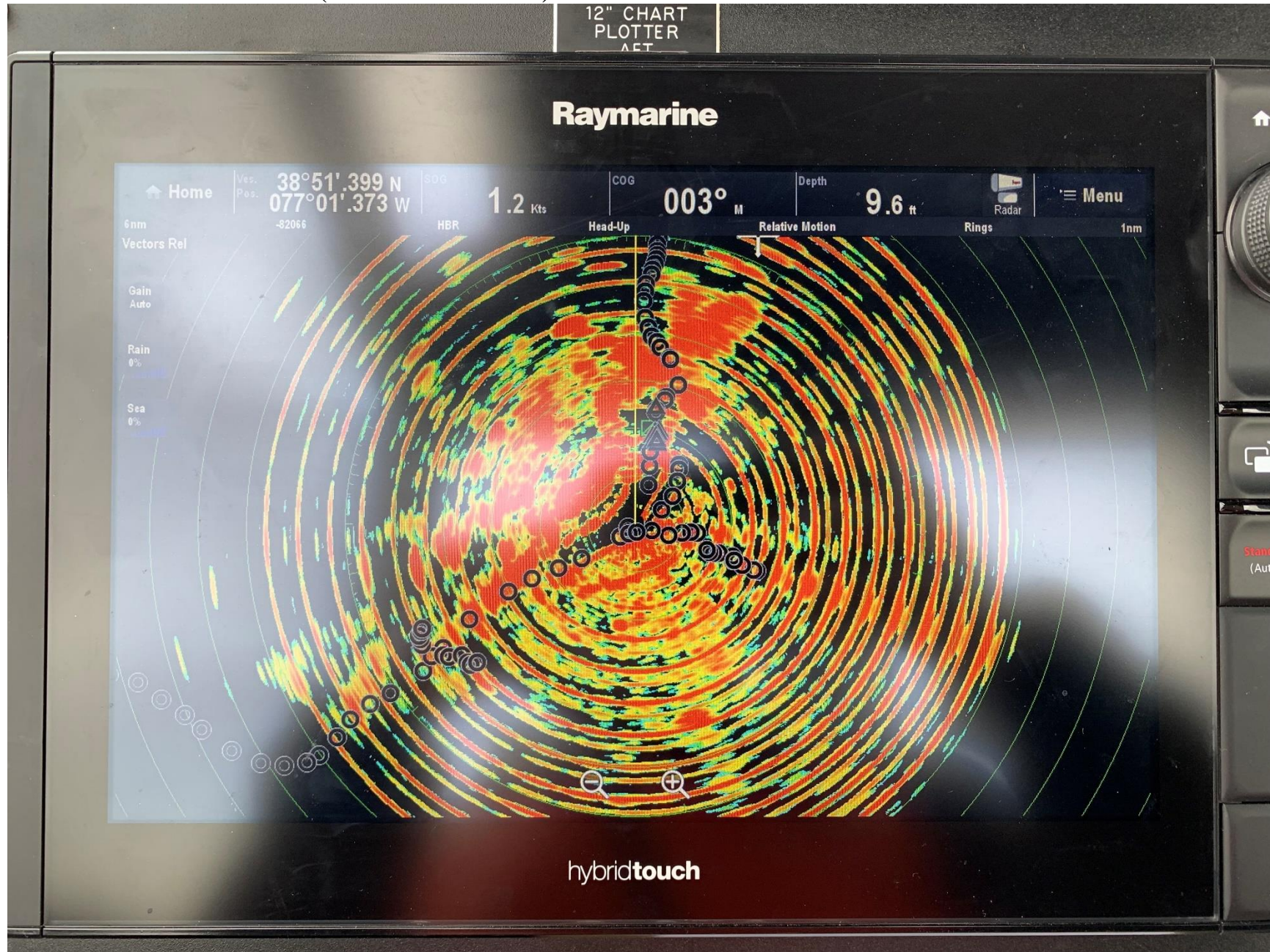
End Time:

Notes:

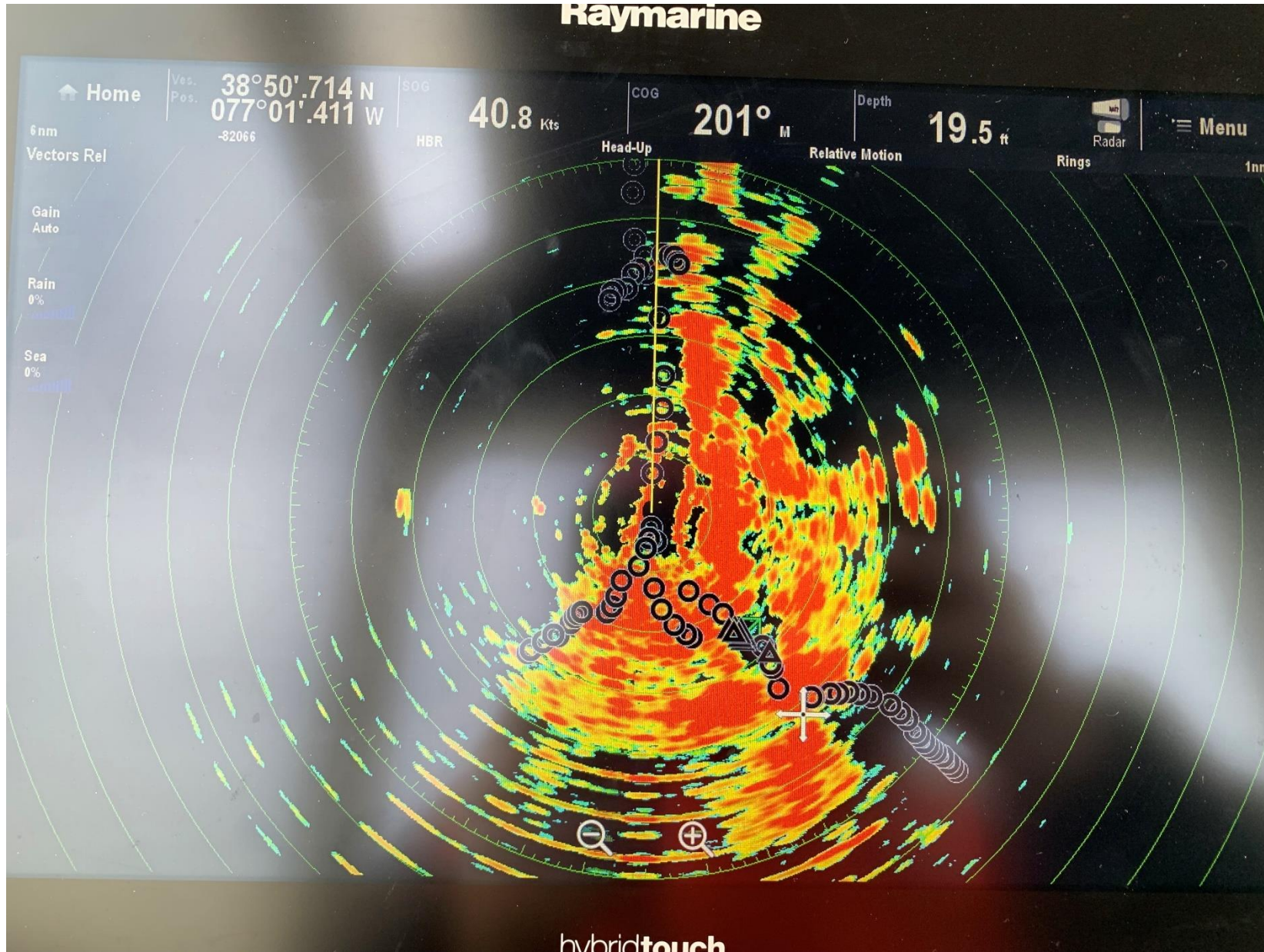




CONCENTRIC RINGS (CLOSE RANGE)



CONICAL RINGS



CONICAL RINGS (Gain Adjustment)

