



Brandi Todd

Scientific Support Coordinator
USCG D8

500 Poydras Street
Suite 1213
New Orleans, LA 70130-3319

Telephone : [REDACTED]
24/7 Emergency: [REDACTED]

Third Coast Midstream Pipeline Spill: Main Pass, LA



Incident Information

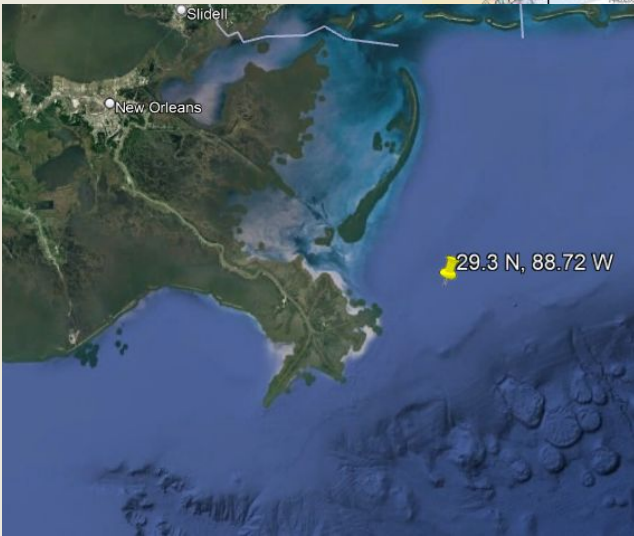
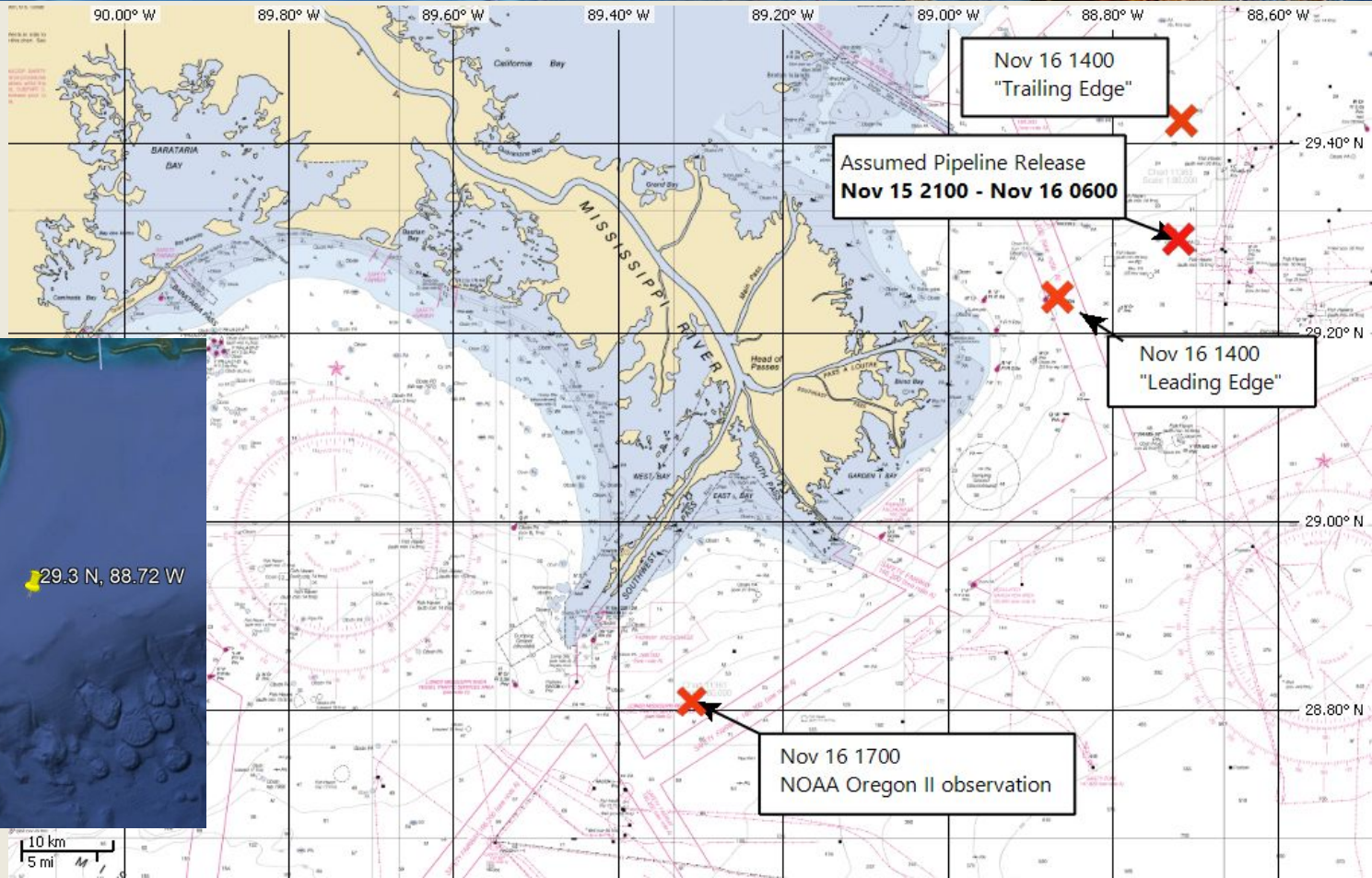
Over the last few days, oil observations from overflights and vessels have reported isolated regions of tarballs and sheens. An area of widespread sheening has not recently been observed in aerial overflights or satellite analysis.

Tarballs likely remain scattered throughout the area but are hard to observe from the air as they no longer produce sheen or be associated with sheens.

This trajectory guidance is focused on providing information on the overall movement of scattered tarballs over the next few days along with a summary of where shoreline impacts may have occurred to direct shoreline survey efforts.



Incident Location





NOAA/NWS Point Forecast

ABOUT THIS FORECAST

Point



Forecast:

[Last Update:](#)

3:19 pm CST Nov 21, 2023

[Forecast Valid:](#)

6pm CST Nov 21, 2023-6pm CST Nov 28, 2023

Tonight NNW wind 15 to 20 kt. Cloudy. Seas around 4 ft.

Wednesday N wind 10 to 20 kt. Partly sunny. Seas 3 to 4 ft.

Wednesday Night NNE wind 10 to 15 kt. Mostly cloudy. Seas 2 to 3 ft.

Thanksgiving Day NNE wind around 10 kt. Isolated showers after noon. Seas around 2 ft.

Thursday Night ENE wind around 10 kt. Scattered showers. Seas around 2 ft.

Friday NE wind 10 to 15 kt. Scattered showers, mainly before noon. Seas around 2 ft.

Friday Night NE wind 10 to 15 kt. A slight chance of showers before midnight. Seas around 3 ft.

Saturday NE wind 10 to 15 kt. Mostly sunny. Seas around 3 ft.

Saturday Night ENE wind 10 to 15 kt becoming ESE after midnight. A slight chance of showers. Seas around 3 ft.



Potential Shoreline Oiling

As the currents moved the oil around the Bird's Foot Delta, northerly winds and the freshwater outflow from the river served to keep oil away from the shorelines. However, there were some short periods of southerly winds that moved oil to the north, potentially impacting shorelines around Southwest and South passes.

Most observations of oil were offshore, though there was a sheen detected by satellite in East Bay, in between South Pass and Southwest Pass.

We expect any shoreline oiling would be in the form of scattered tar balls.

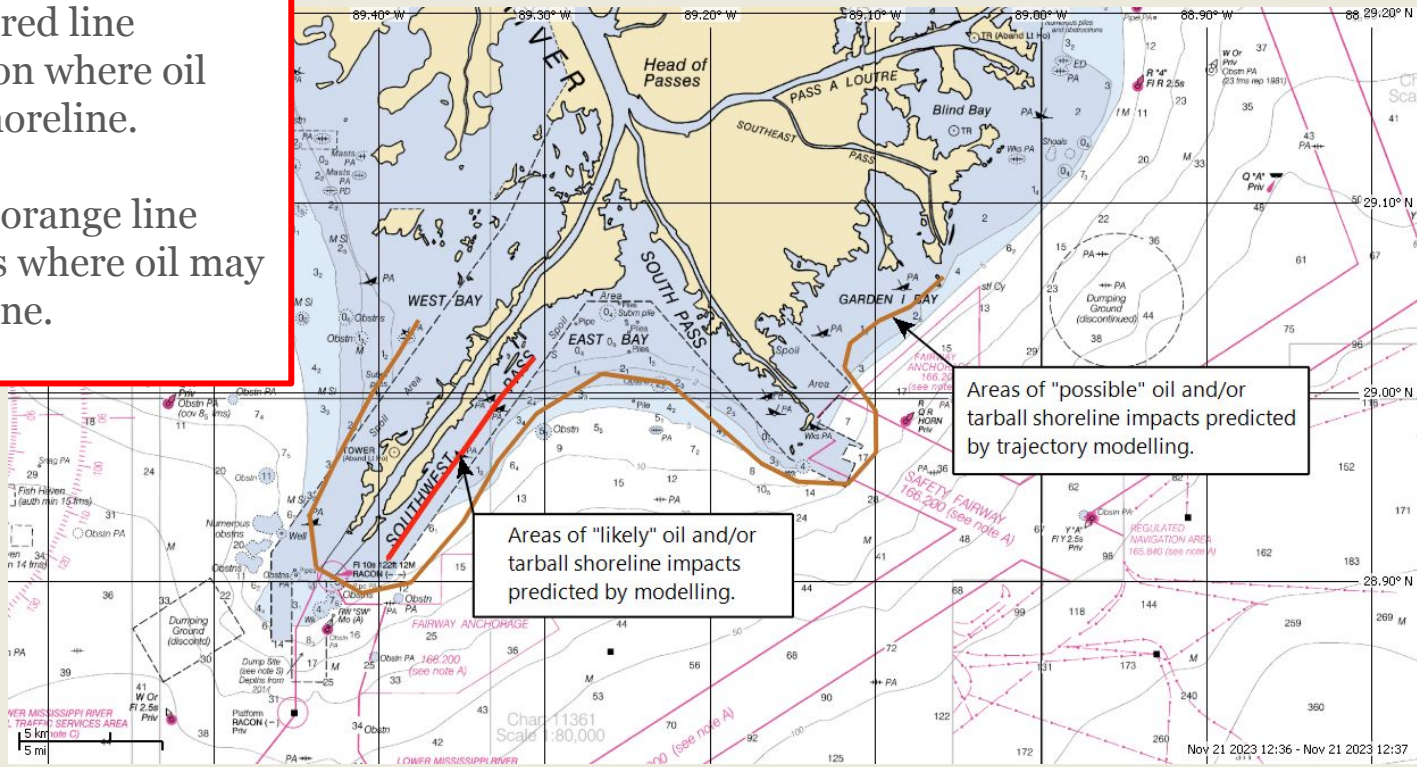
The map on the following page describes the regions of potential oiling.



Potential Shoreline Oiling Map (through 23-Nov 2023)

Shoreline outlined by the red line indicates more likely region where oil may have impacted the shoreline.

Shoreline outlined by the orange line indicate less likely regions where oil may have impacted the shoreline.





Tarball Trajectory Analysis

Winds this afternoon and tonight will be from the north-northwest at 15-20 knots, moving any remaining tarballs to the south, away from the shoreline.

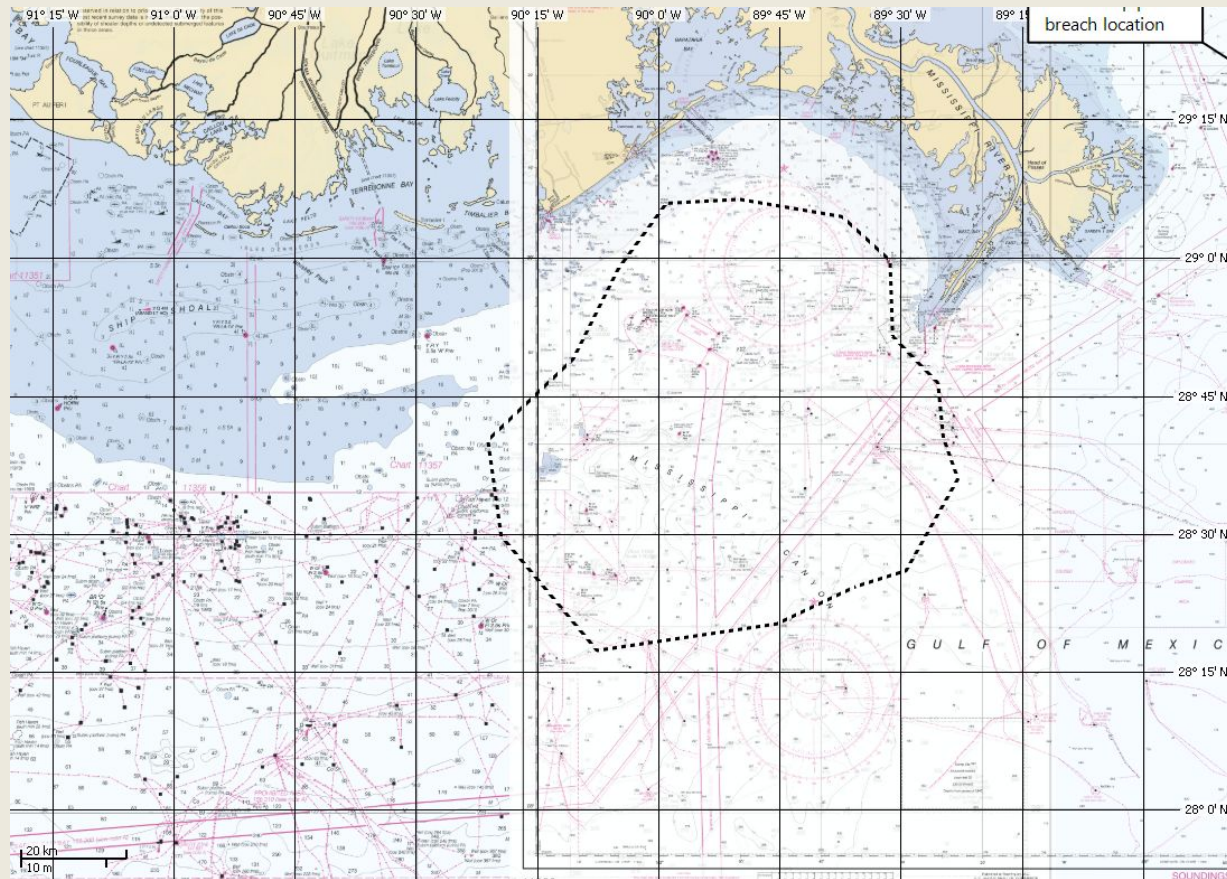
Winds over the next few days are expected to continue to be from the north and northeast, at 10-15 knots.

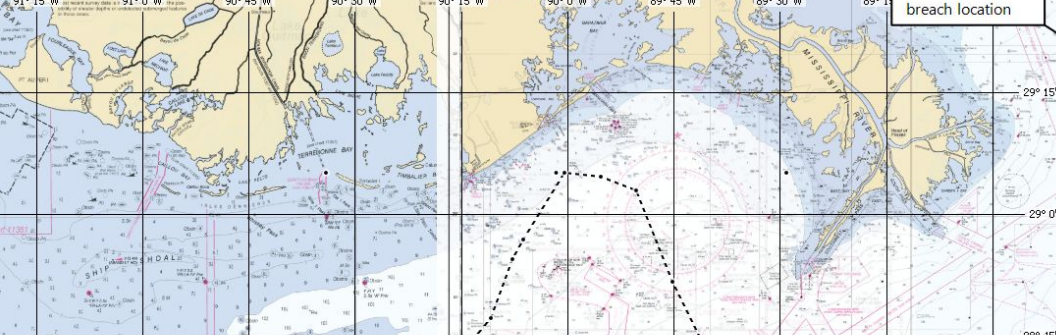
These winds will serve to move the oil farther offshore, while the prevailing currents will move them to the west, resulting a large field of scattered tarballs off shore, southwest of Southwest Pass.



Trajectory Forecast for Tuesday, Nov 22 0800

Dotted line indicates potential region of scattered tarballs.



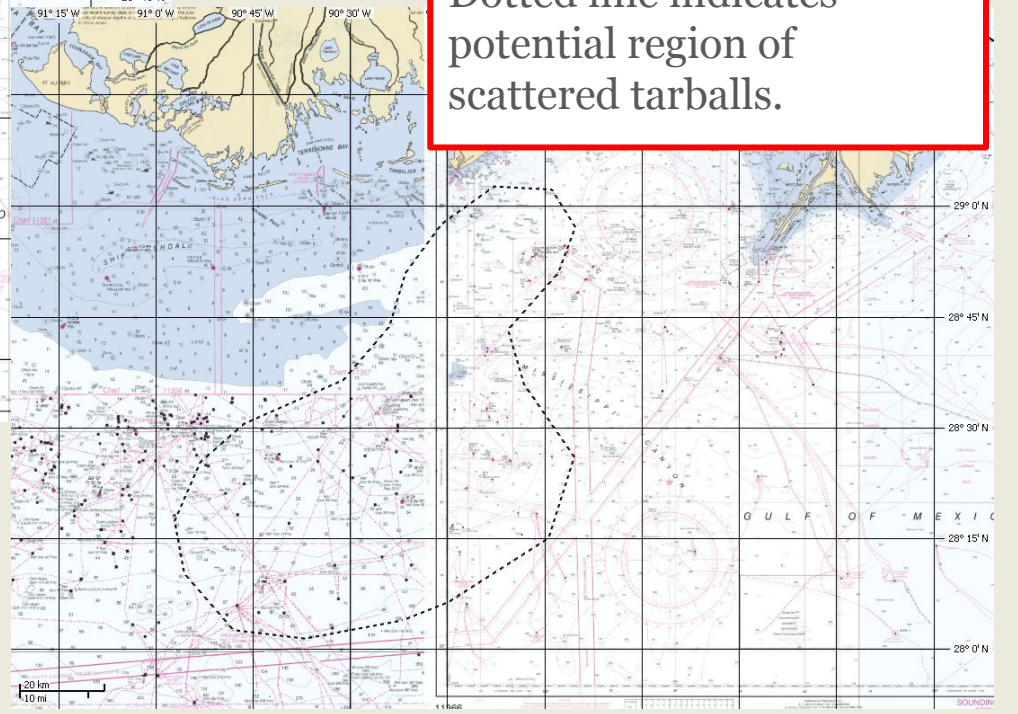


Trajectory Forecast for
Tuesday, Nov 24 0800

Dotted line indicates
potential region of
scattered tarballs.

Trajectory Forecast for
Tuesday, Nov 23 0800

Dotted line indicates
potential region of
scattered tarballs.





Trajectory Metadata

- Model times
 - Start: 2100 11/15/2023
 - End: 2100 11/24/2023
- Oil location initialization
 - Location: [REDACTED]
 - Continuous release, starting 2100 11/15/2023 until 0600 11/16/2023
 - Overflight observations
 - NESDIS satellite analysis
 - Oil: Light Louisiana Sweet, #AD1554
- Winds
 - Point winds from NDBC #42040
 - Gridded winds from NCEP GFS 1/4 degree model
- Currents
 - COOPS NGOFS2 (regular grid)
 - NAVO AmSEAS
 - TAMU/TGLO Tx ROMS model