



# Brandi Todd

Scientific Support Coordinator  
USCG D8

500 Poydras Street  
Suite 1213  
New Orleans, LA 70130-3319

Telephone : [REDACTED]  
24/7 Emergency: [REDACTED]

## Third Coast Midstream Pipeline Spill: Main Pass, LA



# Incident Information

On 16-NOV-23 at 09:10, a pipeline leak was reported to the NRC. Report came from Third Coast Midstream. Sheen on water was observed around 0900.

## **Current assumptions:**

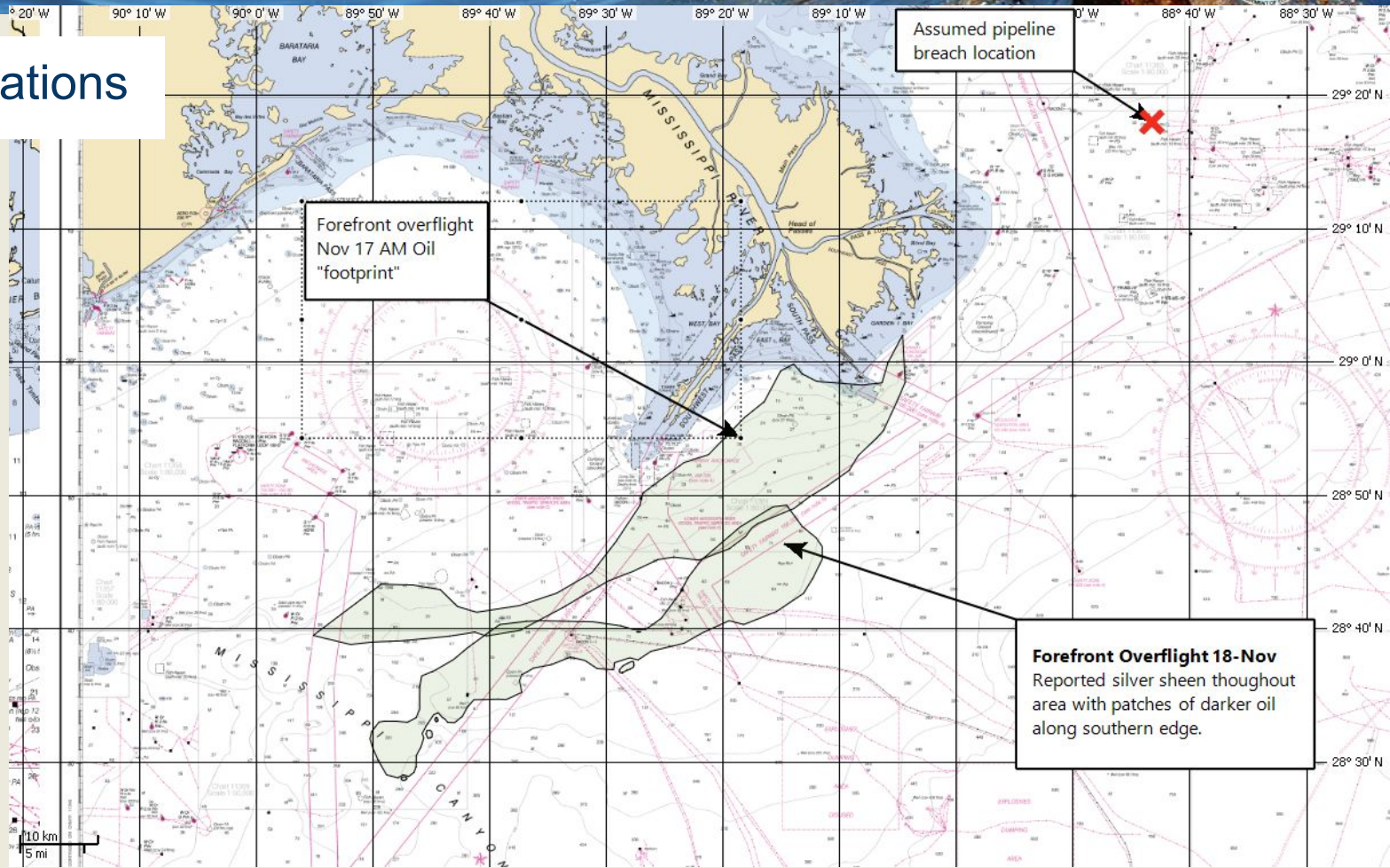
The release started 11/15/2023 2100 and stopped at 11/16/2023 0600, with a total of ~27,000 BBLs. Assumed release location: Latitude: [REDACTED] Longitude: [REDACTED]

Over the last few days, oil has been observed by overflights, satellites and vessels in the region from the source, moving to the southwest, around the bird's foot, and to the southwest of southwest pass.

Overflights this morning found no sheens in the vicinity of the release, and a large region of sheens to the southwest of southwest pass.



# Oil Observations



Assumed pipeline breach location

Forefront overflight Nov 17 AM Oil "footprint"

**Forefront Overflight 18-Nov**  
Reported silver sheen throughout area with patches of darker oil along southern edge.

10 km  
5 mi





# NOAA/NWS Point Forecast

<b>Tonight</b>	N wind around 10 kt. Partly cloudy. Seas 1 to 2 ft.
<b>Sunday</b>	NNE wind 5 to 10 kt becoming E in the afternoon. Partly sunny, then gradually becoming sunny. Seas around 1 ft.
<b>Sunday Night</b>	E wind 5 to 10 kt becoming SSE after midnight. Mostly cloudy. Seas around 1 ft.
<b>Monday</b>	S wind around 10 kt. A slight chance of showers and thunderstorms after noon. Seas around 2 ft.
<b>Monday Night</b>	SSE wind 10 to 15 kt, with gusts as high as 25 kt. A slight chance of showers and thunderstorms, then showers likely and possibly a thunderstorm after midnight. Seas 3 to 5 ft.
<b>Tuesday</b>	S wind 10 to 15 kt becoming NW in the afternoon. Winds could gust as high as 25 kt. Showers likely and possibly a thunderstorm. Seas 4 to 5 ft.
<b>Tuesday Night</b>	NNW wind 15 to 20 kt. A chance of showers and thunderstorms before midnight, then a slight chance of showers. Seas 4 to 5 ft.
<b>Wednesday</b>	NNW wind around 15 kt, with gusts as high as 25 kt. Mostly cloudy. Seas 4 to 5 ft.
<b>Wednesday Night</b>	N wind 10 to 15 kt, with gusts as high as 20 kt. Mostly cloudy. Seas around 4 ft.

## ABOUT THIS FORECAST

Point  
Forecast:



Last Update: 3:19 pm CST Nov 18, 2023

Forecast Valid: 6pm CST Nov 18, 2023-6pm CST Nov 25, 2023



# Trajectory Analysis

With limited information about remaining floating oil, this analysis is initialized primarily with the overflight report from this morning, which indicated mostly silver sheen with some darker patches of oil along the southern edge.

Winds and currents combine to move the oil primarily to the west and southwest. Observations have indicated overwashed oil that may not be moved much by the winds – this analysis uses a range of windage values to capture possible movement of oil just under the surface.

Winds are expected to be from the N and NE tonight and Sunday at 5-10 knots, shifting to be from the south Monday and Tuesday. Ocean currents are a strong factor in transport in the area, and will carry the oil primarily to the west, with the upcoming southerly winds moving the oil northward. The models also indicate a gyre that may move some oil north up towards Baratavia Bay in the next few days depending on persistence of floating oil.

There were some potential shoreline impacts predicted in the trajectory at Southwest Pass yesterday, but **no shoreline impacts are predicted in the next two days.**

Maps on the following slides shows the trajectory forecast for Sunday and Monday Nov 19-20.

# Trajectory Forecast for Sunday, Nov 18 0800

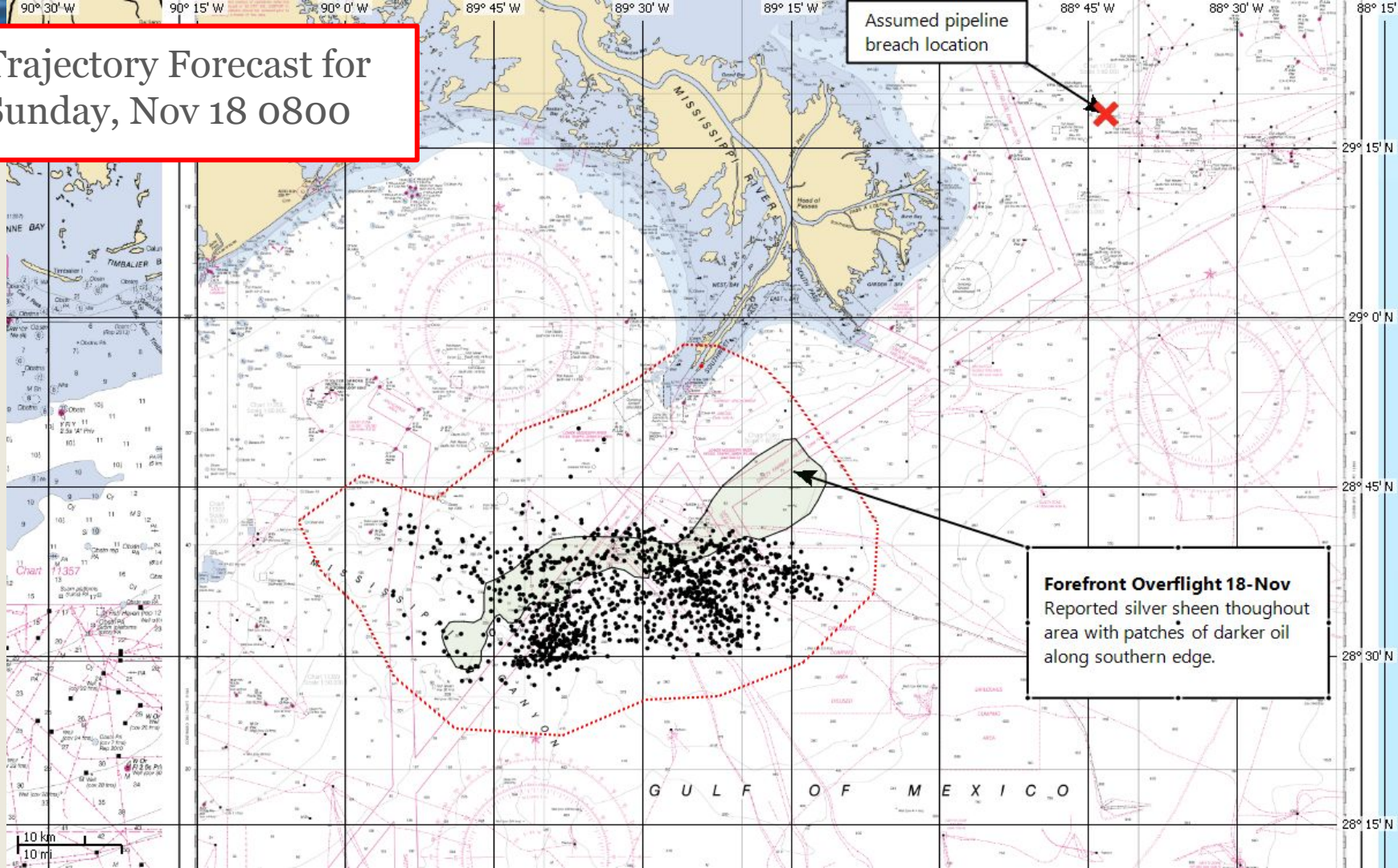
Assumed pipeline breach location



**Forefront Overflight 18-Nov**  
Reported silver sheen throughout area with patches of darker oil along southern edge.



G U L F O F M E X I C O

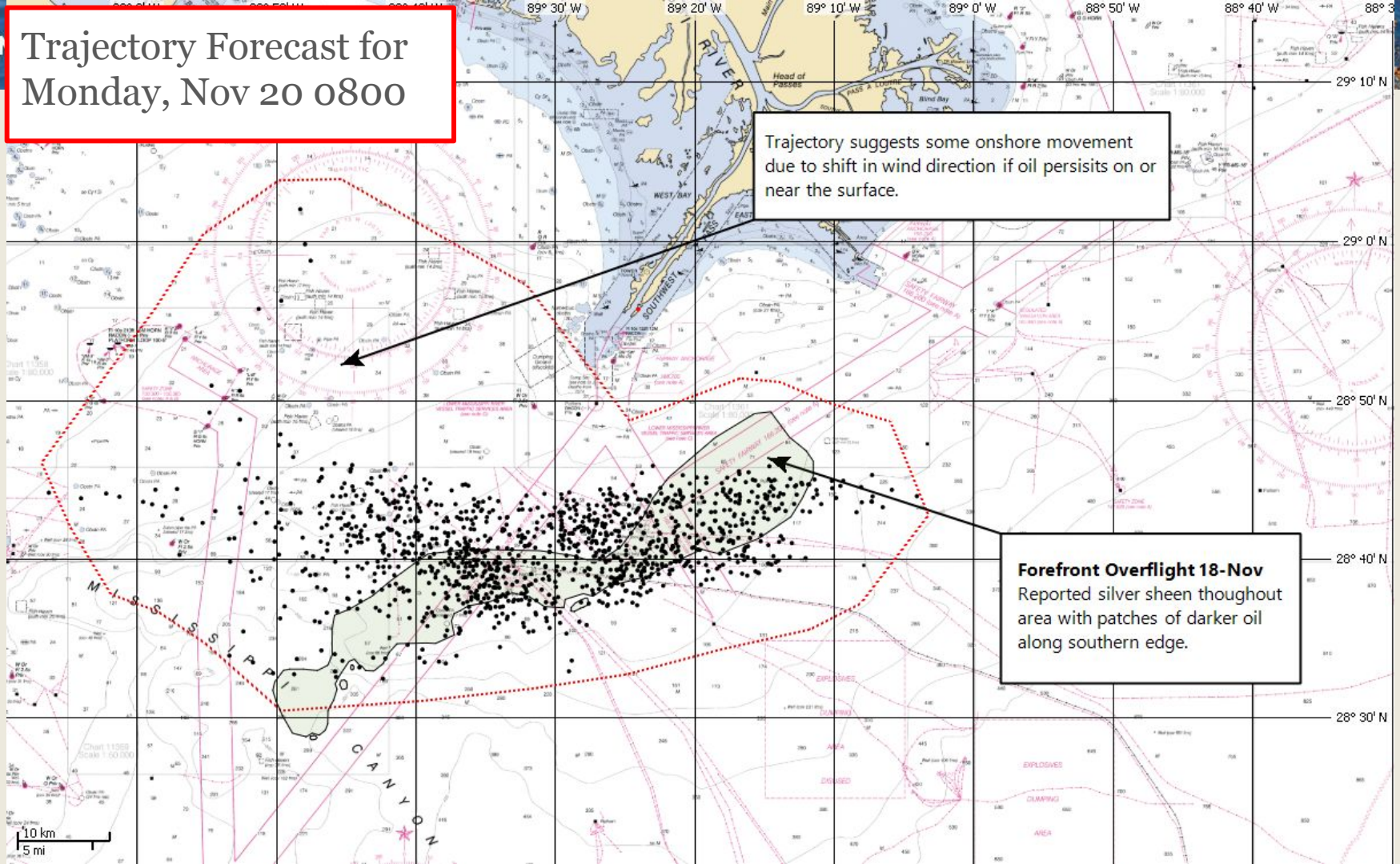




# Trajectory Forecast for Monday, Nov 20 0800

Trajectory suggests some onshore movement due to shift in wind direction if oil persists on or near the surface.

**Forefront Overflight 18-Nov**  
Reported silver sheen throughout area with patches of darker oil along southern edge.





# Trajectory Metadata

- Model times
  - Start: 0900 11/17/2023
  - End: 0800 11/20/2023 (end of available ocean current model data)
- Source
  - Polygon provided from Forefront AM overflight representing area of sheen with patches of dark oil
  - Oil: Light Louisiana Sweet, #AD1554
- Winds
  - Point winds from NDBC #PSTL1 from model start to 1730 11/18/2023
  - Gridded winds from NCEP GFS 1/4 degree model from then onward
- Currents
  - COOPS NGOFS2