



# Brandi Todd

Scientific Support Coordinator  
USCG D8

500 Poydras Street  
Suite 1213  
New Orleans, LA 70130-3319

Telephone : [REDACTED]  
24/7 Emergency: [REDACTED]

## Third Coast Midstream Pipeline Spill: Main Pass, LA



# Incident Information

On 16-NOV-23 at 09:10, a pipeline leak was reported to the NRC. Report came from Third Coast Midstream. Sheen on water was observed around 0900.

The release is thought to have started 11/15/2023 2100 and stopped at 11/16/2023 0600

The RP now estimates the total release as 27,000 BBLS

NOAA assumed release location: Latitude: 29° 17' 50" N Longitude: 088° 43' 05" W

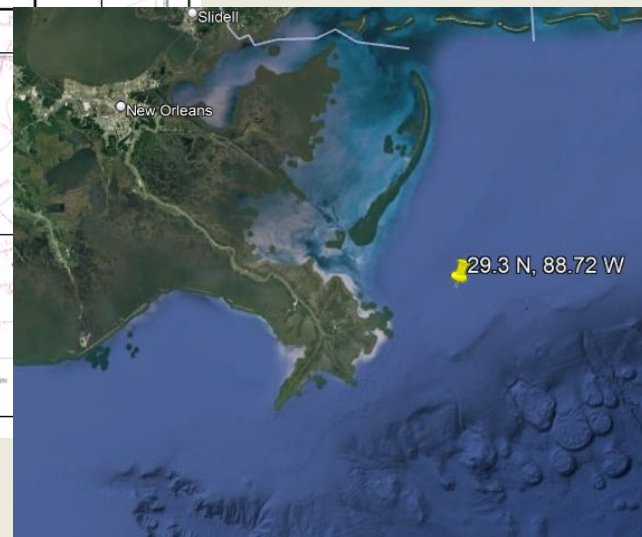
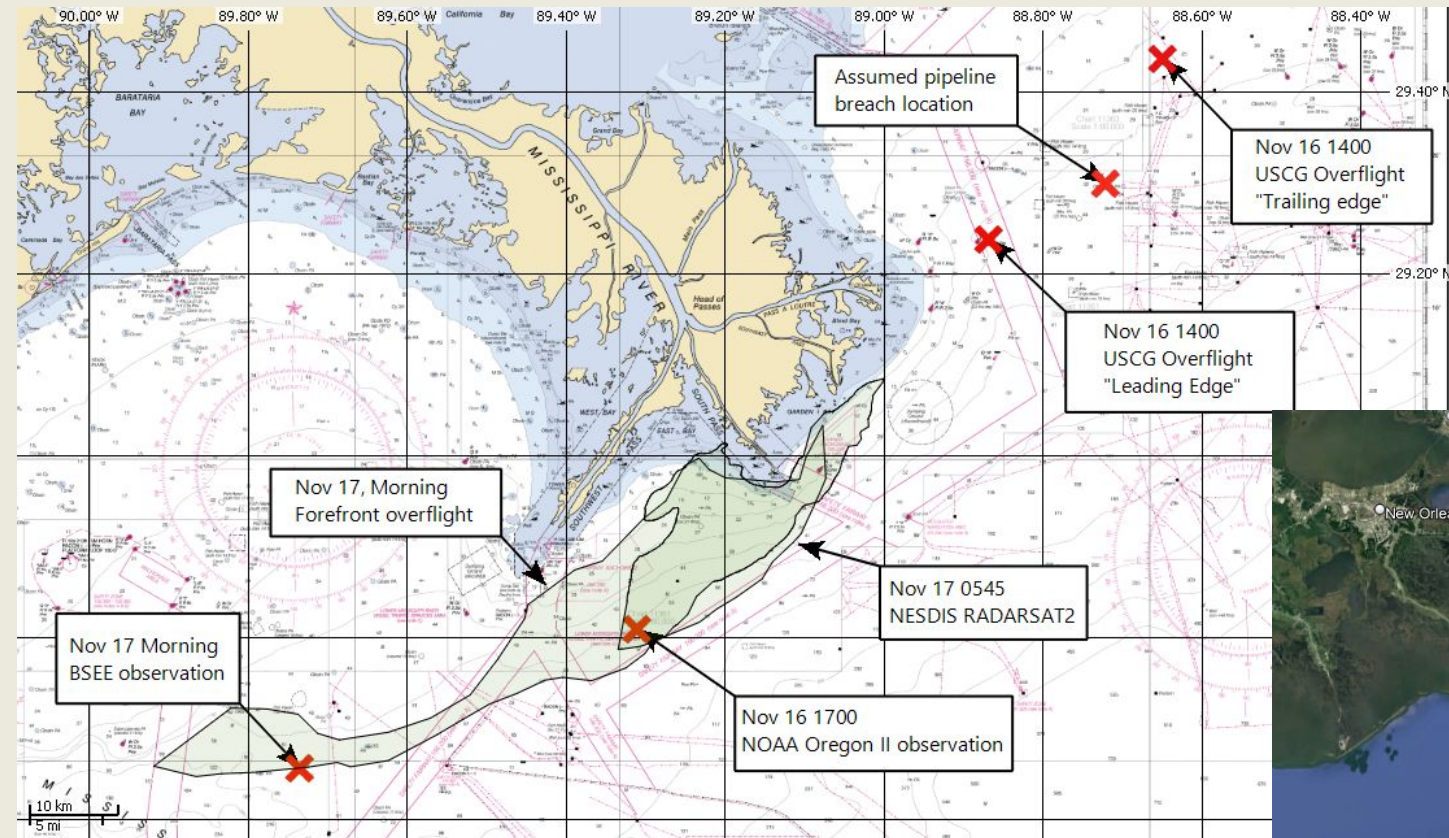
Friday AM overflights saw no oil on the water in the vicinity of the release.

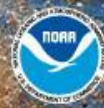
Satellite imagery indicated a potential slick south of the the region between South Pass and Southwest Pass early this morning.

Overflights in the morning observed sheens and patches of dark oil in the region south of Southwest Pass.



# Incident Location





# NOAA/NWS Point Forecast

## ABOUT THIS FORECAST

**Point Forecast:** 28.88°N 89.59°W

[Last Update:](#) 11:47 am CST Nov 17, 2023

[Forecast Valid:](#) 3pm CST Nov 17, 2023-6pm CST Nov 23, 2023

**This Afternoon** Variable winds 5 kt or less. Mostly sunny. Seas around 3 ft.

**Tonight** NNE wind 5 to 10 kt becoming NNW in the evening. Partly cloudy. Seas 2 to 3 ft.

**Saturday** N wind around 10 kt. Partly sunny. Seas around 2 ft.

**Saturday Night** N wind around 10 kt. Partly cloudy. Seas 1 to 2 ft.

**Sunday** NE wind 5 to 10 kt becoming ESE in the afternoon. Mostly sunny. Seas around 1 ft.

**Sunday Night** SE wind 5 to 10 kt. Mostly cloudy. Seas 1 to 2 ft.

**Monday** SSE wind 10 to 15 kt. A slight chance of showers. Seas 2 to 3 ft.

**Monday Night** SSE wind around 15 kt. Showers likely and possibly a thunderstorm. Seas around 3 ft.

**Tuesday** S wind around 15 kt becoming NW in the afternoon. Showers likely and possibly a thunderstorm. Seas 3 to 4 ft.





# Trajectory Analysis

Winds and currents have moved the oil released from the pipeline to the southwest - curving south, around the Mississippi River Delta.

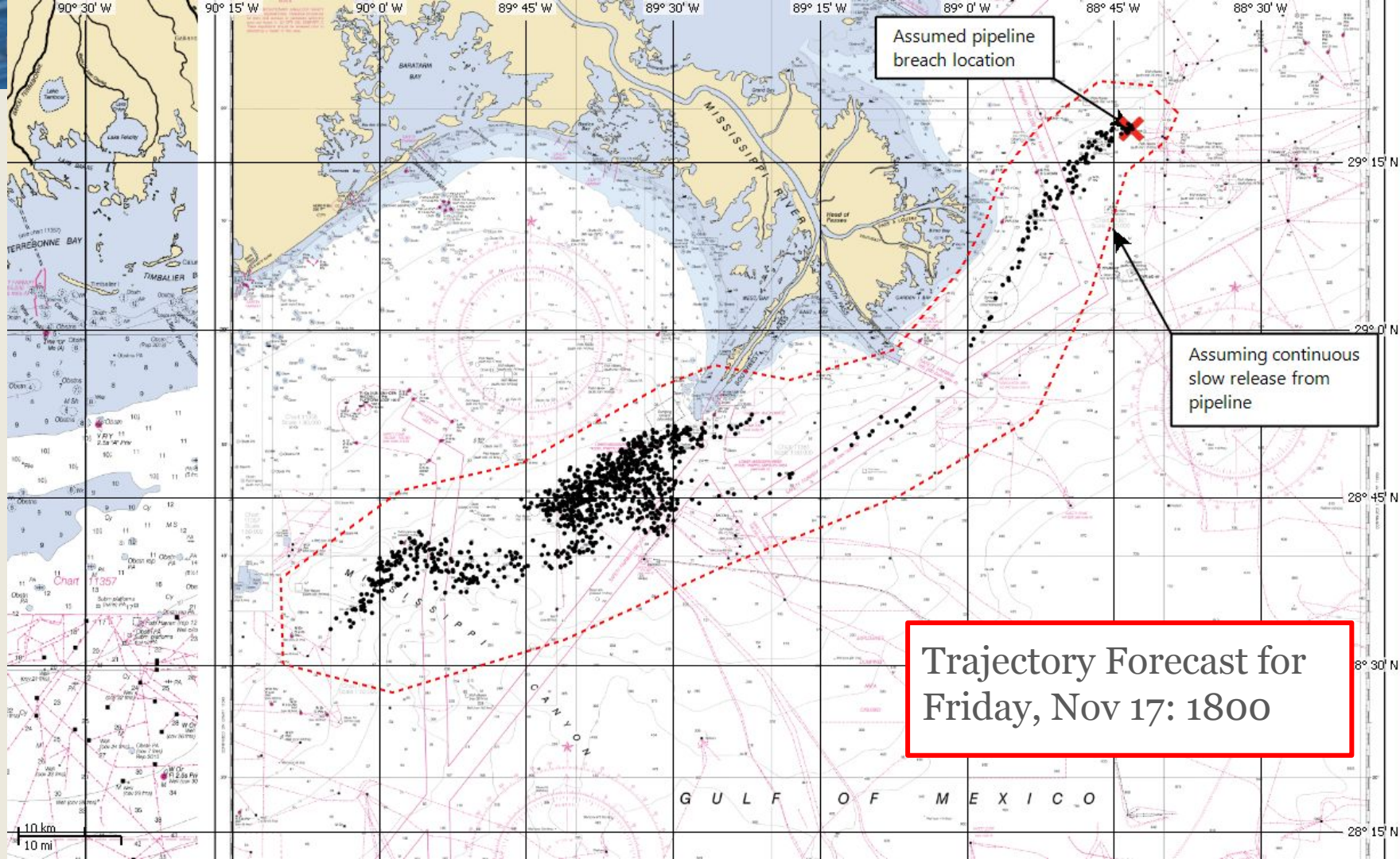
Ocean currents are a strong factor in transport in the area, and will continue carry the oil to the west, while the north winds will tend to move it further offshore.

However, the models indicate a gyre that may move some oil north up towards Barataria Bay in the next few days.

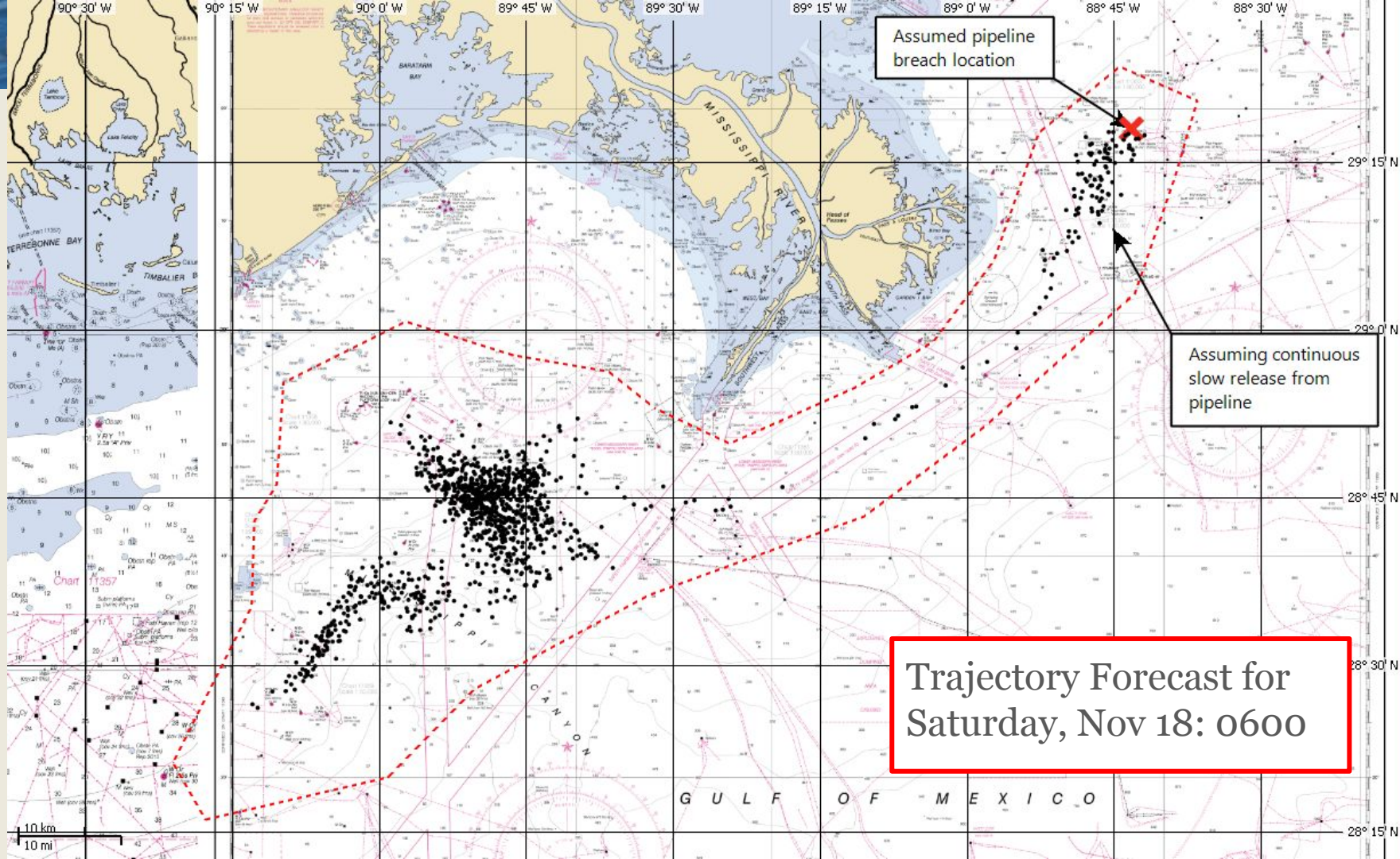
Fate estimates suggest that ~30% of the Louisiana sweet crude will have evaporated, and up to ~20% dispersed into the water column. The oil remaining on the water surface may emulsify, eventually breaking up into scattered patties and sheen. As the winds calm down, there may be an increase in visible oil on the surface.

Maps on the following slide shows the trajectory forecast for:

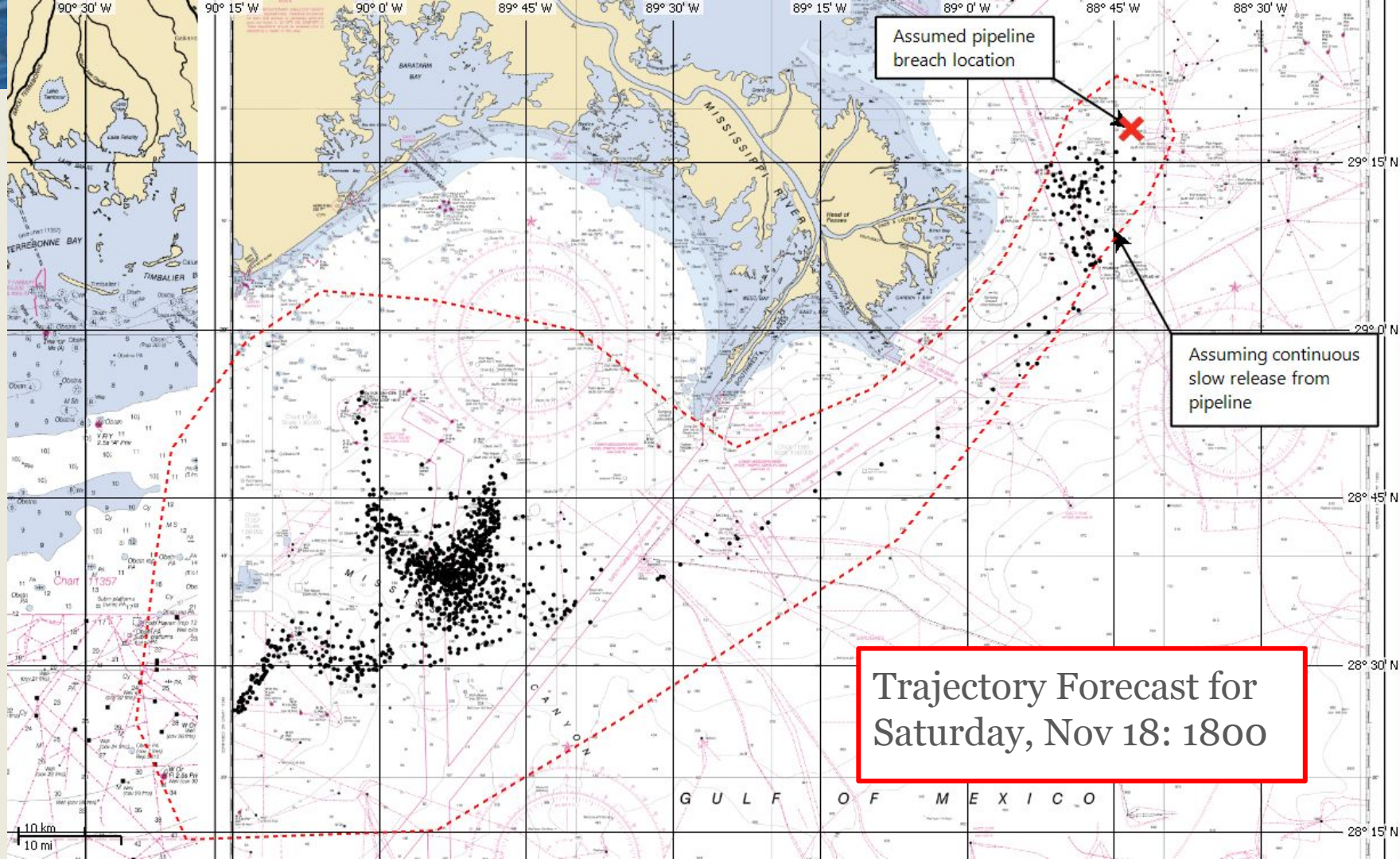
1800 Nov 17 though 0600 Nov 19th (Sunday).











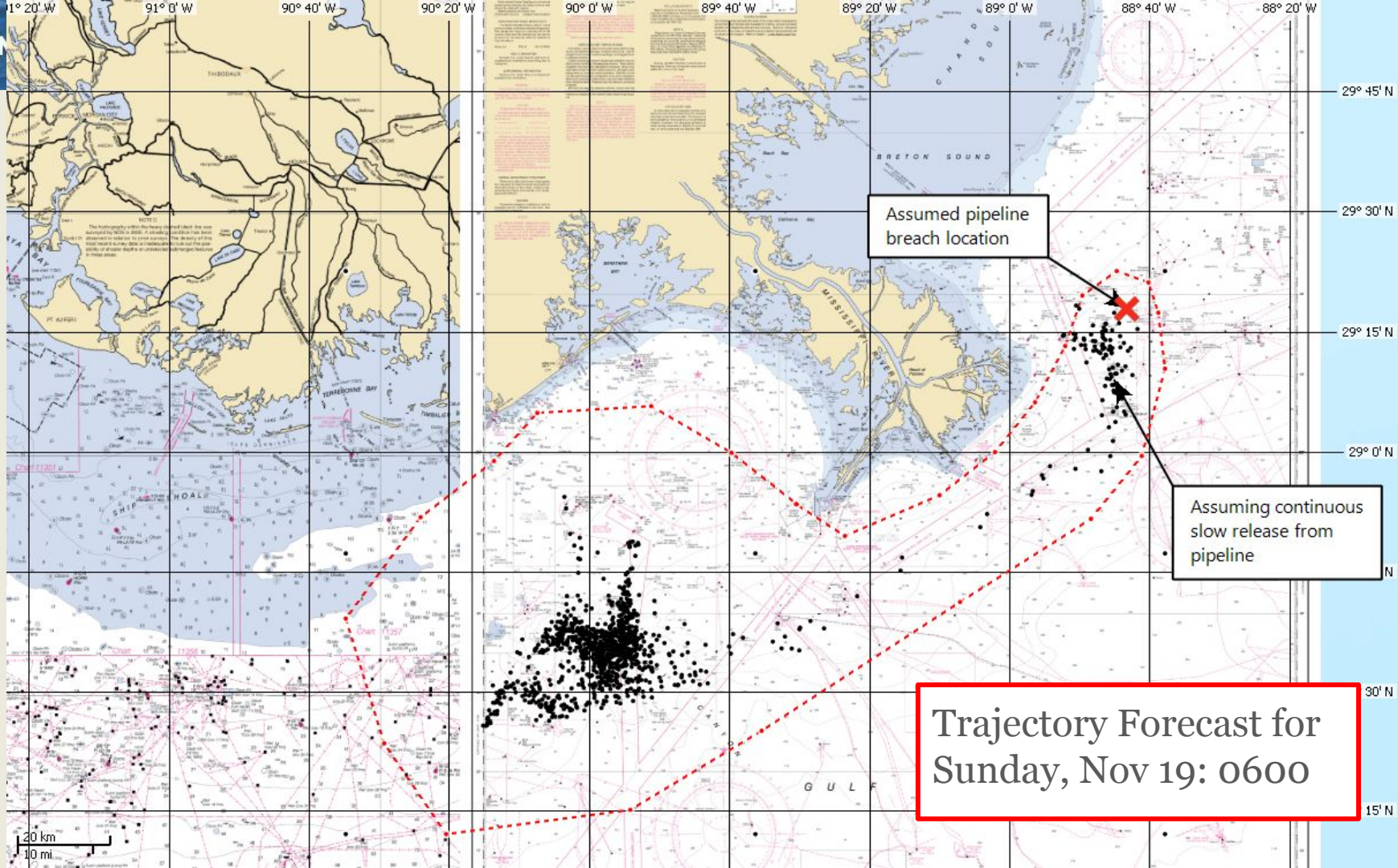
Assumed pipeline  
breach location

Assuming continuous  
slow release from  
pipeline

Trajectory Forecast for  
Saturday, Nov 18: 1800

10 km  
10 mi







# Trajectory Metadata

- Model times
  - Start: 0600 11/16/2023
  - End: 0600 11/19/2023
- Spill Initialization
  - Continuous slow release from assumed pipeline breach
    - Location: 29.43 N, 88.72 W
  - Surface oil polygon from overflight – assumed time of 08:00 11/17/2023
  - Oil: Light Louisiana Sweet, #AD1554
- Winds
  - Gridded winds from NCEP GFS 1/4 degree model
- Currents
  - American Seas (AMSEAS) Navy Coastal Ocean Model