



Brandi Todd

Scientific Support Coordinator
USCG D8

500 Poydras Street
Suite 1213
New Orleans, LA 70130-3319

Telephone : [REDACTED]
24/7 Emergency: [REDACTED]

Third Coast Midstream Pipeline Spill



Incident Information

On 16-NOV-23 at 09:10, a pipeline leak was reported to the NRC. Report came from Third Coast Midstream. Sheen on water was observed around 0900 at location: 29° 17'50"N–88°43'05"W

An overflight at 1400 CST observed a Latest observations:

14:00 central overflight reported a slick is 3-4 miles wide, with dark oil scattered throughout

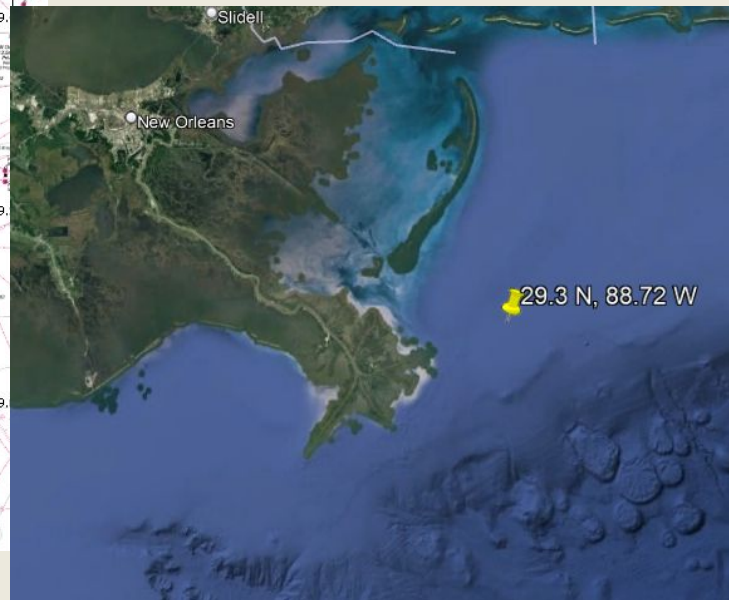
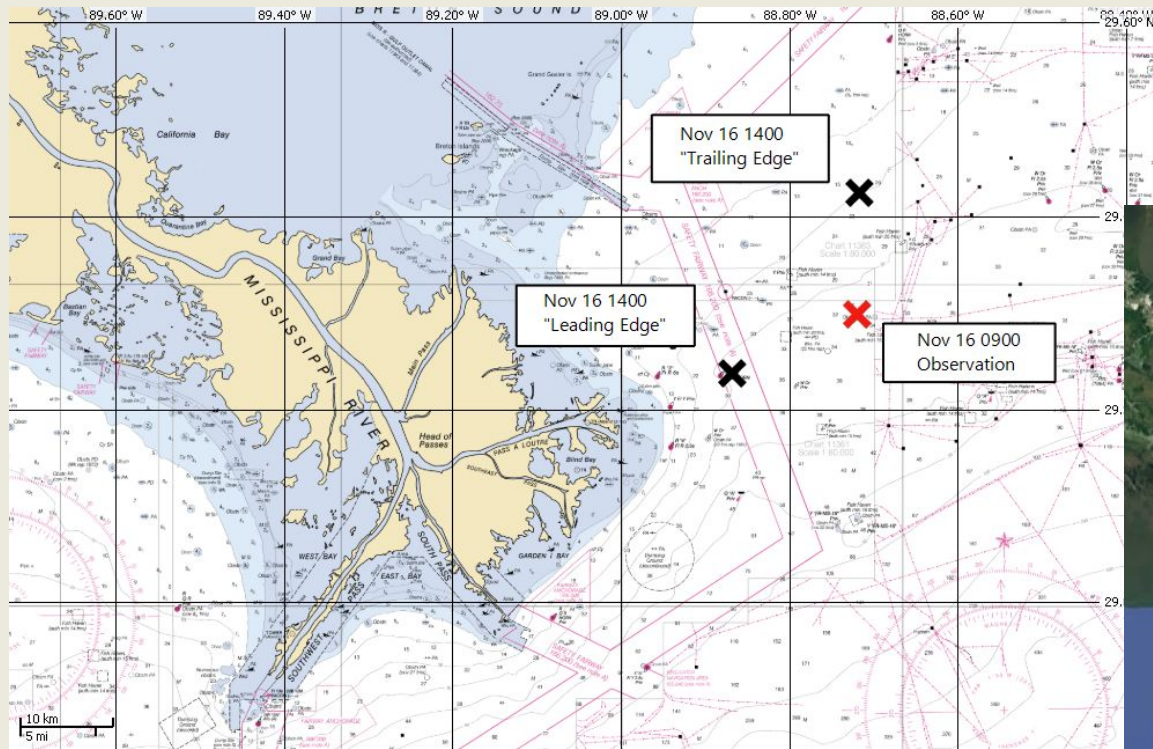
Leading edge: 29°14'18"N–88 52'3"W

Trailing edge :29°25'30"N–88°43' 00"W

A continuous release is likely to occur over the next four days as the repair crew mobilizes to site.



Incident Location





NOAA/NWS Point Forecast

Detailed Forecast

This Afternoon ENE wind around 15 kt, with gusts as high as 20 kt. Mostly cloudy. Seas around 5 ft.

Tonight ENE wind 10 to 15 kt, with gusts as high as 20 kt. Mostly cloudy. Seas 3 to 5 ft.

Friday NE wind 5 to 10 kt. Partly sunny. Seas 2 to 3 ft.

Friday Night N wind 5 to 10 kt. Mostly cloudy. Seas around 2 ft.

Saturday N wind around 10 kt. Mostly sunny. Seas around 2 ft.

Saturday Night N wind around 10 kt. Mostly clear. Seas around 1 ft.

Sunday NE wind 5 to 10 kt becoming SE in the afternoon. Mostly sunny. Seas around 1 ft.

Sunday Night SSE wind 5 to 15 kt. A slight chance of showers. Seas around 1 ft.

ABOUT THIS FORECAST

Point 29.29°N 89.07°W

Forecast:

Last Update: 3:20 am CST Nov 16, 2023

Forecast Valid: 3pm CST Nov 16, 2023-6pm CST Nov 22, 2023



Trajectory Analysis

Winds and currents will combine to move oil released from the pipeline to the southwest - curving south of the Mississippi River Delta.

Winds are moderately strong from the ENE today (15-12 knots) and will relax Friday and become more northerly. Ocean currents are a strong factor in transport in the area, and will carry the oil at ~1 knot to the southwest around the delta. Due to the buffering effects of the buoyant river outflow, **no shoreline impacts are expected.**

Fate estimates suggest ~30% of the Louisiana sweet crude evaporating and up to ~20% being dispersed into the water column over 24 hours. The oil remaining on the water surface may emulsify, eventually breaking up into scattered patties and sheen.

Map on the following slide shows the trajectory forecast for 2000 Nov 17 (Friday).



Trajectory prediction for 2000, Nov 17 2023

Model is initialized using an 0600 Nov 16 release from the “trailing edge” (pipeline rupture) location.

If the r

