



## MEMORANDUM FOR RECORD

Witness Location

**Peter Wentz**  
**Air Safety Investigator**  
**Eastern Region Aviation**

**ERA19FA154**

On April 4, 2019 the first witness located at [REDACTED], Statesville, NC witnessed the accident airplane cross from the west to east from his back deck. Figure 1 shows the distance (4.6 miles) between the witness and the airport. The report states the accident airplane departed west from Statesville Regional Airport (SVH) and made a right 180° turn traveling east between SVH and the witness.



Figure 1 – Witness #1 location relative to SVH.

The second witness was located at [REDACTED], Cleveland, NC. This witness observed the accident airplane above the tree line in a nose down attitude. Figure two show the distance between the witness and the accident site about 1 mile to the west.

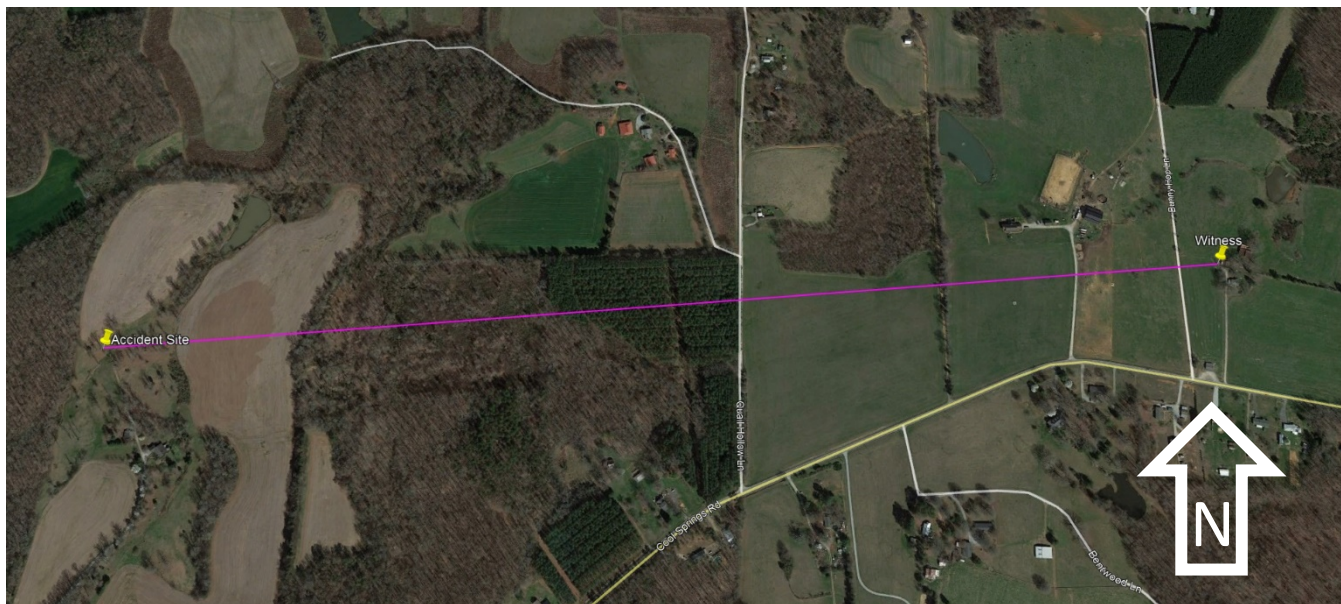


Figure 2 – Witness #2 location relative to accident site.