

ATK 32050

The following defects were noted on the sleeper car that was positioned as the third car behind the two locomotive train consist remaining upright.

The B-end of the passenger car rear trailing axle showed signs of all four wheels were off the rail. The left number two wheel had evidence of heavy impact marks on the wheel flange as noted in the photos. The left number one brake rotor showed evidence of dragging. The B-end stabilizer bars were bent and damaged. The B-end coupler right side bump stop was broken and impact marks on the top of the coupler shank from the buffer casting. The B-end right side truck frame had signs of dragging. The B-end right side spring saddle had signs of dragging.

The following interior inspection defects were noted.

The stateroom 13 door was off its track. The stateroom 11 window was missing. The interior A, B, and D room access doors were binding.

32050















ATK 32085

The following defects were noted on the sleeper car that was positioned as the fourth car behind the two locomotive train consist remaining upright.

All eight wheels were derailed. The L1 wheel was damaged extensively in a saw tooth pattern. . The R1, R3, R4, L1, and L2 wheel adapters missing. The R2 wheel adapter was out of place. The R3 and R4 truck springs missing. The L1 and L2 equalizer beams were missing. The R3 and R4 equalizer beams were out of position. The BL shock absorber was missing. The B end air brake top rod bent. The L3 tread brake unit broken. The AR side coupler bumper block missing.

The following interior inspection defects were noted.

The A end vestibule door dislodged from track. The B end vestibule door inoperable. The stateroom 7 bunk dislodged from safety latch.



32085







ATK 38058

The following defects were noted on the diner car that was positioned as the fifth car behind the two locomotive train consist.

All eight wheels were derailed with the car body remaining upright. The L1 and L2 wheels were damaged extensively with impact marks and rail burn. The L3, L4, and R4 wheel adapters out of position. The L1, L2 and L4 truck springs missing. The L3 truck spring was not in position. The L1 and L2 equalizer beams were not in position. The R3 and R4 outer equalizer beams were missing. The R3 and R4 shock absorbers damaged. The L1 and L2 truck tie bar plates missing. The A end brake pipe and cut out cock damaged. The B end coupler bumper stops missing. The A end bumper stops damaged.

The following interior inspection defects were noted.

The A end vestibule door diaphragm dislodged.



38058





WARNING
DO NOT OPERATE
MACHINE WITHOUT
PROPERLY ADJUSTED
SAFETY DEVICES































ATK 34059

The following defects were noted on the coach car that was positioned as the sixth car behind the two locomotive train consist remaining upright.

The passenger car showed signs of all eight wheels were off the rail. The L1 wheel bearing cap bolt sheared off. The A and B end coupler bumper stops were damaged. The A end brake pipe and cut out cock damaged. The A end coupler buffer casting damaged. The BL side handhold broken.

The following interior inspection defects were noted.

The left and right-side entry doors were damaged. The end vestibule door diaphragm damaged. Top left side number one and two windows damaged. Seat 77, 78, 73, and 74 side windows dislodged. The seats 1, 2, 5, 6, 17, 18, 25, 26, 29, 30, 33, 34, 79 and 80 were dislodged.









































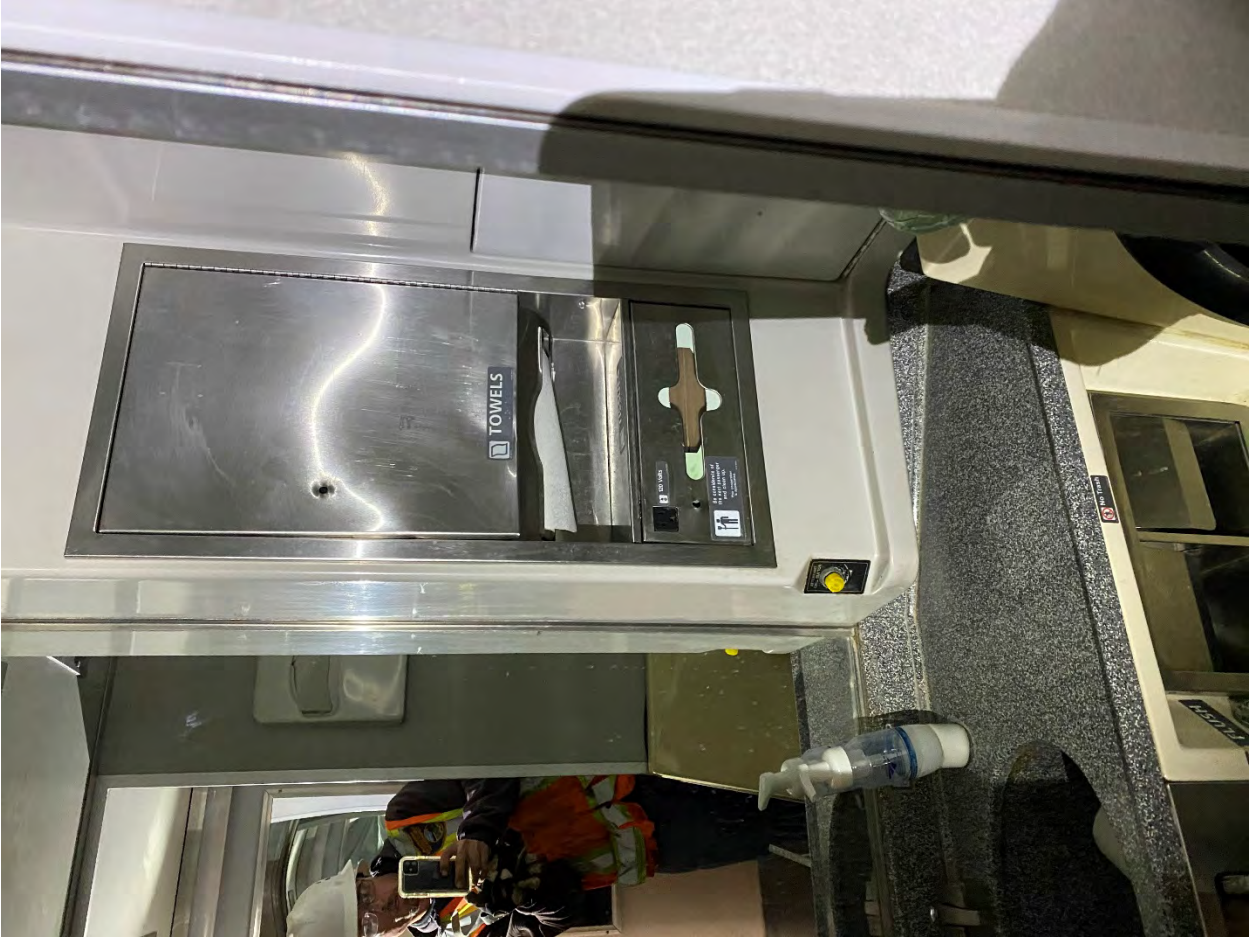






































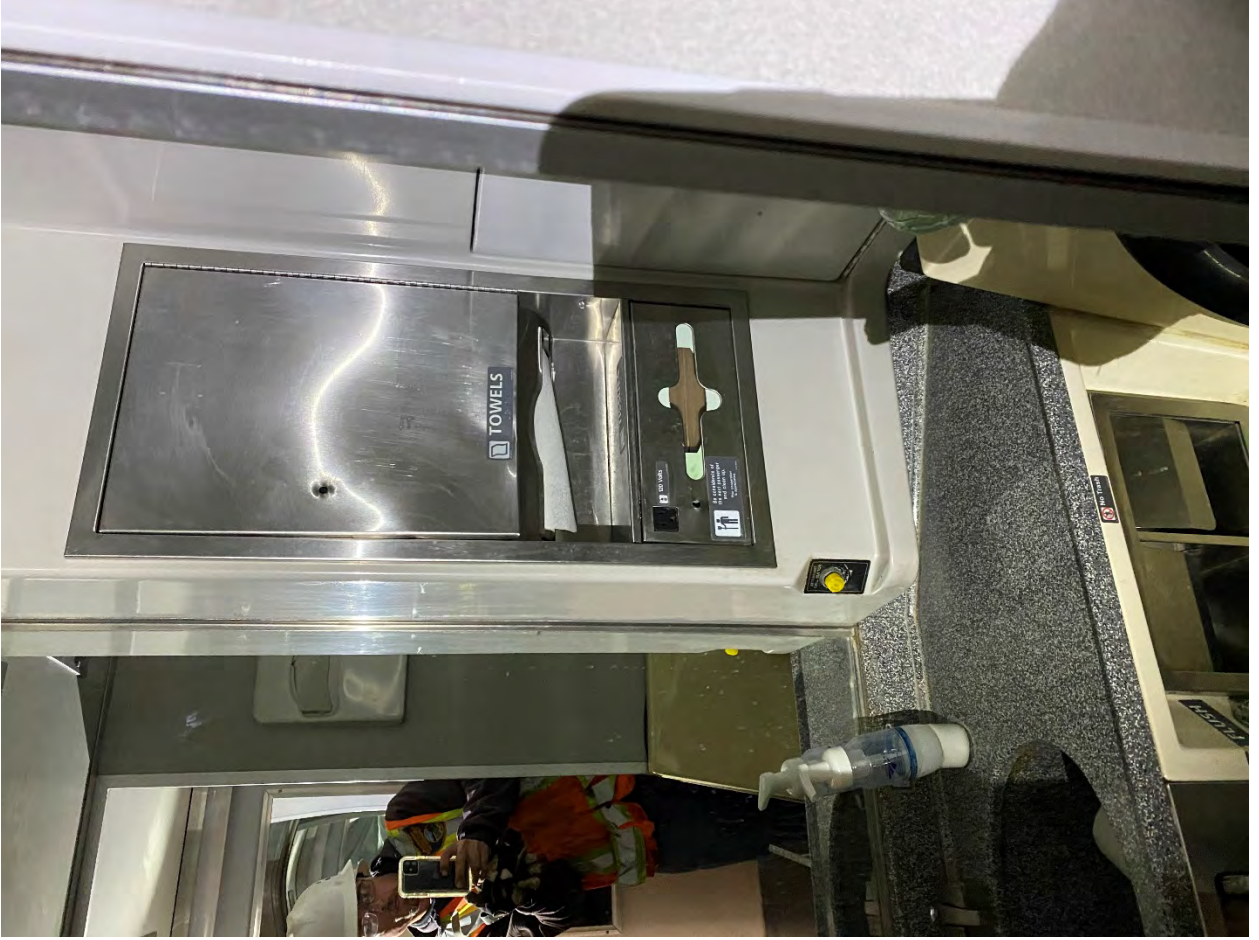






















































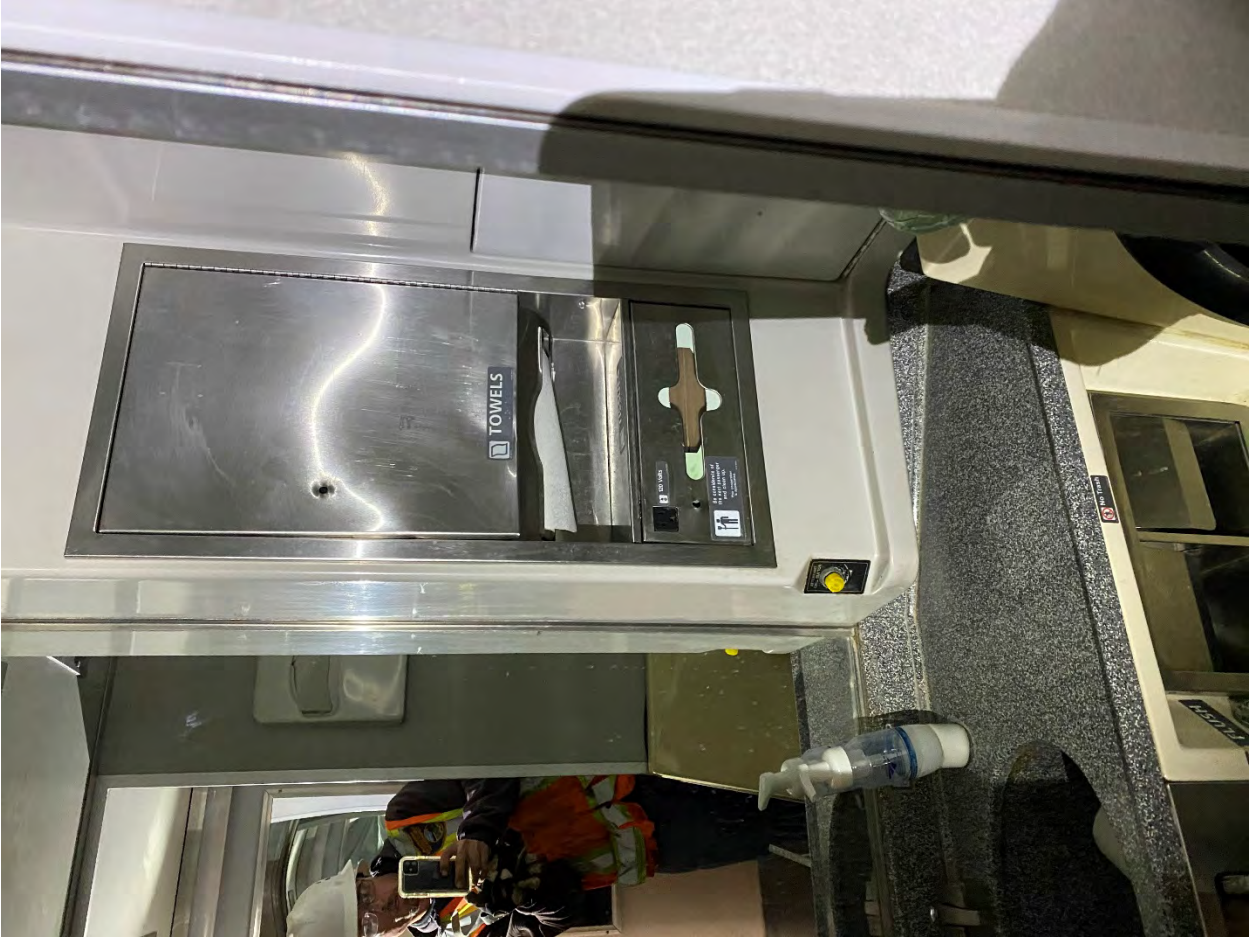




































ATK 33049

The following defects were noted on the lounge/observation car that was positioned as the seventh car behind the two locomotive train consist laying on its side.

The passenger car showed signs of all eight wheels were off the rail. The B end coupler knuckle broken. B end coupler shank twisted.

The following interior inspection defects were noted.

The B end vestibule door diaphragm damaged. The cab windows on upper lower decks on the right side were missing except for one. The fire extinguisher was missing.







































































ATK 34077

The following defects were noted on the coach car that was positioned as the eight car behind the two locomotive train consist laying on its side.

The B end coupler horn broken, but still attached. The AR coupler bumper block missing. The B end coupler bumper blocks missing. The A1 air brake reduction replay missing.

The following interior inspection defects were noted.

The right-side batteries leaking acid. The seat positions 1, 2, 5, and 6 dislodged. Top lever water cooler fell out of the cabinet.





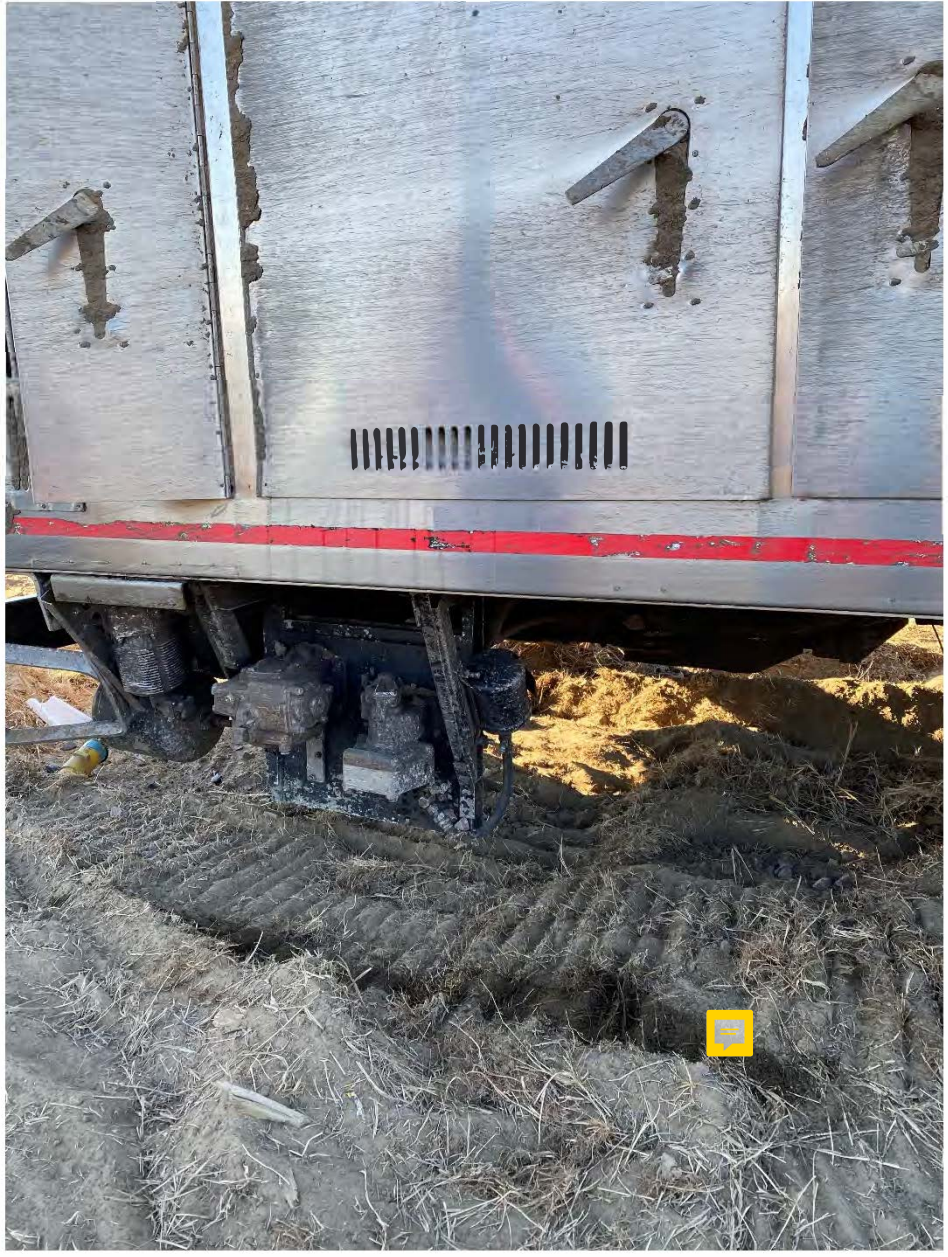
















ATK 31036

The following defects were noted on the coach car that was positioned as the ninth car behind the two locomotive train consist. The car body was on its side.

The A end coupler blocks missing. The B end bumper blocks damaged. The L4 brake rotor bent.

The following interior inspection defects were noted.

The A end vestibule door diaphragm damaged. The bottom floor entry fire extinguisher dislodged from bracket. Between the seats 9, 10, 11, and 12 the cab roof was breached. The windows on seats 67 and 68 were gone. The B end right side batteries dislodged.























ATK 32007

The following defects were noted on the coach car that was positioned as the tenth car behind the two locomotive train consist. The car body was on its side. All eight wheel were on the ground.

The AL coupler bumper stop damaged. The R4 brake rotor damaged.

The following interior inspection defects were noted.

The right-side batteries dislodge. On the AR corner of the car body an equalizer bar breached the car body.

Room 3 wall glass and sliding door glass broken, laying inside and out of room.

Room 7 sliding door glass missing, pushed out.

Room 9 wall glass and sliding door glass removed to the inside.

Room 10 door glass missing, laying inside and outside of room.

Room 13 door glass missing, inside of room.



















