



Fabian Salazar
Air Safety Investigator
Western Pacific Region

Date: June 26, 2024

Subject: Automatic Dependent Surveillance - Broadcast (ADS-B) Data from
Virtower.com

The airport manager for Canyonlands Regional Airport (CNY) Moab, Utah provided the investigation with copies of the data from the airport's ADS-B information provider, Virtower. The copies are figures 1 through 4.

Figure 1 is an image that shows the accident airplane icon on the airport ramp. The altitude, indicated as 43 in the blue and white box, is reported as 4,300 ft mean sea level (msl).

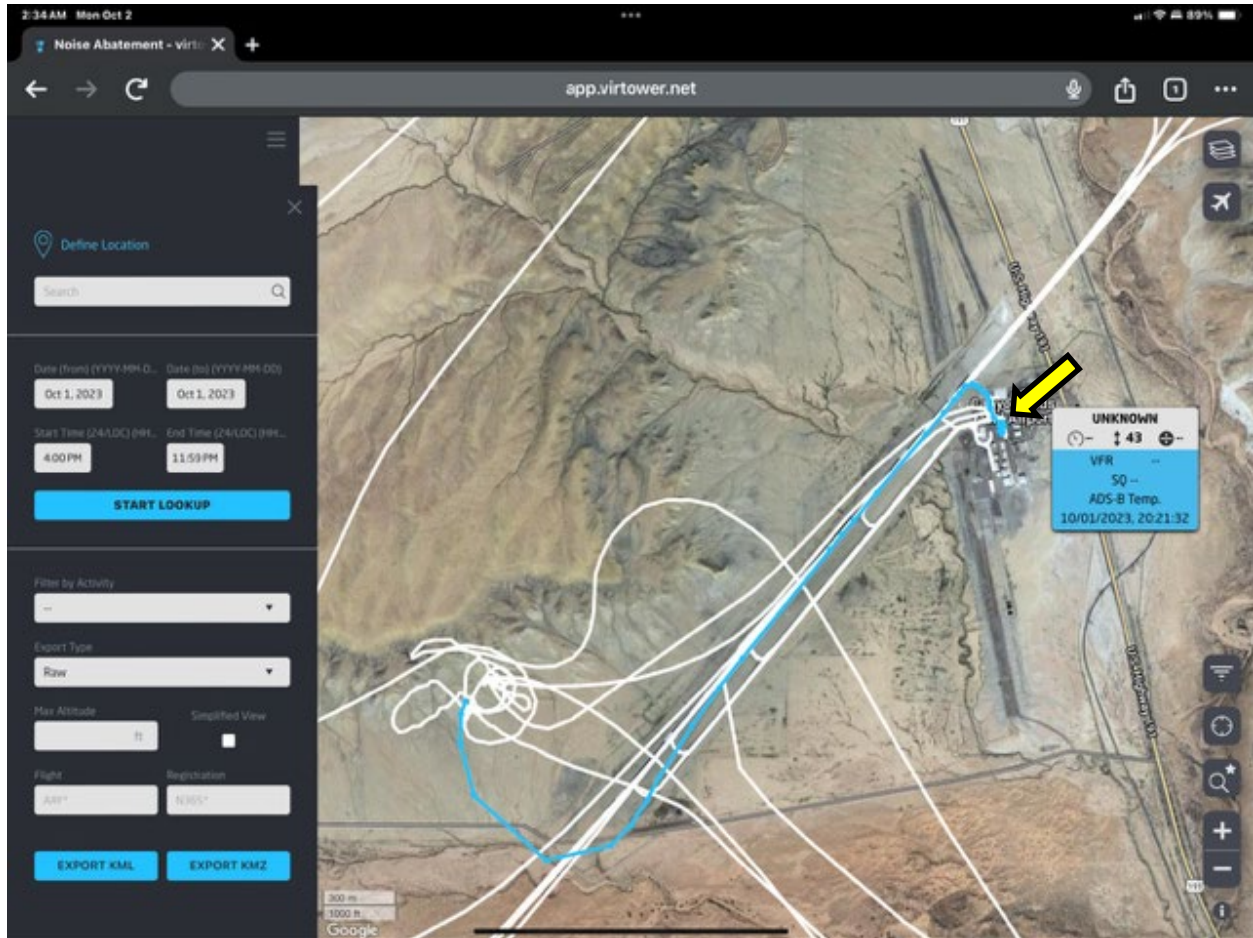


Figure 1. Image showing the icon for the accident airplane on the airport ramp at an altitude of 4,300 ft msl. The yellow arrow points to the icon.

Figure 2 is an image of the airplane icon on the runway, about mid-length at 4,400 ft msl.

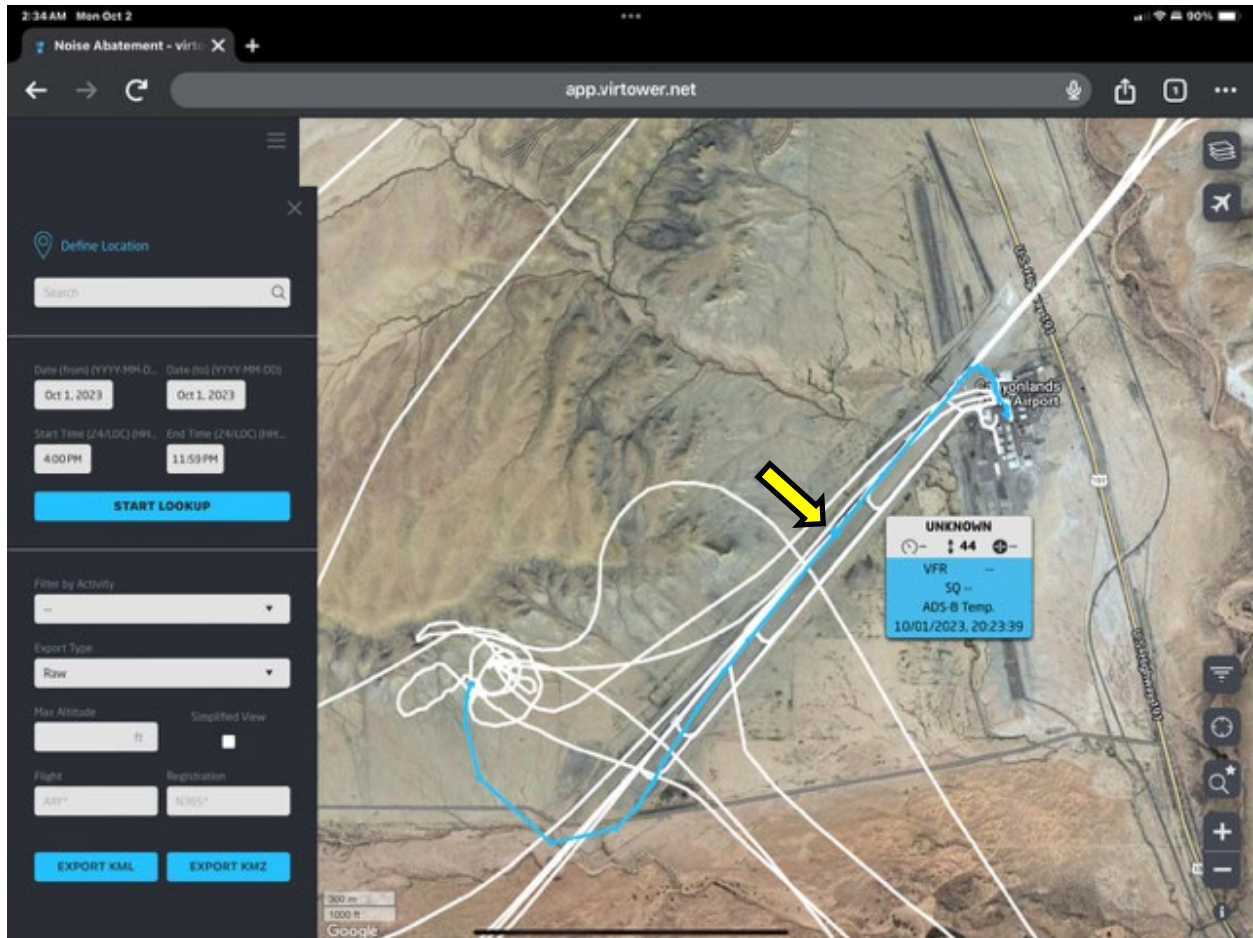


Figure 2. Image of the airplane icon about mid-length of the runway 21 and at 4,400 ft msl.

Figure 3 is an image that shows the airplane icon beyond the departure end of runway 21, left of the centerline, and at 4,500 ft msl.

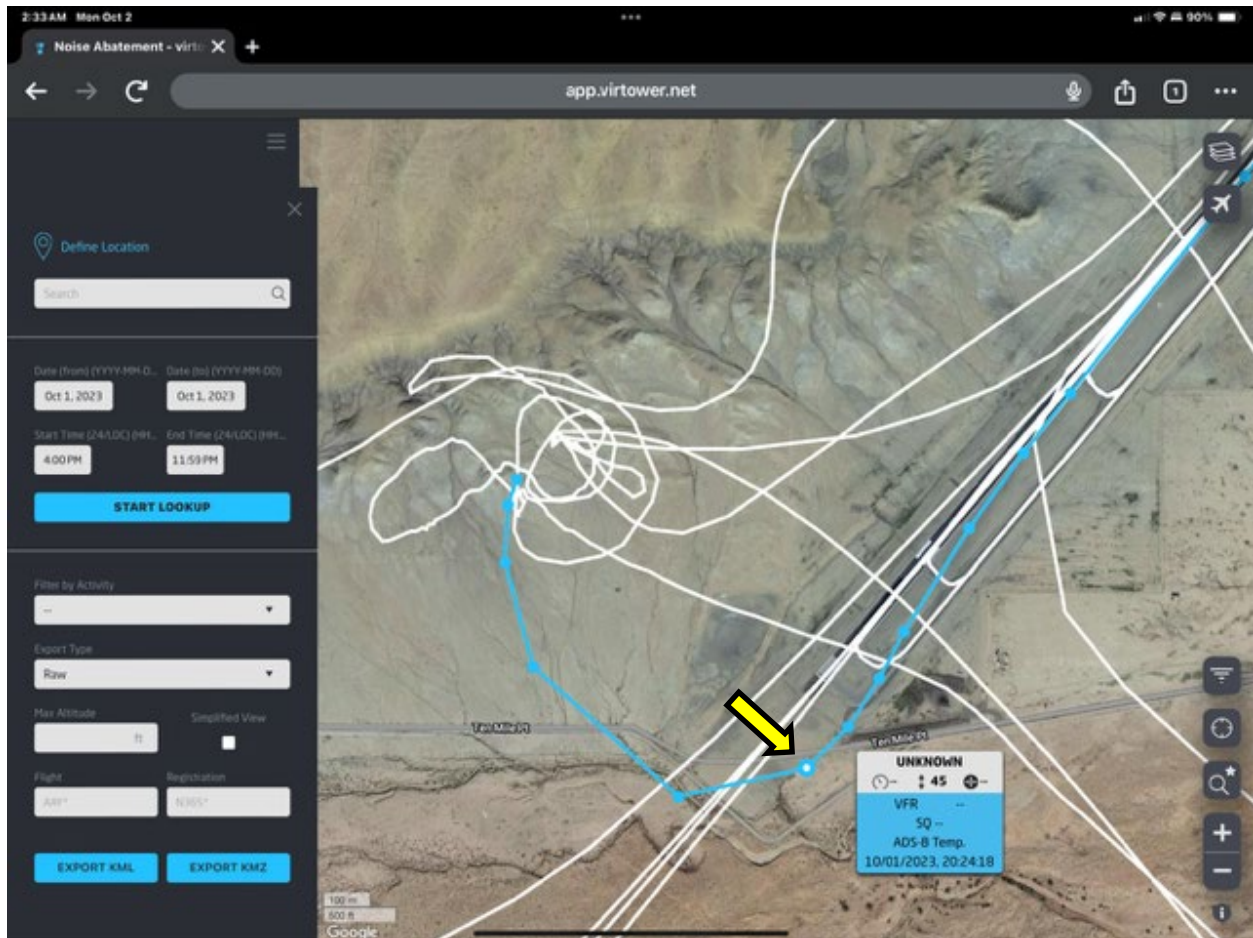


Figure 3. Airplane icon beyond the departure end of the runway, left of centerline and at 4,500 ft msl.

Figure 4 is an image of the airplane icon west of the runway, about 715 ft southwest of the accident site at 4,300 ft msl.

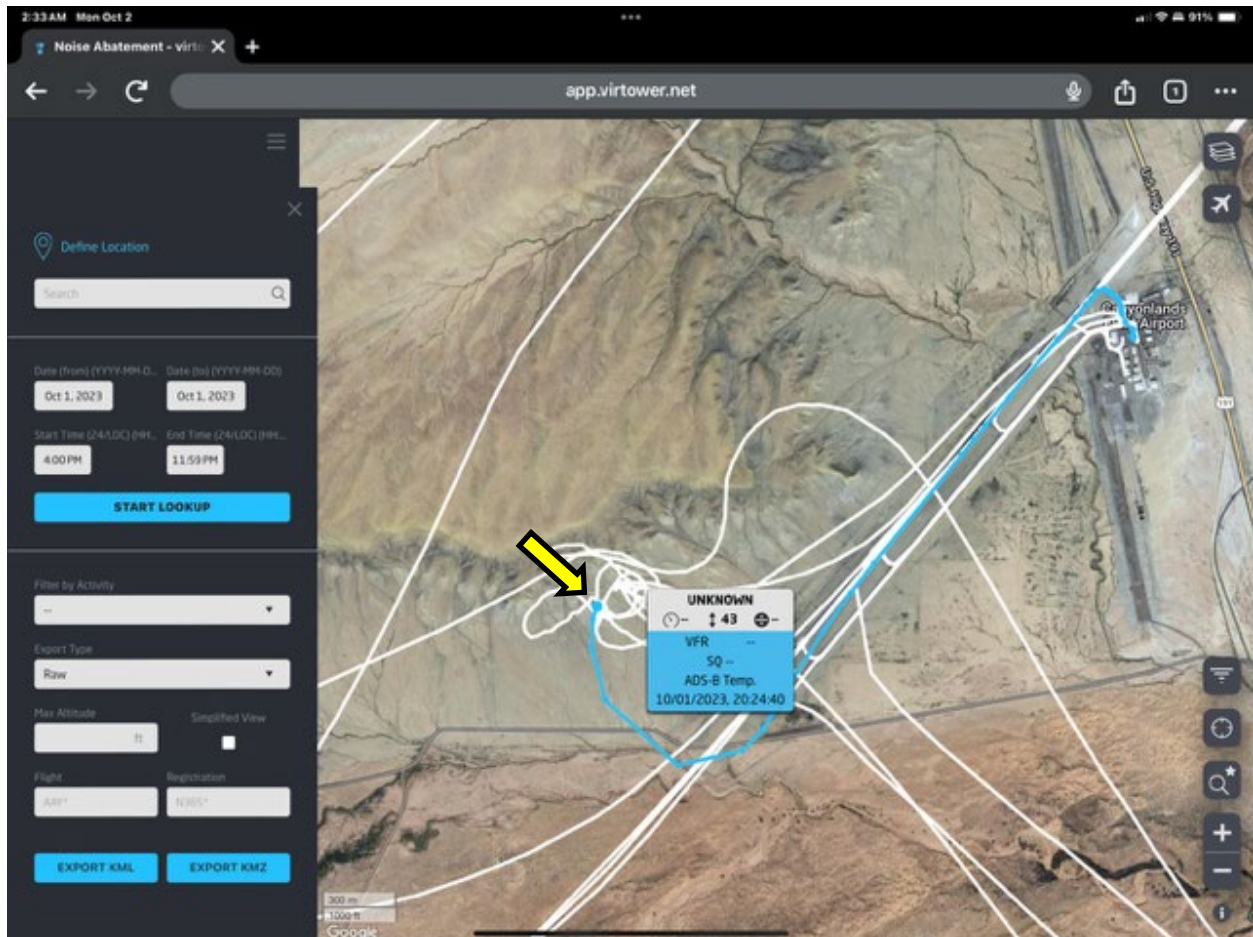


Figure 4. Image of the airplane icon west of the runway, about 715 ft southwest of the accident site, at 4,300 ft msl.

According to the owner of Virtower, the altitude has an error of +/- 200 ft.

