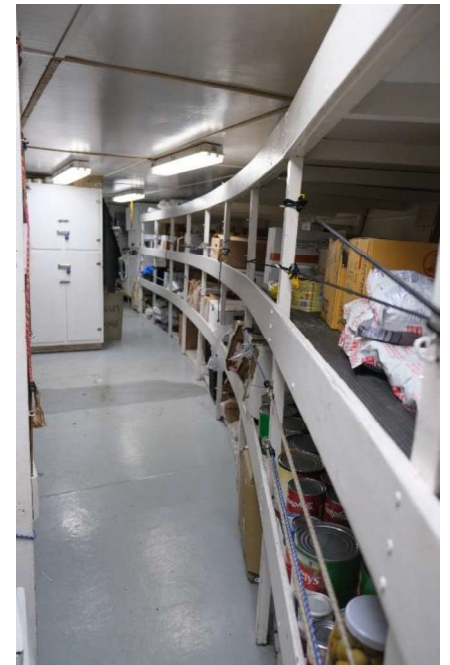


**(02) Net Sounder Platform Deck:** At the port and starboard trawl shelter decks aft, short ladders with handrails and self-closing stainless steel safety gates lead up to the net sounder platform deck. Located aftermost on this deck level, this is a weather deck of approximately 1,100 overall square feet. The deck shelters the (01) trawl deck level aft below and carries the net sounder trawl winches, cod end dumping/handling winches and (2) Freon R-22 refrigerant reclaim cylinders, stored secure within custom fabricated racks. The deck is reinforced underside at the trawl deck stern shelter deckhead with 16" x 3" x 3/8" flange plate main frames and 6" x 4" x 5/16" structural angle irons on 24" centers.



### Layout (01) (Trawl) Deck Level (From Forward)

**01-1 Galley Dry Stores:** Foremost the bow stem, followed immediately aft by a large galley dry storeroom, leading aft on the portside, between frames 2 - 26. This room is very well illuminated and is lined at the overhead and vertical surfaces with white painted plywood panels. The room contains three-tiered wooden storage shelves for galley provisions, cleaning supplies, and the following equipment:



- Uni Mac, model UCN020GNFBU3002 commercial clothes washer
- Uni Mac, model USEMNAGS171TW01 U, clothes dryer **Unit Serial #: 150108298**
- Uni Mac, model USEMNAGS171TW01 L, clothes dryer **Unit Serial #: 150108298**
- **Maintenance Note:** Clothes dryers are stacked over/under and are recently new
- Fantech, automatic dryer booster fan serving the clothes dryer units ducting system
- Stainless steel washbasin with jet spray hose
- Waxie, paper towel dispenser
- Diversey 'Quattro Select' adjustable automatic detergents dispenser

An escape trunk in this room leads up and out to the 02-1 Bo'sun's locker via ladder, through a hinged, 20" diameter, 4-dog quick-acting watertight hatch in good, watertight condition. Aft, a fire rated, sheet metal skinned door with window leads into the galley.

**01-10 Walk in Freezer:** A 2,200 cubic feet capacity walk in domestic freezer is located outboard on the starboard side, between frames 10 – 20. The unit is accessed from the galley dry stores through a Cospolich, stainless steel insulated door with safety escape latch in working order.

## Portside Living Area and Accommodations Arrangement (From Forward)

**01-2 Galley:** The galley is arranged with all stainless steel food preparation countertops around a large, island type cooking center. Storage cabinets and drawers are finished in light grey laminate. The galley and scullery are very well illuminated, using flat panel led lighting. The galley and scullery sole are finished in non-skid layment. The galley contains the following commercial grade appliances:



- Lang model 36-S, stainless steel convection/standard ovens with griddle and four-burner cook tops
- Stainless steel ventilated range hood with fire suppression
- Lang 'Strato Series Selectronic II' model ECOF-S-480VM convection baking oven **Unit Serial #: C0E0314A0109**
- Superior, model R49-S upright refrigerator **Unit Serial #: 13090011**
- Wells, model B-50 double-wide electric grille **Unit Serial #: B501013A0002**
- Duke Manufacturing, stainless steel, 5-tray waterless food warmer
- Hatco 'Glo-Ray' wood warmer
- Groen, model EE 20 pressure cooker **Unit Serial #: 42720-5**
- (2) Lang, model 150 FM marine deep fat fryers
- Amana Commercial, microwave oven
- Hobart 'Legacy' high-capacity mixer
- Robot Coupe, model R2 food processor
- (2) Epcoc, commercial high capacity portable baking tray racks
- Double stainless steel food preparation sinks with jet spray hose
- Single stainless steel handwashing basin
- Kimberley Clark Professional paper towel dispenser
- New Globe, model S13A meat slicer

Sheet metal skinned, fire rated doors inboard and aft in the galley respectively lead out to the starboard accommodations common passageway and to the mess area.

**Maintenance Note:** During this maintenance cycle, ventilated range hood exhaust fan, Lang ovens, coffee machine and beverage machines were professionally serviced.

**Scullery:** Located outboard on the portside within the galley, the scullery is arranged in an L-shape, with stainless steel sidewalls and stainless steel countertops. An opening aft in the scullery facilitates the pass through of soiled dishes, cups, and cutlery from the mess area. The scullery contains the following commercial grade appliances:



- Hobart, model AM15 high-capacity automatic dishwasher **Unit Serial #: 231184150**
- (2) Seko Pro Sink, automatic dish detergent dispensers
- Kimberley Clark Professional, paper towel dispenser
- Single stainless steel wash basin with jet spray hose and In Sink Erator, model Excel-2 macerator **Macerator Serial #: 15031671079**
- Triple-deep stainless steel sink with twin jet spray hoses

**Maintenance Note:** During this maintenance cycle, the Hobart dishwasher and Waxie chemical dispensers were professionally serviced.

**Mess Room:** Located outboard on the portside and next aft the galley. There are (6) laminate finished mess tables with mahogany sea rails. Seating is individual swivel type, with a capacity of (53) adults. The chairs are upholstered in heavy-duty vinyl, in good condition. A crew email messaging center is inboard forward, and an entertainment center is inboard aft. (4) 16" hinged portlights with deadlight covers look outboard. The mess room has two serving lines forward, with the following commercial grade appliances:



(4) 16" hinged portlights with deadlight covers look outboard. The mess room has two serving lines forward, with the following commercial grade appliances:

- Manitowoc, ice making machine/water dispenser
- True, model T-23-HC upright commercial refrigerator **Unit Serial #: 9545339**
- Intertek, model 11067 popcorn machine
- Bunn-O-Matic, model LCA-2 commercial coffee brewer
- Keurig, single cup coffee brewer
- Salad bar with polycarbonate guard
- Four bank juice dispenser/chiller of unknown specification
- Hamilton Beach Commercial, four-slice toaster
- (4) San Jamar, paper cup dispensers

The mess room sole is finished with water resistant non-skid, composition. Aft in the mess room, a sheet metal skinned, fire rated door leads out to the portside fore to aft common passageway, accessing accommodations.

- (1) Alfa Laval, model M10-MFM titanium plate condenser is located in the refrigeration machinery room. **Year of Manufacture: 1995. Unit Serial #: 30102-86742**

**Chillers:** Numerous coiled and gilled fin, evaporator type chilling grid units are at the refrigerated cargo hold overhead.

**Liquid Refrigerant Pumps:** (4) Lederle Hermetic, type CNF 40-160 pumps are located in the freon pump room. A single spare pump of the same specification is readily available adjacent to the pumps, on custom fabricated mount.

**Accumulator Vessel:** A Morfab, all steel pressure vessel is rated at 300 psi maximum allowable working pressure.

**Accumulator Vessel Year of Manufacture: 2012**

**Accumulator Vessel Serial #: 14657**

**Priority Vessel:** A Morfab all steel pressure vessel is rated at 300 psi maximum allowable working pressure.

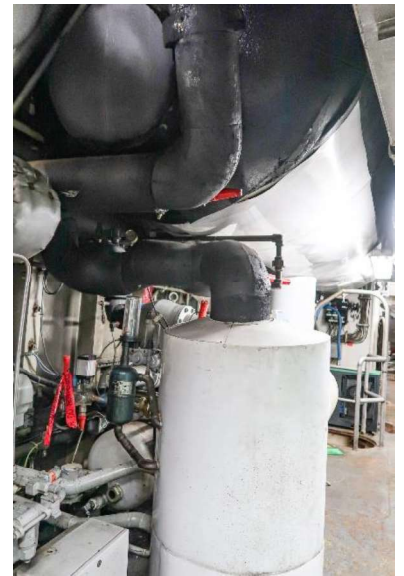
**Priority Vessel Year of Manufacture: 2012**

**Priority Vessel Serial #: 14658**

**Economizer:** Henry, specification unknown.

**Freon Low Pressure Receiver:** A high-capacity steel pressure vessel of unknown specification is located overhead within the refrigeration machinery room.

**Refrigeration System Piping Insulation:** Comprised of a vapor barrier, over-layered with polyurethane closed cell insulation and shielded with a white pvc flexible exterior.



### **Domestic Refrigeration Systems Machinery and Equipment**

**Walk In Freezer Refrigeration Equipment:** The unit is chilled using Trenton cooling fans and Trenton, model TEZA060L8-HT3D-F condensing unit, using 17 pounds of Freon, R404A refrigerant. **Condenser Serial #: 209450747**

**Walk In Chiller Refrigeration Equipment:** The unit is chilled using Trenton cooling fans and Trenton, model TEZA020H8-HS2D-B condensing unit, using 17 pounds of Freon, R404A refrigerant. **Condenser Serial #: 209448252**

**Walk In Freezer/Chiller Condenser Pump:** (1) Baldor Electric, 5 hp, 208/460 volt ac electric motor drives (1) MP Pumps, 2" x 2" port centrifugal pump.