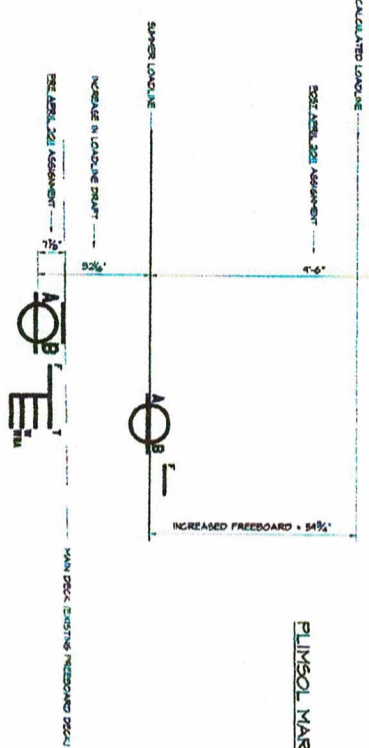


0' TRIMM DUCK HOOP APRIL 2011 (REVISION DUCK)

REV	DATE	DESCRIPTION	BY	CHK
1	01/14/2010	INITIAL SHEET	JM	01/14
2	02/23/10	ADDED TO THE TRAIL 2-4 REVISIONS	JM	02/23
3	02/23/10	ADDED TO THE TRAIL 2-4 REVISIONS	JM	02/23
4	02/23/10	ADDED TO THE TRAIL 2-4 REVISIONS	JM	02/23
5	02/23/10	ADDED TO THE TRAIL 2-4 REVISIONS	JM	02/23
6	02/23/10	ADDED TO THE TRAIL 2-4 REVISIONS	JM	02/23

- Updated 4/1/13
Jobs
- #1 - Fuel tank bulkhead
 - #2 - OS deck insert
 - #3 - Wheelhouse crawl space
 - #4 - Tank vent end replacement
 - #5 - Stack boiler blowdown line

DETAIL 3-C
PLINGSOL MARKS PRE & POST APRIL 2011



GENERAL NOTES

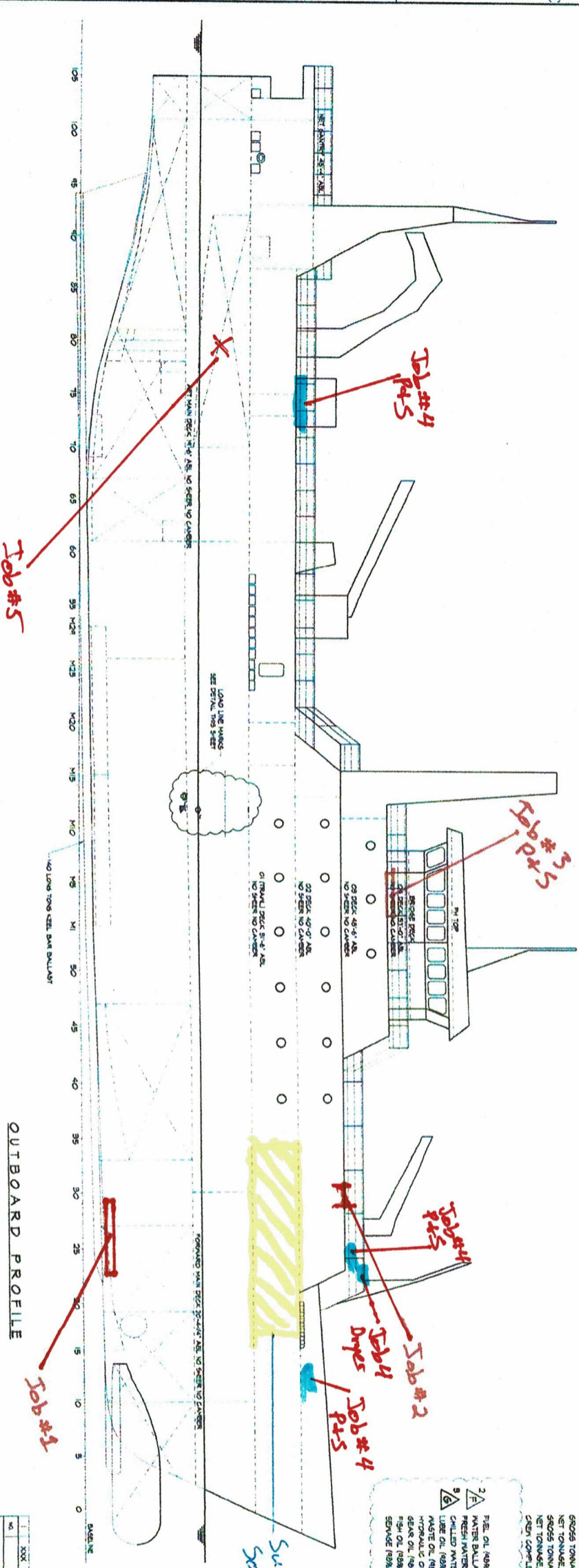
- THIS DRAWING WAS DEVELOPED FROM EXISTING VAILING DRAWING 0104-5A BLOWER SUPERBUILDING DRAWINGS 21871-00-00-01, 02, 03, 04 AND FROM 21871-00-00-02.
- SEE DETAIL 105 WEST FOR THE LOCATION OF THE TRAIL 2-4 REVISIONS.
- VEHICLE IS LOADLINE ONLY. FISH PROCESSING VESSEL, IAS NUMBER T10016A.

PARTICULARS

CAPACITIES (APPROXIMATE)

RES. OIL (98#)	84,425 GAL.
WATER BULKHEAD (100#)	51,021 GAL.
FRESH WATER (100#)	47,051 GAL.
CHILLED WATER (100#)	15,840 GAL.
LUBE OIL (98#)	23,665 GAL.
MAGTE OIL (98#)	12,913 GAL.
HYDRAULIC OIL (RESERVE) (98#)	3,457 GAL.
GEAR OIL (98#)	484 GAL.
FISH OIL (98#)	22,259 GAL.
SEWAGE (98#)	3714 GAL.

Suspected Source Area



OUTBOARD PROFILE

REFERENCES

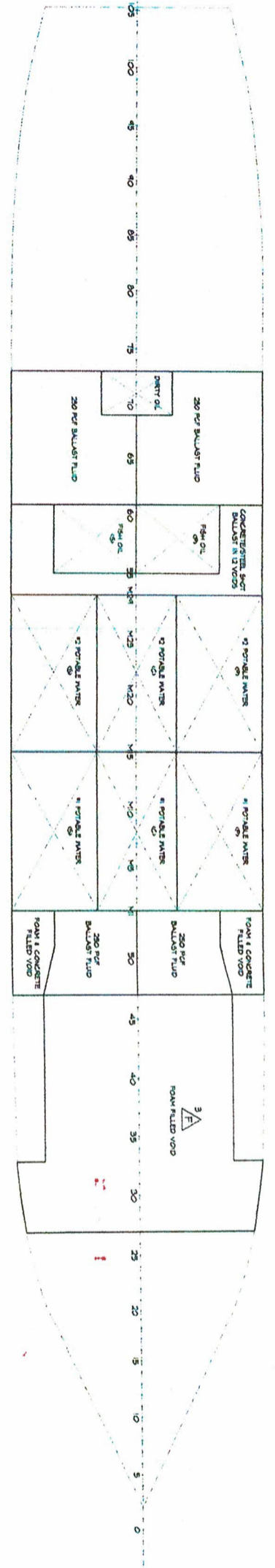
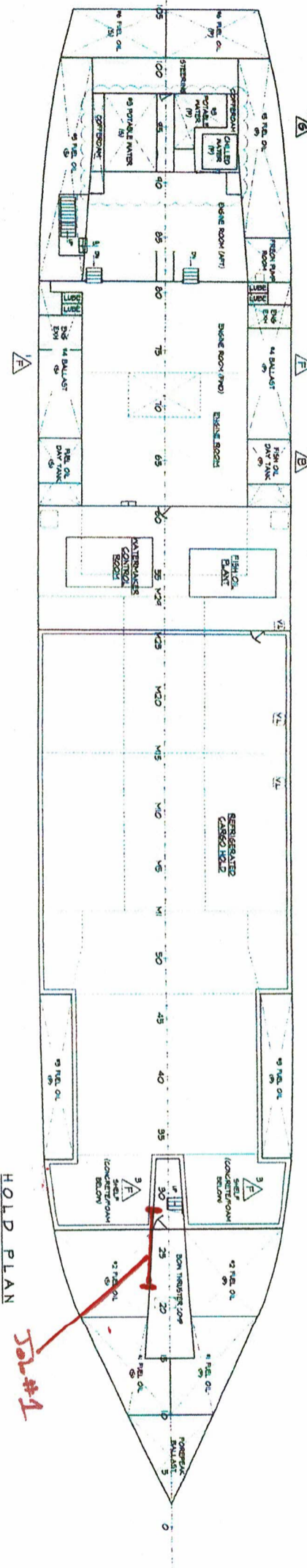
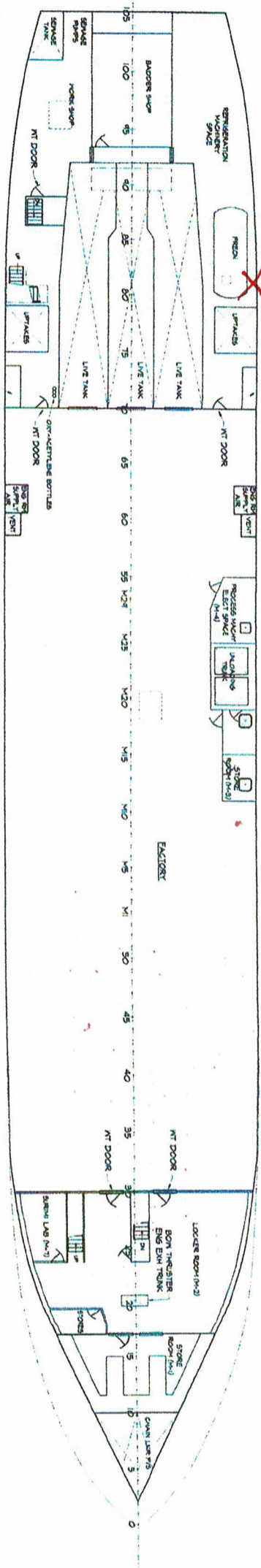
PROJECT	FT KODIAK ENTERPRISE
CLIENT	TRIDENT SEAFOODS SEATTLE WA
GENERAL ARRANGEMENT	OUTBOARD PROFILE

CKEMA & WHALEN ASSOCIATES
NAVAL ARCHITECTS / MARINE ENGINEERS
SEATTLE WA USA



RAVE SPACINGS

TYPE	3/4"	COE	1/8"	SPAC	3/4"	SPAC	3/4"	SPAC	3/4"
NO. OF	1	1	1	1	1	1	1	1	1
SCALE	3/32" = 1'-0"								



SEE SHEET 1 FOR REFERENCES, REVISIONS & GENERAL NOTES

PROJECT: F/T KODIAK ENTERPRISE
 CLIENT: TRIDENT SEAFOODS SEATTLE, WA
 DRAWING TITLE: GENERAL ARRANGEMENT DBL BTM, HOLD, MAIN DECK

HOCKEMA & WHALEN ASSOCIATES
 NAVAL ARCHITECTS / MARINE ENGINEERS

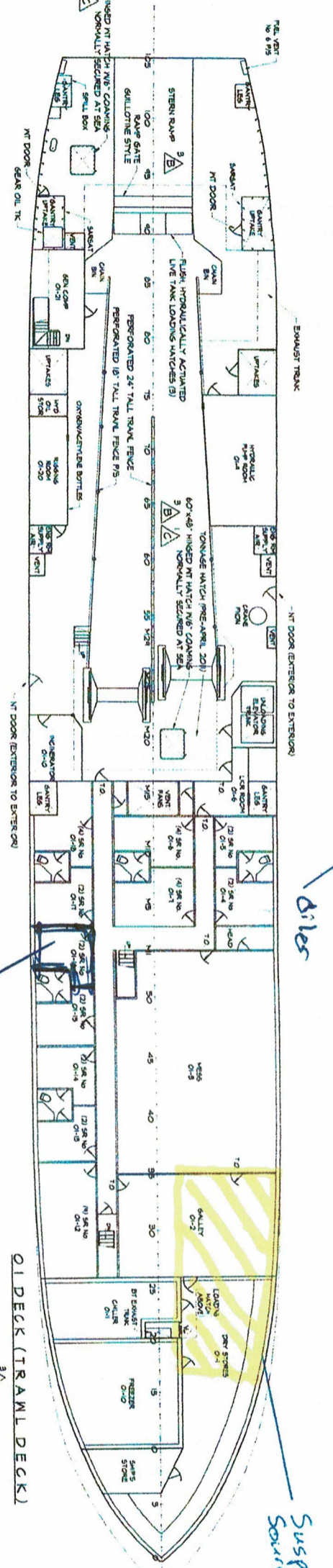
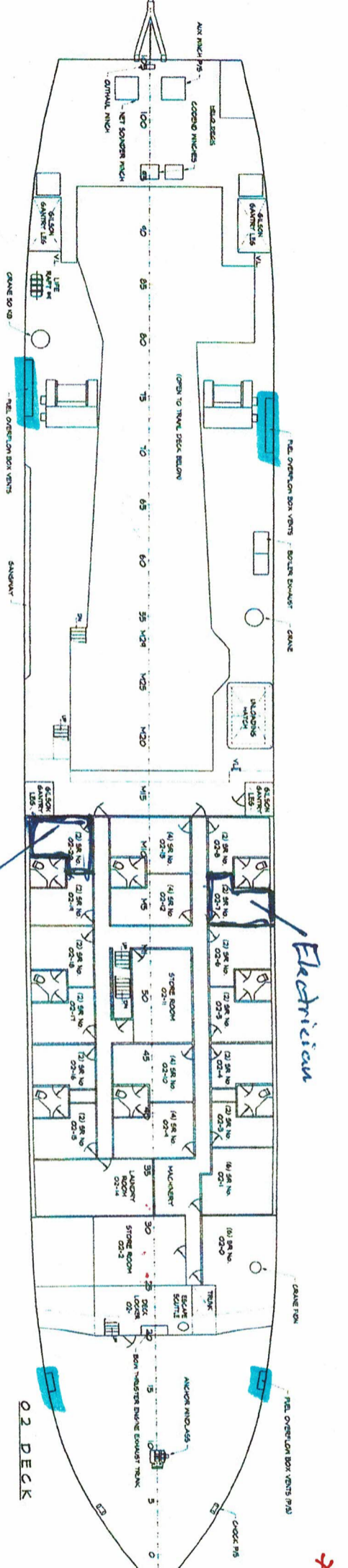
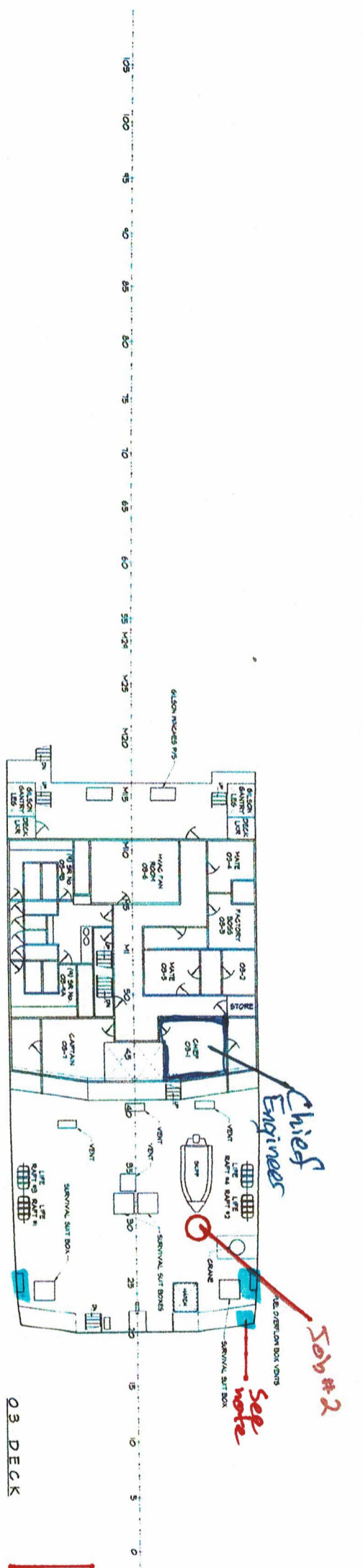
NO.	DATE	BY	CHK'D	REV.
1	07.14.2010	CS	CS	1
2	08.23.2010	CS	CS	2
3	09.01.2010	CS	CS	3
4	09.01.2010	CS	CS	4

SCALE: 3/32" = 1'-0"

DATE: 09-01-2010

SHEET 2 OF 4





Job #4
7 locations

* NOTE
Fire gossamer suspected
to be dry shores drier
vent

Suspected
Source Area

Asst.
Engineers

Chief
Engineers

Sob #2

Sob note

Electrician

Dries

SEE SHEET FOR REFERENCES, REVISIONS & GENERAL NOTES

PROJECT: F/T KODIAK ENTERPRISE
 CLIENT: TRIDENT SEAFOODS SEATTLE WA
 DRAWING TITLE: GENERAL ARRANGEMENT
 01 02 03 DECKS

HOCKEMA & WHALEN ASSOCIATES
 NAVAL ARCHITECTS / MARINE ENGINEERS

NO.	DATE	BY	CHKD.	APP'D.	REV.
1	04/14/2010	1
2	04/14/2010	2
3	04/14/2010	3
4	04/14/2010	4

SCALE: 3/8" = 1'-0" (SEE SHEET 041-CO-10)

16

15

14

13

D

C

B

A

16

15

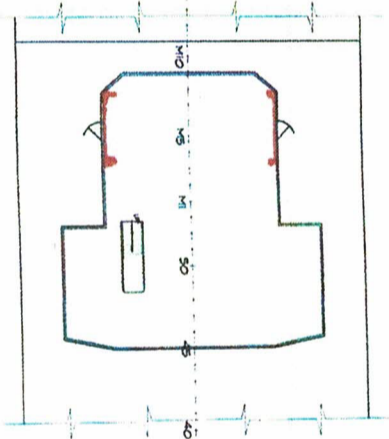
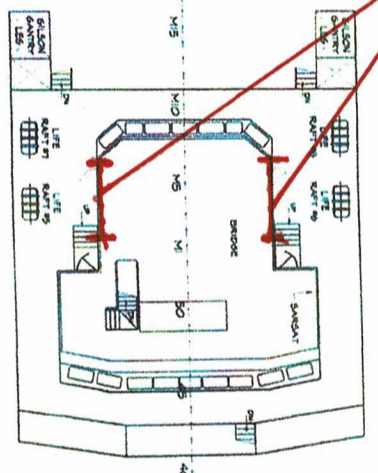
14

D

C

B

A



FRAME SPACING
24" THROUGHOUT

SEE SHEET FOR REVISIONS, REVISONS & GENERAL NOTES.

PROJECT	F/T KODIAK ENTERPRISE
CLIENT	TRIDENT SEAFOODS SEATTLE, WA
DESIGNED BY	HOCKEMA & WHALEN ASSOCIATES
NAVARCH	NAVAL ARCHITECTS / MARINE ENGINEERS

HOCKEMA & WHALEN ASSOCIATES
NAVAL ARCHITECTS / MARINE ENGINEERS

DATE	BY	CHKD	APP'D	SCALE	NO.
08/21/2018	JM	JM	JM	0441-001-10	6
08/21/2018	JM	JM	JM	0441-001-10	5
08/21/2018	JM	JM	JM	0441-001-10	4
08/21/2018	JM	JM	JM	0441-001-10	3
08/21/2018	JM	JM	JM	0441-001-10	2
08/21/2018	JM	JM	JM	0441-001-10	1