

PIPER AIRCRAFT
PA-28-236 DAKOTA
AIRPLANE PARTS CATALOG

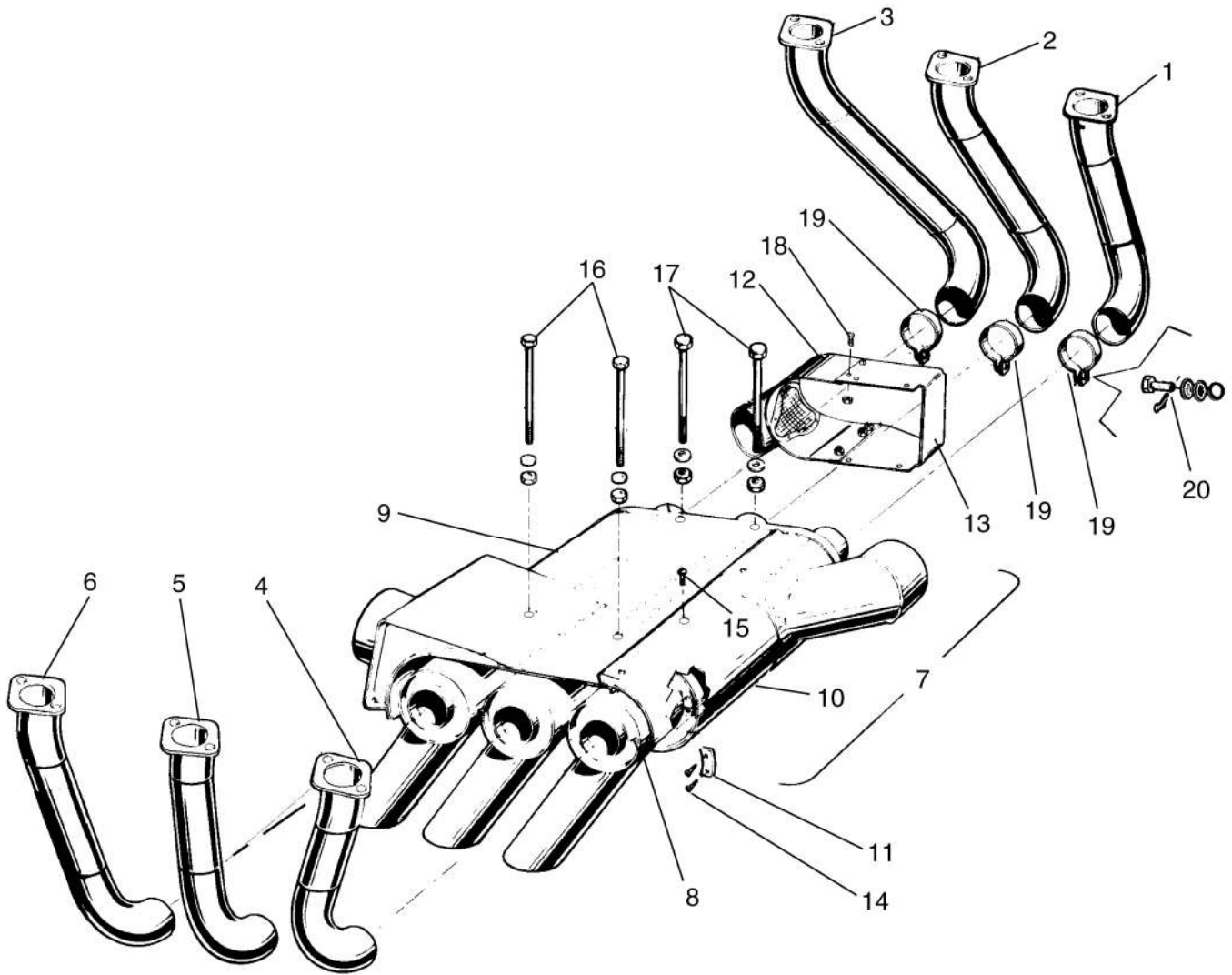


Figure 42. Engine Exhaust System Installation

**PIPER AIRCRAFT
PA-28-236 DAKOTA
AIRPLANE PARTS CATALOG**

CODE EXPLANATIONS FOR FIGURE 42

PIPER AIRCRAFT
PA-28-236 DAKOTA
AIRPLANE PARTS CATALOG

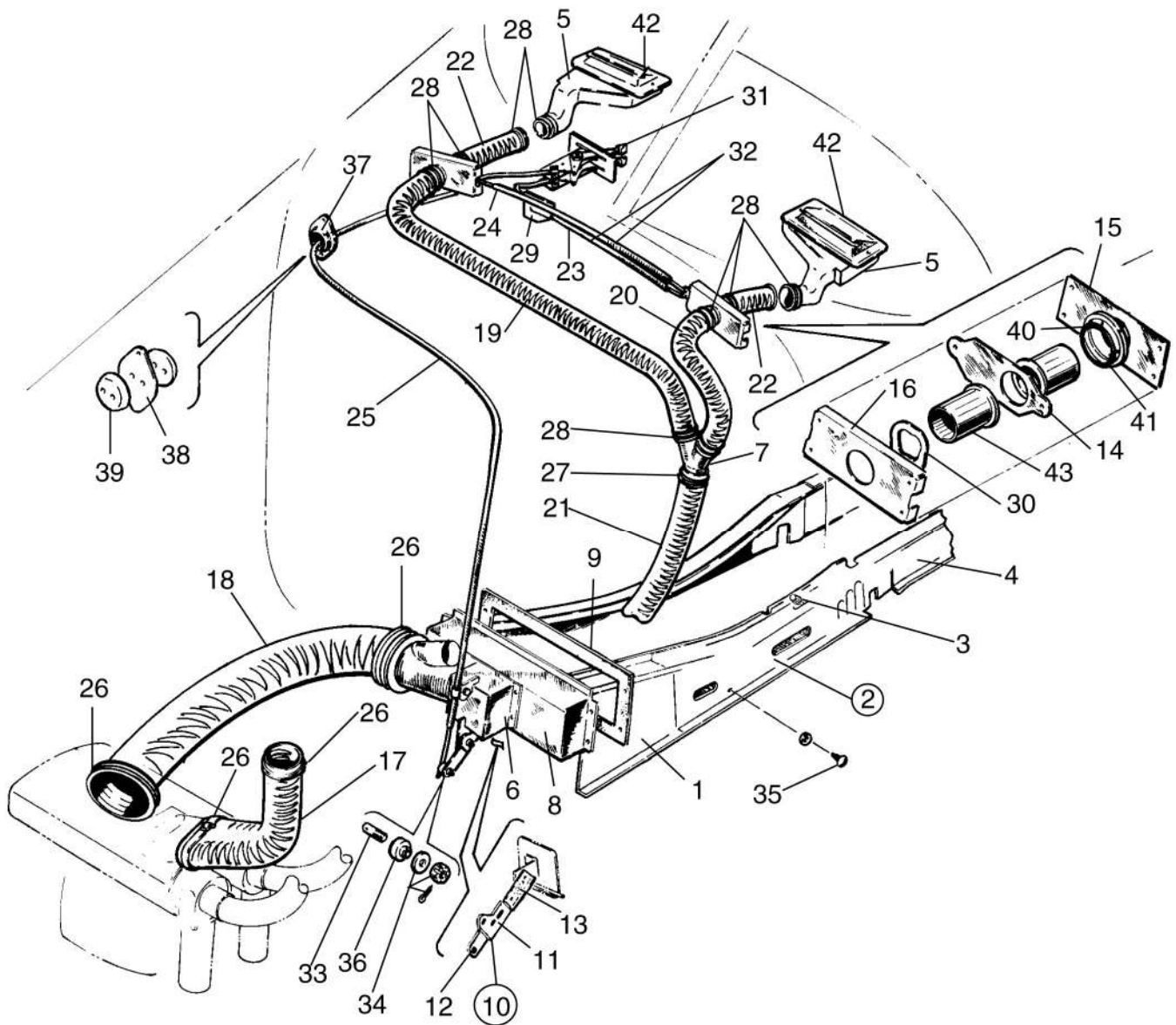


Figure 57. Cabin Heat and Defroster Installation

**PIPER AIRCRAFT
PA-28-236 DAKOTA
AIRPLANE PARTS CATALOG**

CODE EXPLANATIONS FOR FIGURE 57

A - When ordering, specify color "bark II" or black.

**PIPER AIRCRAFT
PA-28-236 DAKOTA
AIRPLANE PARTS CATALOG**

Figure and Index Number	Part Number	Code	Nomenclature	No. Req.	Serial Numbers Affected
57-	99023		DRAWING - Cabin Heat Installation		
	99024		DRAWING - Defroster System Installation		
-1	76219-00		DUCT ASSEMBLY - Cabin heat, front, left	1	
	76219-01		DUCT ASSEMBLY - Cabin heat, front, right	1	
-2	36511-02	A	DUCT ASSEMBLY - Cabin heat, center, left	1	
	36511-03	A	DUCT ASSEMBLY - Cabin heat, center, right	1	
-3	66980-00		* KNOB - Heat duct	1	
-4	76129-02		DUCT - Cabin heat, rear, left	1	
	76129-01		DUCT - Cabin heat, rear, right	1	
-5	79615-02		DUCT ASSEMBLY - Defroster, left	1	
	79615-03		DUCT ASSEMBLY - Defroster, right	1	
-6	65545-00		BOX ASSEMBLY - Cabin heat	1	
-7	69229-00		TAKE-OFF ASSEMBLY - Defroster air	1	
-8	62962-00		BOX ASSEMBLY - Distributor, cabin heat	1	
-9	62969-00		GASKET - Distributor box	1	
-10	36558-07		LINK ASSEMBLY - Cabin heat box	1	28-7911001 thru 28-7911195
-11	36558-02		LINK - Cabin heat box	1	28-7911196 and up
-12	36558-04		LINK - Cabin heat box	1	28-7911196 and up
-13	62178-00		LINK - Cabin heat box	1	
-14	67705-00		GATE - Defroster valve	2	
-15	69274-00		PLATE - Defroster valve	2	
-16	69273-00		HOUSING - Defroster valve	2	
-17	63633-161		HOSE - Air inlet	1	
-18	63633-18		HOSE - Cabin heat	1	
-19	63633-60		HOSE - Defroster	1	
-20	63633-15		HOSE - Defroster	1	
-21	63633-55		HOSE - Defroster	1	
-22	63633-56		HOSE - Defroster	2	
-23	66856-09		CABLE ASSEMBLY - Defroster control (40")	1	
-24	66856-10		CABLE ASSEMBLY - Defroster valve	1	
-25	66856-06		CABLE ASSEMBLY - Cabin heat control, complete	1	
-26	554 772		CLAMP - Hose (SAE TY A-3)	4	
-27	554 896		CLAMP - Hose (PS10017-9-17)	2	
-28	454 985		CLAMP - Hose (SAE TY A-1)	8	
-29	69275-00		CLAMP - Defroster cable	1	
-30	494 123		WASHER - Spring (35)	4	
-31	66980-00		KNOB - Cabin heat and defroster	2	
-32	63882-31		SLEEVE - Defroster cable	2	
-33	70371-03		STUD - Swivel fitting	1	
-34	404 100		NUT - (AN310-3)	1	
	690 612		WASHER - (NAS1149F0363P)	1	
	424 051		COTTERPIN - (MS24665-132)	1	
-35	419 681		SCREW - Heat duct (PS10012-4)	38	
			WASHER - Heat duct (MS27129-1)	38	
-36	70371-02		FITTING - Swivel	1	
-37	66789-00		PLATE - Firewall seal	2	
-38	22105-03		GASKET - Firewall seal	1	
-39	68770-14		GROMMET - Firewall seal	2	
-40	62833-104		WASHER	2	
-41	484 841		O-RING - (NAS1593-213)	2	
-42	65318-00		OUTLET - Defroster air	2	
-43	69279-00		TUBE - Defroster valve	4	
	68278-03		OUTLET ASSEMBLY - Defroster, forward and aft	2	28-7911001 and up

When ordering, always specify Part Number, Description, and Serial Number of Aircraft

Revised March 10, 2008

PIPER AIRCRAFT
PA-28-236
MAINTENANCE MANUAL

CHAPTER 78- EXHAUST

TABLE OF CONTENTS/EFFECTIVITY

CHAPTER SECTION SUBJECT	SUBJECT	GRID NO.	EFFECTIVITY
78-00-00	GENERAL	2K12	
78-01-00	Inspection of Exhaust System	2K12	

PIPER AIRCRAFT
PA-28-236
MAINTENANCE MANUAL

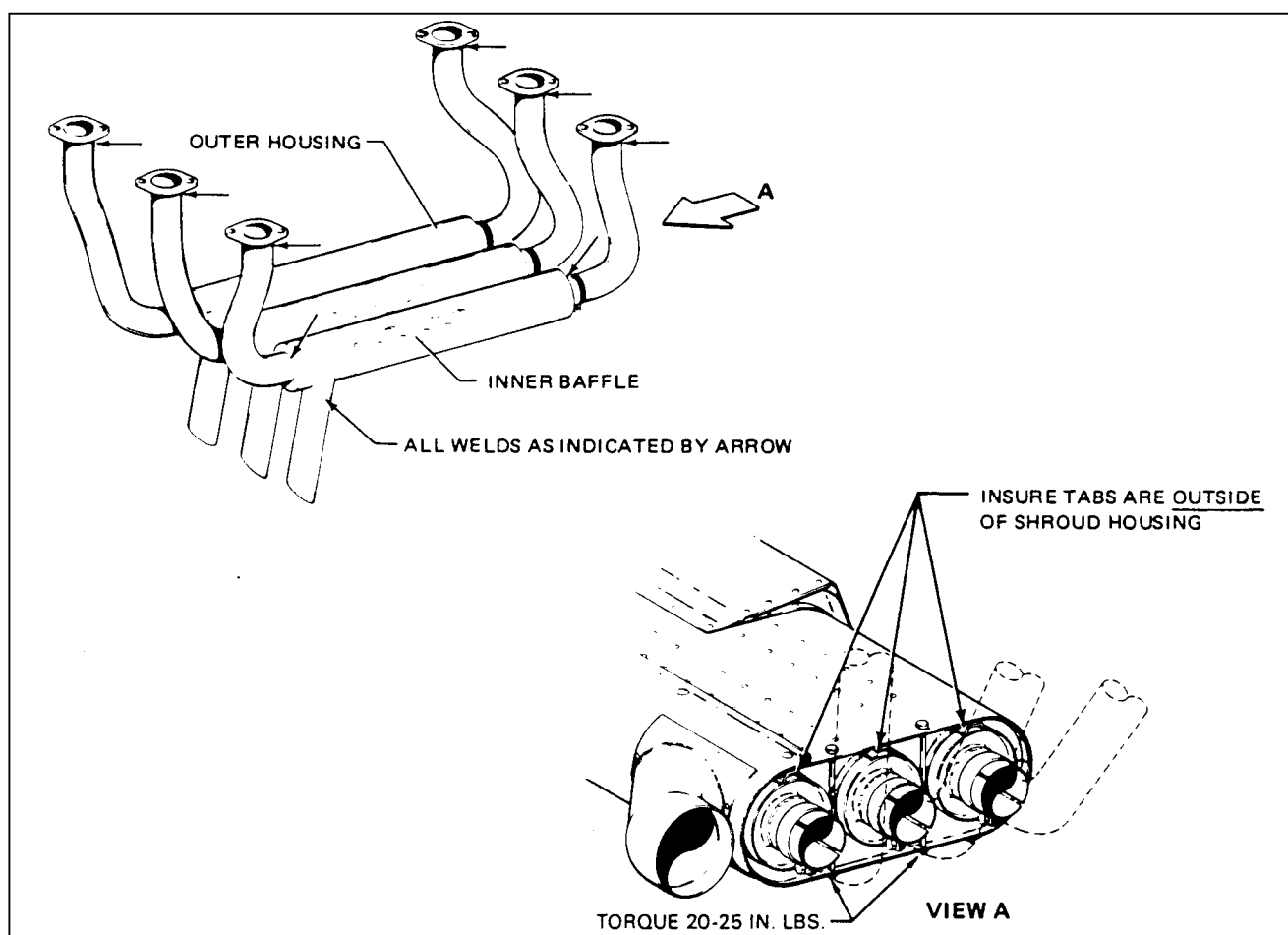


Figure 78-1. Exhaust System Inspection Points

GENERAL

INSPECTION OF EXHAUST SYSTEM (figure 78-1)

—CAUTION—

All airplanes should be fitted with a new muffler at or near 1000 hours of muffler use.

The entire exhaust system, including heat exchange shroud, muffler, muffler baffles, stacks, and all exhaust connections must be rigidly inspected at each annual or 100 hour inspection. The possibility of exhaust system failure increases with use. The system must be checked more carefully as the number of hours increases. The system must also be checked carefully before winter operation when the cabin heat will be in use.

PIPER AIRCRAFT
PA-28-236
MAINTENANCE MANUAL

Removal of tail pipe and stacks is required for inspection of the muffler baffle. Remove or loosen all exhaust shields, carburetor, and cabin heat mufflers, shrouds, heat blankets, etc., as required to permit inspection of the system. Clean and inspect all external surfaces for dents, cracks, and missing parts.

—CAUTION—

Apply Fel-Pro Type C5-A anti-seize lubricant to entire slip joint surface on both sides of muffler to prevent slip joint binding.

Pay particular attention to welds, clamps, supports, and support attachment lugs, slip joints, stack flanges, and gaskets. Inspect internal baffle or diffusers. Any cracks, warpage, or severe oxidation are cause for replacement.

If any component is inaccessible for a visual inspection, conduct one of the following:

1. Conduct a submerged pressure check of muffler and exhaust stack at 2 psi air pressure.
2. Conduct a ground test using a carbon monoxide indicator. Head airplane into the wind. Warm engine on the ground. Advance throttle to full static RPM with cabin heat valves open, and take readings of heated airstream inside cabin at each outlet (including rear seat heat outlet, if installed). Appropriate sampling procedures applicable to the particular indicator must be followed. If carbon monoxide concentration exceeds 0.005 percent or if a dangerous reading is obtained on an indicator not calibrated in percentages, the muffler must be replaced.

—END—

PIPER AIRCRAFT PA-28-236 DAKOTA AIRPLANE PARTS CATALOG

Figure and Index Number	Part Number	Code	Nomenclature	No. Req.	Serial Numbers Affected
42-	35904		DRAWING - Exhaust System Installation		
-1	35904-03		STACK ASSEMBLY - Left front	1	
-2	35904-04		STACK ASSEMBLY - Left center	1	
-3	35904-05		STACK ASSEMBLY - Left rear	1	
-4	35904-06		STACK ASSEMBLY - Right front	1	
-5	35904-07		STACK ASSEMBLY - Right center	1	
-6	35904-08		STACK ASSEMBLY - Right rear	1	
-7	38146-03		MUFFLER ASSEMBLY - Complete	1	
-8	67517-00		* MUFFLER ASSEMBLY	3	
-9	38159-03		* SHROUD ASSEMBLY - Muffler , top	1	
-10	38162-07		* SHROUD ASSEMBLY - Muffler, bottom	1	
-11	67652-00		* TAB - Muffler	4	
-12	35934-02		* SHROUD ASSEMBLY - Heat	1	
-13	35939-02		* BAFFLE ASSEMBLY - Heat shroud	1	
-14	415 517		* SCREW - (MS35206-227)	8	2811001 and up
14a	406 562		* NUT - (NAS696A06)	8	2811001 and up
-15	415 493		* SCREW - (MS35206-228)	7	
-16	400 466		* BOLT - (AN3-43A)	2	
	690 609		* WASHER - (NAS1149F0332P)	4	
	404 156		* NUT - (MS21083N3)	2	
-17	400 468		* BOLT - (AN3-45A)	2	
	690 609		* WASHER - (NAS1149F0332P)	4	
	404 156		* NUT - (MS21083N3)	2	
-18	415 554		* SCREW - (MS35206-244) Baffle	4	
-19	63243-02		CLAMP - Exhaust stack	3	
-20	400 103		BOLT - (AN4-6)	3	
	690 611		WASHER - (NAS1149F0463P)	6	
	404 101		NUT - (AN310-4)	3	
	424 051		COTTERPIN - (MS24665-132)	3	

When ordering, always specify Part Number, Description, and Serial Number of Aircraft