

MODEL 35 PARTS CATALOG

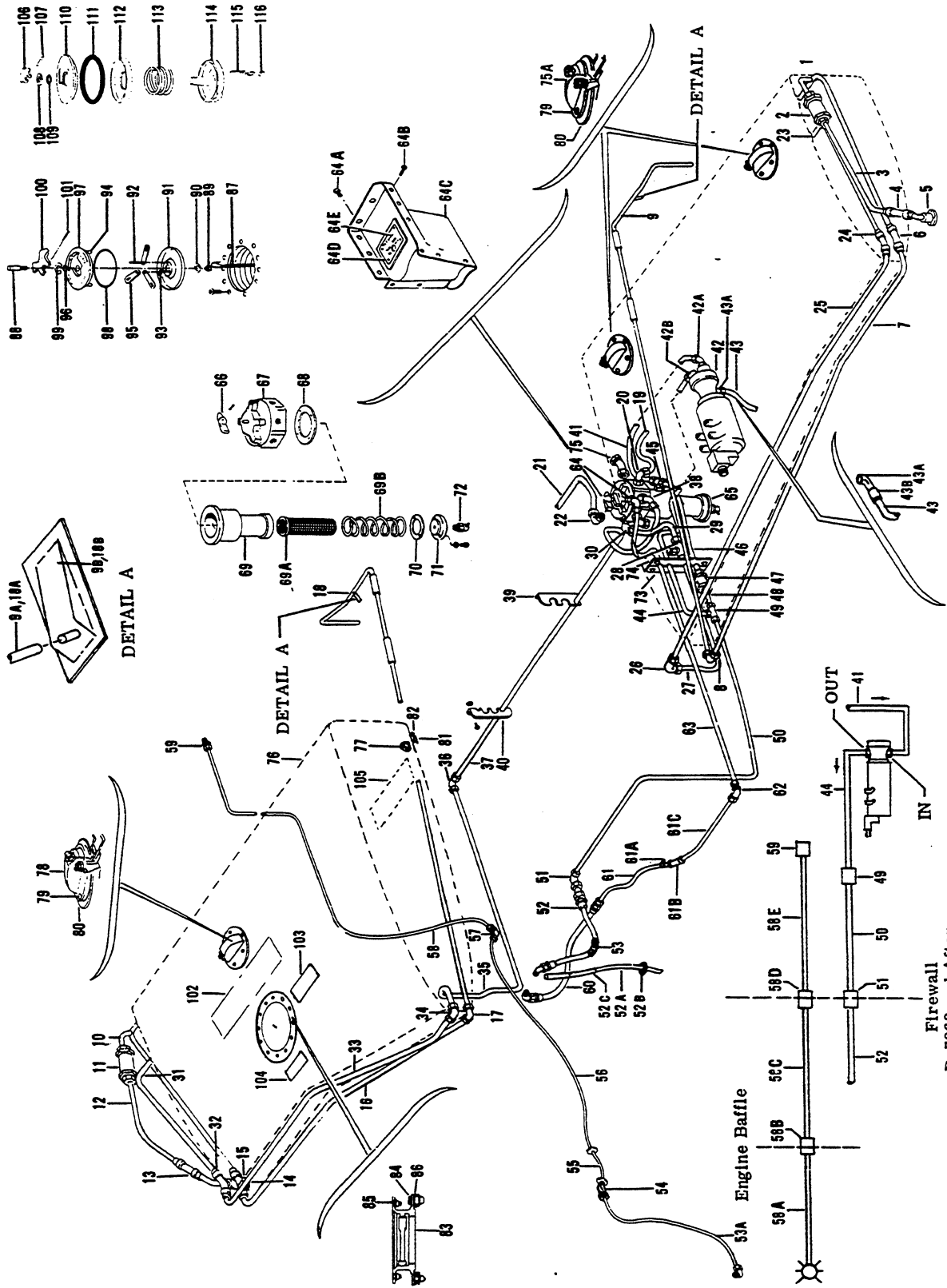


Figure 55. Fuel System (D-5331 and After)

MODEL 35 PARTS CATALOG

FIG. & INDEX NO.	PART NO.	DESCRIPTION							UNITS PER ASSY	USABLE ON CODE
		1	2	3	4	5	6	7		
55 -	35-921154	SYSTEM INSTL,FUEL	NP	1	
	35-921154-87	SYSTEM INSTL,FUEL	NP	2	
	35-921155-45	SYSTEM INSTL,FUEL /50 GAL./	NP	35	
	35-921155	SYSTEM INSTL,FUEL /80 GAL./	NP	35	
	35-921155-117	SYSTEM INSTL,FUEL /50 GAL./	NP	36	
	35-921155-109	SYSTEM INSTL,FUEL /80 GAL./	NP	36	
- 1	35-921153-17	. WELD ASSY,VENT LH	1	1	
	35-921154-97	. WELD ASSY,VENT LH	1	2	
	35-921155-99	. WELD ASSY,VENT LH	1	3	
- 2	□366-00	. VALVE,CHECK /SUPERSEDES 1111-595272/	1	5	
	□MS21919DG17	. CLAMP,CHECK VALVE	1	5	
		/ATTACHING PARTS/								
	AN515-10R12	. SCREW	1		
	□AN960-10	. WASHER	1		
- 3	35-921153-19	. TUBE ASSY,VENT	1	1	
	35-921154-93	. TUBE ASSY,VENT	1	2	
	35-921155-101	. TUBE ASSY,VENT	1	3	
- 4	106200H4-15	. HOSE	1	5	
- 5	□50-920077	. FLANGE ASSY,VENT	1	5	
- 6	106200H4-15	. HOSE	1	5	
- 7	35-921153-23	. TUBE ASSY,VENT LH	1	1	
	35-921154-69	. TUBE ASSY,VENT LH	1	2	
	35-921155-7	. TUBE ASSY,VENT LH	1	17	
	35-921155-9	. TUBE ASSY,VENT LH	1	17	
	106200H4-15	. HOSE,VENT TUBE COUPLING	1	17	
	35-921155-51	. TUBE ASSY,VENT LH	1	18	
		/USE WITH 80 GAL. SYSTEM/								
	35-921154-69	. TUBE ASSY,VENT LH /USE WITH 50 GAL. SYSTEM/	1	3	
- 8	□AN821-40	. ELBOW	1	5	
	□35-921154-53	. TUBE ASSY,VENT LH	1	10	
- 9	□35-921155-127	. TUBE ASSY,VENT LH	1	11	
- 9A	106200H6-27	. HOSE	1	11	
- 9B	□414-920022-5	. SCOOP,LH	1	11	
- 10	35-921153-18	. WELD ASSY,VENT RH	1	1	
	35-921154-98	. WELD ASSY,VENT RH	1	2	
	35-921155-100	. WELD ASSY,VENT RH	1	3	
- 11	□366-00	. VALVE,CHECK /SUPERSEDES 1111-595272/	1	5	
- 12	35-921153-19	. TUBE ASSY,VENT	1	1	
	35-921154-93	. TUBE ASSY,VENT	1	2	
	35-921155-101	. TUBE ASSY,VENT	1	3	
- 13	106200H4-15	. HOSE	1	5	
- 14	□50-920077	. FLANGE ASSY,VENT	1	5	
- 15	106200H4-15	. HOSE	1	5	
- 16	35-921153-25	. TUBE ASSY,VENT RH	1	1	
	35-921154-75	. TUBE ASSY,VENT RH	1	2	
	35-921155-8	. TUBE ASSY,VENT RH	1	17	
	35-921155-13	. TUBE ASSY,VENT RH	1	17	
	106200H4-15	. HOSE,VENT TUBE COUPLING	1	17	
	35-921155-55	. TUBE ASSY,VENT RH /USE WITH 80 GAL. SYSTEM/	1	18	
	35-921154-75	. TUBE ASSY,VENT RH /USE WITH 50 GAL. SYSTEM/	1	3	
- 17	□AN821-40	. ELBOW	1	5	
	□35-921154-54	. TUBE ASSY,VENT RH	1	10	
- 18	□35-921155-128	. TUBE ASSY,VENT RH	1	11	
- 18A	106200H6-27	. HOSE	1	11	
- 18B	□414-920022-3	. SCOOP,RH	1	11	
- 19	□35-921154-31	. TUBE ASSY,FUEL LH	1	6	
	35-921155-19	. TUBE ASSY,FUEL LH	1	15	
	35-921155-73	. TUBE ASSY,FUEL LH	1	14	
	35-921155-105	. TUBE ASSY,FUEL LH	1	34	
- 20	□AN833-6D	. ELBOW	1	6,37	
	□AN837-6D	. ELBOW	1	15	
	□MS29512-6	. GASKET	1	5	
	□AN924-6D	. NUT	1	5	
- 21	35-921154-35	. TUBE ASSY,FUEL RH	1	6	
	35-921155-21	. TUBE ASSY,FUEL RH	1	15	
	35-921155-71	. TUBE ASSY,FUEL RH	1	37	

MODEL 35 PARTS CATALOG

FIG. & INDEX NO.	PART NO.	DESCRIPTION	UNITS PER ASSY	USABLE ON CODE
		1 2 3 4 5 6 7		
55 - 22	□AN833-6D	. ELBOW	1	6
	□AN837-6D	. ELBOW	1	15
	□AN815-6D	. UNION	1	37
	□MS29512-6	. GASKET	1	5
	□AN924-6D	. NUT	1	5
- 23	35-921153-27	. TUBE,RETURN LH.	1	1
	35-921154-95	. TUBE,RETURN LH.	1	4
- 24	106200H4-15	. HOSE	1	5
- 25	35-921153-21	. TUBE ASSY,RETURN LH	1	1
	35-921154-71	. TUBE ASSY,RETURN LH	1	2
	35-921155-5	. TUBE ASSY,RETURN LH	1	17
	35-921155-11	. TUBE ASSY,RETURN LH	1	17
	106200H4-15	. HOSE,RETURN TUBE COUPLING	1	17
	35-921155-49	. TUBE ASSY,RETURN LH /USE WITH 80 GAL. SYSTEM/	1	18
	35-921154-71	. TUBE ASSY,RETURN LH /USE WITH 50 GAL. SYSTEM/	1	3
- 26	□AN821-4D	. ELBOW	1	5
- 27	35-921154-23	. TUBE ASSY,RETURN LH	1	5
- 28	□AN824-4D	. TEE	1	38
	□AN815-4D	. UNION	1	37
	AN820-4D	. CAP	2	38
- 29	35-921154-63	. TUBE ASSY,RETURN LH	1	6
	35-921155-17	. TUBE ASSY,RETURN LH	1	15
	35-921155-75	. TUBE ASSY,RETURN LH	1	37
- 30	□AN833-4D	. ELBOW	2	5
	□MS29512-4	. GASKET	2	5
	□AN924-4D	. NUT	2	5
- 31	35-921153-27	. TUBE,RETURN RH.	1	1
	35-921154-95	. TUBE,RETURN RH.	1	4
- 32	106200H4-15	. HOSE	1	5
- 33	35-921154-39	. TUBE ASSY,RETURN RH	1	1
	35-921154-73	. TUBE ASSY,RETURN RH	1	2
	35-921155-6	. TUBE ASSY,RETURN RH	1	17
	35-921155-15	. TUBE ASSY,RETURN RH	1	17
	106200H4-15	. HOSE,RETURN TUBE COUPLING	1	17
	35-921155-53	. TUBE ASSY,RETURN RH /USE WITH 80 GAL. SYSTEM/	1	18
	35-921154-73	. TUBE ASSY,RETURN RH /USE WITH 50 GAL. SYSTEM/	1	3
- 34	□AN821-4D	. ELBOW	1	5
- 35	35-921154-41	. TUBE ASSY,RETURN RH	1	5
- 36	□AN821-4D	. ELBOW	1	5
- 37	□35-921154-37	. TUBE ASSY,RETURN RH	1	6
	35-921155-23	. TUBE ASSY,RETURN RH	1	15
	35-921155-69	. TUBE ASSY,RETURN RH	1	37
- 38	□AN837-4D	. ELBOW	1	38
	□AN833-4D	. ELBOW	1	37
	□MS29512-4	. GASKET	1	5
	□AN924-4D	. NUT	1	5
- 39	35-921154-11	. BRACKET,TUBE SUPPORT.	1	5
		/ATTACHING PARTS/		
	□AN515-8R10	. SCREW	1	
	□AN960-8	. WASHER	1	
- 40	35-921154-13	. BRACKET,TUBE SUPPORT.	1	5
		/ATTACHING PARTS/		
	AN530-10R7	. SCREW	2	
	NAS395-21-1	. NUT	2	
- 41	35-921154-65	. TUBE ASSY,FUEL	1	8
	□35-921154-107	. TUBE ASSY,FUEL	1	9
	35-921155-29	. TUBE ASSY,FUEL	1	15
	35-921155-65	. TUBE ASSY,FUEL	1	14
	35-921155-91	. TUBE ASSY,FUEL	1	34
- 42	□4032A	. PUMP,FUEL BOOST	1	33
		/SUPERSEDES 4020A1A & 4020A2A/		

NOTE THE FOLLOWING PARTS MUST BE USED WHEN REPLACING 4020A1A OR 4020A2A FUEL BOOST PUMP WITH 4032A BOOST PUMP. AN833-6D ELBOW 1 EA, AN837-6D ELBOW 1 EA,AN924-6D NUT EA, MS29512-6 GASKET 2 EA, 35-921154-107 TUBE ASSY 1 EA.

MODEL 35 PARTS CATALOG

FIG. & INDEX NO.	PART NO.	DESCRIPTION							UNITS PER ASSY	USABLE ON CODE
		1	2	3	4	5	6	7		
55 -	□4140-00-1	.	PUMP,FUEL BOOST	1	39
	□4140-00-39	.	PUMP,FUEL BOOST	1	36
			/ATTACHING PARTS/							
	□AN74A3/M/ □AN4-4A/M/ □AN936B416	.	BOLT.	4
		.	BOLT.	4	34
		.	WASHER.	4	
	□AN837-6D	.	ELBOW	1	33
- 42A	6C5XD	.	ELBOW	1	34
	RA2000C6	.	ELBOW /ALTERNATE FOR 6C5XD/	1	34
- 42B	□AN833-6D	.	ELBOW	1	5
	□MS29512-6	.	GASKET.	2	5
	□AN924-6D	.	NUT	2	5
- 43	35-921154-49	.	TUBE ASSY,BOOST PUMP DRAIN.	1	33
	35-921155-95	.	TUBE ASSY,BOOST PUMP DRAIN.	1	34
	□AN823-4	.	ELBOW	1	33
- 43A	2140-53	.	ELBOW	1	34
- 43B	106200H4-12	.	HOSE.	1	34
- 44	35-921154-19	.	TUBE ASSY,FUEL.	1	33
	35-921155-93	.	TUBE ASSY,FUEL.	1	34
- 45	AN834-6D	.	TEE	1	33
	□MS29512-6	.	GASKET.	1	33
	□AN924-6D	.	NUT	1	33
- 46	35-921154-17	.	TUBE ASSY,FUEL.	1	6
	35-921155-31	.	TUBE ASSY,FUEL.	1	15
	35-921155-67	.	TUBE ASSY,FUEL.	1	14
- 47	□367-00	.	VALVE,CHECK /SUPERSEDES 1111-595273/	1	33
- 48	35-921154-27	.	TUBE ASSY,FUEL.	1	33
- 49	□AN824-6	.	TEE	1	33
	□AN815-6D	.	UNION	1	34
- 50	□35-921154-43	.	TUBE ASSY,FUEL.	1	5
- 51	□AN833-6D	.	ELBOW	1	6
	AN833-6	.	ELBOW	1	3
	□AN960-916	.	WASHER.	1	5
	□AN924-6D	.	NUT	1	6
	□AN924-6	.	NUT	1	3
- 52	□MS28741-6-0140	.	HOSE ASSY,FUEL.	1	29
	MS28741-6-0162	.	HOSE ASSY,FUEL.	1	36
- 52A	35-921154-103	.	TUBE ASSY,FUEL PUMP DRAIN	1	40
	35-921155-119	.	TUBE ASSY,FUEL PUMP DRAIN	1	36
- 52B	□51156	.	BUTTON,PLUG	1	2
	AN931-2-9	.	GROMMET	1	35
	□MS35489-7	.	GROMMET	1	36
- 52C	106200FR4-80	.	HOSE.	1	36
- 53	35-921154-55	.	LAGGING	1	40
	35-921155-115	.	LAGGING	1	36
	NAS397-16	.	CLAMP,LAGGING	2	5
- 53A	□AN6270-2-13 1/2	.	HOSE ASSY,PRESSURE.	1	29
- 54	AN837-2D	.	ELBOW	1	29
	□AN960-516	.	WASHER.	2	29
	AN924-2D	.	NUT	1	29
- 55	106043ZA020	.	TUBE,RUBBER	1	29
	AN931-2-9	.	GROMMET	1	29
- 56	□35-921154-59	.	TUBE ASSY,PRESSURE.	1	29
- 57	□AN833-2D	.	ELBOW	1	29
	□AN960-516	.	WASHER.	2	29
	AN924-2D	.	NUT	1	29
- 58	35-921154-61	.	TUBE ASSY,PRESSURE.	1	19
	35-921154-109	.	TUBE ASSY,PRESSURE.	1	20
	35-921155-83	.	TUBE ASSY,PRESSURE.	1	16
- 58A	MS28741-4-0160	.	HOSE ASSY,FUEL PRESSURE	1	36
- 58B	□AN837-4D	.	ELBOW,BAFFLE.	1	36
	□AN960-716	.	WASHER.	1	36
	□AN924-4	.	NUT	1	36
- 58C	□MS28741-4-0126	.	HOSE ASSY,FUEL PRESSURE	1	36
- 58D	□AN832-4	.	ELBOW,FIREWALL.	1	36
	□AN960-716	.	WASHER.	1	36
	□AN924-4	.	NUT	1	36
- 58E	35-921155-111	.	TUBE ASSY,FUEL PRESSURE	1	36

MODEL 35 PARTS CATALOG

FIG. & INDEX NO.	PART NO.	DESCRIPTION	UNITS PER ASSY	USABLE ON CODE
		1 2 3 4 5 6 7		
55 - 59	□AN4022-1	. JET,FUEL PRESSURE	1	19
	22-627	. RESTRICTOR,FUEL PRESSURE.	1	25
- 60	□MS28741-4-0102	. HOSE ASSY,RETURN.	1	29
	MS28741-4-0166	. HOSE ASSY,RETURN.	1	36
- 61	□33-920000-11	. TUBE ASSY,RETURN.	1	5
- 61A	□100696D-ZF020	. SPACER,RETURN TUBE.	1	5
- 61B	□366-00	. VALVE,CHECK /SUPERSEDES 1111-595272/.	1	5
- 61C	33-920000-13	. TUBE ASSY,RETURN.	1	5
- 62	□AN833-4D	. ELBOW	1	6
	□AN833-4	. ELBOW	1	3
	□AN960-716	. WASHER.	1	5
	□AN924-4D	. NUT	1	5
- 63	35-921154-21	. TUBE ASSY,RETURN.	1	6
	35-921155-25	. TUBE ASSY,RETURN.	1	15
	35-921155-63	. TUBE ASSY,RETURN.	1	37
- 64	□AN833-4D	. ELBOW	1	5
	□MS29512-4	. GASKET.	1	5
	□AN924-4D	. NUT	1	5
	□35-924256-1	. COVER ASSY,FUEL SELECTOR VALVE.	1	1
	35-924256-23	. COVER ASSY,FUEL SELECTOR VALVE.	1	2
	35-924256-25	. COVER ASSY,FUEL SELECTOR VALVE.	1	2
	35-924256-33	. COVER ASSY,FUEL SELECTOR VALVE.	1	35
	35-924256-29	. COVER ASSY,FUEL SELECTOR VALVE.	1	35
	35-534421-3	. PARTITION ASSY /USE WITH 40 GAL. TANKS/	1	36
	35-534421-1	. PARTITION ASSY /USE WITH 25 GAL. TANKS/	1	36
		/ATTACHING PARTS/		
- 64A	□NAS384-6-12P	. SCREW	2	
- 64B	□NAS384-6-8P	. SCREW	8	
	□NAS391-6	. WASHER.	10	
- 64C	35-924256-3	. . COVER,FUEL SELECTOR VALVE	1	29
	35-534421-7	. . COVER,FUEL SELECTOR VALVE	1	36
	35-924256-7	. . PLACARD ASSY,FUEL SELECTOR VALVE COVER.	1	1
	35-924256-9	. . PLACARD ASSY,FUEL SELECTOR VALVE COVER.	1	1
	35-924256-19	. . PLACARD ASSY,FUEL SELECTOR VALVE COVER.	1	2
	□35-924256-21	. . PLACARD ASSY,FUEL SELECTOR VALVE COVER.	1	2
	35-924256-27	. . PLACARD ASSY /USE WITH 39 GAL. TANKS/	1	35
	35-924256-31	. . PLACARD ASSY /USE WITH 25 GAL. TANKS/	1	35
	□35-534421-11	. . PLACARD ASSY,FUEL SELECTOR VALVE COVER.	1	36
	35-534421-9	. . PLACARD ASSY,FUEL SELECTOR VALVE COVER.	1	36
		/USE WITH 25 GAL. TANKS/		
- 64D	35-924256-5	. . . PLATE,FUEL SELECTOR VALVE COVER	1	5
- 64E	□35-924262	. . . PLACARD,FUEL SELECTOR VALVE INSTRUCTIONS.	1	7
	□35-924262-1	. . . PLACARD,FUEL SELECTOR VALVE INSTRUCTIONS.	1	21
	35-924258	. . . PLACARD,FUEL SELECTOR VALVE INSTRUCTIONS.	1	1
	□35-924257	. . . PLACARD,FUEL SELECTOR VALVE INSTRUCTIONS.	1	1
	35-924263	. . . PLACARD,FUEL SELECTOR VALVE INSTRUCTIONS.	1	7
	□35-924263-1	. . . PLACARD,FUEL SELECTOR VALVE INSTRUCTIONS.	1	21
	□35-924267	. . . PLACARD,FUEL SELECTOR VALVE INSTRUCTIONS.	1	35
	33-924001	. . . PLACARD,FUEL SELECTOR	1	36
	35-924276	. . . PLACARD,FUEL SELECTOR	1	3

MODEL 35 PARTS CATALOG

FIG. & INDEX NO.	PART NO.	DESCRIPTION	UNITS PER ASSY	USABLE ON CODE
55 - 65	□35-921154-602	. VALVE ASSY,FUEL SELECTOR.	1	6
	35-921155-601	. VALVE ASSY,FUEL SELECTOR.	1	15
	35-921155-603	. VALVE ASSY,FUEL SELECTOR.	1	37
		/ATTACHING PARTS/		
	□AN74-3/M/ □AN9368416	. BOLT. WASHER.	3 3	
- 66	□35-924255-1	. . HANDLE ASSY	1	5
		/ATTACHING PARTS/		
	□A905 □AN380-1-1	. . PIN,CLEVIS. PIN,COTTER.	1 1	
- 67	□HE825-1	. . VALVE,FUEL SELECTOR /SUPERSEDES HE825/.	1	6
	HE733	. . VALVE,FUEL SELECTOR	1	15
	HE833	. . VALVE,FUEL SELECTOR	1	37
- 68	□50-920030-4	. . GASKET,FUEL STRAINER.	1	5
- 69	□45-920036-1	. . HOUSING,FUEL STRAINER	1	5
		/ATTACHING PARTS/		
	□AN500A10-8 AN935B10	. . SCREW WASHER.	4 4	
- 69A	□50-92C040-10	. . STRAINER ASSY	1	5
- 69B	□111504ZT0324-3	. . SPRING.	1	5
- 70	□35-921181	. . GASKET,FUEL STRAINER.	1	5
- 71	□50-920057	. . PLATE,FUEL STRAINER	1	5
		/ATTACHING PARTS/		
	□AN500A10-12 □AN960-10L	. . SCREW WASHER.	2 2	
- 72	□CCA4850	. . VALVE,DRAIN	1	5
- 73	35-921154-45	. BLOCK,TUBE SUPPORT.	1	5
- 74	35-921154-47	. BLOCK,TUBE SUPPORT.	1	5
		/ATTACHING PARTS/		
	□AN515-8R8 □AN960-8 AN364-832	. SCREW WASHER. NUT	4 12 4	
- 75	□AN837-6D AN820-6D	. ELBOW CAP	1 1	6 6
	□MS29512-6	. GASKET.	1	6
	□AN924-6D	. NUT	1	6
	□35-921242-5	. CELL,FUEL LH /39 OR 40 GAL. CAPACITY/	1	3
	□35-921242-6	. CELL,FUEL RH /39 OR 40 GAL. CAPACITY/	1	3
- 75A	□35-380023	. TRANSMITTER,FUEL QUANTITY INBD LH & RH.	2	32
		/39 GAL. TANKS/		
	□95-380012-5	. TRANSMITTER,FUEL QUANTITY INBD LH & RH.	2	31
		/SUPERSEDES 95-380012-1/ /39 OR 40 GAL. TANKS/		
	□95-369010-3	. TRANSMITTER,FUEL QUANTITY OUTBD LH.	1	32
		/39 GAL. TANKS/ /SUPERSEDES 5640276/		
	□95-369010-4	. TRANSMITTER,FUEL QUANTITY OUTBD RH.	1	32
		/39 GAL. TANKS/ /SUPERSEDES 5640275/		
	□95-380012-7	. TRANSMITTER,FUEL QUANTITY OUTBD LH & RH	2	31
		/SUPERSEDES 95-380012-3/ /39 OR 40 GAL. TANKS/		
	35-921220	CELL INSTL,WING FUEL LH /40 GAL. SYSTEM/.	NP	1
	35-921500-1	CELL INSTL,WING FUEL LH /50 GAL. SYSTEM/.	NP	4
	35-921220-1	CELL INSTL,WING FUEL RH /40 GAL. SYSTEM/.	NP	1
	35-921500-2	CELL INSTL,WING FUEL RH /50 GAL. SYSTEM/.	NP	4
	□35-921218-5	. CELL,WING FUEL LH /20 GAL./	1	1
- 76	□95-380027-1	. CELL,WING FUEL LH /25 GAL./	1	4

MODEL 35 PARTS CATALOG

FIG. & INDEX NO.	PART NO.	DESCRIPTION	UNITS PER ASSY	USABLE ON CODE
55 -	□35-921218-6	. CELL,WING FUEL RH /20 GAL./	1	1
	□95-380027-2	. CELL,WING FUEL RH /25 GAL./	1	4
<p>NOTE WHEN THE 95-380027-1 LH OR 95-380027-2 RH CELLS ARE USED TO REPLACE ORIGINAL EQUIPMENT ON D-5752,D-5757 THRU D-5795,D-5797 THRU D-5820,D-5822 THRU D-5984 AND D-5903 THRU D-5906,THE FOLLOWING PARTS ARE REQUIRED. 50-110010-106 COVER 2 EA,50-110010-108 LH DOOR 1 EA,50-110010-109 RH DOOR 1 EA,50-110010-110 LH LINER 1 EA,50-110010-111 RH LINER 1 EA.</p>				
- 77	□45-921541	. STRAINER ASSY,WING FUEL	2	5
- 78	□1517127	. TRANSMITTER	2	1
	□50-920071	. TRANSMITTER	2	30
	□5640556	. TRANSMITTER,LH.	1	31
	□5641801	. TRANSMITTER,RH.	1	31
		/ATTACHING PARTS/		
	□AN502-10-6	. SCREW	4	
- 79	□AN502-10-8	. SCREW	1	
- 80	□35-921503	. GASKET,TRANSMITTER.	1	5
- 81	□CCA3400	. VALVE,DRAIN	1	5
		/ATTACHING PARTS/		
	□35-921532	. WASHER,FUEL CELL DRAIN.	1	
- 82	□35-921533	. CLAMP,FUEL CELL DRAIN	1	
- 83	□45-921544	. ADAPTER ASSY,FUEL FILLER CAP.	1	28
		/USED WITH 20,25 OR 39 GAL. TANKS/		
	□37826	. ADAPTER ASSY,FUEL FILLER CAP.	1	22
		/USED WITH 25 OR 39 GAL. TANKS/		
	35-921249	. ADAPTER ASSY,FUEL FILLER CAP.	1	24
		/USED WITH 25,39 OR 40 GAL. TANKS/		
	35-921249-3	. ADAPTER ASSY,FUEL FILLER CAP.	1	26
		/USED WITH 25 OR 40 GAL. TANKS/		
		/ATTACHING PARTS/		
	□AN960-416L	. WASHER.	12	
- 84	□AN74-3/M/	. BOLT.	12	
- 85	□AN509-10R9	. SCREW	12	
- 86	□35-921502	. GASKET.	1	5
	□416-85	. CAP ASSY,FUEL FILLER /REPLACES.	1	1
		416-25-20 & 416-85-20/		
	□416-85-25	. CAP ASSY,FUEL FILLER.	1	27
	FC153-100	. CAP ASSY,FUEL FILLER.	1	26
- 87	□416-61-6	. CHAIN ASSY,FUEL TANK 6-INCH	1	28
	□416-50	. CAP ASSY,FUEL 3-INCH FILLER	1	28
- 88	□416-54	. AXLE,FUEL TANK CAP.	1	28
- 89	□AN310-4	. NUT	1	28
- 90	□AN940-416	. WASHER.	1	28
	AN380-2-2	. PIN,COTTER.	1	28
- 91	□416-56	. DISC,FUEL TANK CAP ANCHOR	1	28
		/ATTACHING PARTS/		
- 92	□416-60	. PIN	3	
- 93	□A1059-014-3	. WASHER,SPRING	6	28
- 94	□416-59	. PIN,FUEL TANK CAP DRIVE	3	28
- 95	□416-55	. PAWL,FUEL TANK CAP.	3	28
- 96	□MS29513-10	. RING,FUEL TANK CAP O.	1	28
- 97	416-52	. BASE,FUEL TANK CAP.	1	28
- 98	□MS29513-232	. RING,FUEL TANK CAP O.	1	28
- 99	□427-8	. PLATE,FUEL TANK CAP BEARING	1	28
-100	416-53	. HANDLE,FUEL TANK CAP.	1	28
		/ATTACHING PARTS/		
-101	□AN122697	. PIN	1	

MODEL 35 PARTS CATALOG

FIG. & INDEX NO.	PART NO.	DESCRIPTION	UNITS PER ASSY	USABLE ON CODE
55 -	□35-921241-1	. PLACARD,91/96 GRADE FUEL /WHITE/.	2	6
-102	□35-921241-3	. PLACARD,91/96 GRADE FUEL /BLACK/.	2	6
	□35-921243-1	. PLACARD,100/130 GRADE FUEL /WHITE/.	2	12
	□35-921243-3	. PLACARD,100/130 GRADE FUEL /BLACK/.	2	12
	□35-921252-1	. PLACARD,100/130 GRADE FUEL 39 GAL. /WHITE/.	2	13
	□35-921252-3	. PLACARD,100/130 GRADE FUEL 39 GAL. /BLACK/.	2	13
	□35-921252-5	. PLACARD,100/130 GRADE FUEL 40 GAL. /WHITE/.	2	36
	□35-921252-7	. PLACARD,100/130 GRADE FUEL 40 GAL. /BLACK/.	2	36
	□35-921238-1	. PLACARD,FUEL FILLER CAP 91/96 OCTANE /WHITE/.	1	6
	□35-921238-3	. PLACARD,FUEL FILLER CAP 91/96 OCTANE /BLACK/.	1	6
-103	□95-921016-1	. PLACARD,CAUTION,DO NOT INSERT /WHITE/.	2	12
	□95-921016-3	. PLACARD,CAUTION,DO NOT INSERT /BLACK/.	2	12
-104	□95-921018-1	. PLACARD,FUEL 39 GAL. /WHITE/.	2	12
	□95-921018-3	. PLACARD,FUEL 39 GAL. /BLACK/.	2	12
-105	□35-924148	. PLACARD,FUEL CELL SUMP DRAIN.	2	5
	□37810-1	. CAP ASSY,FUEL FILLER.	1	23
-106	□C37656-41	. HANDLE,FUEL TANK CAP.	1	23
-107	□37059	. PIN,HANDLE.	1	23
-108	□37117	. PLATE,FUEL TANK CAP BEARING.	1	23
-109	□MS9021-110	. O RING,FUEL TANK CAP /SUPERSEDES 37615-110/	1	23
-110	37685-2	. BASE,FUEL TANK CAP.	1	23
-111	□37617-339	. O RING,FUEL TANK CAP.	1	23
-112	□37691	. RETAINER,FUEL TANK CAP.	1	23
-113	□37693	. SPRING,FUEL TANK CAP.	1	23
-114	□38038	. LOCK,FUEL TANK CAP.	1	23
-115	38104	. COUPLING,FUEL TANK CAP CHAIN.	1	23
-116	AN381-3-8	. PIN,COTTER.	1	23

CODE EFFECTIVITY

CODE EFFECTIVITY

1 D-5331 THRU D-5725	2 D-5726 THRU D-6561
3 D-6562 AND AFTER	4 D-5726 AND AFTER
5 D-5331 AND AFTER	6 D-5331 THRU D-6561
7 D-5726 THRU D-6161	8 D-5331 THRU D-6107
9 D-6108 THRU D-6561	10 D-5331 THRU D-7828
11 D-7829 AND AFTER	12 D-6562 THRU D-6974
13 D-6975 THRU D-7309	14 D-6632,D-6874 THRU D-7067
15 D-6562 THRU D-6873, EXCEPT D-6632	16 D-6842 THRU D-7309
17 D-6562 THRU D-6654	18 D-6655 AND AFTER
19 D-5331 THRU D-6285	20 D-6286 THRU D-6841
21 D-6162 THRU D-6561	22 D-6746 THRU D-6974
23 D-6746 AND AFTER EXCEPT D-7310 THRU D-7319	24 D-6975 AND AFTER EXCEPT D-7310 THRU D-7319
25 D-6286 THRU D-7309	26 D-7310 THRU D-7319
27 D-5726 THRU D-6745	28 D-5331 THRU D-6745
29 D-5331 THRU D-7309	30 D-5726 THRU D-7079
31 D-7080 AND AFTER	32 D-6562 THRU D-7079
33 D-5331 THRU D-7067	34 D-7068 AND AFTER
35 D-6562 THRU D-7309	36 D-7310 AND AFTER
37 D-6632,D-6874 AND AFTER	38 D-5331 THRU D-6873 EXCEPT D-6632
39 D-7068 THRU D-7309	40 D-5726 THRU D-7309

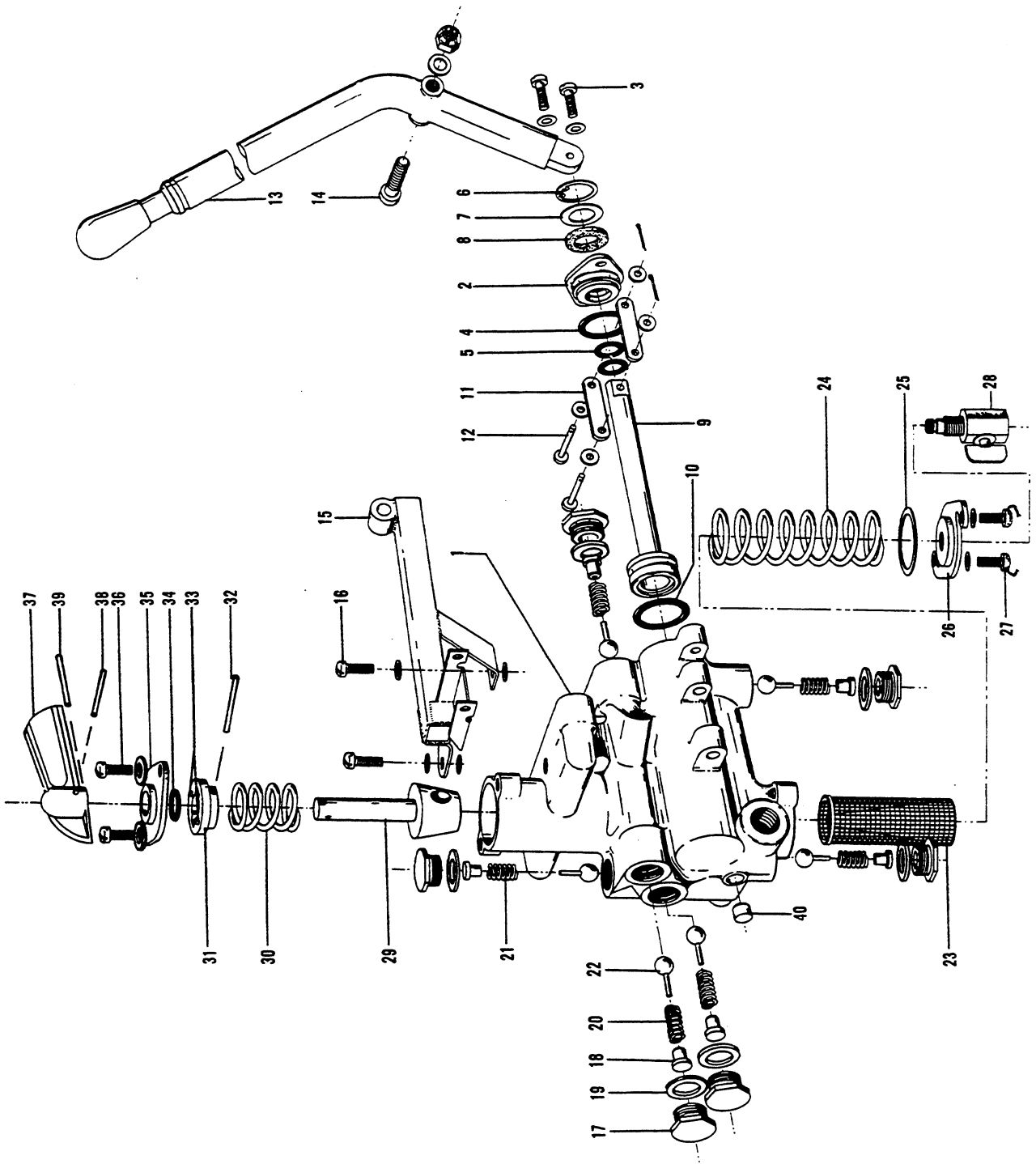


Figure 56. Fuel Unit (D-4866 thru D-5331)

FIG. & INDEX NO.	PART NO.	DESCRIPTION	UNITS PER ASSY	USABLE ON CODE		
					1	2
56	□35-924230-7	UNIT ASSY,FUEL /SEE FIG. 54 FOR NHA/	REF	1		
- 1	35-924249	• HOUSING,FUEL UNIT	1	1		
- 2	35-924232-1	• HEAD,FUEL PUMP CYLINDER /ATTACHING PARTS/	1	1		
- 3	AN500-10-10	• SCREW	2			
	AN936-A10	• WASHER	2			
		-----*				
- 4	□2-2045-2-15	• PACKING	1	1		
- 5	□2-2045-2-8	• PACKING	2	1		
- 6	□NAS50-77	• RING,SNAP	1	1		
- 7	□AN960-716L	• WASHER	1	1		
- 8	□102808-4B012	• WASHER	1	1		
- 9	□35-924236	• PISTON,EMERGENCY HAND PUMP	1	1		
- 10	□2-2045-2-15	• PACKING	1	1		
- 11	□35-924234	• LINK,PISTON ROD /ATTACHING PARTS/	2	1		
- 12	AN392-11	• PIN	2			
	□AN960-6L	• WASHER	4			
	□AN380-2-1	• PIN,COTTER	2			
		-----*				
- 13	□35-924245	• HANDLE ASSY,EMERGENCY HAND PUMP /ATTACHING PARTS/	1	1		
- 14	□AN4-20	• BOLT	1			
	□AN960-416	• WASHER	1			
	□AN310-4	• NUT	1			
	□AN380-2-2	• PIN	1			
		-----*				
- 15	35-924239	• SUPPORT ASSY,FUEL UNIT HANDLE /ATTACHING PARTS/	1	1		
- 16	AN500-10-10	• SCREW	2			
	AN936-A10	• WASHER	2			
	□AN960-10	• WASHER	2			
		-----*				
- 17	□35-924096	• PLUG,CHECK VALVE RETAINER	6	1		
- 18	□35-924097	• GUIDE,CHECK VALVE	6	1		
- 19	□AN6290-6	• GASKET	6	1		
- 20	□111504ZA0020-22	• SPRING	5	1		
- 21	□111504ZF0020-14	• SPRING	1	1		
- 22	□35-924237	• VALVE ASSY,FUEL UNIT	6	1		
- 23	□45-924091	• STRAINER ASSY,FUEL	1	1		
- 24	□111504ZT0324-3	• SPRING	1	1		
- 25	□35-921181	• GASKET,FUEL STRAINER PLATE	1	1		
- 26	□50-920057	• PLATE,FUEL STRAINER LOCK & SEAL /ATTACHING PARTS/	1	1		
- 27	□AN500A10-10	• SCREW	2			
	□AN960-10L	• WASHER	2			
		-----*				
- 28	180B	• VALVE	1	1		
	□K9000S-1A	• VALVE /ALTERNATE FOR 180B/	1	1		
	□35-924235-3	• VALVE ASSY,FUEL SELECTOR /SPARE ASSY/	1	1		
- 29	35-924235	• VALVE ASSY,FUEL SELECTOR	1	1		
- 30	111504ZV0100-3	• SPRING	1	1		
- 31	35-924229	• RETAINER,DETENT BALL /ATTACHING PARTS/	1	1		
- 32	52-022-094-0625	• PIN,ROLL	1			
		-----*				
- 33	NO NUMBER	• BEARING,BALL /3/16 OD GRADE I/	2	1		
- 34	□2-2045-2-7	• PACKING	1	1		

FIG. & INDEX NO.	PART NO.	1	2	3	4	5	6	7	DESCRIPTION	UNITS PER ASSY	USABLE ON CODE	
56 - 35	□35-924231	CAP,FUEL SELECTOR /ATTACHING PARTS/	1	1	
- 36	AN500-10-10	SCREW	2		
	AN936-A10	WASHER	2		
		-----*										
- 37	□35-924251-1	HANDLE,FUEL UNIT /SUPERSEDES 35-924251/ /ATTACHING PARTS/	1	1	
	MS20392-1-23	PIN,/SPARE ASSY/	1		
	AN381-2-1	PIN,COTTER /SPARE ASSY/	1		
- 38	52-022-094-0625	PIN,ROLL	1		
- 39	□52-022-094-0437	PIN,ROLL	1		
		-----*										
- 40	AN932-2	PLUG	1	1	

CODE EFFECTIVITY

1 D-4866 THRU D-5330

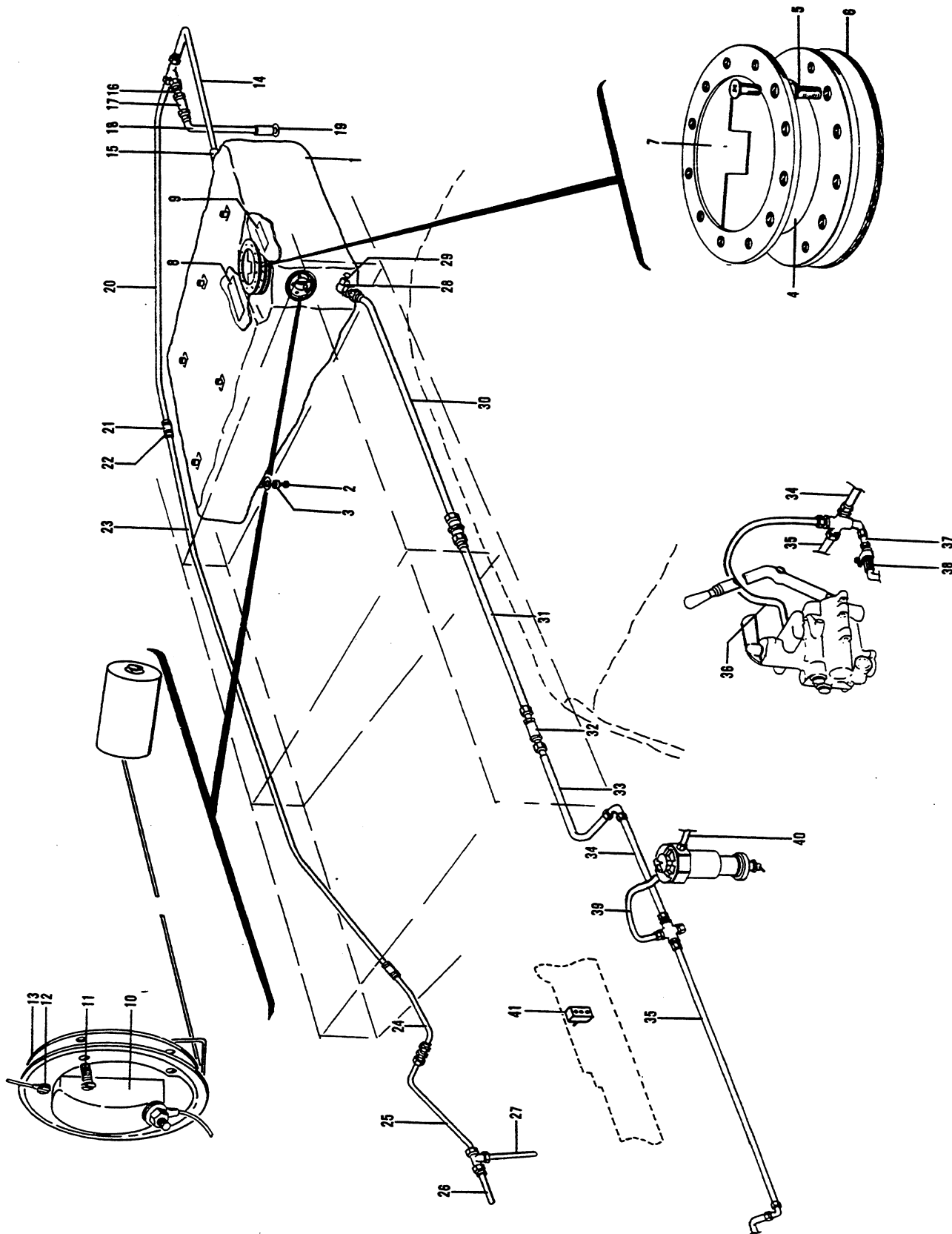


Figure 57. Wing Auxiliary Fuel Cells

MODEL 35 PARTS CATALOG

FIG. & INDEX NO.	PART NO.	DESCRIPTION	UNITS PER ASSY	USABLE ON CODE
		1 2 3 4 5 6 7		
57	35-921228	CELL INSTL,AUXILIARY FUEL	NP	1
	35-921228-51	CELL INSTL,AUXILIARY FUEL	NP	2
- 1	35-921222-5	• CELL ASSY,LH /SUPERSEDES FCD-36589/	1	3
	35-921222-7	• CELL ASSY,LH	1	4
	35-921222-2	• CELL ASSY,RH	1	6
	FCD-33214	• CELL,FUEL	1	6
	35-921222-6	• CELL ASSY,RH /SUPERSEDES FCD-36590/	1	7
	35-921222-8	• CELL ASSY,RH	1	8
- 2	□CCA-3400	• VALVE,DRAIN /ATTACHING PARTS/	2	5
- 3	□35-921533	• CLAMP	1	
	□35-921532	• WASHER	1	
- 4	35-921221-3	• ADAPTER ASSY,FUEL FILLER CAP. /ATTACHING PARTS/	2	5
- 5	□AN74-3	• BOLT	12	
	□AN960-416L	• WASHER	12	
	AN509-10R9	• SCREW	12	
- 6	□35-921502	• GASKET,ADAPTER ASSY	2	5
	□416-85	• CAP ASSY /SUPERSEDES 416-25-10/	2	10
- 7	416-85	• CAP ASSY /SUPERSEDES 416-85-10/	2	11
- 8	□35-921241-1	• PLACARD,FUEL IDENTIFICATION /BLACK/	2	5
	□35-921241-3	• PLACARD,FUEL IDENTIFICATION /RED/ /ALTERNATE FOR 35-921241-1/	2	5
- 9	□35-921229-1	• PLACARD,FUEL SERVICE /BLACK/	2	5
	□35-921229-3	• PLACARD,FUEL SERVICE /RED/ /ALTERNATE FOR 35-921229-1/	2	5
- 10	□1518770	• TRANSMITTER,LH	1	5
	□1518771	• TRANSMITTER,RH /ATTACHING PARTS/	1	5
- 11	□AN502-10-6	• SCREW	4	
- 12	□AN502-10-8	• SCREW	1	
- 13	□35-921503	• GASKET	1	5
- 14	35-921228-47	• TUBE ASSY,VENT LH	1	5
	35-921228-48	• TUBE ASSY,VENT RH /ATTACHING PARTS/	1	5
- 15	□AN737-22	• CLAMP	2	
	106242-4-00300	• TUBING	2	5
	□AN824-4D	• TEE	2	5
- 16	35-921228-45	• TUBE ASSY,VENT	2	5
- 17	□1111-517700	• VALVE,CHECK	2	12
	□1111-595272	• VALVE,CHECK /SUPERSEDES 366-00/	2	13
- 18	35-921221-41	• TUBE ASSY,VENT	2	5
- 19	□50-920077	• FLANGE ASSY,FUEL VENT	2	5
- 20	35-921228-43	• TUBE ASSY,VENT LH	1	5
	35-921228-44	• TUBE ASSY,VENT RH	1	5
- 21	106200H4-13	• HOSE /ORDER 1/4 ID MIL6000X3-1/4/ /ATTACHING PARTS/	NP	5
- 22	□AN737-22	• CLAMP	12	
- 23	35-921228-39	• TUBE,VENT LH	1	5
	35-921228-40	• TUBE,VENT RH	1	5
- 24	35-921228-37	• TUBE ASSY,VENT LH	1	5
	35-921228-38	• TUBE ASSY,VENT RH	1	5
	□AN815-4D	• UNION	2	5
- 25	35-921228-35	• TUBE ASSY,VENT	1	5
- 26	35-921228-33	• TUBE ASSY,VENT	1	5
	□AN824-4D	• TEE	1	5

FIG. & INDEX NO.	PART NO.	DESCRIPTION	UNITS PER ASSY	USABLE ON CODE
57 - 27	35-921228-49	• TUBE ASSY, VENT.	1	5
- 28	35-921228-31	• STRAINER ASSY, FUEL LH	1	5
	35-921228-32	• STRAINER ASSY, FUEL RH	1	5
		/ATTACHING PARTS/		
- 29	□35-921533	• CLAMP, FUEL STRAINER	1	
		-----*		
- 30	35-921228-13	• TUBE, FUEL LH.	1	5
	35-921228-14	• TUBE, FUEL RH.	1	5
- 31	35-951228-11	• TUBE, FUEL LH.	1	5
	35-921228-12	• TUBE, FUEL RH.	1	5
- 32	□1111-517702	• VALVE, CHECK	2	14
	□367-00	• VALVE, CHECK	2	15
- 33	□35-921228-9	• TUBE, FUEL LH.	1	5
	□35-921228-10	• TUBE, FUEL RH.	1	5
	□AN821-6D	• ELBOW	2	5
- 34	35-921228-1	• TUBE, FUEL LH.	1	5
- 35	35-921228-5	• TUBE, FUEL RH.	1	5
- 36	35-921228-3	• TUBE, FUEL	1	1
	□AN815-6	• UNION	1	1
	□AN6290-6	• GASKET	1	1
	□AN822-6D	• ELBOW	1	5
	□AN816-6D	• NIPPLE	3	5
	AN918-2	• CROSS	1	5
- 37	35-921228-7	• TUBE, FUEL	1	5
	□AN816-6D	• NIPPLE	1	5
	AN910-2	• COUPLING	1	5
	AN912-1D	• REDUCER	1	5
	AN823-4D	• ELBOW	1	5
- 38	□K9000S-1A	• VALVE /SUPERSEDES 180B-1/	1	5
- 39	35-921228-53	• TUBE ASSY, FUEL	1	16
	35-921228-57	• TUBE ASSY, FUEL	1	17
- 40	35-921228-55	• TUBE ASSY, FUEL	1	2
	AN912-1D	• REDUCER	1	2
	35-522930	• PLACARD, FUEL STRAINER	1	5
	□35-361156-1	• PLACARD, FUSELAGE TO LH WING WIRE SPLICE	1	5
	□35-361157-1	• PLACARD, FUSELAGE TO RH WING WIRE SPLICE	1	5
	□35-324358	• PLACARD, LEFT PANEL	1	1
	35-324358-1	• PLACARD, LEFT PANEL	1	2
- 41	35-364202-9	• SWITCH, AUXILIARY FUEL INDICATOR	1	2
		/SEE FIG. 58 FOR NHA/		
	MS20365-632	• NUT	1	2

CODE EFFECTIVITY

- 1 D-4866 THRU D-5330
- 3 D-4866 THRU D-6423
- 5 D-4866 THRU D-6561
- 7 D-4890 THRU D-6416
- 9 D-4890 THRU D-6561
- 11 D-5726 THRU D-6561
- 13 D-6035 THRU D-6561
- 15 D-6053 THRU D-6561
- 17 D-5463 THRU D-6561

CODE EFFECTIVITY

- 2 D-5331 THRU D-6561
- 4 D-6424 THRU D-6561
- 6 D-4866 THRU D-4889
- 8 D-6417 THRU D-6561
- 10 D-5331 THRU D-6161
- 12 D-4866 THRU D-6034
- 14 D-4866 THRU D-6052
- 16 D-5331 THRU D-5462