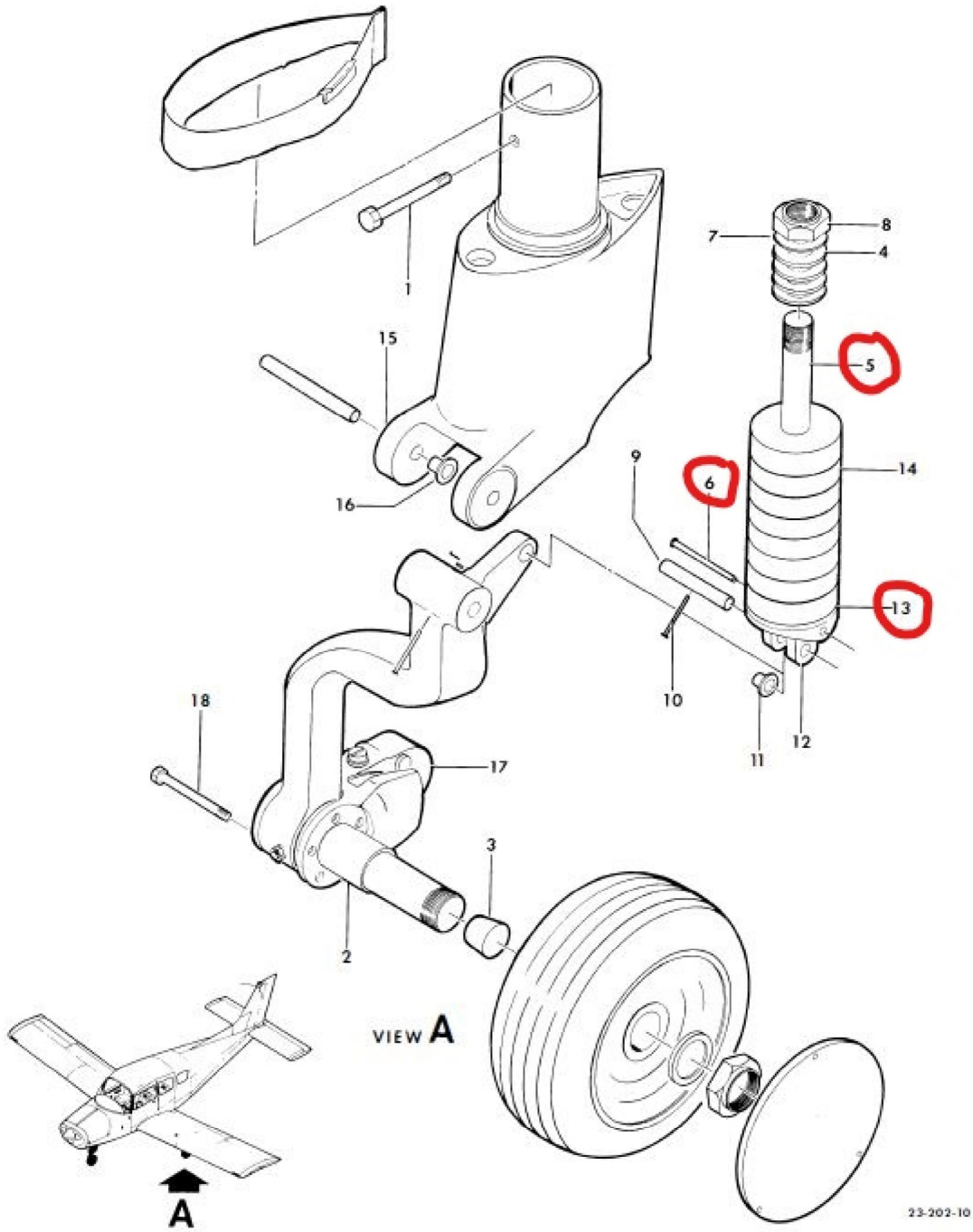


BEECHCRAFT ILLUSTRATED PARTS CATALOG  
B19,C23,C24R SERIES AERO CENTER AIRPLANES  
SERIALS MB-866,M-1971,M-1980,MC-533,MC-537 & AFTER



BEECHCRAFT ILLUSTRATED PARTS CATALOG  
 B19,C23,C24R SERIES AERO CENTER AIRPLANES  
 SERIALS MB-866,M-1971,M-1980,MC-533,MC-537 & AFTER

FIG. & ITEM NO.	PART NO.	DESCRIPTION							UNITS PER ASSY	USABLE ON CODE
		1	2	3	4	5	6	7		
202	169-810000-609	MAIN LANDING GEAR ASSY,LH /COMPLETE/ . . . . .							1	1
		/WHEN ORDERING SPECIFY TIRE SIZE/								
	169-810000-610	MAIN LANDING GEAR ASSY,RH /COMPLETE/ . . . . .							1	1
		/WHEN ORDERING SPECIFY TIRE SIZE/								
	169-810000-659	MAIN LANDING GEAR ASSY,LH . . . . .							1	1
		/LESS TIRE,WHEEL,AND BRAKE/								
	169-810000-660	MAIN LANDING GEAR ASSY,RH . . . . .							1	1
		/LESS TIRE,WHEEL AND BRAKE/								
		/ATTACHING PARTS/								
- 1	NAS1669-6L7	JO-BOLT . . . . .							2	
	NAS1751-6L7	JO-BOLT,OVERSIZE/SEE BEECHCRAFT SI NO. 1078/ . . . . .							2	
- 2	169-810000-131	. . . SPACER,LANDING GEAR AXLE. . . . .							1	4
		/SEE BEECHCRAFT S.I. NO.1168/								
	169-810064-1	. . . SPACER,LANDING GEAR AXLE. . . . .							1	5
		/USE WITH 153-00900 RING AND 154-00800 FE								
- 3	16	. . . CORK,LANDING GEAR AXLE /GRADE XXXX/ . . . . .							1	1
- 4	169-810000-119	. . . WASHER,LANDING GEAR SHOCK ABSORBER. . . . .							3	1
	169-810000-117	. . . ROD ASSY,MAIN LANDING GEAR SHOCK ABSORBER . . . . .							1	1
5	169-810000-113	. . . ROD,MAIN LANDING GEAR SHOCK ABSORBER. . . . .							1	1
		/ATTACHING PARTS/								
6	MS9048-180	. . . PIN . . . . .							1	1
- 7	AN960-1616	. . . WASHER. . . . .							1	1
- 8	MS20364-1614A	. . . NUT . . . . .							1	1
		↓								
	169-810012-15	. . . COMPRESSOR ASSY,SHOCK ABSORBER. . . . .							1	1
		/ATTACHING PARTS/								
- 9	169-810000-81	. . . PIN . . . . .							1	1
- 10	MS20392-1-41	. . . PIN . . . . .							1	1
	AN960-4	. . . WASHER. . . . .							1	1
	MS24665-130	. . . PIN,COTTER. . . . .							1	1
		↓								
- 11	169-810012-7	. . . BUSHING,COMPRESSOR FITTING. . . . .							2	1
- 12	169-810012-13	. . . FITTING,COMPRESSOR. . . . .							1	1
13	169-810000-57	. . . PLATE,LANDING GEAR SHOCK ABSORBER COMPRESSOR. . . . .							1	1
- 14	169-380003	. . . RUBBER DISC,SHOCK ABSORBER. . . . .							8	1
		/DO NOT BREAK OR MIX SETS/								
- 15	169-810011-25	. . . HOUSING ASSY,MAIN LANDING GEAR. . . . .							1	1
- 16	169-810011-11	. . . BUSHING,LANDING GEAR HOUSING. . . . .							2	1
	169-810011-31	. . . BUSHING,LANDING GEAR HOUSING/OVERSIZE/. . . . .							2	1
	169-300003-5	. . . WHEEL,BRAKE & TIRE ASSY,MAIN/17.50 DIA/ . . . . .							2	2
	169-300003-35	. . . WHEEL,BRAKE & TIRE ASSY,MAIN/17.50 DIA/ . . . . .							2	3
- 17	169-300003-13	. . . BRAKE ASSY/SEE FIG.218/ . . . . .							NP	4
		/ORDER 169-300003-33 BRAKE ASSY/								
	169-300003-33	. . . BRAKE ASSY/SEE FIG.218A/ . . . . .							1	5
		/ATTACHING PARTS/								
- 18	AN4-24A	. . . BOLT. . . . .							4	1
	AN960-416	. . . WASHER. . . . .							4	1
	130909N32	. . . NUT . . . . .							4	1
		↓								