

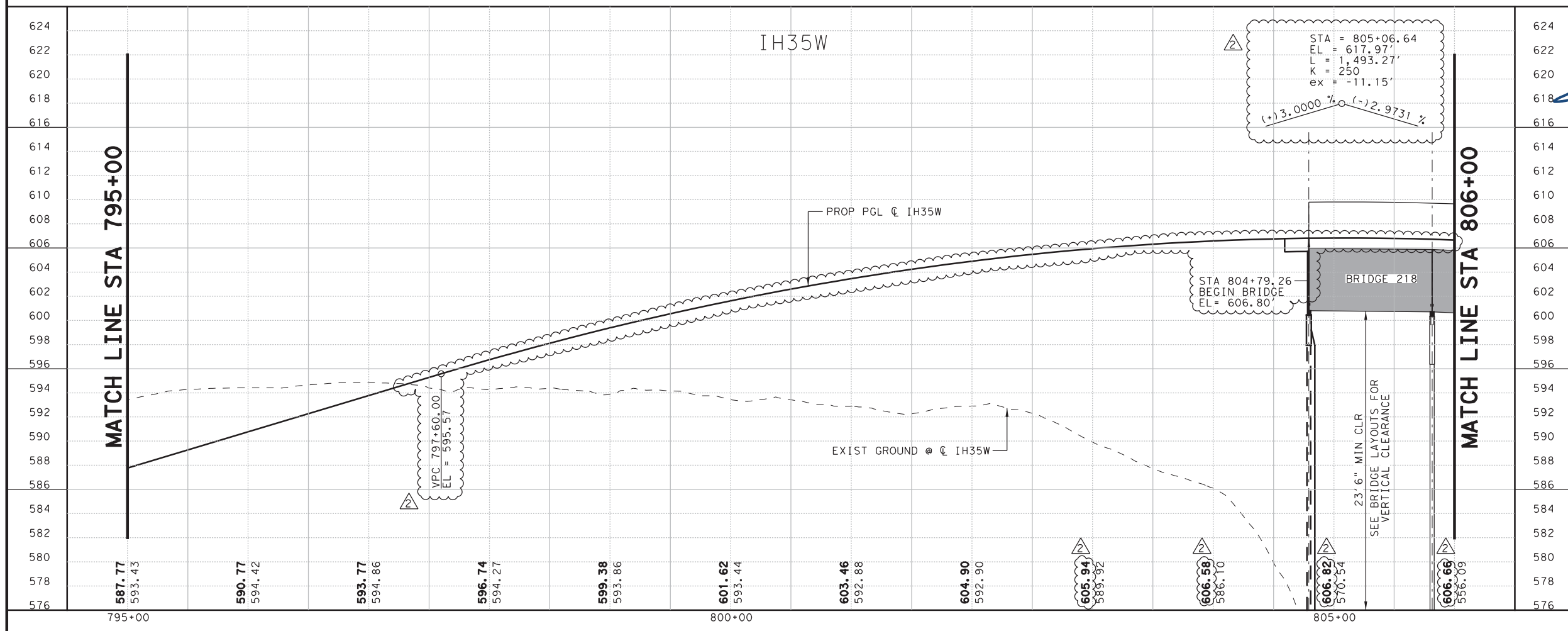
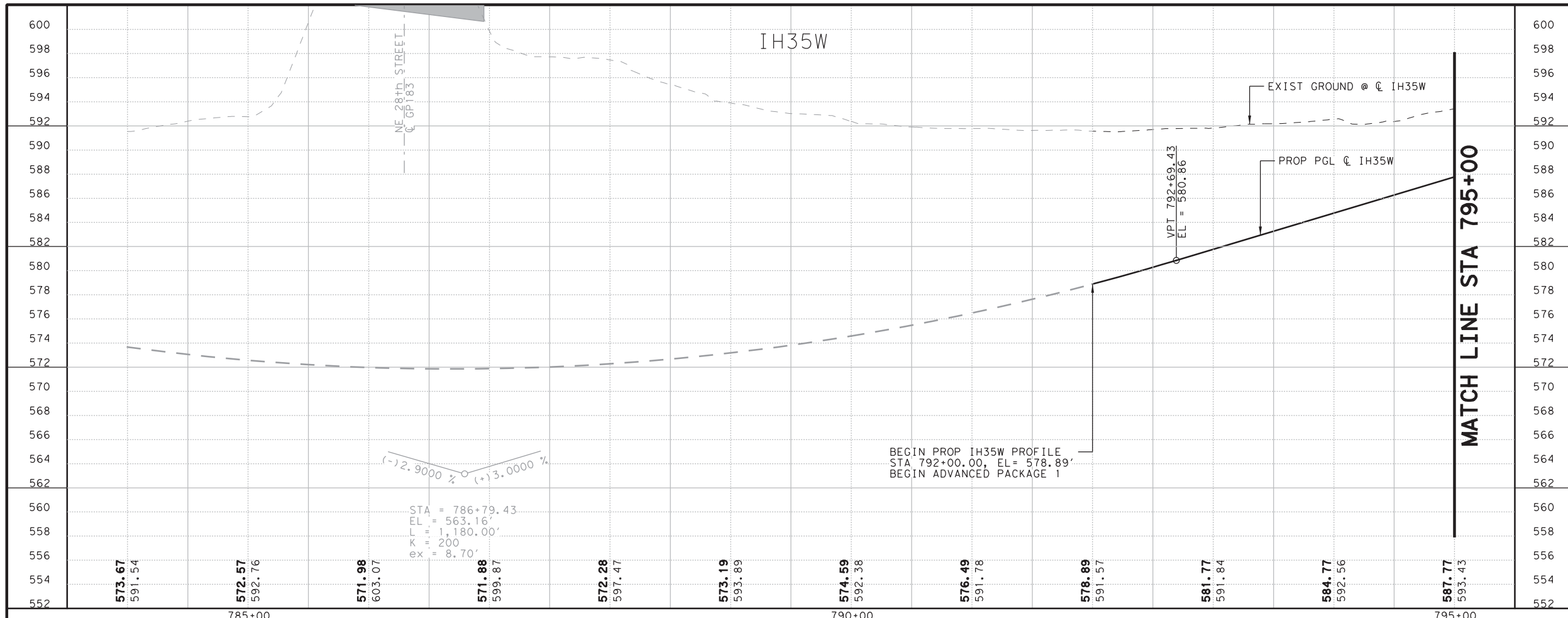


**Highway Factors Attachment – Vertical alignment of I-35W southbound toll lanes in the vicinity of the crash**

**Fort Worth, TX**

**HWY21FH005**

(4 pages)



IFC REV	DATE	BY	DESCRIPTION
0	0	11/15/2013	JBP AP01-S IFC SUBMITTAL
3	1	06/30/2014	JBP IFC NDC S-006
5	2	09/08/2014	JBP IFC NDC S-010

NOTE:  
VERTICAL CLEARANCES AS SHOWN ARE MINIMUM CLEARANCES TO CRITICAL POINTS AT THE BRIDGE. THEY DO NOT REFLECT ACTUAL CLEARANCE AT THE PGL LABELED. REFER TO BRIDGE LAYOUT FOR LOCATION OF MINIMUM CLEARANCE

09/08/2014

©2014 Texas Department of Transportation

north tarrant express | segments 3

north tarrant infrastructure, llc

OTHON CONSULTING ENGINEERS  
F-1471 HOUSTON · AUSTIN · DALLAS

Louis Berger DCE  
F-12788

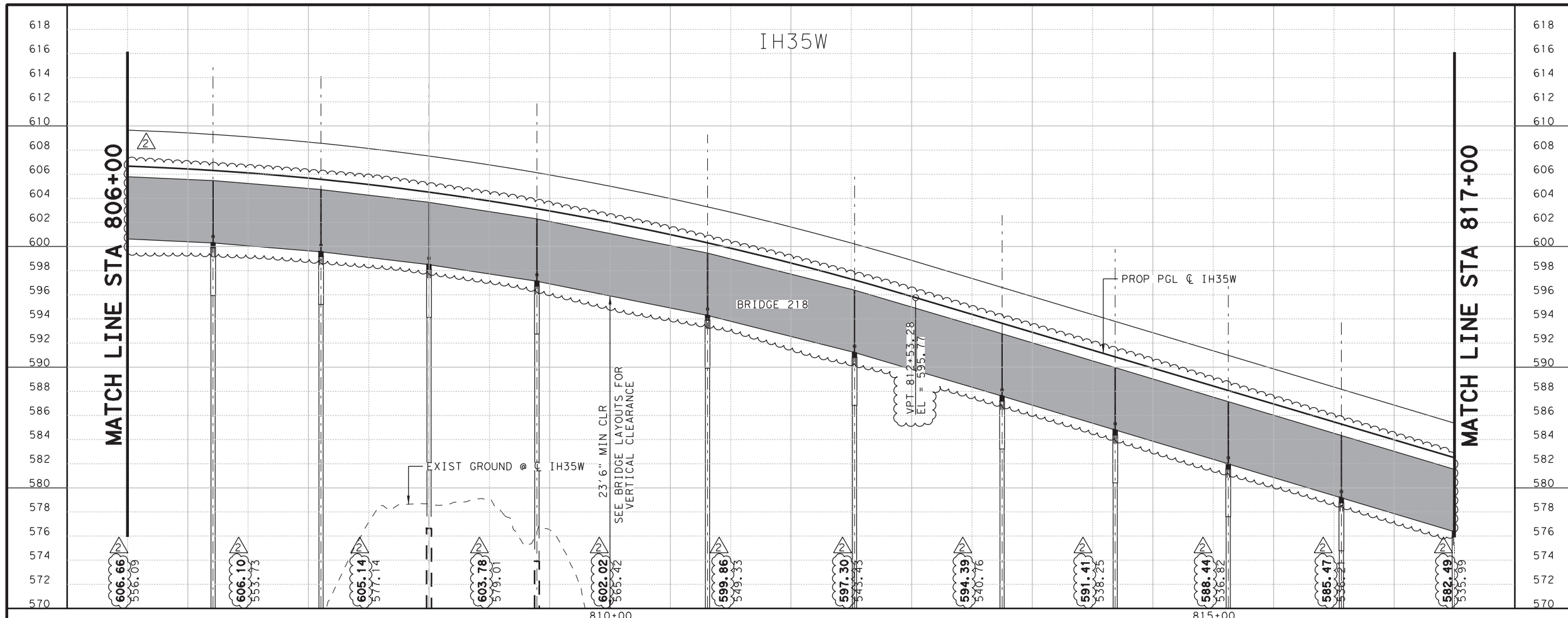
NORTH TARRANT EXPRESS - SEGMENT 3AS  
Advanced Package 01

ROADWAY PROFILES  
MANAGED LANES

STA 792+00 TO STA 806+00  
HORIZ.: 1" = 100'  
VERT.: 1" = 10'

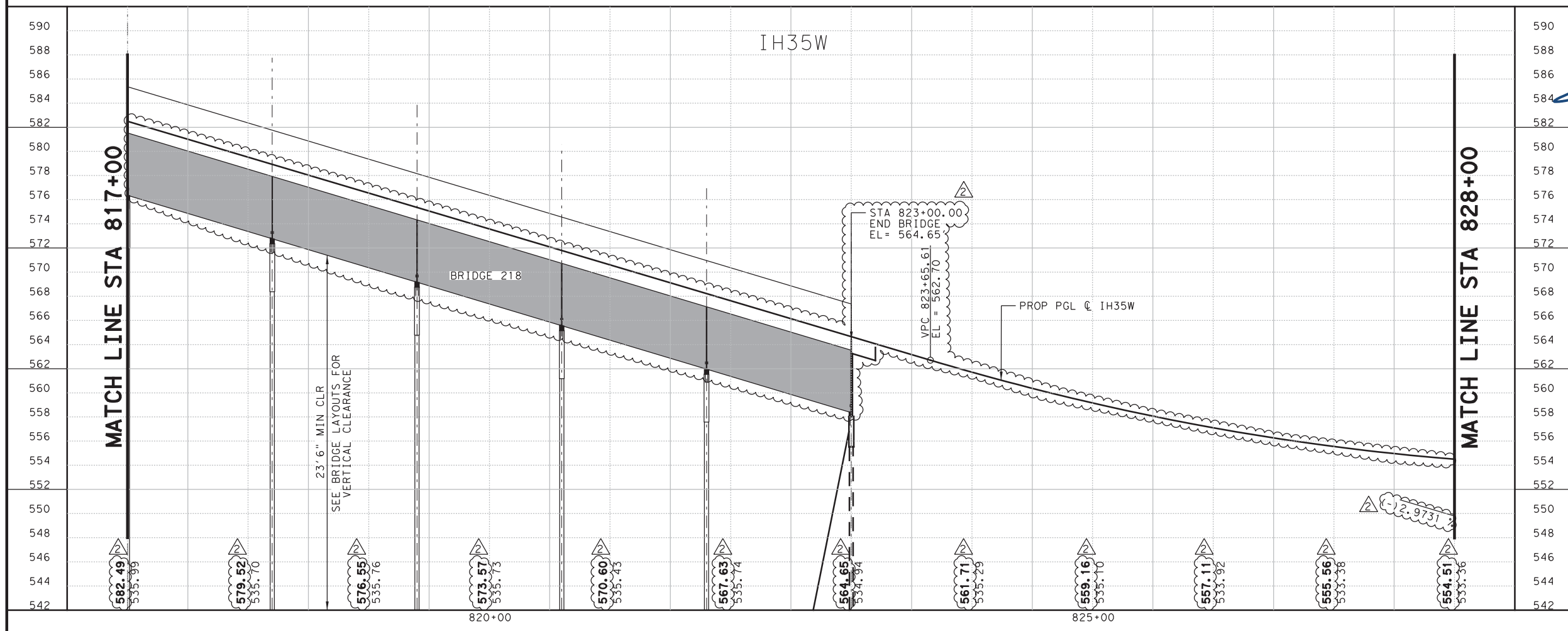
FED. RD. DIV. NO.	FEDERAL AID PROJECT NO.	SHEET NO.
6	IM 0355 (152)	RDW-71
STATE	DISTRICT	COUNTY
TEXAS	FT. WORTH	TARRANT
CONT	SECT	JOB
0014	16	179
		HIGHWAY NO
		IH35W

c:\pwworking\temp\temp090811\NTEXAS-AP01-RDW-FRM001.dgn 09/08/2014 13:30:36



IFC REV	DATE	BY	DESCRIPTION
0	0	11/15/2013	JBP AP01-S IFC SUBMITTAL
3	1	06/30/2014	JBP IFC NDC S-006
5	2	09/08/2014	JBP IFC NDC S-010

NOTE:  
VERTICAL CLEARANCES AS SHOWN ARE MINIMUM CLEARANCES TO CRITICAL POINTS AT THE BRIDGE. THEY DO NOT REFLECT ACTUAL CLEARANCE AT THE PGL LABELED. REFER TO BRIDGE LAYOUT FOR LOCATION OF MINIMUM CLEARANCE



09/08/2014

©2014 Texas Department of Transportation

north tarrant express | segments 3

north tarrant infrastructure, llc

OTHON CONSULTING ENGINEERS  
F-1471 HOUSTON · AUSTIN · DALLAS

Louis Berger DCE  
F-12788

**NORTH TARRANT EXPRESS - SEGMENT 3AS**  
Advanced Package 01

**ROADWAY PROFILES  
MANAGED LANES**

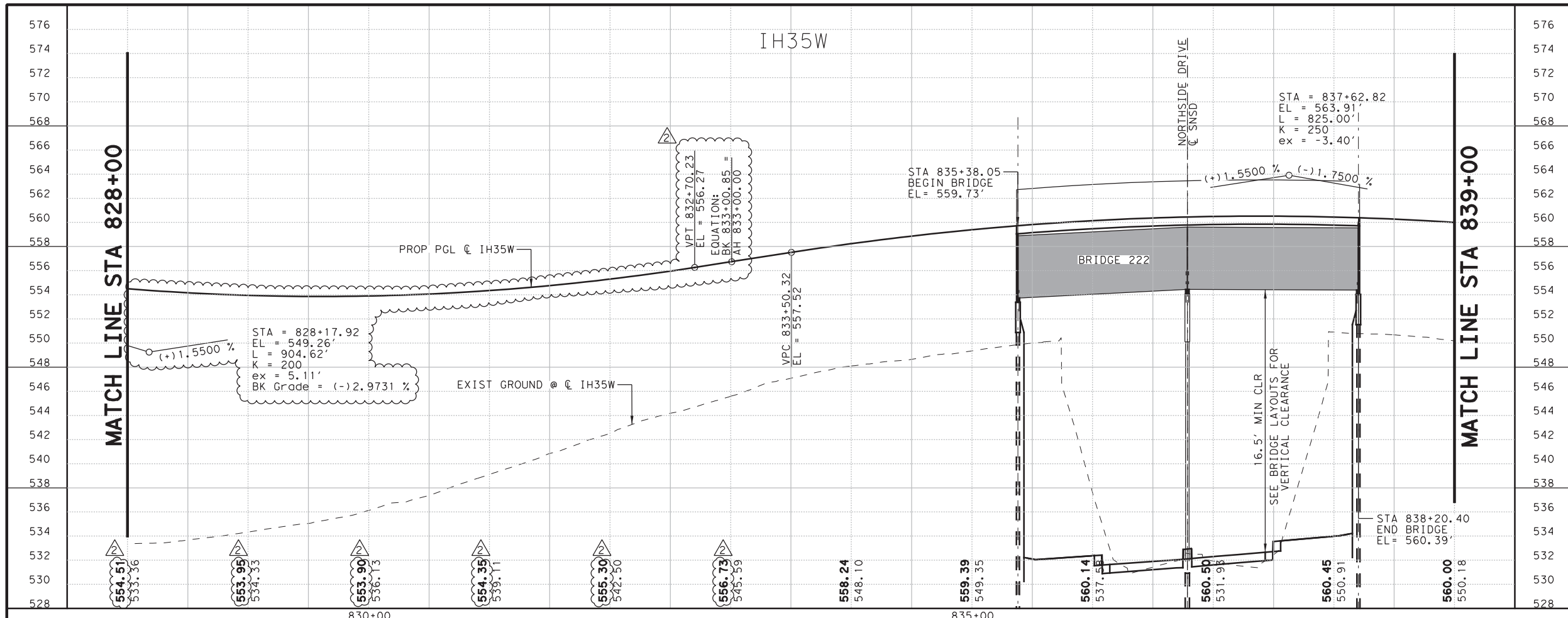
STA 806+00 TO STA 828+00

HORIZ.: 1" = 100'  
VERT.: 1" = 10'

SHEET 2 OF 4

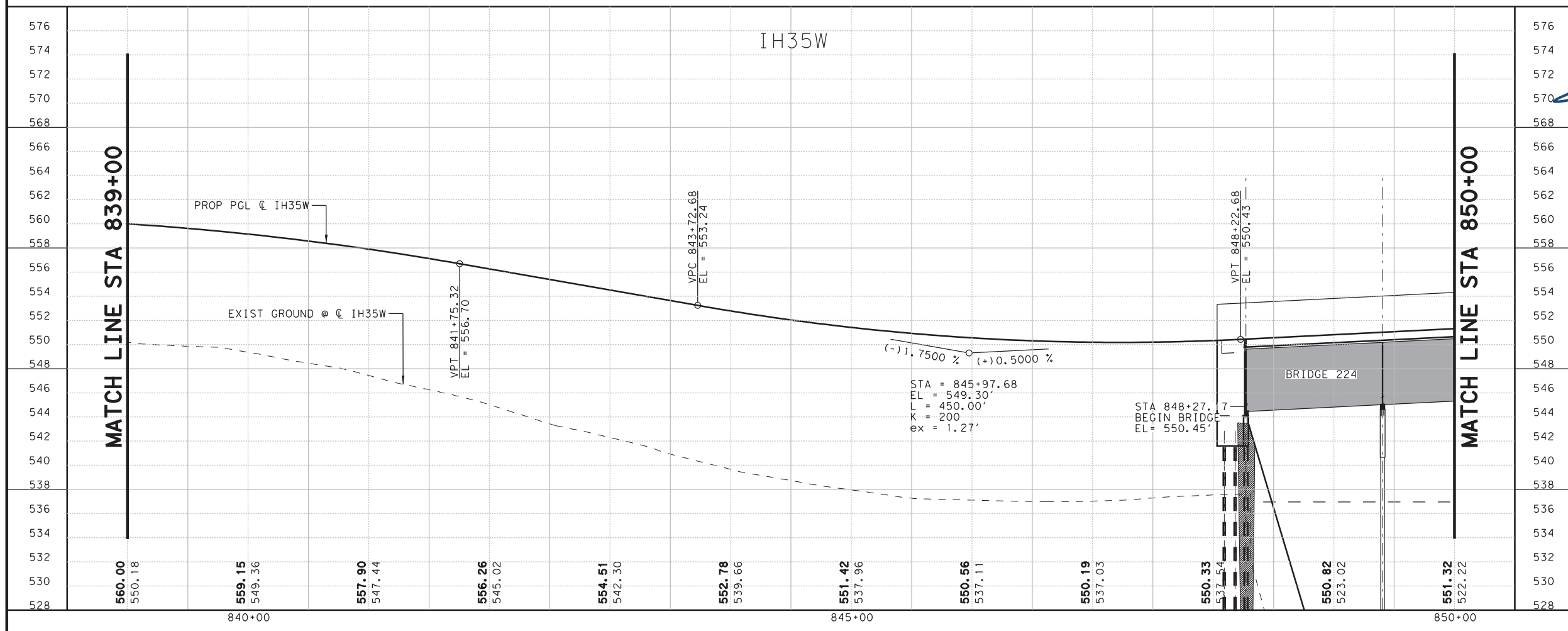
FED. RD. DIV. NO.	FEDERAL AID PROJECT NO.	SHEET NO.
6	IM 0355 (152)	RDW-72
STATE	DISTRICT	COUNTY
TEXAS	FT. WORTH	TARRANT
CONT	SECT	JOB
0014	16	179
		HIGHWAY NO
		IH35W

c:\pww\temp\um93811\NTEXAS-AP01-RDWAY\_PROFILE.dgn



IFC REV	DATE	BY	DESCRIPTION
0	11/15/2013	JBP	AP01-S IFC SUBMITTAL
3	06/30/2014	JBP	IFC NDC S-006
5	09/08/2014	JBP	IFC NDC S-010

NOTE:  
VERTICAL CLEARANCES AS SHOWN ARE MINIMUM CLEARANCES TO CRITICAL POINTS AT THE BRIDGE. THEY DO NOT REFLECT ACTUAL CLEARANCE AT THE PGL LABELED. REFER TO BRIDGE LAYOUT FOR LOCATION OF MINIMUM CLEARANCE



09/08/2014

©2014 Texas Department of Transportation

north tarrant express | segments 3

north tarrant infrastructure, llc

OTHON CONSULTING ENGINEERS  
F-1471 HOUSTON · AUSTIN · DALLAS

Louis Berger DCE  
F-12788

NORTH TARRANT EXPRESS - SEGMENT 3AS  
Advanced Package 01

ROADWAY PROFILES  
MANAGED LANES  
STA 828+00 TO STA 850+00  
HORIZ.: 1" = 100'  
VERT.: 1" = 10'

FED. RD. DIV. NO.	FEDERAL AID PROJECT NO.	SHEET NO.
6	IM 0355 (152)	RDW-73
STATE	DISTRICT	COUNTY
TEXAS	FT. WORTH	TARRANT
CONT	SECT	JOB
0014	16	179
		HIGHWAY NO
		IH35W

c:\pwworking\temp\09082014\NTE3AS-AP01-RD73-FRML003.dgn 09/08/2014 13:30:42