



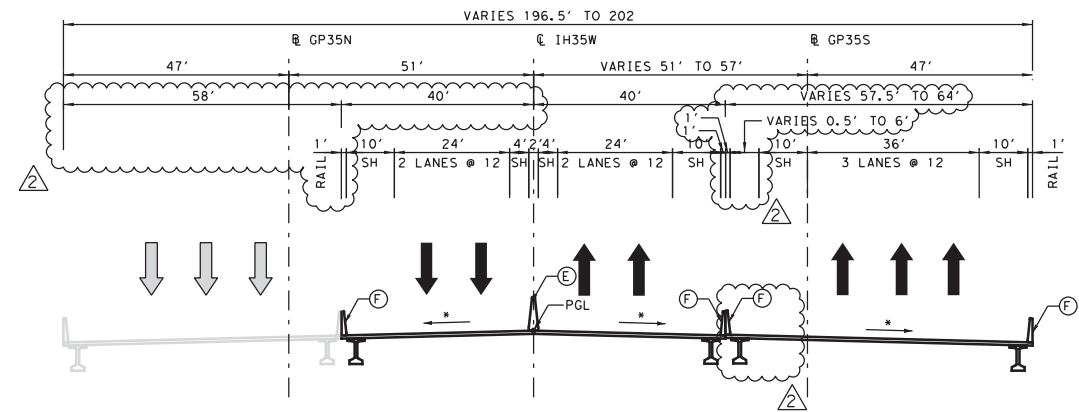
Highway Factors Attachment – Typical section of I-35W in the vicinity of the crash

Fort Worth, TX

HWY21FH005

(3 pages)

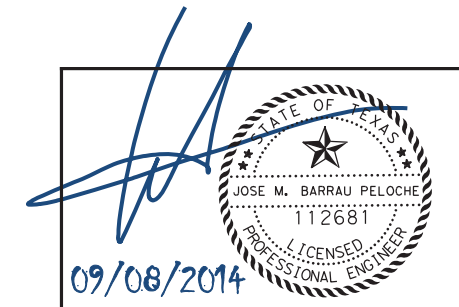
IFC REV	DATE	BY	DESCRIPTION
0	11/15/2013	JBP	AP01-S IFC SUBMITTAL
3	06/30/2014	JBP	IFC NDC S-006
5	09/08/2014	JBP	IFC NDC S-010



10 **TYPICAL SECTION**
BRIDGE 218
STA 805+00 TO STA 823+00

- ROADWAY LEGEND**
- (A) MBGF
 - (B) RIPRAP (4")
 - (C) RIPRAP (5")
 - (D) CABLE BARRIER
 - (E) TRF RL-SSCB (42")
 - (F) TRF RL-SSTR (36")
 - (G) CURB & GUTTER
 - (H) TRF RL FDN-(RW-BTR)
 - (I) TRF RL FDN-(TRF)
 - (J) TRF RL-C411
 - (K) NOISE BARRIER
 - (L) SIDEWALK (4") (CONC)
 - (M) RET WALL
 - (N) LANDSCAPE
 - (O) PAVERS
 - (Q) DRILL SEED
 - (R) PED RAMP
 - (S) DRIVEWAY
 - (T) PEDESTRIAN RAIL PR1
 - (X) TYP SECT
 - ➔ TRAF FLOW
 - ➞ TRAF FLOW OTHER PACKAGE

NOTE 1. REFER TO PROPOSED PAVEMENT STRUCTURE FOR ADDITIONAL INFORMATION
 *SEE HORIZONTAL ALIGNMENT, SUPERELEVATION AND CROSS SLOPE LAYOUT



©2014 Texas Department of Transportation

north tarrant
express | segments 3

north tarrant
infrastructure, llc

OTHON
CONSULTING ENGINEERS
F-1471 HOUSTON · AUSTIN · DALLAS

Louis Berger DCE
F-12788

NORTH TARRANT EXPRESS - SEGMENT 3AS
Advanced Package 01

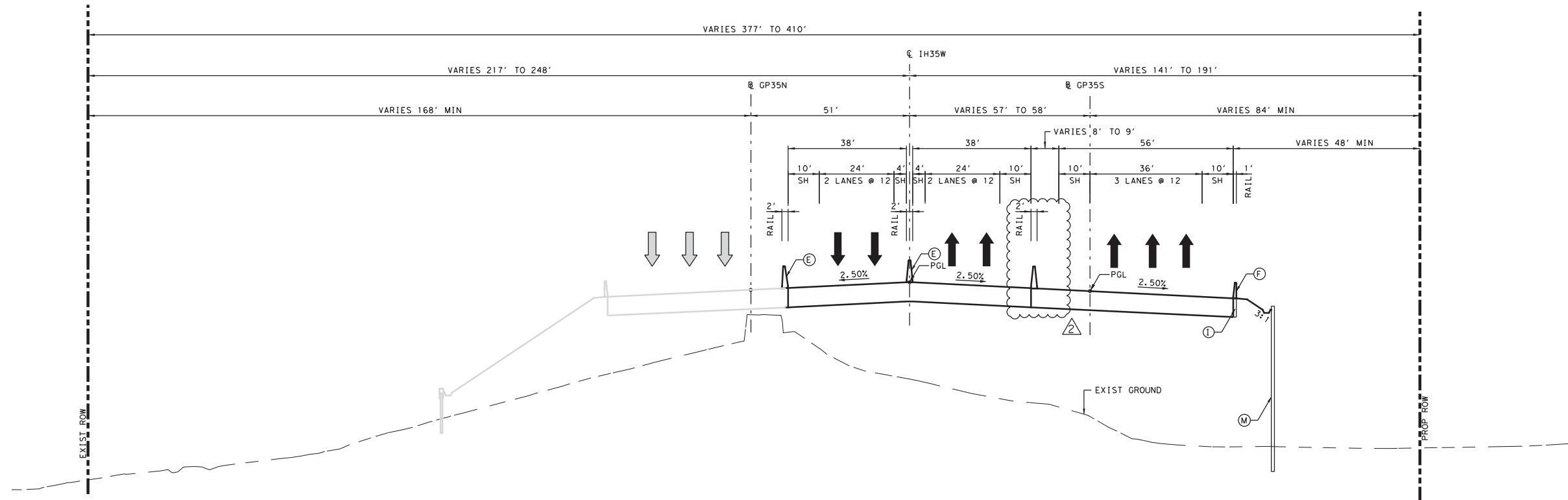
PROPOSED TYPICAL SECTIONS

NTS SHEET 10 OF 16

FED. RD. DIV. NO.	FEDERAL AID PROJECT NO.	SHEET NO.
6	IM 0355 (152)	RDW-16
STATE	DISTRICT	COUNTY
TEXAS	FT. WORTH	TARRANT
CONT	SECT	JOB
0014	16	179
		HIGHWAY NO
		IH35W

c:\pwworking\mbarra\projects\NTE3AS_AP01\RDW_TYP010.dgn 10/01/2014 10:46:55

IFC REV	DATE	BY	DESCRIPTION
0	11/15/2013	JBP	AP01-S IFC SUBMITTAL
3	06/30/2014	JBP	IFC NDC S-006
5	09/08/2014	JBP	IFC NDC S-010



11 **TYPICAL SECTION**
STA 823+00 TO STA 825+00

- ROADWAY LEGEND**
- (A) MBGF
 - (B) RIPRAP (4")
 - (C) RIPRAP (5")
 - (D) CABLE BARRIER
 - (E) TRF RL-SSCB (42")
 - (F) TRF RL-SSTR (36")
 - (G) CURB & GUTTER
 - (H) TRF RL FDN-(RW-BTR)
 - (I) TRF RL FDN-(TRF)
 - (J) TRF RL-C411
 - (K) NOISE BARRIER
 - (L) SIDEWALK (4") (CONC)
 - (M) RET WALL
 - (N) LANDSCAPE
 - (O) PAVERS
 - (Q) DRILL SEED
 - (R) PED RAMP
 - (S) DRIVEWAY
 - (T) PEDESTRIAN RAIL PR1
 - (X) TYP SECT
 - ➔ TRAF FLOW
 - ➞ TRAF FLOW OTHER PACKAGE

NOTE 1. REFER TO PROPOSED PAVEMENT STRUCTURE FOR ADDITIONAL INFORMATION
*SEE HORIZONTAL ALIGNMENT, SUPERELEVATION AND CROSS SLOPE LAYOUT

[Signature]

 09/08/2014

©2014 Texas Department of Transportation

north tarrant
express | segments 3

north tarrant
infrastructure, llc

OTHON
CONSULTING ENGINEERS
F-1471 HOUSTON · AUSTIN · DALLAS

Louis Berger DCE
F-12788

NORTH TARRANT EXPRESS - SEGMENT 3AS
Advanced Package 01
PROPOSED TYPICAL SECTIONS

NTS SHEET 11 OF 16

FED. RD. DIV. NO.	FEDERAL AID PROJECT NO.	SHEET NO.
6	IM 0355 (152)	RDW-17
STATE	DISTRICT	COUNTY
TEXAS	FT. WORTH	TARRANT
CONT	SECT	JOB
0014	16	179
		HIGHWAY NO
		IH35W

c:\pww\temp\090825\NTE3AS_AP01_ROWY_TYPP011.dgn 18:46:57