



**Highway Factors Attachment – Excerpts of signage as-built plans on I-35W in the vicinity  
of the crash**

**Fort Worth, TX**

**HWY21FH005**

**(8 pages)**

IFC REV	DATE	BY	DESCRIPTION
0	03/02/2019	ES	TRAFFIC OPS-SIGNS IFC
32	03/05/2018	SSB	IFC NDC DCR-S-1186
34	05/02/2018	CB	IFC NDC DCR-S-1268
53	03/28/2019	SSB	IFC NDC DCR-S-1573
54	04/18/2019	SSB	IFC NDC DCR-S-1584

**LEGEND**

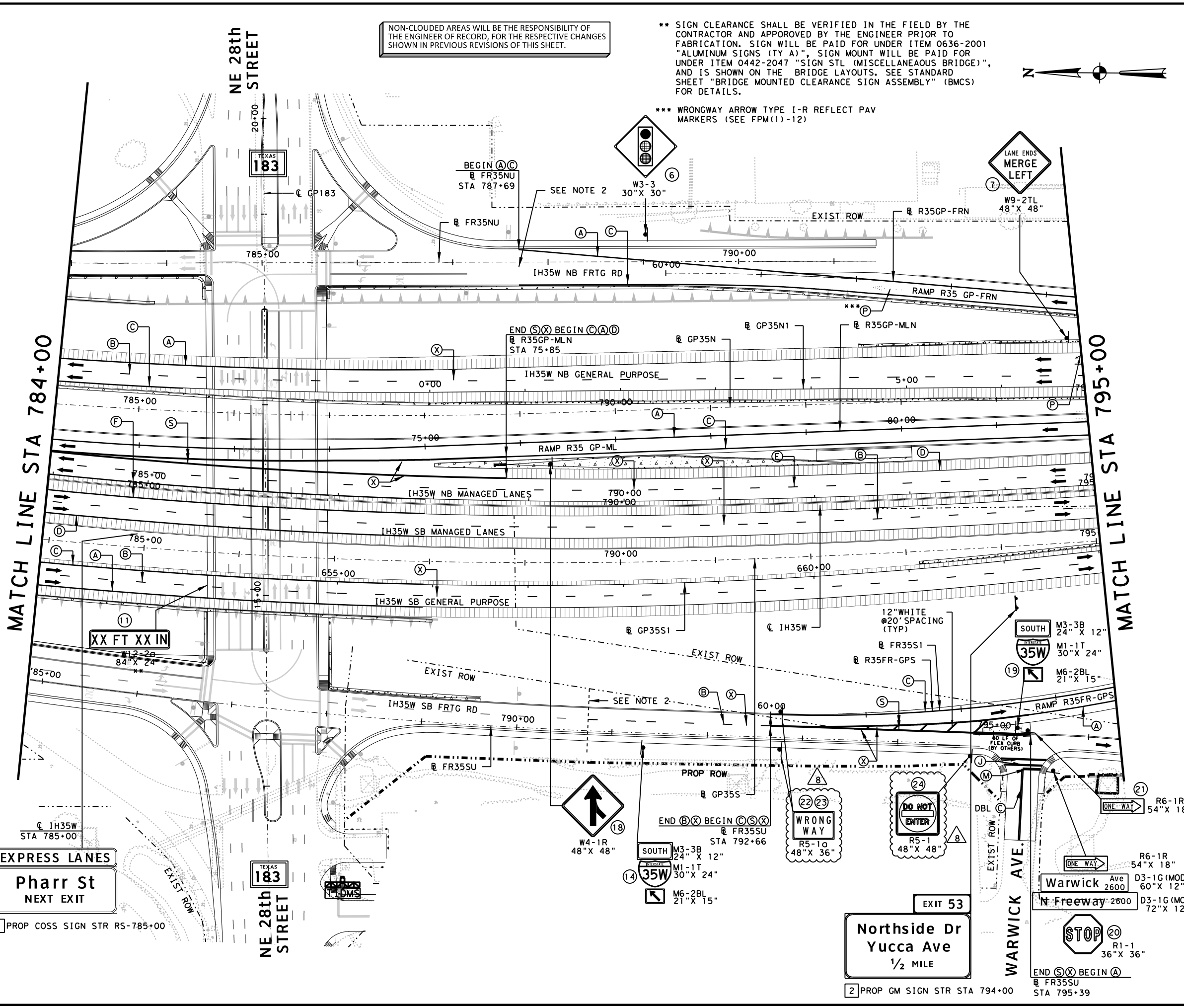
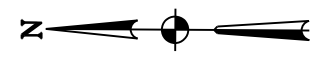
- (A) REFL PAV MKR TY I (4") (W) (SLD)
- (B) REFL PAV MKR TY I (4") (W) (BRK)
- (C) REFL PAV MKR TY I (4") (Y) (SLD)
- (D) REFL PAV MKR TY I (6") (W) (SLD)
- (E) REFL PAV MKR TY I (6") (W) (BRK)
- (F) REFL PAV MKR TY I (6") (Y) (SLD)
- (G) REFL PAV MKR TY I (8") (W) (DOT)
- (H) REFL PAV MKR TY I (8") (W) (SLD)
- (J) REFL PAV MKR TY I (12") (W) (SLD)
- (K) REFL PAV MKR TY I (12") (W) (LNDP)
- (M) REFL PAV MKR TY I (24") (W) (SLD)
- (N) REFL PAV MKR TY I (24") (W) (WORD)
- (P) REFL PAV MKR TY I (W) (ARROW)
- (Q) REFL PAV MKR TY I (W) (DBL ENTRY)
- (S) REFL PAV MKR TY I (W) (EXIT GORE)
- (T) REFL PAV MKR TY I (W) (EXIT GORE)
- (W) REFL PAV MKR TY I (Y) (MED NOSE)
- (X) REFL PAV MKR TY II C-R
- (Y) REFL PAV MKR TY II A-A
- ▼ YIELD TRIANGLE
- || RUMBLE STRIP
- # PROP LARGE SIGN
- ⊕ PROP SMALL SIGN

- NOTES:**
- CONTRACTOR TO INSTALL RUMBLE STRIP USING CONTINUOUS MILLED DEPRESSIONS, SEE TXDOT STANDARD "RS-10".
  - REFER TO SHEET TRA-93 & 94 FOR SIGNING AND PAVEMENT MARKING DESIGN ON SH183 & FRONTAGE ROAD.
  - SEE TYPICAL SECTIONS FOR ADDITIONAL INFORMATION.

NON-CLOUDED AREAS WILL BE THE RESPONSIBILITY OF THE ENGINEER OF RECORD, FOR THE RESPECTIVE CHANGES SHOWN IN PREVIOUS REVISIONS OF THIS SHEET.

\*\* SIGN CLEARANCE SHALL BE VERIFIED IN THE FIELD BY THE CONTRACTOR AND APPROVED BY THE ENGINEER PRIOR TO FABRICATION. SIGN WILL BE PAID FOR UNDER ITEM 0636-2001 "ALUMINUM SIGNS (TY A)", SIGN MOUNT WILL BE PAID FOR UNDER ITEM 0442-2047 "SIGN STL (MISCELLANEOUS BRIDGE)", AND IS SHOWN ON THE BRIDGE LAYOUTS. SEE STANDARD SHEET "BRIDGE MOUNTED CLEARANCE SIGN ASSEMBLY" (BMCS) FOR DETAILS.

\*\*\* WRONGWAY ARROW TYPE I-R REFLECT PAV MARKERS (SEE FPM(1)-12)



REV. 8 ONLY

4/18/2019

© 2019 Texas Department of Transportation

**north tarrant**  
express | segments 3

**north tarrant**  
infrastructure, llc F-15700

**OTHON**  
CONSULTING ENGINEERS  
F-1471 HOUSTON · AUSTIN · DALLAS

**NORTH TARRANT EXPRESS - SEGMENT 3AS**  
Corridor - Traffic Operations

**SIGNING & PAVEMENT MARKINGS LAYOUT**  
STA 784+00 TO STA 795+00

SCALE: 1" = 100' SHEET 5 OF 20

FED. DIV. NO.	FEDERAL AID PROJECT NO.	SHEET NO.
6	IM 0355 (152)	TRA-72
STATE	DISTRICT	COUNTY
TEXAS	FT. WORTH	TARRANT
CONT	SECT	JOB
0014	16	179
		HIGHWAY NO
		IH35W

02483 4/18/2019 3:13:20 PM R:\GROUP05\IN HOUSE\Segment 3\Signs and Markings\CADD\11 TRANTAS\TRAFF\_PLS\PM005.dgn











IFC REV	DATE	BY	DESCRIPTION
0	03/02/2015	ES	TRAFFIC OPS-SIGNS IFC
29	5/12/06/2017	TN	IFC NDC DCR-S-1110
32	6/03/07/2018	SSB	IFC NDC DCR-S-1186
34	7/05/02/2018	JWZ	IFC NDC DCR-S-1268
36	8/06/14/2018	SSB	IFC NDC DCR-S-1372

**LEGEND**

- (A) REFL PAV MRK TY I (4") (W) (SLD)
- (B) REFL PAV MRK TY I (4") (W) (BRK)
- (C) REFL PAV MRK TY I (4") (Y) (SLD)
- (D) REFL PAV MRK TY I (6") (W) (SLD)
- (E) REFL PAV MRK TY I (6") (W) (BRK)
- (F) REFL PAV MRK TY I (6") (Y) (SLD)
- (G) REFL PAV MRK TY I (8") (W) (DOT)
- (H) REFL PAV MRK TY I (8") (W) (SLD)
- (J) REFL PAV MRK TY I (12") (W) (SLD)
- (K) REFL PAV MRK TY I (12") (W) (LNDR)
- (M) REFL PAV MRK TY I (24") (W) (SLD)
- (N) REFL PAV MRK TY I (W) (WORD)
- (P) REFL PAV MRK TY I (W) (ARROW)
- (Q) REFL PAV MRK TY I (W) (DBL ARROW)
- (S) REFL PAV MRK TY I (W) (ENTR GORE)
- (T) REFL PAV MRK TY I (W) (EXIT GORE)
- (W) REFL PAV MRK TY I (Y) (MED NOSE)
- (X) REFL PAV MRKR TY II C-R
- (Y) REFL PAV MARK TY II A-A
- ▼ YIELD TRIANGLE
- || RUMBLE STRIP
- # PROP LARGE SIGN
- ⊙ PROP SMALL SIGN

**NOTES:**

- CONTRACTOR TO INSTALL RUMBLE STRIP USING CONTINUOUS MILLED DEPRESSIONS, SEE TXDOT STANDARD "RS-10".
- REFER TO SHEET TRA-95 & 96 FOR SIGNING AND PAVEMENT MARKING DESIGN FOR NORTHSIDE DR, YUCCA RD & FRONTAGE ROAD.
- SEE TYPICAL SECTIONS FOR ADDITIONAL INFORMATION.

REV. 8 ONLY

SRINIVASA S.N. BATTULA  
103341  
LICENSED PROFESSIONAL ENGINEER

6/14/2018

© 2018 Texas Department of Transportation

**north tarrant**  
express | segments 3

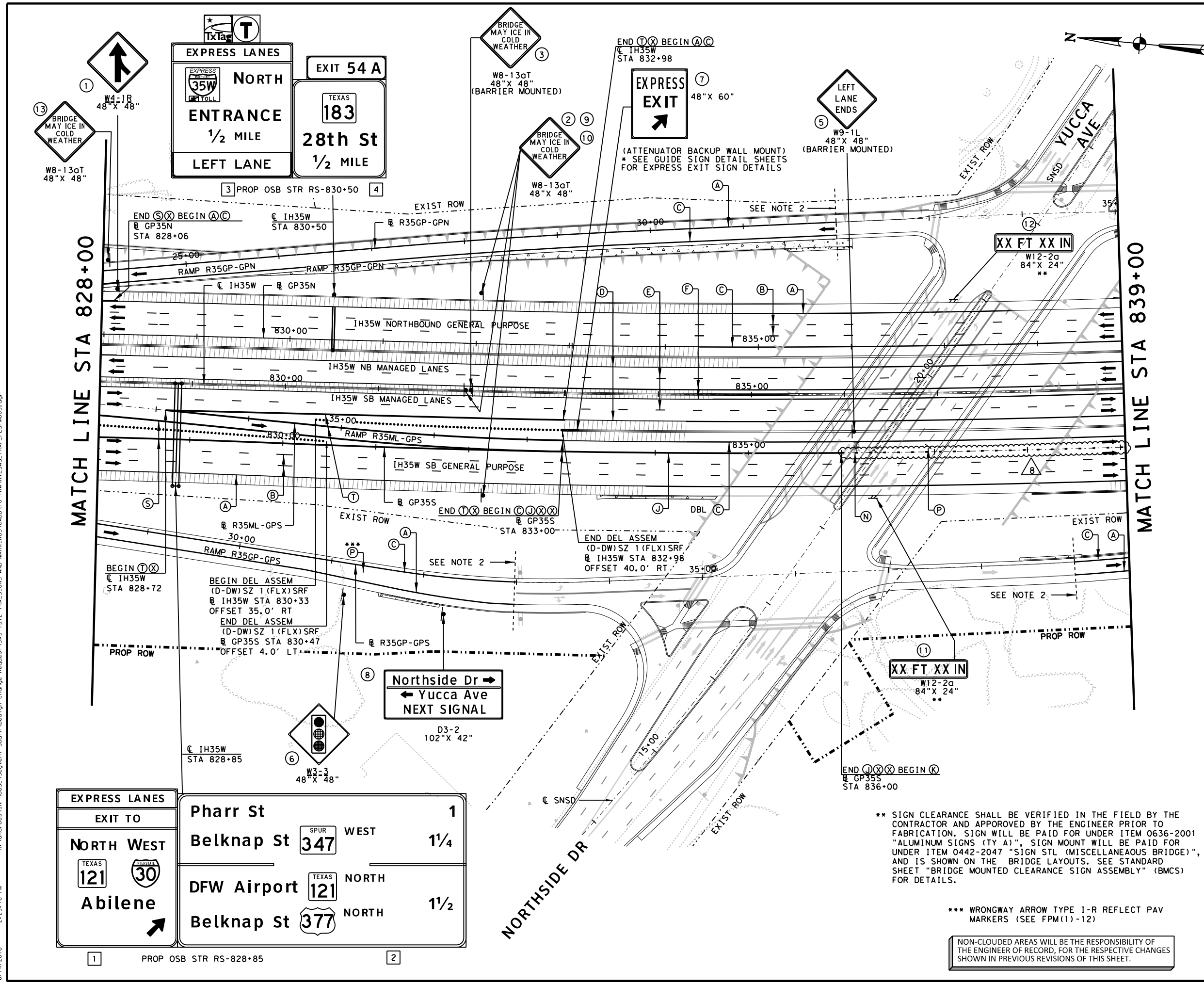
**north tarrant**  
infrastructure, llc F-15700

**OTHON**  
CONSULTING ENGINEERS  
F-1471 HOUSTON · AUSTIN · DALLAS

**NORTH TARRANT EXPRESS - SEGMENT 3AS**  
Corridor - Traffic Operations  
**SIGNING & PAVEMENT MARKINGS LAYOUT**  
STA 828+00 TO STA 839+00

SCALE: 1" = 100' SHEET 9 OF 20

FED. DIV. NO. 6	FEDERAL AID PROJECT NO. IM 0355 (152)	SHEET NO. TRA-76
STATE TEXAS	DISTRICT FT. WORTH	COUNTY TARRANT
CONT 0014	SECT 16	JOB 179 HIGHWAY NO. IH35W



\*\* SIGN CLEARANCE SHALL BE VERIFIED IN THE FIELD BY THE CONTRACTOR AND APPROVED BY THE ENGINEER PRIOR TO FABRICATION. SIGN WILL BE PAID FOR UNDER ITEM 0636-2001 "ALUMINUM SIGNS (TY A)", SIGN MOUNT WILL BE PAID FOR UNDER ITEM 0442-2047 "SIGN STL (MISCELLANEOUS BRIDGE)", AND IS SHOWN ON THE BRIDGE LAYOUTS. SEE STANDARD SHEET "BRIDGE MOUNTED CLEARANCE SIGN ASSEMBLY" (BMCS) FOR DETAILS.

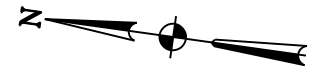
\*\*\* WRONGWAY ARROW TYPE I-R REFLECT PAV MARKERS (SEE FPM(1)-12)

NON-CLOUDED AREAS WILL BE THE RESPONSIBILITY OF THE ENGINEER OF RECORD, FOR THE RESPECTIVE CHANGES SHOWN IN PREVIOUS REVISIONS OF THIS SHEET.

6/14/2018 2:25:16 PM R:\GROUP05\IN HOUSE\Segment South\Design Change Request\345-1372 TRA-SIGNS AND MARKINGS\CADD\10 TRANTASAS\_TRAFF\_PLS\PM009.dgn  
 6/14/2018 2:25:16 PM R:\GROUP05\IN HOUSE\Segment South\Design Change Request\345-1372 TRA-SIGNS AND MARKINGS\CADD\10 TRANTASAS\_TRAFF\_PLS\PM009.dgn

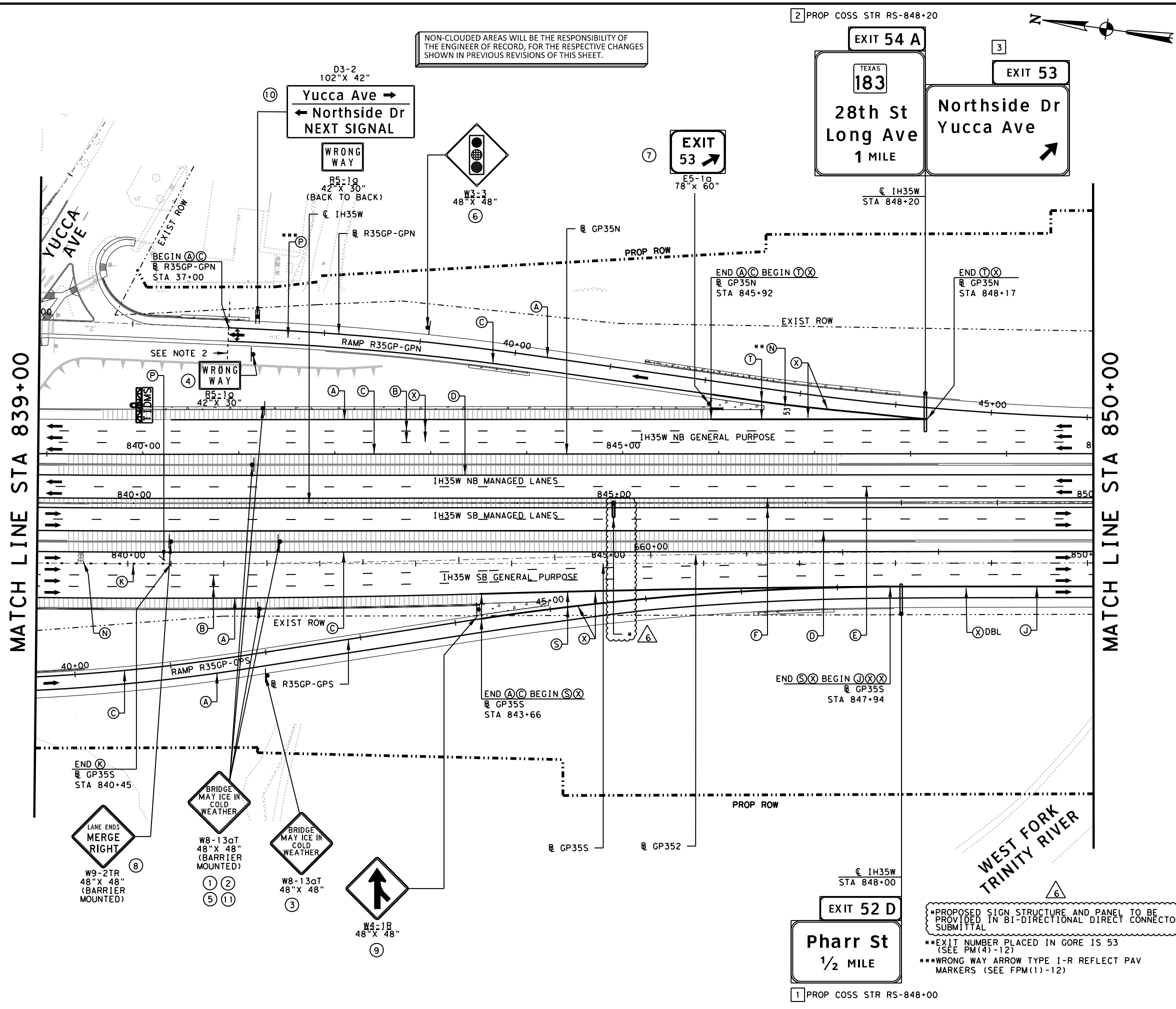
6501 F 10/11/2018 9:32:27 AM R:\GROUP05\IN HOUSE\Segment South\Design Change Request\345-1477 TRA-SIGNS AND MARKINGS\CADD\10 TRANTXAS\_TRAFF\_PLS\PM10.DGN

2 PROP COSS STR RS-848+20



IFC/REV	DATE	BY	DESCRIPTION
0	03/02/2015	ES	TRAFFIC OPS-SIGNS IFC
29	3	12/06/2017	TN IFC NDC DCR-S-1110
34	4	05/02/2018	SSB IFC NDC DCR-S-1268
36	5	06/14/2018	SSB IFC NDC DCR-S-1372
44	6	10/11/2018	SSB IFC NDC DCR-S-1477

NON-CLOUDED AREAS WILL BE THE RESPONSIBILITY OF THE ENGINEER OF RECORD, FOR THE RESPECTIVE CHANGES SHOWN IN PREVIOUS REVISIONS OF THIS SHEET.



**LEGEND**

- (A) REFL PAV MKR TY I (4") (W) (SLD)
- (B) REFL PAV MKR TY I (4") (W) (BRK)
- (C) REFL PAV MKR TY I (4") (Y) (SLD)
- (D) REFL PAV MKR TY I (6") (W) (SLD)
- (E) REFL PAV MKR TY I (6") (W) (BRK)
- (F) REFL PAV MKR TY I (6") (Y) (SLD)
- (G) REFL PAV MKR TY I (8") (W) (DOT)
- (H) REFL PAV MKR TY I (8") (W) (SLD)
- (J) REFL PAV MKR TY I (12") (W) (SLD)
- (K) REFL PAV MKR TY I (12") (W) (LNDR)
- (M) REFL PAV MKR TY I (24") (W) (SLD)
- (N) REFL PAV MKR TY I (W) (WORD)
- (P) REFL PAV MKR TY I (W) (ARROW)
- (Q) REFL PAV MKR TY I (W) (DBL ARROW)
- (S) REFL PAV MKR TY I (W) (ENTER GORE)
- (T) REFL PAV MKR TY I (W) (EXIT GORE)
- (W) REFL PAV MKR TY I (Y) (MED NOSE)
- (X) REFL PAV MKR TY II C-R
- (Y) REFL PAV MKR TY II A-A

▼ YIELD TRIANGLE  
 ||| RUMBLE STRIP  
 # PROP LARGE SIGN  
 \* PROP SMALL SIGN

- NOTES:**
- CONTRACTOR TO INSTALL RUMBLE STRIP USING CONTINUOUS MILLED DEPRESSIONS, SEE TXDOT STANDARD "RS-10".
  - REFER TO SHEET TRA-95 & 96 FOR SIGNING AND PAVEMENT MARKING DESIGN ON NORTHSIDE DRIVE, YUCCA ROAD AND FRONTAGE ROAD.
  - SEE TYPICAL SECTIONS FOR ADDITIONAL INFORMATION.

REV. 6 ONLY

10/11/2018

Texas Department of Transportation

**north tarrant**  
express | segments 3

**north tarrant**  
infrastructure, llc F-15700

**OTHON**  
CONSULTING ENGINEERS  
F-1471 HOUSTON · AUSTIN · DALLAS

**NORTH TARRANT EXPRESS - SEGMENT 3AS**  
Corridor - Traffic Operations  
**SIGNING & PAVEMENT MARKINGS LAYOUT**  
STA 839+00 TO STA 850+00

SCALE: 1" = 100' SHEET 10 OF 20

FED. PROJ. NO.	FEDERAL AID PROJECT NO.	SHEET NO.
6	IM 0355 (152)	TRA-77
STATE	DISTRICT	COUNTY
TEXAS	FT. WORTH	TARRANT
CONT	SECT	JOB
0014	16	179
		HIGHWAY NO
		IH35W

\*PROPOSED SIGN STRUCTURE AND PANEL TO BE PROVIDED IN BI-DIRECTIONAL DIRECT CONNECTOR SUBMITTAL  
 \*\*EXIT NUMBER PLACED IN GORE IS 53 (SEE PM(4)-12)  
 \*\*\*WRONG WAY ARROW TYPE I-R REFLECT PAV MARKERS (SEE FPM(1)-12)

EXIT 52 D  
**Pharr St**  
 1/2 MILE

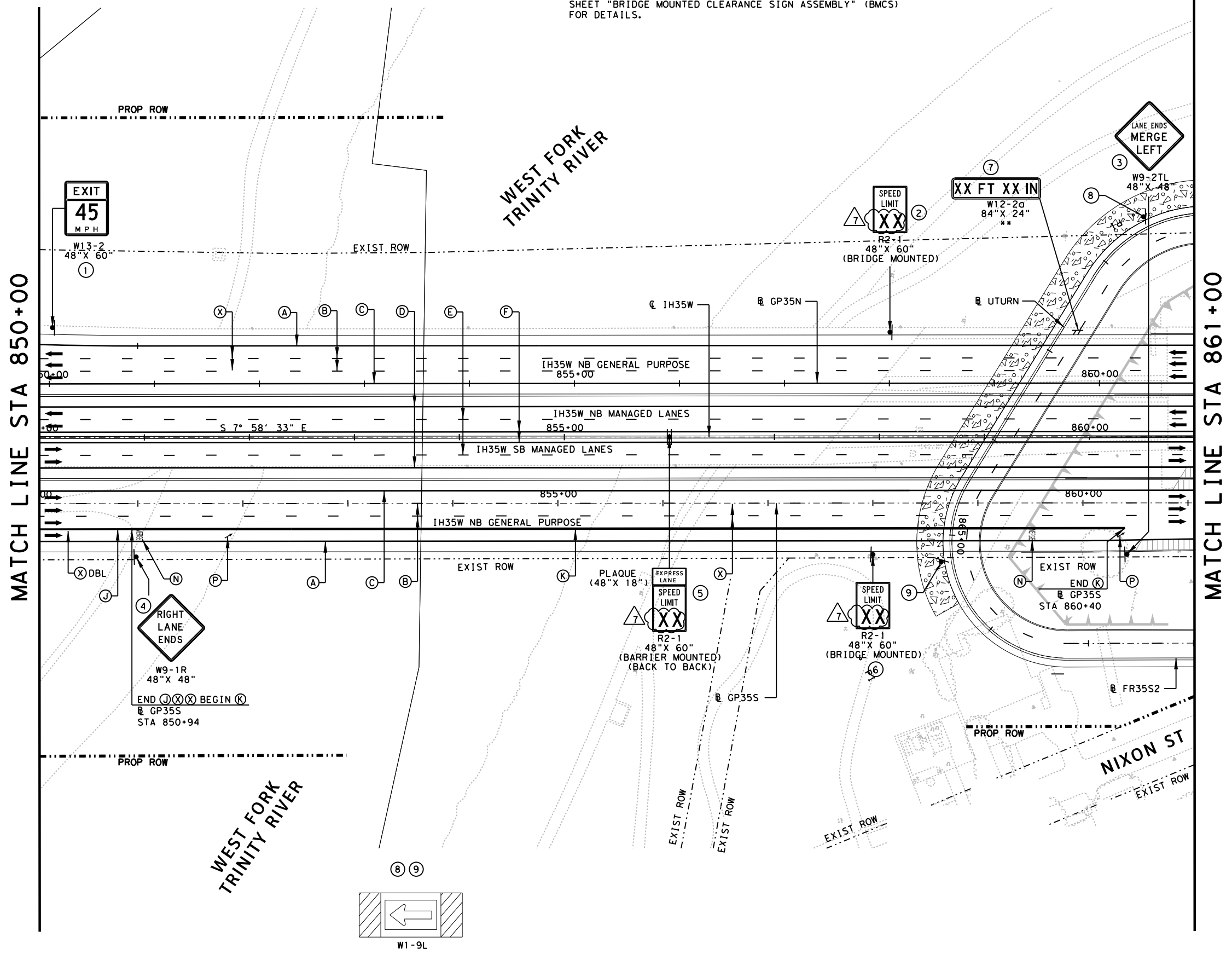
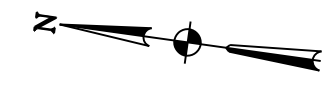
1 PROP COSS STR RS-848+00



c501f 10/11/2018 9:33:13 AM R:\GROUP05\IN HOUSE\Segment 3\Sign\Design Change Request\345-1477 TRA-SIGNS AND MARKINGS\CADD\TO TRANTIAS\TRA-PLSPW011.dgn

IFC REV	DATE	BY	DESCRIPTION
0	03/02/2015	ES	TRAFFIC OPS-SIGNS IFC
16	04/03/2017	TN	IFC NDC DCR-S-0753
32	03/07/2018	SSB	IFC NDC DCR-S-1186
34	05/02/2018	SSB	IFC NDC DCR-S-1268
44	10/11/2018	SSB	IFC NDC DCR-S-1477

\*\* SIGN CLEARANCE SHALL BE VERIFIED IN THE FIELD BY THE CONTRACTOR AND APPROVED BY THE ENGINEER PRIOR TO FABRICATION. SIGN WILL BE PAID FOR UNDER ITEM 0636-2001 "ALUMINUM SIGNS (TY A)", SIGN MOUNT WILL BE PAID FOR UNDER ITEM 0442-2047 "SIGN STL (MISCELLANEOUS BRIDGE)", AND IS SHOWN ON THE BRIDGE LAYOUTS. SEE STANDARD SHEET "BRIDGE MOUNTED CLEARANCE SIGN ASSEMBLY" (BMCS) FOR DETAILS.



**LEGEND**

- (A) REFL PAV MRK TY I (4") (W) (SLD)
- (B) REFL PAV MRK TY I (4") (W) (BRK)
- (C) REFL PAV MRK TY I (4") (Y) (SLD)
- (D) REFL PAV MRK TY I (6") (W) (SLD)
- (E) REFL PAV MRK TY I (6") (W) (BRK)
- (F) REFL PAV MRK TY I (6") (Y) (SLD)
- (G) REFL PAV MRK TY I (8") (W) (DOT)
- (H) REFL PAV MRK TY I (8") (W) (SLD)
- (J) REFL PAV MRK TY I (12") (W) (SLD)
- (K) REFL PAV MRK TY I (12") (W) (LNDR)
- (M) REFL PAV MRK TY I (24") (W) (SLD)
- (N) REFL PAV MRK TY I (W) (WORD)
- (P) REFL PAV MRK TY I (W) (ARROW)
- (Q) REFL PAV MRK TY I (W) (DBL ARROW)
- (S) REFL PAV MRK TY I (W) (ENTR GORE)
- (T) REFL PAV MRK TY I (W) (EXIT GORE)
- (W) REFL PAV MRK TY I (Y) (MED NOSE)
- (X) REFL PAV MRKR TY II C-R
- (Y) REFL PAV MARK TY II A-A
- ▼ YIELD TRIANGLE
- ||| RUMBLE STRIP
- # PROP LARGE SIGN
- ⊕ PROP SMALL SIGN

**NOTES:**

- CONTRACTOR TO INSTALL RUMBLE STRIP USING CONTINUOUS MILLED DEPRESSIONS, SEE TXDOT STANDARD "RS-10".
  - SEE TYPICAL SECTIONS FOR ADDITIONAL INFORMATION.
- NON-CLOUDED AREAS WILL BE THE RESPONSIBILITY OF THE ENGINEER OF RECORD, FOR THE RESPECTIVE CHANGES SHOWN IN PREVIOUS REVISIONS OF THIS SHEET.

REV. 7 ONLY

10/11/2018

© 2018 Texas Department of Transportation

north tarrant express | segments 3

north tarrant infrastructure, llc F-15700

**OTHON** CONSULTING ENGINEERS  
F-1471 HOUSTON · AUSTIN · DALLAS

**NORTH TARRANT EXPRESS - SEGMENT 3AS**  
Corridor - Traffic Operations  
**SIGNING & PAVEMENT MARKINGS LAYOUT**  
STA 850+00 TO STA 861+00

SCALE: 1" = 100' SHEET 11 OF 20

FED. RD. DIV. NO.	FEDERAL AID PROJECT NO.	SHEET NO.
6	IM 0355 (152)	TRA-78
STATE	DISTRICT	COUNTY
TEXAS	FT. WORTH	TARRANT
CONT	SECT	JOB
0014	16	179
		HIGHWAY NO
		IH35W