



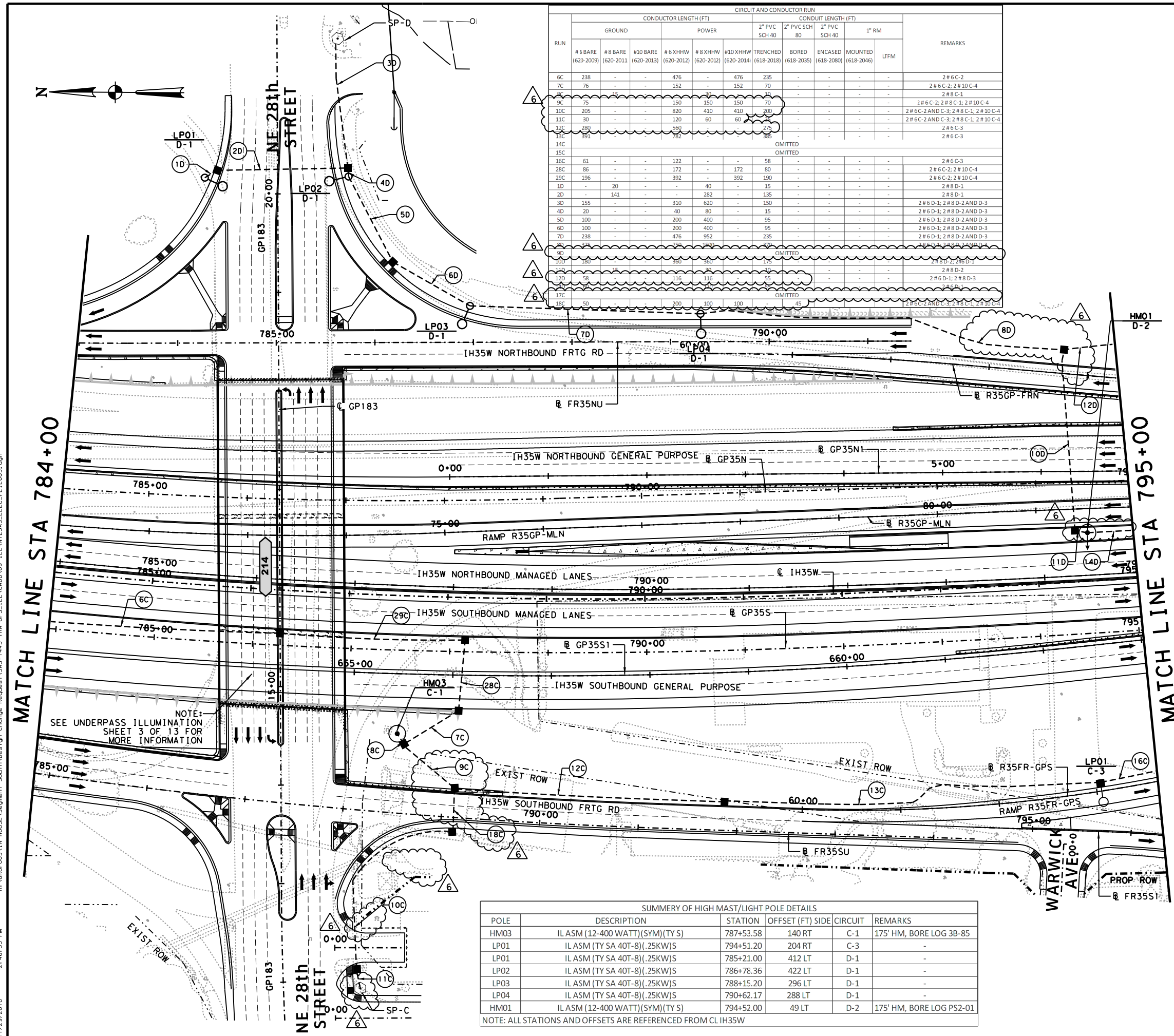
Highway Factors Attachment – Excerpts of illumination as-built plans on I-35W in the vicinity of the crash

Fort Worth, TX

HWY21FH005

(8 pages)

6501f 11/29/2018 2:46:55 PM R:\GROUP05\IN HOUSE\Segment South\Design Change Request\3AS-1445 TRA OPS-ILL\CA00\09 ILL\NTEAS-ELEC-PL\ILO05.dgn



RUN	CONDUCTOR LENGTH (FT)										REMARKS	
	GROUND					CONDUIT LENGTH (FT)						
	#6 BARE (620-2009)	#8 BARE (620-2011)	#10 BARE (620-2013)	#6 XHHW (620-2012)	#8 XHHW (620-2012)	#10 XHHW (620-2014)	TRENCHED (618-2018)	BORED (618-2035)	ENCASED (618-2080)	MOUNTED (618-2046)		1" RM
6C	238	-	-	476	-	476	235	-	-	-	-	2#6C-2
7C	76	-	-	152	-	152	70	-	-	-	-	2#6C-2; 2#10C-4
8C	75	-	-	150	-	150	70	-	-	-	-	2#8C-1
9C	75	-	-	150	-	150	70	-	-	-	-	2#6C-2; 2#8C-1; 2#10C-4
10C	205	-	-	820	-	410	410	200	-	-	-	2#6C-2 AND C-3; 2#8C-1; 2#10C-4
11C	30	-	-	120	-	60	60	30	-	-	-	2#6C-2 AND C-3; 2#8C-1; 2#10C-4
12C	280	-	-	560	-	280	275	-	-	-	-	2#6C-3
13C	391	-	-	782	-	385	385	-	-	-	-	2#6C-3
14C	-	-	-	-	-	-	-	-	-	-	-	OMITTED
15C	-	-	-	-	-	-	-	-	-	-	-	OMITTED
16C	61	-	-	122	-	58	-	-	-	-	-	2#6C-3
28C	86	-	-	172	-	80	-	-	-	-	-	2#6C-2; 2#10C-4
29C	196	-	-	392	-	190	-	-	-	-	-	2#6C-2; 2#10C-4
1D	-	20	-	40	-	15	-	-	-	-	-	2#8D-1
2D	-	141	-	282	-	135	-	-	-	-	-	2#8D-1
3D	155	-	-	310	-	150	-	-	-	-	-	2#6D-1; 2#8D-2 AND D-3
4D	20	-	-	40	-	15	-	-	-	-	-	2#6D-1; 2#8D-2 AND D-3
5D	100	-	-	200	-	95	-	-	-	-	-	2#6D-1; 2#8D-2 AND D-3
6D	100	-	-	200	-	95	-	-	-	-	-	2#6D-1; 2#8D-2 AND D-3
7D	238	-	-	476	-	235	-	-	-	-	-	2#6D-1; 2#8D-2 AND D-3
8D	325	-	-	650	-	325	-	-	-	-	-	2#6D-1; 2#8D-2 AND D-3
9D	325	-	-	650	-	325	-	-	-	-	-	OMITTED
10D	325	-	-	650	-	325	-	-	-	-	-	OMITTED
11D	58	-	-	116	-	55	-	-	-	-	-	2#8D-2
12D	58	-	-	116	-	55	-	-	-	-	-	2#6D-1; 2#8D-3
17C	-	-	-	-	-	-	-	-	-	-	-	OMITTED
18C	50	-	-	100	-	45	-	-	-	-	-	2#6C-2 AND C-3; 2#8C-1; 2#10C-4

IFC REV	DATE	BY	DESCRIPTION
0	12/24/2014	JPT	TRAFFIC OPS - ILLUMINATION IFC
6	3/07/2016	FS	IFC NDC DCR-S-0516
21	4/09/2017	FS	IFC NDC DCR-S-1030
23	5/12/2017	FS	IFC NDC DCR-S-1114
33	6/11/2018	FS	IFC NDC DCR-S-1445

LEGEND

- HIGH MAST POLE (USED ONLY ON SYMMETRICAL FIXTURES)
- ➔ HIGH MAST POLE WITH FIXTURE ORIENTATION ARROW (USED ONLY ON ASYMMETRICAL FIXTURES)
- ⊠ EXISTING HIGH MAST POLE TO REMAIN
- ▲ UNDERPASS LIGHT FIXTURE (BEAM MOUNTED)
- ⊕ 240/480V ELECTRICAL SERVICE POLE
- GROUND BOX (BELOW GRADE) (TYPE D W/ APRON)
- ⊠ JUNCTION BOX (ABOVE GRADE)
- ⊙ ELECTRICAL POWER SOURCE
- 2" PVC SCH. 40 OR AS NOTED
- 2" PVC SCH. 80 BORED OR AS NOTED
- RMC OR FLEX CONDUIT, SIZE AS NOTED
- NEMA 3R, 30A DISCONNECT W/20 AMP FUSE
- ⊙(X) CONDUIT RUN #(#), SERVICE #(#)
- X Y-Z ILL #(#)/ SERVICE #(#)- CIRCUIT #(#)
- RDWY ILL ASSEM (TY SA 40T-8) (.25KW)S
- RDWY ILL ASSEM (TY SA 40S-8) (.25KW)S
- RDWY ILL ASSEM (TY SA 50T-8) (.4KW)S
- RDWY ILL ASSEM (TY SA 50S-8) (.4KW)S
- RDWY ILL ASSEM (TY SP 48S-8) (.4KW)S
- RDWY ILL ASSEM (TY SP 48S-8-8) (.4KW)S
- RDWY ILL ASSEM (TY SA 50S-8-8) (.4KW)S
- ⊠ EXISTING RDWY ILL ASSEM TO REMAIN

NON-CLOUDED AREAS WILL BE THE RESPONSIBILITY OF THE ENGINEER OF RECORD, FOR THE RESPECTIVE CHANGES SHOWN IN PREVIOUS REVISIONS OF THIS SHEET.

REV. 6 ONLY

11/29/2018
GLOBAL CIVIL SOLUTIONS
FIRM REG# F-12801

Texas Department of Transportation

north tarrant express | segments 3

north tarrant infrastructure, llc F-15700

OTHON CONSULTING ENGINEERS
F-1471 HOUSTON · AUSTIN · DALLAS

NORTH TARRANT EXPRESS - SEGMENT 3AS
Traffic Operations - Illumination

ILLUMINATION LAYOUT
STA 784+00 TO STA 795+00

SCALE: 1" = 100' SHEET 5 OF 25

FED. RD. DIV. NO.	FEDERAL AID PROJECT NO.	SHEET NO.
6	IM 0355 (152)	ILL-05
STATE	DISTRICT	COUNTY
TEXAS	FT. WORTH	TARRANT
CONT	SECT	JOB
0014	16	179
		HIGHWAY NO
		IH35W

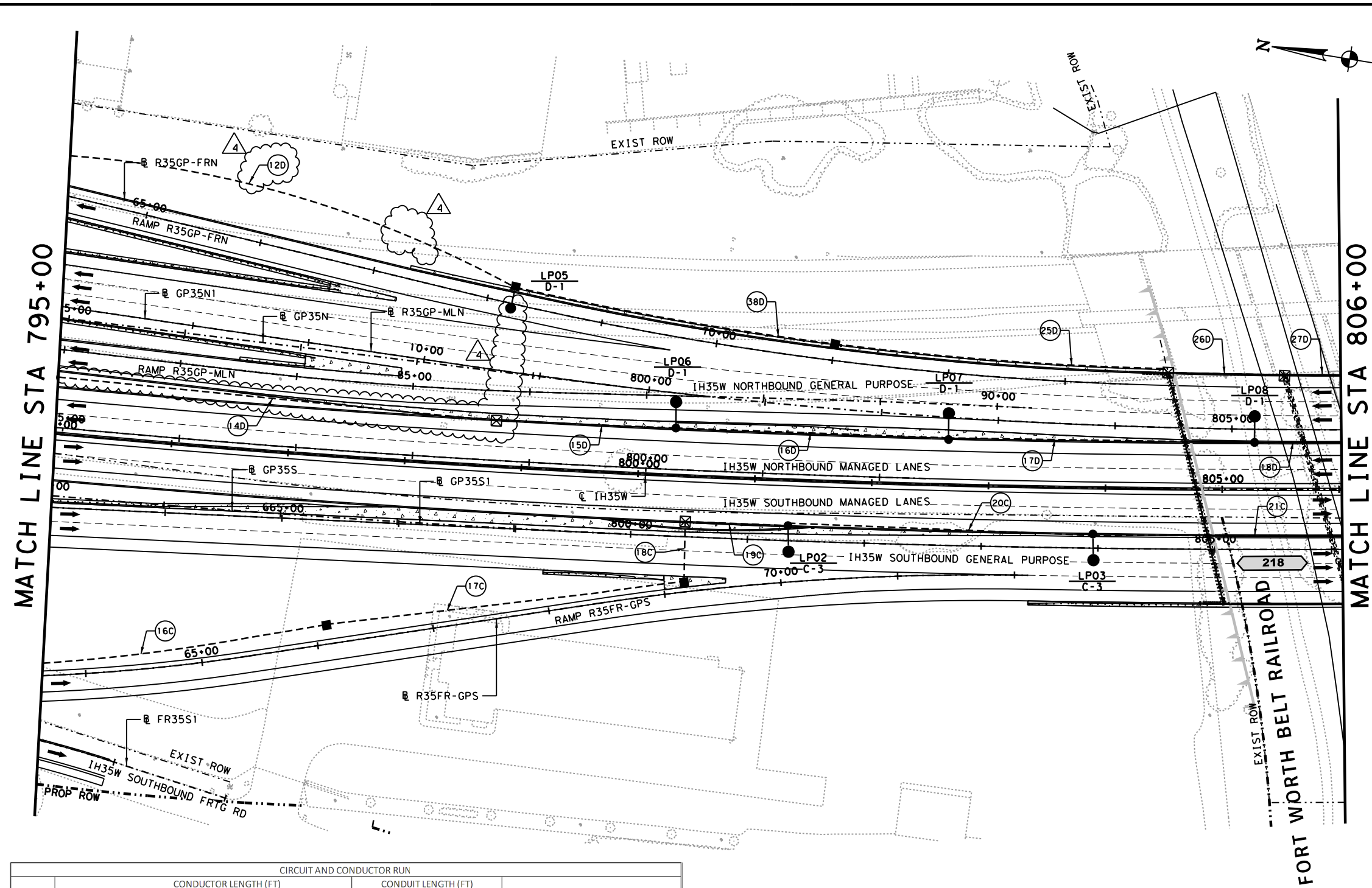
POLE	DESCRIPTION	STATION	OFFSET (FT)	SIDE	CIRCUIT	REMARKS
HMO3	IL ASM (12-400 WATT)(SYM)(TY S)	787+53.58	140	RT	C-1	175' HM, BORE LOG 3B-85
LP01	IL ASM (TY SA 40T-8)(.25KW)S	794+51.20	204	RT	C-3	-
LP01	IL ASM (TY SA 40T-8)(.25KW)S	785+21.00	412	LT	D-1	-
LP02	IL ASM (TY SA 40T-8)(.25KW)S	786+78.36	422	LT	D-1	-
LP03	IL ASM (TY SA 40T-8)(.25KW)S	788+15.20	296	LT	D-1	-
LP04	IL ASM (TY SA 40T-8)(.25KW)S	790+62.17	288	LT	D-1	-
HMO1	IL ASM (12-400 WATT)(SYM)(TY S)	794+52.00	49	LT	D-2	175' HM, BORE LOG PS2-01

NOTE: ALL STATIONS AND OFFSETS ARE REFERENCED FROM CL IH35W

IFC REV	DATE	BY	DESCRIPTION
0	12/24/2014	JPT	TRAFFIC OPS - ILLUMINATION IFC
1	05/04/2015	JPT	IFC NDC S-035
2	07/01/2015	JPT	IFC NDC S-060
23	12/12/2017	FS	IFC NDC DCR-S-1114
33	11/29/2018	FS	IFC NDC DCR-S-1445

LEGEND

- HIGH MAST POLE (USED ONLY ON SYMMETRICAL FIXTURES)
- ➔ HIGH MAST POLE WITH FIXTURE ORIENTATION ARROW (USED ONLY ON ASYMMETRICAL FIXTURES)
- ⊠ EXISTING HIGH MAST POLE TO REMAIN
- ⬆ UNDERPASS LIGHT FIXTURE (BEAM MOUNTED)
- ⊕ 240/480V ELECTRICAL SERVICE POLE
- GROUND BOX (BELOW GRADE) (TYPE D W/ APRON)
- ⊠ JUNCTION BOX (ABOVE GRADE)
- ⊕ ELECTRICAL POWER SOURCE
- - - 2" PVC SCH. 40 OR AS NOTED
- - - 2" PVC SCH. 80 BORED OR AS NOTED
- - - RMC OR FLEX CONDUIT. SIZE AS NOTED
- ⊠ NEMA 3R, 30A DISCONNECT W/20 AMP FUSE
- ⊠#X CONDUIT RUN #(#), SERVICE #(X)
- X Y-Z ILL #(X)/ SERVICE #(Y) - CIRCUIT #(Z)
- RDWY ILL ASSEM (TY SA 40T-8) (.25KW)S
- RDWY ILL ASSEM (TY SA 40S-8) (.25KW)S
- RDWY ILL ASSEM (TY SA 50T-8) (.4KW)S
- RDWY ILL ASSEM (TY SA 50S-8) (.4KW)S
- RDWY ILL ASSEM (TY SP 48S-8) (.4KW)S
- RDWY ILL ASSEM (TY SP 48S-8-8) (.4KW)S
- RDWY ILL ASSEM (TY SA 50S-8-8) (.4KW)S
- ⊠ EXISTING RDWY ILL ASSEM TO REMAIN



NON-CLOUDED AREAS WILL BE THE RESPONSIBILITY OF THE ENGINEER OF RECORD, FOR THE RESPECTIVE CHANGES SHOWN IN PREVIOUS REVISIONS OF THIS SHEET.

REV. 4 ONLY

©2018 Texas Department of Transportation

north tarrant
express | segments 3

north tarrant
infrastructure, llc F-15700

OTHON
CONSULTING ENGINEERS
F-1471 HOUSTON · AUSTIN · DALLAS

NORTH TARRANT EXPRESS - SEGMENT 3AS
Traffic Operations - Illumination

ILLUMINATION LAYOUT
STA 795+00 TO STA 806+00

SCALE: 1" = 100' SHEET 6 OF 25

FED. RD. DIV. NO.	FEDERAL AID PROJECT NO.	SHEET NO.
6	IM 0355 (152)	ILL-06
STATE	DISTRICT	COUNTY
TEXAS	FT. WORTH	TARRANT
CONT	SECT	JOB
0014	16	179
		HIGHWAY NO
		IH35W

RUN	CIRCUIT AND CONDUCTOR RUN										REMARKS
	CONDUCTOR LENGTH (FT)						CONDUIT LENGTH (FT)				
	GROUND		POWER				2" PVC SCH 40	2" PVC SCH 80	2" PVC SCH 40		
# 6 BARE (620-2009)	# 8 BARE (620-2011)	# 10 BARE (620-2013)	# 6 XHHW (520-2012)	# 8 XHHW (620-2012)	# 10 XHHW (620-2014)	TRENCHED (618-2018)	BORED (618-2035)	ENCASED (618-2080)			
16C	253	-	-	506	-	-	250	-	-	-	2 # 6 C-3
17C	316	-	-	632	-	-	310	-	-	-	2 # 6 C-3
18C	60	-	-	120	-	-	55	-	-	-	2 # 8 C-3
19C	95	-	-	186	-	-	-	-	90	-	CONDUIT ENCASED IN CTB; 2#6 C-3
20C	-	268	-	-	536	-	-	-	265	-	CONDUIT ENCASED IN CTB; 2#6 C-3
21C	-	215	-	-	432	-	-	-	213	-	CONDUIT ENCASED IN CTB; 2#6 C-3
12D	405	-	-	810	810	-	-	-	400	-	2 # 6 D-1; 2 # 8 D-3
13D	-	-	-	-	-	-	-	-	-	-	OMITTED
14D	385	-	-	770	-	-	-	-	380	-	2 # 8 D-1
15D	-	160	-	-	320	-	-	-	155	-	CONDUIT ENCASED IN CTB; 2 # 8 D-1
16D	-	238	-	-	476	-	-	-	235	-	CONDUIT ENCASED IN CTB; 2 # 8 D-1
17D	-	268	-	-	536	-	-	-	265	-	CONDUIT ENCASED IN CTB; 2 # 8 D-1
18D	-	76	-	-	152	-	-	-	74	-	CONDUIT ENCASED IN CTB; 2 # 8 D-1
38D	-	291	-	-	582	-	-	-	285	-	2 # 8 D-3
25D	-	291	-	-	582	-	-	-	285	-	2 # 8 D-3
26D	-	105	-	-	210	-	-	-	100	-	CONDUIT ENCASED IN CTB; 2 # 8 D-3
27D	-	-	50	-	-	100	-	-	50	-	CONDUIT ENCASED IN CTB; 2 # 10 D-3

SUMMARY OF HIGH MAST/LIGHT POLE DETAILS						
POLE	DESCRIPTION	STATION	OFFSET (FT)	SIDE	CIRCUIT	REMARKS
LP02	IL ASM (TY SA 48S-8) (.4KW)S	801+29.76	40	RT	C-3	-
LP03	IL ASM (TY SA 48S-8) (.4KW)S	803+89.74	40	RT	C-3	-
LP05	IL ASM (TY SA 50T-8) (.4KW)S	798+86.34	154	LT	D-1	-
LP06	IL ASM (TY SA 48S-8) (.4KW)S	800+30.87	40	LT	D-1	-
LP07	IL ASM (TY SA 48S-8) (.4KW)S	802+65.09	40	LT	D-1	-
LP08	IL ASM (TY SA 48S-8) (.4KW)S	805+26.89	40	LT	D-1	-

NOTE: ALL STATIONS AND OFFSETS ARE REFERENCED FROM CL IH35W

c501f 11/29/2018 2:48:58 PM R:\GROUP05\IN HOUSE\Segment South\Design Change Request\3AS-1445 TRA OPS-ILL\CA00\09 ILL\NTE\3AS-ELEC_PL\I006.dgn

R:\GROUP05\IN HOUSE\Segment South\Design Change Request\3AS-1445 TRA OPS-ILL\CA00\09 ILL\NTE\3AS-ELEC_PL\I006.dgn

IFC REV	DATE	BY	DESCRIPTION
0	12/24/2014	JPT	TRAFFIC OPS - ILLUMINATION IFC
1	05/04/2015	JPT	IFC NDC S-035
2	07/01/2015	JPT	IFC NDC S-060
8	10/12/2016	FS	IFC NDC DCR-S-0639

LEGEND

- HIGH MAST POLE (USED ONLY ON SYMMETRICAL FIXTURES)
- HIGH MAST POLE WITH FIXTURE ORIENTATION ARROW (USED ONLY ON ASYMMETRICAL FIXTURES)
- EXISTING HIGH MAST POLE TO REMAIN
- UNDERPASS LIGHT FIXTURE (BEAM MOUNTED)
- 240/480V ELECTRICAL SERVICE POLE
- GROUND BOX (BELOW GRADE) (TYPE D W/ APRON)
- JUNCTION BOX (ABOVE GRADE)
- ELECTRICAL POWER SOURCE
- 2" PVC SCH. 40 OR AS NOTED
- 2" PVC SCH. 80 BORED OR AS NOTED
- RMC OR FLEX CONDUIT. SIZE AS NOTED
- NEMA 3R, 30A DISCONNECT W/20 AMP FUSE
- CONDUIT RUN #(#), SERVICE #(#)
- ILL #(#)/ SERVICE #(#)- CIRCUIT #(#)
- RDWY ILL ASSEM (TY SA 40T-8) (.25KW)S
- RDWY ILL ASSEM (TY SA 40S-8) (.25KW)S
- RDWY ILL ASSEM (TY SA 50T-8) (.4KW)S
- RDWY ILL ASSEM (TY SA 50S-8) (.4KW)S
- RDWY ILL ASSEM (TY SP 48S-8) (.4KW)S
- RDWY ILL ASSEM (TY SP 48S-8-8) (.4KW)S
- RDWY ILL ASSEM (TY SA 50S-8-8) (.4KW)S
- EXISTING RDWY ILL ASSEM TO REMAIN
- RDWY ILL ASSEM (TY SP 38S-8) (.25KW)S

NON-CLOUDED AREAS WILL BE THE RESPONSIBILITY OF THE ENGINEER OF RECORD, FOR THE RESPECTIVE CHANGES SHOWN IN PREVIOUS REVISIONS OF THIS SHEET.

REVISED AS NOTED

FOR REV. 3 ONLY

FIROZE SHAMS
97215
LICENSED PROFESSIONAL ENGINEER
10/12/2016
GLOBAL CIVIL SOLUTIONS
FIRM REG# F-12801

©2016 Texas Department of Transportation

north tarrant
express | segments 3

north tarrant
infrastructure, llc F-15700

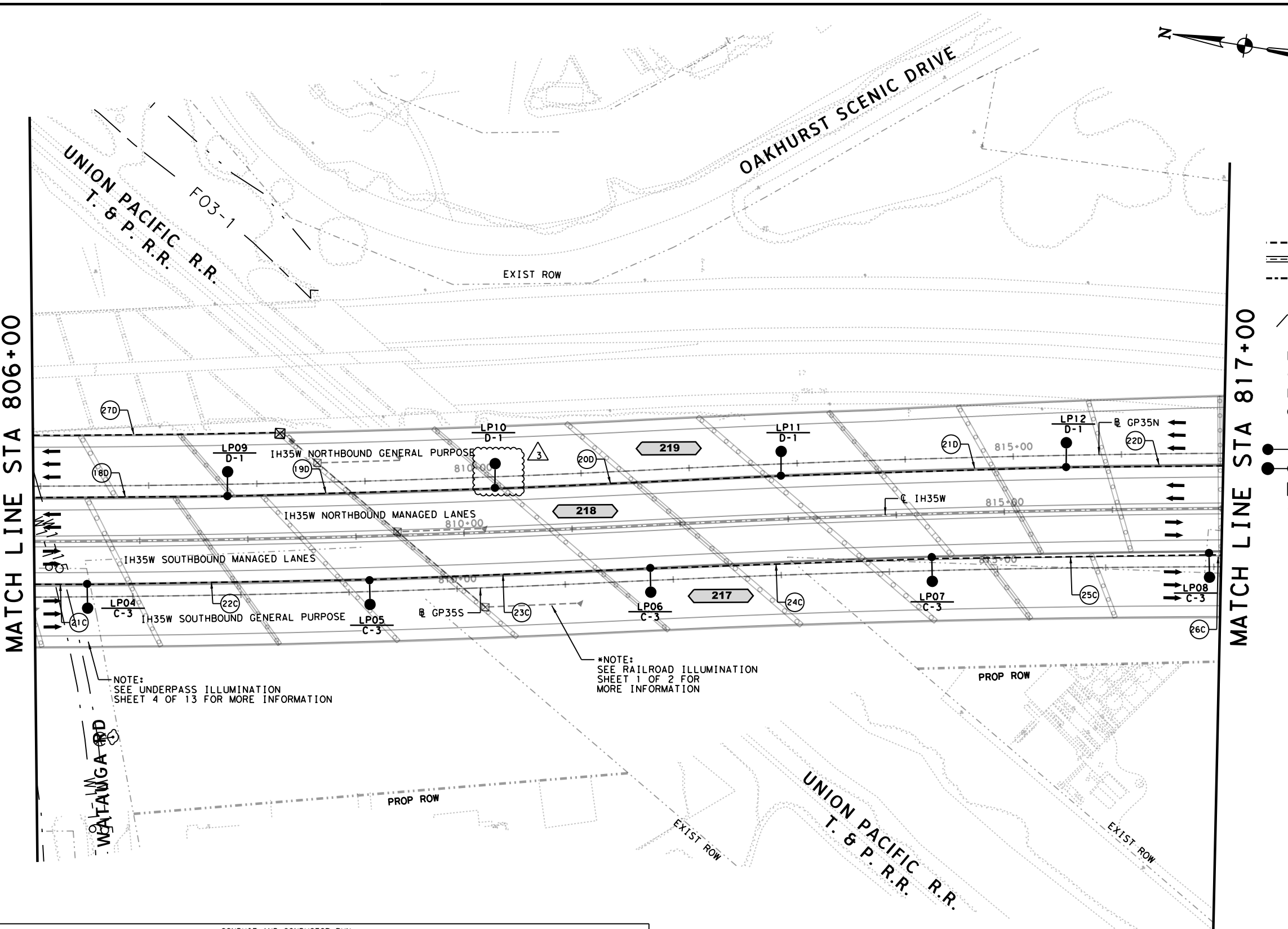
OTHON
CONSULTING ENGINEERS
F-1471 HOUSTON · AUSTIN · DALLAS

NORTH TARRANT EXPRESS - SEGMENT 3AS
Traffic Operations - Illumination

ILLUMINATION LAYOUT
STA 806+00 TO STA 817+00

SCALE: 1" = 100' SHEET 7 OF 25

FED. DIV. NO.	FEDERAL AID PROJECT NO.	SHEET NO.
6	IM 0355 (152)	ILL-07
STATE	DISTRICT	COUNTY
TEXAS	FT. WORTH	TARRANT
CONT	SECT	JOB
0014	16	179
		HIGHWAY NO
		IH35W



NOTE: SEE UNDERPASS ILLUMINATION SHEET 4 OF 13 FOR MORE INFORMATION

*NOTE: SEE RAILROAD ILLUMINATION SHEET 1 OF 2 FOR MORE INFORMATION

RUN	CONDUIT AND CONDUCTOR RUN										REMARKS
	CONDUIT LENGTH (FT)					CONDUIT LENGTH (FT)					
	GROUND		POWER			2" PVC SCH 40	2" PVC SCH 80	2" PVC SCH 40	MOUNTED	1" RM	
21C	54	-	108	-	-	-	52	-	-	-	CONDUIT ENCASED IN CTB; 2#8 C-3
22C	268	-	536	-	-	-	265	-	-	-	CONDUIT ENCASED IN CTB; 2#8 C-3
23C	268	-	536	-	-	-	265	-	-	-	CONDUIT ENCASED IN CTB; 2#8 C-3
24C	268	-	536	-	-	-	265	-	-	-	CONDUIT ENCASED IN CTB; 2#8 C-3
25C	263	-	526	-	-	-	260	-	-	-	CONDUIT ENCASED IN CTB; 2#8 C-3
26C	13	-	26	-	-	-	11	-	-	-	CONDUIT ENCASED IN CTB; 2#8 C-3
18D	183	-	366	-	-	-	181	-	-	-	CONDUIT ENCASED IN CTB; 2#8 D-1
19D	255	-	510	-	-	-	250	-	-	-	CONDUIT ENCASED IN CTB; 2#8 D-1
20D	275	-	550	-	-	-	270	-	-	-	CONDUIT ENCASED IN CTB; 2#8 D-1
21D	268	-	536	-	-	-	265	-	-	-	CONDUIT ENCASED IN CTB; 2#8 D-1
22D	147	-	294	-	-	-	145	-	-	-	CONDUIT ENCASED IN CTB; 2#8 D-1
27D	-	232	-	464	-	-	230	-	-	-	CONDUIT ENCASED IN CTB; 2#10 D-3

SUMMARY OF HIGH MAST/LIGHT POLE DETAILS						
POLE	DESCRIPTION	STATION	OFFSET (FT)	SIDE	CIRCUIT	REMARKS
LP04	IL ASM (TY SP 48S-8) (.4KW)S	806+49.12	40	RT	C-3	-
LP05	IL ASM (TY SP 48S-8) (.4KW)S	809+11.60	40	RT	C-3	-
LP06	IL ASM (TY SP 48S-8) (.4KW)S	811+70.84	40	RT	C-3	-
LP07	IL ASM (TY SP 48S-8) (.4KW)S	814+31.78	40	RT	C-3	-
LP08	IL ASM (TY SP 48S-8) (.4KW)S	816+89.19	40	RT	C-3	-
LP09	IL ASM (TY SP 48S-8) (.4KW)S	807+82.07	40	LT	D-1	-
LP10	IL ASM (TY SP 48S-8) (.4KW)S	810+30.00	40	LT	D-1	-
LP11	IL ASM (TY SP 48S-8) (.4KW)S	812+95.23	40	LT	D-1	-
LP12	IL ASM (TY SP 48S-8) (.4KW)S	815+58.20	40	LT	D-1	-

NOTE: ALL STATIONS AND OFFSETS ARE REFERENCED FROM CL IH35W

R:\GROUP05\IN HOUSE\Segment 3\AS-0639\CADD\09 ILL\NTE3AS-ELC-PL1L007.dgn 10/12/2016 4:54:42 PM

R:\GROUP05\IN HOUSE\Segment 3\AS-0639\CADD\09 ILL\NTE3AS-ELC-PL1L007.dgn 10/12/2016 4:54:42 PM

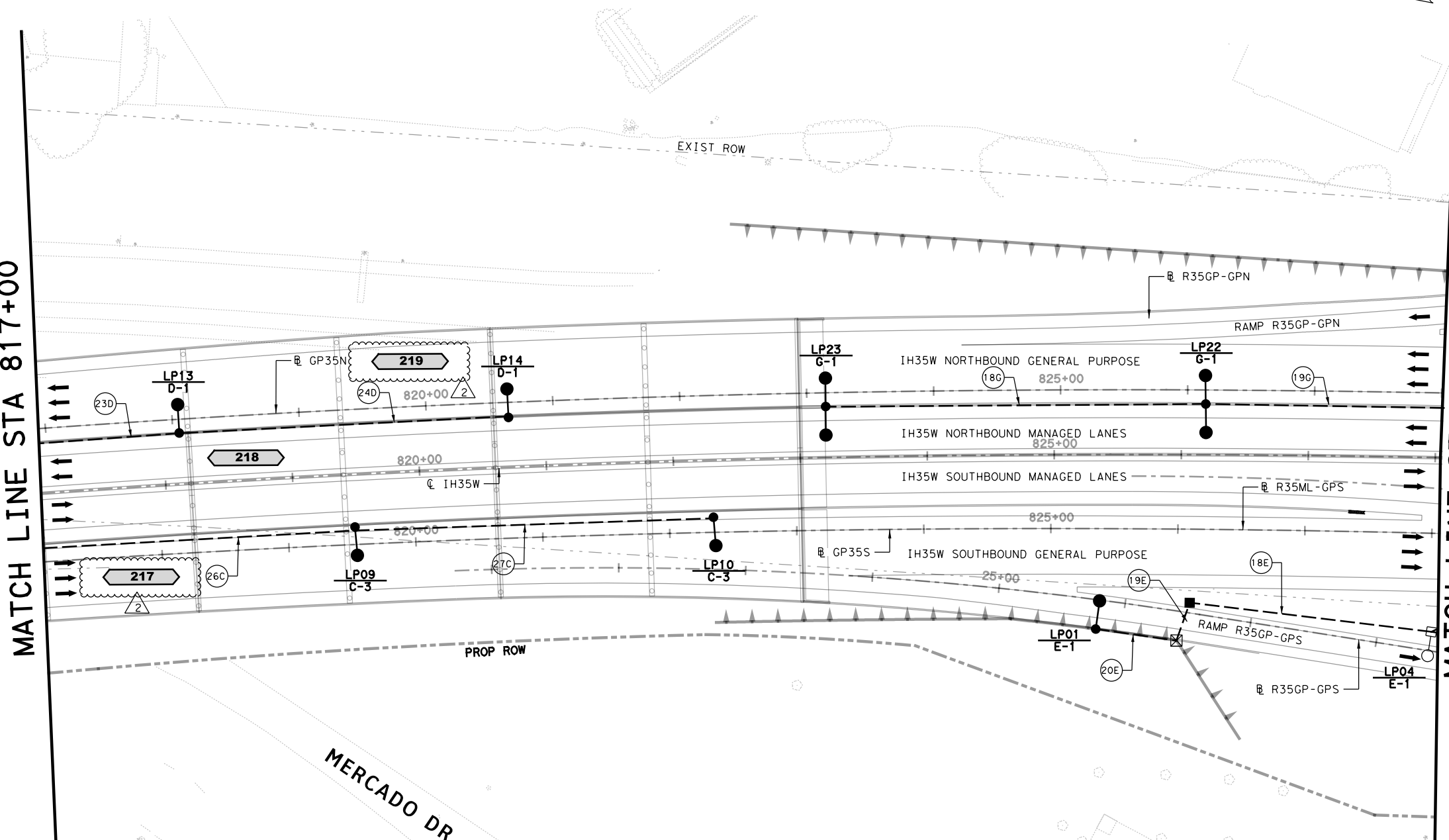
IFC REV	DATE	BY	DESCRIPTION
0	12/24/2014	JPT	TRAFFIC OPS - ILLUMINATION IFC
1	05/04/2015	JPT	IFC NDC S-035
2	07/01/2015	JPT	IFC NDC S-060

LEGEND

- HIGH MAST POLE (USED ONLY ON SYMMETRICAL FIXTURES)
- ➔ HIGH MAST POLE WITH FIXTURE ORIENTATION ARROW (USED ONLY ON ASYMMETRICAL FIXTURES)
- ⊠ EXISTING HIGH MAST POLE TO REMAIN
- ▲ UNDERPASS LIGHT FIXTURE (BEAM MOUNTED)
- ⊙ 240/480V ELECTRICAL SERVICE POLE
- GROUND BOX (BELOW GRADE) (TYPE D W/ APRON)
- ⊠ JUNCTION BOX (ABOVE GRADE)
- ⊙ ELECTRICAL POWER SOURCE
- 2" PVC SCH. 40 OR AS NOTED
- === 2" PVC SCH. 80 BORED OR AS NOTED
- - - RMC OR FLEX CONDUIT. SIZE AS NOTED
- NEMA 3R, 30A DISCONNECT W/20 AMP FUSE
- ⊕ CONDUIT RUN #(#), SERVICE #(#)
- X
Y-Z ILL # (X) / SERVICE # (Y) - CIRCUIT # (Z)
- RDWY ILL ASSEM (TY SA 40T-8) (.25KW) S
- RDWY ILL ASSEM (TY SA 40S-8) (.25KW) S
- RDWY ILL ASSEM (TY SA 50T-8) (.4KW) S
- RDWY ILL ASSEM (TY SA 50S-8) (.4KW) S
- RDWY ILL ASSEM (TY SP 48S-8) (.4KW) S
- RDWY ILL ASSEM (TY SP 48S-8-8) (.4KW) S
- RDWY ILL ASSEM (TY SA 50S-8-8) (.4KW) S
- ⊠ EXISTING RDWY ILL ASSEM TO REMAIN

MATCH LINE STA 817+00

MATCH LINE STA 828+00



⚠ UPDATED CONDUIT & LIGHT POLE TABLES, ADDED BRIDGE LABELS



©2015 Texas Department of Transportation

north tarrant
express | segments 3

north tarrant
infrastructure, llc

OTHON
CONSULTING ENGINEERS

F-1471 HOUSTON · AUSTIN · DALLAS

NORTH TARRANT EXPRESS - SEGMENT 3AS
Traffic Operations - Illumination

ILLUMINATION LAYOUT

STA 817+00 TO STA 828+00

SCALE: 1" = 100' SHEET 8 OF 25

FED. RD. DIV. NO.	FEDERAL AID PROJECT NO.	SHEET NO.
6	IM 0355 (152)	ILL-08
STATE	DISTRICT	COUNTY
TEXAS	FT. WORTH	TARRANT
CONT	SECT	JOB
0014	16	179
		HIGHWAY NO
		IH35W

POLE	DESCRIPTION	STATION	OFFSET (FT)	SIDE	CIRCUIT	REMARKS
LP09	IL ASM (TY SP 48S-8) (.4KW) S	819+47.37	40	RT	C-3	-
LP10	IL ASM (TY SP 48S-8) (.4KW) S	822+30.63	40	RT	C-3	-
LP13	IL ASM (TY SP 48S-8) (.4KW) S	818+13.20	40	LT	D-1	-
LP14	IL ASM (TY SP 48S-8) (.4KW) S	820+72.06	40	LT	D-1	-
LP01	IL ASM (TY SP 48S-8) (.4KW) S	825+32.71	137	RT	E-1	-
LP04	IL ASM (TY SA 40T-8) (.25KW) S	828+00.00	140	RT	E-1	-
LP23	IL ASM (TY SP 48S-8-8) (.4KW) S	823+20.78	40	LT	G-1	-
LP22	IL ASM (TY SP 48S-8-8) (.4KW) S	826+19.07	40	LT	G-1	-

NOTE: ALL STATIONS AND OFFSETS ARE REFERENCED FROM CL IH35W

RUN	CONDUIT LENGTH (FT)										REMARKS	
	GROUND					CONDUIT LENGTH (FT)						
	#6 BARE (620-2009)	#8 BARE (620-2011)	#10 BARE (620-2013)	#6 XHHW (620-2010)	#8 XHHW (620-2012)	#10 XHHW (620-2014)	2" PVC SCH 40 TRENCHED (618-2018)	2" PVC SCH 80 BORED (618-2035)	2" PVC SCH 40 ENCASED (618-2080)	1" RM MOUNTED (618-2046)		LTFM
26C	-	251	-	-	502	-	-	249	-	-	-	CONDUIT ENCASED IN CTB; 2#8 C-3
27C	-	288	-	-	576	-	-	285	-	-	-	CONDUIT ENCASED IN CTB; 2#8 C-3
23D	-	117	-	-	234	-	-	115	-	-	-	CONDUIT ENCASED IN CTB; 2#8 D-1
24D	-	268	-	-	536	-	-	265	-	-	-	CONDUIT ENCASED IN CTB; 2#8 D-1
18E	-	201	-	-	402	-	195	-	-	-	-	2#8 E-1
19E	-	41	-	-	82	-	35	-	-	-	-	2#8 E-1
20E	-	81	-	-	162	-	-	75	-	-	-	CONDUIT ENCASED IN CTB; 2#8 E-1
18G	-	303	-	-	606	-	-	300	-	-	-	CONDUIT ENCASED IN CTB; 2#8 G-1
19G	-	380	-	-	760	-	-	380	-	-	-	CONDUIT ENCASED IN CTB; 2#8 G-1

c:\naeers\j\raeder\obsktop\pco\fact w\lsp\m06426\NTE3AS_ELEC_PL_ILL008.dgn 07/06/2015 10:30:53 AM

SUMMARY OF HIGH MAST/LIGHT POLE DETAILS						
POLE	DESCRIPTION	STATION	OFFSET (FT)	SIDE	CIRCUIT	REMARKS
LP02	IL ASM (TY SA 50T-8) (.4KW)S	828+41.42	116	RT	E-1	-
LP03	IL ASM (TY SA 50T-8) (.4KW)S	831+31.56	119	RT	E-1	-
LP05	IL ASM (TY SA 40T-8) (.25KW)S	830+40.45	169	RT	E-1	-
LP06	IL ASM (TY SA 40T-8) (.25KW)S	832+76.20	189	RT	E-1	-
LP07	IL ASM (TY SA 40S-8) (.25KW)S	833+24.41	405	RT	E-1	-
LP08	IL ASM (TY SA 40S-8) (.25KW)S	833+94.33	478	RT	E-1	-
LP09	IL ASM (TY SA 50S-8-8) (.4KW)S	834+74.42	268	RT	E-1	-
LP10	IL ASM (TY SA 40S-8) (.25KW)S	837+38.49	216	RT	E-1	-
LP13	IL ASM (TY SP 48S-8) (.4KW)S	834+71.41	40	RT	E-1	-
LP14	IL ASM (TY SP 48S-8) (.4KW)S	836+86.45	40	RT	E-1	-
LP01	IL ASM (TY SA 40T-8) (.25KW)S	829+73.75	109	LT	G-2	-
LP02	IL ASM (TY SP 38S-8) (.25KW)S	831+67.36	168	LT	G-2	-
LP03	IL ASM (TY SP 38S-8) (.25KW)S	833+93.04	185	LT	G-2	-
LP04	IL ASM (TY SP 38S-8) (.25KW)S	836+25.75	195	LT	G-2	-
LP05	IL ASM (TY SA 50S-8-8) (.4KW)S	838+60.63	235	LT	G-1	-
LP21	IL ASM (TY SP 48S-8) (.4KW)S	828+83.07	40	LT	G-1	-
LP20	IL ASM (TY SP 48S-8) (.4KW)S	831+14.72	40	LT	G-1	-
LP19	IL ASM (TY SP 48S-8) (.4KW)S	833+27.41	40	LT	G-1	-
LP18	IL ASM (TY SP 48S-8) (.4KW)S	835+57.48	40	LT	G-1	-
LP17	IL ASM (TY SP 48S-8) (.4KW)S	838+20.14	40	LT	G-1	-

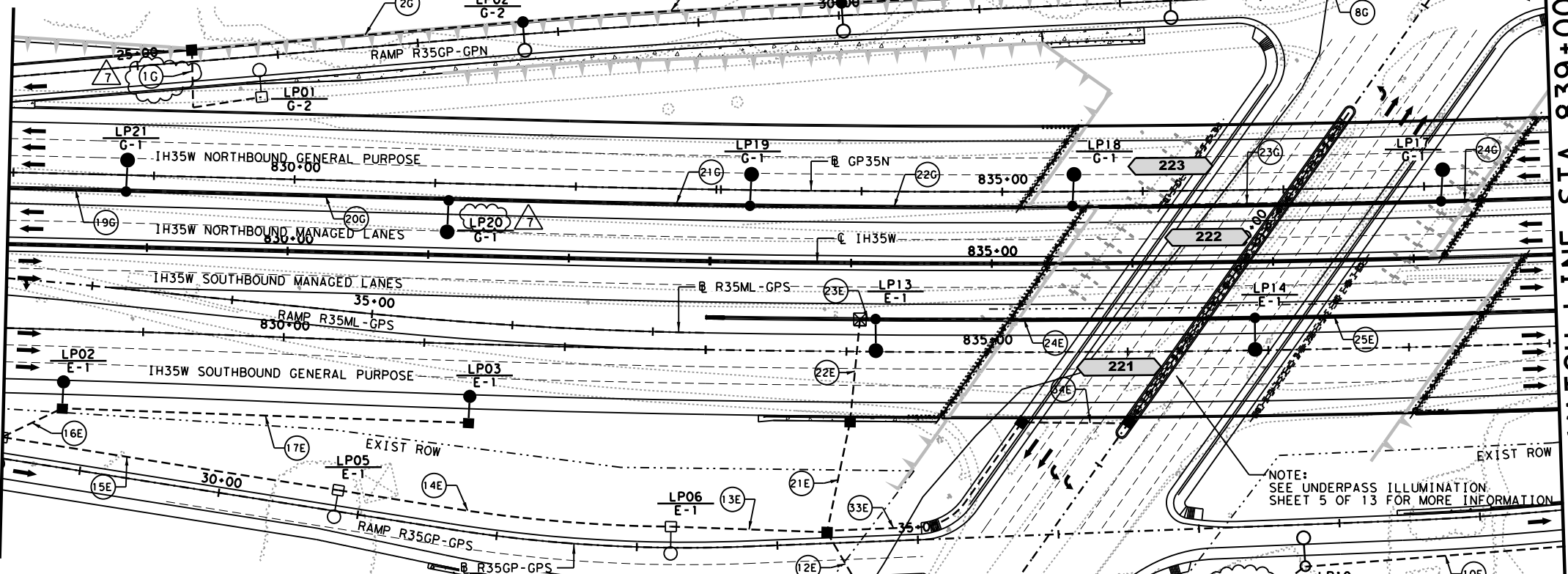
NOTE: ALL STATIONS AND OFFSETS ARE REFERENCED FROM CL IH35W

IFC REV	DATE	BY	DESCRIPTION
0	12/24/2014	JPT	TRAFFIC OPS - ILLUMINATION IFC
6	4/07/2016	FS	IFC NDC DCR-5-0516
14	5/04/2017	FS	IFC NDC DCR-5-0880
19	6/08/2017	FS	IFC NDC DCR-5-1033
33	7/11/2018	FS	IFC NDC DCR-5-1445

- LEGEND**
- HIGH MAST POLE (USED ONLY ON SYMMETRICAL FIXTURES)
 - HIGH MAST POLE WITH FIXTURE ORIENTATION ARROW (USED ONLY ON ASYMMETRICAL FIXTURES)
 - EXISTING HIGH MAST POLE TO REMAIN
 - UNDERPASS LIGHT FIXTURE (BEAM MOUNTED)
 - 240/480V ELECTRICAL SERVICE POLE
 - GROUND BOX (BELOW GRADE) (TYPE D W/ APRON)
 - JUNCTION BOX (ABOVE GRADE)
 - ELECTRICAL POWER SOURCE
 - 2" PVC SCH. 40 OR AS NOTED
 - 2" PVC SCH. 80 BORED OR AS NOTED
 - RMC OR FLEX CONDUIT. SIZE AS NOTED
 - NEMA 3R, 30A DISCONNECT W/20 AMP FUSE
 - CONDUIT RUN #(#), SERVICE #(#)
 - ILL #(#)/ SERVICE #(#)- CIRCUIT #(#)
 - RDWY ILL ASSEM (TY SA 40T-8) (.25KW)S
 - RDWY ILL ASSEM (TY SA 40S-8) (.25KW)S
 - RDWY ILL ASSEM (TY SA 50T-8) (.4KW)S
 - RDWY ILL ASSEM (TY SA 50S-8) (.4KW)S
 - RDWY ILL ASSEM (TY SP 48S-8) (.4KW)S
 - RDWY ILL ASSEM (TY SP 48S-8-8) (.4KW)S
 - RDWY ILL ASSEM (TY SA 50S-8-8) (.4KW)S
 - EXISTING RDWY ILL ASSEM TO REMAIN

MATCH LINE STA 828+00

MATCH LINE STA 839+00



NOTE: SEE UNDERPASS ILLUMINATION SHEET 5 OF 13 FOR MORE INFORMATION

NON-CLOUDED AREAS WILL BE THE RESPONSIBILITY OF THE ENGINEER OF RECORD, FOR THE RESPECTIVE CHANGES SHOWN IN PREVIOUS REVISIONS OF THIS SHEET.

REV. 7 ONLY

©2018
Texas Department of Transportation

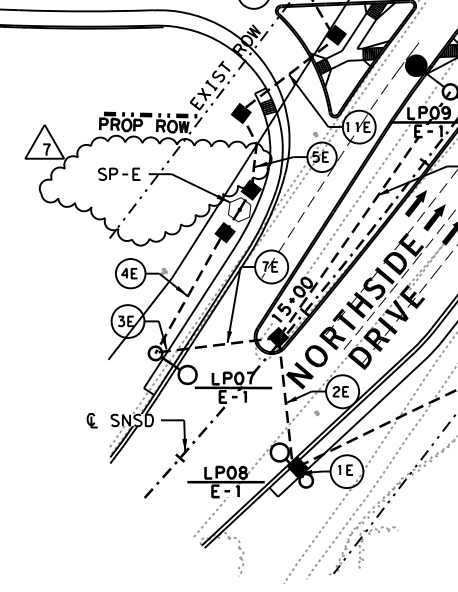
north tarrant
express | segments 3

north tarrant
infrastructure, llc F-15700

OTHON
CONSULTING ENGINEERS
F-1471 HOUSTON · AUSTIN · DALLAS

FIROZE SHAMS
97215
LICENSED PROFESSIONAL ENGINEER
11/29/2018
GLOBAL CIVIL SOLUTIONS
FIRM REG# F-12801

RUN	CIRCUIT AND CONDUCTOR RUN										REMARKS
	CONDUCTOR LENGTH					CONDUIT LENGTH (FT)					
	GROUND		POWER			2" PVC SCH 40	2" PVC SCH 80	2" PVC SCH 40			
#8 BARE (620-2011)	#10 BARE (620-2013)	#6 XHHW (620-2010)	#8 XHHW (620-2012)	#10 XHHW (620-2014)	TRENCHED (618-2018)	BORED (618-2035)	ENCASED (618-2080)				
1E	15	-	-	30	-	10	-	-	-	-	2#8 E-1
2E	85	-	-	170	-	80	-	-	-	-	2#8 E-1
3E	15	-	-	30	-	10	-	-	-	-	2#8 E-1
4E	75	-	-	150	-	70	-	-	-	-	2#8 E-1
5E	50	-	-	100	-	45	-	-	-	-	2#8 E-1
6E	165	-	-	330	-	160	-	-	-	-	2#8 E-1
7E	55	-	-	110	-	50	-	-	-	-	2#8 E-1
8E	465	-	-	930	-	460	-	-	-	-	2#8 E-1
9E	-	-	-	-	-	OMITTED	-	-	-	-	-
10E	167	-	-	334	-	165	-	-	-	-	2#8 E-1
11E	65	-	-	130	-	60	-	-	-	-	2#8 E-1
12E	55	-	-	110	-	50	-	-	-	-	2#8 E-1
13E	120	-	-	240	-	115	-	-	-	-	2#8 E-1
14E	243	-	-	486	-	240	-	-	-	-	2#8 E-1
15E	250	-	-	500	-	245	-	-	-	-	2#8 E-1
16E	55	-	-	110	-	50	-	-	-	-	2#8 E-1
17E	298	-	-	596	-	295	-	-	-	-	2#8 E-1
21E	91	-	-	182	-	85	-	-	-	-	2#8 E-1
22E	81	-	-	162	-	75	-	-	-	-	2#8 E-1
23E	20	-	-	40	-	15	-	-	-	-	CONDUIT ENCASED IN CTB; 2#8 E-1
24E	278	-	-	556	-	275	-	-	-	-	CONDUIT ENCASED IN CTB; 2#8 E-1
25E	217	-	-	434	-	215	-	-	-	-	CONDUIT ENCASED IN CTB; 2#8 E-1
34E	-	85	-	-	170	80	-	-	-	-	2#10 E-1
1G	55	-	-	110	-	50	-	-	-	-	2#8 G-2
2G	175	-	-	350	-	170	-	-	-	-	CONDUIT ENCASED IN CTB; 2#8 G-2
3G	225	-	-	450	-	220	-	-	-	-	CONDUIT ENCASED IN CTB; 2#8 G-2
4G	235	-	-	470	-	230	-	-	-	-	CONDUIT ENCASED IN CTB; 2#8 G-2
5G	148	-	-	296	-	145	-	-	-	-	2#8 G-2



RUN	CIRCUIT AND CONDUCTOR RUN										REMARKS
	CONDUCTOR LENGTH					CONDUIT LENGTH (FT)					
	GROUND		POWER			2" PVC SCH 40	2" PVC SCH 80	2" PVC SCH 40			
#6 BARE (620-2009)	#8 BARE (620-2011)	#10 BARE (620-2013)	#6 XHHW (620-2010)	#8 XHHW (620-2012)	#10 XHHW (620-2014)	TRENCHED (618-2018)	BORED (618-2035)	ENCASED (618-2080)			
7G	-	75	-	-	150	-	-	-	70	-	CONDUIT ENCASED IN CTB; 2#8 E-1
8G	-	133	-	-	266	-	-	-	130	-	CONDUIT ENCASED IN CTB; 2#8 E-2
9G	26	-	-	52	52	-	20	-	-	-	2#6 G-1; 2#8 G-2
10G	73	-	-	146	-	-	70	-	-	-	2#6 G-1
11G	-	20	-	-	40	-	15	-	-	-	2#8 G-1
12G	-	34	-	-	68	-	30	-	-	-	CONDUIT ENCASED IN CTB; 2#8 G-1
19G	-	122	-	-	244	-	-	120	-	-	CONDUIT ENCASED IN CTB; 2#8 G-1
20G	-	274	-	-	548	-	-	235	-	-	CONDUIT ENCASED IN CTB; 2#8 G-1
21G	-	238	-	-	476	-	-	215	-	-	CONDUIT ENCASED IN CTB; 2#8 G-1
22G	-	240	-	-	480	-	-	235	-	-	CONDUIT ENCASED IN CTB; 2#8 G-1
23G	-	270	-	-	540	-	-	265	-	-	CONDUIT ENCASED IN CTB; 2#8 G-1
24G	-	82	-	-	164	-	-	80	-	-	CONDUIT ENCASED IN CTB; 2#8 G-1
30G	-	-	-	-	-	-	-	-	-	-	OMITTED
31G	-	-	-	-	-	-	-	-	-	-	OMITTED

NORTH TARRANT EXPRESS - SEGMENT 3AS
Traffic Operations - Illumination

ILLUMINATION LAYOUT
STA 828+00 TO STA 839+00

SCALE: 1" = 100' SHEET 9 OF 25

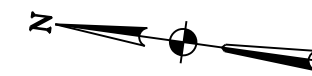
FED. RD. DIV. NO.	FEDERAL AID PROJECT NO.	SHEET NO.
6	IM 0355 (152)	ILL-09
STATE	DISTRICT	COUNTY
TEXAS	FT. WORTH	TARRANT
CONT	SECT	JOB
0014	16	179
		HIGHWAY NO
		IH35W

c501f 11/29/2018 2:54:00 PM R:\GROUP05\IN HOUSE\Segment South\Design Change Request\3AS-1445 TRA OPS-ILL CA00-09 ILL NTE3AS-ELEC-PL ILL009.dgn

IFC REV	DATE	BY	DESCRIPTION
0	12/24/2014	JPT	TRAFFIC OPS - ILLUMINATION IFC
1	05/04/2015	JPT	IFC NDC S-035
2	07/01/2015	JPT	IFC NDC S-060
30	07/10/2018	FS	IFC NDC DCR-S-1387
34	03/14/2019	FS	IFC NDC DCR-S-1547

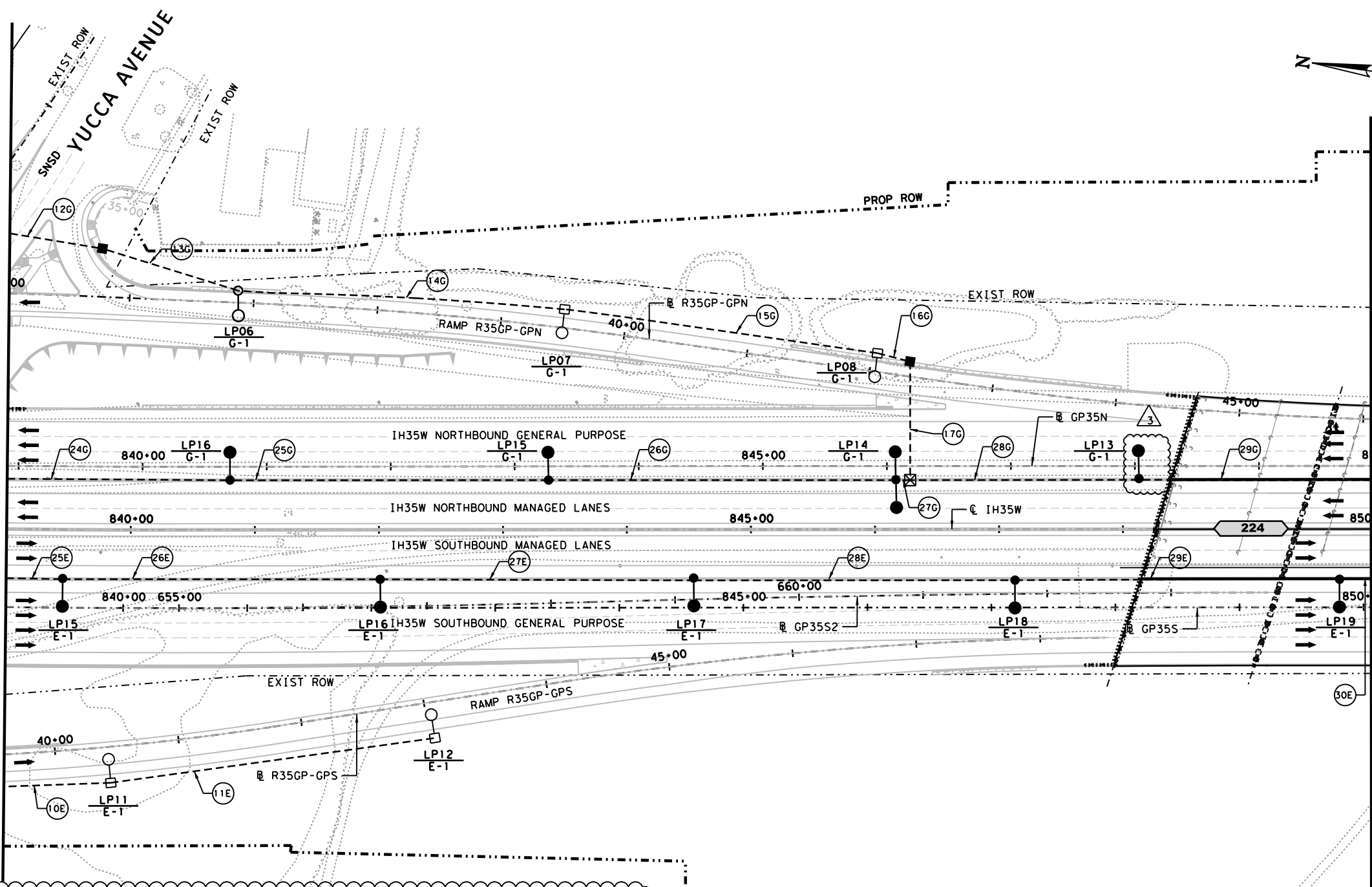
LEGEND

- HIGH MAST POLE (USED ONLY ON SYMMETRICAL FIXTURES)
- ➔ HIGH MAST POLE WITH FIXTURE ORIENTATION ARROW (USED ONLY ON ASYMMETRICAL FIXTURES)
- ⊠ EXISTING HIGH MAST POLE TO REMAIN
- ⬆ UNDERPASS LIGHT FIXTURE (BEAM MOUNTED)
- ⊕ 240/480V ELECTRICAL SERVICE POLE
- GROUND BOX (BELOW GRADE) (TYPE D W/ APRON)
- ⊠ JUNCTION BOX (ABOVE GRADE)
- ⊕ ELECTRICAL POWER SOURCE
- 2" PVC SCH. 40 OR AS NOTED
- === 2" PVC SCH. 80 BORED OR AS NOTED
- - - RMC OR FLEX CONDUIT. SIZE AS NOTED
- ⊠ NEMA 3R, 30A DISCONNECT W/20 AMP FUSE
- ⊠#X CONDUIT RUN #(#), SERVICE #(X)
- X Y-Z ILL # (X) / SERVICE # (Y) - CIRCUIT # (Z)
- RDWY ILL ASSEM (TY SA 40T-8) (.25KW)S
- RDWY ILL ASSEM (TY SA 40S-8) (.25KW)S
- RDWY ILL ASSEM (TY SA 50T-8) (.4KW)S
- RDWY ILL ASSEM (TY SA 50S-8) (.4KW)S
- RDWY ILL ASSEM (TY SP 48S-8) (.4KW)S
- RDWY ILL ASSEM (TY SP 48S-8-8) (.4KW)S
- RDWY ILL ASSEM (TY SA 50S-8-8) (.4KW)S
- ⊠ EXISTING RDWY ILL ASSEM TO REMAIN



MATCH LINE STA 839+00

MATCH LINE STA 850+00



WEST FORK TRINITY RIVER

NON-CLOUDED AREAS WILL BE THE RESPONSIBILITY OF THE ENGINEER OF RECORD, FOR THE RESPECTIVE CHANGES SHOWN IN PREVIOUS REVISIONS OF THIS SHEET.

REV. 4 ONLY



3/14/2019
GLOBAL CIVIL SOLUTIONS
FIRM REG# F-12801

Texas Department of Transportation

north tarrant
express | segments 3

north tarrant
infrastructure, llc F-15700

OTHON
CONSULTING ENGINEERS
F-1471 HOUSTON · AUSTIN · DALLAS

NORTH TARRANT EXPRESS - SEGMENT 3AS
Traffic Operations - Illumination

ILLUMINATION LAYOUT
STA 839+00 TO STA 850+00

SCALE: 1" = 100' SHEET 10 OF 25

FED. RD. DIV. NO.	FEDERAL AID PROJECT NO.	SHEET NO.
6	IM 0355 (152)	ILL-10
STATE	DISTRICT	COUNTY
Texas	FT. WORTH	TARRANT
CONT	SECT	JOB
0014	16	179
		HIGHWAY NO
		IH35W

RUN	CONDUIT AND CONDUCTOR RUN										REMARKS
	CONDUCTOR LENGTH (FT)						CONDUIT LENGTH (FT)				
	GROUND		POWER				2" PVC SCH 40	2" PVC SCH 80	2" PVC SCH 40		
# 6 BARE (620-2009)	# 8 BARE (620-2011)	# 10 BARE (620-2013)	# 6 XHHW (620-2010)	# 8 XHHW (620-2012)	# 10 XHHW (620-2014)	TRENCH3ED (618-2018)	BORED (618-2035)	ENCASED (618-2080)			
10E	-	92	-	-	184	-	90	-	-	-	2#8 E-1
11E	-	268	-	-	536	-	265	-	-	-	2#8 E-1
25E	-	52	-	-	104	-	-	-	50	-	CONDUIT ENCASED IN CTB; 2#8 E-1
26E	-	-	-	-	-	-	-	-	260	-	-
27E	-	258	-	-	516	-	-	-	255	-	CONDUIT ENCASED IN CTB; 2#8 E-1
28E	-	268	-	-	536	-	-	-	265	-	CONDUIT ENCASED IN CTB; 2#8 E-1
29E	-	268	-	-	536	-	-	-	265	-	CONDUIT ENCASED IN CTB; 2#8 E-1
30E	-	27	-	-	54	-	-	-	25	-	CONDUIT ENCASED IN CTB; 2#8 E-1
12G	93	-	-	186	-	-	90	-	-	-	2#6 G-1
13G	115	-	-	230	-	-	110	-	-	-	-
14G	268	-	-	536	-	-	265	-	-	-	2#6 G-1
15G	258	-	-	516	-	-	255	-	-	-	2#6 G-1
16G	35	-	-	70	-	-	30	-	-	-	2#6 G-1
17G	106	-	-	212	-	-	100	-	-	-	2#6 G-1
24G	-	182	-	-	364	-	-	180	-	-	CONDUIT ENCASED IN CTB; 2#8 G-1
25G	-	263	-	-	526	-	-	260	-	-	CONDUIT ENCASED IN CTB; 2#8 G-1
26G	-	288	-	-	576	-	-	285	-	-	CONDUIT ENCASED IN CTB; 2#8 G-1
27G	-	20	-	-	40	-	-	15	-	-	CONDUIT ENCASED IN CTB; 2#8 G-1
28G	-	195	-	-	390	-	-	190	-	-	CONDUIT ENCASED IN CTB; 2#8 G-1
29G	-	190	-	-	380	-	-	185	-	-	CONDUIT ENCASED IN CTB; 2#8 G-1

SUMMARY OF HIGH MAST/LIGHT POLE DETAILS					
POLE	DESCRIPTION	STATION	OFFSET (FT) SIDE	CIRCUIT	REMARKS
LP11	IL ASM (TY SA 40T-8) (.25KW)S	839+84.81	204 RT	E-1	-
LP12	IL ASM (TY SA 40T-8) (.25KW)S	842+45.08	168 RT	E-1	-
LP15	IL ASM (TY SP 48S-8) (.4KW)S	839+45.39	40 RT	E-1	-
LP16	IL ASM (TY SP 48S-8) (.4KW)S	842+01.05	40 RT	E-1	-
LP17	IL ASM (TY SP 48S-8) (.4KW)S	844+53.90	40 RT	E-1	-
LP18	IL ASM (TY SP 48S-8) (.4KW)S	847+12.93	40 RT	E-1	-
LP19	IL ASM (TY SP 48S-8) (.4KW)S	849+74.50	40 RT	G-1	-
LP06	IL ASM (TY SA 48S-8) (.25KW)S	840+86.70	193LT	G-1	-
LP07	IL ASM (TY SA 48S-8) (.25KW)S	843+50.00	178 LT	G-1	-
LP08	IL ASM (TY SA 48S-8) (.25KW)S	846+02.10	142 LT	G-1	-
LP16	IL ASM (TY SP 48S-8) (.4KW)S	840+80.03	40 LT	G-1	-
LP15	IL ASM (TY SP 48S-8) (.4KW)S	843+36.91	40 LT	G-1	-
LP14	IL ASM (TY SP 48S-8) (.4KW)S	846+17.12	40 LT	G-1	-
LP13	IL ASM (TY SP 48S-8) (.4KW)S	848+33.12	40 LT	G-1	-

NOTE: ALL STATIONS AND OFFSETS ARE REFERENCED FROM CL IH35W

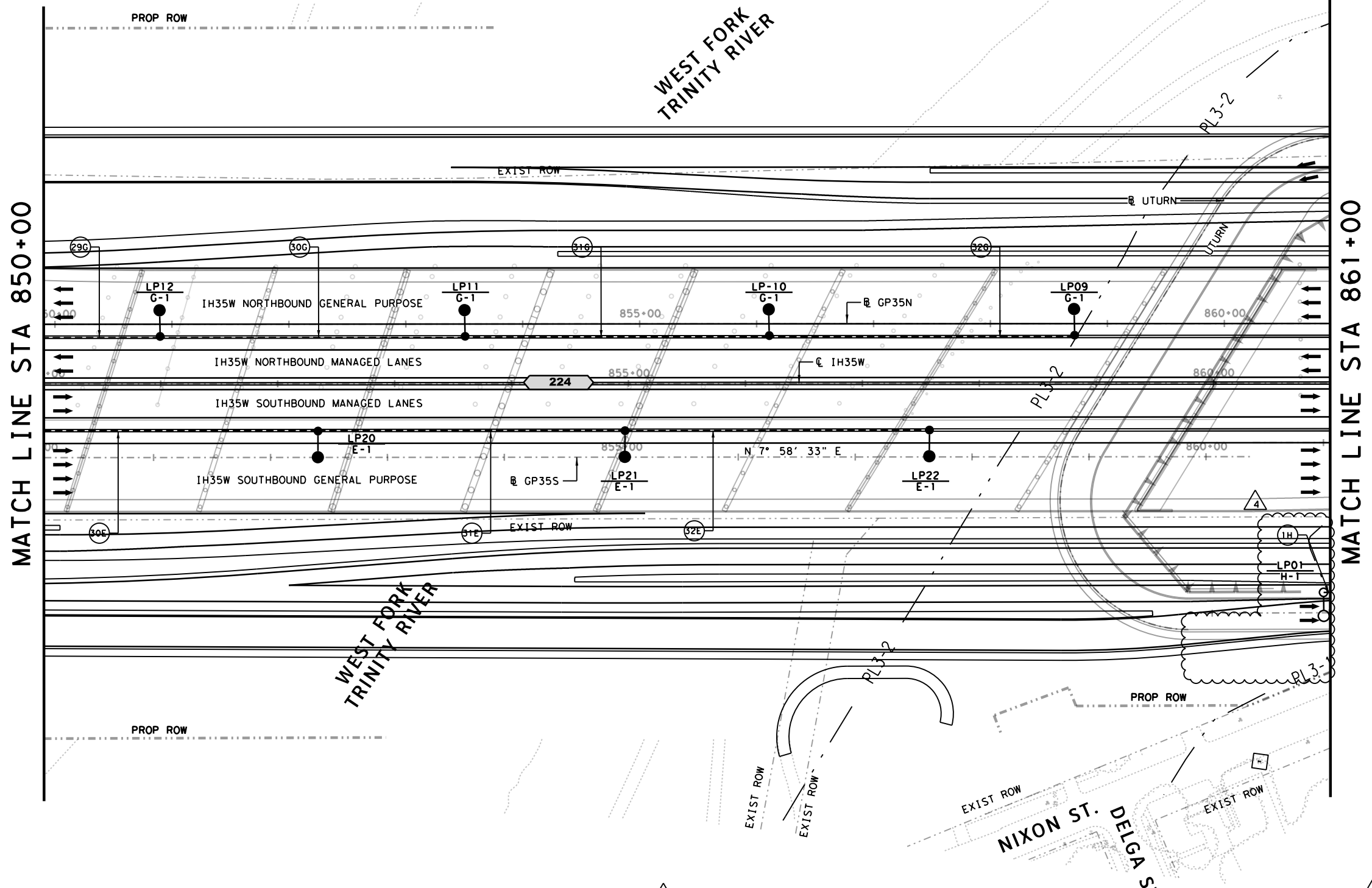
C501F 3/14/2019 11:41:48 PM R:\GROUP05\IN HOUSE\Segment South\Design Change Request\3AS-1547 TRA-ILL\CADD\09 ILL\NTE3AS-ELEC-PL1010.dgn

IFC REV	DATE	BY	DESCRIPTION
0	12/24/2014	JPT	TRAFFIC OPS - ILLUMINATION IFC
1	05/04/2015	JPT	IFC NDC S-035
2	07/01/2015	JPT	IFC NDC S-060
8	10/12/2016	FS	IFC NDC DCR-S-0639
9	12/05/2016	FS	IFC NDC DCR-S-0707

LEGEND

- HIGH MAST POLE (USED ONLY ON SYMMETRICAL FIXTURES)
- HIGH MAST POLE WITH FIXTURE ORIENTATION ARROW (USED ONLY ON ASYMMETRICAL FIXTURES)
- EXISTING HIGH MAST POLE TO REMAIN
- UNDERPASS LIGHT FIXTURE (BEAM MOUNTED)
- 240/480V ELECTRICAL SERVICE POLE
- GROUND BOX (BELOW GRADE) (TYPE D W/ APRON)
- JUNCTION BOX (ABOVE GRADE)
- ELECTRICAL POWER SOURCE
- 2" PVC SCH. 40 OR AS NOTED
- 2" PVC SCH. 80 BORED OR AS NOTED
- RMC OR FLEX CONDUIT. SIZE AS NOTED
- NEMA 3R, 30A DISCONNECT W/20 AMP FUSE
- CONDUIT RUN #(#), SERVICE #(#)
- ILL #(#)/ SERVICE #(#)- CIRCUIT #(#)
- RDWY ILL ASSEM (TY SA 40T-8) (.25KW)S
- RDWY ILL ASSEM (TY SA 40S-8) (.25KW)S
- RDWY ILL ASSEM (TY SA 50T-8) (.4KW)S
- RDWY ILL ASSEM (TY SA 50S-8) (.4KW)S
- RDWY ILL ASSEM (TY SP 48S-8) (.4KW)S
- RDWY ILL ASSEM (TY SP 48S-8-8) (.4KW)S
- RDWY ILL ASSEM (TY SA 50S-8-8) (.4KW)S
- EXISTING RDWY ILL ASSEM TO REMAIN
- RDWY ILL ASSEM (TY SP 38S-8) (.25KW)S

NON-CLOUDED AREAS WILL BE THE RESPONSIBILITY OF THE ENGINEER OF RECORD, FOR THE RESPECTIVE CHANGES SHOWN IN PREVIOUS REVISIONS OF THIS SHEET.



RUN	CONDUIT AND CONDUCTOR RUN						REMARKS	
	CONDUCTOR LENGTH (FT)			CONDUIT LENGTH (FT)				
	GROUND			POWER				
	# 6 BARE (620-2013)	# 8 BARE (620-2011)	# 10 BARE (620-2011)	# 6 XHHW (620-2011)	# 8 XHHW (620-2011)	# 10 XHHW (620-2011)		
				TRENCH3ED (618-2018)	BORED (618-2035)	ENCASED (618-2035)		
30E	-	242	-	-	484	-	240	CONDUIT ENCASED IN CTB; 2#8 E-1
31E	-	268	-	-	536	-	265	CONDUIT ENCASED IN CTB; 2#8 E-1
32E	-	268	-	-	536	-	265	CONDUIT ENCASED IN CTB; 2#8 E-1
29G	-	108	-	-	216	-	106	CONDUIT ENCASED IN CTB; 2#8 G-1
30G	-	268	-	-	536	-	265	CONDUIT ENCASED IN CTB; 2#8 G-1
31G	-	268	-	-	536	-	265	CONDUIT ENCASED IN CTB; 2#8 G-1
32G	-	268	-	-	536	-	265	CONDUIT ENCASED IN CTB; 2#8 G-1
1H	-	-	-	-	-	-	-	OMITTED

SUMMARY OF HIGH MAST/LIGHT POLE DETAILS					
POLE	DESCRIPTION	STATION	OFFSET (FT) SIDE	CIRCUIT	REMARKS
LP20	IL ASM (TY SP 48S -8) (.4KW)S	852+34.51	40RT	E-1	-
LP21	IL ASM (TY SP 48S -8) (.4KW)S	854+96.98	40RT	E-1	-
LP22	IL ASM (TY SP 48S -8) (.4KW)S	857+57.38	40RT	E-1	-
LP12	IL ASM (TY SP 48S -8) (.4KW)S	850+99.38	40LT	G-1	-
LP11	IL ASM (TY SP 48S -8) (.4KW)S	853+59.64	40LT	G-1	-
LP10	IL ASM (TY SP 48S -8) (.4KW)S	856+20.34	40LT	G-1	-
LP09	IL ASM (TY SP 48S -8) (.4KW)S	858+81.41	40LT	G-1	-
LP01	IL ASM (TY SA 48S -8) (.25KW)S	860+94.40	179 RT	H-1	-

NOTE: ALL STATIONS AND OFFSETS ARE REFERENCED FROM CL IH35W

FOR REV. 4 ONLY

12/05/2016
GLOBAL CIVIL SOLUTIONS
FIRM REG# F-12801

Texas Department of Transportation

north tarrant express | segments 3
north tarrant infrastructure, llc F-15700

OTHON CONSULTING ENGINEERS
F-1471 HOUSTON · AUSTIN · DALLAS

NORTH TARRANT EXPRESS - SEGMENT 3AS
Traffic Operations - Illumination
ILLUMINATION LAYOUT
STA 850+00 TO STA 861+00

SCALE: 1" = 100' SHEET 11 OF 25

FED. RD. DIV. NO. 6	FEDERAL AID PROJECT NO. IM 0355 (152)	SHEET NO. ILL-11
STATE TEXAS	DISTRICT FT. WORTH	COUNTY TARRANT
CONT 0014	SECT 16	JOB HIGHWAY NO 179 IH35W

R:\GUP005\IN HOUSE\Segment 3\AS-0107\CADD\09 ILL\NTE3AS.ELEC-PL11011.dgn 12/27/2016 2:47:35 PM

R:\GUP005\IN HOUSE\Segment 3\AS-0107\CADD\09 ILL\NTE3AS.ELEC-PL11011.dgn 12/27/2016 2:47:35 PM