

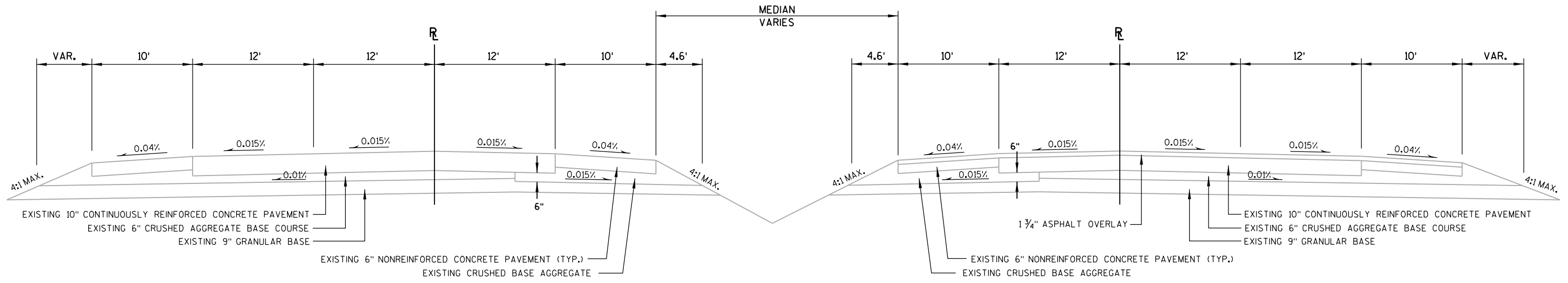


Highway Factors Attachment – As Built Plans for IH 39 in Columbia County

Arlington, WI

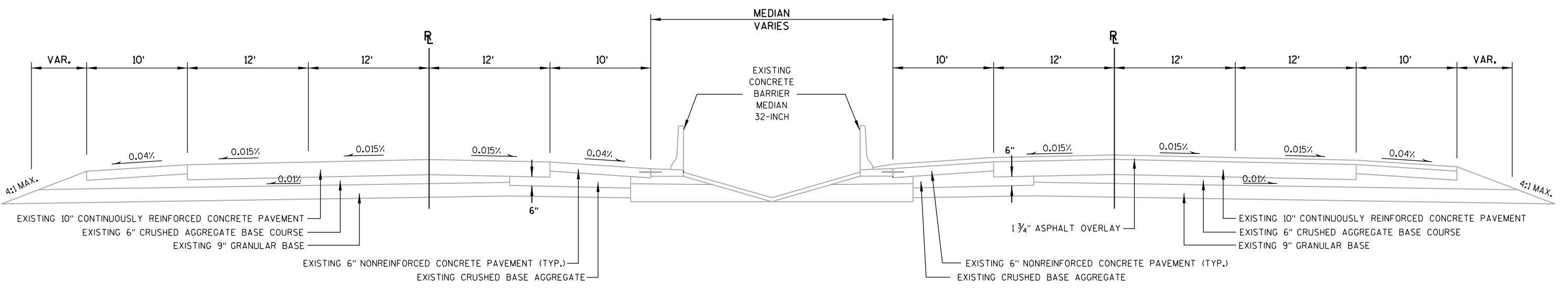
HWY20FH006

(15 pages)



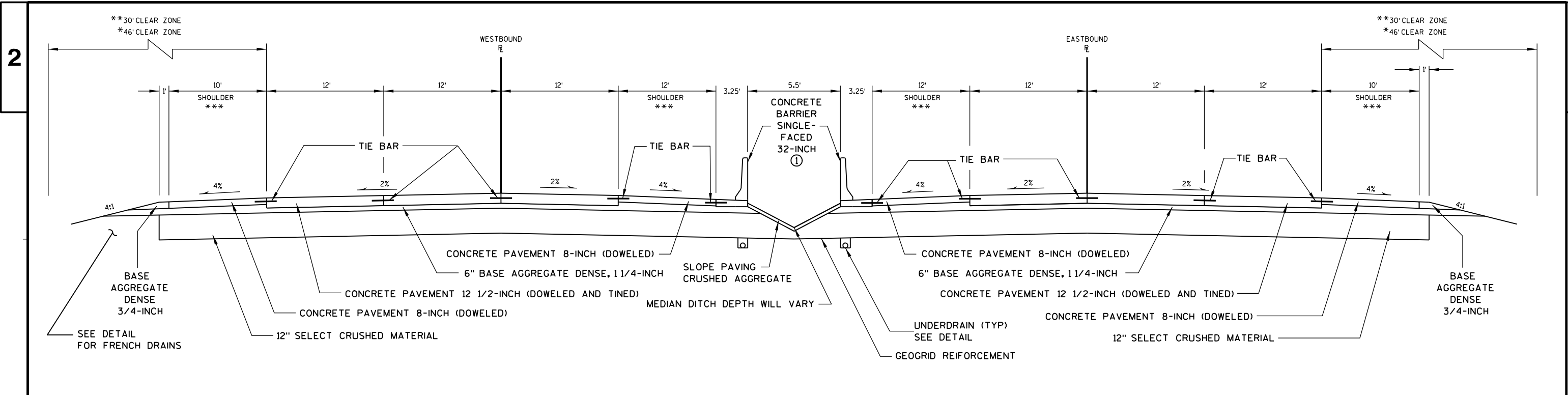
EXISTING TYPICAL SECTION

WESTBOUND	EASTBOUND
1554+00 - 1576+25	1554+00 - 1576+25
1583+25 - 1595+75	1583+25 - 1623+00
1601+50 - 1623+00	1633+25 - 1750+00
1633+25 - 1750+00	



EXISTING TYPICAL SECTION

WESTBOUND	EASTBOUND
1576+25 - 1583+25	1576+25 - 1583+25
1595+75 - 1601+50	1623+00 - 1633+25
1623+00 - 1633+25	

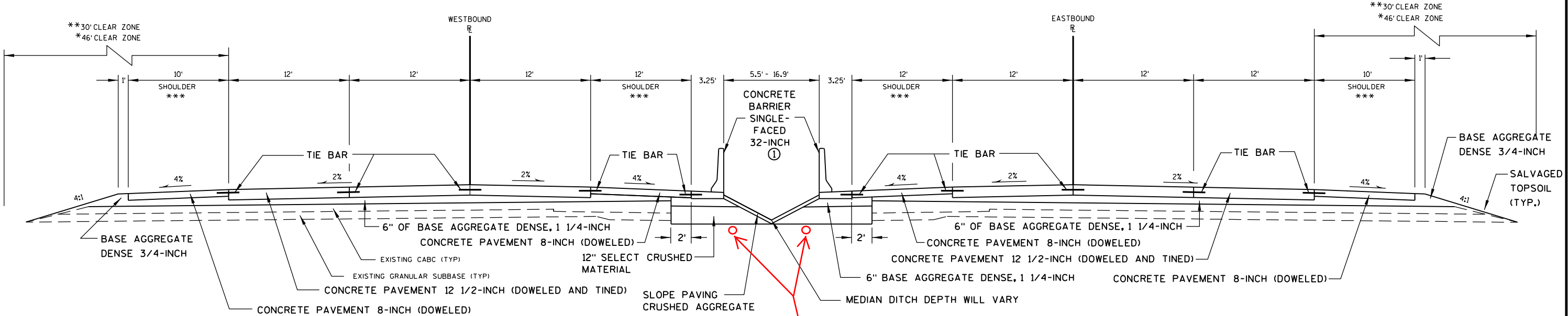


WESTBOUND
 STA. 1554+00 - 1592+00
 STA. 1647+00 - 1655+00
 STA. 1731+00 - 1750+00

TYPICAL FINISHED SECTION

EASTBOUND
 STA. 1554+00 - 1595+00
 STA. 1645+00 - 1662+00
 STA. 1730+00 - 1750+00

- * CLEAR ZONE SHOWN FOR TREE REMOVAL.
- ** CLEAR ZONE SHOWN FOR PIPE GRATE INSTALLATION.
- *** SEE OPTIONAL SHOULDER PAVING DETAIL
- **** PLACE GEOGRID REINFORCEMENT BELOW SELECT CRUSHED MATERIAL
- ① PLACE SLOTS FOR DRAINAGE FROM STATION 1591+50 TO 1602+50 AND STATION 1743+50 TO 1750+00. SLOT INSTALLATION IS INCIDENTAL TO CONCRETE BARRIER SINGLE-FACED 32-INCH

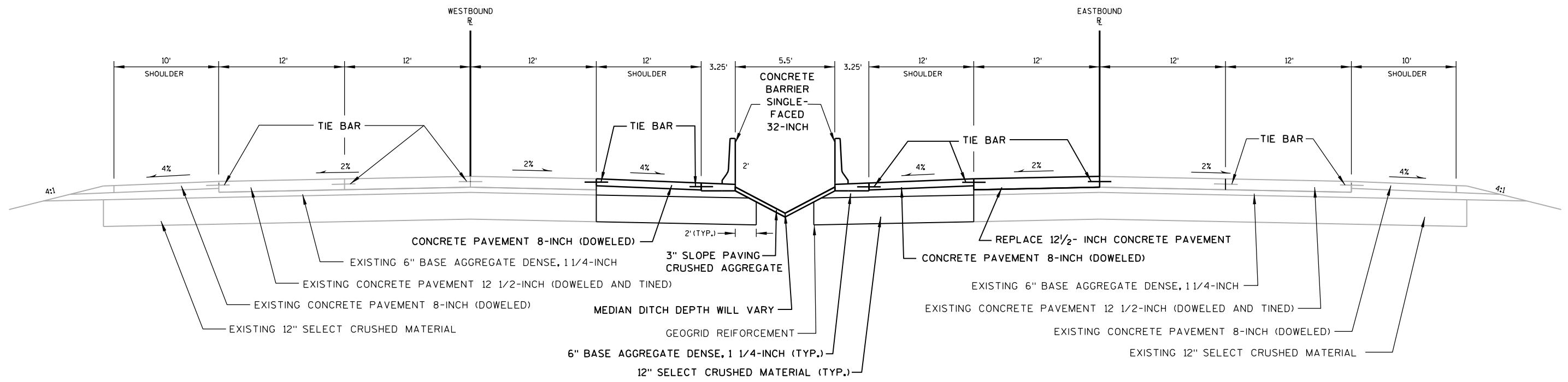


WESTBOUND
 STA. 1592+00 - 1647+00
 STA. 1655+00 - 1731+00

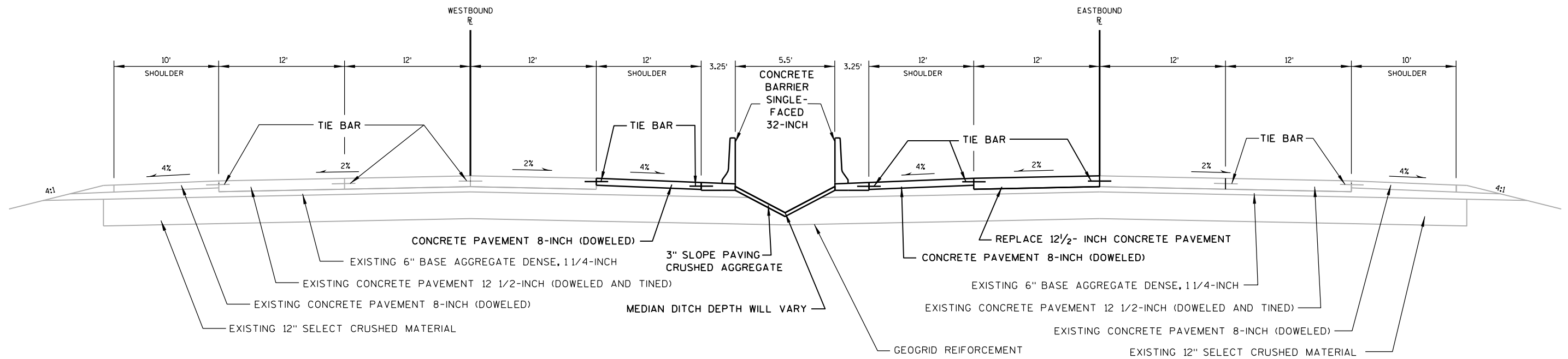
TYPICAL FINISHED SECTION

EASTBOUND
 STA. 1595+00 - 1645+00
 STA. 1662+00 - 1730+00

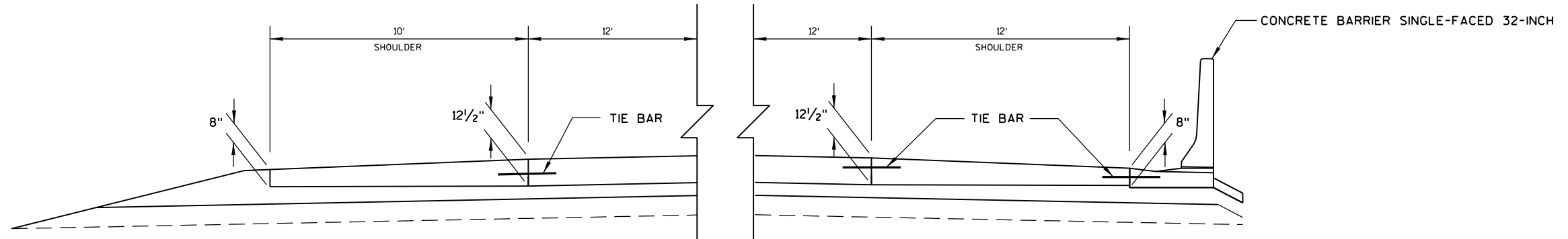
- * CLEAR ZONE SHOWN FOR TREE REMOVAL.
- ** CLEAR ZONE SHOWN FOR PIPE GRATE INSTALLATION.
- *** SEE OPTIONAL SHOULDER PAVING DETAIL



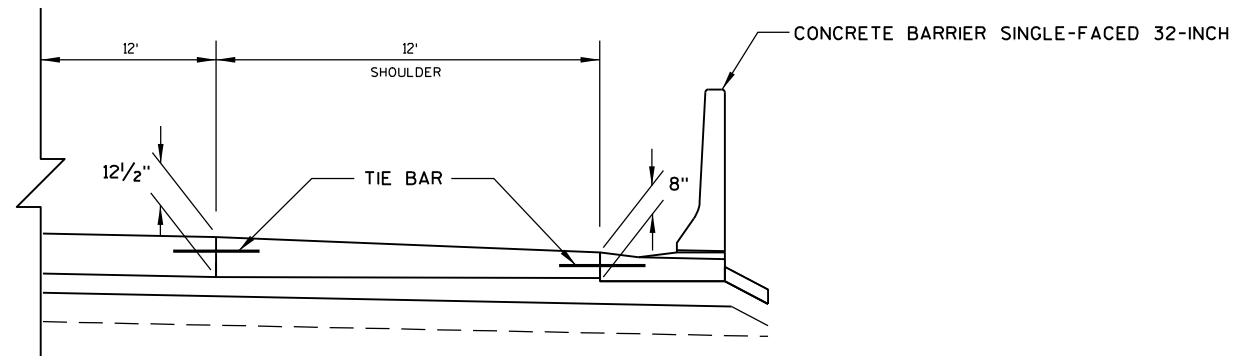
TYPICAL FINISHED SECTION
 STA. 1750+00 EB - STA. 1752+00 EB



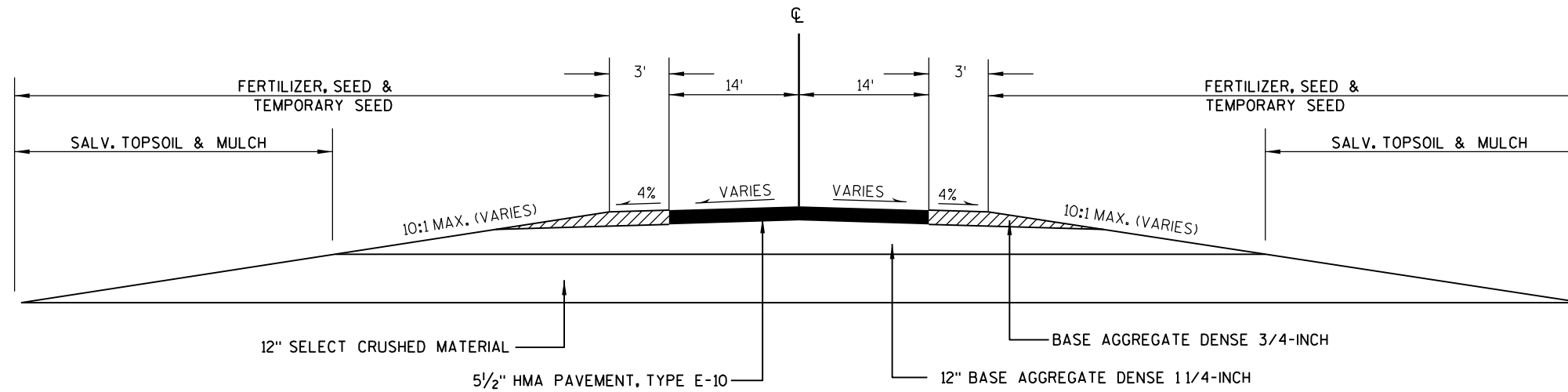
TYPICAL FINISHED SECTION
 STA. 1752+00 EB - STA. 1760+63 EB



OPTIONAL SHOULDER PAVING
 EASTBOUND & WESTBOUND
 (TO BE PAID FOR AS CONCRETE PAVEMENT 8-INCH)



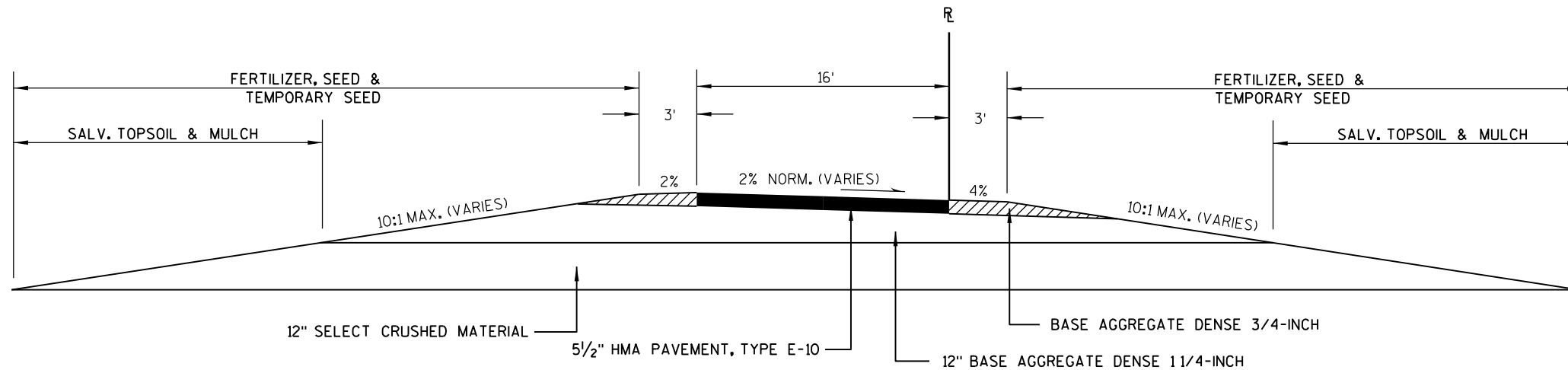
OPTIONAL SHOULDER PAVING
 EASTBOUND & WESTBOUND
 (TO BE PAID FOR AS CONCRETE PAVEMENT 8-INCH)



TYPICAL FINISHED SECTION

MEDIAN CROSSOVER

STA. 1583+52 - STA. 1595+49 (CROSSOVER "F")



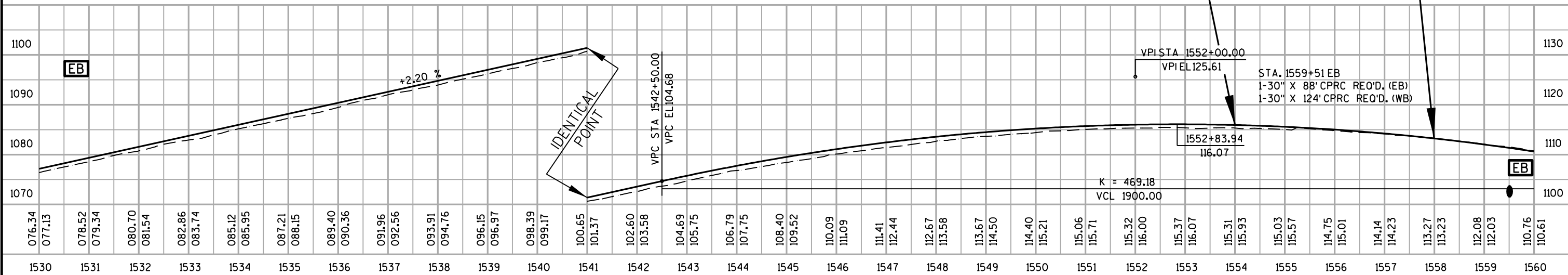
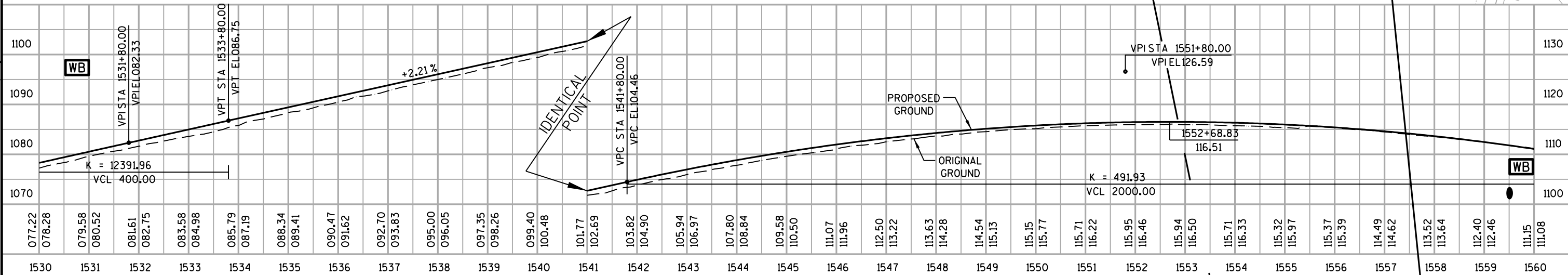
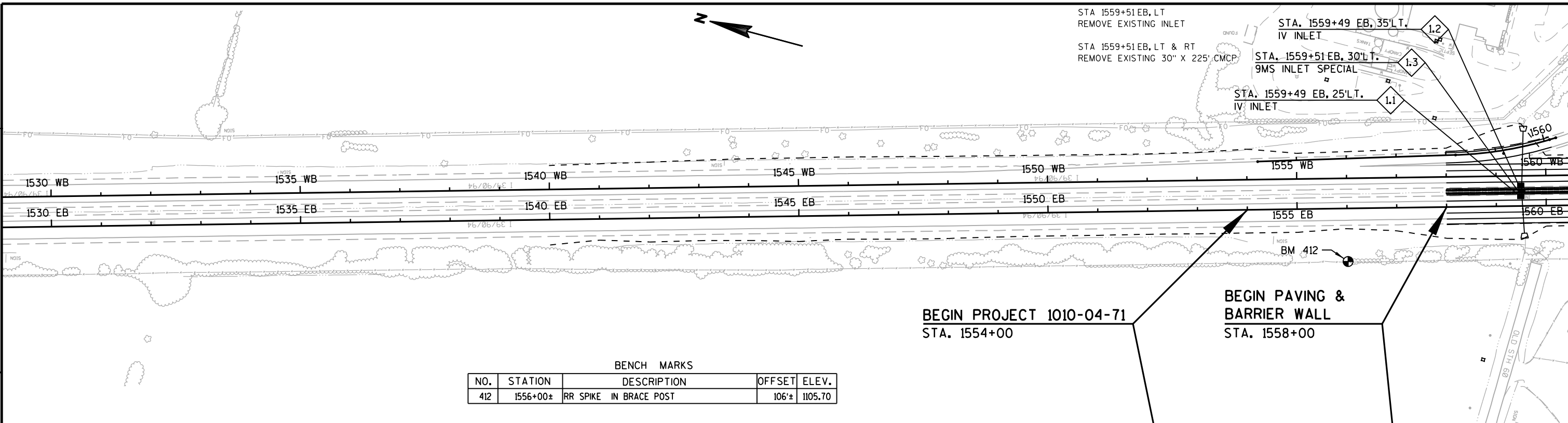
TYPICAL FINISHED SECTION

RAMP CROSSOVER

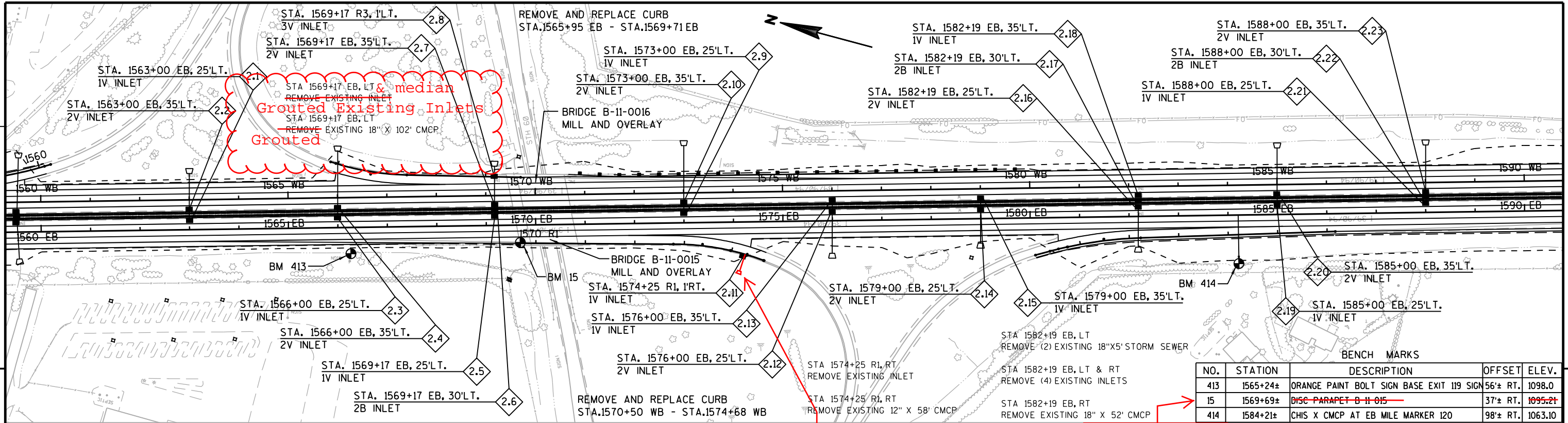
STA. 1585+00 - STA. 1588+64 (CROSSOVER "G")



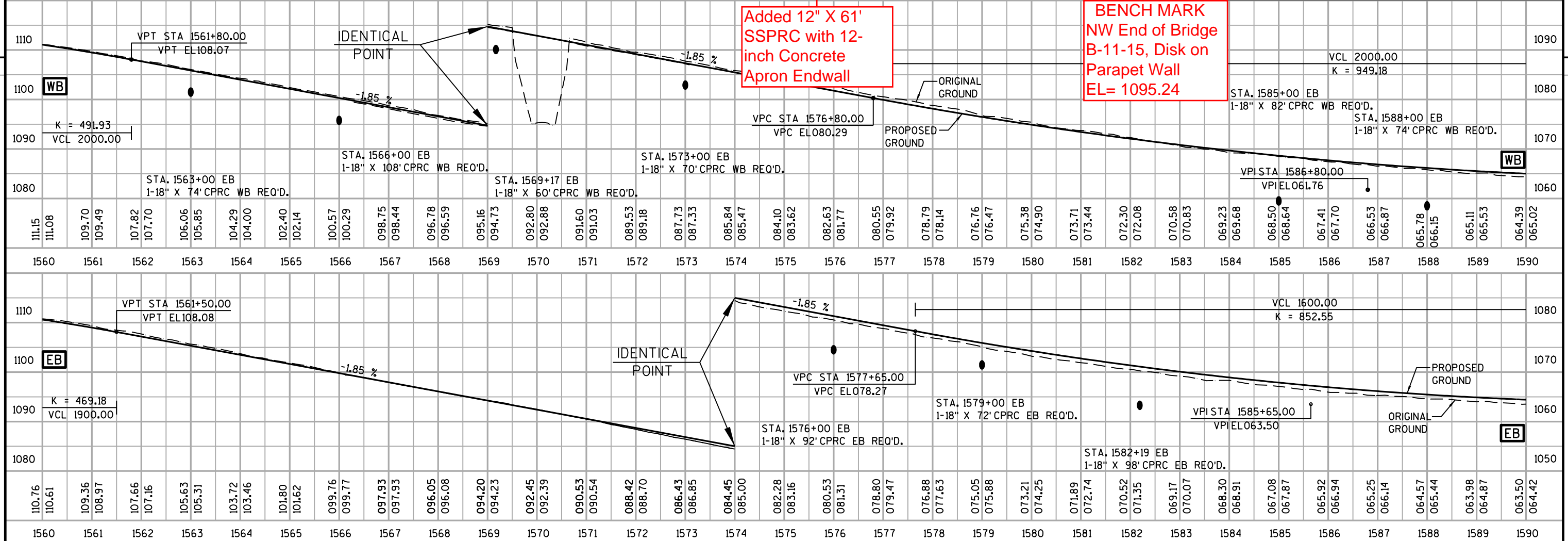
STA 1559+51 EB, LT
 REMOVE EXISTING INLET
 STA 1559+51 EB, LT & RT
 REMOVE EXISTING 30" X 225' CMCP
 STA. 1559+49 EB, 35' LT.
 IV INLET
 STA. 1559+51 EB, 30' LT.
 9MS INLET SPECIAL
 STA. 1559+49 EB, 25' LT.
 IV INLET



PROJECT NO: 1010-04-71 HWY: IH 39 COUNTY: COLUMBIA DUAL PLAN & PROFILE SHEET E

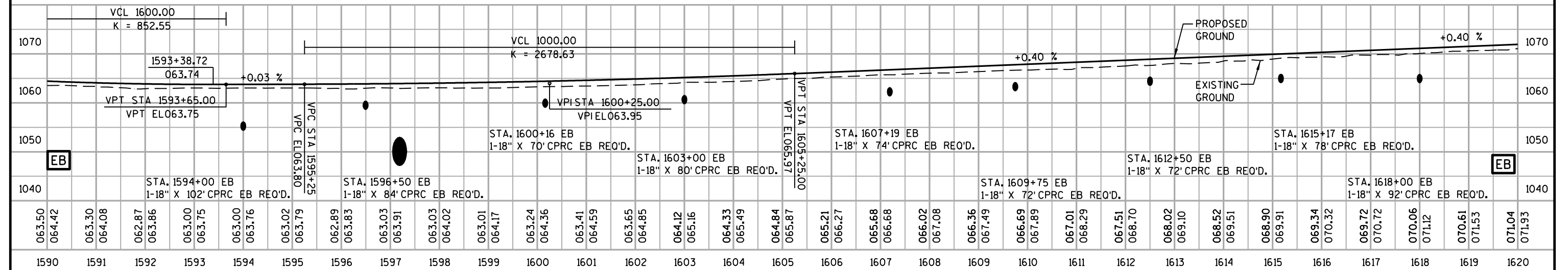
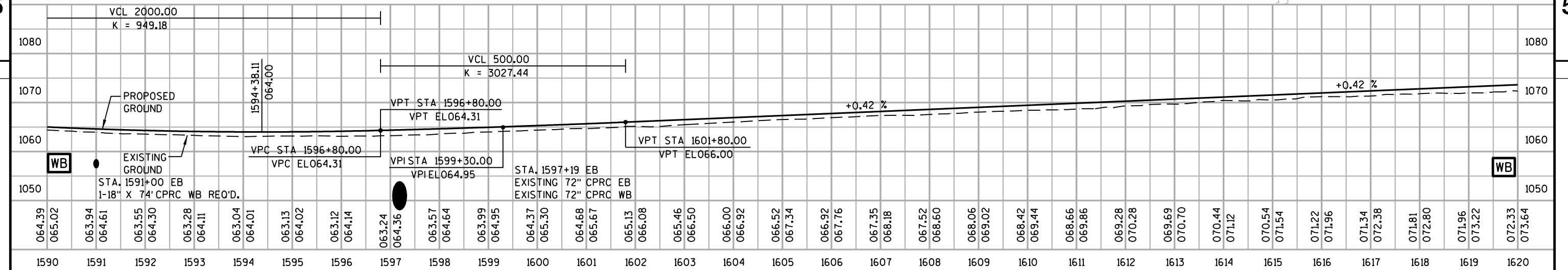
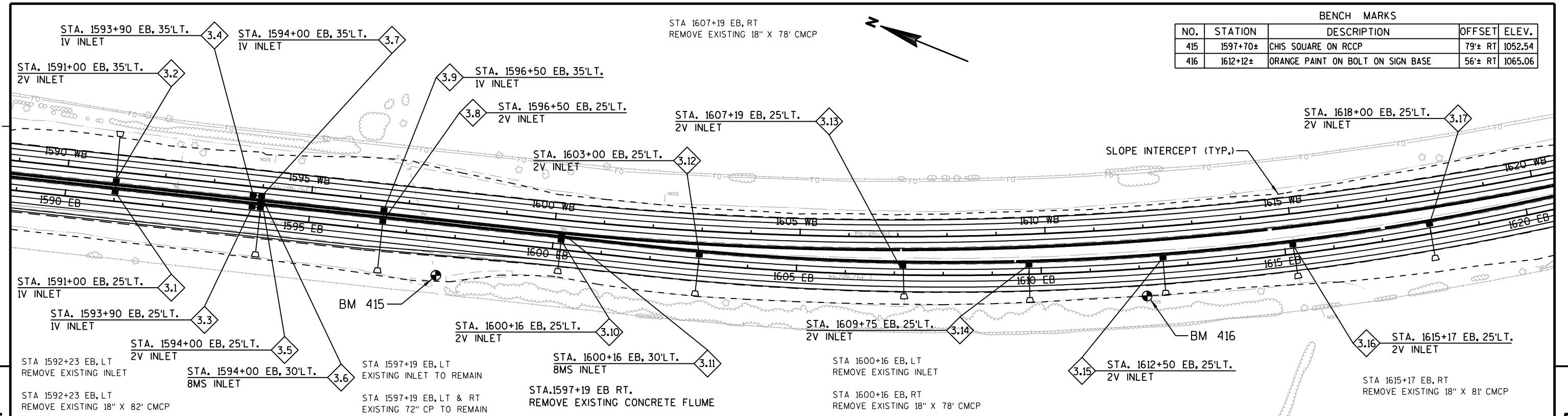


NO.	STATION	DESCRIPTION	OFFSET	ELEV.
413	1565+24±	ORANGE PAINT BOLT SIGN BASE EXIT 119 SIGN	56± RT.	1098.0
15	1569+69±	DISC PARAPET B-11-015	37± RT.	1095.21
414	1584+21±	CHIS X CMCP AT EB MILE MARKER 120	98± RT.	1063.10

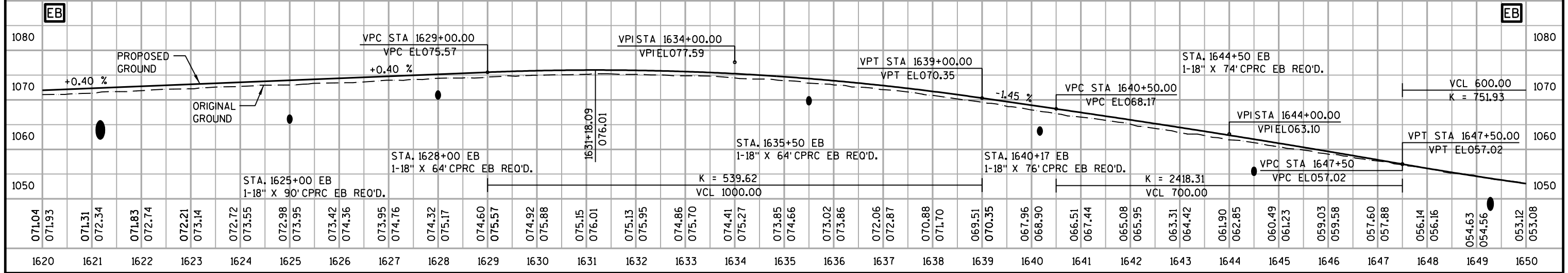
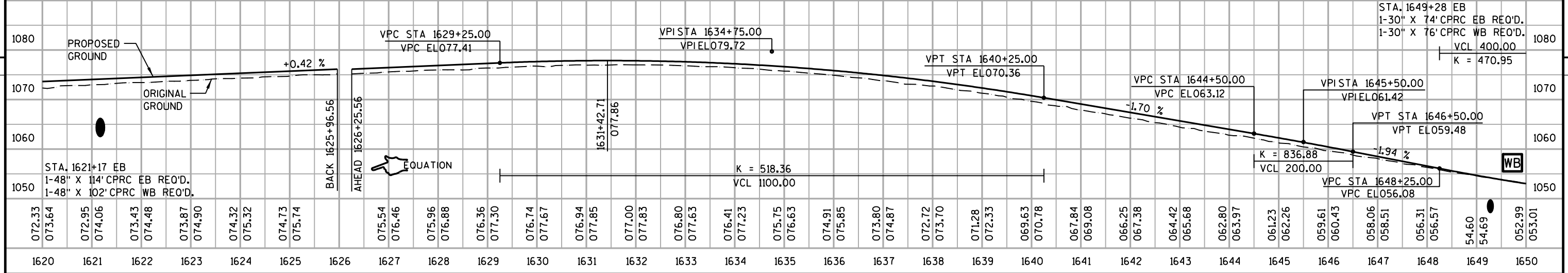
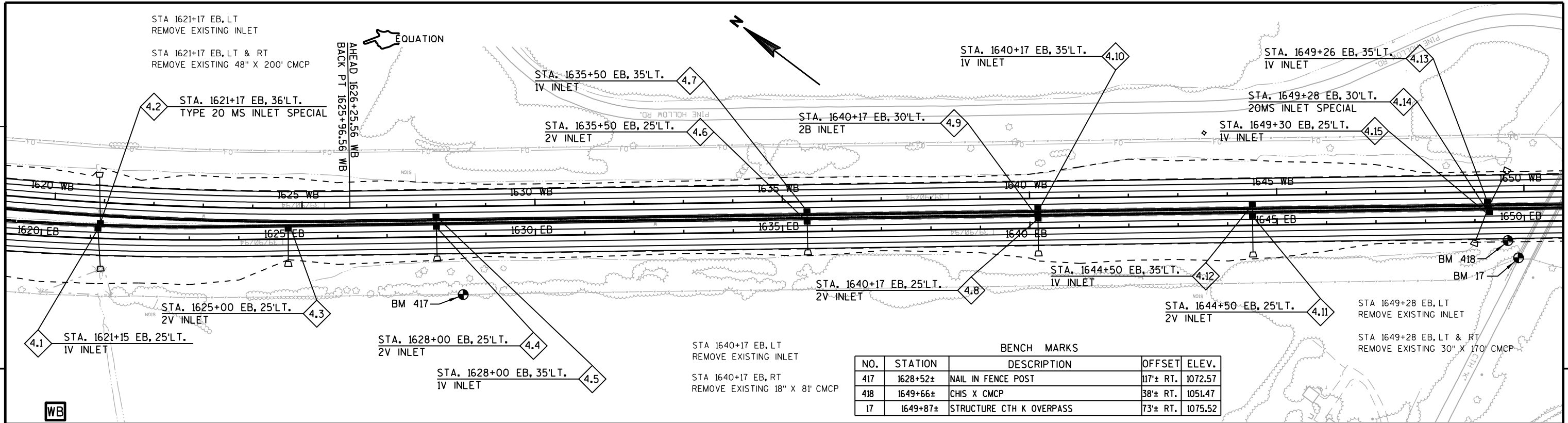


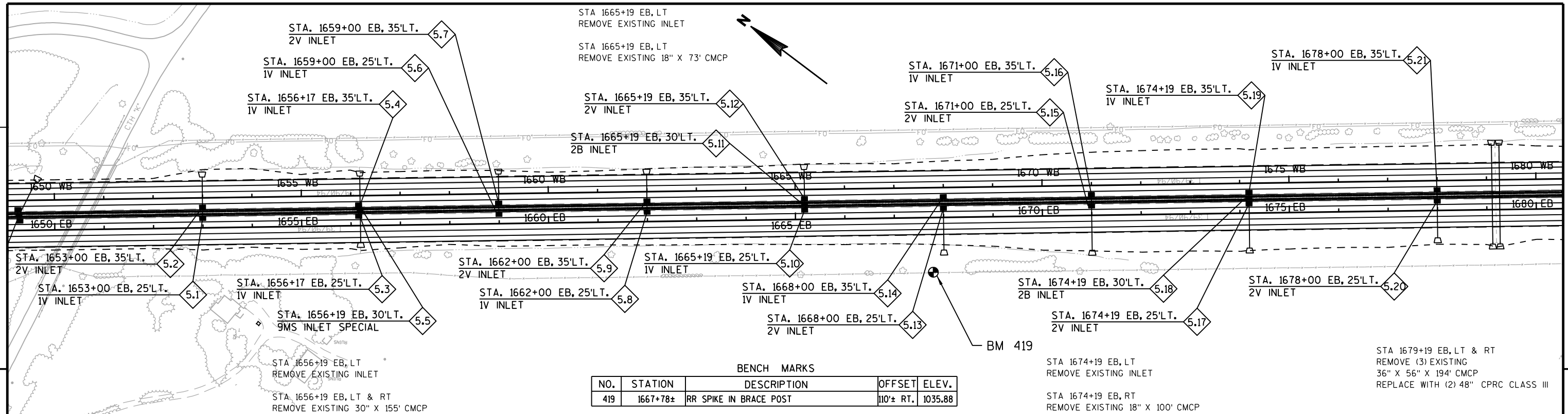
BENCH MARKS

NO.	STATION	DESCRIPTION	OFFSET	ELEV.
415	1597+70±	CHIS SQUARE ON RCCP	79± RT	1052.54
416	1612+12±	ORANGE PAINT ON BOLT ON SIGN BASE	56± RT	1065.06



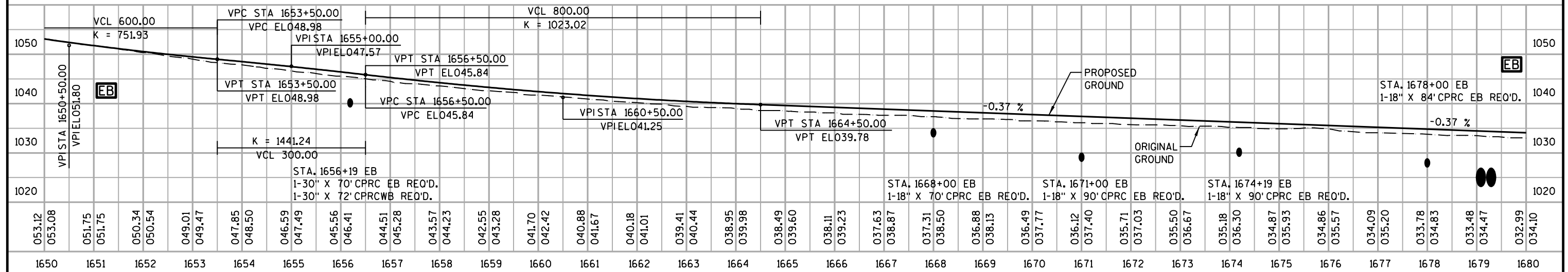
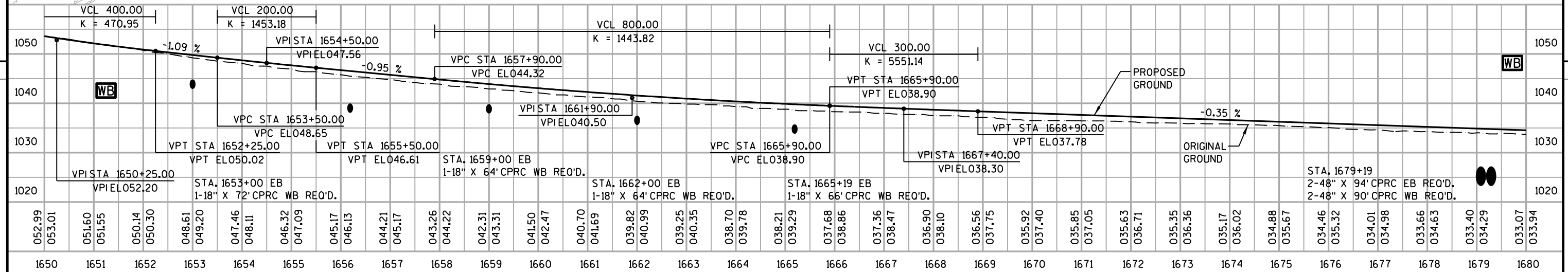
PROJECT NO: 1010-04-71	HWY: IH 39	COUNTY: COLUMBIA	DUAL PLAN & PROFILE	SHEET	E
------------------------	------------	------------------	---------------------	-------	---

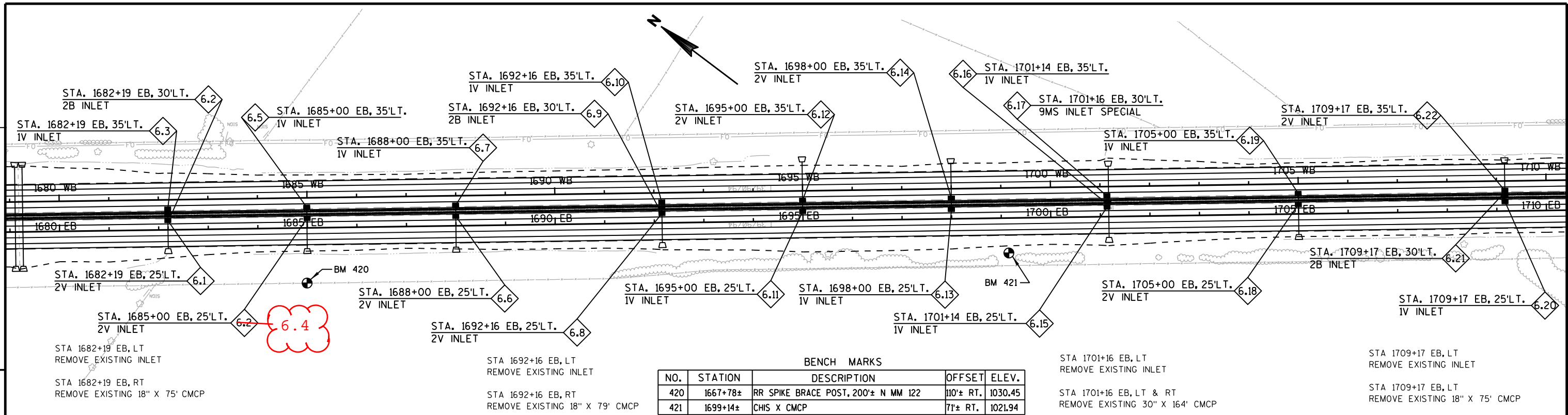




BENCH MARKS

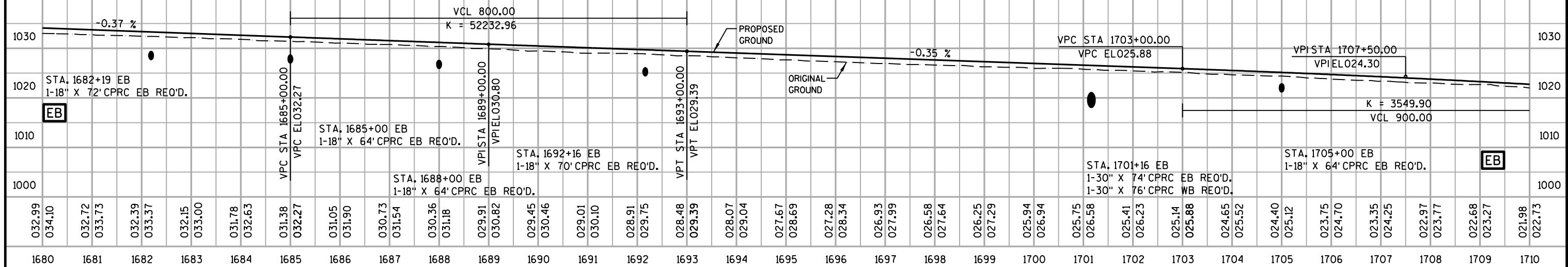
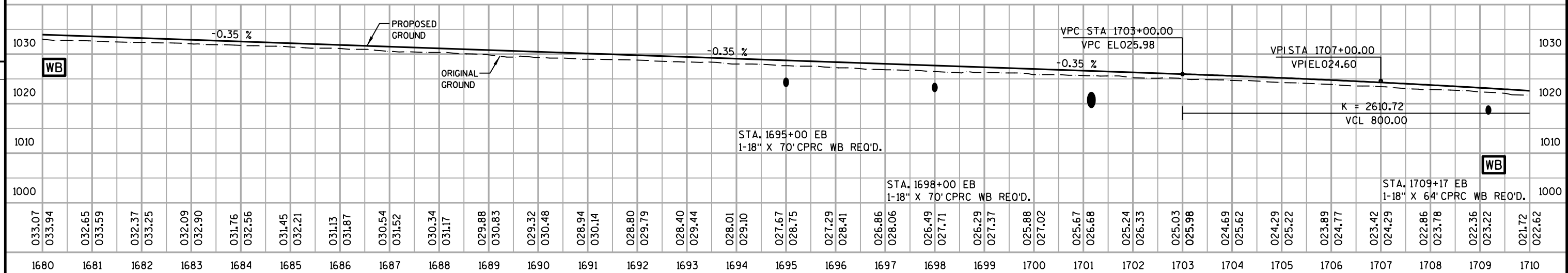
NO.	STATION	DESCRIPTION	OFFSET	ELEV.
419	1667+78±	RR SPIKE IN BRACE POST	110± RT.	1035.88





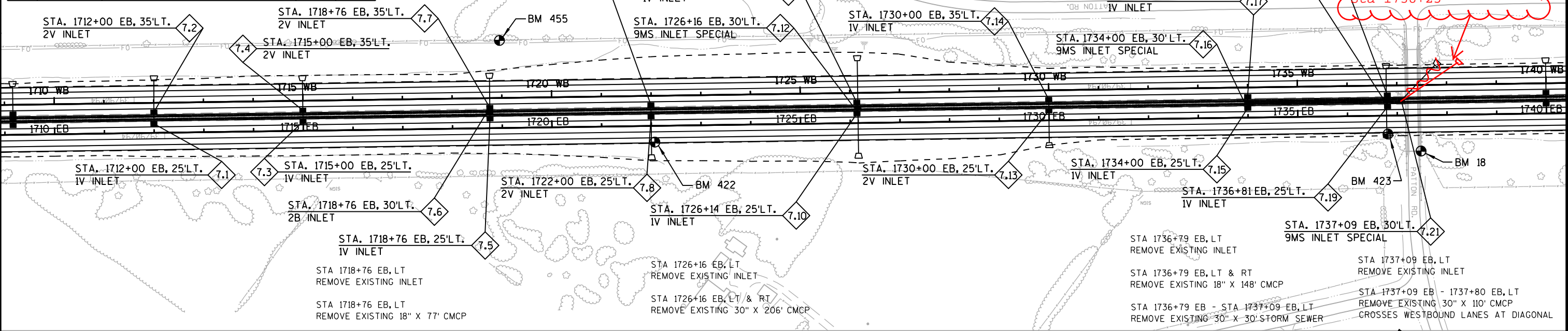
BENCH MARKS

NO.	STATION	DESCRIPTION	OFFSET	ELEV.
420	1667+78±	RR SPIKE BRACE POST, 200± N MM 122	110± RT.	1030.45
421	1699+14±	CHIS X CMCP	71± RT.	1021.94

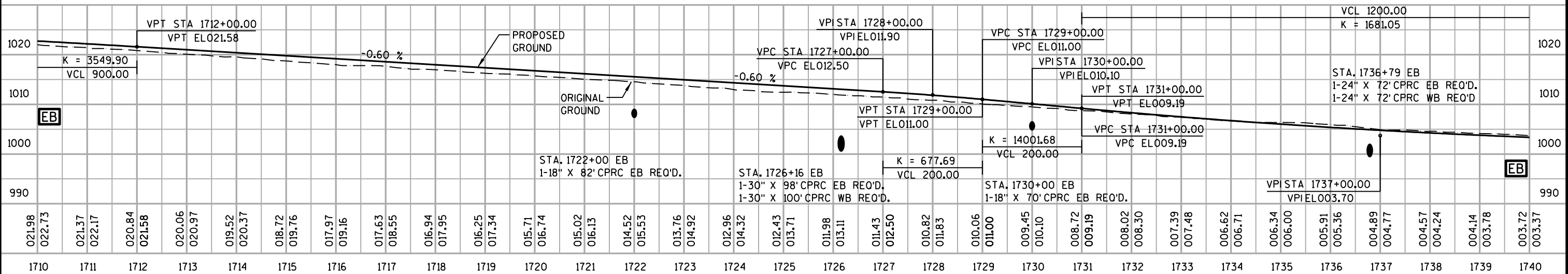
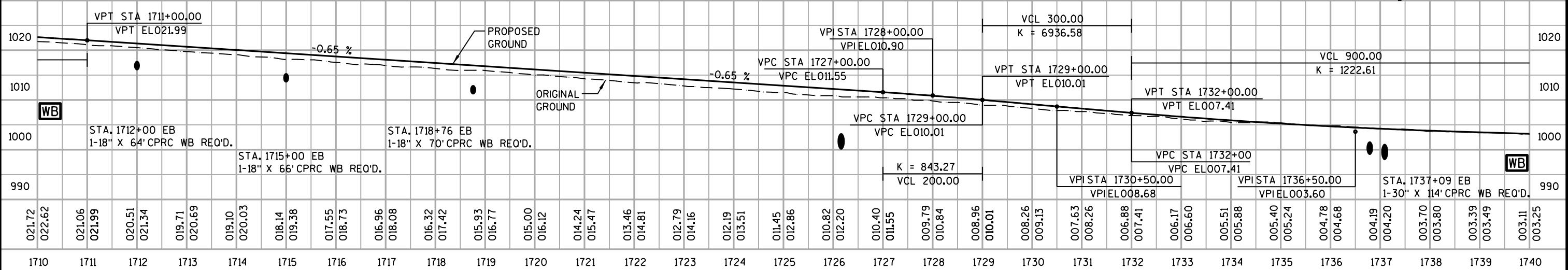


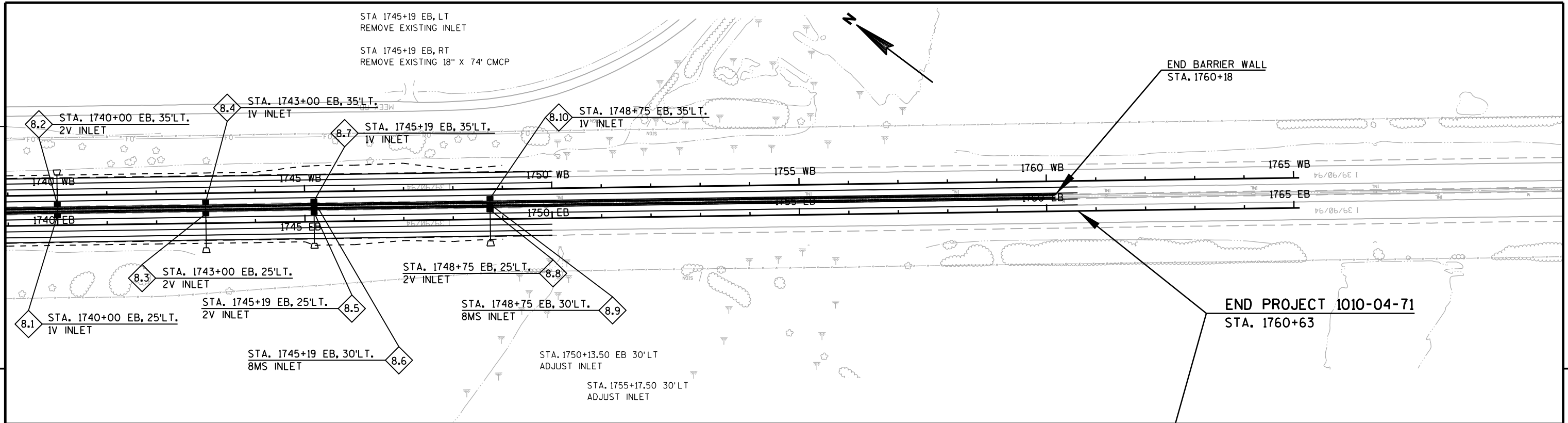
PROJECT NO: 1010-04-71 HWY: IH 39 COUNTY: COLUMBIA DUAL PLAN & PROFILE SHEET **E**

BENCH MARKS				
NO.	STATION	DESCRIPTION	OFFSET	ELEV.
455	1718+06±	RR SPIKE IN BRACE POST	176' LT.	1012.26
422	1722+06±	CHIS SOR CONCRETE SHOULDER	33± RT.	1013.80
423	1736+81±	CHIS X CMCP NEXT TO STRUCTURE	37± RT.	1002.24
18	1737+47±	B-II-018 STRUCTURE DISC	71± RT.	1026.48



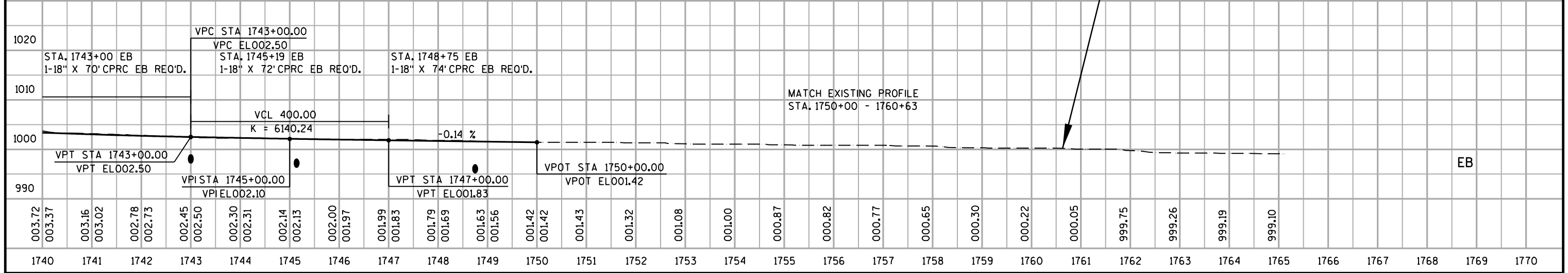
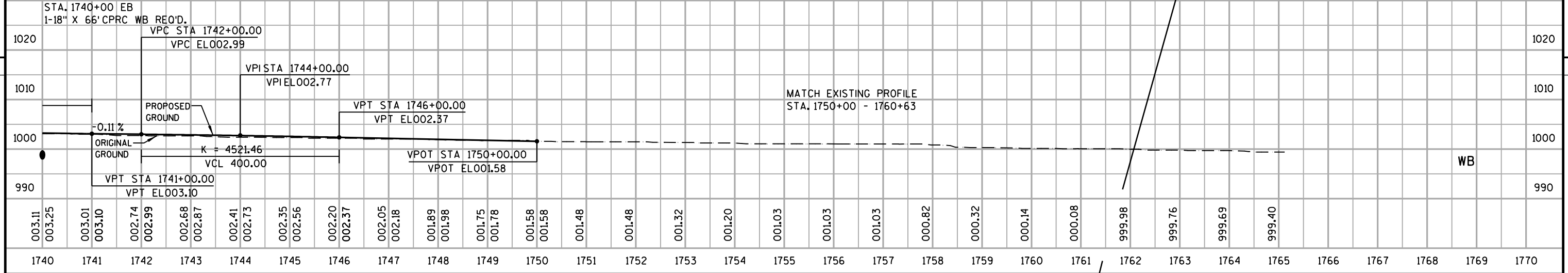
30" x 121' class III
SSPRC with 30-inch
Concrete Apron Endwall
Sta 1738+25





5

5



PROJECT NO: 1010-04-71	HWY: IH 39	COUNTY: COLUMBIA	DUAL PLAN & PROFILE
SHEET			E