

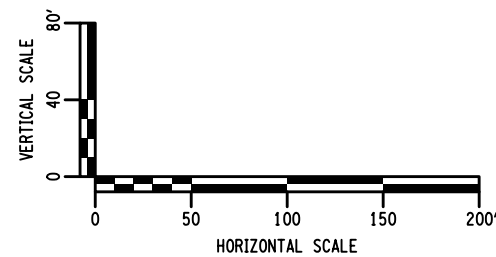
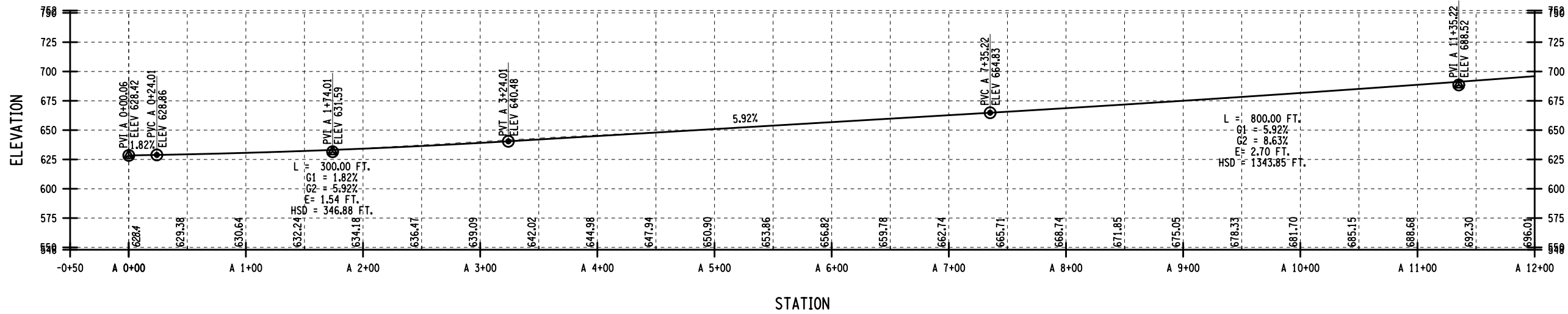
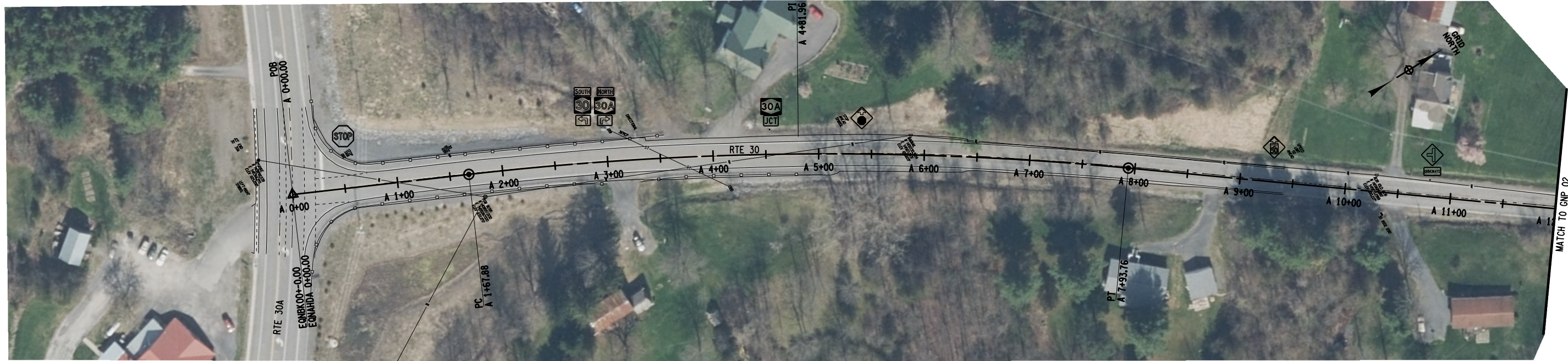


**Highway Factors Group Attachment - Centerline survey data prepared by NYSDOT**

**Schoharie, NY**

**HWY19FH001**

**(6 pages)**



AFFIX SEAL: ON:	ALTERED BY: ON:

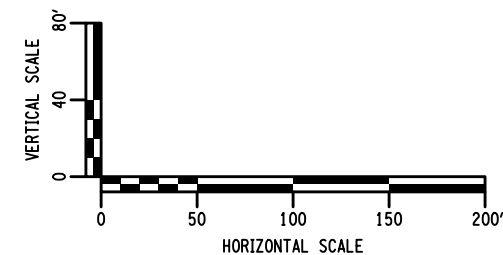
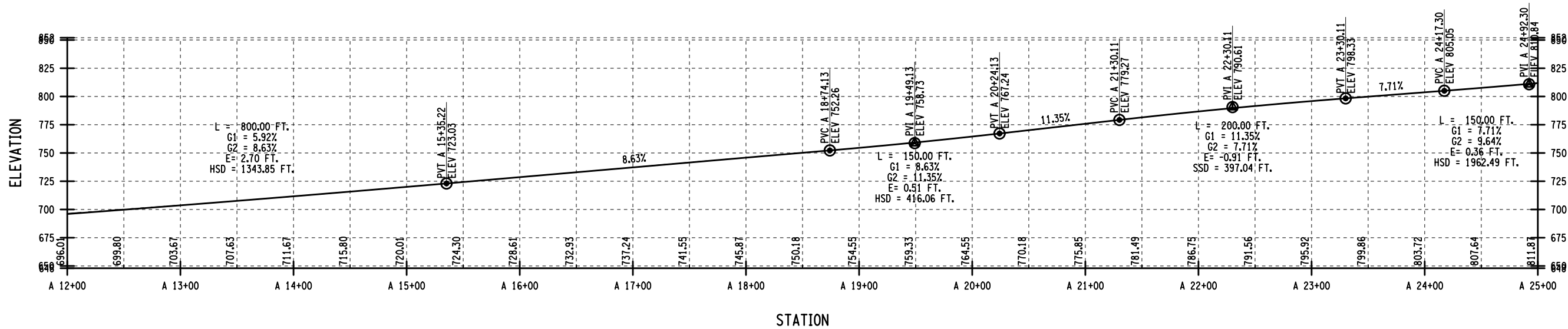
AS-BUILT REVISIONS DESCRIPTION OF ALTERATIONS:
COUNTY: SCHOHARIE      REGION: 09

PIN NY30	BRIDGES	CULVERTS

ALL DIMENSIONS IN FT UNLESS OTHERWISE NOTED	CONTRACT NUMBER
EXISTING GENERAL PLAN RTE 30 AND 30A INTERSECTION	DRAWING NO. GNP_01 SHEET NO.

IT IS A VIOLATION OF LAW FOR ANY PERSON, UNLESS THEY ARE ACTING UNDER THE DIRECTION OF A LICENSED PROFESSIONAL ENGINEER, ARCHITECT, LANDSCAPE ARCHITECT, OR LAND SURVEYOR, TO ALTER AN ITEM IN ANY WAY. IF AN ITEM BEARING THE STAMP OF A LICENSED PROFESSIONAL IS ALTERED, THE ALTERING ENGINEER, ARCHITECT, LANDSCAPE ARCHITECT, OR LAND SURVEYOR SHALL STAMP THE DOCUMENT AND INCLUDE THE NOTATION "ALTERED BY" FOLLOWED BY THEIR SIGNATURE, THE DATE OF SUCH ALTERATION, AND A SPECIFIC DESCRIPTION OF THE ALTERATION.

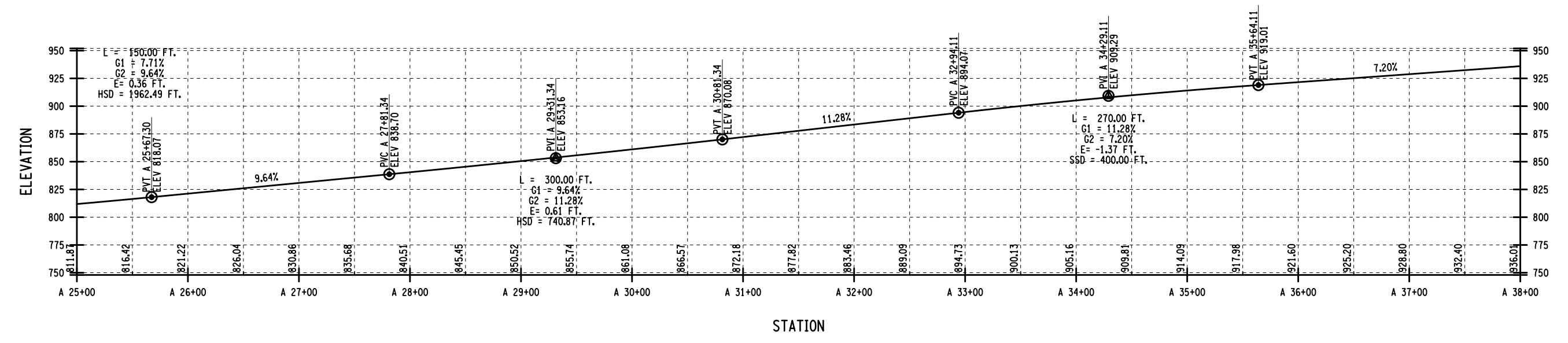




AFFIX SEAL: ON:	ALTERED BY: ON:
AS-BUILT REVISIONS DESCRIPTION OF ALTERATIONS:	

PIN NY30	BRIDGES	CULVERTS	ALL DIMENSIONS IN FT UNLESS OTHERWISE NOTED	CONTRACT NUMBER
COUNTY: SCHOHARIE	REGION: 09	EXISTING GENERAL PLAN RTE 30 AND 30A INTERSECTION		DRAWING NO. GNP_02 SHEET NO.
IT IS A VIOLATION OF LAW FOR ANY PERSON, UNLESS THEY ARE ACTING UNDER THE DIRECTION OF A LICENSED PROFESSIONAL ENGINEER, ARCHITECT, LANDSCAPE ARCHITECT, OR LAND SURVEYOR, TO ALTER AN ITEM IN ANY WAY. IF AN ITEM BEARING THE STAMP OF A LICENSED PROFESSIONAL IS ALTERED, THE ALTERING ENGINEER, ARCHITECT, LANDSCAPE ARCHITECT, OR LAND SURVEYOR SHALL STAMP THE DOCUMENT AND INCLUDE THE NOTATION "ALTERED BY" FOLLOWED BY THEIR SIGNATURE, THE DATE OF SUCH ALTERATION, AND A SPECIFIC DESCRIPTION OF THE ALTERATION.				





MATCH TO GNP 02

MATCH TO GNP 04

PROJECT MANAGER  
CHECK  
DRAFTING  
CHECK  
DESIGN  
JOB MANAGER  
DESIGN SUPERVISOR

FILE NAME = NY30\_30A\_GNP\_03  
DATE/TIME = 20-DEC-2018 08:37  
USER = azebart

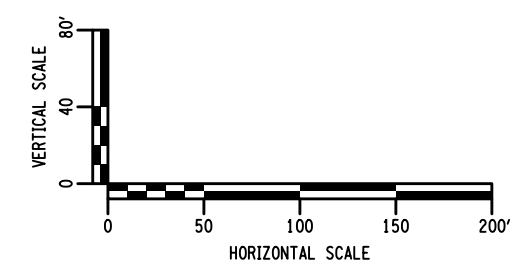
AFFIX SEAL: ON:      ALTERED BY: ON:

AS-BUILT REVISIONS  
DESCRIPTION OF ALTERATIONS:

PIN NY30  
BRIDGES  
CULVERTS  
COUNTY: SCHOHARIE      REGION: 09

ALL DIMENSIONS IN FT UNLESS OTHERWISE NOTED  
EXISTING GENERAL PLAN  
RTE 30 AND 30A INTERSECTION

CONTRACT NUMBER  
DRAWING NO. GNP\_03  
SHEET NO.



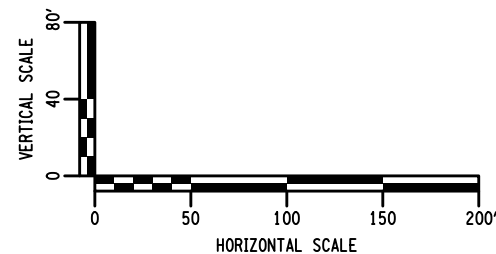
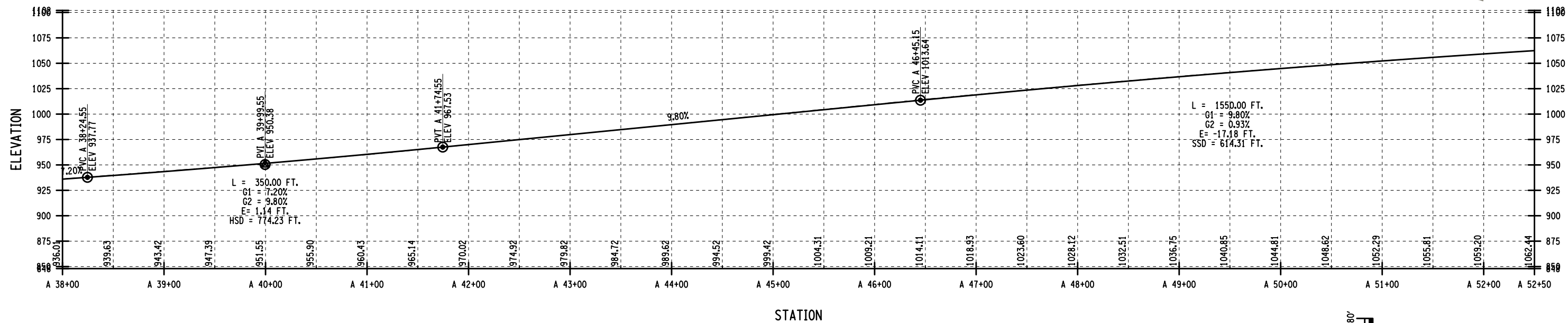
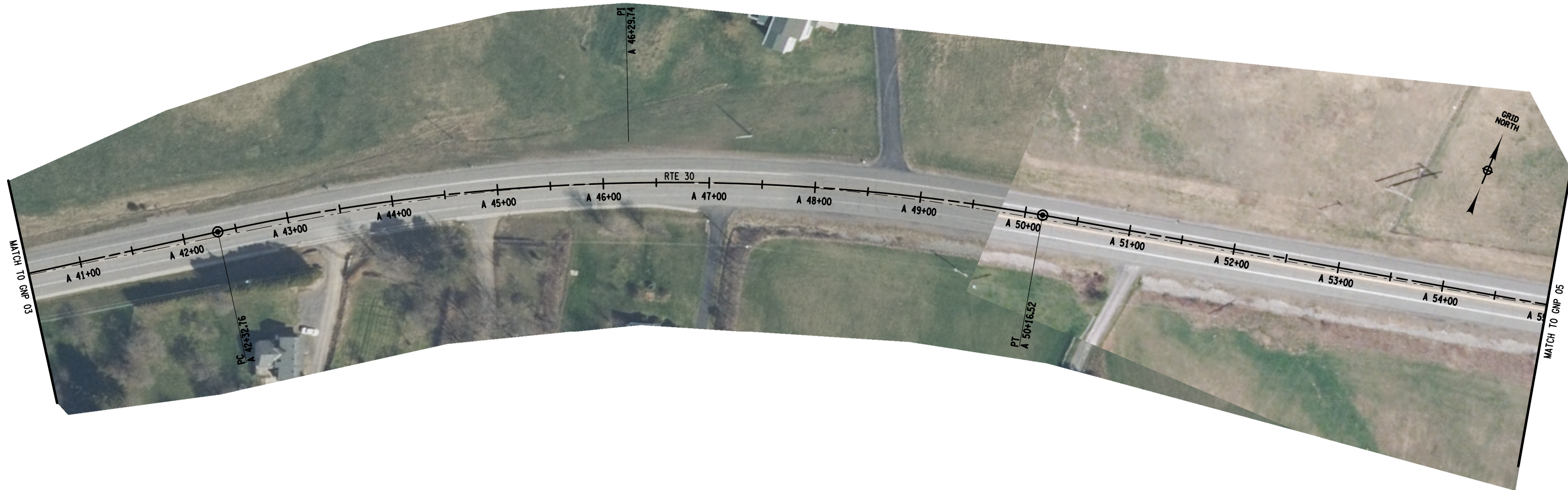
IT IS A VIOLATION OF LAW FOR ANY PERSON, UNLESS THEY ARE ACTING UNDER THE DIRECTION OF A LICENSED PROFESSIONAL ENGINEER, ARCHITECT, LANDSCAPE ARCHITECT, OR LAND SURVEYOR, TO ALTER AN ITEM IN ANY WAY. IF AN ITEM BEARING THE STAMP OF A LICENSED PROFESSIONAL IS ALTERED, THE ALTERING ENGINEER, ARCHITECT, LANDSCAPE ARCHITECT, OR LAND SURVEYOR SHALL STAMP THE DOCUMENT AND INCLUDE THE NOTATION "ALTERED BY" FOLLOWED BY THEIR SIGNATURE, THE DATE OF SUCH ALTERATION, AND A SPECIFIC DESCRIPTION OF THE ALTERATION.





FILE NAME = NY30\_30A\_GNP\_04  
 DATE/TIME = 20-DEC-2018 08:37  
 USER = azebart

DESIGN SUPERVISOR  
 JOB MANAGER  
 DESIGN  
 CHECK  
 DRAFTING  
 CHECK  
 PROJECT MANAGER



AFFIX SEAL: ON:	ALTERED BY: ON:
AS-BUILT REVISIONS DESCRIPTION OF ALTERATIONS:	

PIN NY30	BRIDGES	CULVERTS	ALL DIMENSIONS IN FT UNLESS OTHERWISE NOTED	CONTRACT NUMBER
COUNTY: SCHOHARIE	REGION: 09	EXISTING GENERAL PLAN RTE 30 AND 30A INTERSECTION		DRAWING NO. GNP_04
				SHEET NO.

IT IS A VIOLATION OF LAW FOR ANY PERSON, UNLESS THEY ARE ACTING UNDER THE DIRECTION OF A LICENSED PROFESSIONAL ENGINEER, ARCHITECT, LANDSCAPE ARCHITECT, OR LAND SURVEYOR, TO ALTER AN ITEM IN ANY WAY. IF AN ITEM BEARING THE STAMP OF A LICENSED PROFESSIONAL IS ALTERED, THE ALTERING ENGINEER, ARCHITECT, LANDSCAPE ARCHITECT, OR LAND SURVEYOR SHALL STAMP THE DOCUMENT AND INCLUDE THE NOTATION "ALTERED BY" FOLLOWED BY THEIR SIGNATURE, THE DATE OF SUCH ALTERATION, AND A SPECIFIC DESCRIPTION OF THE ALTERATION.





FILE NAME = NY30\_30A\_GNP\_05  
 DATE/TIME = 20-DEC-2018 08:38  
 USER = azebart

PROJECT MANAGER

CHECK

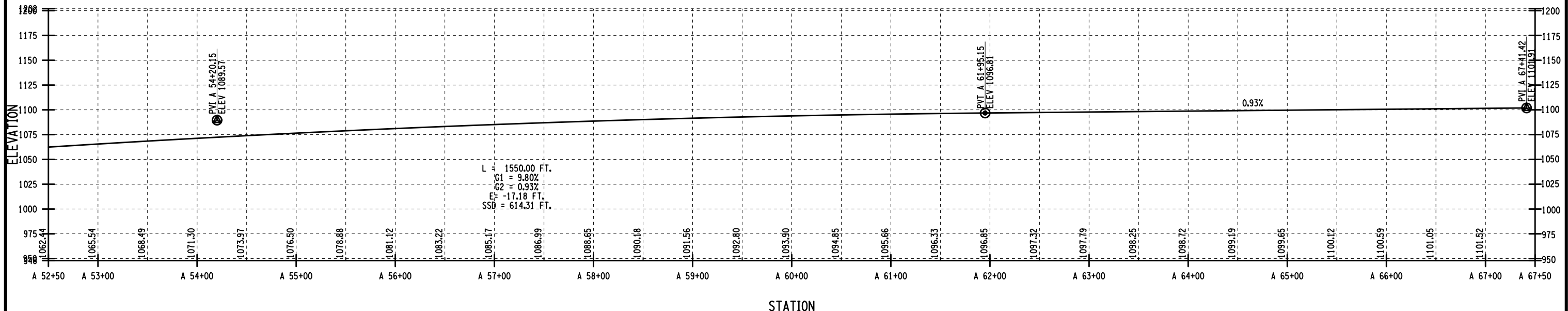
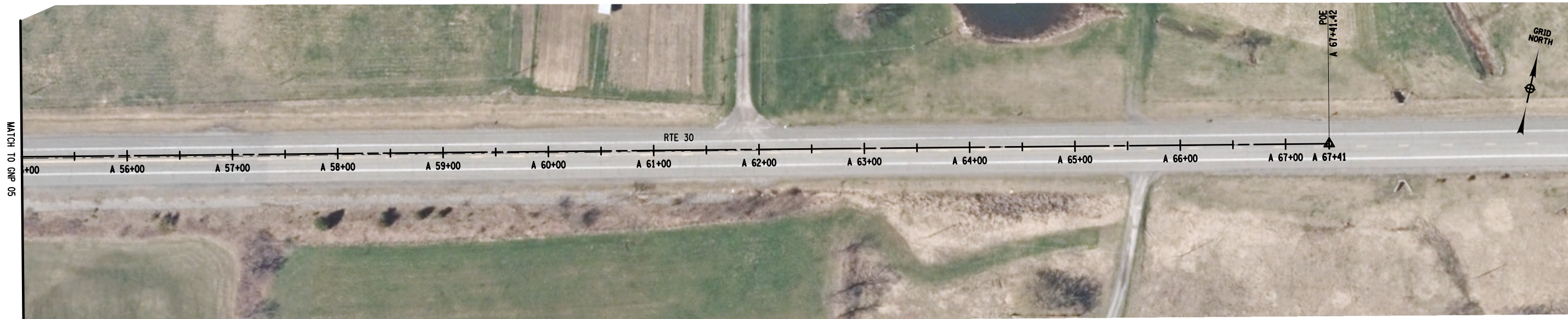
DRAFTING

CHECK

DESIGN

JOB MANAGER

DESIGN SUPERVISOR



AFFIX SEAL: ON:	ALTERED BY: ON:
AS-BUILT REVISIONS DESCRIPTION OF ALTERATIONS:	

PIN NY30	BRIDGES	CULVERTS	ALL DIMENSIONS IN FT UNLESS OTHERWISE NOTED	CONTRACT NUMBER
COUNTY: SCHOHARIE	REGION: 09	EXISTING GENERAL PLAN RTE 30 AND 30A INTERSECTION		DRAWING NO. GNP_05 SHEET NO.

IT IS A VIOLATION OF LAW FOR ANY PERSON, UNLESS THEY ARE ACTING UNDER THE DIRECTION OF A LICENSED PROFESSIONAL ENGINEER, ARCHITECT, LANDSCAPE ARCHITECT, OR LAND SURVEYOR, TO ALTER AN ITEM IN ANY WAY. IF AN ITEM BEARING THE STAMP OF A LICENSED PROFESSIONAL IS ALTERED, THE ALTERING ENGINEER, ARCHITECT, LANDSCAPE ARCHITECT, OR LAND SURVEYOR SHALL STAMP THE DOCUMENT AND INCLUDE THE NOTATION "ALTERED BY" FOLLOWED BY THEIR SIGNATURE, THE DATE OF SUCH ALTERATION, AND A SPECIFIC DESCRIPTION OF THE ALTERATION.

