



Highway Attachment -Design Plans

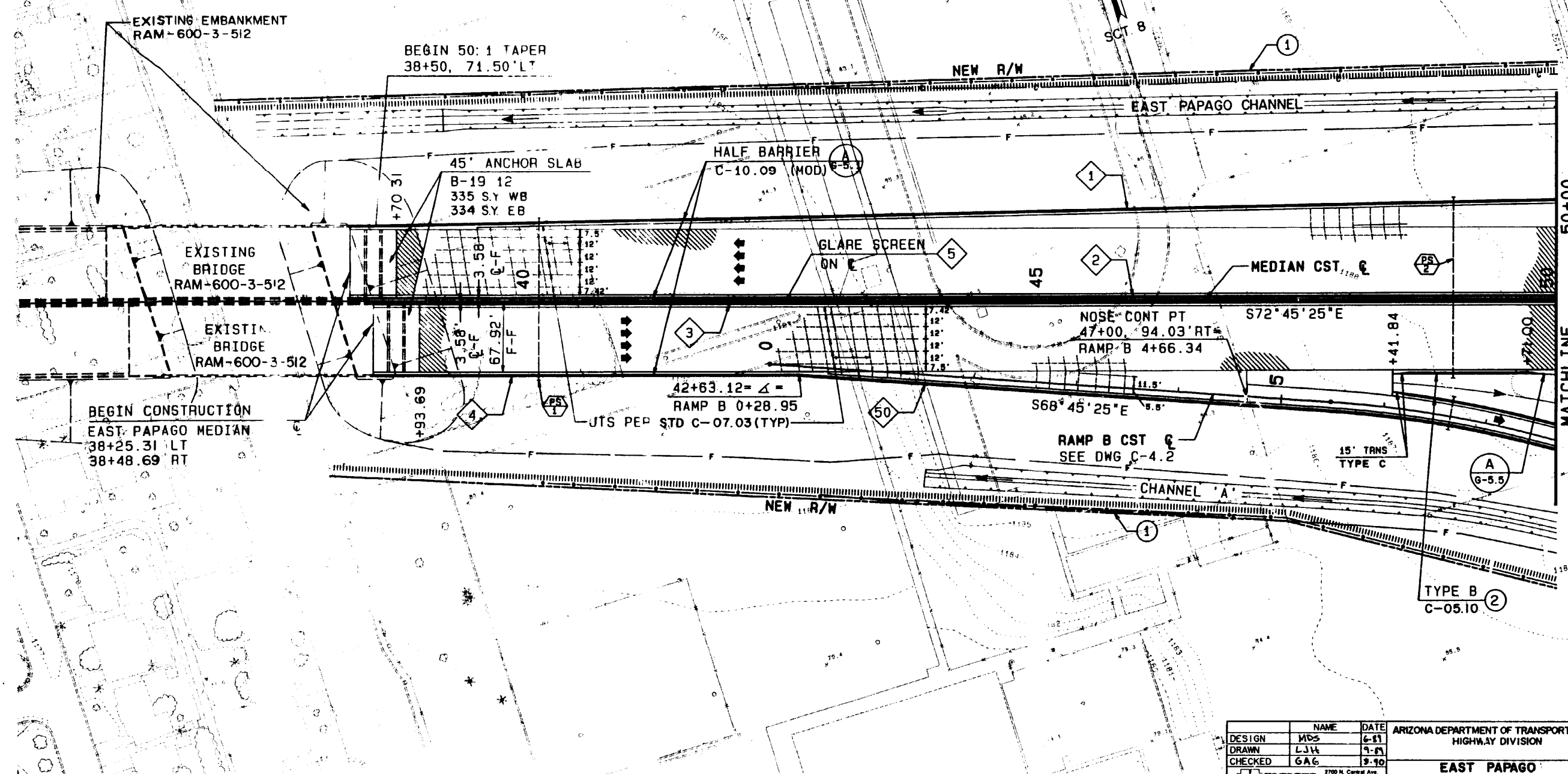
Phoenix, Arizona

HWY21MH008

(15 pages)

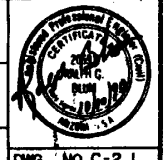
F.H.W.A. REGION	STATE	PROJECT NO.	SHEET NO.	TOTAL SHEETS	AS BUILT
	ARIZ.	RAM-600-5-509	67	622	7/3/94 KL
		202L MA 4			

- NOTES:
- ① FENCING AND R/W MARKERS SHOWN ON DWG C-8.1
 - ② SEE CURB & GUTTER SUMMARY, DWG G-4.17
 - ③ SEE PIPE SLEEVE SUMMARY, DWG G-4.20
 - ④ SEE BARRIER SUMMARY, DWG G-4.18

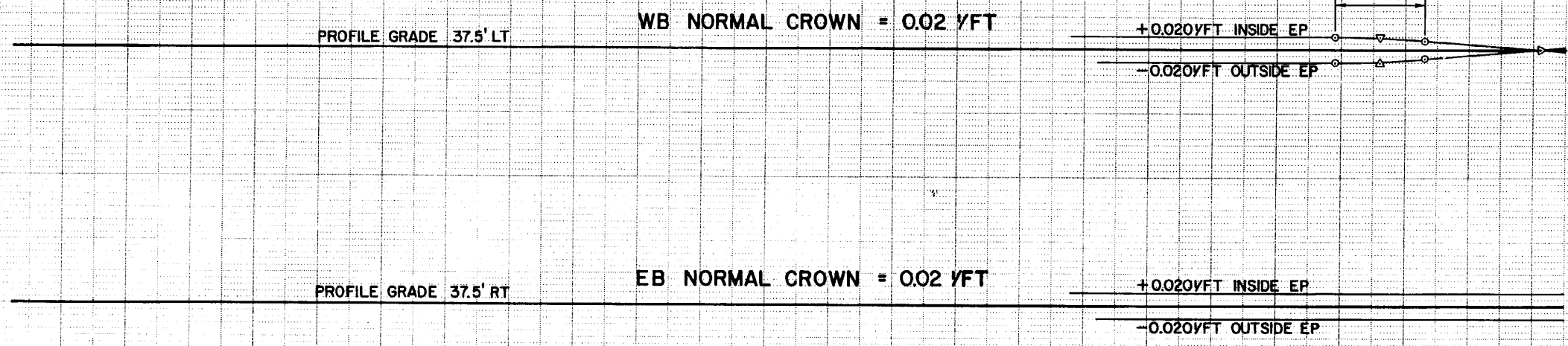


DATE	
LOCATION	
REVISIONS	
DESIGNED PLANS	

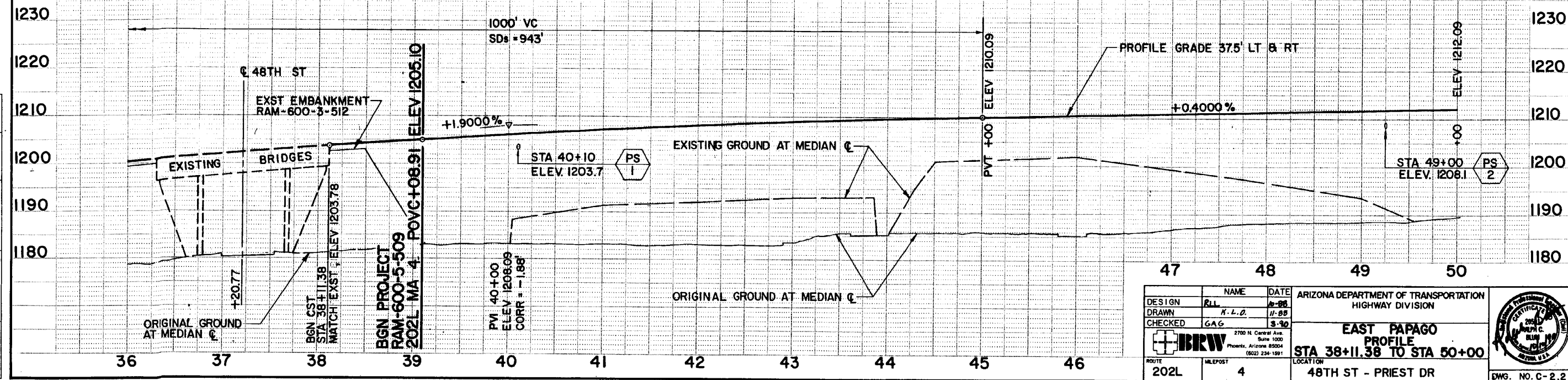
DESIGN: MDS 6-81 DRAWN: LJT 9-81 CHECKED: GAG 9-90		ARIZONA DEPARTMENT OF TRANSPORTATION HIGHWAY DIVISION	
BRW 2700 N. Central Ave. Suite 1000 Phoenix, Arizona 85004 (602) 234-1991		EAST PAPAGO PAVING PLAN STA 38+08.91 TO STA 50+00	
ROUTE: 202L	MILEPOST: 4	LOCATION: 48TH ST - PRIEST DR	DWG. NO. C-2.1
TRACS NO. H 0950 C1C		RAM 600-5-509 SHT 67 of 622	67 OF 622



F.H.R.A. REGION	STATE	PROJECT NO.	SHEET NO.	TOTAL SHEETS	AS BUILT
ARIZ.	RAM-600-5-509	68	622	2/5/94	KL
202L MA 4					



B.M. ELEV 1196.1678
CITY OF PHOENIX B.C. IN H.H.
48TH STREET AND MEADOWELL ROAD

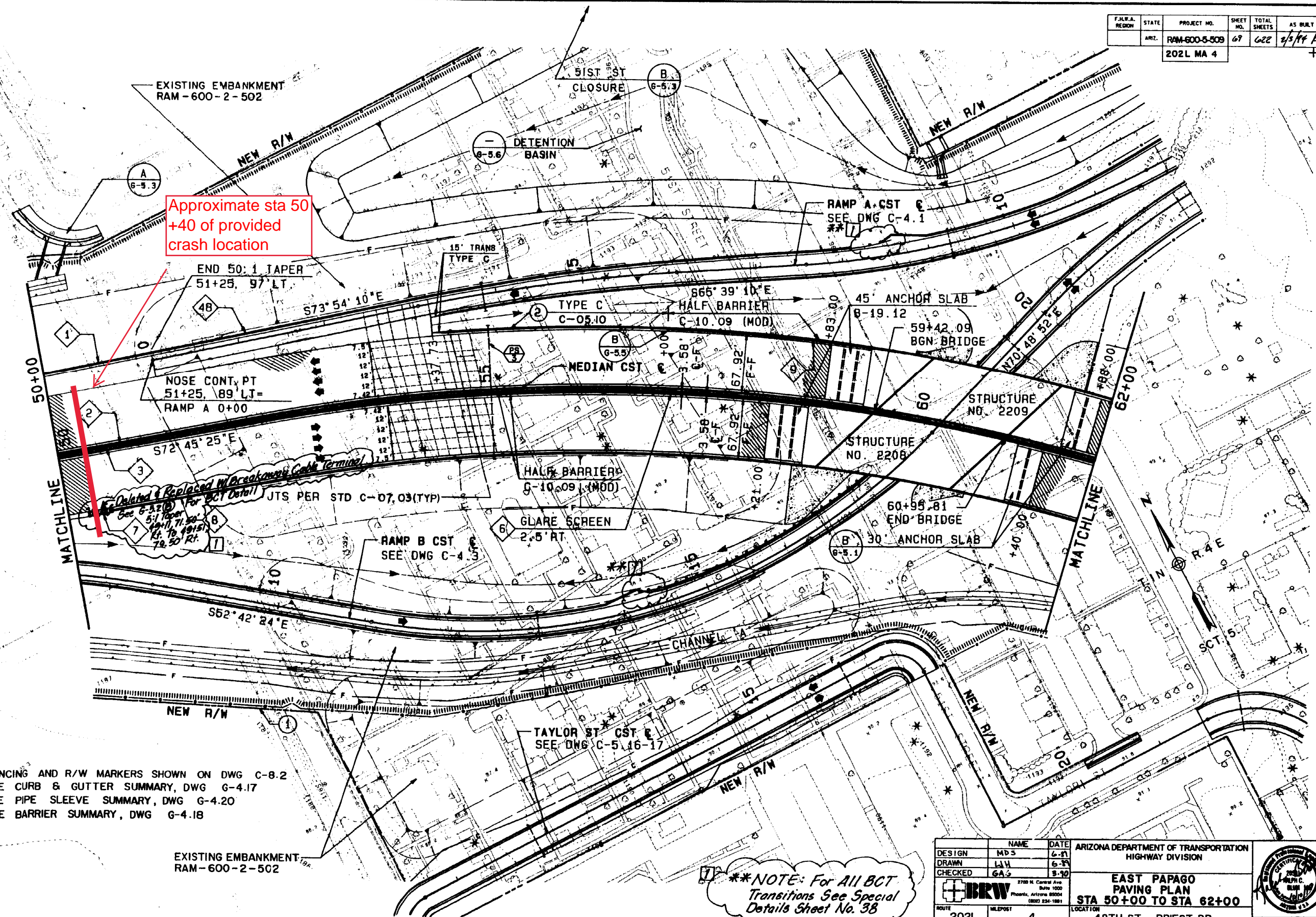


DATE	
LOCATION	
REVISIONS	
NO.	
DESCRIPTION	
DATE	

DESIGN	NAME	DATE	ARIZONA DEPARTMENT OF TRANSPORTATION HIGHWAY DIVISION
DRAWN	ALL	10-88	
CHECKED	GAG	3-90	
			EAST PAPAGO PROFILE STA 38+11.38 TO STA 50+00 48TH ST - PRIEST DR
ROUTE	MILEPOST	LOCATION	
202L	4		DWG. NO. C-2.2

TRACS NO. H 0860 OIC RAM 600-5-509 SHT 68 of 622 68 OF 622

F.H.W.A. REGION	STATE	PROJECT NO.	SHEET NO.	TOTAL SHEETS	AS BUILT
ARIZ.		RAM-600-5-509	67	622	2/5/14 K
		202L MA 4			



Approximate sta 50+40 of provided crash location

Deleted & Replaced by Breakaway Cable Terminal
 See 6-3.2 (b) For BCT Detail
 See 6-3.2 (b) 5:1 Taper
 Rt. 10, 19.50'
 Rt. 50, 79.50' Rt.

****NOTE: For All BCT Transitions See Special Details Sheet No. 38**

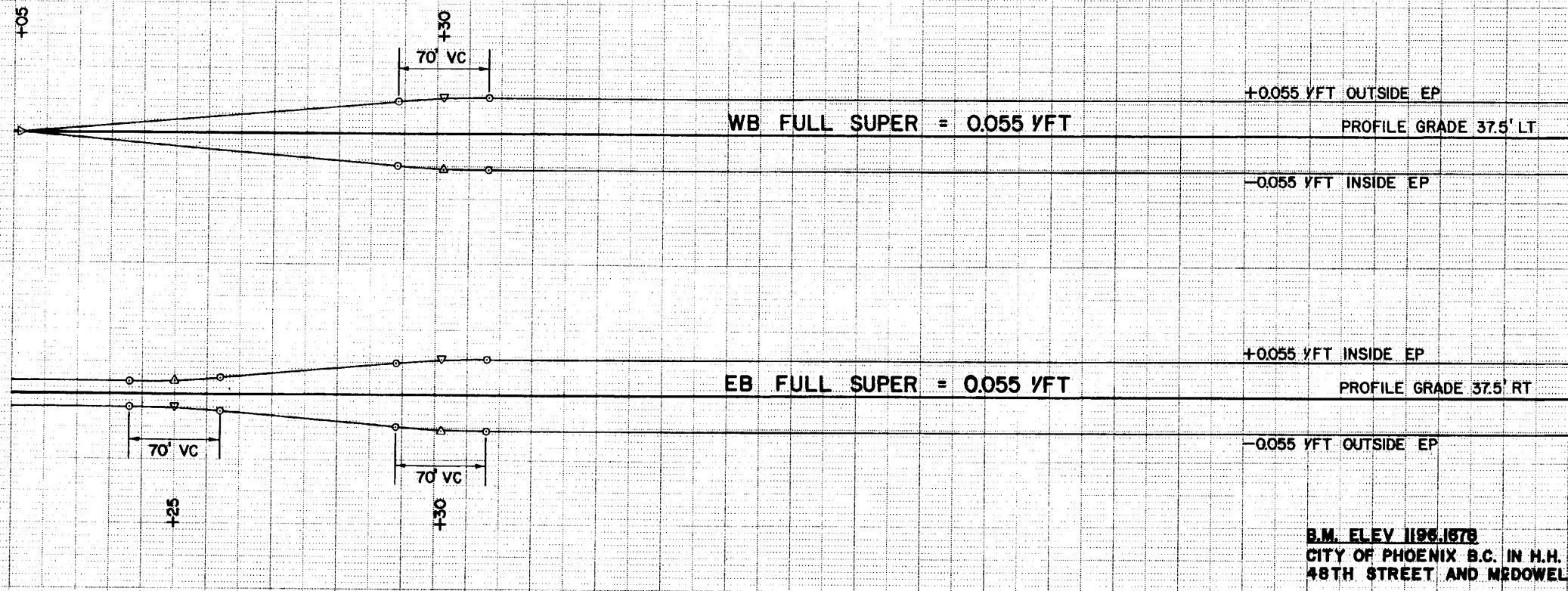
- NOTES:
- ① FENCING AND R/W MARKERS SHOWN ON DWG C-8.2
 - ② SEE CURB & GUTTER SUMMARY, DWG G-4.17
 - ③ SEE PIPE SLEEVE SUMMARY, DWG G-4.20
 - ④ SEE BARRIER SUMMARY, DWG G-4.18

EXISTING EMBANKMENT
RAM-600-2-502

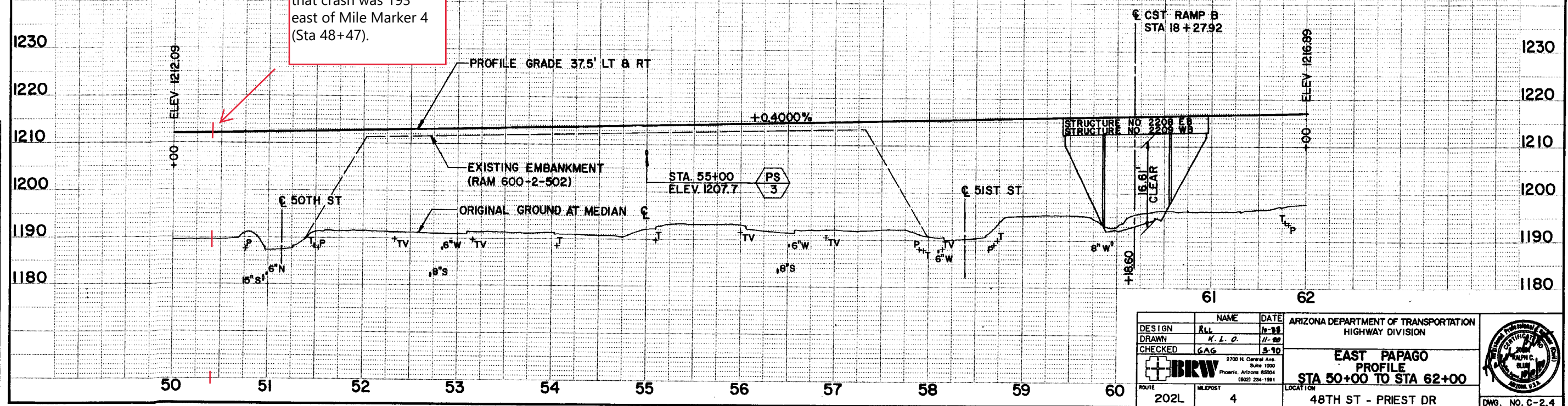
DESIGN	MD S	DATE	6-8	ARIZONA DEPARTMENT OF TRANSPORTATION HIGHWAY DIVISION
DRAWN	LWH	DATE	6-8	
CHECKED	GA S	DATE	9-10	
		2700 N. Central Ave. Suite 1000 Phoenix, Arizona 85004 (602) 234-1991		EAST PAPAGO PAVING PLAN STA 50+00 TO STA 62+00 48TH ST - PRIEST DR DWG. NO. C-2.3
ROUTE	202L	MILEPOST	4	
TRACS NO. H C860 OIC			RAM 600-5-509 347 69 of 622	67 OF 622

DATE	
LOCATION	AS-BUILT
REVISION	
NO.	
DESCRIPTION	

F.H.W.A. REGION	STATE	PROJECT NO.	SHEET NO.	TOTAL SHEETS	AS BUILT
	ARIZ.	RAM-600-5-509	70	622	2/5/99 EK
		202L MA 4			



Crash location is 50+40 based on supplied data that crash was 193' east of Mile Marker 4 (Sta 48+47).



NO.	REVISED PLANS	LOCATION	DATE

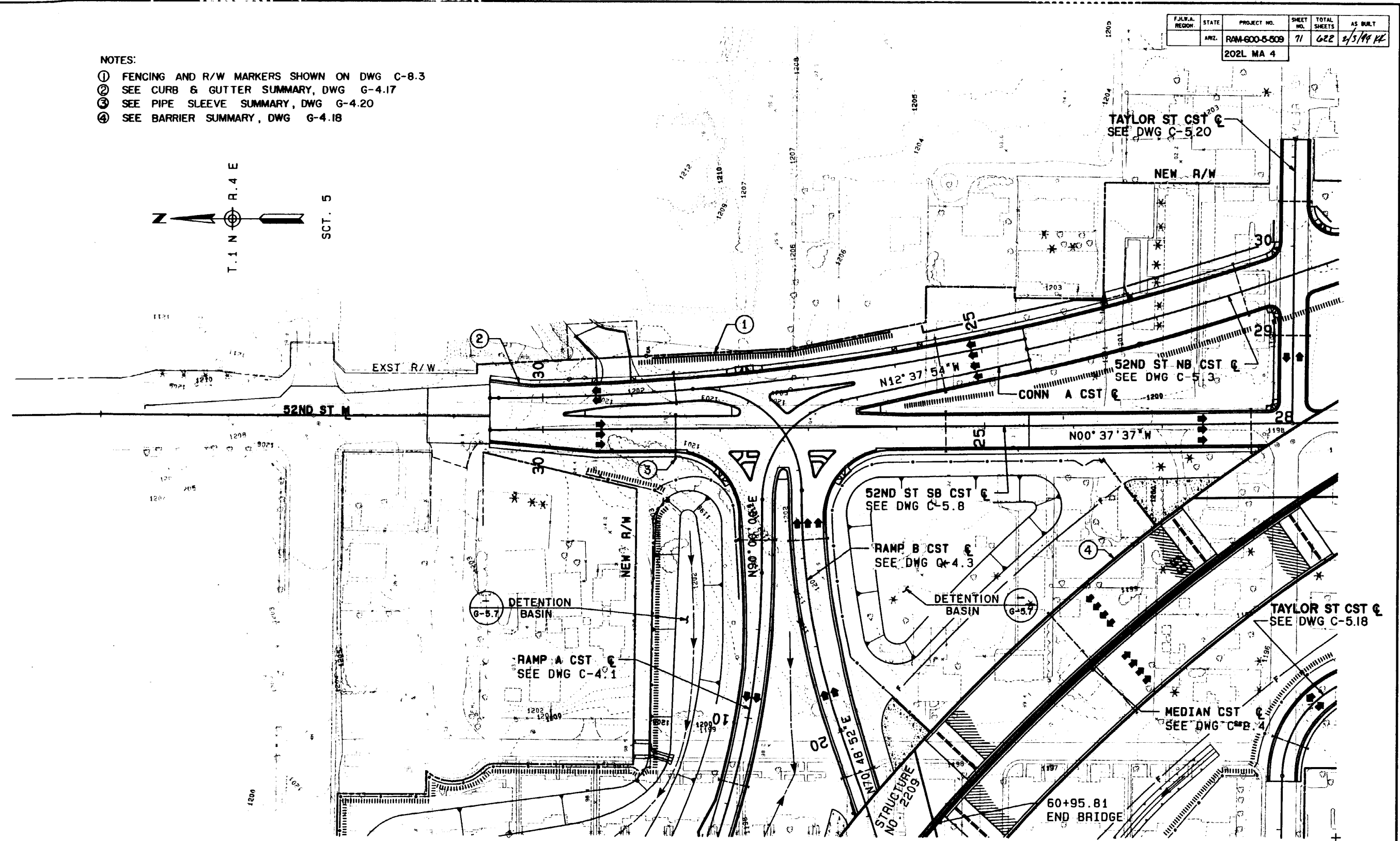
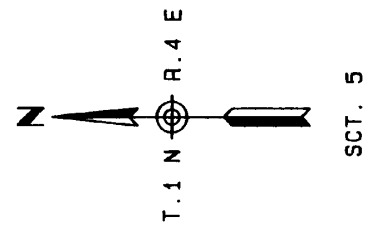
DESIGN	NAME	DATE	ARIZONA DEPARTMENT OF TRANSPORTATION HIGHWAY DIVISION
DRAWN	K. L. O.	11-99	
CHECKED	GAG	3-10	
			EAST PAPAGO PROFILE STA 50+00 TO STA 62+00
ROUTE	MILEPOST	LOCATION	
202L	4	48TH ST - PRIEST DR	DWG. NO. C-2.4

TRACS NO. H0860 OIC
 RAM 600-5-509
 SHT 70 of 622
 70 OF 622

F.H.R.A. REGION	STATE	PROJECT NO.	SHEET NO.	TOTAL SHEETS	AS BUILT
	ARIZ.	RAM-600-5-509	71	622	2/5/99 KZ
202L MA 4					

NOTES:

- ① FENCING AND R/W MARKERS SHOWN ON DWG C-8.3
- ② SEE CURB & GUTTER SUMMARY, DWG G-4.17
- ③ SEE PIPE SLEEVE SUMMARY, DWG G-4.20
- ④ SEE BARRIER SUMMARY, DWG G-4.18



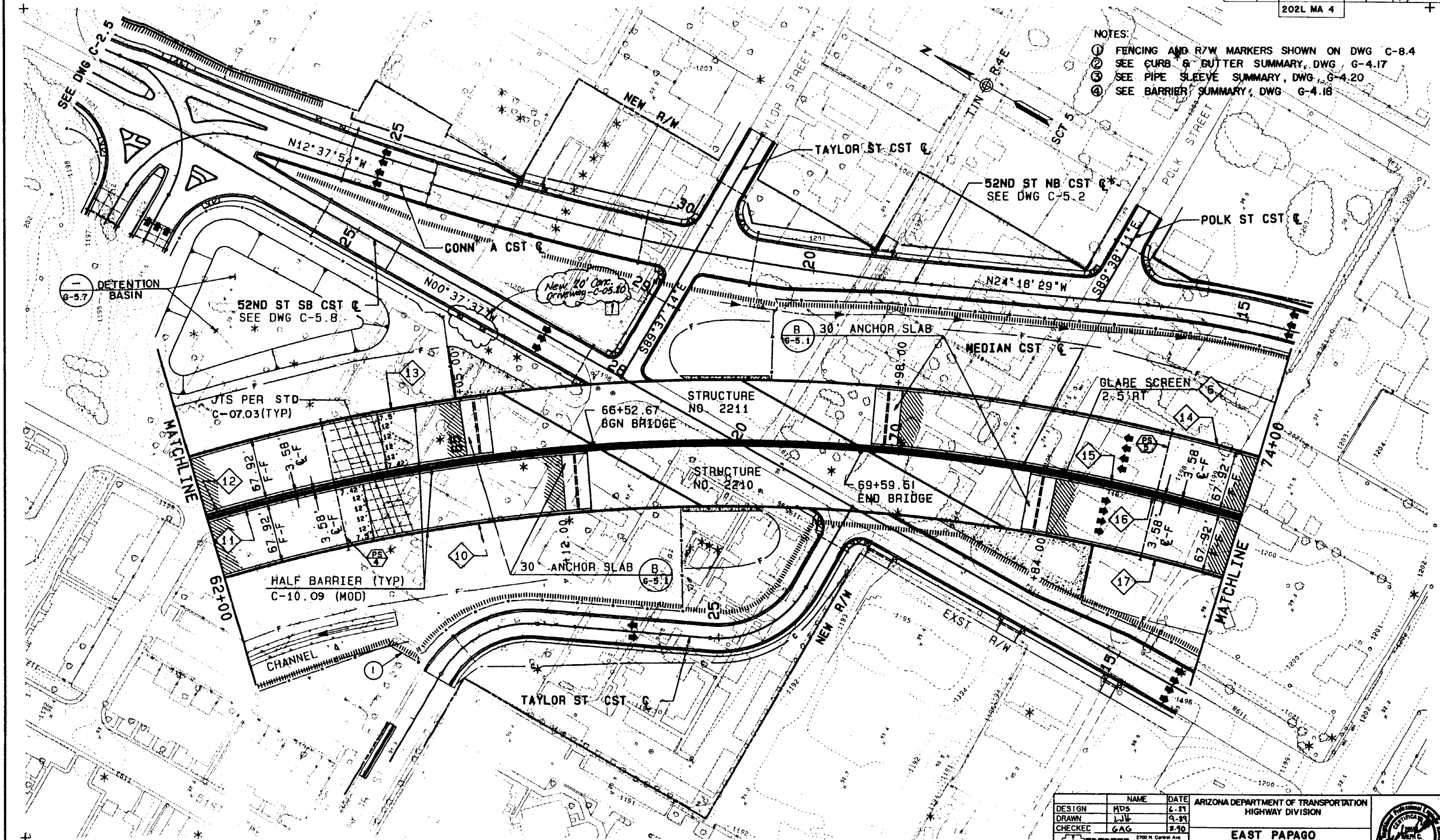
DATE	
LOCATION	
REVISIONS	
DESIGNED PLANS	

DESIGN	MDS	DATE	6-97	ARIZONA DEPARTMENT OF TRANSPORTATION HIGHWAY DIVISION	
DRAWN	WJK	DATE	9-97		
CHECKED	SAG	DATE	2-98		
				EAST PAPAGO AREA LEFT OF STA 61+00 TO STA 66+00	
ROUTE	202L	MILEPOST	4		LOCATION 48TH ST - PRIEST DR
TRACS NO H 0860 OIC				RAM 600-5-509 SHEET 71 of 622	DWG. NO. C-2.5 71 OF 622





F.H.W.A. REGION	STATE	PROJECT NO.	SHEET NO.	TOTAL SHEETS	AS BUILT
	ARIZ.	RAM-600-5-509	72	622	2/13/99 KK
202L MA 4					

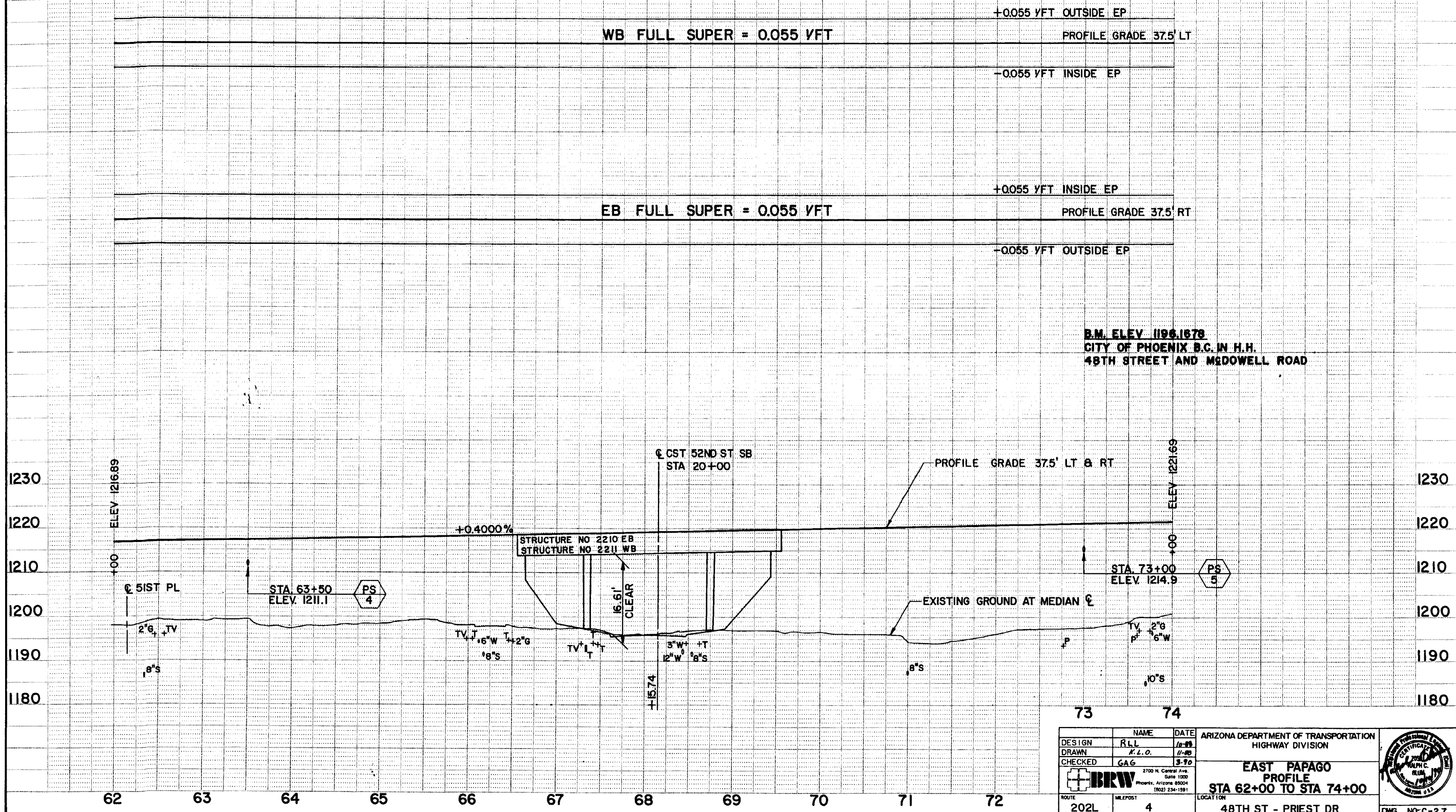
- NOTES:
- ① FENCING AND R/W MARKERS SHOWN ON DWG C-8.4
 - ② SEE CURB & GUTTER SUMMARY, DWG G-4.17
 - ③ SEE PIPE SLEEVE SUMMARY, DWG G-4.20
 - ④ SEE BARRIER SUMMARY, DWG G-4.18



NO.	REVISED PLAN	LOCATION	DATE
1	AS BUILT		

DESIGN	MPD	DATE	4-87	ARIZONA DEPARTMENT OF TRANSPORTATION HIGHWAY DIVISION
DRAWN	LJL	DATE	9-87	
CHECKED	GAG	DATE	2-90	
 2700 N. Central Ave. Suite 1029 Phoenix, Arizona 85004 (602) 234-1881				
ROUTE	MILEPOST	LOCATION	EAST PAPAGO PAVING PLAN STA 62+00 TO STA 74+00	
202L	4	48TH ST - PRIEST DR		DWG. NO. C-2.6

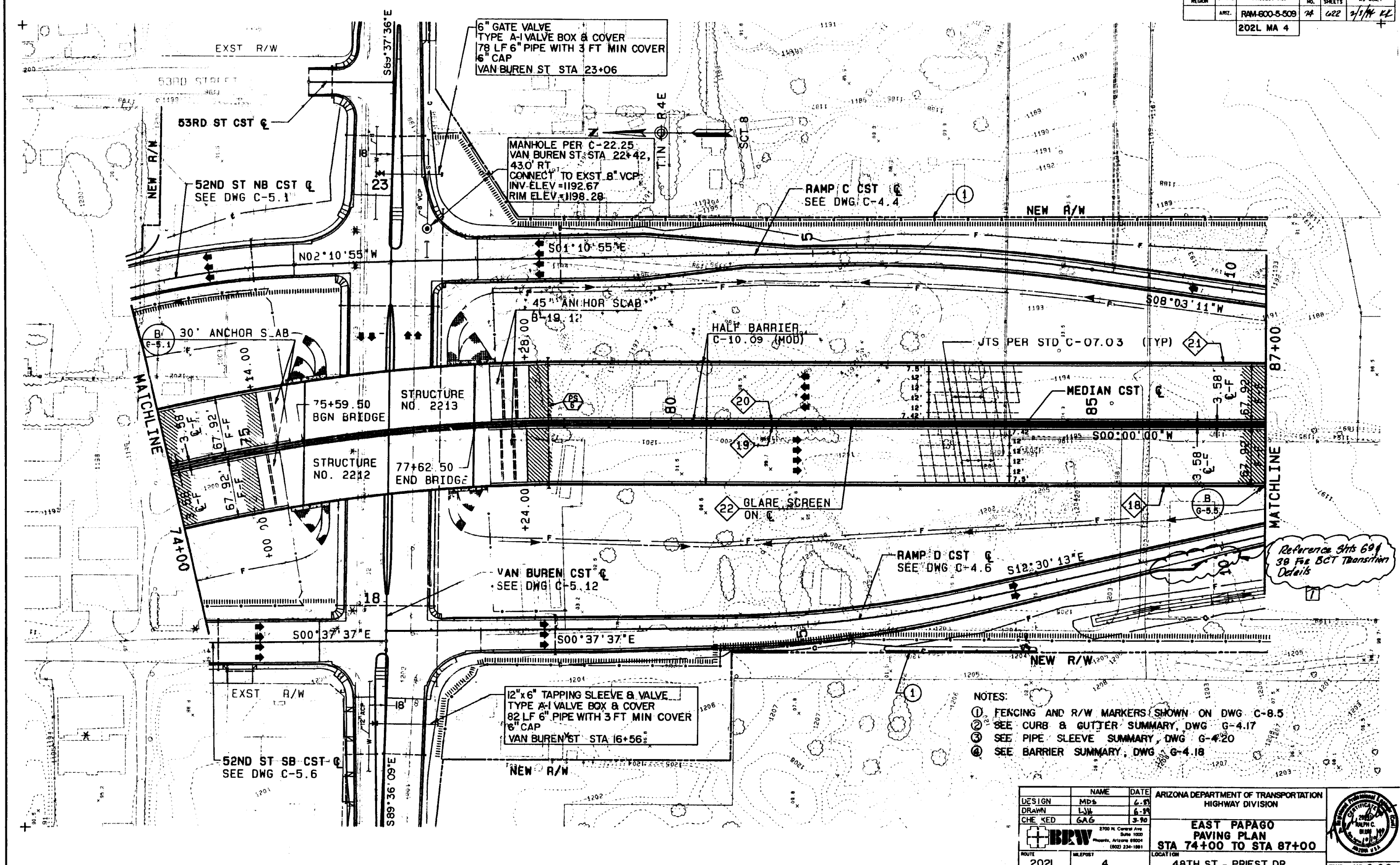
F.H.W.A. REGION	STATE	PROJECT NO.	SHEET NO.	TOTAL SHEETS	AS BUILT
	ARIZ.	RAM-600-5-509	73	622	2/5/94 KL
202L MA 4					



NO.	PROPOSED PLANS	REVISIONS	DATE

DESIGN	NAME	DATE	ARIZONA DEPARTMENT OF TRANSPORTATION HIGHWAY DIVISION
DRAWN	ALL	12-98	
CHECKED	K.L.O.	11-98	
			EAST PAPAGO PROFILE STA 62+00 TO STA 74+00
ROUTE	MI. POST	LOCATION	
202L	4	48TH ST - PRIEST DR	
TRACS NO. H 0860 OIC			DWG. NO: C-2.7 RAM 600-5-509 SHEET 73 OF 622

F.H.W.A. REGION	STATE	PROJECT NO.	SHEET NO.	TOTAL SHEETS	AS BUILT
	ARIZ.	RAM-600-5-509	74	622	2/5/14 KL
202L MA 4					



6" GATE VALVE
TYPE A-1 VALVE BOX & COVER
78 LF 6" PIPE WITH 3 FT MIN COVER
6" CAP
VAN BUREN ST STA 23+06

MANHOLE PER C-22.25
VAN BUREN ST STA 22+42,
43.0' RT
CONNECT TO EXST. 8" VCP
INV. ELEV = 1192.67
RIM ELEV = 1198.28

RAMP C CST
SEE DWG C-4.4

52ND ST NB CST
SEE DWG C-5.1

53RD ST CST

N02°10'55"W

S01°10'55"E

NEW R/W

MATCHLINE

MATCHLINE

75+59.50
BGN BRIDGE
STRUCTURE NO. 2213

77+62.50
END BRIDGE
STRUCTURE NO. 2212

HALF BARRIER
C-10.09 (MOD)

JTS PER STD C-07.03 (TYP)

MEDIAN CST
65

GLARE SCREEN
ON C

RAMP D CST
SEE DWG C-4.6

VAN BUREN CST
SEE DWG C-5.12

52ND ST SB CST
SEE DWG C-5.6

12" x 6" TAPPING SLEEVE & VALVE
TYPE A-1 VALVE BOX & COVER
82 LF 6" PIPE WITH 3 FT MIN COVER
6" CAP
VAN BUREN ST STA 16+56

NOTES:

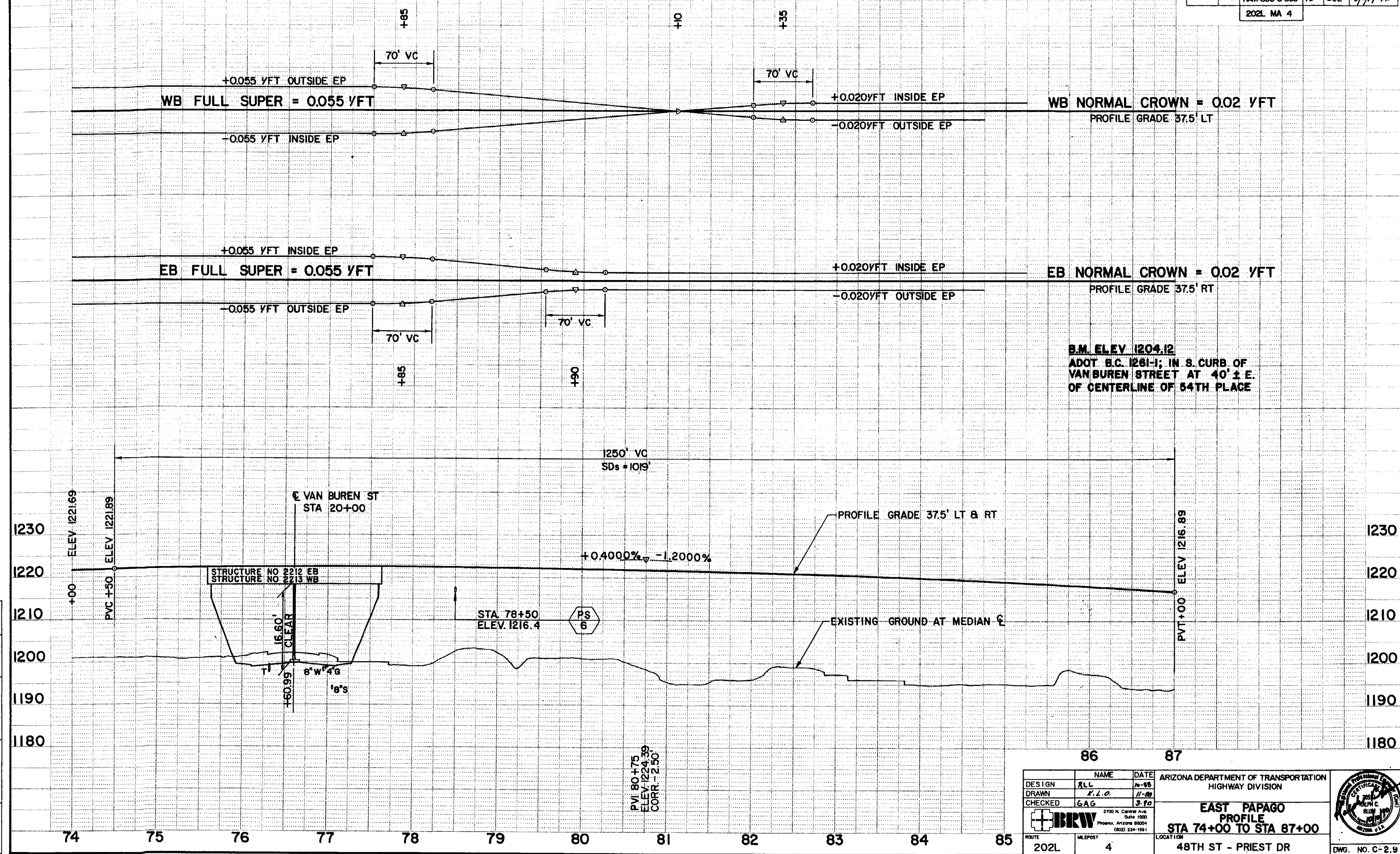
- ① FENCING AND R/W MARKERS SHOWN ON DWG C-8.5
- ② SEE CURB & GUTTER SUMMARY, DWG G-4.17
- ③ SEE PIPE SLEEVE SUMMARY, DWG G-4.20
- ④ SEE BARRIER SUMMARY, DWG G-4.18

Reference A16 694
38 For BCT Transition
Details

NO.	REVISION	DATE
1	AS-BUILT	

DESIGN	NAME	DATE	ARIZONA DEPARTMENT OF TRANSPORTATION HIGHWAY DIVISION
DRAWN	LJW	6-19	
CHEKED	GAG	3-90	
			EAST PAPAGO PAVING PLAN STA 74+00 TO STA 87+00
ROUTE	LOCATION		
202L	4		

F.H.W.A. REGION	STATE	PROJECT NO.	SHEET NO.	TOTAL SHEETS	AS BUILT
ARIZ.	RAM-600-5-509	75	622	2/1/74 RL	
202L MA 4					



B.M. ELEV. 1204.12
 ADOT B.C. 1261-1; IN S. CURB OF
 VAN BUREN STREET AT 40' ± E.
 OF CENTERLINE OF 54TH PLACE

NO.	FINISHED PLANS	REVISIONS	LOCATION	DATE

DESIGN	NAME	DATE	ARIZONA DEPARTMENT OF TRANSPORTATION HIGHWAY DIVISION
DRAWN	R.L.C.	11-88	
CHECKED	G.A.G.	3-90	
			EAST PAPAGO PROFILE STA 74+00 TO STA 87+00
ROUTE	MILEPOST	LOCATION	
202L	4	48TH ST - PRIEST DR	DWG. NO. C-2.9

NE COR. SEC. 6, T. 1 N R. 4 E (507)
FD. B.C. IN HH

MCDOWELL RD.

F.H.W.A. REGION	STATE	PROJECT NO.	SHEET NO.	TOTAL SHEETS	AS BUILT
	ARIZ.	RAM-600-5-509	48	622	2/1/44

202L MA 4

CTR. SEC. 5
FD. 1/2" I.P.

(545)

50TH AND ROOSEVELT
FD. 3" B.C. (503)

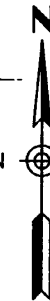
N0°01'26"W
2650.38'

W 1/4 COR. SEC. 5 (502)
FD. FLUSH B.C.

M. ROOSEVELT S89°46'53"E 1326.61'

S89°47'12"E 1326.50'

T. 1 N R. 4 E



SCT. 5

EAST PAPAGO CST C (100)

P.O.T. 39+08.91
BGN. PROJ. RAM 600-5-509

BEGIN RAMP A
STA. 0+00.00
EAST PAPAGO CST C
STA. 51+25.00, 89.00' LT

52ND AND LOWER ROOSEVELT (544)

FD. FLUSH BRASS CAP

END 52ND SB CST C (120)
STA. 30+60.00

END 52ND NB CST C (107)
STA. 30+60.00

EAST PAPAGO CST C
P.O.T. STA. 37+20.77

S72°45'25"E

S68°45'25"E

S73°54'10"E

BEGIN RAMP B
STA. 0+00.00
EAST PAPAGO CST C
STA. 42+34.80, 61.50' RT

RAMP B CST C

S52°42'24"E

RAMP A CST C

52ND SB CST C

52ND NB CST C
P.O.C. STA. 28+30.51 = (410)
END RAMP B
P.T. STA. 24+65.89

CONN. A P.C. STA. 2+17.70

52ND NB CST C

END NB P.T. STA. 24+50.00 (104)
BGN CONN A P.O.T. 0+00 12' LT
BGN NB P.C. 24+50.00, 12' RT

TAYLOR CST C
P.O.T. STA. 29+68.27 (414)
52ND NB CST C
P.O.C. STA. 21+37.88

END TAYLOR CST C (126)
P.O.T. STA. 31+20.00

TAYLOR CST C

BGN TAYLOR CST C
P.O.T. STA. 28+00.00 (411)
52ND SB CST C
P.O.T. STA. 21+53.67

(102) REFERENCE NUMBER. SEE GEOMETRIC DATA TABLE.

P.C. STA. 9+98.77
TAYLOR CST. C

TAYLOR CST C

P.C. STA. 16+45.15
TAYLOR CST. C

P.T. STA. 17+01.58
TAYLOR CST. C

P.I. STA. 18+99.05
TAYLOR CST. C

P.C. STA. 21+61.36
TAYLOR CST. C

P.T. STA. 22+91.89
TAYLOR CST. C

SW COR. SEC. 5 T. 1 N R. 4 E (501)
FD. 1/2" I.P.

VAN BUREN ST.

M. 50TH ST.
N00°02'28"E

S00°06'54"W

S89°37'51"E

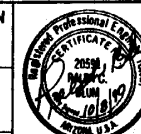
S25°09'21"E

DESIGN	NAME	DATE
DRAWN	BRW	6-87
CHECKED	BRW	6-87

ARIZONA DEPARTMENT OF TRANSPORTATION
HIGHWAY DIVISION

BRW
2700 N. Central Ave.
Suite 1000
Phoenix, Arizona 85004
(602) 234-1581

GEOMETRIC LAYOUT
STA 39+08.91 TO STA 67+00



ROUTE 202L

LOCATION 48TH ST - PRIEST DR

DWG. NO. C-1.1

TRACS NO. H 0860 OIC

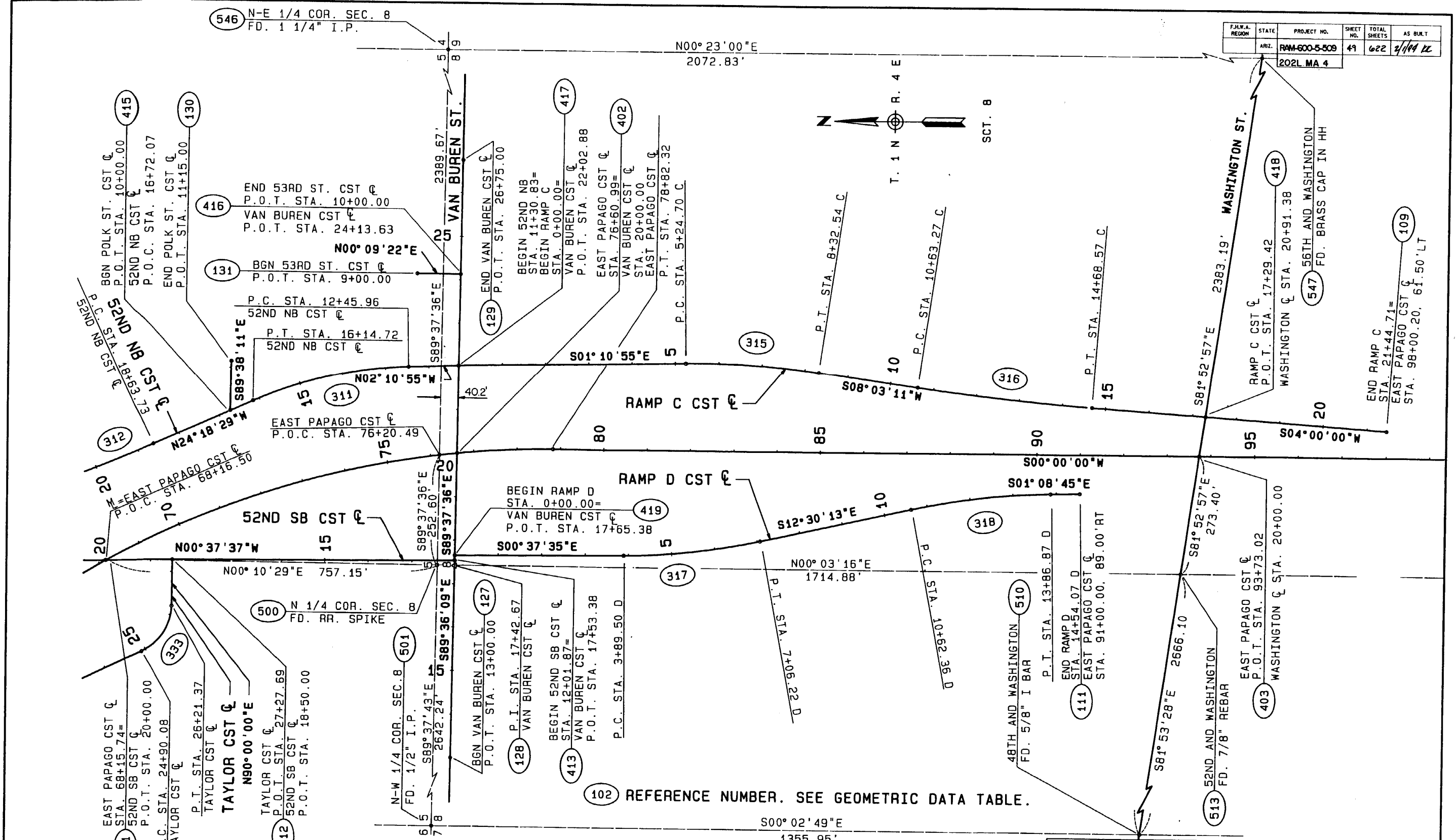
RAM 600-5-509
SHT 48 of 622

48 OF 622



NO.	FINISHED PLANS	REVISIONS	LOCATION	DATE

NO.	REVISIONS	LOCATION	DATE

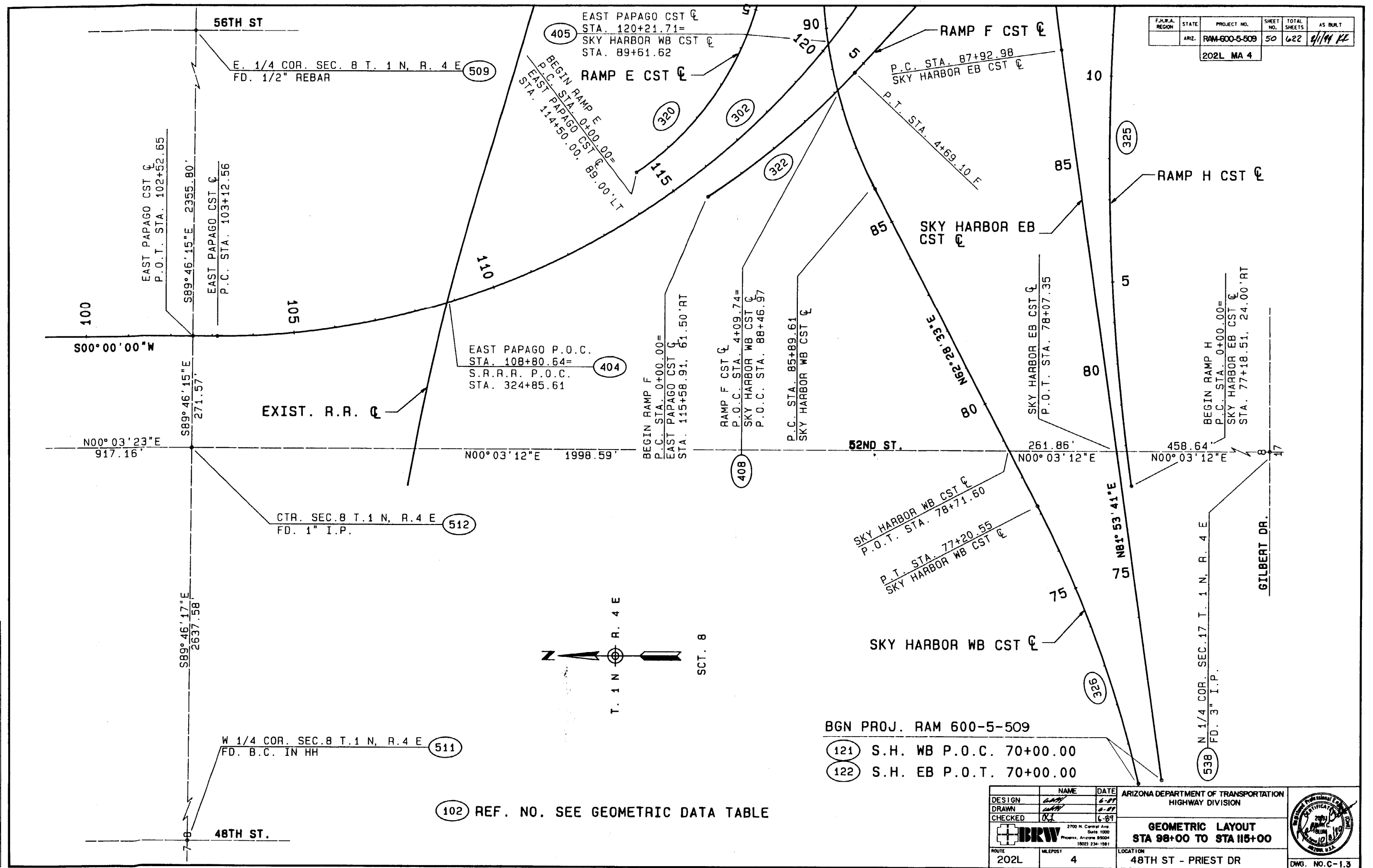
F.H.W.A. REGION	STATE	PROJECT NO.	SHEET NO.	TOTAL SHEETS	AS BUILT
ARIZ.	ARIZ.	RAM-600-5-509	49	622	2/1/99 KL



102 REFERENCE NUMBER. SEE GEOMETRIC DATA TABLE.


DESIGN	NAME	DATE	ARIZONA DEPARTMENT OF TRANSPORTATION HIGHWAY DIVISION
DRAWN			
CHECKED			
 2700 N. Central Ave. Suite 1000 Phoenix, Arizona 85004 (602) 234-1981			
ROUTE	MILEPOST	LOCATION	
202L	4	48TH ST - PRIEST DR	DWG. NO. C-1.2

F.H.W.A. REGION	STATE	PROJECT NO.	SHEET NO.	TOTAL SHEETS	AS BUILT
	ARIZ.	RAM-600-5-509	50	622	9/1/99 KL
202L MA 4					



102 REF. NO. SEE GEOMETRIC DATA TABLE

- 121 S.H. WB P.O.C. 70+00.00
- 122 S.H. EB P.O.T. 70+00.00

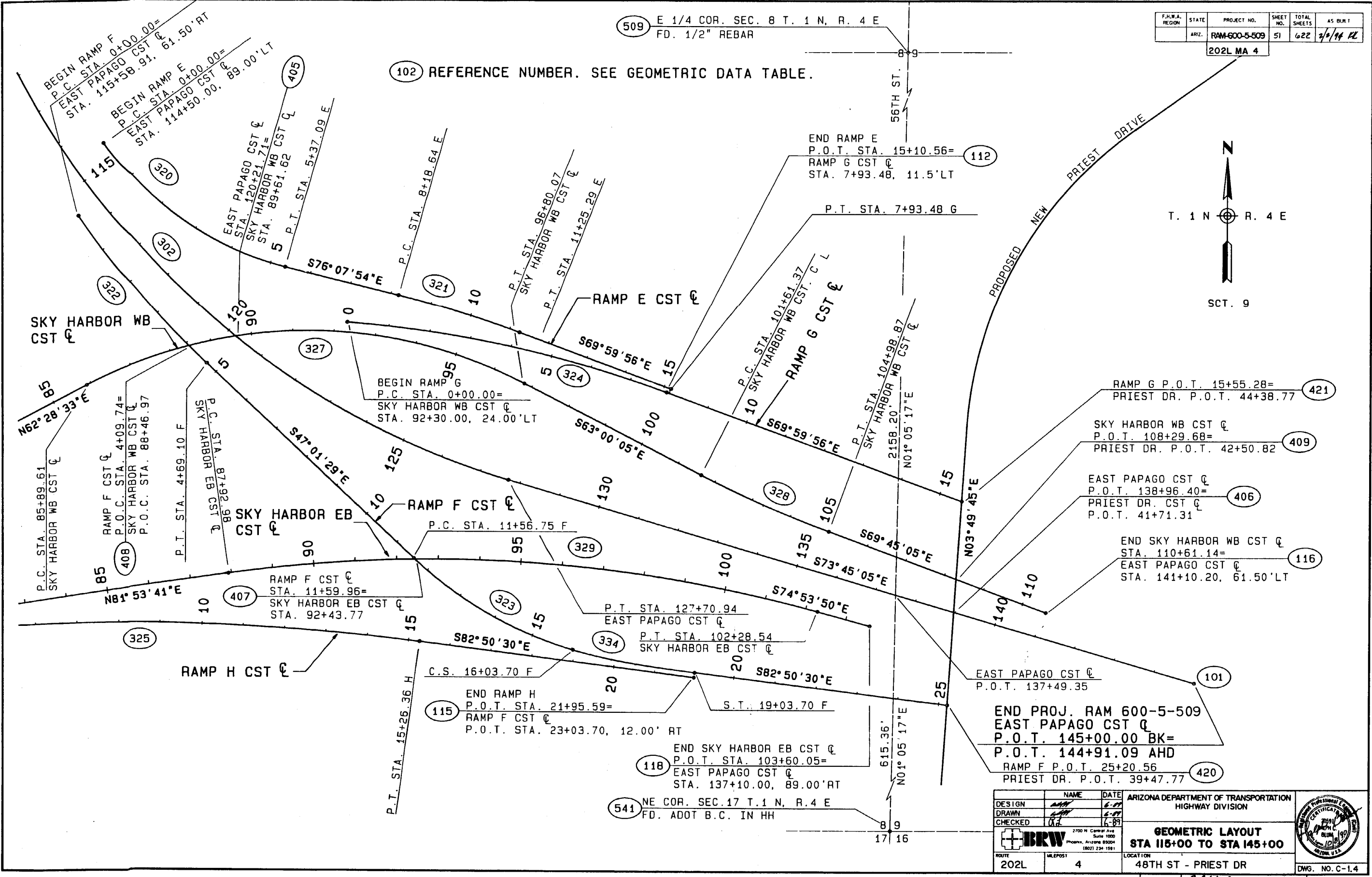
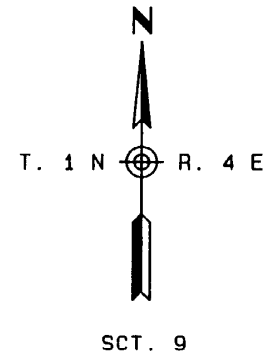
DESIGN	NAME	DATE	ARIZONA DEPARTMENT OF TRANSPORTATION HIGHWAY DIVISION
DRAWN			
CHECKED			
			GEOMETRIC LAYOUT STA 98+00 TO STA 115+00
ROUTE	MILEPOST	LOCATION	
202L	4	48TH ST - PRIEST DR	

509 E 1/4 COR. SEC. 8 T. 1 N, R. 4 E
FD. 1/2" REBAR

F.H.W.A. REGION	STATE	PROJECT NO.	SHEET NO.	TOTAL SHEETS	AS BUILT
ARIZ.		RAM-600-5-509	51	622	3/6/94 RL

202L MA 4

102 REFERENCE NUMBER. SEE GEOMETRIC DATA TABLE.



DATE	
LOCATION	
REVISIONS	
NO.	
BY	
DATE	
DESCRIPTION	
DATE	
BY	
DESCRIPTION	

DESIGN	NAME	DATE	ARIZONA DEPARTMENT OF TRANSPORTATION HIGHWAY DIVISION
DRAWN			
CHECKED			
			GEOMETRIC LAYOUT STA 115+00 TO STA 145+00
ROUTE	MILEPOST	LOCATION	
202L	4	48TH ST - PRIEST DR	DWG. NO. C-1.4



F.H.W.A. REGION	STATE	PROJECT NO.	SHEET NO.	TOTAL SHEETS	AS BUILT
ARZ.		RAM-600-5-509	52	622	2/6/88 KK
202L MA 4					

REFERENCE DATA					CURVE DATA															
DESCRIPTION	REF NO.	STATION	NORTHING	EASTING	PI			PC			PT/PCC			Δ	D	R	L	T	EXT.	
					STATION	NORTHING	EASTING	STATION	NORTHING	EASTING	STATION	NORTHING	EASTING							
E. PAPAGO MEDIAN CST. CENTERLINE																				
P.O.T. BGN RAM 600-5-509	100	39+08.91	893861.1229	481624.9406																
CURVE	301				67+71.49	893012.5820	484358.8590	52+36.62	893467.5559	482892.9762	78+82.32	891477.7164	484358.8590	72°45'25"	2°45'00"	2083.48	2645.70	1534.87	504.32	
CURVE	302																			
P.O.T. END RAM 600-5-509	101	145+00.00	886730.1081	487394.3245	117+45.26	887614.7857	484358.8590	103+12.56	889047.4827	484358.8590	127+70.94	887213.9090	485734.3289	73°45'05"	3°00'00"	1909.86	2458.38	1432.70	477.65	
RAMP A CST. CENTERLINE																				
P.O.T. BGN RAMP A	102	00+00.00	893585.6409	482812.7559																
CURVE	304				4+59.18	893458.3234	483253.9361	3+08.92	893499.9858	483109.5677	6+08.92	893396.3764	483390.8322	8°15'00"	2°45'00"	2083.48	300.00	150.26	5.41	
CURVE	305				9+63.97	893250.0000	483714.3077	7+57.97	893334.9282	483526.6257	11+63.76	893250.0000	483920.3111	24°20'50"	6°00'00"	954.93	405.79	206.00	21.97	
P.O.T. END RAMP A	103	12+46.62	893250.0000	484003.1727																
CONN. A CST. CENTERLINE																				
P.O.T. BGN CONN A	104	00+00.00	892948.5026	484162.0196																
CURVE END CONN A	306				3+08.98	893250.0000	484094.4523	2+17.70	893160.9297	484114.4134	3+71.63	893250.0000	484003.1725	77°22'06"	50°15'34"	114.00	153.94	91.28	32.04	
RAMP B CST. CENTERLINE																				
P.O.T. BGN RAMP B	105	00+00.00	893705.7850	481917.9529																
CURVE	307				7+02.20	893451.3604	482572.4394	5+48.33	893507.1101	482429.0277	8+54.05	893358.1334	482694.8471	16°03'01"	5°15'00"	1091.35	305.72	153.87	10.79	
CURVE	308				14+92.17	892971.5000	483202.5000	11+07.51	893204.5614	482896.4885	18+13.50	893097.9095	483565.7922	56°28'44"	8°00'00"	716.20	705.99	384.66	96.76	
CURVE	309				21+40.89	893205.5000	483875.0000	20+02.36	893159.9741	483744.1617	22+76.83	893205.5000	484013.5325	19°11'08"	6°59'24"	819.68	274.47	138.53	11.62	
CURVE END RAMP B	310				24+01.29	893205.5000	484137.9884	22+76.83	893205.5000	484013.5325	24+65.89	893329.4782	484127.0950	95°01'17"	50°15'34"	114.00	189.06	124.46	54.78	
52ND ST NB CST. CENTERLINE																				
P.O.T. BGN 52ND ST NB	417	11+30.83	891697.3088	484549.9936																
CURVE	311				14+32.67	891998.9272	484538.5012	12+45.96	891812.3536	484545.6101	16+14.72	892169.0835	484461.6441	22°07'33"	6°00'00"	954.93	368.77	186.71	18.08	
CURVE	312				21+57.88	892664.0950	484238.0546	18+63.73	892396.0215	484359.1395	24+50.00	892951.1267	484173.7291	11°40'35"	1°59'30"	2876.79	586.27	294.15	15.00	
CURVE	313				27+51.22	893033.3333	484121.9136	24+50.00	892953.7509	484185.4387	30+50.23	893548.8783	484116.2716	12°00'17"	2°00'00"	2864.79	600.23	301.22	15.79	
P.O.T. END 52ND ST NB	107	30+60.00	893558.6469	484116.1647																
52ND ST. SB CST. CENTERLINE																				
P.O.T. BGN 52ND ST SB	413	12+01.87	891700.2386	484100.5001																
P.O.T. END 52ND ST SB	120	30+60.00	893558.2530	484080.1669																
TAYLOR ST. CST. CENTERLINE																				
CURVE TAYLOR ST	330				10+34.93	892899.5859	482770.0552	9+98.77	892863.4245	482770.0293	10+55.48	892899.3982	482806.2162	90°15'23"	159°09'18"	36.00	56.71	36.16	15.03	
CURVE	331				16+81.04	892896.1516	483431.7616	16+45.15	892896.3378	483395.8765	17+01.58	892860.2660	483431.6896	89°49'04"	159°09'18"	36.00	56.43	35.89	14.83	
P.I.	123	18+99.05	892662.7930	483431.2930																
CURVE	332				22+34.51	892660.6313	483766.7417	21+61.36	892661.1027	483693.5882	22+91.89	892594.4147	483797.8386	64°28'30"	49°23'34"	116.00	130.53	73.16	21.14	
CURVE	333				25+63.77	892348.3258	483913.4078	24+90.09	892415.0163	483882.0884	26+21.37	892348.3258	483987.0863	64°50'39"	49°23'34"	116.00	131.28	73.68	21.42	
P.O.T.	412	27+27.69	892348.3258	484093.4078																
TAYLOR ST. CST. CENTERLINE																				
P.O.T.	411	28+00.00	892651.9724	484090.0848																
P.O.T.	126	31+20.00	892649.8527	484410.0778																
POLK ST. CENTERLINE																				
P.O.T. BGN POLK ST	415	10+00.00	892221.3523	484438.0350																
P.O.T. END POLK ST	130	11+15.00	892220.6225	484553.0327																

RAMP F SPIRAL 334			
C.S.	16+03.70	886805.6760	485892.8900
S.T.	19+03.70	886752.8237	486187.8636

Ls	300.00	φ	3°00'00"
a	2.00	⊖	6°00'00"
D	6°00'00"	C	299.67
Rc	954.93	V	100.26
"0"	3.93	U	200.24
t	149.88	X	299.26
Δs	9°00'00"	Y	15.68

NOTE: The coordinate reference system applicable to this project is the "EAST PAPAGO - HOHOKAM T.I. CONTROL SYSTEM". All coordinates shown hereon indicate project datum ground coordinates with a conversion factor of 1.00016 (Per A.D.O.T.).

DESIGN	NAME	DATE	ARIZONA DEPARTMENT OF TRANSPORTATION HIGHWAY DIVISION
DRAWN		6-87	
CHECKED		6-87	
 2700 N. Central Ave Suite 1000 Phoenix, Arizona 85004 (602) 234-1591			
GEOMETRIC DATA			
ROUTE	MILEPOST	LOCATION	DWG. NO. C-1.5
202L	4	48TH ST - PRIEST DR	

DATE: LOCATION: REVISIONS: