



Highway Attachment -ADOT Traffic Metrics

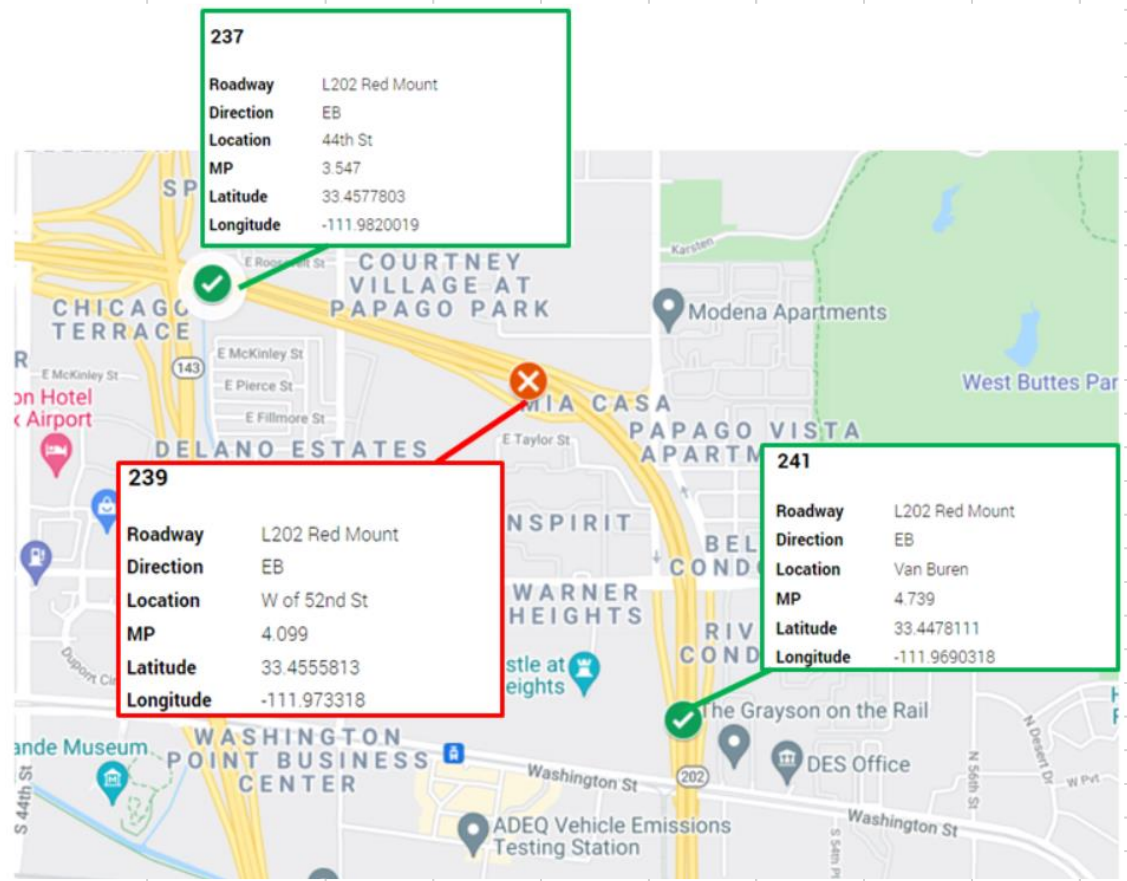
and 2018 AADT State Routes

HWY21MH008

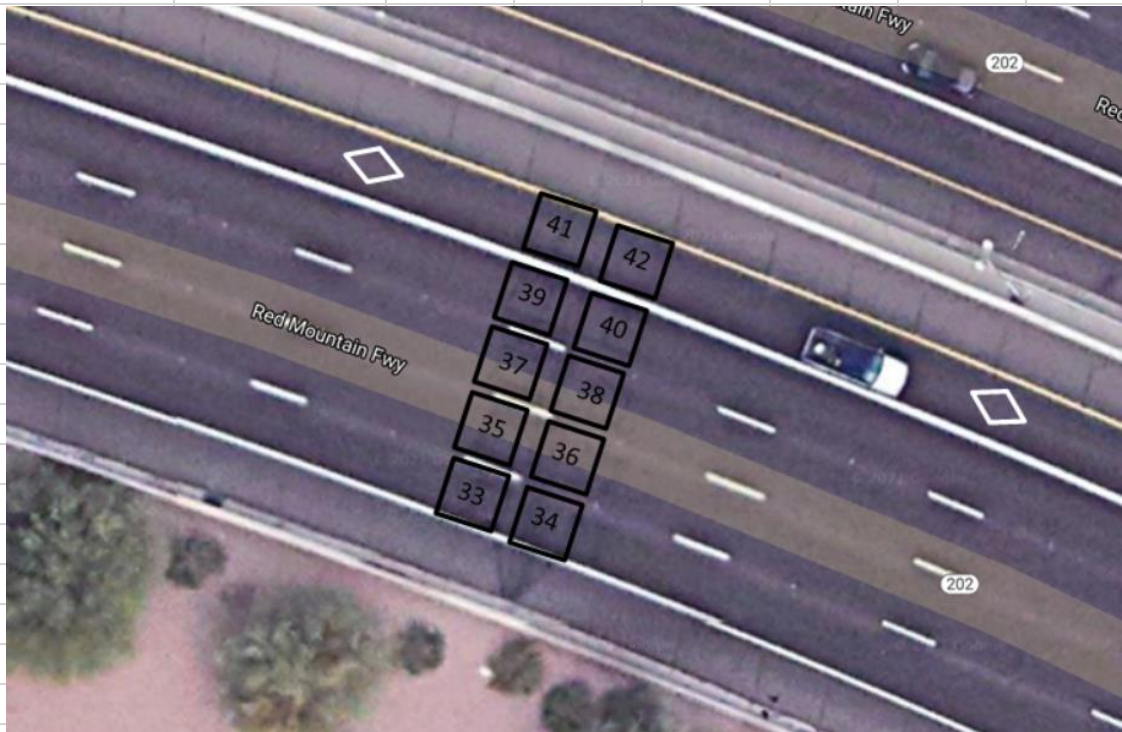
(47 pages)

Detection Station	Roadway	Direction	Location	Mile Post	Latitude	Longitude		
237	L202 Red Mount	EB	44th St	3.547	33.45778	-111.982		
239	L202 Red Mount	EB	W of 52nd	4.099	33.45558	-111.973		Data not available
241	L202 Red Mount	EB	Van Buren	4.739	33.44781	-111.969		

Detection Locations



Slot Locations



det_stn 241 Volume

userdatetime	slot 33	slot 34	slot 35	slot 36	slot 37	slot 38	slot 39	slot 40	slot 41	slot 42
6/9/2021 20:00 4	4	2	2	7	7	0	0	3	3	
6/9/2021 20:00 2	2	7	7	4	3	6	4	3	3	
6/9/2021 20:00 0	0	1	1	2	2	2	2	3	3	
6/9/2021 20:01 3	3	4	4	7	6	4	2	3	3	
6/9/2021 20:01 5	5	4	4	6	4	7	4	1	1	
6/9/2021 20:01 6	6	2	2	4	4	7	2	3	3	
6/9/2021 20:02 7	7	3	2	6	4	4	4	1	1	
6/9/2021 20:02 2	2	3	4	5	4	6	5	1	0	
6/9/2021 20:02 2	1	1	1	6	4	5	4	2	2	
6/9/2021 20:03 3	4	2	2	7	5	7	5	2	2	
6/9/2021 20:03 1	1	7	6	8	4	5	2	2	2	
6/9/2021 20:03 3	3	4	4	8	7	6	6	5	5	
6/9/2021 20:04 1	1	2	2	3	3	2	1	2	2	
6/9/2021 20:04 6	6	3	3	4	4	6	5	4	4	
6/9/2021 20:04 4	4	4	4	5	5	6	6	3	3	
6/9/2021 20:05 5	5	3	3	3	3	7	6	0	0	
6/9/2021 20:05 4	4	4	4	3	3	4	3	1	1	
6/9/2021 20:05 1	1	3	3	3	2	5	5	1	1	
6/9/2021 20:06 7	7	3	3	4	4	4	3	1	1	
6/9/2021 20:06 5	5	5	5	7	6	2	3	1	1	
6/9/2021 20:07 2	2	5	5	1	1	4	3	0	0	
6/9/2021 20:07 3	3	5	5	5	4	6	5	2	2	
6/9/2021 20:07 4	4	3	3	4	4	4	4	2	2	
6/9/2021 20:08 5	5	7	7	2	2	4	4	2	2	
6/9/2021 20:08 1	1	2	2	4	4	5	2	2	1	
6/9/2021 20:08 3	3	4	4	9	8	5	4	5	6	
6/9/2021 20:09 5	5	7	7	5	4	7	5	0	0	

6/9/2021 20:09 3	3	5	5	4	2	4	4	1	1
6/9/2021 20:09 1	1	2	1	8	8	5	5	0	0
6/9/2021 20:10 4	4	5	5	5	5	5	4	4	4
6/9/2021 20:10 4	4	5	5	4	3	6	6	4	4
6/9/2021 20:10 2	2	2	2	4	2	4	1	0	0
6/9/2021 20:11 4	4	5	5	5	4	7	6	4	4
6/9/2021 20:11 2	2	2	2	4	4	2	2	0	0
6/9/2021 20:11 4	4	6	6	4	3	5	3	5	5
6/9/2021 20:12 3	3	4	4	6	6	7	6	3	3
6/9/2021 20:12 3	3	3	3	4	4	6	6	2	2
6/9/2021 20:12 3	3	3	3	5	4	6	5	2	1
6/9/2021 20:13 0	1	7	7	3	3	4	3	2	2
6/9/2021 20:13 0	0	3	3	5	6	6	5	1	1
6/9/2021 20:13 5	5	2	2	5	5	3	3	1	1
6/9/2021 20:14 4	4	2	2	5	6	4	4	4	4
6/9/2021 20:14 2	2	5	5	7	6	8	4	2	2
6/9/2021 20:14 2	1	2	2	8	5	5	4	1	1
6/9/2021 20:15 5	6	6	6	2	1	4	2	3	2
6/9/2021 20:15 3	3	6	6	9	5	6	4	1	2
6/9/2021 20:15 3	3	4	4	3	2	2	1	2	2
6/9/2021 20:16 0	0	1	1	4	2	8	3	3	3
6/9/2021 20:16 5	5	4	4	5	5	7	5	1	1
6/9/2021 20:16 2	2	1	1	1	0	6	4	1	1
6/9/2021 20:17 2	3	6	6	5	5	1	1	4	4
6/9/2021 20:17 2	2	3	3	4	4	5	4	3	3
6/9/2021 20:17 1	1	2	2	3	2	1	1	2	2
6/9/2021 20:18 4	4	3	3	0	0	2	2	2	2
6/9/2021 20:18 1	1	3	3	2	2	1	1	1	1
6/9/2021 20:18 10	10	7	7	8	7	5	5	3	3

6/9/2021 20:19 3	3	4	4	3	2	4	2	0	0
6/9/2021 20:19 0	0	2	2	2	2	2	2	1	1
6/9/2021 20:20 5	5	4	4	4	4	5	5	4	4
6/9/2021 20:20 4	4	2	2	5	5	3	3	0	0
6/9/2021 20:20 1	1	2	2	3	3	1	1	0	0
6/9/2021 20:21 4	4	4	4	6	3	4	3	1	1
6/9/2021 20:21 3	3	8	8	5	2	7	4	1	1
6/9/2021 20:21 3	3	3	2	6	4	4	2	1	1
6/9/2021 20:22 4	4	5	5	8	5	7	5	1	1
6/9/2021 20:22 5	5	5	5	8	7	7	7	2	3
6/9/2021 20:22 1	1	2	2	4	4	2	2	0	0
6/9/2021 20:23 4	4	5	5	10	7	9	5	5	5
6/9/2021 20:23 3	3	3	3	8	8	2	2	2	2
6/9/2021 20:23 2	2	4	4	3	2	4	4	2	2
6/9/2021 20:24 1	1	2	1	3	3	5	5	1	1
6/9/2021 20:24 3	3	3	3	8	9	3	3	2	2
6/9/2021 20:24 2	2	2	2	6	6	4	4	2	2
6/9/2021 20:25 3	3	2	2	2	2	5	4	1	1
6/9/2021 20:25 5	5	2	2	5	4	5	5	2	2
6/9/2021 20:25 3	3	4	4	6	4	3	2	0	0
6/9/2021 20:26 2	2	1	2	3	3	3	3	3	3
6/9/2021 20:26 4	4	1	1	1	0	1	1	1	1
6/9/2021 20:26 2	2	3	3	8	5	5	5	3	3
6/9/2021 20:27 2	2	3	3	4	5	2	2	4	4
6/9/2021 20:27 6	6	5	5	5	3	6	4	3	3
6/9/2021 20:27 3	3	7	6	7	7	7	7	3	3
6/9/2021 20:28 3	3	4	4	6	4	7	6	2	2
6/9/2021 20:28 0	0	4	4	4	3	4	4	3	3
6/9/2021 20:28 1	1	3	3	7	5	3	2	0	0

6/9/2021 20:29 1	1	2	2	2	2	3	2	1	1
6/9/2021 20:29 5	4	5	5	8	5	8	6	3	3
6/9/2021 20:29 2	3	5	5	4	5	2	3	1	1
6/9/2021 20:30 0	0	4	4	3	3	5	4	4	4
6/9/2021 20:30 2	2	4	4	6	5	8	5	1	1
6/9/2021 20:30 1	1	1	1	1	0	2	3	1	1
6/9/2021 20:31 3	3	4	4	4	4	3	3	0	0
6/9/2021 20:31 6	6	5	5	7	6	4	3	2	2
6/9/2021 20:32 4	4	5	5	6	4	5	4	5	5
6/9/2021 20:32 4	4	1	1	3	3	5	5	1	1
6/9/2021 20:32 5	5	2	2	1	1	1	1	2	2
6/9/2021 20:33 3	3	5	5	4	3	3	3	0	0
6/9/2021 20:33 3	3	4	4	5	4	4	4	2	2
6/9/2021 20:33 0	0	3	3	5	4	2	2	1	1
6/9/2021 20:34 2	2	3	3	3	3	4	2	3	3
6/9/2021 20:34 2	2	2	2	5	2	3	2	5	5
6/9/2021 20:34 4	4	6	6	5	4	4	4	2	2
6/9/2021 20:35 4	4	0	0	5	5	7	6	2	2
6/9/2021 20:35 5	5	4	4	7	7	7	5	7	7
6/9/2021 20:35 2	2	2	2	3	2	2	1	0	0
6/9/2021 20:36 3	3	1	1	2	2	4	3	1	1
6/9/2021 20:36 1	1	3	3	7	6	2	2	0	0
6/9/2021 20:36 4	4	5	5	10	8	4	0	2	2
6/9/2021 20:37 0	0	4	4	6	6	5	5	4	4
6/9/2021 20:37 8	8	3	3	3	1	4	3	2	2
6/9/2021 20:37 2	2	4	4	2	2	1	1	0	0
6/9/2021 20:38 0	0	4	4	5	5	4	4	2	2
6/9/2021 20:38 4	4	3	3	3	2	4	4	2	2
6/9/2021 20:38 2	2	4	3	3	4	3	2	2	2

6/9/2021 20:39 4	4	2	5	2	2	2	1	4	4
6/9/2021 20:39 3	3	2	2	7	5	6	2	3	3
6/9/2021 20:39 3	3	1	1	3	2	2	1	1	1
6/9/2021 20:40 2	2	6	6	5	4	8	6	1	1
6/9/2021 20:40 4	4	3	3	5	4	4	4	2	2
6/9/2021 20:40 3	3	2	2	5	4	4	2	2	2
6/9/2021 20:41 6	6	10	10	6	6	4	4	4	4
6/9/2021 20:41 5	5	4	4	8	7	4	2	2	2
6/9/2021 20:41 2	2	2	2	6	8	4	5	1	1
6/9/2021 20:42 0	0	4	4	3	3	3	2	2	2
6/9/2021 20:42 2	2	4	4	6	6	7	6	4	4
6/9/2021 20:42 4	4	4	4	4	4	6	4	2	2
6/9/2021 20:43 3	3	3	3	4	4	4	2	3	3
6/9/2021 20:43 2	2	4	4	5	5	9	8	6	6
6/9/2021 20:44 7	7	3	3	4	4	3	2	0	0
6/9/2021 20:44 2	2	5	5	2	3	3	2	1	1
6/9/2021 20:44 1	1	2	2	0	0	0	0	0	0
6/9/2021 20:45 4	4	4	4	5	5	7	8	2	2
6/9/2021 20:45 2	2	1	1	6	4	6	4	3	3
6/9/2021 20:45 4	4	4	4	3	3	4	5	2	2
6/9/2021 20:46 1	1	2	2	2	2	3	3	1	1
6/9/2021 20:46 3	3	3	3	4	4	4	4	3	3
6/9/2021 20:46 4	4	3	3	2	2	3	3	2	2
6/9/2021 20:47 7	7	8	8	5	5	4	4	3	3
6/9/2021 20:47 4	4	2	2	8	4	8	4	2	2
6/9/2021 20:47 0	0	4	3	3	3	4	4	4	4
6/9/2021 20:48 4	4	3	4	5	3	4	3	2	2
6/9/2021 20:48 2	2	4	4	6	3	6	4	0	0
6/9/2021 20:48 3	3	8	7	5	3	8	5	0	0

6/9/2021 20:49 2	2	4	4	3	2	4	1	1	1
6/9/2021 20:49 1	1	1	2	6	4	3	1	0	0
6/9/2021 20:49 6	6	3	3	7	7	6	6	5	5
6/9/2021 20:50 3	3	2	2	3	3	4	4	2	2
6/9/2021 20:50 4	4	2	2	2	1	5	4	0	0
6/9/2021 20:50 1	1	6	6	1	2	6	5	2	2
6/9/2021 20:51 1	1	5	5	4	3	5	3	3	3
6/9/2021 20:51 2	2	5	5	5	5	4	3	1	1
6/9/2021 20:51 4	4	1	1	4	4	2	2	0	0
6/9/2021 20:52 0	0	1	1	1	1	2	2	2	2
6/9/2021 20:52 3	3	4	4	8	7	9	9	5	5
6/9/2021 20:52 3	3	3	3	5	5	3	3	1	1
6/9/2021 20:53 5	5	8	8	5	4	7	6	2	2
6/9/2021 20:53 1	1	4	4	4	4	3	3	0	0
6/9/2021 20:53 2	2	2	2	3	2	3	2	1	1
6/9/2021 20:54 3	2	4	4	4	3	5	4	3	3
6/9/2021 20:54 1	2	1	1	1	1	2	2	1	1
6/9/2021 20:54 2	2	0	0	1	0	1	0	0	0
6/9/2021 20:55 0	1	1	1	2	0	2	0	0	0
6/9/2021 20:55 9	9	3	2	6	3	11	7	4	4
6/9/2021 20:56 7	7	5	5	6	6	7	6	6	6
6/9/2021 20:56 4	5	5	5	5	3	7	5	2	2
6/9/2021 20:56 5	5	5	2	7	5	5	3	3	3
6/9/2021 20:57 1	1	0	0	5	4	7	3	1	1
6/9/2021 20:57 2	2	4	4	7	6	3	2	2	2
6/9/2021 20:57 4	4	5	5	4	2	6	3	2	2
6/9/2021 20:58 1	1	0	0	6	6	6	3	3	3
6/9/2021 20:58 2	2	5	5	3	3	5	4	3	3
6/9/2021 20:58 2	2	2	2	1	1	0	0	1	1

6/9/2021 21:09 4	4	5	5	5	6	6	6	2	2
6/9/2021 21:09 1	1	3	3	5	4	4	4	2	2
6/9/2021 21:09 4	4	5	5	6	3	7	6	5	5
6/9/2021 21:10 3	3	4	4	8	5	4	3	6	6
6/9/2021 21:10 2	2	4	3	6	6	5	4	3	3
6/9/2021 21:10 6	6	3	5	5	3	3	3	1	1
6/9/2021 21:11 1	1	7	7	7	8	8	7	3	3
6/9/2021 21:11 2	2	5	5	8	6	7	3	5	5
6/9/2021 21:11 3	3	2	2	2	2	6	4	3	3
6/9/2021 21:12 1	1	3	4	5	5	6	5	3	3
6/9/2021 21:12 3	3	4	4	4	3	7	4	6	6
6/9/2021 21:12 1	1	2	0	2	2	2	1	2	2
6/9/2021 21:13 5	5	1	1	4	4	7	3	2	2
6/9/2021 21:13 2	2	4	4	2	1	7	5	4	4
6/9/2021 21:13 4	4	4	4	4	3	2	1	0	0
6/9/2021 21:14 2	2	2	2	3	4	4	4	1	1
6/9/2021 21:14 2	2	2	2	4	4	5	4	5	5
6/9/2021 21:14 1	0	5	4	7	5	9	6	5	4
6/9/2021 21:15 5	6	1	2	2	2	4	4	5	6
6/9/2021 21:15 4	4	2	1	4	3	3	2	5	5
6/9/2021 21:15 3	3	3	3	3	4	5	3	4	4
6/9/2021 21:16 6	5	2	2	0	0	0	0	1	1
6/9/2021 21:16 3	4	2	1	3	2	7	5	4	4
6/9/2021 21:16 4	3	1	0	1	1	2	2	1	1
6/9/2021 21:17 3	3	4	3	3	2	4	4	3	3
6/9/2021 21:17 5	5	3	2	7	3	4	1	3	3
6/9/2021 21:17 2	2	3	2	4	3	4	4	1	1
6/9/2021 21:18 1	2	3	3	5	3	6	5	7	6
6/9/2021 21:18 3	2	1	2	1	2	5	4	5	6

6/9/2021 21:18 2	3	1	1	2	1	2	3	3	2
6/9/2021 21:19 2	3	3	2	4	0	2	1	0	1
6/9/2021 21:19 2	2	3	4	3	1	5	1	2	1
6/9/2021 21:19 1	1	5	4	7	3	10	2	1	2
6/9/2021 21:20 1	1	4	1	3	0	5	0	0	0
6/9/2021 21:20 1	1	6	2	2	2	2	1	1	1
6/9/2021 21:21 1	1	3	4	1	1	4	1	1	0
6/9/2021 21:21 3	3	1	4	0	0	1	2	0	0
6/9/2021 21:21 2	2	3	2	2	2	0	0	0	0
6/9/2021 21:22 3	2	3	3	0	1	1	0	0	1
6/9/2021 21:22 2	3	3	0	2	1	1	2	2	1
6/9/2021 21:22 2	1	3	4	1	1	1	2	2	2
6/9/2021 21:23 1	2	4	3	2	1	3	1	2	3
6/9/2021 21:23 3	2	1	0	2	4	1	3	1	0
6/9/2021 21:23 1	1	1	2	2	0	2	1	0	1
6/9/2021 21:24 0	1	1	1	0	1	0	2	2	1
6/9/2021 21:24 1	0	3	2	0	0	1	0	0	0
6/9/2021 21:24 0	0	0	0	0	0	0	0	0	1
6/9/2021 21:25 1	2	1	0	1	0	1	2	3	3
6/9/2021 21:25 1	0	2	2	1	2	3	3	4	4
6/9/2021 21:25 1	1	5	2	2	2	2	2	5	5
6/9/2021 21:26 2	2	4	1	4	2	3	4	5	4
6/9/2021 21:26 1	1	1	2	4	1	6	4	4	4
6/9/2021 21:26 2	3	1	3	1	3	3	2	4	4
6/9/2021 21:27 2	2	1	1	3	2	2	1	2	2
6/9/2021 21:27 1	1	1	1	1	3	4	3	3	4
6/9/2021 21:27 2	1	1	1	1	2	1	1	1	0
6/9/2021 21:28 1	1	1	1	1	3	2	1	0	0
6/9/2021 21:28 0	0	0	1	2	1	2	5	0	1

6/9/2021 21:28 1	2	2	1	2	2	3	1	1	1
6/9/2021 21:29 2	1	2	2	5	3	4	4	1	1
6/9/2021 21:29 0	0	0	0	2	2	3	1	1	0
6/9/2021 21:29 1	1	0	1	1	2	2	4	2	2
6/9/2021 21:30 2	2	4	4	3	1	2	1	3	4
6/9/2021 21:30 3	3	3	3	3	2	4	3	3	2
6/9/2021 21:30 2	2	4	1	5	4	4	4	2	2
6/9/2021 21:31 1	2	6	2	3	3	0	1	1	2
6/9/2021 21:31 2	2	6	3	3	1	2	1	1	0
6/9/2021 21:31 3	2	5	3	3	2	2	1	0	0
6/9/2021 21:32 1	1	3	2	1	1	0	1	0	0
6/9/2021 21:32 1	1	2	2	3	3	2	2	1	2
6/9/2021 21:33 1	1	2	2	2	2	3	2	1	2
6/9/2021 21:33 0	1	1	2	1	0	0	0	3	3
6/9/2021 21:33 1	1	1	0	2	0	1	1	2	1
6/9/2021 21:34 1	0	2	3	2	2	0	0	3	4
6/9/2021 21:34 0	0	1	0	0	0	0	0	2	2
6/9/2021 21:34 0	1	0	1	0	0	0	0	0	0
6/9/2021 21:35 1	1	2	1	0	2	2	1	3	2
6/9/2021 21:35 2	2	2	1	1	1	2	3	2	3
6/9/2021 21:35 1	0	1	1	0	0	2	1	2	2
6/9/2021 21:36 0	0	1	0	0	0	2	0	1	0
6/9/2021 21:36 1	2	1	2	1	0	2	0	2	2
6/9/2021 21:36 1	0	3	2	4	2	3	2	1	1
6/9/2021 21:37 0	0	0	5	2	2	4	3	1	1
6/9/2021 21:37 1	1	2	0	1	1	2	1	1	2
6/9/2021 21:37 1	2	1	2	6	0	6	3	2	1
6/9/2021 21:38 3	2	2	1	1	0	0	0	0	1
6/9/2021 21:38 1	1	0	1	1	2	1	2	2	2

6/9/2021 21:38 0	1	1	1	3	1	2	3	2	2
6/9/2021 21:39 0	0	3	1	0	1	1	0	0	0
6/9/2021 21:39 2	2	1	0	0	0	0	0	1	1
6/9/2021 21:39 0	0	1	1	0	0	0	1	1	0
6/9/2021 21:40 1	1	0	1	2	3	2	1	1	1
6/9/2021 21:40 0	0	1	3	0	0	0	0	1	1
6/9/2021 21:40 0	0	0	13	0	0	0	0	0	0
6/9/2021 21:41 0	0	1	4	2	0	0	1	0	0
6/9/2021 21:41 0	0	1	2	5	3	1	0	1	1
6/9/2021 21:41 1	1	1	0	2	2	0	0	0	0
6/9/2021 21:42 0	0	0	0	0	0	0	0	0	0
6/9/2021 21:42 1	2	1	1	0	0	0	0	1	1
6/9/2021 21:42 0	0	2	2	0	1	0	1	0	1
6/9/2021 21:43 1	1	2	1	1	1	0	0	0	0
6/9/2021 21:43 1	0	2	1	3	0	3	0	1	0
6/9/2021 21:43 0	1	1	1	1	3	2	1	0	0
6/9/2021 21:44 1	0	2	1	0	1	0	0	0	1
6/9/2021 21:44 3	3	7	3	2	0	0	0	1	1
6/9/2021 21:44 0	1	3	4	0	0	1	0	1	0
6/9/2021 21:45 2	1	2	1	0	1	0	1	0	0
6/9/2021 21:45 1	2	0	5	1	3	0	0	0	0
6/9/2021 21:46 2	1	3	2	0	1	1	1	0	1
6/9/2021 21:46 2	3	1	1	0	1	1	0	1	1
6/9/2021 21:46 1	0	4	2	3	0	0	0	0	0
6/9/2021 21:47 2	2	2	2	0	1	0	0	0	0
6/9/2021 21:47 1	1	1	2	0	0	0	0	0	0
6/9/2021 21:47 2	2	5	3	1	2	0	0	0	0
6/9/2021 21:48 2	2	3	2	2	1	0	0	0	0
6/9/2021 21:48 3	3	6	4	3	5	4	4	2	2

6/9/2021 21:48 3	3	4	5	5	5	4	3	3	3
6/9/2021 21:49 0	1	1	1	0	1	5	4	4	3
6/9/2021 21:49 1	1	7	2	4	3	5	3	4	4
6/9/2021 21:49 1	1	5	1	0	1	2	2	2	2
6/9/2021 21:50 1	1	5	4	2	8	2	4	0	0
6/9/2021 21:50 0	0	0	0	6	1	2	3	1	0
6/9/2021 21:50 2	1	2	3	2	1	7	0	2	3
6/9/2021 21:51 2	3	4	1	0	2	0	1	3	2
6/9/2021 21:51 2	1	3	2	0	0	0	0	0	0
6/9/2021 21:51 2	2	1	1	0	0	0	0	1	2
6/9/2021 21:52 0	0	4	2	1	3	1	1	1	1
6/9/2021 21:52 1	1	3	0	1	0	1	1	1	1
6/9/2021 21:52 1	1	0	1	0	4	0	0	3	2
6/9/2021 21:53 1	1	1	0	7	2	6	0	2	2
6/9/2021 21:53 0	0	0	0	4	1	5	0	0	0
6/9/2021 21:53 0	0	0	0	0	1	0	0	0	1
6/9/2021 21:54 1	1	0	1	1	1	2	0	0	0
6/9/2021 21:54 1	2	1	1	0	0	1	1	1	0
6/9/2021 21:54 2	1	4	2	0	0	1	0	0	0
6/9/2021 21:55 1	2	1	2	2	2	0	2	0	0
6/9/2021 21:55 2	1	4	4	4	4	2	1	2	3
6/9/2021 21:55 2	3	3	2	1	2	4	3	3	2
6/9/2021 21:56 2	1	2	2	2	1	2	2	4	4
6/9/2021 21:56 1	1	1	2	0	0	4	3	3	4
6/9/2021 21:56 1	1	2	2	0	0	3	4	3	3
6/9/2021 21:57 1	1	3	2	0	0	11	0	3	2
6/9/2021 21:57 1	1	3	2	0	0	11	0	3	2
6/9/2021 21:57 3	3	1	3	0	0	1	0	0	0
6/9/2021 21:58 2	2	4	4	0	0	2	2	3	4

6/9/2021 21:58 4	3	4	3	0	0	0	0	0	0
6/9/2021 21:58 4	5	6	3	0	0	1	1	2	2
6/9/2021 21:59 5	4	4	4	1	0	1	0	2	1
6/9/2021 21:59 3	4	3	2	0	2	0	0	0	0
6/9/2021 21:59 3	3	6	5	1	3	0	2	1	1
6/9/2021 22:00	3	3	4	0	3	2	3	1	2
Sum of Vol during 8 PM 522	526	615	609	801	670	782	608	351	349
Sum of Vol during 9 PM 326	329	463	418	424	374	492	358	326	325

det_stn 241 Speed

userdatetime	slot 33	slot 34	slot 35	slot 36	slot 37	slot 38	slot 39	slot 40	slot 41	slot 42
6/9/2021 20:00	73	73	69	69	71	71			80	80
6/9/2021 20:00	71	71	67	67	72	72	44	44	77	77
6/9/2021 20:00			64	64	69	69	74	74	78	78
6/9/2021 20:01	64	64	72	72	33	33	5	5	79	79
6/9/2021 20:01	69	69	70	70	66	66	37	37	79	79
6/9/2021 20:01	65	65	72	72	72	72	16	16	85	85
6/9/2021 20:02	72	72	69	69	68	68	43	43	91	91
6/9/2021 20:02	69	69	65	65	47	47	60	60		
6/9/2021 20:02	63	63	64	64	84	84	39	39	79	79
6/9/2021 20:03	66	66	67	67	73	73	31	31	81	81
6/9/2021 20:03	63	63	72	72	32	32	81	81	77	77
6/9/2021 20:03	73	73	69	69	64	64	59	59	78	78
6/9/2021 20:04	70	70	74	74	80	80			75	75
6/9/2021 20:04	67	67	59	59	66	66	48	48	71	71
6/9/2021 20:04	74	74	68	68	74	74	79	79	84	84
6/9/2021 20:05	67	67	71	71	64	64	75	75		
6/9/2021 20:05	69	69	67	67	66	66	70	70	64	64
6/9/2021 20:05	66	66	80	80	66	66	75	75	74	74
6/9/2021 20:06	65	65	66	66	66	66	48	48	74	74
6/9/2021 20:06	64	64	65	65	69	69	80	80	79	79
6/9/2021 20:07	69	69	69	69	71	71	17	17		
6/9/2021 20:07	64	64	66	66	28	28	60	60	71	71
6/9/2021 20:07	66	66	77	77	72	72	76	76	76	76
6/9/2021 20:08	63	63	66	66	69	69	80	80	81	81
6/9/2021 20:08	65	65	69	69	48	48	76	76	70	70
6/9/2021 20:08	77	77	70	70	63	63	72	72	80	80
6/9/2021 20:09	68	68	72	72	75	75	80	80		

6/9/2021 20:09 67	67	70	70	1	1	41	41	80	80
6/9/2021 20:09 59	59	71	71	72	72	80	80		
6/9/2021 20:10 71	71	71	71	79	79	74	74	77	77
6/9/2021 20:10 68	68	72	72	71	71	69	69	83	83
6/9/2021 20:10 65	65	70	70	86	86				
6/9/2021 20:11 69	69	70	70	68	68	69	69	79	79
6/9/2021 20:11 74	74	64	64	70	70	77	77		
6/9/2021 20:11 72	72	76	76	84	84	73	73	80	80
6/9/2021 20:12 69	69	68	68	69	69	27	27	79	79
6/9/2021 20:12 70	70	67	67	71	71	61	61	80	80
6/9/2021 20:12 64	64	69	69	70	70	75	75		
6/9/2021 20:13		65	65			73	73	72	72
6/9/2021 20:13		69	69	71	71	78	78	80	80
6/9/2021 20:13 67	67	69	69	76	76	73	73	68	68
6/9/2021 20:14 68	68	64	64	56	56	60	60	80	80
6/9/2021 20:14 82	82	72	72	38	38	49	49	76	76
6/9/2021 20:14 59	59	66	66	45	45	75	75	78	78
6/9/2021 20:15 67	67	72	72	1	1	71	71	84	84
6/9/2021 20:15 56	56	69	69	46	46	37	37	84	84
6/9/2021 20:15 74	74	74	74	4	4	71	71	83	83
6/9/2021 20:16		71	71	74	74	4	4	72	72
6/9/2021 20:16 71	71	69	69	68	68	32	32	91	91
6/9/2021 20:16 67	67	72	72			86	86	76	76
6/9/2021 20:17 60	60	68	68	70	70	73	73	81	81
6/9/2021 20:17 62	62	68	68	73	73	70	70	78	78
6/9/2021 20:17 70	70	64	64	66	66	66	66	76	76
6/9/2021 20:18 70	70	67	67			72	72	72	72
6/9/2021 20:18 73	73	75	75	68	68	71	71	71	71
6/9/2021 20:18 64	64	68	68	68	68	74	74	80	80

6/9/2021 20:19 58	58	74	74	77	77	80	80		
6/9/2021 20:19		68	68	74	74	78	78	76	76
6/9/2021 20:20 66	66	72	72	70	70	77	77	70	70
6/9/2021 20:20 73	73	74	74	70	70	72	72		
6/9/2021 20:20 70	70	74	74	74	74	77	77		
6/9/2021 20:21 65	65	66	66	65	65	77	77	68	68
6/9/2021 20:21 71	71	69	69	71	71	75	75	80	80
6/9/2021 20:21 70	70	69	69	30	30	74	74	74	74
6/9/2021 20:22 70	70	70	70	71	71	72	72	76	76
6/9/2021 20:22 60	60	57	57	70	70	64	64	84	84
6/9/2021 20:22 76	76	59	59	55	55	36	36		
6/9/2021 20:23 70	70	74	74	44	44	4	4	77	77
6/9/2021 20:23 69	69	59	59	72	72	68	68	77	77
6/9/2021 20:23 69	69	65	65	71	71	69	69	82	82
6/9/2021 20:24 70	70			71	71	82	82	79	79
6/9/2021 20:24 70	70	62	62	68	68	73	73	74	74
6/9/2021 20:24 56	56	75	75	75	75	74	74	75	75
6/9/2021 20:25 72	72	74	74	74	74	79	79	80	80
6/9/2021 20:25 64	64	62	62	70	70	76	76	74	74
6/9/2021 20:25 69	69	69	69	70	70	72	72		
6/9/2021 20:26 73	73			38	38	75	75	78	78
6/9/2021 20:26 67	67	56	56			73	73	79	79
6/9/2021 20:26 62	62	68	68	73	73	68	68	74	74
6/9/2021 20:27 64	64	62	62	43	43	67	67	77	77
6/9/2021 20:27 65	65	66	66	73	73	50	50	77	77
6/9/2021 20:27 70	70	56	56	60	60	68	68	76	76
6/9/2021 20:28 66	66	72	72	70	70	75	75	78	78
6/9/2021 20:28		73	73	71	71	54	54	76	76
6/9/2021 20:28 74	74	59	59	71	71	74	74		

6/9/2021 20:29 57	57	74	74	77	77	16	16	83	83
6/9/2021 20:29 67	67	64	64	50	50	64	64	79	79
6/9/2021 20:29 67	67	64	64	56	56	6	6	77	77
6/9/2021 20:30		67	67	72	72	56	56	79	79
6/9/2021 20:30 72	72	71	71	70	70	57	57	74	74
6/9/2021 20:30 60	60	74	74			74	74	92	92
6/9/2021 20:31 74	74	70	70	72	72	80	80		
6/9/2021 20:31 67	67	65	65	67	67	48	48	83	83
6/9/2021 20:32 65	65	72	72	76	76	43	43	80	80
6/9/2021 20:32 66	66	64	64	71	71	72	72	77	77
6/9/2021 20:32 67	67	70	70	74	74	77	77	80	80
6/9/2021 20:33 75	75	70	70	67	67	71	71		
6/9/2021 20:33 68	68	66	66	38	38	77	77	78	78
6/9/2021 20:33		69	69	72	72	2	2	79	79
6/9/2021 20:34 75	75	72	72	76	76	4	4	76	76
6/9/2021 20:34 81	81	66	66	71	71	6	6	81	81
6/9/2021 20:34 71	71	74	74	36	36	76	76	79	79
6/9/2021 20:35 69	69			70	70	77	77	75	75
6/9/2021 20:35 68	68	66	66	68	68	73	73	80	80
6/9/2021 20:35 60	60	79	79	74	74	80	80		
6/9/2021 20:36 71	71	77	77	71	71	5	5	75	75
6/9/2021 20:36 62	62	62	62	68	68	80	80		
6/9/2021 20:36 60	60	65	65	76	76			71	71
6/9/2021 20:37		67	67	55	55	77	77	82	82
6/9/2021 20:37 67	67	66	66			66	66	83	83
6/9/2021 20:37 74	74	70	70	1	1	2	2		
6/9/2021 20:38		71	71	68	68	74	74	71	71
6/9/2021 20:38 60	60	66	66	70	70	75	75	75	75
6/9/2021 20:38 74	74	73	73	70	70	80	80	82	82

6/9/2021 20:39 67	67	66	66	74	74	68	68	79	79
6/9/2021 20:39 65	65	60	60	9	9	64	64	78	78
6/9/2021 20:39 69	69	66	66	58	58			76	76
6/9/2021 20:40 72	72	68	68	73	73	72	72	80	80
6/9/2021 20:40 67	67	69	69	75	75	76	76	76	76
6/9/2021 20:40 67	67	70	70	33	33	68	68	72	72
6/9/2021 20:41 65	65	64	64	72	72	49	49	78	78
6/9/2021 20:41 64	64	64	64	63	63	80	80	78	78
6/9/2021 20:41 71	71	67	67	69	69	41	41	77	77
6/9/2021 20:42		66	66	78	78	68	68	80	80
6/9/2021 20:42 62	62	69	69	63	63	59	59	72	72
6/9/2021 20:42 70	70	69	69	65	65	72	72	75	75
6/9/2021 20:43 67	67	71	71	65	65	72	72	76	76
6/9/2021 20:43 70	70	75	75	89	89	36	36	78	78
6/9/2021 20:44 65	65	73	73	70	70	50	50		
6/9/2021 20:44 68	68	65	65	72	72	70	70	77	77
6/9/2021 20:44 79	79	65	65						
6/9/2021 20:45 69	69	69	69	72	72	74	74	72	72
6/9/2021 20:45 76	76	66	66	52	52	12	12	84	84
6/9/2021 20:45 63	63	70	70	74	74	72	72	69	69
6/9/2021 20:46 73	73	62	62	67	67	76	76	73	73
6/9/2021 20:46 67	67	62	62	69	69	76	76	77	77
6/9/2021 20:46 66	66	63	63	70	70	76	76	72	72
6/9/2021 20:47 65	65	69	69	69	69	61	61	76	76
6/9/2021 20:47 69	69	67	67	76	76	36	36	84	84
6/9/2021 20:47		65	65	29	29	38	38	77	77
6/9/2021 20:48 74	74	68	68	67	67	80	80	79	79
6/9/2021 20:48 72	72	68	68	25	25	11	11		
6/9/2021 20:48 68	68	73	73	39	39	5	5		

6/9/2021 20:49 70	70	69	69	36	36	1	1	74	74
6/9/2021 20:49 64	64	69	69	6	6				
6/9/2021 20:49 63	63	59	59	66	66	55	55	62	62
6/9/2021 20:50 71	71	76	76	74	74	67	67	86	86
6/9/2021 20:50 74	74	64	64	64	64	71	71		
6/9/2021 20:50 69	69	70	70	67	67	76	76	75	75
6/9/2021 20:51 77	77	67	67	69	69	76	76	82	82
6/9/2021 20:51 68	68	68	68	65	65	80	80	79	79
6/9/2021 20:51 70	70	74	74	62	62	64	64		
6/9/2021 20:52		77	77	83	83	72	72	74	74
6/9/2021 20:52 67	67	61	61	61	61	74	74	79	79
6/9/2021 20:52 71	71	70	70	69	69	78	78	73	73
6/9/2021 20:53 68	68	69	69	70	70	76	76	83	83
6/9/2021 20:53 72	72	68	68	70	70	75	75		
6/9/2021 20:53 61	61	63	63	69	69	52	52	70	70
6/9/2021 20:54 67	67	67	67	4	4	38	38	72	72
6/9/2021 20:54 68	68	64	64			65	65	73	73
6/9/2021 20:54 60	60								
6/9/2021 20:55		25	25						
6/9/2021 20:55 19	19	22	22	2	2	22	22	21	21
6/9/2021 20:56 18	18	29	29	20	20	26	26	23	23
6/9/2021 20:56 25	25	25	25	30	30	29	29	22	22
6/9/2021 20:56 38	38	22	22	22	22	3	3	49	49
6/9/2021 20:57 58	58			30	30	31	31	70	70
6/9/2021 20:57 66	66	49	49	53	53	75	75	78	78
6/9/2021 20:57 67	67	68	68	71	71	17	17	75	75
6/9/2021 20:58 73	73			74	74	8	8	78	78
6/9/2021 20:58 74	74	68	68	71	71	59	59	82	82
6/9/2021 20:58 78	78	71	71	71	71			74	74

6/9/2021 20:59 60	60	68	68	64	64	80	80	82	82
6/9/2021 20:59 71	71	73	73	58	58	69	69	79	79
6/9/2021 20:59 60	60	64	64	66	66	52	52	80	80
6/9/2021 21:00 66	66	70	70	67	67	73	73	83	83
6/9/2021 21:00		66	66	77	77	67	67	78	78
6/9/2021 21:00 70	70	69	69	25	25	73	73	73	73
6/9/2021 21:01 64	64	62	62	72	72	84	84		
6/9/2021 21:01 68	68	72	72	72	72	74	74	78	78
6/9/2021 21:01 72	72	68	68	77	77	74	74	75	75
6/9/2021 21:02 74	74	68	68	66	66	74	74		
6/9/2021 21:02 70	70			76	76	69	69	78	78
6/9/2021 21:02 71	71	66	66	76	76	70	70	76	76
6/9/2021 21:03 66	66	74	74	66	66	36	36	75	75
6/9/2021 21:03 69	69	66	66	71	71	55	55		
6/9/2021 21:03 70	70	70	70	68	68	77	77	84	84
6/9/2021 21:04 63	63	54	54	31	31	75	75	74	74
6/9/2021 21:04 60	60			69	69	38	38	72	72
6/9/2021 21:04 62	62	63	63	71	71	71	71	69	69
6/9/2021 21:05 64	64	64	64	70	70	71	71		
6/9/2021 21:05 54	54	70	70	70	70	62	62	90	90
6/9/2021 21:05 57	57	53	53	73	73		76	71	71
6/9/2021 21:06 60	60	53	53	56	56	55	55	60	60
6/9/2021 21:06 64	64	51	51	59	59	51	51	41	41
6/9/2021 21:06		70	70	54	54	42	42	57	57
6/9/2021 21:07 66	66	56	56	74	74	61	61	63	63
6/9/2021 21:07 64	64	63	63	65	65	80	80	68	68
6/9/2021 21:07		59	59	31	31	47	47	72	72
6/9/2021 21:08 59	59	54	54	58	58	50	50		
6/9/2021 21:08 48	48	53	53	52	52	55	55	66	66

6/9/2021 21:09 52	52	63	63	56	56	62	62	56	56
6/9/2021 21:09 58	58	50	50	53	53	53	53	66	66
6/9/2021 21:09 50	50	46	46	48	48	58	58	60	60
6/9/2021 21:10 63	63	49	49	9	9	28	28	57	57
6/9/2021 21:10 47	47	56	56	56	56	65	65	76	76
6/9/2021 21:10 39	39	40	40	56	56	65	65	68	68
6/9/2021 21:11 48	48	41	41	46	46	44	44	63	63
6/9/2021 21:11 49	49	37	37	18	18	1	1	42	42
6/9/2021 21:11 42	42	38	38	29	29	4	4	42	42
6/9/2021 21:12 61	61	46	46	45	45	25	25	58	58
6/9/2021 21:12 41	41	44	44	40	40	18	18	32	32
6/9/2021 21:12 48	48			45	45	5	5	31	31
6/9/2021 21:13 36	36	25	25	45	45	2	2	56	56
6/9/2021 21:13 34	34	35	35			22	22	44	44
6/9/2021 21:13 29	29	23	23	27	27	28	28		
6/9/2021 21:14 31	31	33	33	20	20	42	42	50	50
6/9/2021 21:14 30	30	23	23	29	29	34	34	51	51
6/9/2021 21:14		34	34	24	24	31	31	44	44
6/9/2021 21:15 36	36	19	19	21	21	28	28	43	43
6/9/2021 21:15 34	34			23	23	24	24	37	37
6/9/2021 21:15 35	35	36	36	32	32	42	42	33	33
6/9/2021 21:16 22	22	32	32					49	49
6/9/2021 21:16 22	22	40	40	1	1	28	28	37	37
6/9/2021 21:16 20	20			26	26	40	40	32	32
6/9/2021 21:17 18	18	20	20	34	34	24	24	26	26
6/9/2021 21:17 11	11	22	22	2	2	21	21	36	36
6/9/2021 21:17 4	4	12	12	10	10	18	18	36	36
6/9/2021 21:18 4	4	25	25	16	16	14	14	31	31
6/9/2021 21:18 6	6			7	7	9	9	14	14

6/9/2021 21:18 5	5	6	6	1	1	5	5	10	10
6/9/2021 21:19 3	3	5	5						
6/9/2021 21:19 4	4	16	16					1	1
6/9/2021 21:19		10	10	1	1	3	3	2	2
6/9/2021 21:20 3	3								
6/9/2021 21:20		1	1						
6/9/2021 21:21 2	2	6	6			1	1		
6/9/2021 21:21 5	5	5	5			3	3		
6/9/2021 21:21 4	4	2	2						
6/9/2021 21:22 5	5	21	21						
6/9/2021 21:22 5	5								
6/9/2021 21:22		6	6	4	4	2	2	1	1
6/9/2021 21:23 1	1	4	4			1	1	2	2
6/9/2021 21:23 2	2			2	2				
6/9/2021 21:23 2	2	2	2						
6/9/2021 21:24								4	4
6/9/2021 21:24		4	4						
6/9/2021 21:24									
6/9/2021 21:25								7	7
6/9/2021 21:25		1	1			7	7	9	9
6/9/2021 21:25 1	1	3	3	3	3	5	5	16	16
6/9/2021 21:26 1	1	1	1	6	6	3	3	14	14
6/9/2021 21:26 1	1					6	6	6	6
6/9/2021 21:26 6	6	3	3	4	4	6	6	8	8
6/9/2021 21:27 1	1			4	4			4	4
6/9/2021 21:27 3	3					2	2	4	4
6/9/2021 21:27		1	1						
6/9/2021 21:28 1	1			2	2				
6/9/2021 21:28				4	4				

6/9/2021 21:28	4			2	2	1	1	3	3
6/9/2021 21:29	5	4	4	2	2	4	4		
6/9/2021 21:29				1	1	4	4		
6/9/2021 21:29				4	4	5	5	1	1
6/9/2021 21:30	1	5	5	4	4			5	5
6/9/2021 21:30	4	5	5			5	5	5	5
6/9/2021 21:30	5	2	2	2	2	5	5	6	6
6/9/2021 21:31	3	10	10	6	6			2	2
6/9/2021 21:31	3	9	9			3	3		
6/9/2021 21:31	4	2	2	1	1				
6/9/2021 21:32		5	5	1	1				
6/9/2021 21:32		4	4	4	4	5	5		
6/9/2021 21:33		5	5	2	2	4	4	1	1
6/9/2021 21:33		1	1					5	5
6/9/2021 21:33						4	4		
6/9/2021 21:34		2	2					4	4
6/9/2021 21:34								4	4
6/9/2021 21:34									
6/9/2021 21:35		1	1					4	4
6/9/2021 21:35	3					2	2	4	4
6/9/2021 21:35		1	1					6	6
6/9/2021 21:36									
6/9/2021 21:36		4	4					9	9
6/9/2021 21:36									
6/9/2021 21:37				2	2	2	2	1	1
6/9/2021 21:37				4	4			2	2
6/9/2021 21:37	1					2	2		
6/9/2021 21:38	4	2	2						
6/9/2021 21:38				4	4	1	1	1	1

6/9/2021 21:38		3	3			3	3	4	4
6/9/2021 21:39									
6/9/2021 21:39									
6/9/2021 21:39									
6/9/2021 21:40				8	8	1	1	1	1
6/9/2021 21:40		2	2						
6/9/2021 21:40									
6/9/2021 21:41									
6/9/2021 21:41		2	2	4	4				
6/9/2021 21:41				4	4				
6/9/2021 21:42									
6/9/2021 21:42									
6/9/2021 21:42		3	3						
6/9/2021 21:43 2	2	8	8	2	2				
6/9/2021 21:43									
6/9/2021 21:43									
6/9/2021 21:44									
6/9/2021 21:44 3	3	6	6					3	3
6/9/2021 21:44		6	6						
6/9/2021 21:45 4	4	4	4						
6/9/2021 21:45 5	5			2	2				
6/9/2021 21:46		4	4						
6/9/2021 21:46 3	3							2	2
6/9/2021 21:46		4	4						
6/9/2021 21:47 3	3	2	2						
6/9/2021 21:47		1	1						
6/9/2021 21:47 3	3	4	4	3	3				
6/9/2021 21:48 4	4	1	1						
6/9/2021 21:48 4	4	6	6	5	5	4	4	3	3

6/9/2021 21:48 4	4	6	6	9	9	4	4	4	4
6/9/2021 21:49		5	5			5	5	5	5
6/9/2021 21:49 5	5	4	4	4	4	5	5	14	14
6/9/2021 21:49						3	3	11	11
6/9/2021 21:50 3	3	3	3	5	5	4	4		
6/9/2021 21:50						2	2		
6/9/2021 21:50 3	3	4	4					7	7
6/9/2021 21:51 3	3							9	9
6/9/2021 21:51 2	2	4	4						
6/9/2021 21:51 4	4	1	1					4	4
6/9/2021 21:52		2	2	1	1				
6/9/2021 21:52								2	2
6/9/2021 21:52 4	4							5	5
6/9/2021 21:53				1	1			5	5
6/9/2021 21:53				2	2				
6/9/2021 21:53									
6/9/2021 21:54									
6/9/2021 21:54 4	4								
6/9/2021 21:54 4	4	1	1						
6/9/2021 21:55 1	1	2	2						
6/9/2021 21:55		5	5	7	7	1	1	10	10
6/9/2021 21:55 3	3	4	4	5	5	5	5	6	6
6/9/2021 21:56 3	3	4	4			5	5	7	7
6/9/2021 21:56						3	3	7	7
6/9/2021 21:56 1	1	4	4			4	4	6	6
6/9/2021 21:57		1	1					7	7
6/9/2021 21:57		1	1					7	7
6/9/2021 21:57 4	4	1	1						
6/9/2021 21:58 2	2	4	4			4	4	7	7

6/9/2021 21:58 2	2	4	4							
6/9/2021 21:58 6	6	3	3					4	4	
6/9/2021 21:59 10	10	6	6							
6/9/2021 21:59 5	5	6	6							
6/9/2021 21:59 4	4	4	4							
6/9/2021 22:00 1	1	4	4					6	6	
Average of speed during 8 PM 76.1	66.9	66.9	66.8	66.8	61.7	61.7	59.2	59.2	76.1	
Average of speed during 9 PM 29.2	23.7	23.7	22.1	22.1	28.2	28.2	27.3	27.8	29.2	



Arizona Department of Transportation
AVERAGE ANNUAL DAILY TRAFFIC REPORT 2018

Loc ID	Route	BMP	Start	TCS MP	EMP	End	Pos Dir AADT	Neg Dir AADT	AADT 2018	AADT Derivation	K Factor %	D Factor %	AADT Single Trucks	AADT Combo Trucks	T Factor %	2040 Future AADT	
102322	SR 24	0	Exit 1 SR 202 (Exit 34A)		0.05	Exit 1A Ellsworth Rd	25,464	24,043	49,507		1	8	59	1,733	1,438	6.4	54,953
100669	SR 51	0	Exit 1 I-10 (Exit 147)	0.11	0.22	Exit 1A SR 202 (Exit 1471A)	85,621	79,034	164,655		3	2	56	4,610	3,952	5.2	184,414
100670	SR 51	0.22	Exit 1A SR 202	0.45	0.56	Exit 1B McDowell Rd	45,068	46,125	91,193		3	4	54	3,465	4,104	8.3	125,390
100671	SR 51	0.56	Exit 1B McDowell Rd	1	1.52	Exit 2 Thomas Rd	86,319	82,767	169,086		3	9	53	4,903	3,720	5.1	207,976
100672	SR 51	1.52	Exit 2 Thomas Rd	2	2.62	Exit 3 Indian School Rd	88,604	85,027	173,631		3	7	53	5,035	3,994	5.2	206,621
100673	SR 51	2.62	Exit 3 Indian School R	3	3.38	Exit 4A Highland Ave	88,713	83,596	172,309		3	8	57	4,308	4,135	4.9	212,802
100674	SR 51	3.38	Exit 4A Highland Ave	3.6	3.87	Exit 4B Colter St	75,679	75,459	151,138		7	7	61	5,289	4,836	6.7	169,275
100675	SR 51	3.87	Exit 4B Colter St	4.25	4.62	Exit 5 Bethany Home Rd	61,176	63,671	124,847		3	9	54	5,119	4,869	8	182,277
100676	SR 51	4.62	Exit 5 Bethany Home Rd	4.9	5.68	Exit 6 Glendale Ave / Lincoln Dr	75,806	78,900	154,706		3	9	59	4,951	3,868	5.7	189,515
100677	SR 51	5.68	Exit 6 Glendale Ave / Lincoln Dr	6	7.01	Exit 7 Northern Ave	88,050	84,259	172,309		3	9	61	5,169	3,446	5	260,187
100678	SR 51	7.01	Exit 7 Northern Ave	7.3	9.07	Exit 8 32nd St	87,243	81,635	168,878		3	9	57	4,897	3,209	4.8	223,763
100679	SR 51	9.07	Exit 8 32nd St	9.3	9.54	Exit 9 Shea Blvd	75,315	72,397	147,712		3	5	57	4,579	3,545	5.5	180,947
100680	SR 51	9.54	Exit 9 Shea Blvd	10	10.53	Exit 10 Cactus Rd	68,571	65,617	134,188		12	10	57	4,697	3,355	6	160,355
100681	SR 51	10.53	Exit 10 Cactus Rd	11	11.55	Exit 11 Thunderbird Rd	68,145	64,431	132,576		3	5	57	5,303	2,917	6.2	188,921
100682	SR 51	11.55	Exit 11 Thunderbird Rd	11.7	12.58	Exit 12 Greenway Rd	60,356	60,321	120,677		3	5	63	4,586	2,414	5.8	161,707
100683	SR 51	12.58	Exit 12 Greenway Rd	13	13.6	Exit 13 Bell Rd	53,558	53,020	106,578		12	9	67	4,050	3,197	6.8	147,078
100684	SR 51	13.6	Exit 13 Bell Rd	13.99	14.52	Exit 14 Union Hills Dr	59,884	52,191	112,075		1	9	57	3,922	3,250	6.4	165,311
100685	SR 51	14.52	Exit 14 Union Hills Dr	15	15.9	Exit 15 SR 101	59,888	52,237	112,125		1	9	58	3,924	3,251	6.4	171,551
100703	SR 61	352.88	US 60	359.5	368.84	Mobile Dr	3,112	2,206	5,318		1	10	59	128	112	4.5	13,401
100704	SR 61	368.84	Mobile Rd	370	372.29	SR 180A - Concho	887	1,005	1,892		1	9	63	184	68	13.3	5,638
100705	SR 61	372.29	SR 180A - Concho	380.7	381.86	US 180	945	928	1,873		1	10	67	184	69	13.5	5,582
100706	SR 61	416.49	US 191 - Witch Well	417	430.26	New Mexico State Line	-	-	324		3	16	57	36	29	20.1	586
100707	SR 64	185.46	I-40 (Exit 167) - East of Williams	189	191.09	Spring Valley Rd	3,842	3,765	7,607		1	9	58	611	251	11.3	14,529
100708	SR 64	191.09	Spring Valley Rd	199	213.46	US 180 - Valle	1,937	2,375	4,312		1	11	51	604	260	20	8,063
100709	SR 64	213.46	US 180 East - Valle	213.87	234.64	Grand Canyon Airport Rd (Old SS 64)	3,224	2,980	6,204		1	14	62	565	279	13.6	8,810
100710	SR 64	234.64	Grand Canyon Airport Rd (Old SS 64)	236.5	237.08	Entrance Rd / Road to Grand Canyon Park HQ	4,096	4,023	8,119		1	14	58	321	41	4.5	11,935
100711	SR 64	267.98	Road to Cendar Canyon / Desert View	275	295.83	US 89	1,449	1,075	2,524		1	10	54	180	28	8.2	3,710
100712	SR 66	56.44	I-40 (Exit 53) - Kingman	58	58.28	Castle Rock Rd	7,102	7,220	14,322		1	9	55	674	481	8.1	20,409
100713	SR 66	58.28	Castle Rock Rd	61	61.15	Industrial Pkwy	-	-	13,956		3	11	57	340	283	4.5	19,957
100714	SR 66	61.15	Industrial Parkway	61.3	61.68	MP 61.68	5,750	5,712	11,462		1	9	60	338	281	5.4	15,646
100715	SR 66	61.68	MP 61.68	68	71.09	Concho Dr	2,199	2,318	4,517		1	7	57	473	130	13.3	6,324
100716	SR 66	71.09	Concho Dr	73	74.77	Antares Rd	1,148	1,154	2,302		1	9	63	184	140	14.1	3,108
100717	SR 66	74.77	Antares Rd	90.9	110.54	BIA Rte 18 (To Hualapai Hilltop)	897	892	1,789		1	9	69	109	150	14.5	2,558
100718	SR 66	110.54	BIA Rte 18 (To Hualapai Hilltop)	117	123.17	Coconino / Yavapai County Line / Old US 66	442	503	945		1	10	52	85	89	18.4	1,380
100722	SR 67	579.36	US 89A - Jacob Lake	595.5	610.26	Grand Canyon National Park - North Rim Entrance	745	719	1,464		1	11	54	139	29	11.5	2,181
100723	SR 68	0	SR 95 / Main St / Locust Blvd - Bullhead City	0.44	1.36	Davis Dam Rd	7,847	7,777	15,624		1	9	52	870	291	7.4	22,030
100724	SR 68	1.36	Davis Dam Rd	2	2.49	Landon Dr	4,169	4,169	8,338		12	7	52	868	314	14.2	11,757
100725	SR 68	2.49	Landon Dr	3	4.09	La Puerta Rd	3,906	4,404	8,310		1	7	53	805	313	13.5	11,717
100726	SR 68	4.09	La Puerta Rd	14.48	17.8	Estrella Rd	4,333	4,364	8,697		1	9	54	470	313	9	12,219
100727	SR 68	17.8	Estrella Rd	19	21.79	Verde Rd	-	-	9,649		3	11	65	386	299	7.1	13,509
100728	SR 68	21.79	Verde Rd	25	27.47	US 93	7,086	7,180	14,266		7	7	59	1,345	499	12.9	20,258
100735	SR 69	262.58	I-17 (Exit 262) - Cordes Junction	263.88	265.31	Spring Ln - Spring Valley	7,894	7,920	15,814		1	10	53	283	710	6.3	22,416
100736	SR 69	265.31	Spring Ln - Spring Valley	268	270.7	Central Ave	7,003	6,570	13,573		1	8	57	1,193	871	15.2	25,110

Loc ID	Route	BMP	Start	TCS MP	EMP	End	Pos Dir AADT	Neg Dir AADT	AADT 2018	AADT Derivation	K Factor %	D Factor %	AADT Single Trucks	AADT Combo Trucks	T Factor %	2040 Future AADT
100737	SR 69	270.7	Central Ave	271.24	272	Central Ave - N side of Mayer	9,068	6,997	16,065	1	8	55	916	948	11.6	29,720
102313	SR 69	272	Central Ave - N side of Mayer	272.84	275.05	Poland Junction Rd	8,214	8,249	16,463	1	10	59	881	955	11.2	23,377
102314	SR 69	275.05	Poland Junction Rd	276	279.1	Main St - Humboldt	7,572	7,656	15,228	1	8	58	1,005	944	12.8	28,781
100738	SR 69	279.1	Main St - Humboldt	279.4	279.98	Rockey Hill Rd	8,851	7,723	16,574	1	8	55	895	1,011	11.5	18,066
100757	SR 69	279.98	Rockey Hill Rd	280.64	281.07	SR 169 - Dewey	8,775	8,445	17,220	1	8	57	1,410	1,079	14.5	33,407
100739	SR 69	281.07	SR 169 - Dewey	283	283.51	Fain Rd / Western Way	17,057	16,799	33,856	1	8	56	1,185	1,185	7	35,549
100741	SR 69	283.51	Fain Rd / Western Way	285	286.27	Mendecino Dr	12,956	12,554	25,510	12	8	58	1,633	995	10.3	29,081
100743	SR 69	286.27	Mendecino Dr	287.1	287.48	Robert Rd - Prescott Valley	12,749	12,607	25,356	1	8	57	1,765	939	10.7	28,906
100745	SR 69	287.48	Robert Rd - Prescott Valley	288	288.7	Glassford Hill Rd	17,091	18,007	35,098	1	8	54	2,246	1,334	10.2	42,820
100747	SR 69	288.7	Glassford Hill Rd	289.4	289.48	Prescott East Hwy	19,753	19,123	38,876	1	8	54	1,983	1,244	8.3	52,483
100749	SR 69	289.48	Prescott East Hwy	289.73	289.73	Stoneridge Dr	22,069	18,602	40,671	1	8	61	1,993	1,098	7.6	58,973
102325	SR 69	289.73	Stoneridge Dr	290.22	290.8	Diamond Dr	20,259	19,425	39,684	3	9	55	1,746	1,111	7.2	57,542
102326	SR 69	290.8	Diamond Dr	291.1	291.1	Ramada Dr	20,148	19,319	39,467	3	9	55	1,697	1,066	7	54,464
102327	SR 69	291.1	Ramada Dr	291.65	291.65	Sunrise Blvd / Old Black Cyn Hwy	19,905	19,453	39,358	7	8	57	1,653	1,102	7	51,559
102328	SR 69	291.65	Robin Dr	292.1	292.1	Sunrise Blvd / Old Black Cyn Hwy	18,896	20,417	39,313	1	10	71	1,376	1,140	6.4	63,501
102315	SR 69	292.1	Sunrise Blvd / Old Black Cyn Hwy	292.65	293.07	Walker Rd	17,131	17,578	34,709	1	8	51	1,833	1,237	8.8	42,692
100751	SR 69	293.07	Walker Rd	293.18	293.76	Prescott Lake Pkwy / Gateway Blvd	16,982	17,583	34,565	1	8	50	1,417	1,106	7.3	42,515
100754	SR 69	293.76	Prescott Lake Pkwy	294.7	295.4	Frontier Village Center	17,044	17,786	34,830	1	9	50	1,249	987	6.4	48,065
100755	SR 69	295.4	Frontier Village Center	295.84	296.04	SR 89 - Prescott	17,888	17,568	35,456	1	9	50	1,241	957	6.2	46,270
100763	SR 71	85.81	US 60 - East of Auguila	88.5	102.94	US 93	391	385	776	1	10	53	58	62	15.5	1,606
100764	SR 71	102.94	US 93	108.7	109.68	SR 89 - Congress	721	730	1,451	1	9	51	304	63	25.3	2,800
100765	SR 72	13.11	SR 95	17	23.56	MP 23.56	1,906	1,448	3,354	1	7	52	134	664	23.8	4,494
100766	SR 72	23.56	MP 23.56	26.6	27.04	Main St (Palamosa Rd) - Bouse	1,865	1,415	3,280	1	7	51	131	679	24.7	4,690
100767	SR 72	27.04	Main St (Palamosa Rd) - Bouse	34.99	46.71	Vicksburg Rd	1,207	1,054	2,261	1	11	55	71	538	26.9	3,233
102323	SR 72	46.71	Vicksburg Rd	49	49.91	US 60	973	683	1,656	1	6	56	66	298	22	2,202
100768	SR 73	310.38	US 60 - North of Carrizo	314.8	319.77	Cedar Creek	878	899	1,777	7	9	54	365	33	22.4	2,132
100769	SR 73	319.77	Cedar Creek	327.1	332.31	MP 332.31	669	663	1,332	1	9	54	373	52	31.9	1,558
100770	SR 73	332.31	MP 332.31	333.7	335.05	BIA Rte 46 (Road to Fort Apache Casino)	822	852	1,674	1	9	56	432	32	27.7	1,959
100771	SR 73	335.05	BIA Rte 46 (Road to Fort Apache Casino)	336.5	337.55	BIA Rte 44 / Fatco Rd	2,776	2,622	5,398	1	8	60	567	270	15.5	5,614
100772	SR 73	337.55	BIA Rte 44 / Fatco Rd	338	338.25	White River High School entrance	5,700	5,598	11,298	7	8	50	384	316	6.2	11,750
100774	SR 73	338.25	White River High School entrance	338.47	338.86	BIA Rte 55 / East Fork Rd	6,172	5,952	12,124	1	9	52	400	267	5.5	12,609
100776	SR 73	338.86	BIA Rte 55 / East Fork Rd	339	339.71	White River Hospital entrance	6,140	4,980	11,120	1	9	64	389	322	6.4	14,234
100778	SR 73	339.71	White River Hospital entrance	341.75	341.95	Potter St	4,912	-	9,824	12	8	53	354	138	5	12,575
100780	SR 73	341.95	Potter St	343	343.31	BIA Rte 473 / 34th St	3,212	3,248	6,460	1	9	59	239	78	4.9	8,269
100781	SR 73	343.31	BIA Rte 473 / 34th St	357.44	357.72	SR 260 - Hondah	2,528	2,513	5,041	1	10	63	176	52	4.5	6,452
100782	SR 74	0.08	US 60 - Morrystown	0.3	1.25	Castle Hot Springs Rd	3,104	2,727	5,831	1	7	59	491	632	19.3	11,487
102296	SR 74	1.25	Castle Hot Springs Rd	2	7.01	211th Ave	2,758	2,387	5,145	1	7	60	501	642	22.2	9,981
100783	SR 74	7.01	211th Ave	15.04	18.88	Castle Hot Springs Rd	2,680	2,379	5,059	1	12	76	436	352	15.6	10,017
100784	SR 74	18.88	Castle Hot Springs Rd	20	20.87	Old Lake Pleasant Rd	3,680	3,958	7,938	1	14	53	546	392	11.8	18,813
100785	SR 74	20.87	Old Lake Pleasant Rd	21.6	22.32	Pleasant Harbor Rd	-	-	6,355	3	6	65	419	388	12.7	14,299
100786	SR 74	22.32	Pleasant Harbor Rd	22.51	23.99	New River Rd	-	-	8,139	3	10	55	560	366	11.4	17,824
100787	SR 74	23.99	New River Rd	28.99	28.99	Archery Rd (AZ Game & Fish HQ)	3,069	2,998	6,067	1	8	53	459	236	11.5	13,347
100788	SR 74	28.99	Archery Rd (AZ Game & Fish HQ)	30	31	I-17 (Exit 223) NB On/Off Ramp	4,214	4,584	8,798	1	12	58	478	533	11.5	21,115
100789	SR 74	31	I-17 (Exit 223) NB On/Off Ramp	31.2	31.28	End of SR 74 (MP 31.28)	-	-	28,614	3	11	56	887	658	5.4	53,222
100790	SR 75	378.92	US 70 - Duncan	379	379.46	Viriden Rd	1,325	1,173	2,498	1	8	53	768	127	35.8	3,023
100791	SR 75	379.46	Viriden Rd	389	391.85	Apache Grove Rd	667	455	1,122	1	8	91	182	78	23.2	1,358
100792	SR 75	391.85	Apache Grove Rd	395	398.43	US 191 / SR 78	960	728	1,688	1	8	64	250	87	20	2,042

Loc ID	Route	BMP	Start	TCS MP	EMP	End	Pos Dir AADT	Neg Dir AADT	AADT 2018	AADT Derivation	K Factor %	D Factor %	AADT Single Trucks	AADT Combo Trucks	T Factor %	2040 Future AADT	
100793	SR 77	68.05	I-10 (Exit 255)	68.7	69.54	Oracle Rd / Miracle Mile	13,377	13,919	27,296		1	8	53	1,327	778	7.7	41,217
100794	SR 77	69.54	Oracle Rd / Miracle Mile	70	70.3	Prince Rd	16,458	17,771	34,229		1	7	53	834	1,550	7	47,236
100795	SR 77	70.3	Prince Rd	70.5	70.8	Roger Rd	17,641	17,297	34,938		1	7	55	2,401	1,516	11.2	48,913
100796	SR 77	70.8	Roger Rd	71.2	71.3	Wetmore Rd	20,719	20,079	40,798		1	8	58	1,714	1,632	8.2	54,669
100797	SR 77	71.3	Wetmore Rd	71.8	72.06	River Rd	21,184	21,180	42,364		3	8	59	1,313	1,610	6.9	58,039
100798	SR 77	72.06	River Rd	72.6	73.85	Orange Grove Rd	14,655	15,845	30,500		7	9	56	946	1,556	8.2	41,480
100799	SR 77	73.85	Orange Grove Rd	74.4	74.85	Ina Rd	17,324	17,216	34,540		1	8	55	2,909	1,473	12.7	48,701
100800	SR 77	74.85	Ina Rd	75.3	75.88	Magee Rd	27,250	27,875	55,125		2	8	53	1,709	6,615	15.1	82,688
100801	SR 77	75.88	Magee Rd	76.3	76.92	Hardy Rd	18,833	18,825	37,658		7	8	59	2,462	1,431	10.3	53,474
100802	SR 77	76.92	Hardy Rd	76.98	77.98	Linda Vista Rd	20,298	19,138	39,436		1	8	55	2,903	2,117	12.7	54,816
100803	SR 77	77.98	Linda Vista Rd	78.3	78.97	MP 78.97	13,400	17,194	30,594		1	9	53	1,499	1,254	9	42,832
100804	SR 77	78.97	MP 78.97	79.8	81.81	Tangerine Rd	16,180	14,863	31,043		1	9	51	1,211	1,242	7.9	43,460
100805	SR 77	81.81	Tangerine Rd	82.55	82.75	Rancho Vistoso Rd	14,934	14,801	29,735		1	8	50	1,219	1,249	8.3	40,440
100806	SR 77	82.75	Rancho Vistoso Blvd	83.7	84	MP 84	15,337	14,390	29,727		1	8	58	1,189	1,249	8.2	49,050
100807	SR 77	84	MP 84	85	85.76	Golder Ranch Rd	14,820	14,993	29,813		1	8	62	1,222	1,222	8.2	50,384
100808	SR 77	85.76	Golder Ranch Rd	89	91.14	SR 79 - Oracle Jct	5,973	5,974	11,947		1	10	53	588	229	6.8	21,744
100809	SR 77	91.14	SR 79 - Oracle Junction	96	100.27	S Oracle Rd / Old Hwy 77 - Oracle	3,347	3,408	6,755		1	8	62	339	39	5.6	14,388
100810	SR 77	100.27	S Oracle Rd / Old Hwy 77 - Oracle	101.8	103.35	N Oracle Rd / Old Hwy 77 - Oracle	2,159	2,114	4,273		1	8	52	222	219	10.3	9,913
100811	SR 77	103.35	N Oracle Rd / Old Hwy 77 - Oracle	107	109.14	Reddington Rd (to San Manuel)	2,410	2,502	4,912		1	8	55	346	224	11.6	13,312
100812	SR 77	109.14	Reddington Rd (to San Manuel)	112	113.61	S Main St / Old Tiger Rd (to Mammoth)	1,955	1,551	3,506		1	8	52	256	179	12.4	10,097
100813	SR 77	113.61	S Main St / Old Tiger Rd (to Mammoth)	114.4	115.33	Owens Pl	2,024	2,081	4,105		1	10	65	194	134	8	10,919
100814	SR 77	115.33	Owens Pl	121	134.8	SR 177 - Winkleman	1,416	1,099	2,515		1	8	83	198	169	14.6	6,665
100815	SR 77	134.8	SR 177 North - Winkleman	164	170.93	US 70 - East of Globe	683	765	1,448		1	10	53	106	78	12.7	1,781
100816	SR 77	342.2	US 60 - East of Show Low	346	349.56	White Mountain Lake Rd	4,340	4,694	9,034		1	8	57	396	299	7.7	11,925
102309	SR 77	349.56	White Mountain Lake Rd	353	353.37	Shumway Rd	4,383	4,383	8,766		12	10	53	369	268	7.3	11,220
100817	SR 77	353.37	Shumway Rd	353.5	357.41	Pinedale Rd	4,333	4,232	8,565		1	10	51	831	309	13.3	10,963
100818	SR 77	357.41	Pinedale Rd	357.7	357.87	100 North - Taylor	6,967	7,012	13,979		1	8	55	1,209	532	12.5	17,893
100820	SR 77	357.87	100 North - Taylor	357.99	359.41	Snowflake Jr High School entrance	7,013	7,109	14,122		7	8	53	1,232	534	12.5	17,935
100822	SR 77	359.41	Snowflake Jr High School entrance	360.3	361.05	SR 277 / Snowflake Blvd	4,419	7,560	11,979		1	8	61	898	539	12	15,213
100824	SR 77	361.05	SR 277 / Snowflake Blvd	363.6	365.1	MP 365.10	2,196	2,115	4,311		3	8	54	188	157	8	5,475
100825	SR 77		MP 365.10	369.6		SR 377	1,671	1,659	3,330		1	10	58	252	211	13.9	4,296
100826	SR 77	386.21	SR 377	387	387.8	US 180 East - South of Holbrook	3,509	3,900	7,409		1	8	52	465	454	12.4	11,928
100827	SR 77	387.8	US 180 East - South of Holbrook	388	388.67	SB 40 (8) - Holbrook	5,879	5,969	11,848		1	7	51	866	511	11.6	18,483
100828	SR 77	395.05	I-40 (Exit 292) - Keams Canyon	396	400.47	Old Keams Canyon Rd	654	676	1,330		1	12	53	94	29	9.2	1,530
102308	SR 77	400.47	Old Keams Canyon Rd	401	408.93	Navajo Reservation Boundary	584	576	1,160		1	10	56	113	41	13.3	1,392
100845	SR 78	154.55	US 191 / SR 75 - South of Clifton	158.83	174.73	New Mexico State Line	163	175	338		1	17	54	42	9	15.1	541
100846	SR 79	91.14	SR 77 - North of Oro Valley	94.02	119.01	96 Ranch Rd	1,402	1,434	2,836		1	12	61	277	129	14.3	3,772
100847	SR 79	119.01	96 Ranch Road	126.75	127.64	Cactus Forest Rd	1,945	1,814	3,759		1	9	56	316	243	14.9	9,773
100848	SR 79	127.64	Cactus Forest Rd	129.7	132.21	SB 79	1,942	1,811	3,753		1	9	60	257	244	13.3	10,358
100849	SR 79	132.21	SB 79	132.78	132.91	County Canal Rd	1,382	1,379	2,761		1	9	59	263	257	18.8	8,283
100850	SR 79	132.91	County Canal Rd	133	134.01	SR 79 B / Butte Ave	3,248	3,005	6,253		1	8	61	433	181	9.8	18,759
100851	SR 79	134.01	SR 79 B / Butte Ave	134.2	134.5	Diversion Dam Rd	6,032	6,401	12,433		1	9	60	1,025	401	11.5	37,299
100852	SR 79	134.5	Diversion Dam Rd	135	136.03	Hunt Hwy	4,507	5,881	10,388		1	9	67	1,250	466	16.5	24,723
100853	SR 79	136.03	Hunt Hwy	136.6	137.54	MP 137.54	3,215	3,308	6,523		1	9	61	305	283	9	18,525
100854	SR 79	137.54	MP 137.54	143.01	150.28	US 60 - Florence Jct	3,076	3,223	6,299		1	11	74	127	246	5.9	7,370
100855	SR 80	293.27	SB 10 (3) - Benson	294	294.63	Country Club Dr	4,015	4,015	8,030		12	8	53	779	361	14.2	11,322
100856	SR 80	294.63	Country Club Dr	294.8	295.78	Post Ranch Rd	3,318	-	6,636		12	9	57	644	299	14.2	8,627

Loc ID	Route	BMP	Start	TCS MP	EMP	End	Pos Dir AADT	Neg Dir AADT	AADT 2018	AADT Derivation	K Factor %	D Factor %	AADT Single Trucks	AADT Combo Trucks	T Factor %	2040 Future AADT
100857	SR 80	295.78	Post Ranch Rd	297	298.34	Apache Powder Rd (South)	3,367	-	6,733	12	8	50	653	304	14.2	9,494
100858	SR 80	298.34	Apache Powder Rd (South)	300	300.7	ADOT Maintenance Yard Entrance	3,356	3,422	6,778	1	7	64	372	298	9.9	9,489
100859	SR 80	300.7	ADOT maintenance yard entrance	301.96	303.41	Judd St	1,843	1,819	3,662	1	9	53	356	166	14.3	5,200
100860	SR 80	303.41	Judd St	304.85	313.91	SR 82	1,481	1,574	3,055	1	8	62	296	138	14.2	4,338
100861	SR 80	313.91	SR 82	315	317.04	Fremont St - Tombstone	1,742	1,795	3,537	1	8	61	239	197	12.3	4,987
100862	SR 80	317.04	Fremont St - Tombstone	317.2	318.03	Gleeson Rd	2,414	2,587	5,001	1	7	52	691	193	17.7	7,101
100863	SR 80	318.03	Gleeson Rd	320	321.05	Davis Rd	1,001	1,221	2,222	1	8	55	190	159	15.7	3,155
100864	SR 80	321.05	Davis Rd	329	332.89	SR 90	871	861	1,732	1	13	60	73	50	7.1	2,052
100865	SR 80	332.89	SR 90	336.3	339.81	West Blvd - Bisbee	2,408	2,414	4,822	1	9	50	227	96	6.7	7,281
100866	SR 80	339.81	West Blvd - Bisbee	340.6	341.49	Naco Rd	2,228	2,169	4,397	1	10	51	219	95	7.1	6,596
100867	SR 80	341.49	Naco Rd	342.64	343.3	SR 92 / Bisbee Rd	3,971	4,033	8,004	7	8	52	480	488	12.1	12,646
100868	SR 80	343.3	SR 92 / Bisbee Rd	345	345.38	Warren Cutoff / Arizona St	2,313	2,809	5,122	2	10	52	435	297	14.3	7,427
100869	SR 80	345.38	Warren Cutoff / Arizona St	347.1	348.06	Double Adobe Rd	2,873	2,990	5,863	3	10	53	568	264	14.2	8,208
100870	SR 80	348.06	Double Adobe Rd	349	356.47	Paul Spur Rd	2,006	2,066	4,072	1	9	55	407	187	14.6	5,375
100871	SR 80	356.47	Paul Spur Rd	359.5	364.67	US 191 - West of Douglas	2,302	2,285	4,587	1	10	52	445	208	14.2	5,504
100872	SR 80	364.67	US 191 - West of Douglas	365	365.1	Chino Rd	4,263	4,196	8,459	3	10	56	482	711	14.1	11,800
100873	SR 80	365.1	Chino Rd	365.4	365.58	Pirtleville Rd	2,944	3,436	6,380	1	9	55	217	632	13.3	8,581
100874	SR 80	365.58	Pirtleville Rd	366	366.12	US 191B / G Ave - Douglas	4,464	4,867	9,331	1	9	56	448	718	12.5	12,504
100876	SR 80	366.12	US 191B / G Ave - Douglas	367	367.11	A Ave / Leslie Canyon / Fairgrounds Rd	2,803	2,655	5,458	1	8	50	535	366	16.5	7,477
100878	SR 80	367.11	A Ave / Leslie Canyon / Fairgrounds Rd	369	369.51	Washington Ave - East of Douglas	960	931	1,891	1	9	51	378	62	23.3	2,591
100879	SR 80	369.51	Washington Ave - East of Douglas	377	415.39	New Mexico State Line	288	288	576	1	11	55	56	67	21.4	801
100883	SR 82	1.19	SB 19 - Nogales	1.6	1.66	Thelma St	3,754	2,423	6,177	1	10	54	321	131	7.3	10,099
100884	SR 82	1.66	Thelma St	2.9	2.95	Old Patagonia Rd	2,587	2,541	5,128	1	9	61	431	142	11.2	7,384
100886	SR 82	2.95	Old Patagonia Rd	4.9	5.87	South River Rd/Duquesne Rd.	1,395	1,405	2,800	1	8	67	271	126	14.2	4,032
100887	SR 82	5.87	South River Rd/Duquesne Rd.	9	12.14	Patagonia Lake Rd	957	925	1,882	1	8	59	188	138	17.3	2,823
100888	SR 82	12.14	Patagonia Lake Rd	17	19.47	3rd Ave	976	942	1,918	1	8	53	266	127	20.5	3,529
100889	SR 82	19.47	3rd Ave	30.97	32.37	SR 83 - Sonoita	1,061	1,058	2,119	1	9	50	205	96	14.2	6,357
100890	SR 82	32.37	SR 83 - Sonoita	46	49.9	Mustang Heights Rd	1,048	1,068	2,116	1	8	52	176	177	16.7	4,867
100891	SR 82	49.9	Mustang Heights Rd	51	51.6	SR 90	2,272	1,759	4,031	1	8	72	233	181	10.3	9,271
100892	SR 82	51.6	SR 90	60	67.48	SR 80	812	898	1,710	1	8	55	190	189	22.2	3,813
100894	SR 83	3.19	Parker Canyon Lake	12	20.2	Vaughn Loop Rd	-	-	133	3	15	55	13	6	14.3	269
100895	SR 83	20.2	Vaughn Loop Rd	25	27.46	South Elgin Rd	275	317	592	1	12	56	35	7	7.1	1,196
100896	SR 83	27.46	South Elgin Rd	29.32	35.81	SR 82 - Sonoita	698	688	1,386	1	13	56	135	61	14.1	1,968
100897	SR 83	35.81	SR 82 - Sonoita	45.54	55.36	Sahuarita Rd	1,137	1,164	2,301	1	12	53	163	31	8.4	3,152
100898	SR 83	55.36	Sahuarita Rd	58.1	58.76	I-10 (Exit 281)	2,186	1,438	3,624	1	10	79	318	112	11.9	4,313
100899	SR 84	155.13	I-8 (Exit 151)	157	160.88	SR 347 / Maricopa Rd	851	1,162	2,013	1	10	79	143	195	16.8	2,395
100900	SR 84	160.88	SR 347 / Maricopa Rd	162	165.9	Stanfield Rd	1,372	1,247	2,619	1	9	60	283	170	17.3	7,857
100901	SR 84	165.9	Stanfield Rd	171	173.14	Candlestick Rd	1,675	1,300	2,975	1	8	63	360	129	16.4	8,925
100902	SR 84	173.14	Candlestick Rd	174	175.96	Burris Rd - Casa Grande	2,455	2,423	4,878	1	9	60	379	124	10.3	14,634
100903	SR 84	175.96	Burris Rd - Casa Grande	176	176.95	Thornton Rd	2,582	2,649	5,231	1	9	58	306	150	8.7	15,693
100905	SR 84	176.95	Thornton Rd	177.3	177.97	SR 287 / SR 387	4,254	4,909	9,163	2	9	61	733	251	10.7	27,489
100907	SR 84	195.22	SR 87 / County Control (MP 195.20)	195.4	196.44	I-10 (Exit 211)	1,102	1,377	2,479	1	9	65	252	180	17.4	7,437
100908	SR 85 (1)	0	SB 8 (3) - Gila Bend	0.34	0.58	I-8 (Exit 116)	1,590	1,437	3,027	1	7	70	116	299	13.7	4,268
100909	SR 85 (1)	0.58	I-8 (Exit 116)	2	3.17	Gila Bend Air Base Access Rd	1,094	998	2,092	1	8	73	167	156	15.4	2,950
100910	SR 85 (1)	3.17	Gila Bend Air Base access Rd	35.18	38.11	Hayworth Rd	595	548	1,143	1	11	71	66	51	10.2	1,612
100911	SR 85 (1)	38.11	Hayworth Rd	40	40.59	Rasmussen Rd	1,176	976	2,152	1	10	79	109	52	7.5	3,034
100912	SR 85 (1)	40.59	Rasmussen Rd	41.75	42.3	La Mina Ave / Plaza St (SE)	1,622	1,410	3,032	1	9	69	209	43	8.3	4,305

Loc ID	Route	BMP	Start	TCS MP	EMP	End	Pos Dir AADT	Neg Dir AADT	AADT 2018	AADT Derivation	K Factor %	D Factor %	AADT Single Trucks	AADT Combo Trucks	T Factor %	2040 Future AADT	
100913	SR 85 (1)	42.3	La Mina Ave / Plaza St (SE)	42.36	42.5	Ajo Well No. 1 Rd	1,371	1,134	2,505		1	12	69	178	42	8.8	3,607
100914	SR 85 (1)	42.5	Ajo Well No. 1 Rd	52	53.06	SR 86 - Why	1,301	1,251	2,552		1	14	53	137	35	6.7	3,598
100915	SR 85 (1)	53.06	SR 86 - Why	64	75.29	Puerto Blanco Dr / Organ Pipe Nat'l Monument	667	652	1,319		1	12	52	24	18	3.2	1,873
100916	SR 85 (1)	75.29	Puerto Blanco Rd / Organ Pipe National Monument	78	80.69	International Border & POE - Lukeville	1,636	1,293	2,929		7	16	70	284	132	14.2	4,159
100917	SR 85 (2)	120.32	SR-8 (3) - Gila Bend	120.65	120.67	Maricopa Rd	7,961	7,427	15,388		1	7	54	846	3,847	30.5	26,313
100918	SR 85 (2)	120.67	Maricopa Rd	121.58	122.66	MP 122.66	5,686	5,437	11,123		3	7	52	1,013	3,516	40.7	17,796
100919	SR 85 (2)	122.66	MP 122.66	127	130.85	MP 130.85	5,500	5,500	11,000		2	13	53	780	2,981	34.2	17,820
100920	SR 85 (2)	130.85	MP 130.85	137.87	138.36	Prison Rd	5,574	5,500	11,074		2	10	50	724	2,980	33.4	17,940
100921	SR 85 (2)	138.36	Prison Rd	140	140.53	Komatke Rd	7,736	9,283	17,019		1	8	55	408	3,574	23.4	27,741
100922	SR 85 (2)	140.53	Komatke Rd	141	150.49	Buckeye Rd - Buckeye	7,356	7,034	14,390		1	9	53	355	3,494	26.7	24,607
100923	SR 85 (2)	150.49	Buckeye Rd - Buckeye	150.72	151	Baseline Rd	9,468	10,492	19,960		1	8	55	898	3,892	24	34,132
100924	SR 85 (2)	151	Baseline Rd	151.09	152	Southern Ave	6,744	6,700	13,444		2	8	57	417	3,850	31.7	19,359
100925	SR 85 (2)	152	Southern Ave	152.8	153	Broadway Rd	9,309	9,100	18,409		2	9	63	920	3,682	25	31,848
100926	SR 85 (2)	153	Broadway Rd	153.64	154.52	I-10 (Exit 112)	9,210	9,094	18,304		1	9	54	951	3,630	25	28,829
100931	SR 86	53.16	SR 85 - Why	74.11	92.28	BIA Rte 15 - Quijotoa	-	-	1,087		1	14	55	101	20	11.1	1,511
100932	SR 86	92.28	BIA Rte 15 - Quijotoa	103	114.06	Sells Rd South	937	909	1,846		1	10	77	205	48	13.7	2,529
100933	SR 86	114.06	Sells Rd South	124	134.36	SR 386	1,538	1,499	3,037		1	11	80	319	48	12.1	4,191
102297	SR 86	134.36	SR 386	138	140.61	San Pedro Rd	1,242	-	2,484		12	12	82	126	28	6.2	3,279
102298	SR 86	140.61	San Pedro Rd	141	141.79	Coleman Rd	1,312	1,333	2,645		1	10	82	150	38	7.1	3,491
102299	SR 86	141.79	Coleman Rd	146	146.02	Hayhook Ranch Rd	1,312	1,333	2,645		1	11	85	84	34	4.5	3,465
100934	SR 86	146.02	Hayhook Ranch Rd	148.29	150.42	SR 286 - Robles Junction	1,509	1,489	2,998		1	11	79	147	27	5.8	4,317
100935	SR 86	150.42	SR 286 - Robles Junction	154	159.83	Valencia Rd	-	-	7,182		3	7	60	575	287	12	10,055
100936	SR 86	159.83	Valencia Rd	161	163.42	San Joaquin Rd	-	-	6,267		3	8	61	533	313	13.5	8,649
100937	SR 86	163.42	San Joaquin Rd	165	166.28	Kinney Rd	9,106	8,529	17,635		7	9	76	1,263	1,411	15.2	20,457
100938	SR 86	166.28	Kinney Rd	167.97	169.85	La Cholla Blvd	16,137	15,783	31,920		1	9	65	990	3,831	15.1	40,858
100939	SR 86	169.85	La Cholla Blvd	170	170.35	Mission Rd	-	-	30,847		3	8	59	1,569	4,010	18.1	39,176
100941	SR 86	170.35	Mission Rd	171.05	171.62	I-19 (Exit 99)	18,757	18,500	37,257		2	7	52	825	3,353	11.2	46,944
100944	SR 87	115.77	SR 84 - Picacho	116.5	116.9	Alsdarf Rd	1,370	1,439	2,809		1	10	55	211	287	17.7	5,899
100945	SR 87	116.9	Alsdarf Rd	117	117.9	Battaglia Dr	1,099	1,379	2,478		1	9	55	382	182	22.8	2,478
100946	SR 87	117.9	Battaglia Dr	119.5	120.9	Arica Rd	1,950	1,816	3,766		1	9	60	316	240	14.8	11,298
100947	SR 87	120.9	Arica Rd	121	123.9	Selma Hwy	2,289	2,206	4,495		1	9	58	482	248	16.2	13,485
100948	SR 87	123.9	Selma Hwy	125	125.92	SR 287 / Steele Rd	2,271	2,538	5,309		1	8	53	267	299	10.7	15,927
100949	SR 87	125.92	SR 287 / Steele Rd	127	127.9	Kleck Rd	3,805	3,659	7,464		1	8	50	501	293	10.6	22,392
100950	SR 87	127.9	Kleck Rd	128	128.9	Randolph Rd	-	-	6,645		1	5	63	294	220	7.7	19,936
100951	SR 87	128.9	Randolph Rd	130	130.4	Barlett Rd	3,618	3,556	7,174		1	8	60	541	382	12.9	15,711
100952	SR 87	130.4	Barlett Rd	131	131.5	Martin Rd	2,891	2,891	5,782		12	8	55	632	305	16.2	17,346
100953	SR 87	131.5	Martin Rd	132.2	132.51	Coolidge Ave	-	-	14,000		2	9	53	629	2,435	21.9	42,000
100955	SR 87	132.51	Coolidge Ave	133	133.05	Central Ave	6,236	6,192	12,428		7	9	52	1,251	541	14.4	37,284
100957	SR 87	133.05	Central Ave	133.6	133.76	Vah Ki Inn Rd	6,693	8,375	15,068		1	9	55	851	443	8.6	45,204
100959	SR 87	133.76	Vah Ki Inn Rd	134.1	134.75	SR 287	7,813	7,798	15,611		3	8	51	420	329	4.8	46,833
100961	SR 87	134.75	SR 287	135	135.65	Kenworthy Rd	4,561	4,700	9,261		7	7	52	583	258	9.1	25,005
100962	SR 87	135.65	Kenworthy Rd	136	136.62	Skousen Rd	4,551	4,722	9,273		1	7	53	516	271	8.5	24,759
100963	SR 87	136.62	Skousen Rd	137.9	139.1	Curry Rd	4,506	4,685	9,191		1	8	52	279	283	6.1	18,566
100964	SR 87	139.1	Curry Rd	140	141.48	SR 387	4,416	4,568	8,984		1	9	54	488	319	9	19,405
100965	SR 87	141.48	SR 387	145	146.06	SR 187	3,323	3,382	6,705		1	8	61	370	177	8.2	12,807
100966	SR 87	146.06	SR 187	148.5	151.29	Sacaton Rd / BIA Rte 7	3,664	3,848	7,512		1	9	51	367	227	7.9	16,902
100967	SR 87	151.29	BIA Rte 7 / Sacaton Rd	159	159.7	SR 587	2,005	2,029	4,034		1	12	76	144	123	6.6	7,947

Loc ID	Route	BMP	Start	TCS MP	EMP	End	Pos Dir AADT	Neg Dir AADT	AADT 2018	AADT Derivation	K Factor %	D Factor %	AADT Single Trucks	AADT Combo Trucks	T Factor %	2040 Future AADT	
100968	SR 87	159.7	SR 587	160	160.67	Riggs Rd	6,262	6,337	12,599		3	9	55	391	630	8.1	18,143
100969	SR 87	160.67	Riggs Rd	161	161.68	Chandler Heights Rd	8,453	8,561	17,014		1	8	54	860	674	9	30,965
100970	SR 87	161.68	Chandler Heights Rd	162.1	162.67	Ocotillo Rd	12,185	12,116	24,301		1	8	50	754	1,823	10.6	46,901
100971	SR 87	170.2	Western Canal	170.43	171.72	Baseline Rd	17,546	17,276	34,822		1	10	51	1,230	352	4.5	38,652
100972	SR 87	172.33	Iron Ave (MP 172.33)	172.4	172.57	MP 172.57 (South of Holmes Ave)	20,791	19,957	40,748		1	8	51	1,834	1,019	7	46,045
100973	SR 87	176.74	McKellips Rd	176.85	177.04	SR 202	9,617	8,092	17,709		1	10	58	1,063	567	9.2	27,095
100974	SR 87	177.04	SR 202	177.25	177.98	North of McDowell Rd	9,080	9,596	18,676		1	8	52	1,307	616	10.3	26,146
100976	SR 87	177.98	North of McDowell Rd	178.75	179	South of Center St.	8,168	8,279	16,447		1	9	53	1,316	576	11.5	21,710
100977	SR 87	179	South of Center St.	179	179.8	Mesa Drive	7,911	7,913	15,824		1	9	53	949	522	9.3	30,224
100978	SR 87	179.8	Mesa Drive	180.7	182.1	N. Gilbert Rd.	8,034	8,013	16,047		1	9	51	802	497	8.1	22,466
100979	SR 87	182.1	N. Gilbert Rd.	182.57	188.83	Shea Blvd	16,002	15,322	31,324		1	12	68	1,714	1,374	9.9	43,227
100980	SR 87	188.83	Shea Blvd	189.2	190.84	Fort McDowell Rd	6,492	6,794	13,286		7	9	54	411	598	7.6	20,992
100981	SR 87	190.84	Fort McDowell Rd	199.3	199.14	Saguaro Lake Rd / Bush Hwy (USFS Rte 206)	6,229	6,213	12,442		1	7	56	1,187	617	14.5	17,419
100982	SR 87	199.14	Saguaro Lake Rd / Bush Hwy (USFS Rte 206)	202	217.92	Sunflower Rd	5,955	6,324	12,279		1	9	58	982	675	13.5	16,577
100983	SR 87	217.92	Sunflower Rd	235	235.69	SR 188	6,152	6,081	12,233		1	16	69	782	663	11.8	16,576
100984	SR 87	235.69	SR 188	237.6	239.45	Gisela Rd	6,267	6,439	12,706		1	9	57	1,233	572	14.2	17,153
100985	SR 87	239.45	Gisela Rd	248.9	251.28	Round Valley Rd / Ridge Ln	7,023	7,188	14,211		1	8	56	1,379	639	14.2	17,622
100986	SR 87	251.28	Round Valley Rd / Ridge Ln	251.6	251.85	Main St - Payson	8,291	8,517	16,808		1	8	52	718	765	8.8	20,674
100988	SR 87	251.85	Main St - Payson	252	252.58	SR 260 / Longhorn Rd	12,985	10,045	23,030		7	9	51	806	667	6.4	27,636
100990	SR 87	252.58	SR 260 / Longhorn Rd	253	254.58	Houston Mesa Rd	9,470	8,626	18,096		7	9	51	633	524	6.4	20,629
100992	SR 87	254.58	Houston Mesa Rd	258.3	267.6	Hardscrabble Rd - Pine	2,748	2,841	5,589		1	8	56	543	253	14.2	6,707
100993	SR 87	267.6	Hardscrabble Rd - Pine	267.6	268.08	Pine Creek Canyon Dr	-	-	6,137		3	7	55	596	276	14.2	7,549
100994	SR 87	268.08	Pine Creek Canyon Dr	269	270.69	Strawberry Dr	2,016	1,968	3,984		1	10	53	387	180	14.2	4,900
100995	SR 87	270.69	Strawberry Dr	275.5	278.51	SR 260	1,166	1,168	2,334		1	20	55	193	68	11.2	3,548
100996	SR 87	278.51	SR 260 West	285	290.45	Lake Mary Rd / Clints Well Rd	-	-	1,457		3	10	53	142	51	13.2	1,923
100997	SR 87	290.45	Lake Mary Rd / Clints Well Rd	299.8	304.5	Enchanted Ln	330	605	935		1	11	66	91	33	13.3	1,440
100998	SR 87	304.5	Enchanted Ln	316.8	340.94	SR 99	282	295	577		1	12	56	56	21	13.3	952
100999	SR 87	340.94	SR 99	341.5	342.23	SB 40	790	782	1,572		1	9	66	213	68	17.9	1,745
101000	SR 87	343.56	SB 40 (6) - East end of Winslow	344	345.76	I-40 (Exit 257) Polaca TI	455	516	971		1	10	53	153	46	20.5	1,622
101001	SR 87	345.76	I-40 (Exit 257) - Polaca TI	346.2	347.16	Winslow-Polacca Rd	1,341	1,504	2,845		1	14	77	217	15	8.2	5,434
102300	SR 87	365.78	BIA Rte 60	366	375.58	BIA Rte 15	544	465	1,009		1	10	72	98	36	13.3	2,482
101002	SR 87	347.16	Winslow-Polacca Rd	355	365.78	BIA Rte 60	1,122	1,098	2,220		1	11	59	83	15	4.4	4,240
101003	SR 87	375.58	BIA Rte 15	391	406.04	SR 264 - Second Mesa	-	-	1,769		3	10	56	145	41	10.5	3,839
101019	SR 88	193.85	US 60 (Exit 196)	194.2	194.37	Southern Ave	7,005	7,473	14,478		1	8	54	968	317	8.9	31,272
101021	SR 88	194.37	Southern Ave	194.76	195.36	Broadway Rd	5,614	5,906	11,627		1	8	50	581	291	7.5	34,881
101023	SR 88	195.36	Broadway Rd	195.5	195.7	Old West Hwy / West Apache Trl	5,022	5,109	10,131		1	9	51	557	274	8.2	26,645
101025	SR 88	195.7	Old West Hwy / West Apache Trail	195.9	196.13	Idaho Rd	4,688	4,639	9,327		7	10	56	326	420	8	27,981
101027	SR 88	196.13	Idaho Rd	196.3	196.48	Superstition Blvd	1,456	1,402	2,858		1	10	51	143	71	7.5	8,574
101029	SR 88	196.48	Superstition Blvd	197	197.46	Tomohawk Rd	1,659	1,418	3,077		1	10	56	252	60	10.1	9,231
101030	SR 88	197.46	Tomahawk Rd	197.6	198.15	Cortez Rd	1,659	1,682	3,341		1	10	60	103	37	4.2	10,023
101031	SR 88	198.15	Cortez Rd	198.8	199.31	Mountain View Rd	1,461	1,405	2,866		1	10	54	180	43	7.8	8,598
101032	SR 88	199.31	Mountain View Rd	201	211.04	Canyon Lake Trailhead Camp Access Rd	1,002	892	1,894		1	12	67	88	28	6.1	5,682
101033	SR 88	211.04	Canyon Lake Trailhead Camp Access Rd	212	213.39	Tortilla Flat	532	443	975		1	8	53	175	12	19.2	1,287
101034	SR 88	213.39	Tortilla Flat	228	229.24	Apache Lake Access Rd	132	97	229		1	16	62	12	3	6.3	382
101035	SR 88	229.24	Apache Lake Recreation Area access Rd	240.6	242.23	SR 188 (Roosevelt Dam)	132	97	229		1	17	56	12	3	6.3	513
101036	SR 89	258.09	US 93 - North of Wickenburg	262.8	263.9	Escapees Way	1,463	1,369	2,832		1	9	61	292	75	13	4,729
102301	SR 89	263.9	Escapees Way	267	268.01	SR 71	-	-	2,157		3	11	57	220	58	12.9	3,343

Loc ID	Route	BMP	Start	TCS MP	EMP	End	Pos Dir AADT	Neg Dir AADT	AADT 2018	AADT Derivation	K Factor %	D Factor %	AADT Single Trucks	AADT Combo Trucks	T Factor %	2040 Future AADT
101037	SR 89	268.01	SR 71	274.2	277.31	Shrine Rd (St Joseph Shrine)	908	908	1,816	1	8	50	370	82	24.9	2,951
101038	SR 89	277.31	Shrine Rd (St Joseph Shrine)	279	280.98	Hays Ranch Rd	1,140	1,146	2,286	1	9	50	272	88	15.7	3,703
101039	SR 89	280.98	Hays Ranch Rd	288.9	289.03	Kirkland Rd / Thompson Valley Rd	843	873	1,716	1	9	54	194	86	16.3	2,162
101040	SR 89	289.03	Kirkland Rd / Thompson Valley Rd	289.47	295.02	Walden Blvd	568	506	1,074	1	17	73	63	10	6.8	1,439
101041	SR 89	295.02	Walden Blvd	296	307.61	Ponderosa Park Rd	620	668	1,288	1	8	55	203	5	16.1	1,906
101042	SR 89	307.61	Ponderosa Park Rd	308	308.97	Hidden Valley Dr	1,217	1,158	2,375	1	9	64	136	2	5.8	5,439
101043	SR 89	308.97	Hidden Valley Dr	309.3	309.75	Club House Dr	2,167	2,245	4,412	1	10	53	219	21	5.4	8,780
101044	SR 89	309.75	Club House Dr	309.9	310.31	Copper Basin Rd	3,100	3,138	6,238	1	9	55	603	44	10.4	12,226
101045	SR 89	312.38	Aven Dr	312.4	312.49	Gurley St	12,488	12,555	25,043	1	9	53	876	726	6.4	33,808
101047	SR 89	312.49	Gurley St	312.7	312.77	SR 69 - Prescott	-	-	28,327	3	8	56	991	821	6.4	41,074
101048	SR 89	312.77	SR 69 - Prescott	312.9	313.92	Yavpe Connector	-	-	16,206	3	10	68	568	470	6.4	23,175
101325	SR 89	313.92	Yavpe Connector	314.57	314.57	Roser St	6,818	7,081	13,899	1	9	60	781	188	7	19,181
101326	SR 89	314.57	Roser St	314.97	314.97	Prescott Lake Pkwy / Gateway Blvd	7,685	7,685	15,370	12	10	59	538	445	6.4	22,133
102329	SR 89	314.97	Prescott Lake Pkwy / Gateway Blvd	316.21	316.21	Watson Lake Park Rd	8,400	8,500	17,000	2	8	58	1,341	330	9.8	25,840
101049	SR 89	316.28	Watson Lake Park Rd	317.57	317.57	Old Hwy 89 Access	8,676	8,927	17,603	1	8	59	1,307	215	8.6	24,996
102330	SR 89	317.57	Old Hwy 89 Access	318	319.18	SR 89A	8,600	8,900	17,500	2	8	62	1,171	264	8.2	24,675
101050	SR 89	319.18	SR 89A	319.6	319.77	Perkins Dr.	9,358	8,922	18,280	1	8	68	2,101	651	15.1	24,861
101051	SR 89	319.77	Perkins Dr.	319.9	320.04	Willow Creek Rd / MacCurdy Dr Airport	10,684	10,103	20,787	1	8	65	727	603	6.4	28,270
101052	SR 89	320.04	Willow Creek Rd / MacCurdy Dr Airport	322.24	325.18	Outer Loop Rd/Road 4 South	11,457	8,063	19,520	1	13	54	1,893	704	13.3	26,157
101053	SR 89	325.18	Outer Loop Rd/Road 4 South	326	326.19	Road 2 South	11,793	11,519	23,312	1	10	65	1,563	456	8.7	27,741
101054	SR 89	326.19	Road 2 South	326.9	327.19	Center St.	12,479	14,195	26,674	1	9	55	934	774	6.4	32,009
101055	SR 89	327.19	Center St.	327.4	327.69	Road 1 North	11,236	10,861	22,097	1	8	62	994	514	6.8	26,295
101057	SR 89	327.69	Road 1 North	328	328.2	Road 2 North	12,236	11,642	23,878	1	8	64	836	693	6.4	27,937
101059	SR 89	328.2	Road 2 North	329	329.2	Road 3 North	-	-	21,449	3	6	54	750	621	6.4	27,884
101061	SR 89	329.2	Road 3 North	330	330.2	Road 4 North	6,233	6,333	12,566	1	7	59	1,267	570	14.6	16,084
101062	SR 89	330.2	Road 4 North	334	337.7	Big Chino Rd.	6,803	6,883	13,686	1	7	59	1,248	571	13.3	16,560
101063	SR 89	337.7	Big Chino Rd.	338	338.8	San Francisco St	2,894	2,857	5,751	1	8	51	622	498	19.5	7,246
101064	SR 89	338.8	San Francisco St	342	346.52	Drake Rd	1,824	1,777	3,601	1	8	64	393	491	24.5	9,975
101065	SR 89	346.52	Drake Rd	358.99	363.89	I-40 (Exit 146) - East end of Ash Fork	1,750	1,710	3,460	1	11	56	338	260	17.3	7,612
101069	SR 90	289.54	I-10 (Exit 302)	294	298.5	Karthner Maverns main entrance	5,050	4,266	9,316	1	7	52	768	367	12.2	14,347
101070	SR 90	298.5	Karthner Caverns main entrance	305.6	308.39	SR 82 - Huachuca City	4,642	4,986	9,628	1	10	54	751	481	12.8	14,875
101071	SR 90	308.39	SR 82 - Huachuca City	310	311.96	Yuma St	7,303	7,303	14,606	12	9	60	1,002	546	10.6	28,044
101072	SR 90	311.96	Yuma St	313	313.6	Fort Huachuca (North Gate)	7,768	7,806	15,574	1	8	59	952	547	9.6	21,336
101074	SR 90	313.6	Fort Huachuca (North gate)	317	317.2	Ft Huachuca (East Gate)	9,746	10,143	19,889	3	9	60	616	796	7.1	27,248
101076	SR 90	317.2	7th St	318	318.6	7th St	7,512	7,787	15,299	3	9	77	1,382	403	11.7	20,959
101078	SR 90	318.6	7th St	319	319.6	Coronado Dr / San Xavier Rd	8,077	8,235	16,312	3	11	61	790	376	7.1	22,348
101080	SR 90	319.6	Coronado Dr / San Xavier Rd	320	321.25	Charleston Rd / Martin Luther King Pkwy	7,430	8,016	15,446	3	7	57	1,351	425	11.5	18,227
101082	SR 90	321.25	Charleston Rd / Martin Luther King Pkwy	324.42	321.52	SR 92 / Frye Blvd	9,966	9,926	19,892	1	9	51	616	796	7.1	26,059
101084	SR 90	321.52	SR 92 / Fry Blvd - Sierra Vista	322	322.48	Giulio Cesare Ave / Avenida Del Sol	8,989	8,925	17,914	1	8	56	993	444	8	24,721
101086	SR 90	322.48	Giulio Cesare Ave / Avenida Del Sol	324	325.51	Moson Rd	4,482	4,544	9,026	1	8	61	473	227	7.8	11,283
101087	SR 90	325.51	Moson Rd	331	336.4	SR 80	2,237	2,245	4,482	1	8	56	181	164	7.7	5,603
101091	SR 92	321.21	SR 90 / Fry Blvd - Sierra Vista	321.8	321.8	East Foothills Dr	10,878	11,448	22,326	1	8	51	1,005	536	6.9	26,121
101093	SR 92	321.8	East Foothills Dr	322	322.2	Snyder Rd	10,990	11,440	22,430	1	3	71	1,166	493	7.4	29,608
101095	SR 92	322.2	Snyder Blvd	322.6	322.71	Avenida Cochise	11,030	10,924	21,954	1	7	52	1,098	439	7	29,199
101097	SR 92	322.71	Avenida Cochise	324	324.23	Buffalo Soldier Trail	13,410	8,705	22,115	1	8	69	1,017	398	6.4	23,000
101099	SR 92	324.23	Buffalo Soldier Trail	325	325.22	Glenn Avenue/Kachina Trail	9,906	10,180	20,086	1	8	63	1,247	673	9.6	26,112
101101	SR 92	325.22	Glenn Avenue/Kachina Trail	326	327.23	Ramsey Canyon / Ramsey Rd	10,059	10,332	20,391	1	9	62	785	428	6	26,508

Loc ID	Route	BMP	Start	TCS MP	EMP	End	Pos Dir AADT	Neg Dir AADT	AADT 2018	AADT Derivation	K Factor %	D Factor %	AADT Single Trucks	AADT Combo Trucks	T Factor %	2040 Future AADT	
101103	SR 92	327.23	Ramsey Canyon / Ramsey Rd	328	329.44	Hereford Rd - Nicksville	5,280	5,244	10,524		1	9	63	358	168	5	13,681
101105	SR 92	329.44	Hereford Rd - Nicksville	333.23	339.9	Palominas Rd	2,350	2,279	4,629		1	10	53	61	31	2	6,110
101106	SR 92	339.9	Palominas Rd	345	346.95	Rio Vista Rd	1,803	1,695	3,498		1	9	53	122	164	8.2	6,471
101107	SR 92	346.95	Rio Vista Rd	350	350.18	Willson Rd	1,928	1,829	3,757		1	8	55	461	57	13.8	4,321
101108	SR 92	350.18	Willson Rd	352	352.49	Naco Highway	2,370	2,605	4,975		1	9	54	348	100	9	9,204
101109	SR 92	352.49	Naco Highway	353.3	354.56	School Terrace Rd	-	-	8,103		3	10	55	284	284	7	10,534
101110	SR 92	354.56	School Terrace Rd	354.9	355.11	SR 80 / Bisbee Rd - Bisbee	3,186	3,142	6,328		1	9	56	316	285	9.5	8,226
101111	SR 95	104.51	US 95 South / SB 10 - Quartzsite	109.4	110.62	Tyson Dr	2,975	2,956	5,931		3	10	57	297	297	10	6,939
101113	SR 95	110.62	Tyson Dr	115.33	131.69	SR 72	1,380	1,360	2,740		1	17	51	174	335	18.6	3,041
101114	SR 95	131.69	SR 72	137	139.78	Burns Rd	2,272	2,992	5,265		1	7	51	253	579	15.8	5,897
101115	SR 95	139.78	Burns Rd	142	142.9	Poston Rd / Ehrenberg Rd - Parker	3,129	3,161	6,290		12	13	55	252	598	13.5	7,234
101116	SR 95	142.9	Poston Rd / Ehrenberg Rd - Parker	143.6	143.93	SR 955 (1) - Parker	5,741	5,377	11,118		1	8	54	1,056	667	15.5	13,008
101118	SR 95	143.93	SR 955 (1) - Parker	144.09	144.48	Bronco Ave	8,329	5,805	14,134		1	8	60	1,555	707	16	16,678
101120	SR 95	144.48	Bronco Ave	145	145.58	Bluewater Dr	6,187	6,134	12,321		1	10	54	616	678	10.5	16,141
101122	SR 95	145.58	Bluewater Dr	148	148.34	Beacon Rd / Old Hwy 95 (South Leg)	4,523	4,345	8,868		3	12	56	319	754	12.1	12,415
101124	SR 95	148.34	Beacon Rd / Old Hwy 95 (South Leg)	149	151.52	Golf Course Dr	2,945	2,914	5,859		1	8	51	229	439	11.4	8,203
101126	SR 95	151.52	Golf Course Dr	152	153.54	Resort Rd	3,016	3,010	6,026		12	10	61	289	422	11.8	8,677
101127	SR 95	153.54	Resort Rd	154	154.73	Old Hwy 95 (North Leg)	3,193	3,210	6,403		3	7	54	199	384	9.1	10,886
101128	SR 95	154.73	Old Hwy 95 (North Leg)	155	158.78	SR 955 (2) / Parker Dam Access Rd	2,858	2,850	5,708		2	12	64	727	418	20.1	7,592
101129	SR 95	158.78	SR 955 (2) / Parker Dam Access Rd	163.1	167.68	SB 95 (3) / Cat Tail Cove Access Rd	3,013	3,041	6,054		1	7	51	230	484	11.8	11,926
101130	SR 95	167.68	SR 955 (3) / Cat Tail Cove Access Rd	171	171.38	MP 171.375	2,435	3,291	5,726		1	7	64	235	487	12.6	6,070
101131	SR 95	171.38	MP 171.375	175	175.71	Sara Pkwy	2,491	3,331	5,822		1	7	58	215	466	11.7	6,171
101132	SR 95	175.71	Sara Pkwy	176.8	177.03	McCulloch Blvd	3,233	3,000	6,233		1	8	51	218	467	11	6,607
101133	SR 95	177.03	McCulloch Blvd	177.6	177.95	Oro Grande Blvd	5,309	5,357	10,666		2	9	63	747	480	11.5	14,506
101135	SR 95	177.95	Oro Grande Blvd	178.5	178.99	Acoma Blvd	6,359	6,803	13,162		1	7	55	658	526	9	18,164
101137	SR 95	178.99	Acoma Blvd	180	180.76	Varden Dr	7,961	7,680	15,641		1	8	51	626	547	7.5	22,367
101139	SR 95	180.76	Varden Dr	181.46	182.26	Swanson Ave	10,421	10,357	20,778		3	9	56	727	644	6.6	29,089
101141	SR 95	182.26	Swanson Ave	182.3	182.48	Mesquite Ave	11,328	11,225	22,553		3	8	67	677	631	5.8	31,348
101143	SR 95	182.48	Mesquite Ave	183	183.09	Palo Verde Blvd (South)	12,200	12,500	24,700		2	9	51	690	865	6.3	35,568
101145	SR 95	183.09	Palo Verde Blvd (South)	183.8	183.84	Industrial Blvd	13,088	12,899	25,987		3	8	52	780	780	6	36,642
101147	SR 95	183.84	Industrial Blvd	184.2	184.49	Kiowa Ave	11,473	11,450	22,923		3	8	64	803	665	6.4	30,488
101149	SR 95	184.49	Kiowa Ave	185	185.46	Palo Verde Blvd (North)	9,837	10,128	19,965		3	9	51	739	399	5.7	26,553
101151	SR 95	185.46	Palo Verde Blvd (North)	186	187.64	Chenoweth Dr	10,320	10,191	20,511		1	8	51	759	451	5.9	25,639
101153	SR 95	187.64	Chenoweth Dr	187.7	189.87	London Bridge Rd	7,974	7,522	15,496		3	10	53	620	589	7.8	18,983
101154	SR 95	189.87	London Bridge Rd	194	197	Lake Havasu Heights Rd	5,317	4,633	9,950		1	6	55	753	714	14.7	12,040
101155	SR 95	197	Lake Havasu Heights Rd	201.9	202.01	I-40 (Exit 9)	4,284	3,700	7,984		1	8	55	475	519	12.4	9,661
101156	SR 95	226.08	California State Line - East of Needles	226.7	226.82	Plantation Dr	5,591	5,930	11,521		1	6	53	2,418	508	25.4	15,323
101157	SR 95	226.82	Plantation Dr	227	227.33	Mohave Valley Rd (Ex SR-95 South)	5,690	5,984	11,674		1	6	50	1,533	462	17.1	16,460
101158	SR 95	227.33	Mohave Valley Rd (Ex SR-95 South)	229	229.3	Laguna Rd	6,889	6,617	13,506		1	6	54	1,331	491	13.5	18,638
101160	SR 95	229.3	Laguna Rd	230	230.3	Willow Dr	7,899	8,076	15,975		1	7	50	1,278	1,198	15.5	22,046
101162	SR 95	230.3	Willow Dr	231	231.3	King St	-	-	14,134		3	9	51	1,300	1,102	17	19,364
101164	SR 95	231.3	King St	234	234.37	Boundary Cone Rd	7,993	7,114	15,107		1	8	53	1,329	1,057	15.8	20,999
101166	SR 95	234.37	Boundary Cone Rd	235	236.96	Hammer Ln	-	-	17,884		3	7	51	769	1,520	12.8	24,859
101168	SR 95	236.96	Hammer Ln	238	238.9	Valencia Rd	14,510	15,066	29,576		1	8	53	2,100	739	9.6	41,111
101170	SR 95	238.9	Valencia Rd	240	240.7	Bullhead Pkwy	-	-	42,552		3	8	52	2,596	894	8.2	58,722
101172	SR 95	240.7	Bullhead Pkwy	241.3	241.45	Rainbow Dr	13,460	13,671	27,131		1	9	53	1,655	597	8.3	27,131
101173	SR 95	241.45	Rainbow Dr	242	242.8	Mohave Rd	13,677	13,848	27,525		1	8	53	1,596	633	8.1	38,535

Loc ID	Route	BMP	Start	TCS MP	EMP	End	Pos Dir AADT	Neg Dir AADT	AADT 2018	AADT Derivation	K Factor %	D Factor %	AADT Single Trucks	AADT Combo Trucks	T Factor %	2040 Future AADT	
101174	SR 95	242.8	Mohave Rd	243	243.43	Riverview Dr	14,478	16,828	31,306		1	8	57	1,565	689	7.2	53,220
101176	SR 95	243.43	Riverview Dr	243.5	243.92	Marina Blvd	14,172	13,790	27,962		1	8	53	1,118	1,035	7.7	55,365
101178	SR 95	243.92	Marina Blvd	244	244.44	Hancock Rd	14,570	13,565	28,135		1	9	51	1,154	957	7.5	37,982
101180	SR 95	244.44	Hancock Rd	244.8	244.89	Ramar Rd	-	-	30,203		3	7	54	1,148	906	6.8	42,888
101182	SR 95	244.89	Ramar Rd	245	246.1	Silver Creek Rd / Georgie Ln	16,793	11,594	28,387		1	9	62	1,050	710	6.2	40,310
101184	SR 95	246.1	Silver Creek Rd / Georgie Ln	246.8	246.9	Pass Canyon Rd	-	-	37,000		2	9	53	1,480	740	6	55,130
101186	SR 95	246.9	Pass Canyon Rd	247	247.67	1st St	13,242	14,936	28,178		1	8	51	1,099	479	5.6	41,985
101188	SR 95	247.67	1st St	248.1	248.48	7th St	13,250	13,598	26,848		1	8	51	1,101	322	5.3	40,004
101190	SR 95	248.48	7th St	248.99	249.75	SR 68 / Locust Blvd	14,079	14,368	28,447		1	9	52	1,028	188	4.3	42,955
101192	SR 95	249.75	SR 68 / Locust Blvd	249.9	250	Nevada State Line / Colorado River	-	-	28,016		3	7	55	981	420	5	40,903
101195	SR 96	0	Dick Peak Rd	2	4.02	SR 97	782	875	1,657		1	8	66	66	15	4.9	2,568
101196	SR 96	4.02	SR 97	13.1	22.09	Date Creek / Thompson Valley Rd	215	215	430		1	13	60	95	11	24.7	808
101197	SR 97	155.27	US 93	161.25	166.97	SR 96	-	-	933		3	9	58	70	112	19.5	1,260
101198	SR 98	294.67	US 89 - Page	296	297.25	BIA Rte 20 / Coppermine Rd	1,598	1,334	2,932		1	9	57	247	187	14.8	4,691
101199	SR 98	297.25	BIA Rte 20 / Coppermine Rd	298	300.85	Navajo Generating Station Rd	4,509	4,507	9,016		1	9	66	316	261	6.4	14,876
101200	SR 98	300.85	Navajo Generating Station Rd	325	349.25	Navajo Mountain Rd	2,105	2,105	4,210		12	10	100	281	104	9.1	7,410
101201	SR 98	349.25	Navajo Mountain Rd	360	361.56	US 160	1,313	1,331	2,645		1	10	53	257	101	13.5	4,814
101202	SR 99	27.5	15 Miles south of Winslow	31	36.34	Territorial Rd	-	-	289		3	11	56	15	4	6.6	450
101203	SR 99	36.34	Territorial Rd	39	42.67	SR 87 - Winslow	271	281	552		1	12	51	16	1	3.1	861
101204	SR 99	52.56	I-40 (Exit 245)	54.5	72.22	BIA Rte 15 - Sunrise	369	372	748		1	12	50	73	28	13.5	905
101205	SR 101	1.21	Exit 1A, 18 I-10 / McDowell Rd	2.4	2.94	Exit 3 Thomas Rd	67,869	65,221	133,090		3	7	51	4,658	2,662	5.5	182,999
101206	SR 101		Exit 3 Thomas Rd	3.43		Exit 4 Indian School Rd	79,517	76,398	155,915		1	8	53	5,529	3,472	5.8	216,722
101207	SR 101	3.94	Exit 4 Indian School Rd	4.4	5	Exit 5 Camelback Rd	67,875	65,213	133,088		3	7	53	5,057	2,795	5.9	182,331
101208	SR 101	5	Exit 5 Camelback Rd	5.8	6	Exit 6 Bethany Home Rd	50,810	67,453	118,263		1	8	57	4,139	4,139	7	157,290
101209	SR 101	6	Exit 6 Bethany Home Rd	6.7	7	Exit 7 Glendale Ave	70,578	67,810	138,388		3	8	63	4,982	4,152	6.6	178,521
101210	SR 101	7	Exit 7 Glendale Ave	7.8	8.09	Exit 8 Northern Ave	65,719	65,543	131,262		1	8	55	4,594	3,806	6.4	169,328
101211	SR 101	8.09	Exit 8 Northern Ave	9	9.18	Exit 9 Olive Ave	58,776	56,685	115,461		1	9	55	4,388	2,771	6.2	147,213
101212	SR 101	9.18	Exit9 Olive Ave	9.8	10.3	Exit 10 Peoria Ave	66,815	73,916	140,731		3	8	52	4,926	2,674	5.4	174,506
101213	SR 101	10.3	Exit 10 Peoria Ave	10.75	11.22	Exit 11 US 60 (Grand Ave)	64,699	73,926	138,625		1	9	55	5,153	2,458	5.5	171,895
101214	SR 101	11.22	Exit 11 US 60 (Grand Ave)	11.7	12	Exit 12 Thunderbird Rd	55,314	55,314	110,628		12	9	56	3,872	1,881	5.2	139,944
101215	SR 101	12	Exit 11 US 60 (Grand Ave)	12.1	12.68	Exit 12 Thunderbird Rd	51,031	51,031	102,062		12	10	55	3,214	2,449	5.5	131,660
101216	SR 101	12.68	Exit 12 Thunderbird Rd	13.2	14.75	Exit 14 Bell Rd	61,548	60,352	121,900		1	9	53	4,267	3,536	6.4	160,908
101217	SR 101	14.75	Exit 14 Bell Rd	15.3	15.8	Exit 15 Union Hills Dr	45,136	46,047	91,183		3	9	57	4,833	2,280	7.8	112,611
101218	SR 101	15.8	Exit 15 Union Hills Rd	16.3	17.24	Exit 17 75th Ave	50,351	48,375	98,726		3	9	56	4,544	2,540	7.2	142,165
101219	SR 101	17.24	Exit 17 75th Ave	17.7	18.24	Exit 18 67th Ave	62,429	71,516	133,945		3	9	62	7,635	3,215	8.1	172,789
101220	SR 101	18.24	Exit 18 67th Ave	18.7	19.19	Exit 19 59th Ave	68,656	76,053	144,709		1	9	58	6,367	2,749	6.3	172,927
101221	SR 101	19.19	Exit 19 59th Ave	19.7	20.19	Exit 20 51st Ave	74,899	77,525	152,424		1	8	56	7,012	3,048	6.6	209,583
101222	SR 101	20.19	Exit 20 51st Ave	20.89	22.2	Exit 22 35th Ave	86,305	82,474	168,779		1	8	56	6,751	3,207	5.9	217,303
101223	SR 101	22.2	Exit 22 35th Ave	22.9	23.41	Exit 23 I-17	42,604	40,974	83,578		3	8	54	5,850	2,771	10.3	100,294
101224	SR 101	23.41	Exit 23 I-17	24.1	24.2	Exit 24 19th Ave	43,114	39,797	82,911		3	7	60	4,975	3,316	10	144,680
101225	SR 101	24.2	Exit 24 19th Ave	24.7	25.18	Exit 25 7th Ave	107,853	75,200	183,053		3	7	53	5,858	2,746	4.7	244,376
101226	SR 101	25.18	Exit 25 7th Ave	25.7	26.16	Exit 26 7th St	93,011	89,740	182,751		1	8	50	9,138	4,569	7.5	213,819
101227	SR 101	26.16	Exit 26 7th St	26.9	28.21	Exit 28 Cave Creek Rd	90,859	90,859	181,718		12	10	53	8,668	5,815	8	198,073
101229	SR 101	28.21	Exit 28 Cave Creek Rd	28.8	29.21	Exit 29 32nd St	89,395	94,760	184,155		3	8	52	6,077	4,420	5.7	216,382
101230	SR 101	29.21	Exit 29 32nd St	29.6	30.1	Exit 30 SR 51	59,792	64,628	124,420		1	9	59	4,356	1,866	5	154,281
101231	SR 101	30.1	Exit 30 SR 51	30.69	31.3	Exit 31 Tatum Blvd	91,561	92,021	183,582		1	8	53	7,519	2,202	5.3	231,194
101232	SR 101	31.3	Exit 31 Tatum Blvd	31.8	32.39	Exit 32 56th St	83,201	82,153	165,354		1	8	59	5,590	3,968	5.8	210,826

Loc ID	Route	BMP	Start	TCS MP	EMP	End	Pos Dir AADT	Neg Dir AADT	AADT 2018	AADT Derivation	K Factor %	D Factor %	AADT Single Trucks	AADT Combo Trucks	T Factor %	2040 Future AADT	
101233	SR 101L	32.39	56th St	33.56	34.51	Scottsdale Rd	81,552	79,421	160,973		1	8	55	5,634	3,333	5.6	192,363
101234	SR 101	34.51	Exit 34 Scottsdale Rd	35	35.55	Exit 35 Hayden Rd	77,735	75,262	152,997		1	8	60	5,814	3,213	5.9	197,366
101235	SR 101	35.55	Exit 35 Hayden Rd	36.1	36.59	Exit 36 Princess Dr - Pima Rd	75,755	73,105	148,860		1	9	54	5,211	2,977	5.5	170,445
101236	SR 101	36.59	Exit 36 Princess Dr - Pima Rd	37.2	37.8	Exit 37 Frank Lloyd Wright Blvd	71,768	68,953	140,721		3	8	54	6,895	2,955	7	150,923
101237	SR 101	37.8	Exit 37 Frank Lloyd Wright Blvd	38.4	38.59	Exit 39 Raintree Dr	68,139	75,942	144,081		1	9	51	6,788	3,458	7.1	154,167
101238	SR 101	38.59	Exit 39 Raintree Dr	39.6	40.08	Exit 40 Cactus Rd	75,588	89,124	164,712		1	9	53	6,424	3,459	6	168,418
101239	SR 101	40.08	Exit 40 Cactus Rd	40.5	41.06	Exit 41 Shea Blvd	97,042	94,403	191,445		1	8	50	6,701	4,020	5.6	200,060
101240	SR 101	41.06	Exit 41 Shea Blvd	41.6	42.35	Exit 42 Pima Rd - 90th St	80,332	76,130	156,462		1	9	52	5,789	3,286	5.8	169,761
101241	SR 101	42.35	Exit 42 Pima Rd - 90th St	43	43.38	Exit 43 Via de Ventura	88,764	84,120	172,884		3	9	51	5,359	2,593	4.6	201,410
101242	SR 101	43.38	Exit 43 Via De Ventura	44	44.46	Exit 44 Indian Bend Rd	86,575	87,039	173,614		1	9	51	6,076	2,778	5.1	199,656
101243	SR 101	44.46	Exit 44 Indian Bend Rd	45	45.51	Exit 45 McDonald Dr	89,495	88,627	178,122		1	9	54	7,125	3,741	6.1	206,622
101244	SR 101	45.51	Exit 45 McDonald Dr	46	46.51	Exit 46 Chaparral Rd	90,436	91,146	181,582		1	9	51	6,355	5,811	6.7	236,965
101245	SR 101	46.51	Exit 46 Chaparral Rd	47	47.51	Exit 47 Indian School Rd	88,500	89,500	178,000		2	9	56	6,586	5,874	7	222,500
101246	SR 101	47.51	Exit 47 Indian School Rd	48	48.53	Exit 48 Thomas Rd	92,585	91,138	183,723		1	9	53	6,247	5,695	6.5	197,502
101247	SR 101	48.53	Exit 48 Thomas Rd	49	49.51	Exit 49 McDowell Rd	94,813	92,405	187,218		1	9	54	6,553	5,617	6.5	204,068
101248	SR 101	49.51	Exit 49 McDowell Rd	49.98	50.54	Exit 50 McKellips Rd	96,304	92,505	188,809		3	8	56	6,608	5,475	6.4	228,459
101249	SR 101	50.54	Exit 50 McKellips Rd	51	51.24	Exit 51 SR 202 (Exit 10)	82,873	108,878	191,751		1	8	56	5,753	4,602	5.4	211,885
101250	SR 101	51.24	Exit 51 SR 202 (Exit 10)	51.7	52.06	Rio Salado Pkwy / 8th St	52,946	57,231	110,177		3	6	53	3,120	4,517	6.9	120,919
101251	SR 101	52.06	Rio Salado Pkwy / 8th St	52.1	53.07	Apache Blvd / Main St	60,318	62,901	123,219		3	6	52	3,450	4,189	6.2	134,309
101252	SR 101	53.07	Apache Blvd / Main St	53.3	53.5	Exit 53 Broadway Rd	124,305	124,305	248,610		12	7	52	5,718	2,486	3.3	287,145
101253	SR 101	53.5	Exit 53 Broadway Rd	54	54.62	Exit 54 Southern Ave / Baseline Rd	115,135	115,135	230,270		12	8	52	7,254	2,763	4.4	277,475
101254	SR 101	54.62	Exit 54 Southern Ave / Baseline Rd	54.9	56.59	Exit 56 Guadalupe Rd / Baseline Rd	60,680	63,312	123,992		1	8	52	4,092	2,344	5.2	148,170
101255	SR 101	56.58	Exit 56 Guadalupe Rd / Baseline Rd	57	57.57	Exit 57 Elliot Rd	99,730	101,095	200,825		1	8	51	6,828	3,816	5.3	232,957
101256	SR 101	57.57	Exit 57 Elliot Rd	58	58.6	Exit 58 Warner Rd	94,296	98,052	192,348		1	8	53	6,732	5,577	6.4	215,430
101257	SR 101	58.6	Exit 58 Warner Rd	59	59.61	Exit 59 Ray Rd	87,678	90,781	178,459		1	8	52	6,246	3,212	5.3	254,304
101258	SR 101	59.61	Exit 59 Ray Rd	60	60.6	Exit 60 Chandler Blvd	76,742	80,692	157,434		1	8	53	5,510	4,565	6.4	196,005
101259	SR 101	60.6	Exit 60 Chandler Blvd	60.7	61.1	Exit 61A Frye Rd	45,017	44,676	89,693		3	6	60	4,528	2,960	8.3	124,673
101260	SR 101	61.1	Exit 61A Frye Rd	61.1	61.95	Exit 61B SR 202	43,344	42,764	86,108		1	8	60	3,185	2,639	6.8	135,620
101317	SR 143	0	Broadway Rd	0.6	0.77	Exit 2 University Dr	41,300	39,700	81,000		2	9	54	3,645	6,156	12.1	86,265
101318	SR 143	0.77	Exit 2 University Dr	0.8	1.71	Exit 3B Sky Harbor Blvd	51,608	48,560	100,168		1	9	58	3,506	5,910	9.4	113,691
101319	SR 143	1.71	Exit 3B Sky Harbor Blvd	2.09	2.57	Exit 4 Washington St	32,059	14,830	46,889		3	9	70	1,876	2,344	9	50,640
101320	SR 143	2.57	Exit 4 Washington St	2.6	3.26	Exit 5 SR 202 (Exit 3)	12,967	12,967	25,934		12	11	64	1,167	1,037	8.5	27,296
101321	SR 143	3.26	Exit 5 SR 202 (Exit 3)	3.4	3.81	McDowell Rd	13,033	11,708	24,741		1	10	61	866	1,237	8.5	25,360
101327	SR 169	0	SR 69 - Dewey	0.99	2.38	Crystal Rock Rd	3,776	4,171	7,947		1	9	52	278	231	6.4	9,775
101328	SR 169	2.38	Crystal Rock Rd	3.5	4.91	Orme Rd	3,348	3,354	6,702		1	9	55	444	242	10.2	8,579
101329	SR 169	4.91	Orme Rd	9.8	15.16	I-17 (Exit 278)	2,916	2,928	5,844		1	10	52	389	234	10.7	12,156
101330	SR 177	136.31	SR 77 - Winkleman	137	137.72	Velasco Ave	1,608	1,743	3,351		1	13	69	219	112	9.9	6,635
101331	SR 177	137.72	Velasco Ave	138.44	139.59	Copper Basin Railroad yard access Rd	1,118	1,091	2,209		1	13	51	146	71	9.8	2,452
101332	SR 177	139.59	Copper Basin Railroad yard access Rd	143	146.19	Tilbury Dr	991	1,112	2,103		1	7	54	346	105	21.4	4,164
101333	SR 177	146.19	Tilbury Dr	149.22	152.18	Florence - Kelvin Hwy	983	1,074	2,057		1	11	56	199	93	14.2	6,171
101334	SR 177	152.18	Florence - Kelvin Highway	156	167.11	Ray St	-	-	2,067		3	11	58	200	93	14.2	6,201
101335	SR 177	167.11	Ray St	167.3	167.72	Heiner Dr	1,357	1,280	2,637		1	11	60	256	119	14.2	6,935
101336	SR 179	298.87	I-17 (Exit 298)	301	303.02	Beaver Flat Rd	3,389	3,112	6,501		1	9	56	341	94	6.7	9,491
101337	SR 179	303.02	Beaver Flat Rd	305.2	305.66	Rojo Dr	4,755	4,509	9,264		1	9	56	423	92	5.6	13,248
101338	SR 179	305.66	Rojo Dr	306	306.23	Verde Valley School Rd / Jack Canyon Rd	6,147	6,211	12,358		1	8	51	432	148	4.7	17,672
101339	SR 179	306.23	Verde Valley School Rd / Jack Canyon Rd	306.31	306.55	Cortes Dr	6,486	6,488	12,974		1	9	54	389	208	4.6	19,461
101340	SR 179	306.55	Cortes Dr	306.7	306.95	Bell Rock Blvd	6,435	6,352	12,787		1	9	54	396	256	5.1	20,076

Loc ID	Route	BMP	Start	TCS MP	EMP	End	Pos Dir AADT	Neg Dir AADT	AADT 2018	AADT Derivation	K Factor %	D Factor %	AADT Single Trucks	AADT Combo Trucks	T Factor %	2040 Future AADT
101341	SR 179	306.95	Bell Rock Blvd	307.3	310.09	Indian Cliffs Rd	-	-	12,989	3	9	58	520	195	5.5	20,588
101342	SR 179	310.09	Indian Cliffs Rd	310.31	310.55	Chapel Rd	6,603	6,736	13,339	1	10	58	524	63	4.4	21,209
101343	SR 179	310.55	Chapel Rd	311.5	312.1	Morgan Rd	6,323	6,310	12,633	1	9	57	654	104	6	16,170
101344	SR 179	312.1	Morgain	313	313.09	Schnebly Hill Rd	-	-	13,214	3	13	63	463	92	4.2	21,010
101345	SR 179	313.09	Schnebly Hill Rd	313.4	313.44	SR 89A - Sedona	7,111	7,010	14,121	1	8	51	410	85	3.5	22,452
101347	SR 181	38.25	US 191 - Sunizona	39	40.25	Dos Cabezas Rd	464	482	946	1	8	57	124	67	20.2	1,353
101348	SR 181	40.25	Dos Cabezas Rd	41	44.32	Feather Pine Rd	-	-	676	3	11	59	128	29	23.2	798
101349	SR 181	44.32	Feather Pine Rd	51	61.03	SR 186	98	151	249	1	11	54	48	9	22.9	284
101350	SR 181	61.03	SR 186	63	65.02	Chiricahua National Monument entrance	-	-	243	3	14	57	24	10	14	330
101351	SR 186	326.19	Grant Rd / Virginia Ave	327	327.49	SB 10 (4) / Haskell Ave	2,153	2,359	4,512	1	12	50	212	190	8.9	5,775
101353	SR 186	328.2	SB 10 (4) / Haskell Ave	331	334.23	Kansas Settlement Rd	-	-	1,722	3	7	59	95	102	11.4	1,791
101354	SR 186	334.23	Kansas Settlement Rd	338	340	Rocky Rd	167	167	334	12	12	56	62	35	29	494
101355	SR 186	340	Rocky Rd	348	359.42	SR 181	-	-	230	2	15	56	23	10	14.3	340
101356	SR 187	186.77	SR 387 (East of I-10)	189.2	192.19	SR 87	1,369	1,580	2,949	1	9	52	318	700	34.5	5,131
101357	SR 188	214.92	US 60 - Claypool	216.1	216.82	Bixby Rd	1,744	1,639	3,383	1	9	52	440	142	17.2	6,732
101359	SR 188	216.82	Bixby Rd	219	220.18	Gerald Wash Rd	1,084	1,075	2,159	1	10	52	389	97	22.5	4,296
101360	SR 188	220.18	Gerald Wash Rd	222	222.66	Hicks Wash Rd / Horseshoe Bend Wash Rd	653	606	1,259	1	10	61	305	107	32.7	2,505
101361	SR 188	222.66	Hicks Wash Rd / Horseshoe Bend Wash Rd	229	229.59	SR 288	632	441	1,073	1	9	61	218	79	27.7	2,200
101362	SR 188	229.59	SR 288	230	235.51	School House Point Rd	567	500	1,067	1	10	54	174	77	23.5	2,774
101363	SR 188	235.51	School House Point Rd	236	244.15	SR 88 (Roosevelt Dam)	456	411	867	1	10	52	187	84	31.3	2,254
101364	SR 188	244.15	SR 88 - Roosevelt Dam	250	260.3	Riverside Acres access Rd (retired) / Dryer Rd	447	447	894	12	12	65	179	41	24.6	1,609
101365	SR 188	260.3	Riverside Acres access Rd / Dryer Rd	263	276.69	SR 87	887	912	1,799	1	9	58	272	106	21	2,033
101366	SR 189	0	International Border and POE - Nogales	0.8	1.1	Target Range / Arbo National Pit Rd	4,948	4,948	9,896	12	10	54	990	1,237	22.5	14,349
101368	SR 189	1.1	Target Range / Arbo National Pit Rd	1.3	1.88	Industrial Park Dr (South)	5,786	6,939	12,725	7	9	53	1,040	1,273	18.2	22,905
101370	SR 189	1.88	Industrial Park Dr (South)	2.15	2.64	Frank Reed Rd	6,882	6,595	13,477	7	8	54	1,161	1,213	17.6	24,259
101372	SR 189	2.64	Frank Reed Rd	2.75	2.95	I-19 (Exit 4) / Mariposa Rd	9,437	9,350	18,787	7	9	52	807	1,879	14.3	24,047
101374	SR 189	2.95	I-19 (Exit 4) / Mariposa Rd	3.11	3.75	SB 19 - Nogales	11,184	10,351	21,535	1	10	50	529	920	6.7	28,642
101376	SR 195	5.98	Avenue E	7.5	9.09	Avenue B	6,996	8,279	15,275	1	7	66	1,066	210	8.4	19,858
102288	SR 195	9.09	Avenue B	9.82	23.95	County 14th St	-	-	12,336	1	3	85	355	384	6	17,024
101377	SR 195	23.95	County 12th St / 40th St	25.9	26.94	SR 88 (1) / 32nd St	3,379	3,005	6,379	3	10	80	305	254	8.8	7,782
101379	SR 195	26.94	SR 88 (1) / 32nd St	24	27.61	MP 24.45 (north of I-8 (Exit 7))	9,280	9,191	18,471	1	8	51	423	314	4	36,757
101381	SR 202	0	Exit 1A I-10 / SR 51	0.6	0.74	Exit 1B 24th St	63,643	63,643	127,286	12	7	52	4,010	7,701	9.2	138,742
101382	SR 202	0.74	Exit 1B 24th St	1.1	1.75	Exit 1C 32nd St	112,536	99,197	211,733	1	7	54	7,410	6,564	6.6	256,197
101383	SR 202	1.75	Exit 1C 32nd St	2.1	2.7	Exit 2 40th St / 44th St	101,499	100,975	202,474	1	8	57	7,086	7,694	7.3	229,808
101384	SR 202	2.7	Exit 2 40th St / 44th St	2.7	3.5	Exit 3 SR 143 / McDowell Rd	70,904	70,904	141,808	12	8	56	4,467	6,381	7.7	150,316
101385	SR 202	3.5	Exit 3 SR 143 / McDowell Rd	3.6	4.5	Exit 4 52nd St / Van Buren St	78,171	79,477	157,648	1	8	55	6,148	5,360	7.3	189,178
101386	SR 202	4.5	Exit 4 52nd St / Van Buren St	4.89	5.7	Exit 6 Priest Dr / Center Pkwy	80,074	77,156	157,230	1	8	58	5,503	5,189	6.8	198,896
101387	SR 202	5.7	Exit 6 Priest Dr / Center Pkwy	5.9	6.4	Exit 7 Rural Rd / Scottsdale Rd	100,904	100,904	201,808	12	9	56	4,238	5,449	4.8	225,016
101388	SR 202	6.4	Exit 6 Priest Dr / Center Pkwy	6.8	7.8	Exit 7 Rural Rd / Scottsdale Rd	90,813	90,262	181,075	1	8	55	7,243	6,157	7.4	204,615
101389	SR 202	7.8	Exit 7 Rural Rd / Scottsdale Rd	8.17	8.8	Exit 8 McClintock Dr / Hayden Rd	97,859	97,200	195,059	3	9	72	7,802	6,632	7.4	238,947
101390	SR 202	8.8	Exit 8 McClintock Dr / Hayden Rd	8.9	9.8	Exit 10 SL 101 (Exit 51)	82,842	87,767	170,609	1	7	51	5,289	11,260	9.7	198,759
101391	SR 202	9.8	Exit 10 SL 101 (Exit 51)	10.4	11.07	Exit 10 Dobson Rd	87,705	83,883	171,588	3	9	55	3,962	3,283	4.2	211,053
101392	SR 202	11.07	Exit 10 Dobson Rd	11.5	12.04	Exit 11 Alma School Rd	57,482	54,601	112,083	1	9	71	3,912	5,380	8.3	155,795
101393	SR 202	12.04	Exit 11 Alma School Rd	12.3	12.73	Exit 12 McKellips Rd	47,206	45,359	92,565	3	10	75	3,864	5,461	10.1	116,169
101394	SR 202	12.73	Exit 12 McKellips Rd	12.8	13.23	Exit 13 SR 87 / Country Club Dr	37,248	35,793	73,041	3	8	57	3,287	2,556	8	104,814
101395	SR 202	13.23	Exit 13 SR 87 / Country Club Dr	14.2	16.56	Exit 16 Gilbert Rd	55,570	57,606	113,176	3	8	79	5,659	2,490	7.2	182,779
101396	SR 202	16.56	Exit 16 Gilbert Rd	16.7	16.9	Exit 17 McDowell Rd	42,088	41,633	83,721	7	10	79	3,044	2,522	6.6	94,186

Loc ID	Route	BMP	Start	TCS MP	EMP	End	Pos Dir AADT	Neg Dir AADT	AAADT 2018	AAADT Derivation	K Factor %	D Factor %	AAADT Single Trucks	AAADT Combo Trucks	T Factor %	2040 Future AADT
101397	SR 202	16.9	Exit 17 McDowell Rd	18.1	19.02	Exit 19 Val Vista Dr	45,157	40,121	85,278	7	14	79	2,147	1,778	4.6	97,643
101398	SR 202	19.02	Exit 19 Val Vista Dr	19.5	20.11	Exit 20 Greenfield Rd	42,031	37,099	79,130	7	11	80	2,374	3,165	7	118,299
101399	SR 202	20.11	Exit 20 Greenfield Rd	20.5	21.11	Exit 21 Higley Rd	41,139	32,318	73,457	1	11	79	2,938	2,571	7.5	107,982
101400	SR 202	21.11	Exit 21 Higley Rd	21.6	22.2	Exit 22 Recker Rd	36,858	33,202	70,060	1	12	75	2,802	2,452	7.5	96,333
101401	SR 202	22.2	Exit 22 Recker Rd	22.6	22.7	Exit 23A Power Rd	36,910	35,588	72,498	1	12	69	1,812	3,987	8	128,684
101425	SR 202	22.7	N Power Rd	24.4	24.8	Mckellips Rd	37,598	38,991	76,589	1	11	69	2,298	4,212	8.5	123,308
101426	SR 202		Mckellips Rd			Brown Road	35,752	37,211	72,963	3	12	69	2,554	2,189	6.5	102,878
101427	SR 202		Brown Road			University Drive	36,255	36,477	72,732	3	12	69	2,109	2,255	6	119,644
101402	SR 202	27.88	Exit 27 University Dr	28.6	28.96	Exit 29 Broadway Rd	35,009	36,949	71,958	1	11	67	2,159	2,159	6	101,821
101403	SR 202	28.96	Exit 29 Broadway Rd	29.2	30.6	Exit 30A/B US 60	33,331	39,209	72,540	1	10	68	2,176	2,249	6.1	80,519
101404	SR 202	30.6	Exit 30A/B US 60	30.8	31.1	Exit 31 Baseline Rd	12,729	13,485	26,214	1	10	51	1,337	1,049	9.1	35,258
101405	SR 202	31.1	Exit 31 Baseline Rd	31.4	32.13	Exit 32 Guadalupe Rd	44,645	44,645	89,290	12	9	53	3,036	2,679	6.4	126,345
101406	SR 202	32.13	Exit 32 Guadalupe Rd	32.3	33.1	Exit 33 Elliot Rd	44,423	44,423	88,846	12	9	54	3,287	2,488	6.5	121,275
101407	SR 202	33.1	Exit 33 Elliot Rd	33.77	34.7	Exit 34A & 34B SR 24 / Hawes Rd	39,486	39,486	78,972	12	9	59	3,001	2,527	7	103,058
101408	SR 202	34.7	Exit 34A & 34B SR 24 / Hawes Rd	35.88	36.6	Exit 36 Power Rd	28,837	32,500	61,337	3	10	54	2,147	2,147	7	92,006
101409	SR 202	36.6	Exit 36 Power Rd	37.4	38.67	Exit 38 Higley Rd	27,770	28,695	56,464	1	9	54	2,823	2,259	9	79,897
101410	SR 202	38.67	Exit 38 Higley Rd	39.87	40.75	Exit 40 Williams Field Rd	28,029	28,893	56,922	1	9	53	2,846	2,277	9	83,391
101411	SR 202	40.75	Exit 40 Williams Field Rd	41.05	41.45	Exit 41 Santan Village PKWY	28,555	29,323	57,878	1	9	52	2,315	1,736	7	83,055
101412	SR 202	41.45	Exit 41 Santan Village PKWY	42.1	42.5	Exit 42 Val Vista Dr	46,074	46,888	92,962	1	8	54	3,254	1,859	5.5	114,343
101413	SR 202	42.5	Exit 42 Val Vista Dr	43.05	44.55	Exit 44 Gilbert Rd	62,935	64,176	127,111	1	8	55	4,068	2,161	4.9	162,067
101414	SR 202	44.55	Exit 44 Gilbert Rd	45.06	45.55	Exit 45 Cooper Rd	67,301	68,293	135,594	1	8	56	3,932	1,898	4.3	182,374
101415	SR 202	45.55	Exit 45 Cooper Rd	46.1	46.6	Exit 46 McQueen Rd	73,934	73,878	147,812	1	8	53	4,287	2,956	4.9	195,851
101416	SR 202	46.6	Exit 46 McQueen Rd	47.1	47.7	Exit 47 Arizona Ave	76,503	73,149	149,652	1	8	58	4,939	2,394	4.9	173,596
101417	SR 202	47.7	Exit 47 Arizona Ave	48.2	48.63	Exit 48 Alma School Rd	84,822	77,327	162,149	1	8	59	4,702	2,432	4.4	186,471
101418	SR 202	48.63	Exit 48 Alma School Rd	48.9	49.65	Exit 49 Dobson Rd	84,585	77,946	162,531	7	8	60	3,576	3,413	4.3	195,037
101419	SR 202	49.65	Exit 49 Dobson Rd	49.8	50.1	Exit 50A SR 101	87,076	78,758	165,834	1	8	60	3,648	3,814	4.5	239,630
101420	SR 202	50.1	Exit 50A SR 101	50.45	50.4	Exit 50B Price Rd	39,942	40,314	80,256	1	8	57	3,371	2,087	6.8	126,002
101421	SR 202	50.4	Exit 50B Price Rd	50.9	51.3	Exit 51 Chandler Village Dr / McClintock Rd	39,985	40,408	80,393	7	8	56	3,377	2,010	6.7	104,511
101422	SR 202	51.3	Exit 51 Chandler Village Dr / McClintock Rd	52.81	53.75	Exit 52 Kyrene Rd	40,000	40,400	80,400	2	13	53	1,950	1,795	4.7	105,726
101423	SR 202	53.75	Exit 52 Kyrene Rd	54.3	55.3	Exit 53 I-10	39,979	40,477	80,456	1	8	56	1,850	2,816	5.8	92,927
101424	SR 202	55.3	Exit 53 I-10	56.2	57.24	End of ADOT Ownership/Control	18,802	19,000	37,802	3	10	60	963	1,011	5.2	44,606
101469	SR 210	1	Broadway Blvd	1.1	2.36	Kino Pkwy	11,661	11,275	22,936	1	10	68	849	780	7.1	36,239
101470	SR 210	2.36	Kino Pkwy	2.6	2.88	22nd St	14,405	14,109	28,514	7	9	59	927	770	6	38,209
101471	SR 210	2.88	22nd St	3.4	3.95	Country Club Rd	9,893	9,893	19,786	12	10	65	791	693	7.5	29,283
101472	SR 210	3.95	Country Club Dr	4.2	4.46	34th St	13,195	13,195	26,390	12	11	57	897	737	6.2	40,113
101473	SR 210	4.46	34th St	4.6	4.73	MP 4.73	13,034	12,137	25,171	1	9	55	881	731	6.4	36,246
101479	SR 238	24	Maricopa Rd (7 miles west of Mobile)	31.3	38.01	Hidden Valley Rd	1,477	1,472	2,949	1	9	76	134	203	11.4	5,869
101480	SR 238	38.01	Hidden Valley Rd	39	39.94	Ralston Rd	2,263	2,325	4,588	1	8	67	324	679	21.9	9,130
101481	SR 238	39.94	Ralston Rd	42	43	MP 43	3,177	3,182	6,359	1	10	58	378	709	17.1	13,354
101482	SR 238	43	MP 43	44	44.25	SR 347 / Smith Enke Rd	-	-	5,008	1	8	50	453	748	24	7,662
102317	SR 260	206.4	SR 89A - Cottonwood	206.78	206.91	Rodeo Dr	-	-	33,369	3	9	58	1,001	901	5.7	47,718
101483	SR 260	206.98	Rodeo Dr	207.45	207.8	Godard Rd	12,576	12,437	25,013	1	9	59	1,058	412	5.9	35,518
101485	SR 260	207.8	Godard Rd	208.6	209.06	Praire Ln	9,865	10,439	20,304	7	9	57	792	629	7	30,253
101487	SR 260	209.06	Praire Ln	213	215.96	Cherry Rd	5,365	5,637	11,002	1	8	51	462	457	8.4	16,393
101488	SR 260	215.96	Cherry Rd	216.06	218.69	I-17 (Exit 287)	6,110	6,803	12,913	1	8	62	542	646	9.2	19,240
101489	SR 260	218.69	I-17 (Exit 287)	218.9	219.32	Finnie Flat	4,387	5,507	9,894	1	8	50	396	495	9	13,753
101490	SR 260	219.32	Finnie Flat	219.6	219.9	General Crook Trail (to I-17)	2,859	2,885	5,744	1	8	56	345	172	9	8,003

Loc ID	Route	BMP	Start	TCS MP	EMP	End	Pos Dir AADT	Neg Dir AADT	AADT 2018	AADT Derivation	K Factor %	D Factor %	AADT Single Trucks	AADT Combo Trucks	T Factor %	2040 Future AADT	
101491	SR 260	219.9	General Crook Trail (to I-17)	220.6	221.15	Main St	3,558	2,766	6,324		1	9	62	759	316	17	10,182
101493	SR 260	221.15	Main St	221.3	221.8	Quarter Horse Ln/ McCracken	4,397	4,593	8,990		1	9	53	902	270	13	14,474
101495	SR 260	221.8	Quarter Horse Ln/ McCracken	223.7	224.06	Sierra Verde Rd	2,876	2,835	5,711		1	8	53	343	177	9.1	9,195
101496	SR 260	224.06	Sierra Verde Rd	225	225.52	Verde Lakes Dr	2,340	2,472	4,812		1	8	60	433	154	12.2	6,448
101497	SR 260	225.52	Verde Lakes Dr	225.8	226.15	Aspen Way	1,288	1,286	2,574		1	9	57	312	94	15.8	4,144
101498	SR 260	226.15	Aspen Way	227	227.78	Lazar Rd	-	-	2,464		3	10	55	172	52	9.1	3,967
101499	SR 260	227.78	Lazar Rd	241	251.94	SR 87	555	548	1,103		1	10	54	107	40	13.3	3,188
101500	SR 260	251.95	SR 87 - Payson	252	252.29	Granite Dells Rd	11,525	11,569	23,094		1	9	51	1,155	924	9	27,597
101501	SR 260	252.29	Granite Dells Rd	252.4	252.88	Payson Ranger Station Rd	10,107	9,350	19,457		1	9	52	1,167	584	9	23,543
101503	SR 260	252.88	Payson Ranger Station Rd	254.5	255.86	Star Valley Landfill Rd	8,729	8,386	17,115		1	9	62	599	496	6.4	20,709
101505	SR 260	255.86	Star Valley Landfill Rd	258	258.58	Lion Springs Rd	4,887	4,512	9,399		3	10	64	508	639	12.2	11,185
101506	SR 260	258.58	Lion Springs Rd	259.75	263.19	MP 263.19	4,803	4,388	9,191		1	9	52	506	616	12.2	11,581
101507	SR 260	263.19	MP 263.19	265.3	266.87	Control Rd	4,922	4,871	9,793		1	9	52	656	686	13.7	12,339
101508	SR 260	266.87	Control Rd	279	282.24	Rim Rd / Woods Canyon Lake Rd	3,450	3,587	7,037		7	10	51	521	443	13.7	9,711
101510	SR 260	282.24	Rim Rd / Woods Canyon Lake Rd	286	290	MP 290	3,028	3,112	6,140		1	9	51	313	516	13.5	8,473
101511	SR 260	290	MP 290	294.22	303.72	MP 303.72	3,574	3,702	7,276		1	9	52	538	444	13.5	10,041
101512	SR 260	303.72	MP 303.72	305	305.75	SR 277 North - Heber	4,975	4,899	9,874		1	10	51	652	395	10.6	13,626
101514	SR 260	305.75	SR 277 - Heber	306	307.98	Mogollon Dr - Overgaard	3,738	3,414	7,152		1	12	58	536	322	12	10,728
101516	SR 260	307.98	Mogollon Dr - Overgaard	308.99	309.49	FH 144	2,630	2,087	4,717		1	11	63	458	241	14.8	8,349
101518	SR 260	309.49	FH 144	318	322.09	Sawmill Rd	2,531	1,997	4,528		1	11	64	444	226	14.8	8,015
102312	SR 260	322.09	Sawmill Rd	324	327.11	Pinedale Rd	2,475	1,984	4,459		1	11	63	441	218	14.8	5,886
101519	SR 260	327.11	Pinedale Rd	331	332.94	Burton Rd - Linden	2,487	2,318	4,805		1	15	61	466	233	14.5	5,958
101520	SR 260	332.94	Burton Rd - Linden	334.25	337.17	MP 337.16	3,221	3,221	6,442		12	9	60	225	187	6.4	6,829
101521	SR 260	337.17	MP 337.16	339	340.07	US 60 - Show Low	6,718	6,718	13,436		12	11	56	336	551	6.6	15,317
101522	SR 260	341.68	US 60 - Show Low	342.02	342.6	Meadow View Dr	10,309	7,941	18,250		1	9	57	310	785	6	23,908
101524	SR 260	342.6	Meadow View Dr	344.2	345.73	Show Low Lake Rd	-	-	29,256		3	9	52	439	527	3.3	38,325
101526	SR 260	345.73	Show Low Lake Rd	348	350.67	Woodland Rd	10,092	10,005	20,097		1	9	50	265	200	2.3	25,925
101528	SR 260	350.67	Woodland Rd	352.38	353.54	Penrod Ln	-	-	20,084		7	9	51	261	402	3.3	25,507
101530	SR 260	353.54	Penrod Ln	357.04	357.62	SR 73 South - Hon Dah	4,414	4,372	8,786		1	9	52	351	317	7.6	11,334
101531	SR 260	357.62	SR 73 - Hon Dah	360	360.72	Cady Ave / Mcguffey Ave	1,641	1,777	3,418		1	10	52	103	85	5.5	4,683
101532	SR 260	360.79	Cady Ave / Mcguffey Ave	368	368.6	SR 473	1,099	972	2,071		1	11	54	124	41	8	2,858
101533	SR 260	368.6	SR 473	372.5	377.45	SR 273	725	716	1,441		1	23	63	139	28	11.6	1,989
101534	SR 260	377.45	SR 273	383.71	385.57	SR 373	603	546	1,149		1	11	60	103	41	12.6	1,494
101535	SR 260	385.57	SR 373	391	393.01	SR 261	698	681	1,379		1	11	53	97	28	9	1,710
101536	SR 260	393.01	SR 261	393.99	395.38	River Rd - Eagar	813	797	1,610		1	17	60	120	25	9	1,948
101537	SR 260	395.38	River Rd - Eagar	396.95	396.18	Main St - Eagar	1,469	1,446	2,915		1	10	52	102	58	5.5	4,139
101538	SR 260	396.18	Main St - Eagar	397	398.52	US 180	1,456	1,426	2,882		1	10	53	101	58	5.5	4,092
101543	SR 261	394.37	SR 273	403	411	MP 411	89	98	187		1	16	70	6	3	4.5	254
101544	SR 261	411	MP 411	412.5	412.5	SR 260	204	212	416		7	12	63	12	6	4.5	495
101545	SR 264	321.97	US 160 - Tuba City	322.5	323.79	MP 323.79	1,206	1,137	2,343		1	7	55	117	37	6.6	3,046
101546	SR 264	323.79	MP 323.79	347	367.09	BIA Rte 500 (2) Road to Hotevilla School	299	396	695		1	9	52	25	17	6	834
101547	SR 264	367.09	BIA Rte 500 (2) Road to Hotevilla School	370	372.98	BIA Rte 22 (To New Oraibi)	-	-	1,486		1	11	55	119	74	13	1,783
101548	SR 264	372.98	BIA Rte 22 (To New Oraibi)	378	384.23	SR 87 - Second Mesa	-	-	2,575		1	11	56	155	77	9	3,219
101549	SR 264	384.23	SR 87 - Second Mesa	388	391.92	BIA Rte 508 - Polacca	1,393	1,203	2,596		1	11	64	156	78	9	3,738
101550	SR 264	391.92	BIA Rte 508 - Polacca	394	395.96	BIA Rte 60	1,020	767	1,787		1	11	67	177	71	13.9	2,573
101551	SR 264	395.96	BIA Rte 60	397	411.18	BIA Rte 6	833	701	1,534		1	11	53	144	69	13.9	2,010
101552	SR 264	411.18	BIA Rte 6	438.06	441.02	US 191 North / BIA Rte 15 South - West of Ganado	969	961	1,930		1	10	79	189	71	13.5	2,374

Loc ID	Route	BMP	Start	TCS MP	EMP	End	Pos Dir AADT	Neg Dir AADT	AADT 2018	AADT Derivation	K Factor %	D Factor %	AADT Single Trucks	AADT Combo Trucks	T Factor %	2040 Future AADT
101553	SR 264	441.02	US 191 North / BIA Rte 15 South - West of Ganado	445	446.18	Rd to Ganado (Hubble) Trading Post	-	-	5,918	3	10	65	457	89	9.2	8,995
101554	SR 264	446.18	Rd to Ganado (Hubble) Trading Post	446.73	446.91	US 191 South - Ganado	3,478	3,520	6,998	1	10	61	382	82	6.6	10,637
101555	SR 264	446.91	US 191 South - Ganado	447.46	448.37	BIA Rte 27	-	-	5,918	3	11	77	469	98	9.6	7,575
101556	SR 264	448.37	BIA Rte 27	462	475.5	BIA Rte 12 (North) / Window Rock Jct	2,956	2,934	5,890	1	10	58	486	123	10.3	7,009
101557	SR 264	475.5	BIA Rte 12 (North) / Window Rock Jct	476.1	476.12	New Mexico State Line	7,834	7,878	15,712	1	11	59	2,092	246	14.9	21,840
101559	SR 266	104.6	US 191	114	123.78	SS 266 (Fort Grant Rd) - Bonita	114	99	213	1	9	55	35	9	20.7	337
101560	SR 273	377.46	SR 260	379	385.36	FS 87 (Road to Greer)	312	352	664	1	12	54	33	7	6	883
102311	SR 273	385.36	FS 87 (Road to Greer)	392	394.32	SR 261	200	212	412	1	13	53	29	9	9.2	548
101561	SR 273	394.32	SR 261	395.5	396.84	FS 115 (SE of Big Lake Rd)	302	291	593	7	13	53	32	12	7.4	937
101562	SR 277	305.67	SR 260 - Heber	306.06	312.62	SR 377	-	-	2,974	3	10	52	178	178	12	7,732
101563	SR 277	312.62	SR 377	317.2	321.21	SS 277 (Paper Mill Rd)	590	590	1,180	12	9	52	115	118	19.7	2,218
101564	SR 277	321.21	SR 277S (Paper Mill Rd)	322	324.66	Pulp Mill Rd	794	730	1,524	1	9	51	218	118	22	2,134
101565	SR 277	324.66	Pulp Mill Rd	330	335.7	Red Hill Rd	413	474	887	1	10	57	100	125	25.4	1,135
101566	SR 277	335.7	Red Hill Rd	336	336.45	SR 77 - Snowflake	-	-	5,499	3	8	53	165	165	6	6,819
101567	SR 286	0	International Border	6	12.06	Arivaca-Sasabe Rd.	128	163	291	1	10	52	52	16	23.4	413
101568	SR 286	12.06	Arivaca-Sasabe Rd.	27	42.2	Diamond Bell Ranch Rd.	187	159	346	1	11	59	49	20	19.9	488
101569	SR 286	42.2	Diamond Bell Ranch Rd.	44.03	45.48	SR-86	609	609	1,218	1	10	63	118	55	14.2	1,705
101570	SR 287	111.72	SR 84 / SR 387 - Casa Grande	111.8	112.08	Florence St	-	-	16,443	3	8	51	723	888	9.8	49,329
101572	SR 287	112.08	Florence St	112.5	112.77	Trekell Ave	-	-	22,072	3	10	51	1,236	1,501	12.4	66,216
101574	SR 287	112.77	Trekell Ave	113.2	113.73	Pearl Rd	-	-	25,869	3	10	51	1,397	1,707	12	77,607
101576	SR 287	113.73	Pearl Rd	114	114.23	Arizola Rd	-	-	30,893	3	8	58	1,236	3,244	14.5	92,679
101578	SR 287	114.23	Arizola Rd	115	115.8	I-10 (Exit 194)	-	-	25,982	3	9	51	1,143	2,572	14.3	77,946
101580	SR 287	115.8	I-10 (Exit 194)	117	117.73	Overfield Rd / Central Ave	3,722	3,755	7,477	1	9	58	535	160	9.3	22,431
101581	SR 287	117.73	Overfield Rd / Central Rd	120	122.78	11 Mile Corner Rd	2,910	2,683	5,593	1	11	57	374	115	8.7	11,745
101582	SR 287	122.78	11 Mile Corner Rd	124	125.81	SR 87 - La Palma	-	-	3,038	3	10	62	147	152	9.8	9,114
101583	SR 287	134.75	SR 87 - Coolidge	136	137.55	Attaway Rd	5,571	6,302	11,873	1	8	55	617	468	9.1	18,284
101584	SR 287	137.55	Attaway Rd	140	142.76	SR 79B - Florence	4,144	4,252	8,396	1	8	54	660	453	13.3	15,617
101585	SR 288	258.1	SR 188	285	304.5	MP 304.5	-	-	100	2	15	65	8	4	12	114
101586	SR 288	304.5	MP 304.5	307.3	311.9	MP 311.9 (At Chamberlain Trl)	-	-	777	1	12	51	19	24	5.6	1,088
101587	SR 289	0	I-19 (Exit 12)	1	2.9	MP 3	575	581	1,156	1	12	70	22	4	2.2	1,653
101588	SR 289	2.9	MP 3	105	10.83	Pena Blanca Dam	-	-	201	3	14	54	9	5	7	289
101589	SR 303	103.87	I-10 Exit 124	104	104.19	.07 miles north of McDowell Rd	21,882	21,882	43,764	12	8	57	1,531	1,269	6.4	69,147
101591	SR 303	104.19	.07 miles north of McDowell Rd	104.96	105.16	Thomas Rd	25,000	26,000	51,000	2	8	57	1,663	1,380	6	90,143
101592	SR 303	105.16	Thomas Rd	106	106.18	Indian School Rd	24,212	28,018	52,230	1	9	51	1,828	1,306	6	109,161
101593	SR 303	106.18	Indian School Rd	107.18	107.18	Camelback Rd	27,686	26,969	54,655	1	9	52	1,858	1,421	6	97,559
101594	SR 303	107.18	Camelback Rd	108	108.19	Bethany Home Rd	28,610	27,859	56,469	1	8	52	1,807	1,468	5.8	106,726
101595	SR 303	108.19	Bethany Home Rd	109	109.17	Glendale Ave	28,475	27,593	56,068	1	8	50	1,794	1,402	5.7	80,738
101596	SR 303	109.17	Glendale Ave	110	110.19	Northern Ave	28,201	27,485	55,686	1	8	50	1,726	1,281	5.4	83,807
101597	SR 303	110.19	Northern Ave	111	111.2	Olive Ave	27,649	27,587	55,236	1	8	51	1,602	1,270	5.2	55,236
101598	SR 303	111.2	Olive Ave	112	112.19	Peoria Ave	26,874	27,377	54,251	1	9	51	2,170	2,930	9.4	97,109
101599	SR 303	112.19	Peoria Ave	113	113.19	Cactus Rd	26,095	27,718	53,813	1	9	50	2,153	2,852	9.3	75,607
101600	SR 303	113.19	Cactus Rd	114	114.18	Waddell Rd	23,185	24,455	47,640	1	9	50	2,382	2,620	10.5	81,226
101601	SR 303	114.18	Waddell Rd	115	115.19	Greenway Rd	20,289	21,730	42,019	7	10	50	2,101	2,521	11	56,936
101602	SR 303	115.19	Greenway Rd	116.19	116.19	Bell Rd	27,516	27,754	55,270	1	9	56	2,576	2,913	9.9	79,312
101603	SR 303	116.19	Bell Rd	117	118.93	US 60 (Grand Ave) Connector Rd	16,817	17,121	33,938	1	10	57	2,036	2,478	13.3	75,512
101606	SR 303	118.93	US 60 (Grand Ave) Connector Rd	121	123.7	El Mirage Rd	13,938	13,260	27,198	1	11	67	1,360	2,201	13.1	40,117
101607	SR 303	119.27	US 60 (Grand Ave) Connector Rd	121	123.7	El Mirage Rd	7,462	7,461	14,923	3	10	59	1,800	1,776	24	30,741

Loc ID	Route	BMP	Start	TCS MP	EMP	End	Pos Dir AADT	Neg Dir AADT	AADT 2018	AADT Derivation	K Factor %	D Factor %	AADT Single Trucks	AADT Combo Trucks	T Factor %	2040 Future AADT	
101608	SR 303	123.7	El Mirage Rd	125	125.69	Exit 125 Happy Valley Pkwy / Vistancia Pkwy	17,011	15,626	32,637		1	10	68	2,611	1,632	13	40,796
101610	SR 303	125.69	Exit 125 Happy Valley Pkwy / Vistancia Pkwy	126.27	127.99	Exit 127 Lone Mountain Pkwy	15,222	13,831	29,053		1	12	74	2,324	1,888	14.5	50,407
101611	SR 303	127.99	Exit 127 Lone Mountain Pkwy	128.46	131.79	Exit 131 Lake Pleasant Pkwy	12,580	11,013	32,637		1	9	77	2,788	1,981	14.6	90,404
101612	SR 303	131.79	Exit 131 Lake Pleasant Pkwy	135.85	139.18	I-17 (Exit 221)	13,533	12,407	25,940		1	13	80	2,335	1,946	16.5	35,149
102291	SR 303	131.79	EXIT 131 Lake Pleasant Parkway		139.17	I-17 (Exit 221)	13,547	12,423	25,970		1	12	51	2,337	1,948	16.5	69,859
101614	SR 347	160.89	SR 84	163	165.34	Louis Johnson Dr	2,081	2,227	4,308		1	8	54	281	304	13.6	12,924
101615	SR 347	165.34	Louis Johnson Dr	167	168.51	Papago Rd	2,250	2,437	4,687		1	9	64	281	375	14	14,061
101616	SR 347	168.51	Papago Rd	170	171.5	Farrell Rd / Casino entrance	3,643	3,450	7,093		1	7	52	623	337	13.5	21,279
101617	SR 347	171.5	Farrell Rd / Casino entrance	171.9	171.99	Juan St	6,976	6,753	13,729		1	9	51	474	234	5.2	28,831
102292	SR 347	171.99	Juan St	172.4	172.51	Bowlin Rd	7,122	6,932	14,054		7	9	50	478	211	4.9	33,870
102293	SR 347	172.51	Bowlin Rd	172.6	173.16	Honeycutt Ave	8,337	7,595	15,932		1	7	54	478	271	4.7	32,501
102294	SR 347	173.16	Honeycutt Ave	173.2	173.46	Maricopa-Casa Grande Hwy	12,942	11,934	24,876		1	8	56	746	547	5.2	49,503
101618	SR 347	173.46	Maricopa-Casa Grande Hwy	173.76	174	Edison Rd	14,651	16,223	30,874		1	8	62	679	617	4.2	52,486
101620	SR 347	174	Edison Rd	174.4	174.56	SR 238 / Smith Enke Rd	14,688	16,278	30,966		1	8	62	774	619	4.5	54,500
101621	SR 347	174.56	SR 238 / Smith Enke Rd	175	175.65	Cobblestone Farms Dr	21,043	18,666	39,709		7	8	61	1,985	1,587	9	60,755
101622	SR 347	175.65	Cobblestone Farms Dr	181	185.28	Riggs Rd	21,784	20,387	42,171		1	7	76	2,043	1,794	9.1	56,087
101623	SR 347	185.28	Riggs Rd	186	187.51	Maricopa Rd North	20,409	22,530	42,939		1	8	68	3,435	3,221	15.5	52,815
101624	SR 347	187.51	Maricopa Rd North	188.1	189.38	I-10 (Exit 164) / Ocotillo Rd	20,210	18,232	38,422		1	7	67	3,687	3,354	18.3	74,923
101634	SR 366	113.69	US 191 / Swift Trail	114.5	115.8	Federal Prison Camp Rd	210	426	636		1	11	89	32	9	6.4	1,075
101635	SR 366	115.8	Federal Prison Camp Rd	129	143.2	Columbine Ranger Station	-	-	100		3	17	64	9	4	13	143
101636	SR 373	385.65	SR 260	387	390.2	Apache Co Rte 120 / 121 - Greer	506	459	965		1	13	53	39	19	6	1,119
101637	SR 377	0	SR 277	29.96	33.83	SR 77	-	-	2,837		1	16	62	275	103	13.3	5,390
101638	SR 386	0	SR 86	0.5	12.22	Kitt Peak Observatory	-	-	160		1	17	59	9	5	8.8	231
102319	SR 387	0	SR 84 / SR 287 - Casa Grande	0.31	0.5	McMurray Rd	-	-	14,019		7	8	50	1,173	336	10.8	42,057
101639	SR 387	0.5	McMurray Rd	0.68	1.02	Cottonwood Ln	7,647	7,605	15,252		1	9	51	1,220	534	11.5	45,756
101641	SR 387	1.02	Cottonwood Ln	1.6	2.02	Kortsen Rd	-	-	16,075		7	9	50	1,124	807	12	48,225
101643	SR 387	2.02	Kortsen Rd	2.36	3.03	Rodeo Rd	10,339	10,019	20,358		1	10	51	668	866	7.5	42,752
101645	SR 387	3.03	Rodeo Rd	3.4	6.6	Hopi Dr	10,362	10,422	20,784		1	8	51	1,190	1,029	10.7	62,352
101646	SR 387	6.6	Hopi Dr	7	8.58	I-10 (Exit 185)	10,143	10,192	20,335		1	9	51	632	968	7.9	48,397
101647	SR 387	8.58	I-10 (Exit 185)	8.7	8.81	SR 187	-	-	13,479		7	8	62	674	1,078	13	29,923
101648	SR 387	8.81	SR 187	13.4	15.72	SR 87	1,382	1,579	2,961		1	9	54	319	702	34.5	6,514
101651	SR 389	0	Utah State Line - Colorado City	2	2.52	Central Rd	-	-	4,495		3	10	56	405	315	16	7,057
101652	SR 389	2.52	Central Rd	3.5	4.78	Cane Beds Rd	1,558	1,695	3,253		1	9	61	325	265	18.1	5,107
101653	SR 389	4.78	Cane Beds Rd	12	19.19	Pipe Springs National Monument Rd	-	-	2,410		3	10	57	121	313	18	4,628
101654	SR 389	19.19	Pipe Springs National Monument Rd	23	30.4	BIA 50 / Pratt St	-	-	2,909		1	11	57	117	291	14	4,596
101655	SR 389	30.4	BIA 50 / Pratt St	31	32.22	Altus Ln	1,819	2,021	3,840		1	7	61	474	334	21	4,992
102295	SR 389	32.22	Altus Ln	32.43	32.59	US 89A - Fredonia	-	-	4,382		7	9	59	438	307	17	6,924
101656	SR 473	0	SR 260	5	9.97	Hawley Lake Dam	-	-	361		1	14	55	18	7	7	538
101657	SR 564	374.28	US 160 (Near Marsh Pass)	375	383.46	Navajo National Monument	161	222	383		1	12	55	19	15	9	532
101658	SR 587	218.76	I-10 (Exit 175) / Casa Blanca Rd	224.2	225.31	SR 87 - South of Chandler	5,216	4,761	9,977		1	8	53	864	418	12.8	19,655
101659	SR 989	34.01	Tangerine Rd (West of Rancho Vistos)	35	36	SR 77 (north of Oro Valley)	8,884	9,992	18,876		1	9	70	585	944	8.1	32,089
101661	SR 89A	317.73	MP 317.31 (N of Prescott)	319	318.45	Exit xxx Larry Caldwell Dr	-	-	33,267		3	9	62	1,663	1,164	8.5	33,267
101662	SR 89A	318.45	Exit xxx Larry Caldwell Dr	320.86	322.14	Exit xxx Glassford Hill Rd	16,954	16,711	33,665		1	11	69	1,683	1,178	8.5	51,002
101663	SR 89A	322.14	Exit xxx Glassford Hill Rd	322.7	323.41	Exit 323 Viewpoint Dr	15,902	16,084	31,986		1	10	70	1,279	960	7	42,701
101664	SR 89A	323.41	Exit 323 Viewpoint Dr	324.34	324.47	Robert Rd / SR 895 (A) - Prescott Valley	9,654	9,567	19,221		1	10	63	807	769	8.2	36,039
101665	SR 89A	324.47	Robert Rd / SR 895 (A) - Prescott Valley	330	330.1	Old Fain Rd	-	-	2,335		3	7	60	194	4	8.9	5,067
101666	SR 89A	330.1	Old Fain Rd	337.37	343.83	MP 343.83	-	-	1,412		3	12	54	118	7	8.9	2,146

Loc ID	Route	BMP	Start	TCS MP	EMP	End	Pos Dir AADT	Neg Dir AADT	AADT 2018	AADT Derivation	K Factor %	D Factor %	AADT Single Trucks	AADT Combo Trucks	T Factor %	2040 Future AADT	
101667	SR 89A	343.83	MP 343.83	344.2	344.32	MP 344.32	1,173	1,036	2,209		1	10	52	119	2	6.5	3,358
101668	SR 89A	344.32	MP 344.32	345	345.32	Dundee Ave	-	-	6,695		1	9	51	354	4	6.7	9,800
101669	SR 89A	345.32	Dundee Ave	348	348.4	Turquoise Way	1,733	1,623	3,356		1	9	53	177	5	5.6	4,900
101670	SR 89A	348.4	Turquoise Way	348.75	348.98	Old Hwy 89A	1,883	1,456	3,339		1	9	57	156	7	5	4,875
101671	SR 89A	348.98	Old Hwy 89A	349.3	349.98	Pine Shadows Blvd	4,493	3,849	8,342		1	8	50	292	241	6.4	12,179
101672	SR 89A	349.98	Pine Shadows Blvd	351	351.17	Verde Heights Dr / Black Hills Dr	5,248	5,267	10,515		1	8	51	672	336	9.6	15,352
101673	SR 89A	351.17	Verde Heights Dr / Black Hills Dr	351.5	352.27	6th St	6,100	5,188	11,288		1	9	52	1,140	323	13	15,126
101675	SR 89A	352.54	8th St	353	353.07	Main St / Cottonwood St	9,724	17,350	27,074		1	9	64	2,166	785	10.9	34,655
101676	SR 89A	352.27	6th St	352.47	352.54	8th St	7,429	10,294	17,723		1	8	60	1,962	594	14.4	24,103
101678	SR 89A	353.07	Main St / Cottonwood St	355	355.2	SR 260 - Cottonwood	9,143	12,013	21,156		1	8	60	1,231	536	8.4	63,468
101681	SR 89A	355.2	SR 260 - Cottonwood	355.3	356.11	Zelesky Rd	9,240	11,920	21,160		7	9	51	740	612	6.4	28,989
101683	SR 89A	356.11	Zelesky Rd	357	357.13	Cornville Rd	-	-	17,420		3	7	51	1,349	332	9.6	23,953
101684	SR 89A	357.13	Cornville Rd	357.6	362.57	Page Springs Rd	-	-	14,965		3	6	64	1,096	272	9.1	20,502
101685	SR 89A	362.57	Page Springs Rd	367.5	369.64	Upper Red Rock Loop Rd	6,970	6,662	13,632		7	9	61	1,323	492	13.3	26,173
101686	SR 89A	369.64	Upper Red Rock Loop Rd	370	370.98	Dry Creek Rd	-	-	20,007		3	10	63	700	580	6.4	38,213
101687	SR 89A	370.98	Dry Creek Rd	371.06	371.62	Andante Dr	10,915	10,914	21,829		1	8	56	873	632	6.9	35,581
101689	SR 89A	371.62	Andante Dr	371.78	372.18	Coffee Pot Rd / Sunset Dr	12,441	12,935	25,376		1	8	51	1,289	750	8	41,363
101690	SR 89A	372.18	Coffee Pot Rd / Sunset Dr	372.36	372.46	Mountain Shadows Dr	-	-	31,057		3	9	51	1,242	901	6.9	50,623
101691	SR 89A	372.46	Mountain Shadows Dr	372.59	373.07	Airport Rd	11,439	11,735	23,174		1	10	54	812	673	6.4	37,774
101693	SR 89A	373.07	Airport Rd	373.5	373.55	Rolling Hills Rd	13,252	12,543	25,795		1	9	52	679	104	3	42,046
101695	SR 89A	373.55	Rolling Hills Rd	373.8	374.17	SR 179 South - Sedona	-	-	19,124		3	10	55	382	191	3	26,391
101697	SR 89A	374.17	SR 179 - Sedona	374.19	374.2	MP 374.20	-	-	18,531		3	9	51	371	185	3	32,429
101699	SR 89A	374.84	MP 374.84	375	375.24	Purtymun Ln	3,735	3,425	7,160		1	10	58	250	43	4.1	12,530
101700	SR 89A	375.24	Purtymun Ln	380.9	397.2	Forest Highlands Dr	-	-	3,730		3	18	58	141	27	4.5	11,190
101701	SR 89A	397.2	Forest Highlands Dr	398	399.1	I-17 (Exit 337) / Shateral Blvd	3,720	3,467	7,187		1	9	57	156	34	2.6	9,056
101702	SR 89A	401.95	I-17 - Flagstaff (MP 340.34)	402.1	402.16	Forest Meadow St	16,298	17,759	34,057		3	10	61	2,230	1,231	10.2	50,745
101704	SR 89A	402.16	Forest Meadow St	402.37	402.52	University Ave	9,776	15,169	24,945		1	8	66	701	505	4.8	39,912
101706	SR 89A	402.52	University Ave	403	403.18	SB 40 (4) / Old Rte 66	19,533	22,026	41,559		3	7	50	1,247	623	4.5	74,391
101715	SR 180A	343.1	US 180	348	354.27	SR 61 - Concho	92	100	192		1	13	50	23	11	17.7	545
101716	SR 88 (1)	0	California State Line - Yuma	0.08	0.29	1st St	-	-	23,262		3	10	52	721	256	4.2	34,660
101717	SR 88 (1)	0.54	Giss Parkway / 3rd St	1	1.12	8th St	-	-	23,262		3	9	57	709	349	4.5	41,406
101719	SR 88 (1)	1.12	8th St	2	2.12	US 95 / 16th St	-	-	22,866		3	9	54	877	457	5.8	32,698
101721	SR 88 (1)	2.12	US 95 / 16th St	3	3.12	24th St	-	-	28,319		3	9	54	1,076	425	5.3	37,664
101723	SR 88 (1)	3.12	24th St	4	4.25	Catalina Dr (32nd St)	-	-	32,132		3	9	57	996	321	4.1	36,952
101724	SR 88 (1)	4.25	Catalina Dr (32nd St)	5	5.51	Avenue 2E / Pacific Avenue	-	-	43,984		3	9	54	1,364	660	4.6	57,179
101725	SR 88 (1)	5.51	Avenue 2E / Pacific Avenue	6	6.58	Avenue 3E / SR 280 (Retired)	-	-	33,559		3	9	57	1,041	738	5.3	40,942
101726	SR 88 (1)	6.58	Avenue 3E / SR 280 (Retired)	6.9	10.48	Araby Rd	-	-	25,667		3	9	57	603	642	4.8	49,794
101727	SR 88 (1)	10.48	SR 195 (Araby Rd)	11.4	12.38	Near I-8 (Exit 9) - E of Yuma	8,841	9,287	18,128		12	9	57	715	438	6.4	24,110
101729	SR 88 (3)	117.79	I-8 (Exit 115) - West of Gila Bend	118.08	118.37	SR 85 South	4,772	4,959	9,731		1	6	52	729	2,161	29.7	9,731
101730	SR 88 (3)	118.37	SR 85 South	120	120.34	SR 85 North	7,967	7,418	15,386		1	7	55	1,101	2,080	20.7	22,310
101733	SR 88 (3)	120.34	SR 85 North	121.39	122.83	I-8 (Exit 119) - East of Gila Bend	2,337	2,069	4,406		7	8	52	529	1,939	56	4,406
101739	SR 10B (1)	17.45	I-10 (Exit 17) - West end of Quartzsite	18.8	18.96	SR 95	3,903	3,750	7,653		3	11	51	459	459	12	9,490
101741	SR 10B (1)	18.96	SR 95	20	20.42	I-10 (Exit 19) - East end of Quartzsite	2,933	2,970	5,903		1	7	51	295	413	12	9,091
101743	SR 10B (3)	303.47	I-10 (Exit 303) - West end of Benson	304	304.8	SR 105 (retired) / Ocotillo Rd	4,348	4,384	8,732		1	8	53	847	394	14.2	12,749
101745	SR 10B (3)	304.8	SR 105 (retired) / Ocotillo Rd	305.3	305.36	Patagonia St	7,304	6,632	13,936		1	9	51	1,384	342	12.4	21,880
101746	SR 10B (3)	305.36	Patagonia St	305.6	305.79	SR 80 South	-	-	14,015		3	9	56	1,359	630	14.2	22,424
101747	SR 10B (3)	305.79	SR 80 South	306.4	306.92	I-10 (Exit 306)	2,251	1,949	4,200		1	8	64	418	95	12.2	6,888

Loc ID	Route	BMP	Start	TCS MP	EMP	End	Pos Dir AADT	Neg Dir AADT	AADT 2018	AADT Derivation	K Factor %	D Factor %	AADT Single Trucks	AADT Combo Trucks	T Factor %	2040 Future AADT	
101748	SR 10B (4)	336.49	I-10 (Exit 336) - West end of Willcox	338	339.54	Arizona Ave	842	714	1,556		1	10	52	196	91	18.4	2,163
101749	SR 10B (4)	339.54	Arizona Ave	340	340.04	SR 186 South	1,385	1,240	2,625		1	10	52	255	131	14.7	3,465
101750	SR 10B (4)	340.04	SR 186 South	340.66	340.75	SR 186 North	-	-	1,677		3	11	51	163	76	14.3	2,130
101751	SR 10B (4)	340.75	SR 186 North	342.6	344.45	I-10 (Exit 344) - East end of Willcox	848	775	1,623		1	11	59	157	74	14.2	1,948
101752	SR 10B (5)	362.68	I-10 (Exit 362) - West end of Bowie	363.9	364.53	Apache Pass Rd	304	289	593		1	10	52	56	39	16	771
101753	SR 10B (5)	364.53	Apache Pass Rd	364.8	366.64	I-10 (Exit 366) - East end of Bowie	217	153	370		1	12	56	28	22	13.5	481
101754	SR 10B (6)	378.92	I-10 (Exit 378) - West end of San Simon	379.95	380.33	Cochise Ave	348	333	681		1	10	54	118	65	26.9	967
101755	SR 10B (6)	380.33	Cochise Ave	381	382.44	I-10 (Exit 382) - East end of San Simon	161	190	351		1	11	73	25	53	22.2	488
101756	SR 19B (1)	0	International Border and POE - Nogales	0.3	0.73	Arroyo Blvd			8,006		7	8	50	803	234	13	12,329
101757	SR 19B (1)	0.73	Arroyo Blvd	0.9	1.66	SR 82	8,729	7,372	16,101		1	8	54	1,446	513	12.2	24,474
101759	SR 19B (1)	1.66	SR 82	2.1	2.78	SR 189 (Mariposa Rd)	7,681	7,826	15,507		3	10	51	620	930	10	20,934
101761	SR 19B (1)	2.78	SR 189 (Mariposa Rd)	3.5	3.84	Frank Reed Rd	9,014	8,797	17,811		1	10	51	552	2,137	15.1	21,373
101763	SR 19B (1)	3.84	Frank Reed Rd	4.01	4.58	Old Tucson Rd	9,959	10,149	20,108		1	10	52	357	268	3.1	27,447
101764	SR 19B (1)	4.58	Old Tucson Rd	5	5.88	Frank Reed Rd	7,020	6,480	13,500		2	8	57	496	358	6.3	16,268
101768	SR 40B (1)	138.81	I-40 (Exit 121) - West end of Seligman	139	139.94	Old US 66	-	-	1,600		3	11	66	64	91	9.7	1,840
101769	SR 40B (1)	139.94	Old US 66	140	140.55	Main St - Seligman	1,520	1,217	2,737		7	11	59	115	109	8.2	3,585
101771	SR 40B (1)	140.55	Main St - Seligman	142	143.04	I-40 (Exit 123) - East end of Seligman	1,045	991	2,036		1	10	50	90	61	7.4	2,993
101772	SR 40B (2)	144.82	I-40 (Exit 145) - West end of Ash Fork	145	145.28	MP 145.28	460	502	962		1	8	54	192	42	24.3	1,568
101773	SR 40B (2)	145.28	MP 145.28	145.6	146.22	MP 146.22	1,382	1,470	2,852		1	10	53	342	114	16	4,249
101774	SR 40B (2)	146.22	MP 146.22	146.3	146.44	I-40 (Exit 146) - East end of Ash Fork	1,198	1,276	1,237		7	8	53	198	89	11.6	1,855
101775	SR 40B (4)	191.44	I-40 (Exit 191) - West end of Flagstaff	191.8	191.84	MP 191.84	1,971	1,951	3,922		1	10	50	794	77	22.2	3,922
101776	SR 40B (4)	193.17	MP 193.17	193.5	193.59	Woody Mountain Rd	-	-	6,652		3	8	51	333	70	6.1	11,841
101777	SR 40B (4)	193.59	Woody Mountain Rd	194.27	194.84	Woodlands Village Blvd	8,208	6,174	14,382		1	9	52	1,151	216	9.5	16,683
101778	SR 40B (4)	194.84	Woodlands Village Blvd	195.19	195.49	SR 89A South / Milton Rd	10,914	10,910	21,824		12	9	50	2,443	300	12.6	33,609
101779	SR 40B (4)	195.49	SR 89A South / Milton Rd	195.7	196.14	US 180 North /Humphrey	17,212	16,123	33,335		1	8	56	2,174	1,685	11.6	71,670
101781	SR 40B (4)	196.14	US 180 North /Humphrey	196.6	197.16	Switzer Canyon Dr	11,632	10,413	22,045		1	8	55	894	526	6.4	22,486
101783	SR 40B (4)	197.16	Switzer Canyon Dr	198	198.72	4th St	10,327	10,638	20,965		1	9	53	1,172	385	7.4	31,657
101785	SR 40B (4)	198.72	4th St	199.6	200.49	US 89 North	13,900	14,100	28,000		2	9	53	759	629	5	40,320
101787	SR 40B (4)	200.49	US 89 North	200.9	200.99	I-40 (Exit 201) - East end of Flagstaff	16,656	14,911	31,567		1	9	59	1,105	917	6.4	44,825
101790	SR 40B (7)	274.48	I-40 (Exit 274) - West end of Joseph City	275	275.87	Westover Ave	501	335	836		1	9	81	52	5	6.8	1,204
101791	SR 40B (7)	275.87	Westover Ave	276	277.35	I-10 (Exit 277) - East end of Joseph City	1,305	1,157	2,462		1	9	55	108	22	5.3	3,595
101792	SR 40B (8)	285	I-40 (Exit 285) - West end of Holbrook	286	286.69	SR 77 / US 180 / Navajo Blvd - Holbrook	2,177	2,161	4,338		1	9	55	322	183	11.6	6,464
101794	SR 40B (8)	286.69	SR 77 / US 180 / Navajo Blvd - Holbrook	287	287.04	Florida St	7,237	7,840	15,077		3	7	52	678	754	9.5	27,289
101796	SR 40B (8)	287.04	Florida St	287.1	287.41	I-10 (Exit 286) - Holbrook	6,269	6,797	13,066		1	8	51	653	523	9	19,207
101798	SR 40B (8)	287.41	I-40 (Exit 286) - Holbrook	288	288.37	Hermosa Dr	5,855	6,342	12,197		3	7	53	671	488	9.5	20,613
101800	SR 40B (8)	288.37	Hermosa Dr	289	289.9	I-40 (Exit 289) - Holbrook	3,042	3,030	6,072		3	7	52	364	395	12.5	10,262
101803	SR 79B	132.18	SR 79 - Florence	132.5	132.75	SR 287	865	975	1,840		1	8	59	267	127	21.4	5,520
101804	SR 79B	132.75	SR 287	133.1	133.56	Butte St	4,434	4,015	8,449		7	10	53	591	169	9	25,347
101805	SR 79B	133.56	Butte St	133.8	134.02	SR 79 - Florence	6,108	6,287	12,395		1	10	54	453	223	5.5	37,185
101806	SR 40S	0.21	SB 40 (6) - Winslow	1	1.41	Navajo / Coconino County Line	420	535	955		1	11	59	143	4	15.4	1,433
101807	SS 89A	324.47	Robert Rd / SR 89A	326	327.7	Lakeshore Dr	6,095	6,066	12,121		1	10	51	424	351	6.4	18,182
100194	SR 90S	317.18	SR 90	317.31	317.8	W Kayetan Drive	6,761	6,865	13,626		1	8	59	946	556	11	18,531
100195	SR 90S	317.18	SR 90	317.29	317.48	East Gate Ft Huachuca	5,163	5,275	10,438		1	9	50	323	750	10.3	13,361
101808	SR 95S (1)	143.93	SR 95 - Parker	144.1	144.83	California State Line	4,220	3,745	7,965		1	7	51	398	159	7	10,434
102289	SS 89A	327.7	Lakeshore Dr	328.5	331	SR 69	4,269	4,301	8,570		1	9	53	643	643	15	17,740
101810	SR 95S (2)	158.75	SR 95	159	159.61	Parker Dam	-	-	1,083		3	15	65	65	32	9	1,386
101812	SR 202S	5	SR 153 / Sky Harbor Blvd	5.8	6.62	Exit 6 SL 202 / Priest Dr	23,243	22,867	46,110		7	8	75	1,430	3,711	11.1	57,407

Loc ID	Route	BMP	Start	TCS MP	EMP	End	Pos Dir AADT	Neg Dir AADT	AADT 2018	AADT Derivation	K Factor %	D Factor %	AADT Single Trucks	AADT Combo Trucks	T Factor %	2040 Future AADT
101814	SR 266S	123.14	SR 266 - Bonita	124	126.17	Fort Grant	115	115	230	12	13	56	34	8	18.3	518
101815	SR 277S	321.18	SR 277	322	322.4	Paper Mill entrance	264	201	465	7	14	57	51	47	21	650